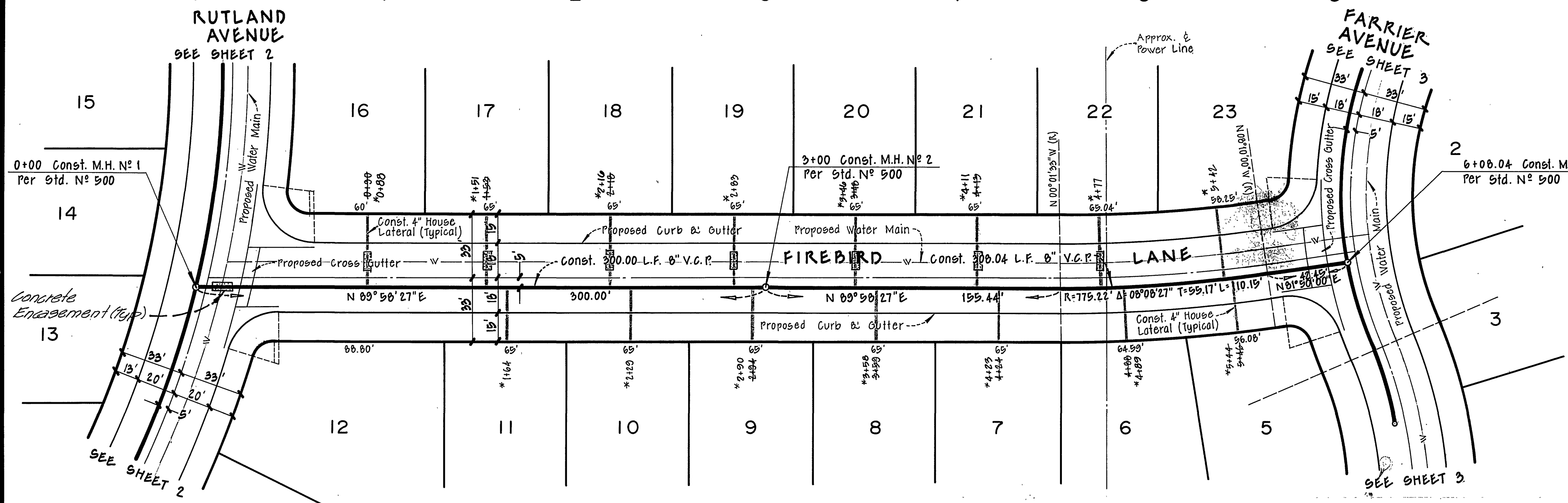
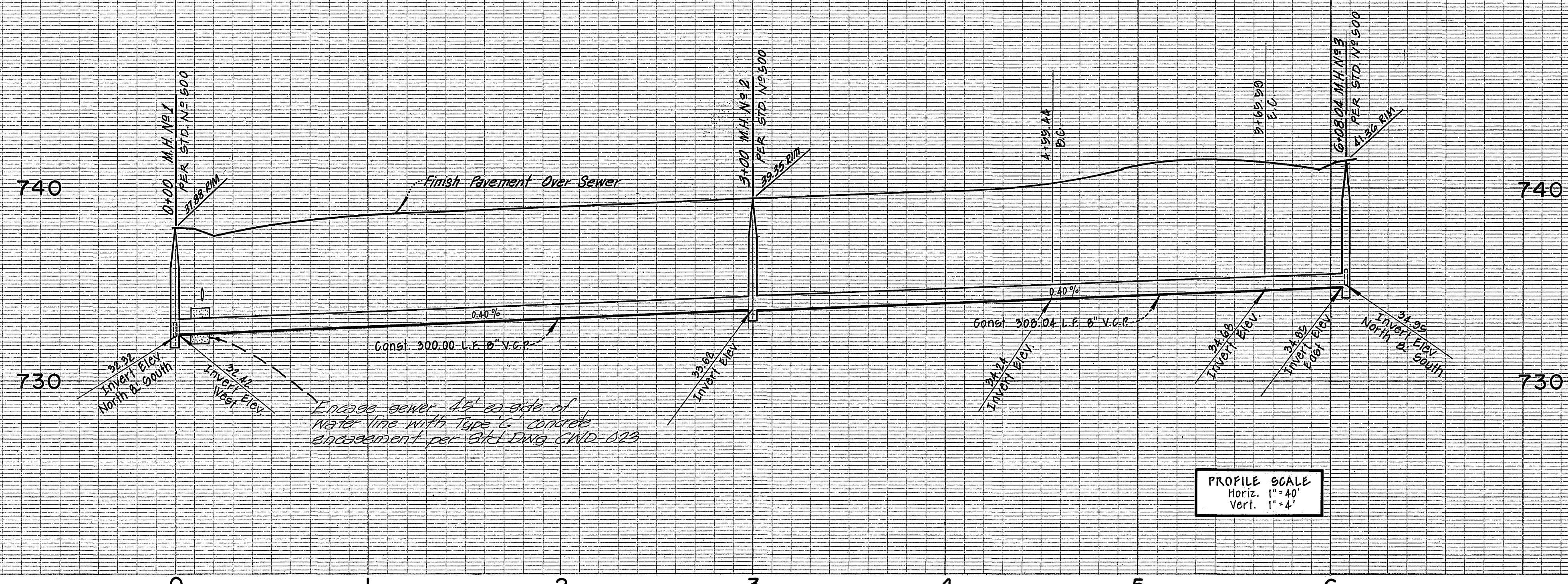


**BENCH MARK**  
 P.K. Nail in center of Northeast curb  
 return at Arlington and Crest.  
 ELEV. = 799.23 Per P.D. 104/41



NOTE: For lots 16 thru 22 contractor shall encase sewer laterals 4.5' ea. side of water line with Type 'C' concrete encasement per Ctd. Dwg. CWD-023, or install cast iron lateral 4.5' ea. side of water line.

**GENERAL NOTES**

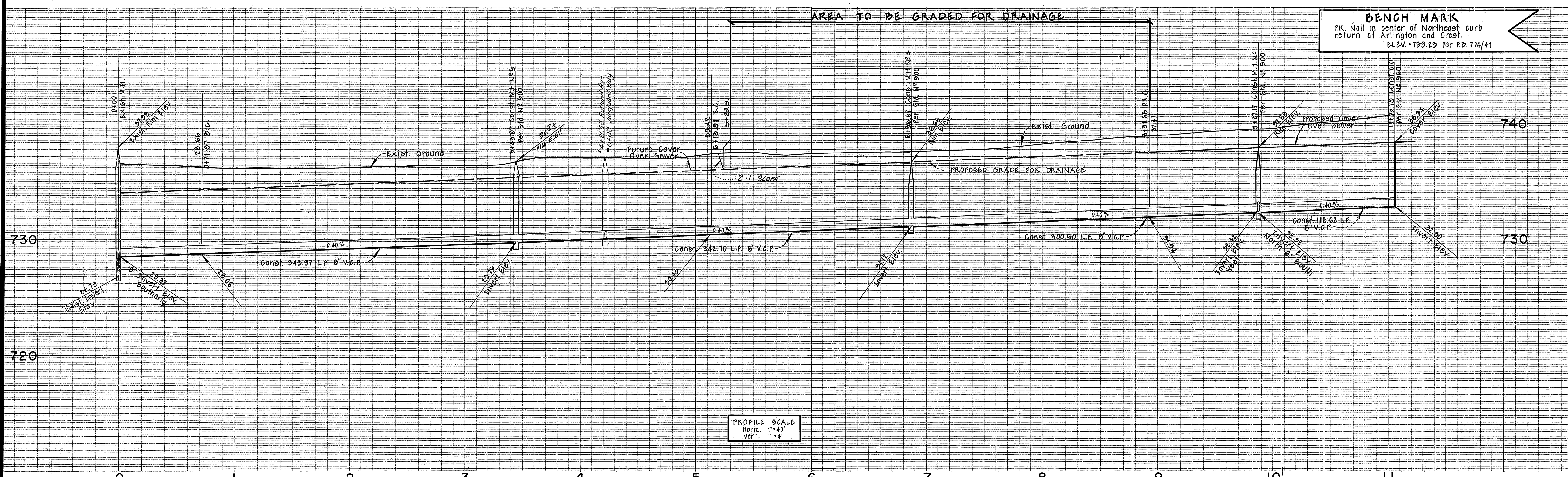
1. Construction shall be in accordance with Standard Specifications for Public Works Construction 1973 Edition & the City of Riverside Standard Drawings.
2. It shall be the responsibility of the contractor to clear the right-of-way in accordance with the provisions of law as it affects each utility, including irrigation lines appurtenances; and at no cost to the city.
3. Laterals to be 4" and extended to property line.
4. Prior to construction of sewer, the contractor is to expose existing sewer and contact the Engineer for verification of existing elevations.
5. The sewer contractor shall adjust manholes to final grade after paving is completed.
6. A plug shall be installed and will remain in place where the new sewer connects with the existing City sewer until such time that the new sewer is accepted by the City.

**NOTICE TO CONTRACTOR**

The existence and location of any underground utility pipes or substructures shown on these plans are obtained by a search of the available records. To the best of our knowledge there are no existing utilities except as shown on these plans. The contractor is required to take due precautionary measures to protect the utility lines shown and any other lines not of record.

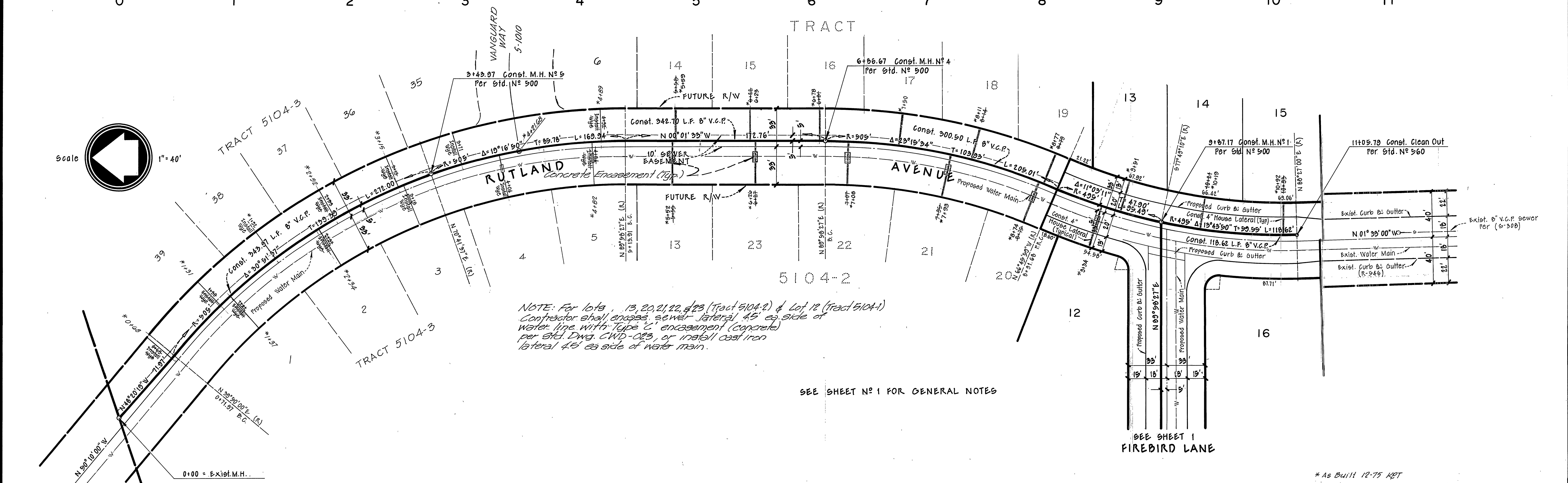
Contractor agrees that he shall assume sole and complete responsibility for job site conditions during the course of construction of this Project, including safety of all persons and property; that this requirement shall apply continuously and not be limited to normal working hours; and that the Contractor shall defend, indemnify and hold the Owner and the Engineer harmless from any and all liability, real or alleged, in connection with the performance of work on this Project, excepting for liability arising from the sole negligence of the Owner or the Engineer.

APPROVED BY <i>Philip E. Brown</i> 2-21-75 CHIEF WATER UTILITY ENGINEER	<b>MAXWELL, BROWN &amp; MULLINS</b> planning engineering surveying SAN BERNARDINO, CALIFORNIA PHILIP E. BROWN C.E. 18679	CITY OF RIVERSIDE, CALIFORNIA DEPARTMENT OF PUBLIC WORKS APPROVED BY: <i>W. J. ...</i> OFFICE ENGINEER PARK DEPARTMENT TRAFFIC DIVISION ASSISTANT CITY ENG.	SEWER PLANS <b>TRACT 5104-1</b> <b>FIREBIRD LANE</b>	PROJECT NO. <b>S-997</b>
				SHEET <b>1</b> OF <b>3</b> FILE NO.
DESIGNED BY: <i>...</i> DRAWN BY: <i>...</i> CHECKED BY: <i>...</i>		DATE: <b>6-7-75</b>	DATE: <b>4-7-75</b>	HORIZ. SCALE: 1" = 40' VERT. SCALE: 1" = 4'



**BENCH MARK**  
 P.K. Nail in center of Northeast curb  
 return of Arlington and Crest.  
 ELEV. = 799.23 Per P.D. 704/41

PROFILE SCALE  
 Horiz. 1" = 40'  
 Vert. 1" = 4'



NOTE: For lots 13, 20, 21, 22, & 23 (Tract 5104-2) & Lot 12 (Tract 5104-1)  
 Contractor shall encase sewer lateral 4.5' ea side of  
 water line with Type C encasement (concrete)  
 per STD Dwg. CWD-023, or install cast iron  
 lateral 4.5' ea side of water main.

SEE SHEET NO 1 FOR GENERAL NOTES

SEE SHEET 1  
 FIREBIRD LANE

\* As Built 12-75 KBT

APPROVED BY  
*Walter Hill* 3-24-75  
 CHIEF WATER UTILITY ENGINEER

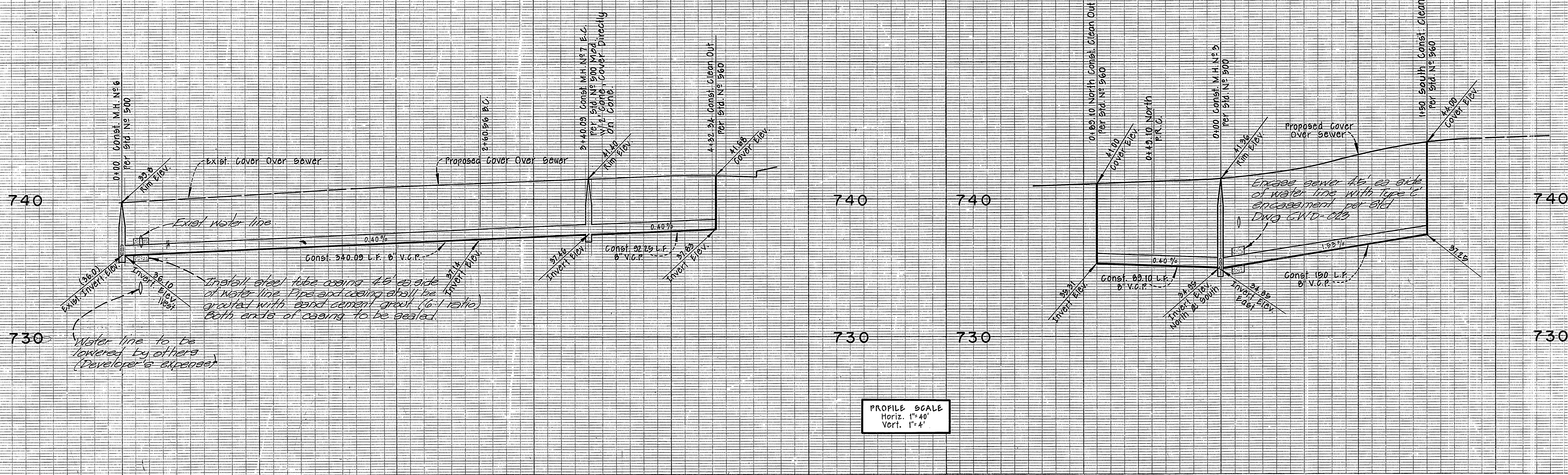
**MAXWELL, BROWN & MULLINS**  
 planning engineering surveying  
 SAN BERNARDINO, CALIFORNIA  
 PHILIP E. BROWN C.E. 18679

MARK	REVISIONS	APPR. DATE

CITY OF RIVERSIDE, CALIFORNIA  
 DEPARTMENT OF PUBLIC WORKS  
 APPROVED BY  
*[Signature]*  
 DIRECTOR OF PUBLIC WORKS  
 DATE 4-1-75

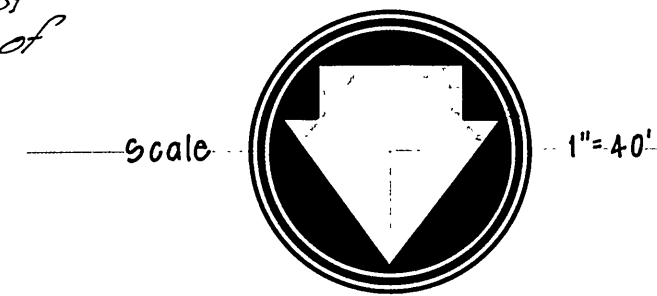
SEWER PLANS		PROJECT NO.
<b>TRACT 5104-1</b>		5-997
<b>RUTLAND AVENUE</b>		SHEET 2 OF 3
HORIZ. SCALE: 1" = 40'	VERT. SCALE: 1" = 4'	FILE NO.

**BENCH MARK**  
 P.K. Nail in center of Northeast curb  
 return at Arlington and Crest  
 ELEV. = 759.25 Per P.D. 704/41

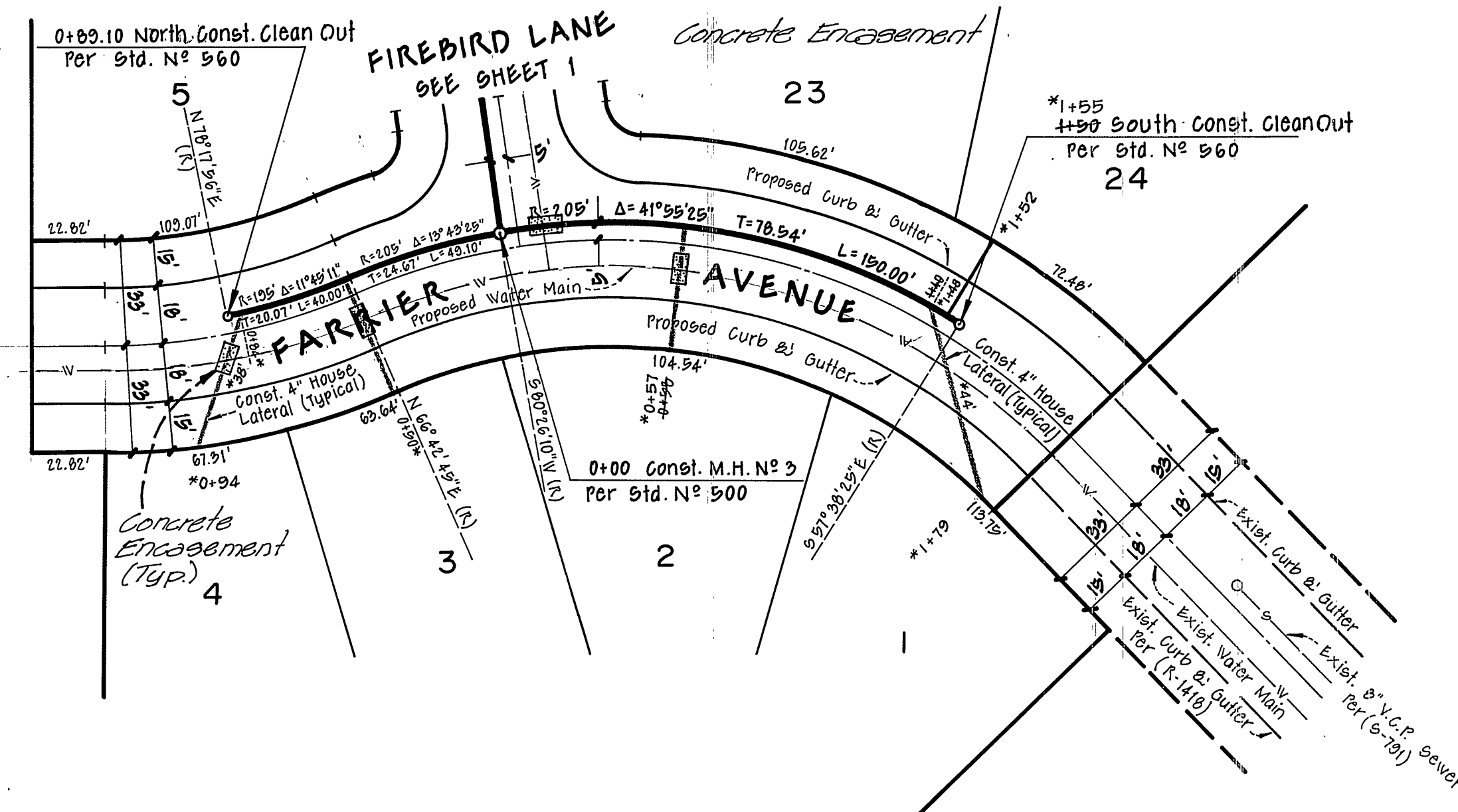
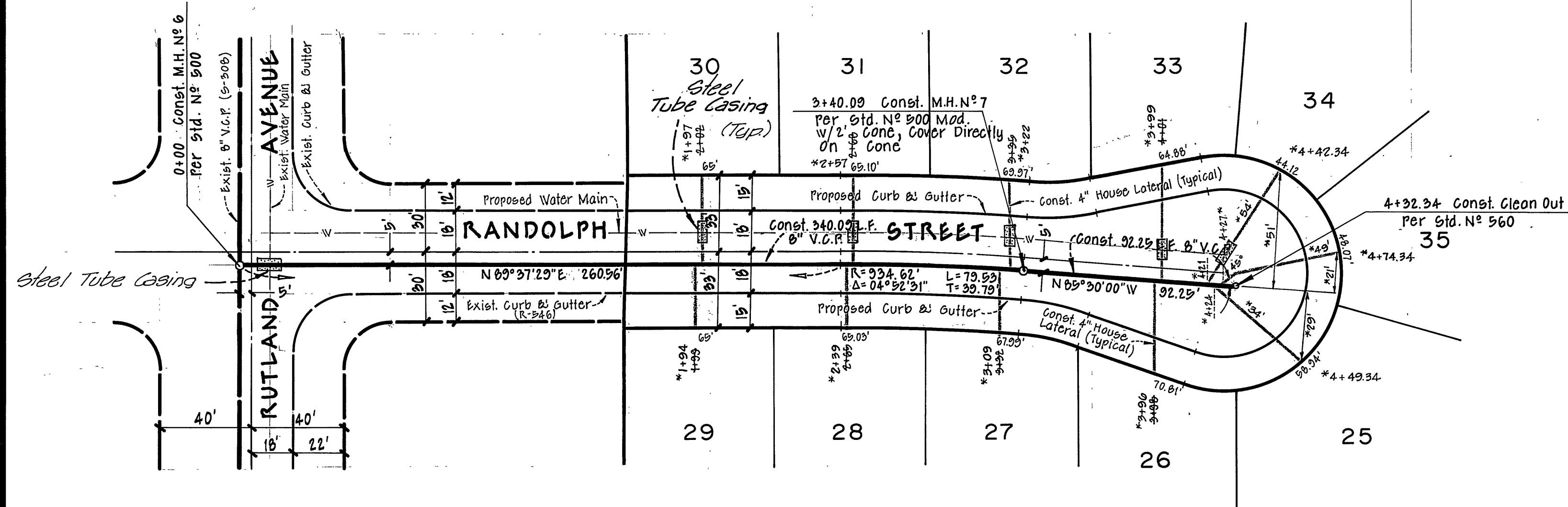
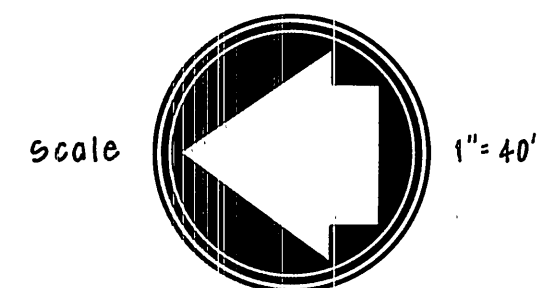


PROFILE SCALE  
 Horiz. 1" = 40'  
 Vert. 1" = 4'

NOTE: For lots 30 thru 34 Contractor shall install steel tube casing on sewer laterals 4.5' ea side of water line or install cast iron lateral 4.5' ea side of water line.



NOTE: For lots 23 & 4 encase sewer lateral 4.5' ea side of water line with Type C concrete encasement per old Dwg. CWD-023 or install cast iron lateral 4.5' ea side of water line.



SEE SHEET NO 1 FOR GENERAL NOTES

APPROVED BY  
*Philip E. Brown*  
 CHIEF WATER UTILITY ENGINEER

**MAXWELL, BROWN & MULLINS**  
 planning engineering surveying  
 SAN BERNARDINO, CALIFORNIA  
 PHILIP E. BROWN C.E. 18679

MARK	REVISIONS	APPR.	DATE

CITY OF RIVERSIDE, CALIFORNIA  
 DEPARTMENT OF PUBLIC WORKS  
 APPROVED BY: *W. J. ...*  
 OFFICE ENGINEER  
 PARK DEPARTMENT  
 TRAFFIC DIVISION  
 ASSISTANT CITY ENGINEER

AS BUILT 8-76 MPT  
 SEWER PLANS  
**TRACT 5104-1**  
**RANDOLPH STREET**  
**FARRIER AVENUE**  
 HORIZ. SCALE: 1" = 40'  
 VERT. SCALE: 1" = 4'

PROJECT NO.  
**S-997**  
 SHEET **3** OF **3**  
 FILE NO.