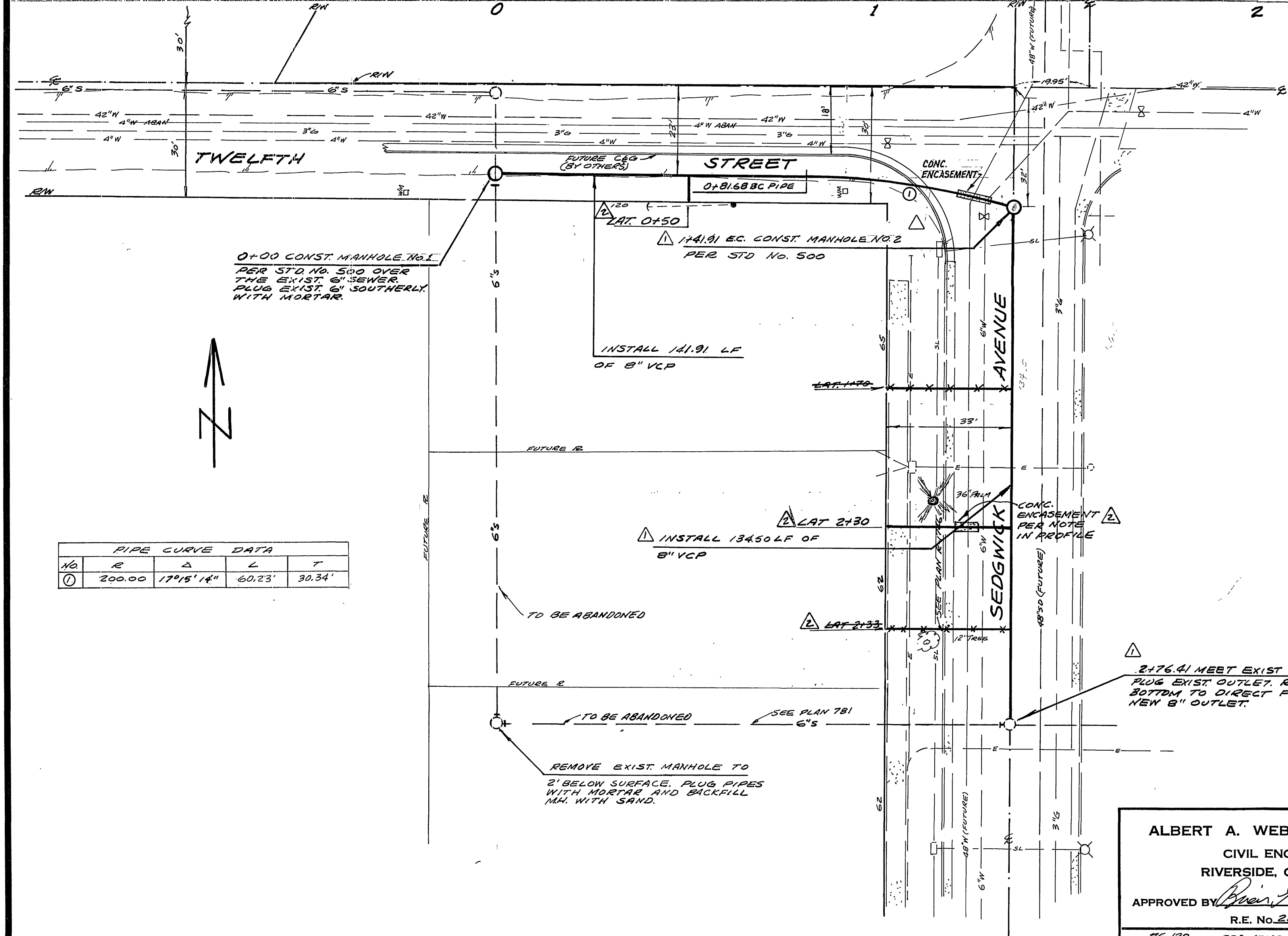


BENCH MARK: BRASS IN CONC. IN 2" IP
 CAPED AT THE INTERSECTION OF HIGH ST.
 AND BROADWAY. RISE 212.88 TO 750/40
 ELEVATION 909.655



PIPE CURVE DATA				
NO.	R	Δ	L	T
1	200.00	17°15'14"	60.23'	30.34'

- GENERAL NOTES**
- CONSTRUCTION SHALL BE IN ACCORDANCE WITH THE STANDARD SPECIFICATIONS FOR PUBLIC WORKS CONSTRUCTION, 1973 EDITION, AND CITY OF RIVERSIDE STANDARD DRAWINGS.
 - IT SHALL BE THE RESPONSIBILITY OF THE CONTRACTOR TO CLEAR THE RIGHT OF WAY IN ACCORDANCE WITH THE PROVISIONS OF LAW AS IT AFFECTS SUCH UTILITY INCLUDING IRRIGATION LINES AND APPURTENANCES AND AT NO COST TO THE CITY.
 - A PLUG SHALL BE INSTALLED AND WILL REMAIN IN PLACE WHERE THE NEW SEWER CONNECTS TO THE EXISTING SEWER UNTIL SUCH TIME THAT THE NEW SEWER IS ACCEPTED BY THE CITY. THE EXISTING SEWER WHICH IS TO BE ABANDONED WILL BE LEFT IN SERVICE UNTIL THE NEW LINE IS ACCEPTED.
 - MANHOLE FRAMES AND COVERS TO BE SET TO MEET EXIST PAVING GRADE.
 - LATERALS TO BE 4" VCP AND EXTENDED TO THE R.L.
 - CONTRACTOR IS TO VERIFY EXISTING SEWER ELEVATIONS PRIOR TO CONSTRUCTION.
 - CONTRACTOR TO VERIFY THE LOCATION AND DEPTH OF THE 6" WATER LINE AT STATION 1+351 BEFORE BEGINNING WORK.

ALBERT A. WEBB ASSOCIATES CIVIL ENGINEERS RIVERSIDE, CALIFORNIA APPROVED BY: <i>[Signature]</i> DATE: 7-30-75 R.E. No. 21894 W.O. 75-128 FOR REDEVELOPMENT AGENCY F.B.	GENERAL REVISIONS TO MOVE SEWER TO SEDGWICK TO AVOID ELECTRIC LINES. SEE 6-15-75. <i>[Signature]</i> 6/15/75	PUBLIC UTILITY DEPT.-WATER DIV. APPROVED BY: <i>[Signature]</i> 5-20-75 CHIEF WATER ENGINEER DATE	REDEVELOPMENT AGENCY APPROVED BY: <i>[Signature]</i> 5-7-75 EXECUTIVE DIRECTOR DATE	ACCOUNT NO. DRAWING NUMBER 5-999
	RELOCATED LATERALS TO BEHIND CLARK 48" FUTURE WATER R.I.S. 7/14/75 <i>[Signature]</i>	CITY OF RIVERSIDE, CALIFORNIA PUBLIC WORKS DEPARTMENT APPROVED BY: <i>[Signature]</i> 5-20-75 PRINCIPAL ENGINEER PARK DEPARTMENT TRAFFIC DIVISION CHIEF PUB. WKS. ENGR. DATE: 6-3-75		SEWER PLAN AND PROFILE SEWER RELOCATION IN TWELFTH ST. & SEDGWICK AVE. SCALE: HORIZ. 1"=20' VERT 1"=4' SHEET 1 OF 1 75-128-B