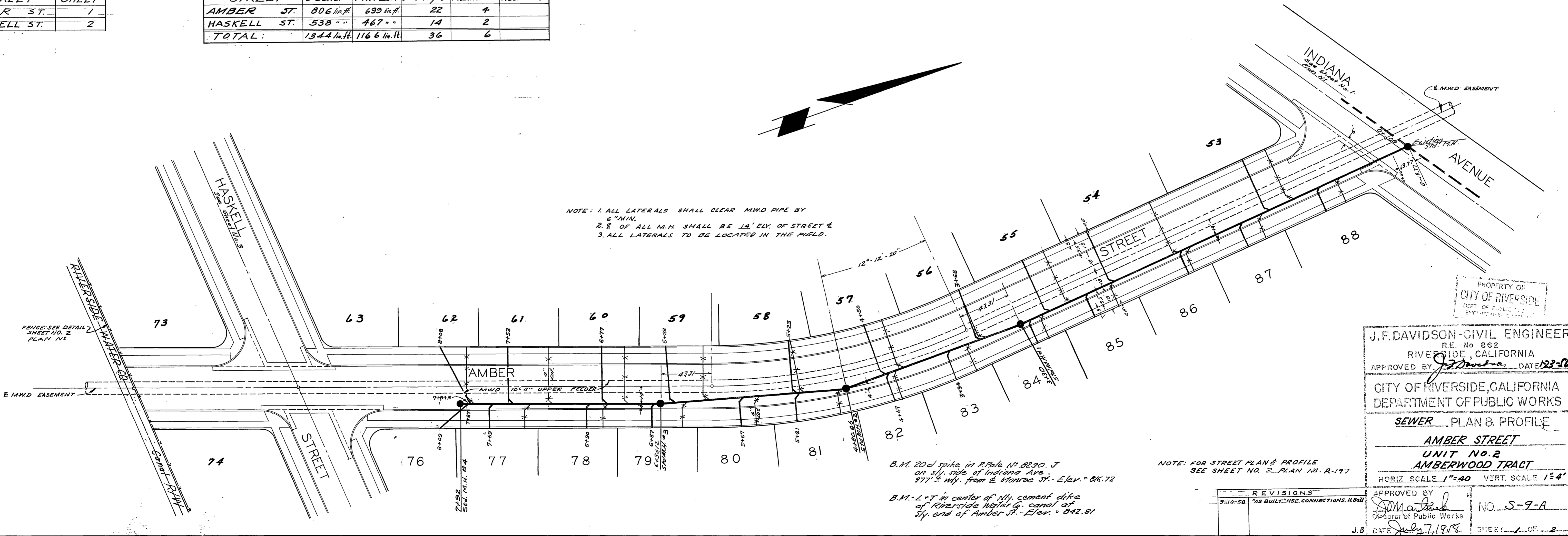


SHEET INDEX	
STREET	SHEET
AMBER ST.	1
HASKELL ST.	2

ESTIMATE OF QUANTITIES				
STREET	8" Sewer	4" to 6" Lat.	8" x 4" Wyes	Manholes Cleanouts
AMBER ST.	806 lin. ft.	699 lin. ft.	22	4
HASKELL ST.	538 "	467 "	14	2
TOTAL:	1344 lin. ft.	1166 lin. ft.	36	6

NOTE: 1. ALL LATERALS SHALL CLEAR MWD PIPE BY 6" MIN.
 2. 2' OF ALL M.H. SHALL BE 12' ELY. OF STREET &
 3. ALL LATERALS TO BE LOCATED IN THE FIELD.



PROPERTY OF
 CITY OF RIVERSIDE
 DEPT. OF PUBLIC WORKS

J.F. DAVIDSON - CIVIL ENGINEER
 R.E. No. 862
 RIVERSIDE, CALIFORNIA
 APPROVED BY: *[Signature]* DATE: 12-26-56

CITY OF RIVERSIDE, CALIFORNIA
 DEPARTMENT OF PUBLIC WORKS

SEWER PLAN & PROFILE
 AMBER STREET
 UNIT NO. 2
 AMBERWOOD TRACT

HORIZ. SCALE 1"=40' VERT. SCALE 1"=4'

REVISIONS
 9-10-58 AS BUILT IN SE. CONNECTIONS. N.B.W.

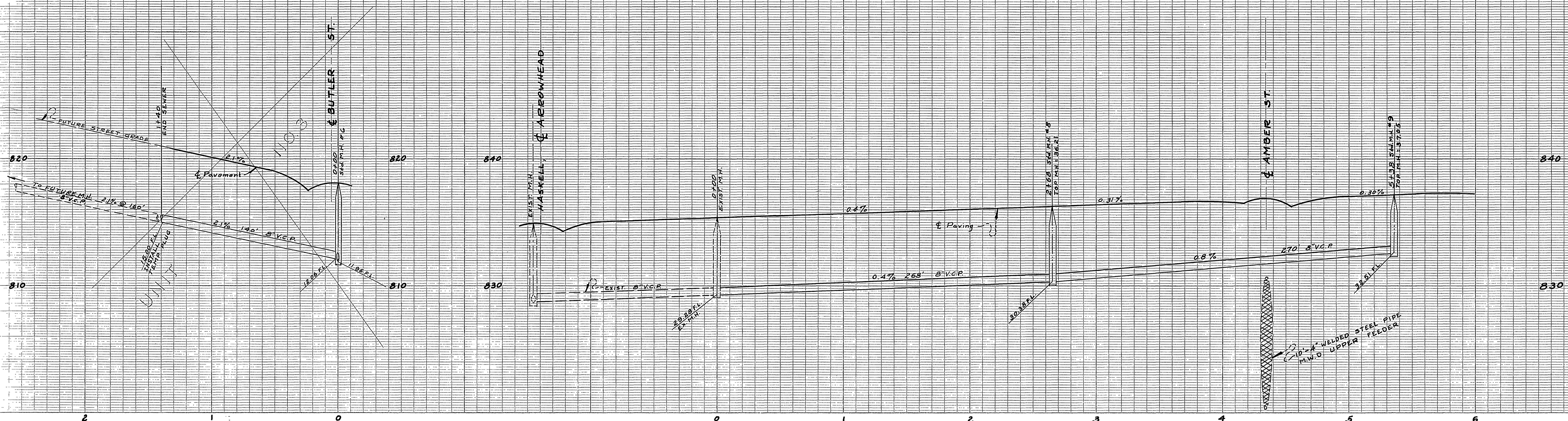
APPROVED BY: *[Signature]*
 Director of Public Works

J.B. DATE: July 7, 1958 SHEET 1 OF 2

B.M. 20' spike in R.P. Pole No. 8290 J on sly. side of Indiana Ave. 377' sly. from E. Maude St. Elev. = 86.72

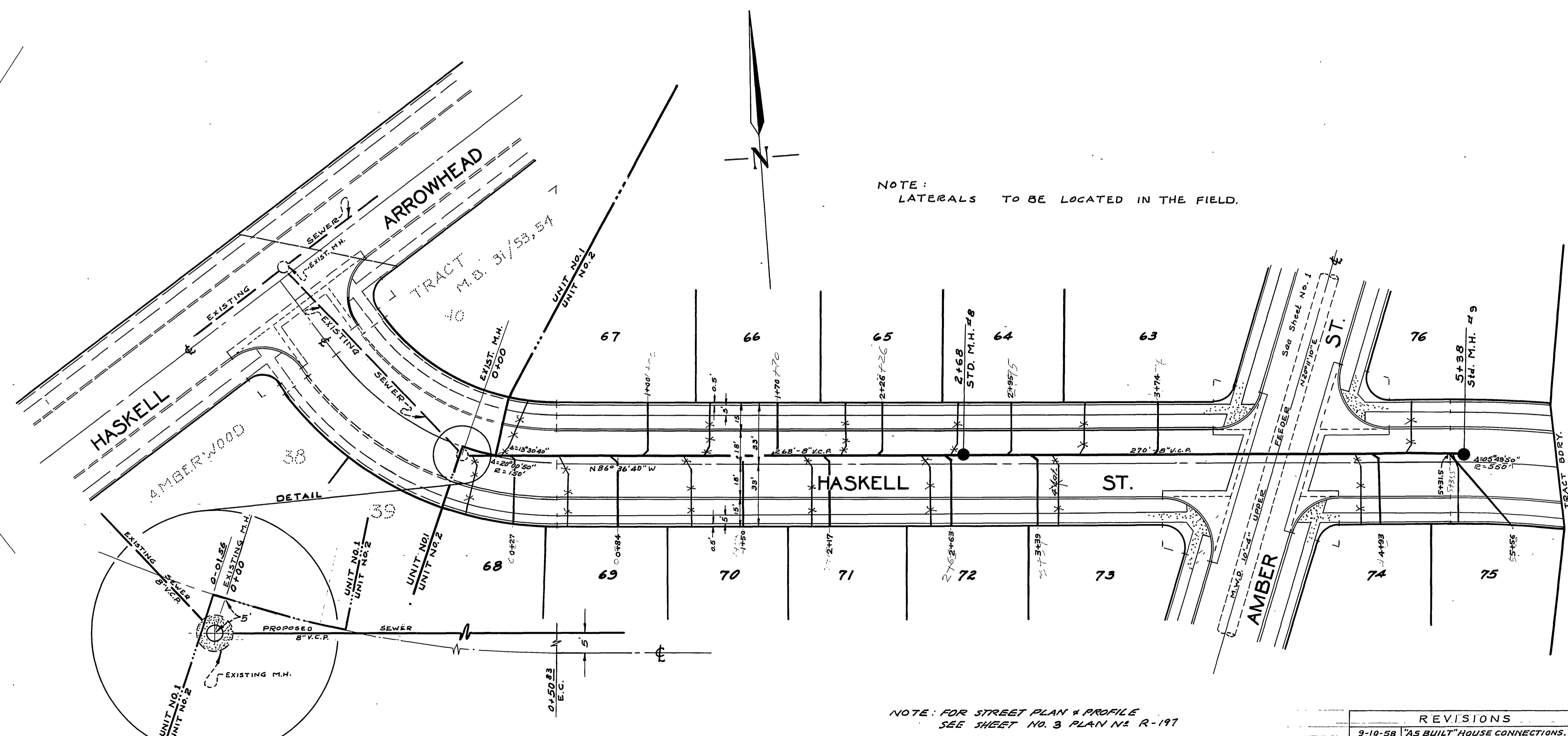
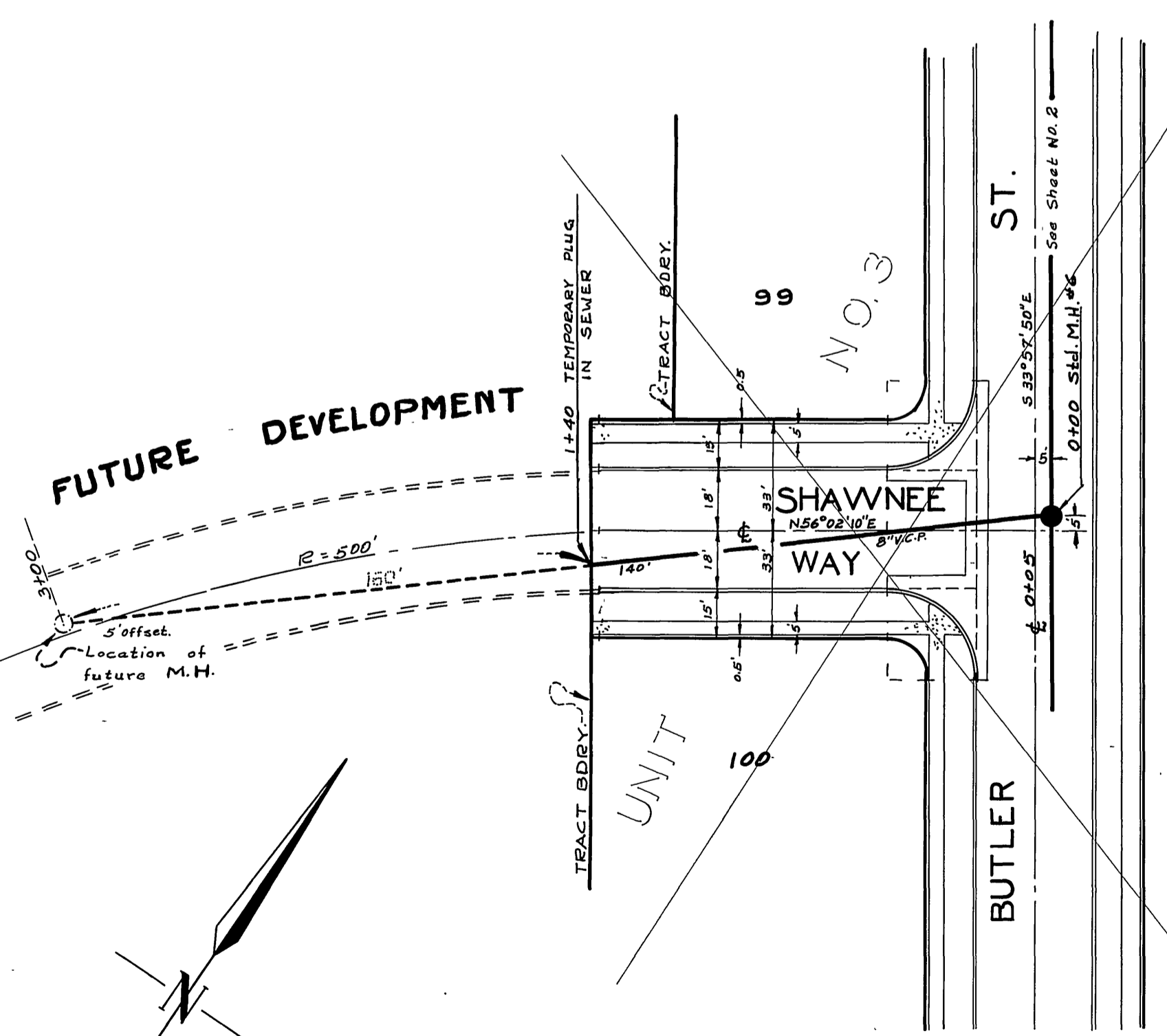
B.M. - L-T in center of 1/4" cement dike of Riverside Water Co. canal at sly. end of Amber St. Elev. = 84.81

NOTE: FOR STREET PLAN & PROFILE SEE SHEET NO. 2 PLAN NO. R-197



BENCH MARKS

T.B.M. (B) - 20' Spt. in Power Pole No. 8290-J on Sly. Side of Indiana, 377' Wly. from Intc. of Indiana & Monroe ----- Elev. 816.22
 T.B.M. (C) - L&T Top of Concrete Dyke Nly. Side of Canal Station 10+73.57 on Amber Street ----- Elev. 842.81



NOTE: LATERALS TO BE LOCATED IN THE FIELD.

NOTE: FOR STREET PLAN & PROFILE SEE SHEET NO. 3 PLAN NO. R-197

PROPERTY OF
 CITY OF RIVERSIDE
 DEPT. OF PUBLIC WORKS
 ENGINEERING DIVISION

J.F. DAVIDSON-CIVIL ENGINEER
 R.E. No. 862
 RIVERSIDE, CALIFORNIA
 APPROVED BY *J. F. Davidson* DATE 3-5-58

CITY OF RIVERSIDE, CALIFORNIA
 DEPARTMENT OF PUBLIC WORKS

SEWER PLAN & PROFILE
 HASKELL STREET
 UNIT No. 2
 AMBER WOOD TRACT
 HORIZ. SCALE 1" = 40' VERT. SCALE 1" = 4'

REVISIONS	
9-10-58	AS BUILT HOUSE CONNECTIONS. N.Ball

APPROVED BY *J. F. Davidson*
 Director of Public Works
 DATE July 7, 1958
 NO. 5-9-A
 SHEET 2 OF 2