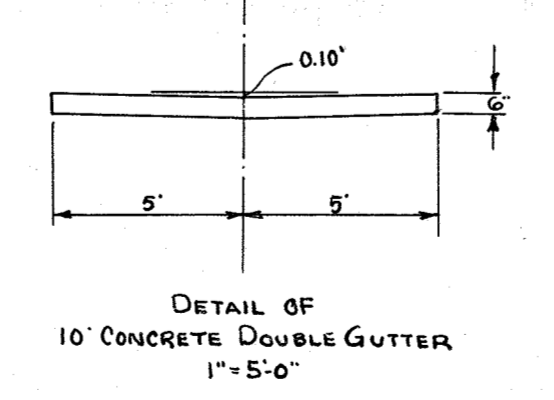
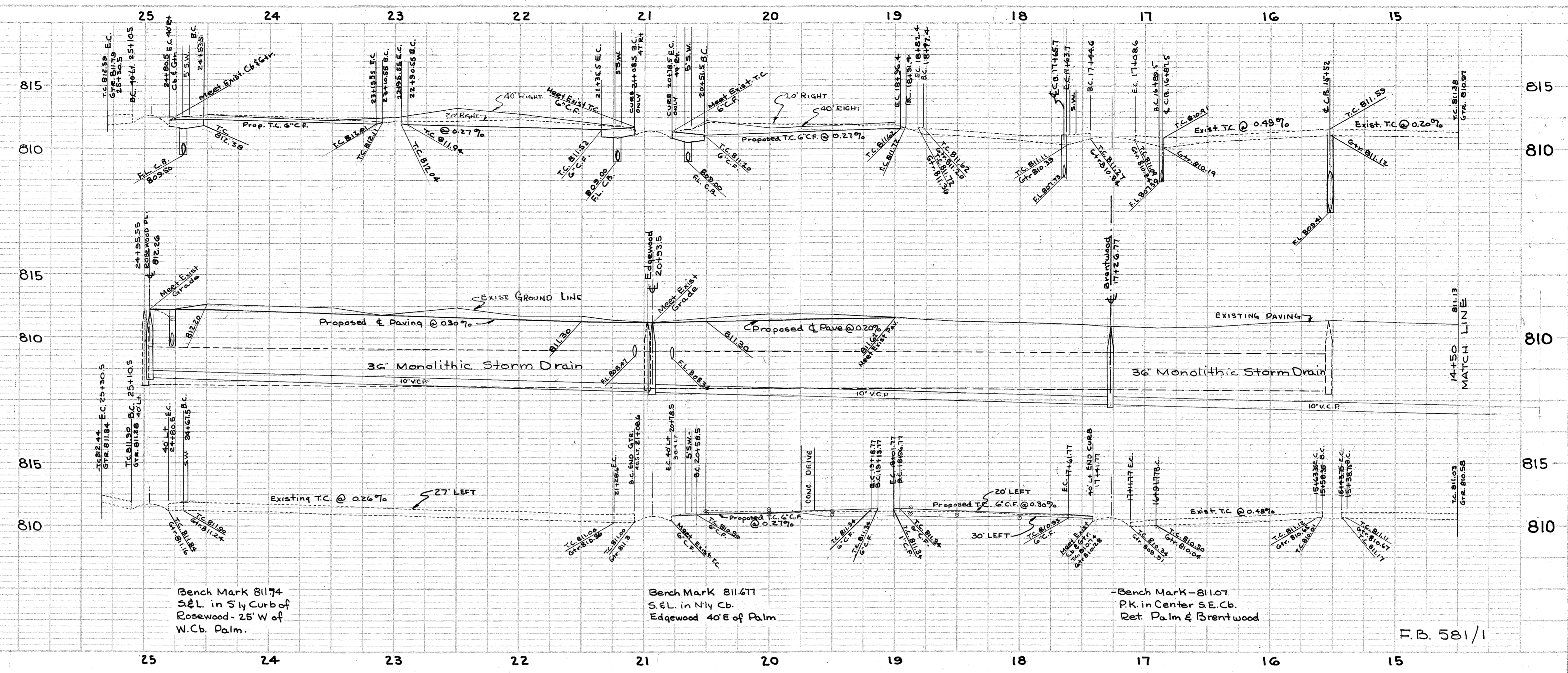


• WATER METERS, UTILITY POLES, ETC.
 TO BE RELOCATED BY UTILITY COMPANIES



REVISIONS		CITY OF RIVERSIDE CALIFORNIA DEPARTMENT OF PUBLIC WORKS	
MARK	DATE	DESCRIPTION	

DESIGNED BY: <i>J. A. ...</i>	CHECKED BY: <i>A. S. ...</i>	APPROVED BY: <i>J. J. ...</i>	R-2
DRAWN BY: <i>Dale ...</i>	RECOMMENDED BY: <i>Hall ...</i>	DIRECTOR OF PUBLIC WORKS	
DATE: Feb. 2, 1956		ASSISTANT CITY ENGINEER	

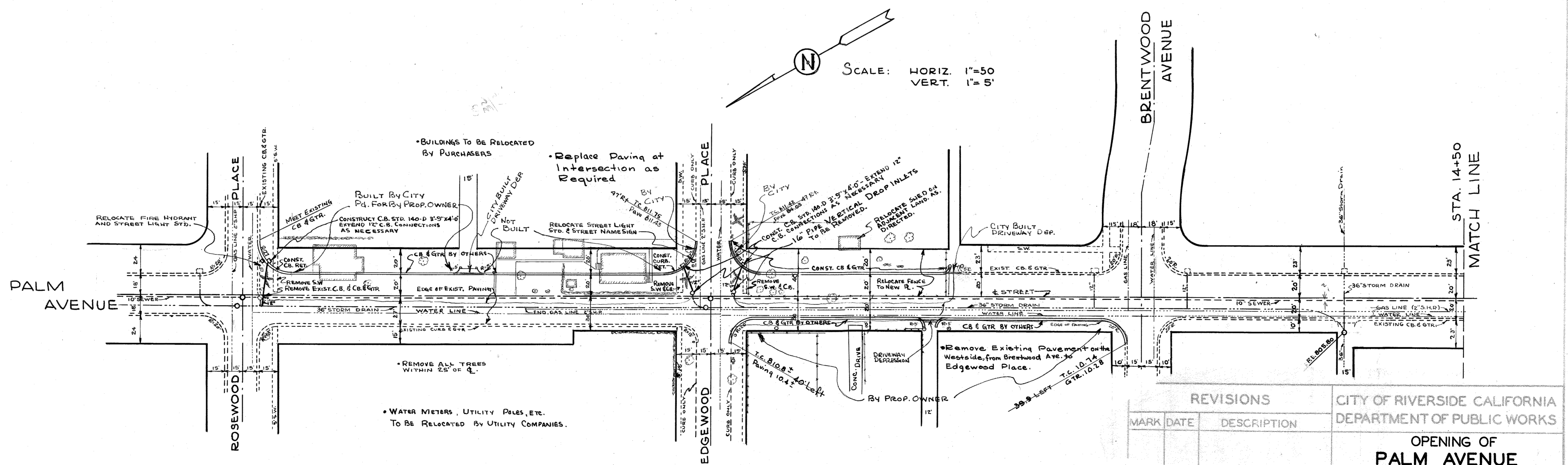


Bench Mark 81174
 S&L in S ly Curb of
 Rosewood - 25' W of
 W. Cb. Palm.

Bench Mark 81171
 S&L in N ly Cb.
 Edgewood 40' E of Palm

Bench Mark - 81107
 P.K. in Center SE. Cb.
 Ret. Palm & Brentwood

F.B. 581/1



- BUILDINGS TO BE RELOCATED BY PURCHASERS
- Replace Paving at Intersection as Required
- REMOVE ALL TREES WITHIN 25' OF Q.
- WATER METERS, UTILITY POLES, ETC. TO BE RELOCATED BY UTILITY COMPANIES.

REVISIONS		CITY OF RIVERSIDE CALIFORNIA DEPARTMENT OF PUBLIC WORKS	
MARK	DATE	DESCRIPTION	

APPROVED BY: *[Signature]*
 DIRECTOR OF PUBLIC WORKS

DATE: Feb. 2, 1956

R-2

SHEET 3 OF 3

PROJECT: 581/1
 DRAWING NO.: 581/1-1
 DATE: 2/2/56

PLAN: 581/1-1
 PROJECT: 581/1
 DATE: 2/2/56