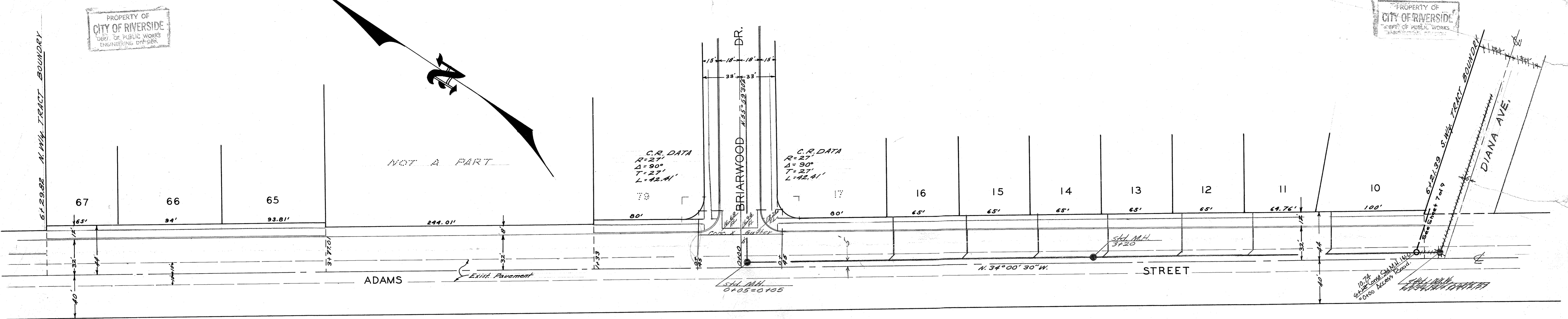


SHEET 1 OF 9 SHEETS

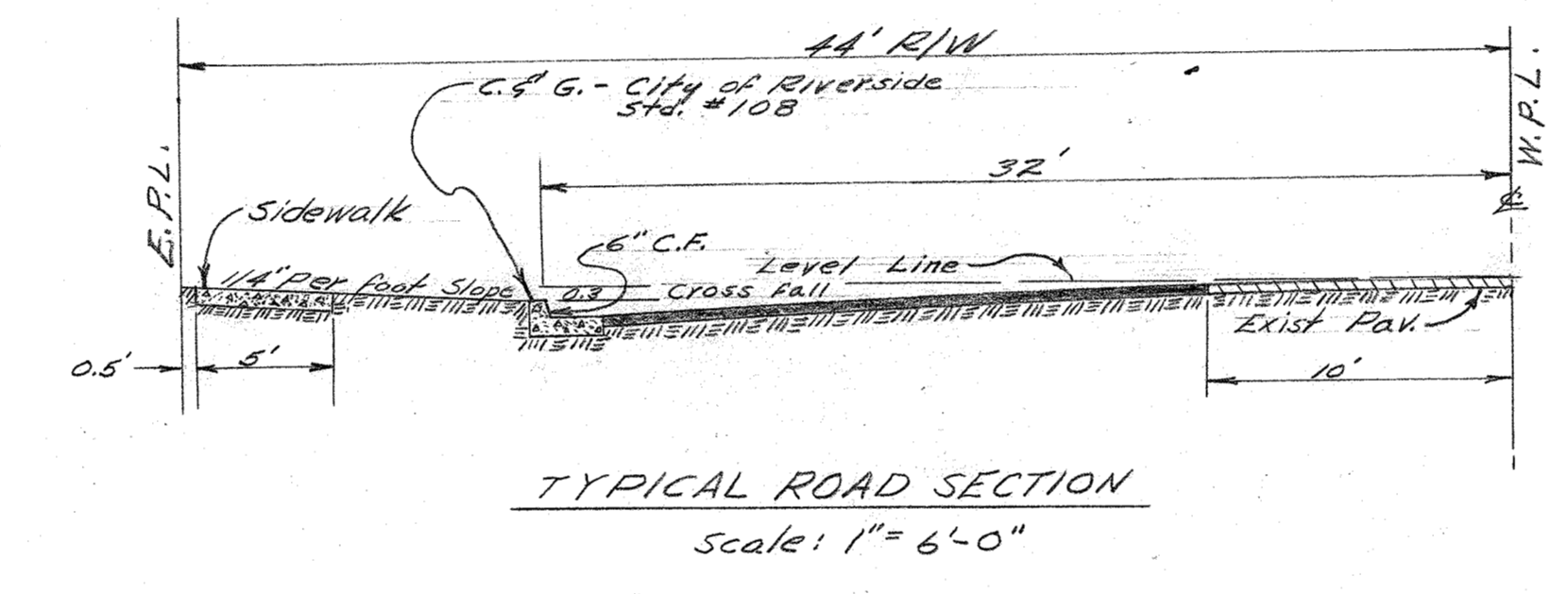
BENCH MARK  
City B.M. - Chisled "D" in N.W. Cor. Weir Box  
S.E. of P.B.L. # 3710, 400' S.E. of  
Magnolia Ave. Elev. 806.579'

PLAN & PROFILE  
'HELENA AVENUE'  
BRIARWOOD  
August, 1955 J.F. DAVIDSON C.E.  
Scale: Hor. 1"=40'  
Vert. 1"=4'

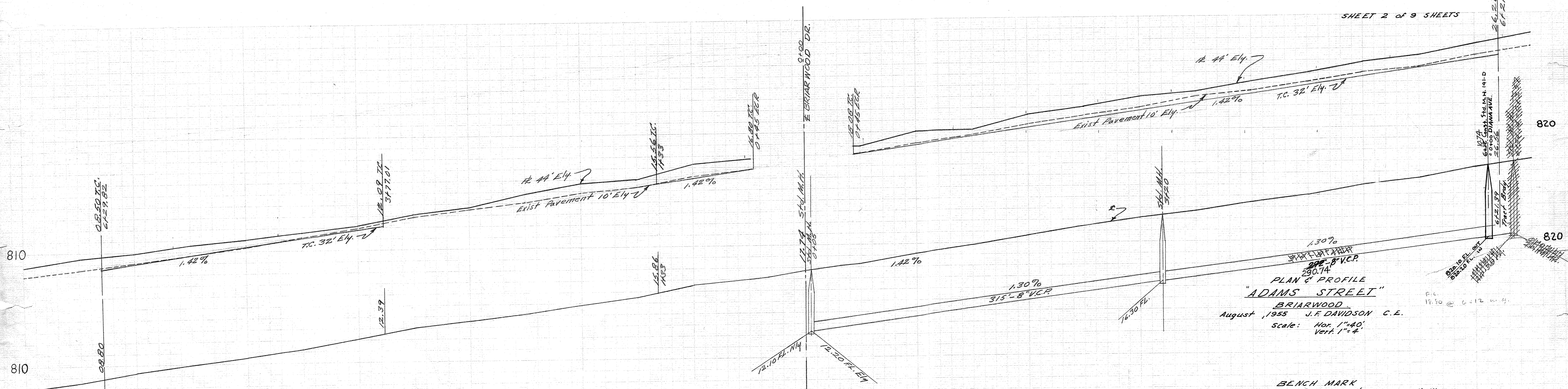
Approved: *J.F. Davidson*  
Director of Public Works



**ENGINEERS NOTE**  
Contractor shall Grade Gutter between Station 1+33 and Station 3+71.01



SHEET 2 of 9 SHEETS



**PLAN & PROFILE**  
**"ADAMS STREET"**  
BRIARWOOD  
August, 1955 J.F. DAVIDSON C.E.  
Scale: Hor. 1"=40', Vert. 1"=4'

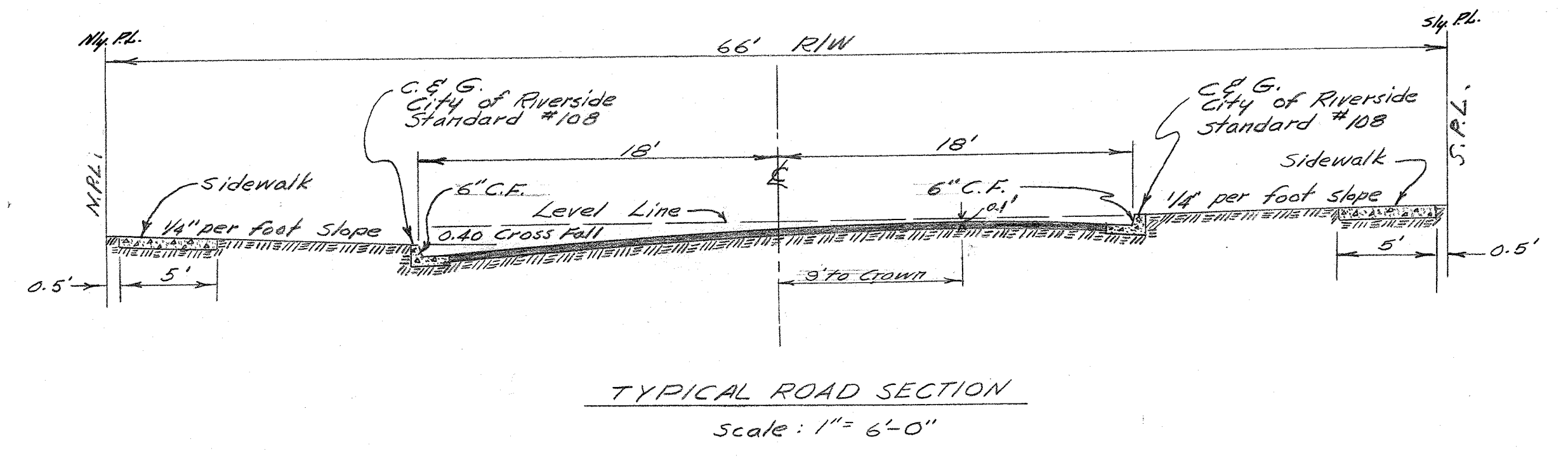
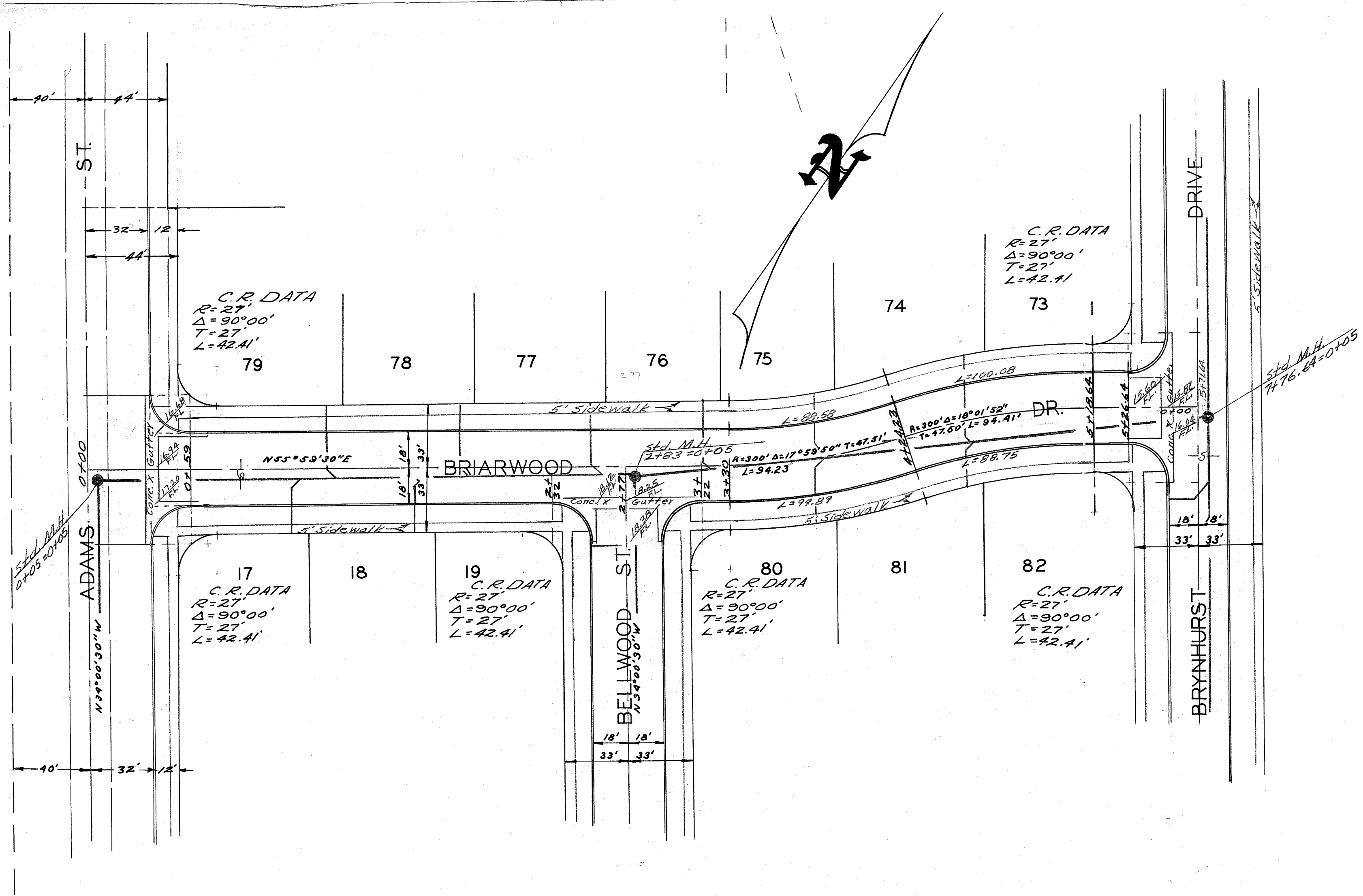
BENCH MARK  
City B.M. - R/R Spike in Pole # 3736-J, 95' W of Briarwood, W. Side Adams.  
Elev. 87.86

Approved: *J. F. Davidson* Director of Public Works Date 12-30-55

INDEXED 1956  
PROPERTY OF CITY OF RIVERSIDE  
DEPT. OF PUBLIC WORKS  
ENGINEERING DIVISION

PROPERTY OF CITY OF RIVERSIDE DEPT. OF PUBLIC WORKS ENGINEERING DIVISION

PROPERTY OF CITY OF RIVERSIDE DEPT. OF PUBLIC WORKS ENGINEERING DIVISION



SHEET 3 of 9 SHEETS

BENCH MARK City B.M. - R/R Spike in P. Pole #3736-J, 85' N.W. of Briarwood, on Wly Side of Adams Elev. 817.86'

PLAN & PROFILE "BRIARWOOD DRIVE" BRIARWOOD

August, 1955 J.F. DAVIDSON C.E. Scale: Hor. 1" = 40' Vert. 1" = 4'

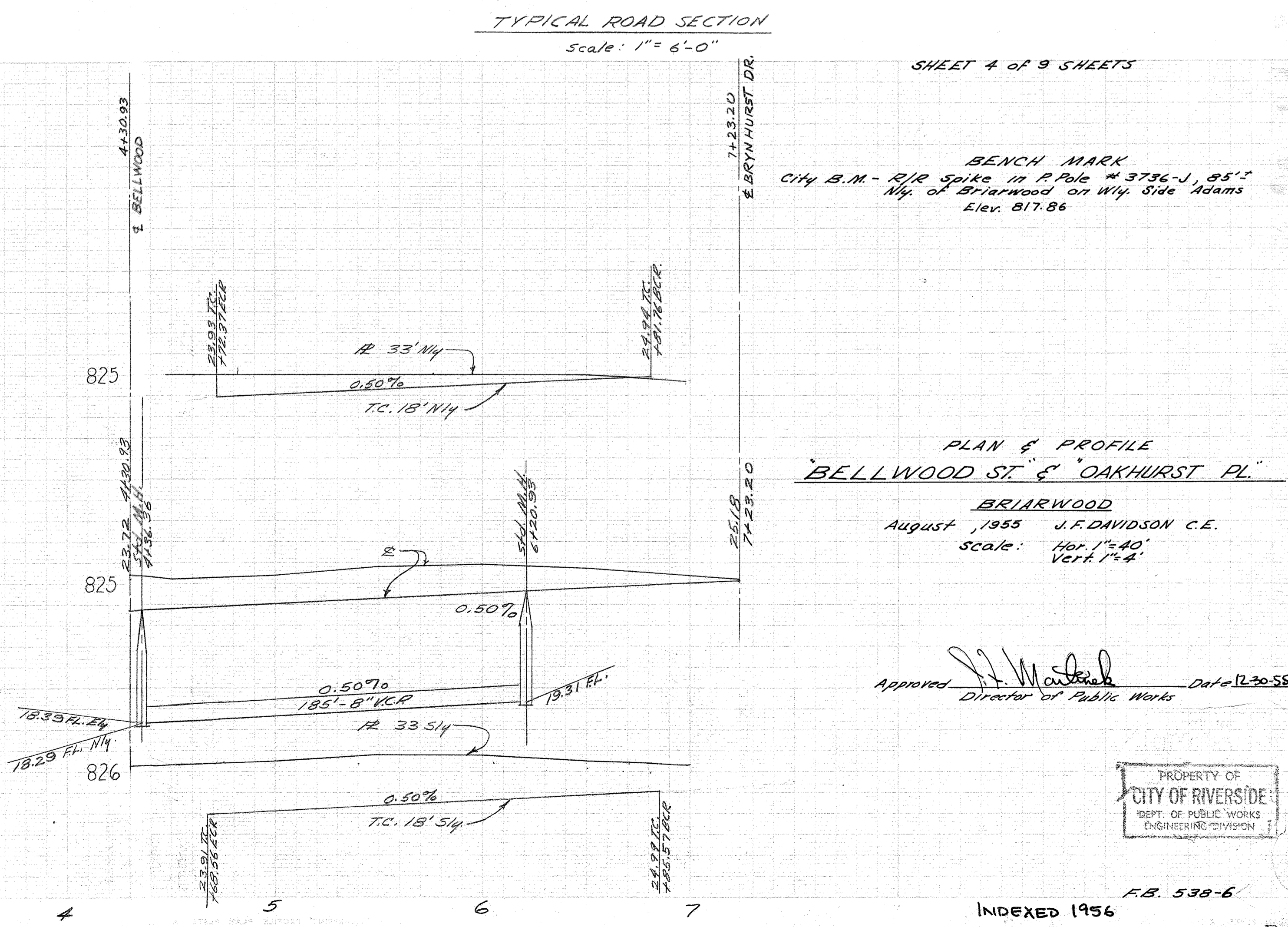
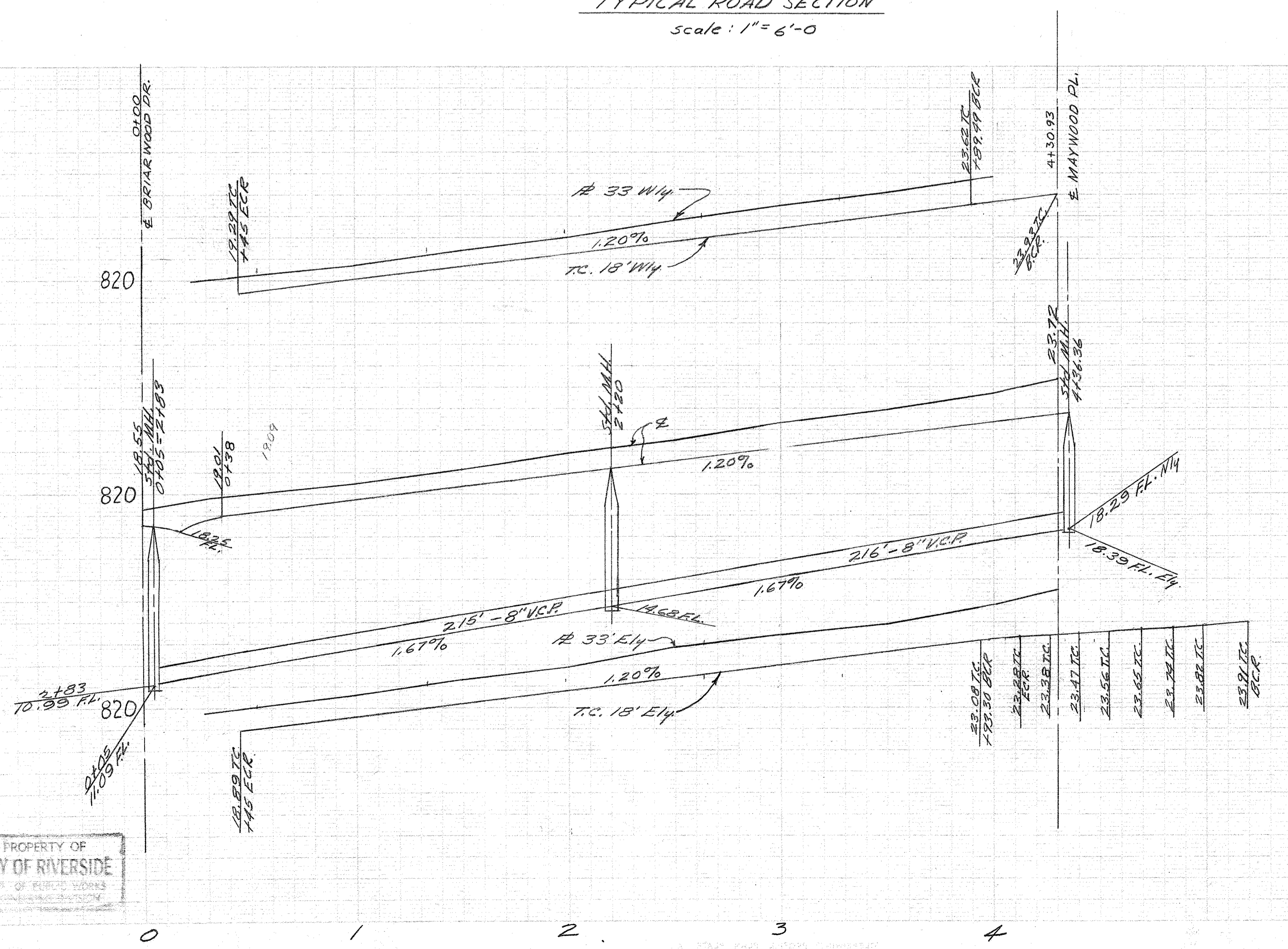
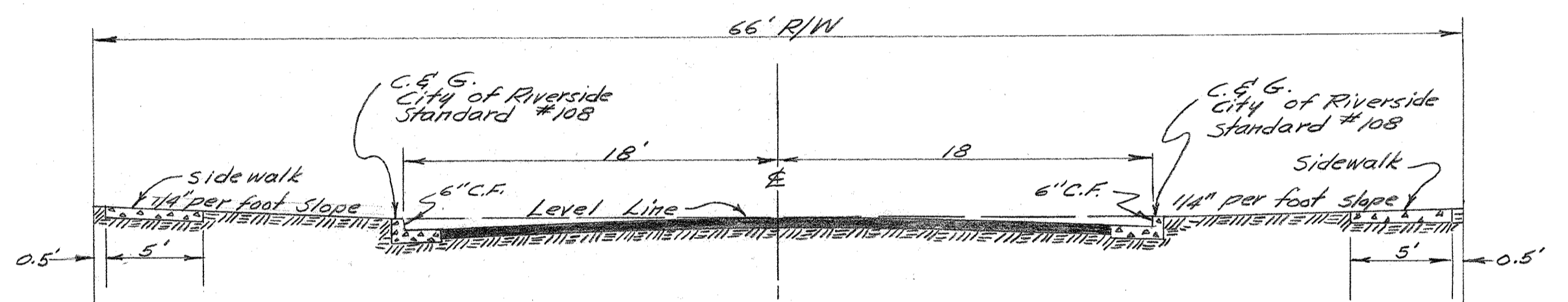
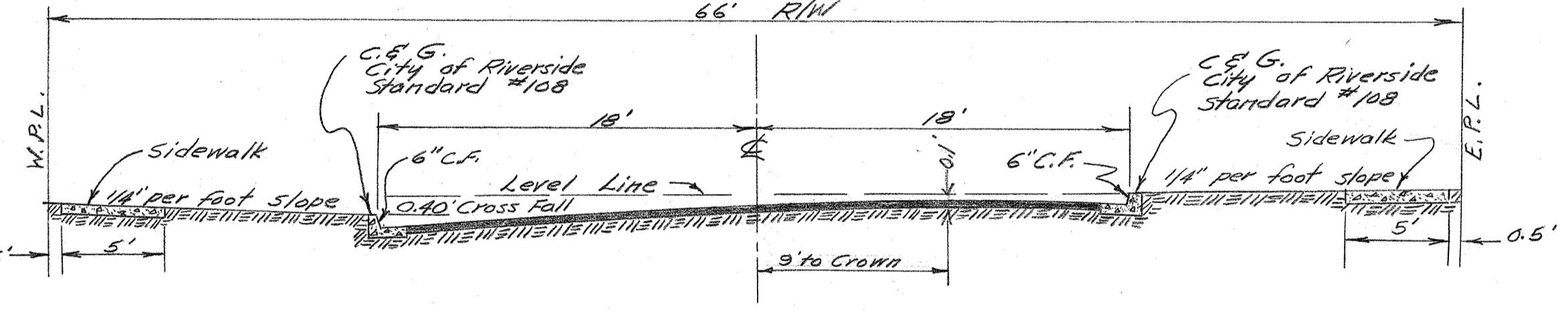
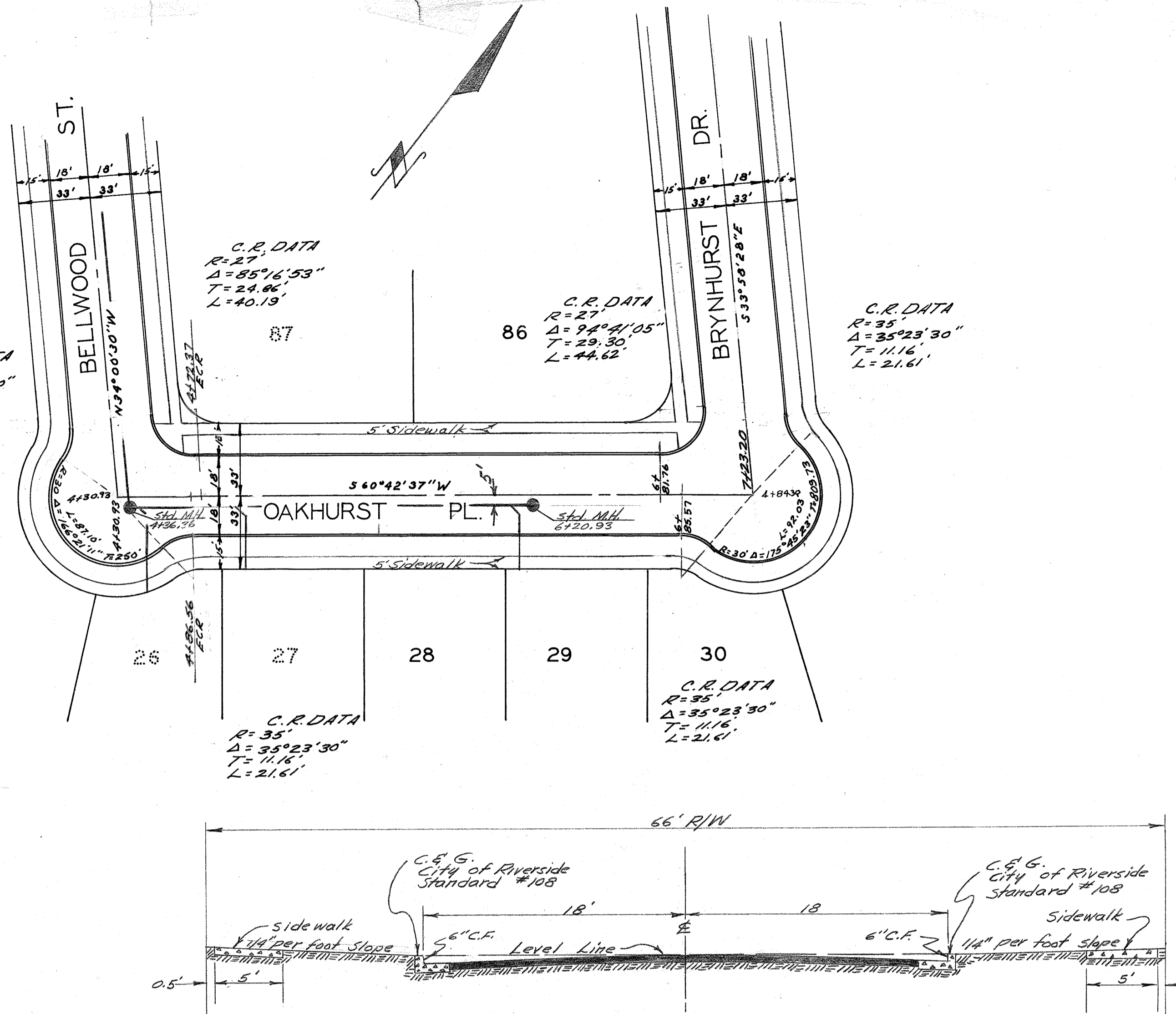
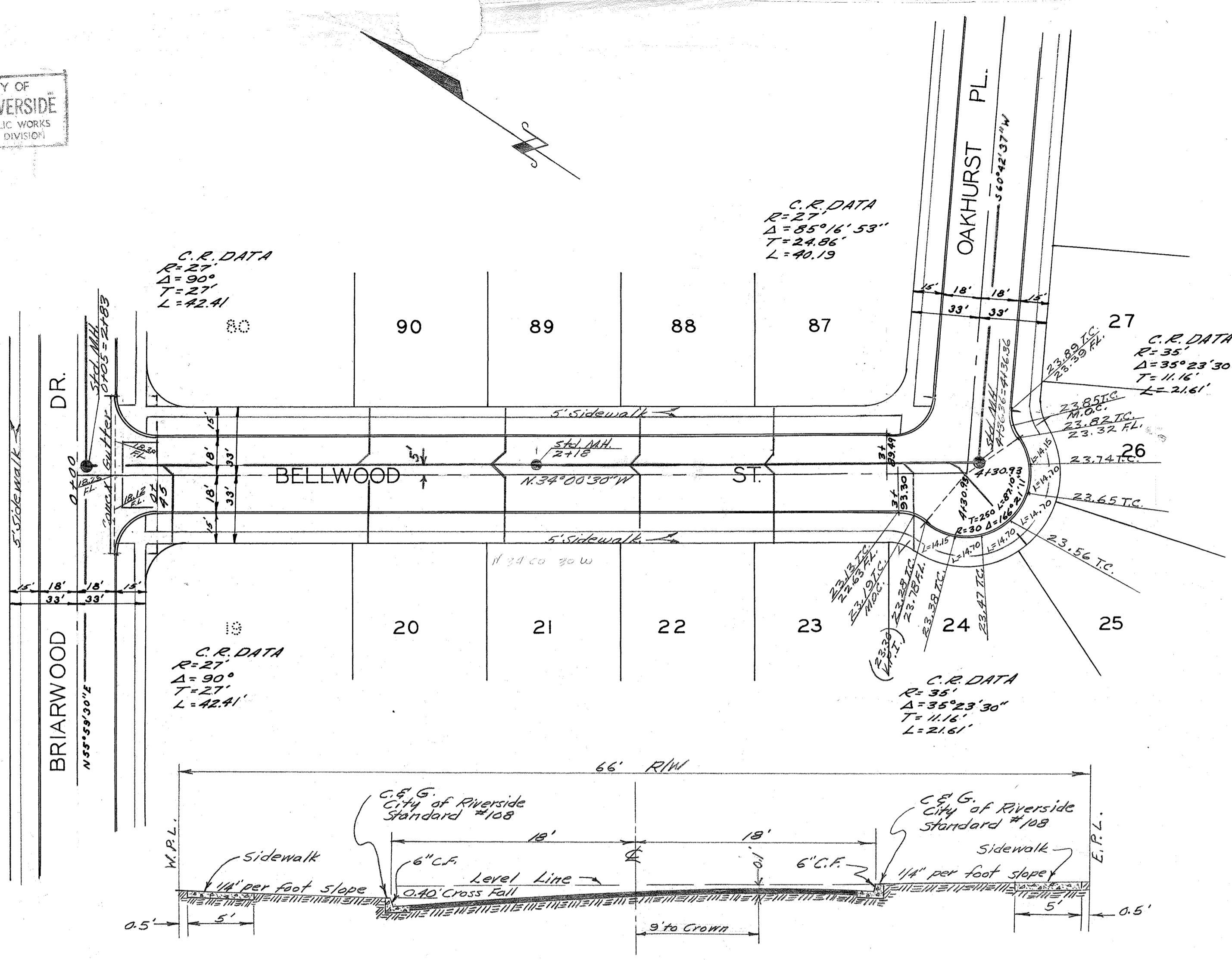
Approved [Signature] Date 12-30-55 Director of Public Works

Approved as Revised J.F. Martinek Date 1-15-56 by [Signature]

PROPERTY OF CITY OF RIVERSIDE DEPT. OF PUBLIC WORKS ENGINEERING DIVISION

INDEXED 1956

FB. 538-16



SHEET 4 of 9 SHEETS

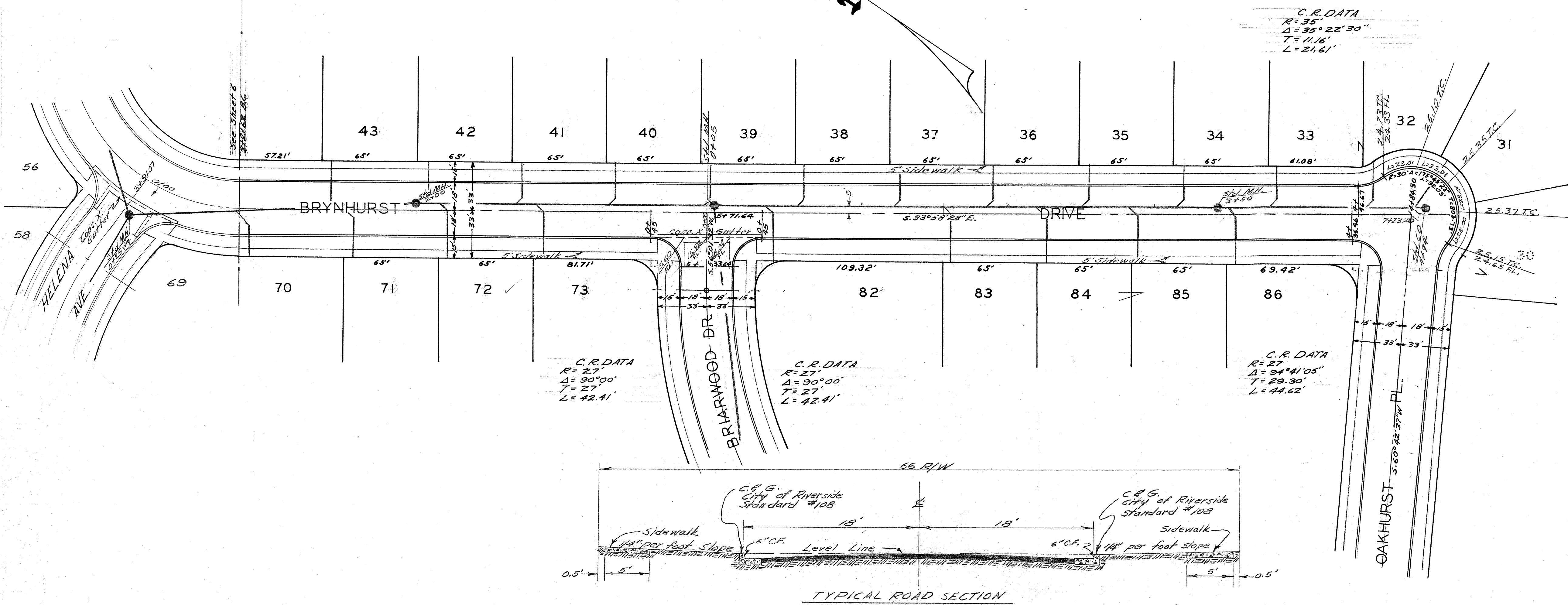
BENCH MARK  
City B.M. - R/R Spike in Pole # 3736-J, 85.1'  
W. of Briarwood on W. Side Adams  
Elev. 817.86

PLAN & PROFILE  
"BELLWOOD ST." & "OAKHURST PL."  
BRIARWOOD  
August, 1955 J.F. DAVIDSON C.E.  
Scale: Hor. 1"=40'  
Vert. 1"=4'

Approved: J.F. Davidson  
Director of Public Works Date: 12-30-55

PROPERTY OF CITY OF RIVERSIDE DEPT. OF PUBLIC WORKS ENGINEERING DIVISION

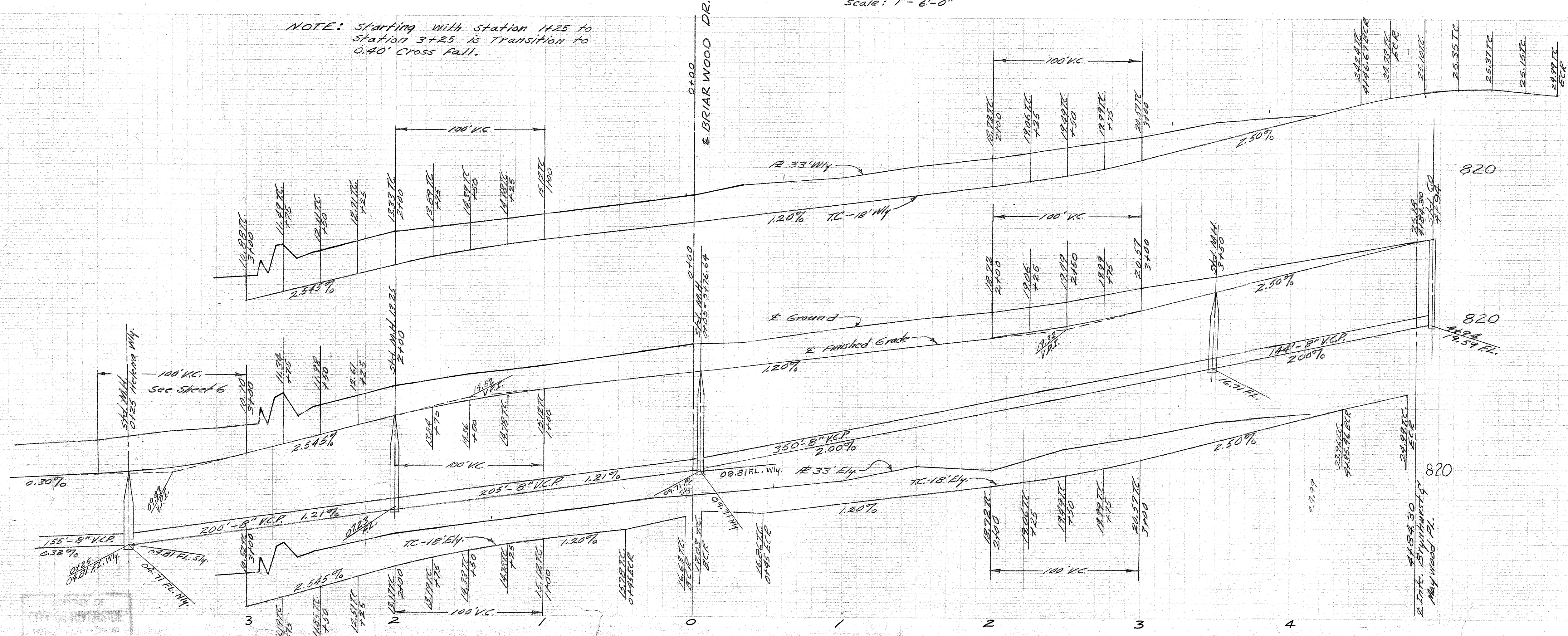
PROPERTY OF CITY OF RIVERSIDE DEPT. OF PUBLIC WORKS ENGINEERING DIVISION



NOTE: Starting with Station 1+25 to Station 3+25 is Transition to 0.40' Cross Fall.

SHEET 5 OF 9 SHEETS

BENCH MARK City B.M. - R/R Spike in Pole # 3736-J, 85' N. of Briarwood on W. Side Adams Elev. 817.86'



Approved [Signature] Director of Public Works Date 12-30-55  
 Approved as Revised J.F. Davidson Date 1-18-56  
 by [Signature]

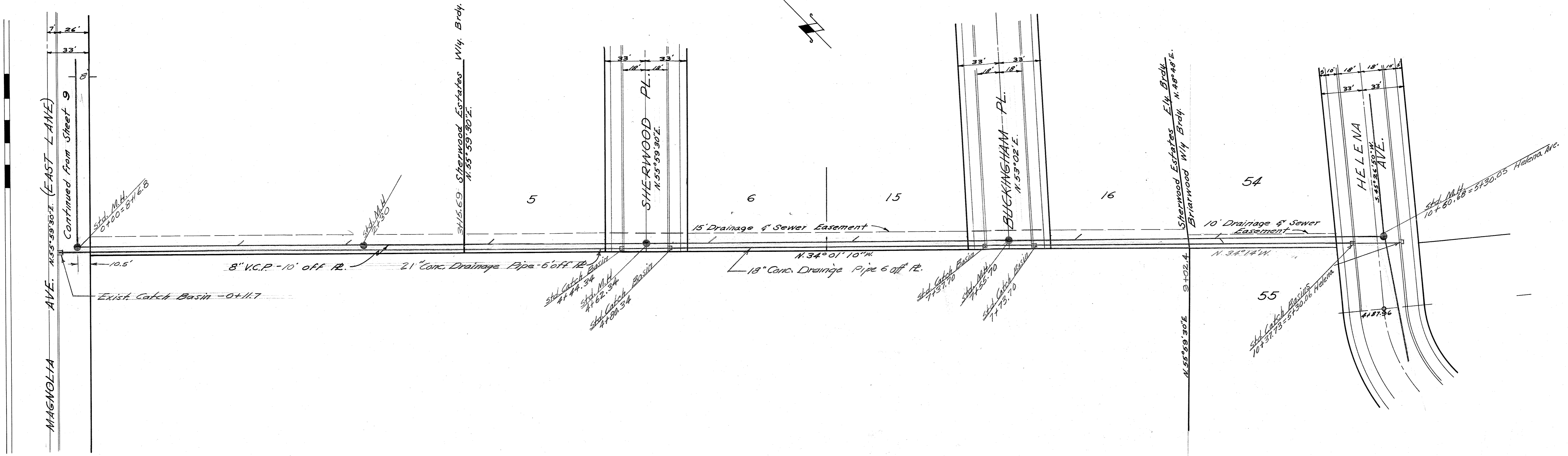
PROPERTY OF CITY OF RIVERSIDE DEPT. OF PUBLIC WORKS ENGINEERING DIVISION



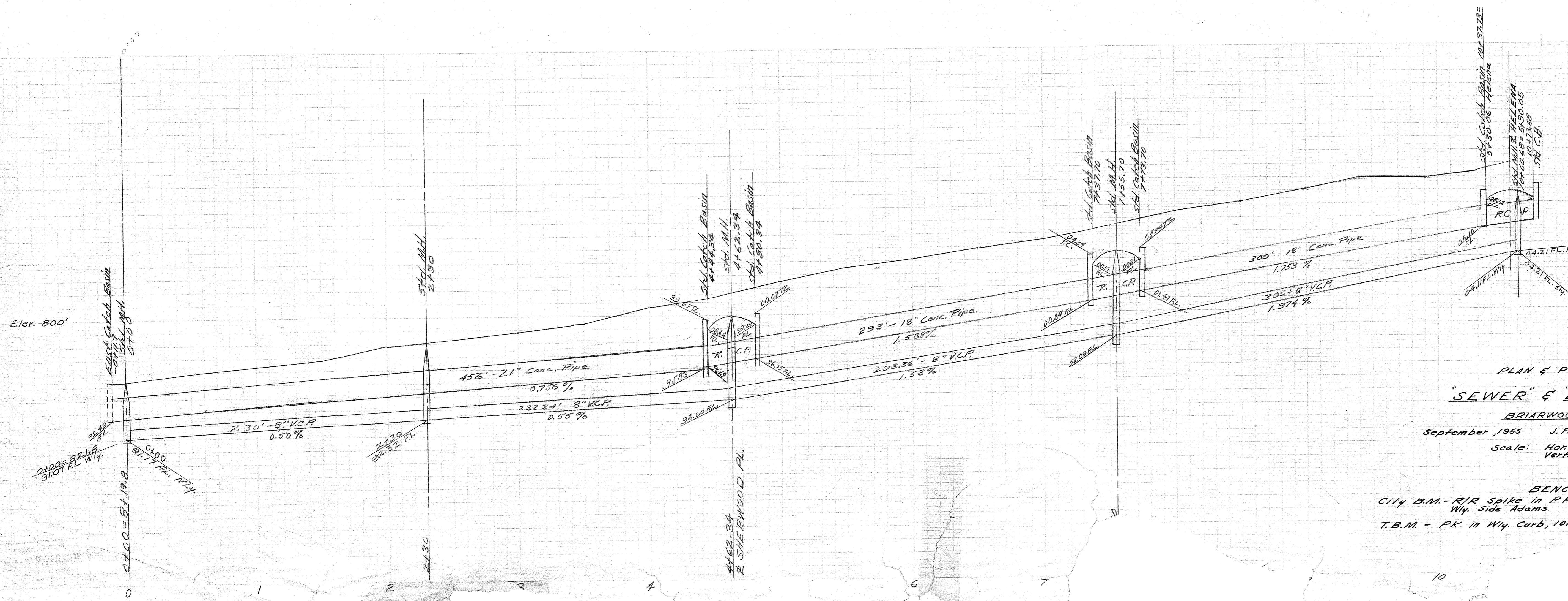


PROPERTY OF  
CITY OF RIVERSIDE  
DEPT. OF PUBLIC WORKS  
ENGINEERING DIVISION

PROPERTY OF  
CITY OF RIVERSIDE  
DEPT. OF PUBLIC WORKS  
ENGINEERING DIVISION



SHEET 8 of 9 SHEETS



Approved *J. J. Martini* Date Dec. 30, 1956  
 Director of Public Works

Revised Approved *J. J. Martini* Date 1-1-56  
 Director of Public Works

PLAN & PROFILE  
 "SEWER" & "DRAINAGE"

BRIARWOOD  
 September, 1955 J.F. DAVIDSON C.E.  
 Scale: Hor. 1"=40'  
 Vert. 1"=4'

PROPERTY OF  
 CITY OF RIVERSIDE  
 DEPT. OF PUBLIC WORKS  
 ENGINEERING DIVISION

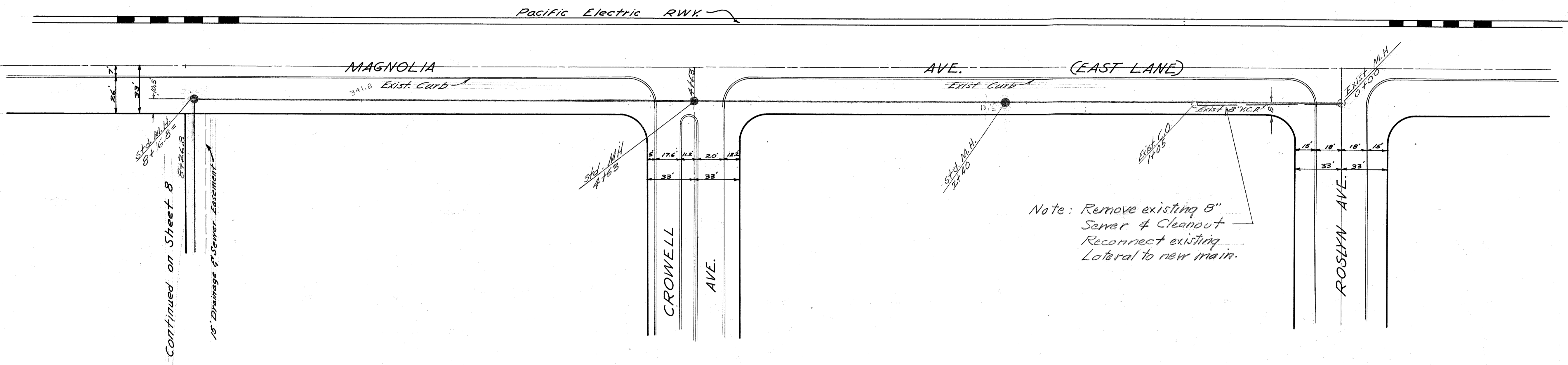
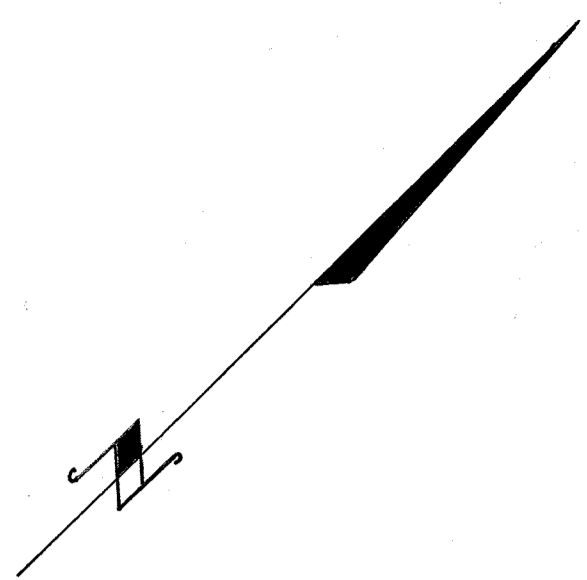
BENCH MARK  
 City B.M. - R/R Spike in P.Pole #3736 J, 85± N. of Briarwood  
 W. side Adams. Elev. 817.86  
 T.B.M. - P.K. in W. Curb, 101± S. of Brighturst. Elev. 815.17



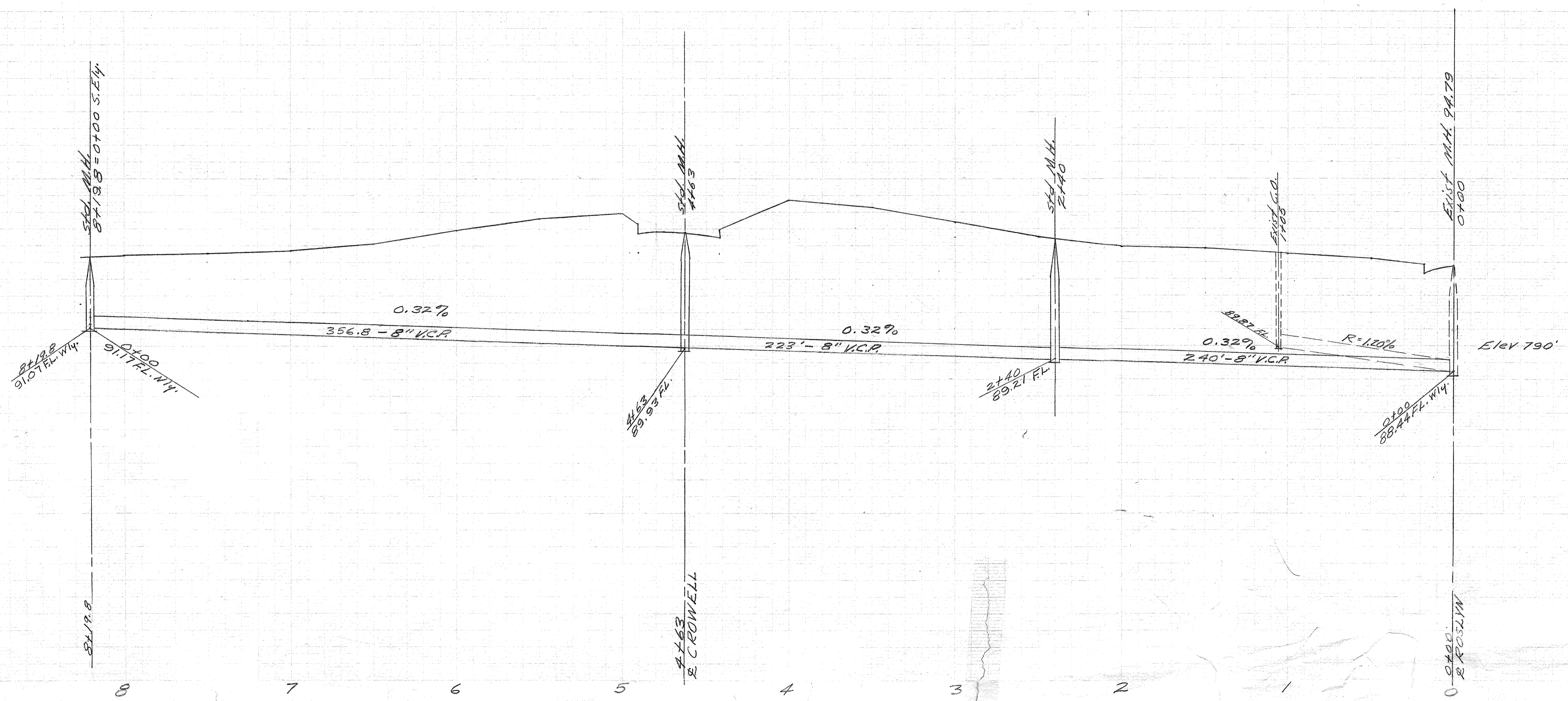
PROPERTY OF  
CITY OF RIVERSIDE  
DEPT. OF PUBLIC WORKS  
ENGINEERING DIVISION

PROPERTY OF  
CITY OF RIVERSIDE  
DEPT. OF PUBLIC WORKS  
ENGINEERING DIVISION

Briarwood



SHEET 9 OF 9 SHEETS



BENCH MARK  
City B.M.-R/R Spike in P. Pole # 3736 J, 85' ± W. of Briarwood Wp. Side Adams. Elev. 817.86'  
T.B.M. -PK. in Wp. Curb 101' ± S.W. of Brynhurst Elev. 815.17'

PLAN & PROFILE  
"SEWER LINE"  
Connecting Briarwood Subd to Exist. Sewer Line  
BRIARWOOD  
September, 1955 J.F. DAVIDSON C.E.  
Scale: Hor. 1"=40'  
Vert. 1"=4'

Approved: *J.F. Davidson* Director of Public Works Date: Dec 30, 1955

PROPERTY OF  
CITY OF RIVERSIDE  
DEPT. OF PUBLIC WORKS  
ENGINEERING DIVISION

PROPERTY OF  
CITY OF RIVERSIDE  
DEPT. OF PUBLIC WORKS  
ENGINEERING DIVISION