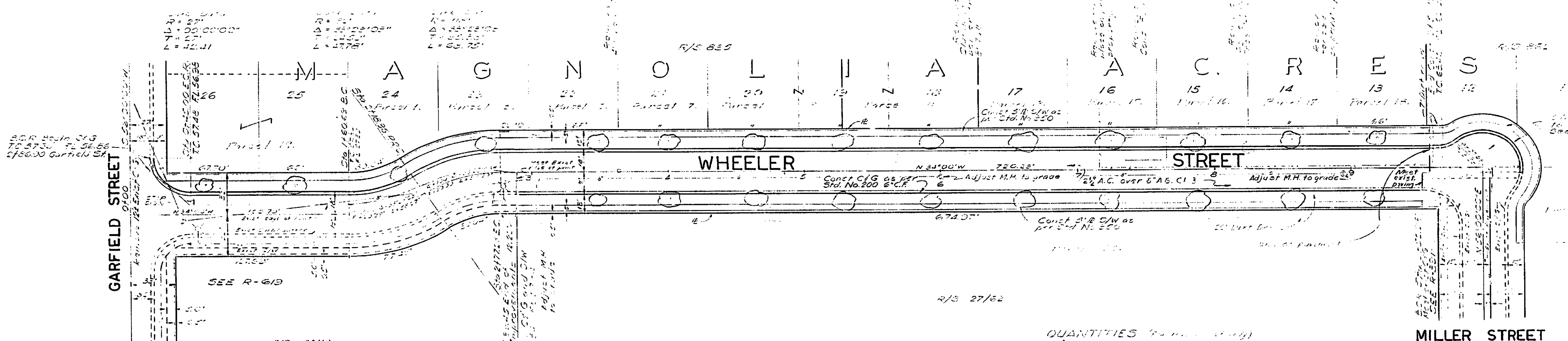
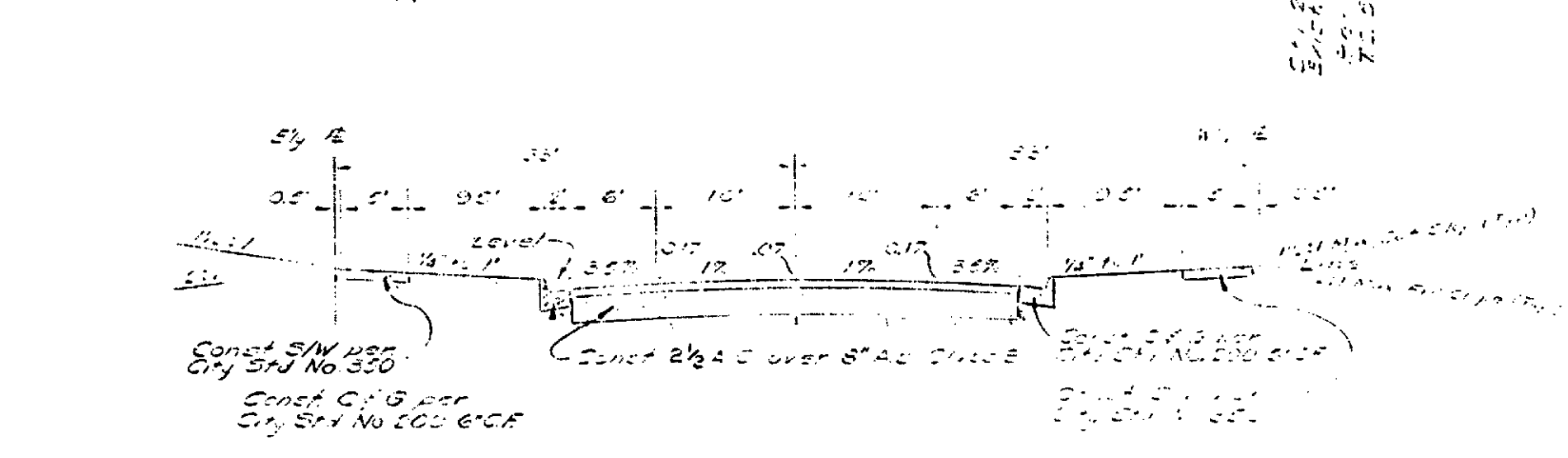


Scale:
Horizontal 1"=40'
Vertical 1"=4'



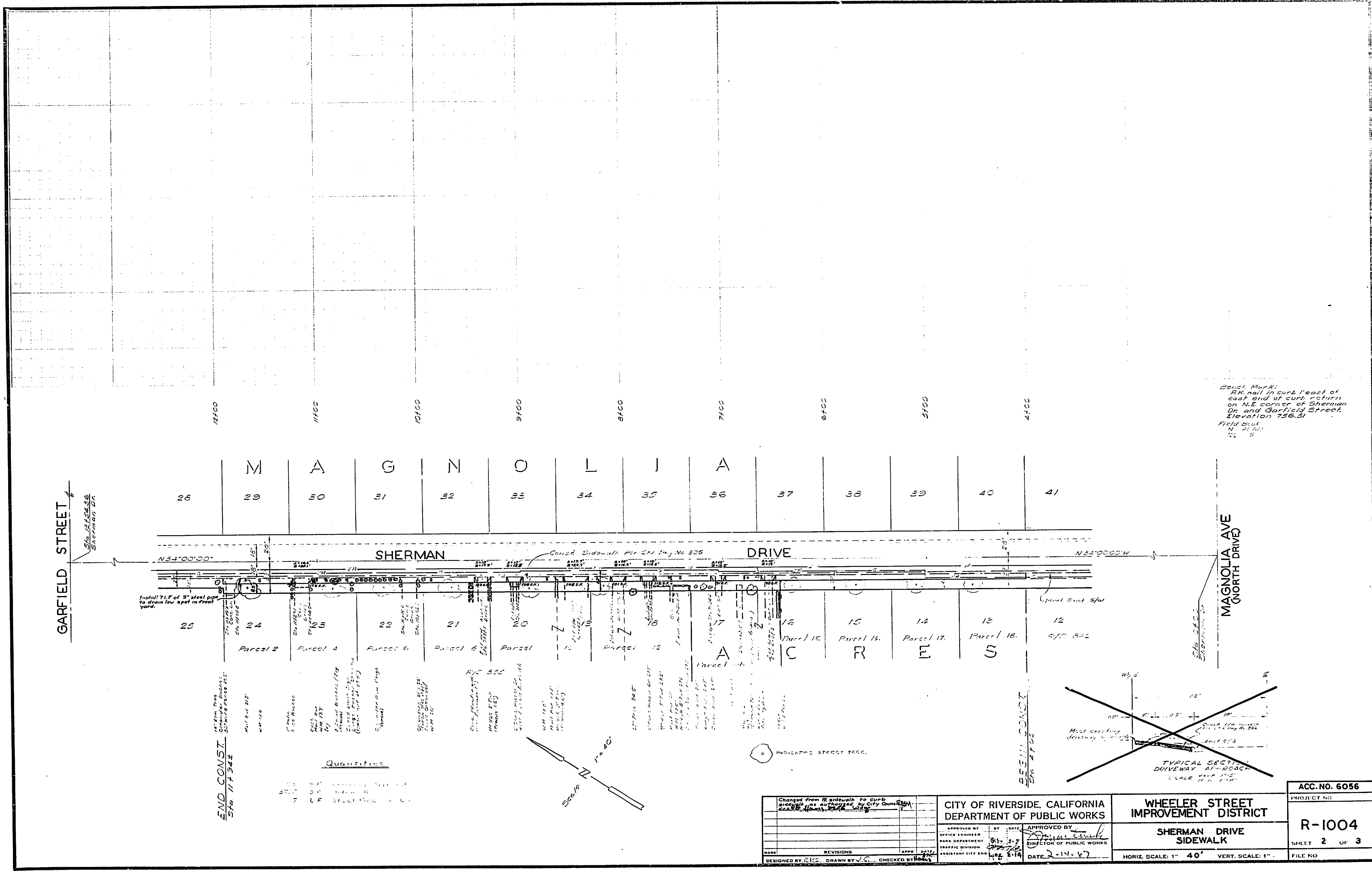
Notes:
1. All work to be done by others.
2. All work to be done by others.
3. All work to be done by others.



TYPICAL SECTION
S.W. 2'-0" TO S.W. 2'-0"
S.W. 2'-0" TO S.W. 2'-0"
S.W. 2'-0" TO S.W. 2'-0"

QUANTITIES (See Notes 1 & 2)
12.00 LF CURB
72.00 LF GUTTER
22.00 LF SIDEWALK
3 EA. MANHOLE T. 18"

CITY OF RIVERSIDE, CALIFORNIA DEPARTMENT OF PUBLIC WORKS		WHEELER STREET IMPROVEMENT DISTRICT		ACC. NO. 6056
APPROVED BY OFFICE ENGINEER DATE 12/1/62	BY DATE 12/1/62	APPROVED BY DIRECTOR OF PUBLIC WORKS DATE 12/1/62	WHEELER STREET CURBS GUTTERS SIDEWALKS	R-1004 1 3
DESIGNED BY DRAWN BY CHECKED BY	APPR. DATE	DATE	HORIZ. SCALE: 1"=40'	VERT. SCALE: 1"=4'

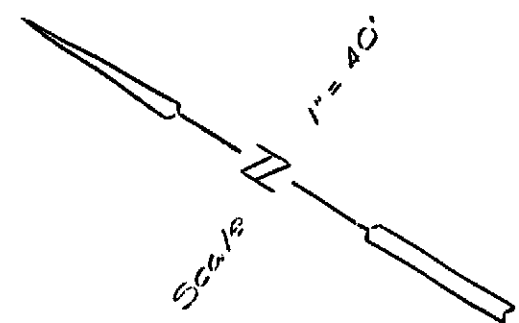


Bevel Mark:
 RK nail in curb east of
 east end of curb return
 on NE corner of Sherman
 Dr. and Garfield Street.
 Elevation 756.31
 Field Book
 N 45 22
 72 3

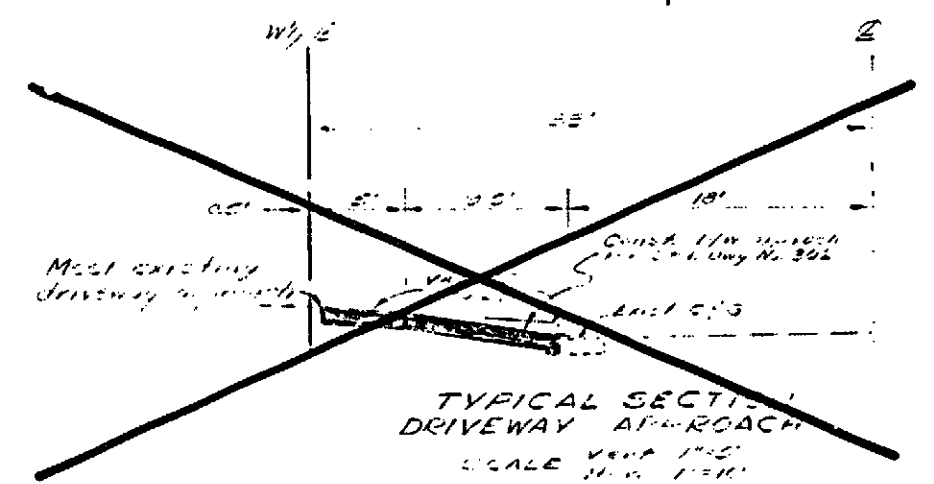
Install 71' of 3" steel pipe
 to drain low spot in front
 yard.

14' from Prop.
 14' from Prop.
 END CONST.
 SFR 117342

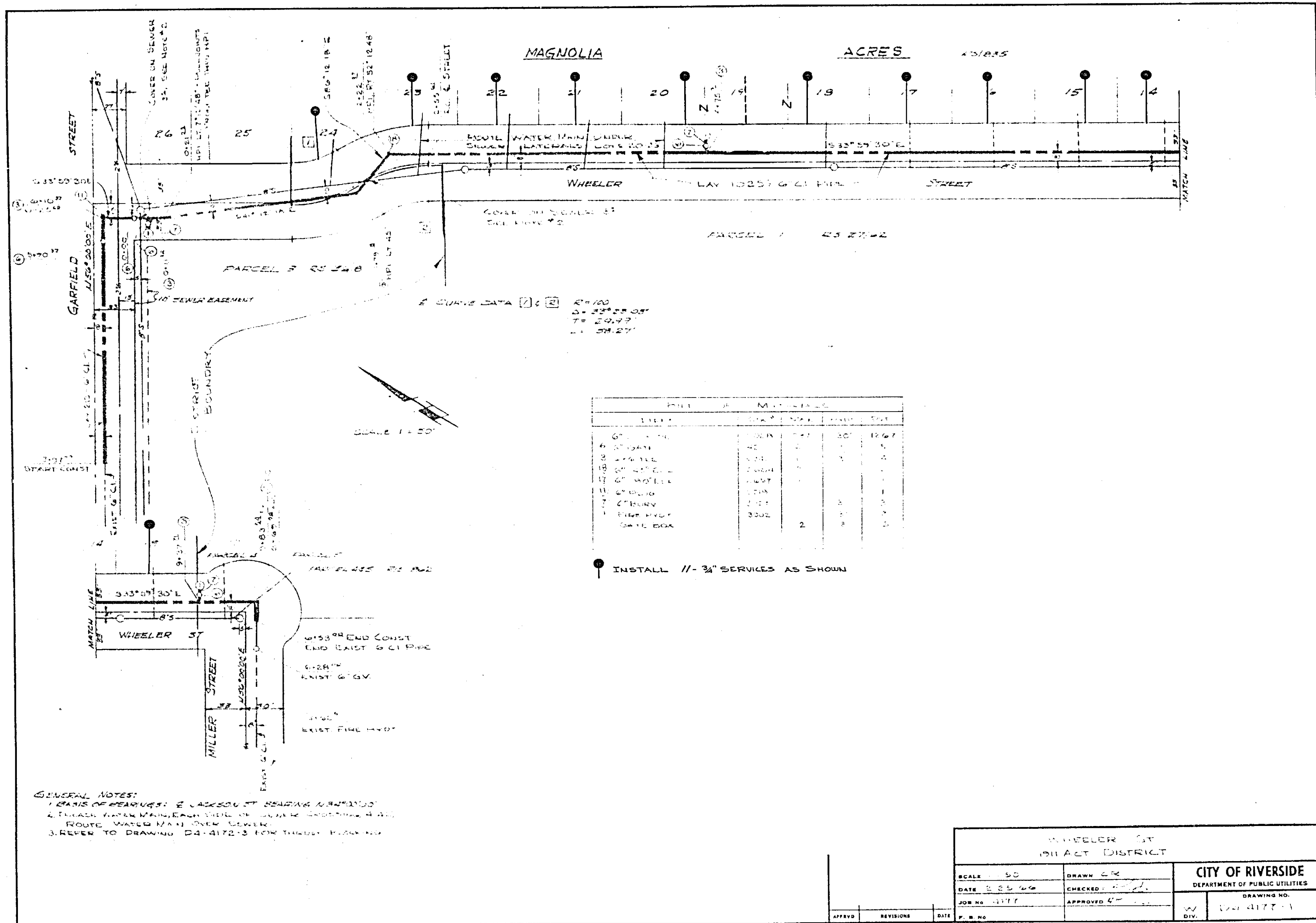
Quantities
 3' LF 3" Steel Pipe
 3' LF 3" Steel Pipe
 3' LF 3" Steel Pipe



INDICATE STREET TACK.



Changed from R sidewalk to curb sidewalk as authorized by City Council Resolution No. 2246, 11/17/42		CITY OF RIVERSIDE, CALIFORNIA DEPARTMENT OF PUBLIC WORKS		WHEELER STREET IMPROVEMENT DISTRICT		ACC. NO. 6056 PROJECT NO.	
APPROVED BY OFFICE ENGINEER PARK DEPARTMENT TRAFFIC DIVISION ASSISTANT CITY ENG.		BY DATE [Signature] 11-17-42		APPROVED BY DIRECTOR OF PUBLIC WORKS [Signature]		R-1004 SHEET 2 OF 3	
DESIGNED BY ERS. DRAWN BY J.C. CHECKED BY [Signature]		DATE 11-17-42		HORIZ. SCALE: 1" = 40' VERT. SCALE: 1" = 10'		FILE NO.	



GENERAL NOTES:
 1. DATE OF REVISIONS & LATEST AT BEARING MAINTAINED
 2. EXISTING WATER MAINS EACH SIDE OF WHEELER STREET ARE 48" IN
 ROUTE WATER MAIN UNDER WHEELER
 3. REFER TO DRAWING 24-1172-3 FOR TRUSS FROM NW

WHEELER ST IMPROVEMENT DISTRICT		CITY OF RIVERSIDE DEPARTMENT OF PUBLIC UTILITIES	
SCALE: 50'	DRAWN BY: [Signature]	DATE: 2-23-67	CHECKED BY: [Signature]
JOB NO: 1177	APPROVED BY: [Signature]	DIV: [Blank]	DRAWING NO: 1177-11

CITY OF RIVERSIDE, CALIFORNIA DEPARTMENT OF PUBLIC WORKS		WHEELER STREET IMPROVEMENT DISTRICT		ACC. NO. 6056
APPROVED BY: [Signature] OFFICE ENGINEER DEPARTMENT OF PUBLIC WORKS		DATE: 2-14-67		PROJECT NO. R-1004
DESIGNED BY: [Blank]		DRAWN BY: [Blank]		SHEET 3 OF 3
CHECKED BY: [Blank]		DATE: 2-14-67		FILE NO.
HORIZ. SCALE: 1" = 50'		VERT. SCALE: 1" = 10'		