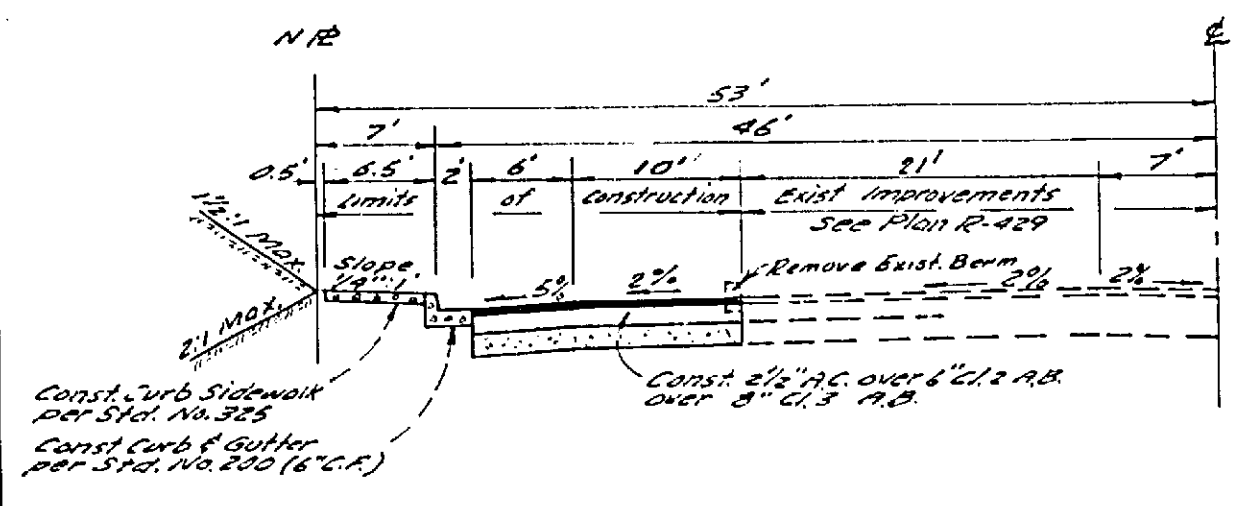
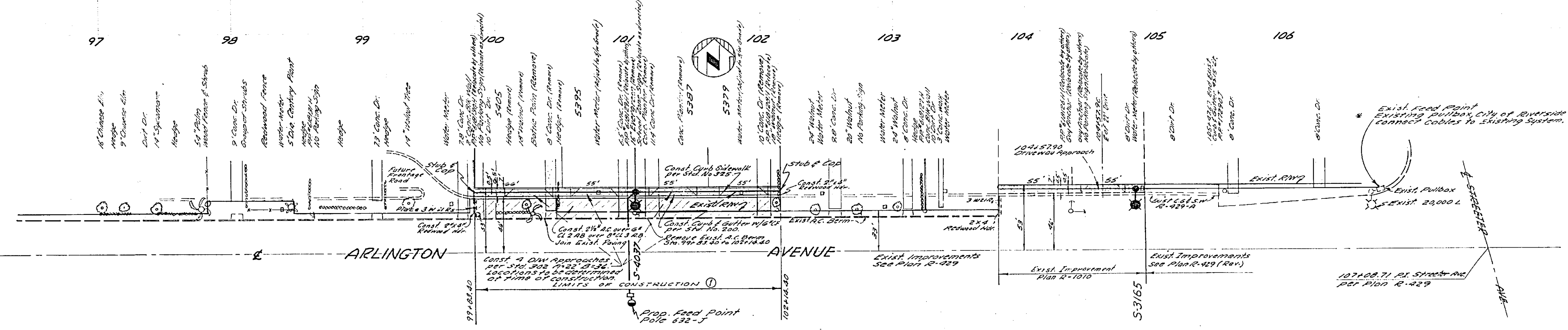


**STREET LIGHTING**  
**LEGEND:**  
 \* Indicates City of Riverside Marshallite light standards No. 88313 with 20,000 L. 200 W. Type III "Luminaire" mercury vapor luminaires, col. No. L1053A2 or approved equal.  
 □ Indicates No. 3 1/2 pullbox "Brooks Products Inc. or approved equal."  
 — Indicates 1" rigid galv. steel conduit, except as noted.  
 ○ Indicates Feed Point.

**NOTES:**  
 1. All street light standards and pullboxes to be located in the field.  
 2. All street light standards shall be checked for clearance of sidewalks and placed 1' from end of curb return.  
 3. See City of Riverside Drug No. 21-12011 for light standard details and Drug No. 21-13003 for pullbox details.  
 4. All cable to be AWG No. 8 Copper.  
 5. This is a 2 wire 240 volt multiple system.  
 6. All construction to comply with City of Riverside Street Light Specifications.  
 7. Inspections to be called for as outlined in specifications.  
 8. Feed point to be confirmed at time of construction.  
 9. \$ 75.00 Connection fee paid 5-5-65.  
 10. The City of Riverside Public Engineering Division will pay \$ 75.00 toward the cost of this project to the Developer upon completion of the work and receipt of a statement from the Developer.



TYPICAL SECTION ARLINGTON AVENUE  
 7.1.7

**GENERAL NOTES:**  
 1. It shall be the responsibility of the contractor to clear the right of way in accordance with the provisions of law as it affects each utility including irrigation lines and appurtenances and at no cost to the City.  
 2. Construction shall be in accordance with the City of Riverside, Department of Public Works, Specifications No. 281 and Standard Drawings.  
 3. Prime coat, seal coat, and paint binder are required.  
 4. Grading will require a permit under Ordinance 3093 for a cut or fill exceeding 100 cubic yards, or a fill over one foot in depth.  
 5. Firm edge of existing pavement, where new paving joins existing pavement, to a clean straight line. Construct match-up paving as shown and overlay as directed in the field to produce a smooth crown section.  
 6. Contact Public Utilities Engineering @ 787-7421 for Street Light Requirements prior to sidewalk construction.  
 7. The finished subgrade shall have a compaction of not less than 90% for a depth of as feet as determined by test method No. "California 216" immediately prior to placement of the cover.

Bench Mark:  
 P.K. nail in lead S.W. curb return @  
 Arlington Ave. & De Camp Ct. - Elev. 772.55

<b>CRAWLEY &amp; HAWKINS</b> SURVEYORS AND ENGINEERS Riverside, California Approved: <i>George O. Crawley</i> Field B-57-25 Date 1-20-65 Approved by: <i>Tom Campbell</i> 5-6-65 Date 5-6-65 70338	REVISIONS MARK REVISIONS DATE DESIGNED BY: DRAWN BY: CHECKED BY:	CITY OF RIVERSIDE, CALIFORNIA DEPARTMENT OF PUBLIC WORKS APPROVED BY: BY DATE OFFICE ENGINEER: PAME DEPARTMENT: 8-6-65 TRAFFIC DIVISION: 780-6465 ASSISTANT CITY ENG.: 160-511	<b>STREET PLAN &amp; PROFILE</b> <b>ARLINGTON AVENUE</b> NORTH SIDE 260 TO 370 WESTERLY OF STREETER AVE. R-132-634 HORIZ. SCALE: 1" = 40' VERT. SCALE: 1" = 4' PROJECT NO. 55-232 R-1010 L5-13104 SHEET 1 OF 1 FILE NO.
---	--	---	---