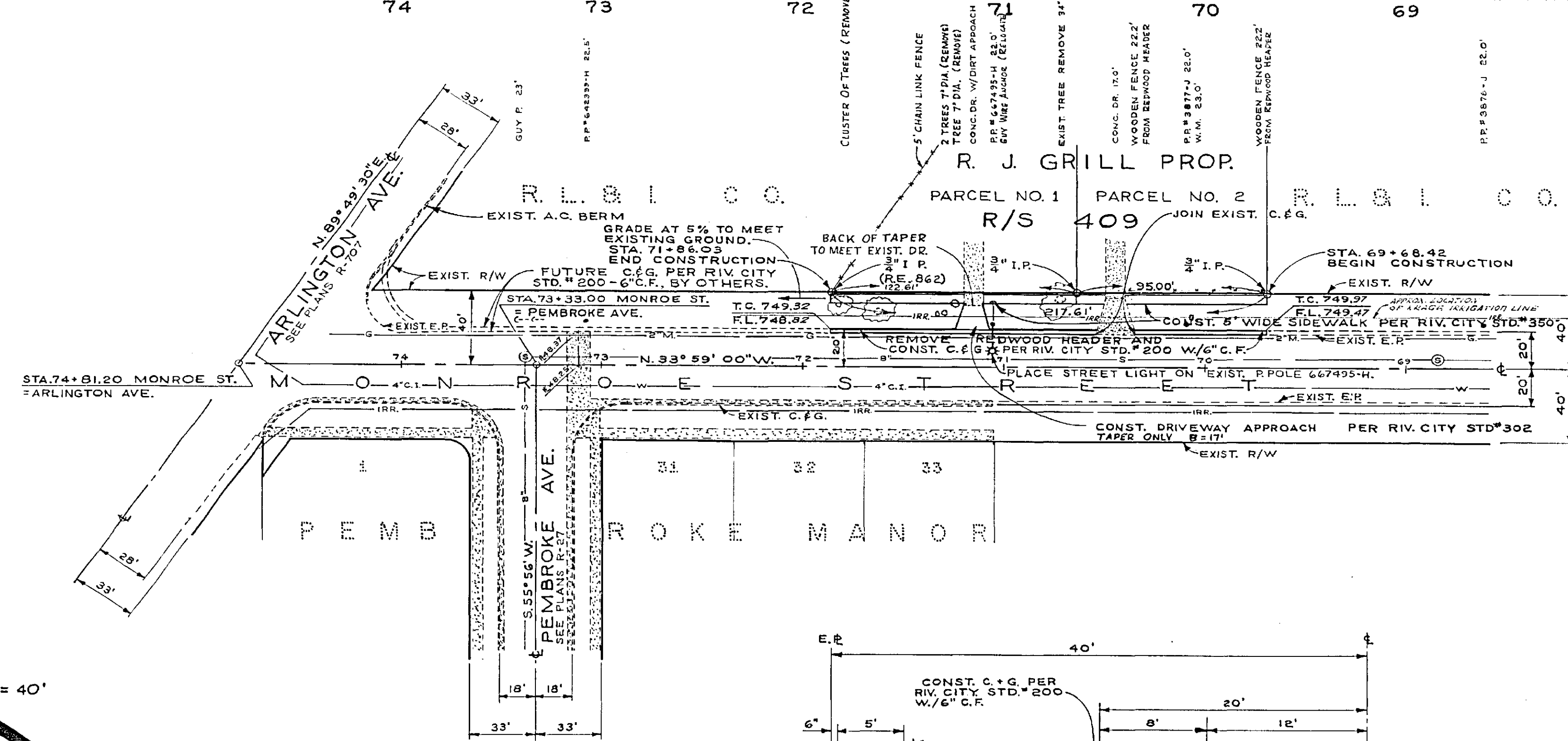
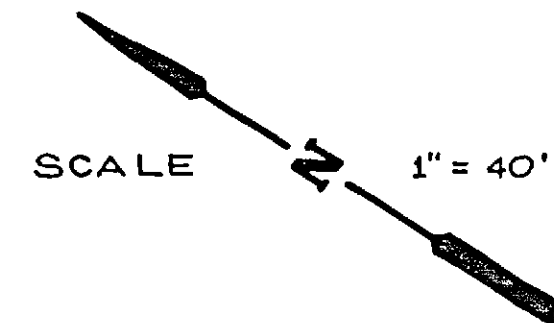


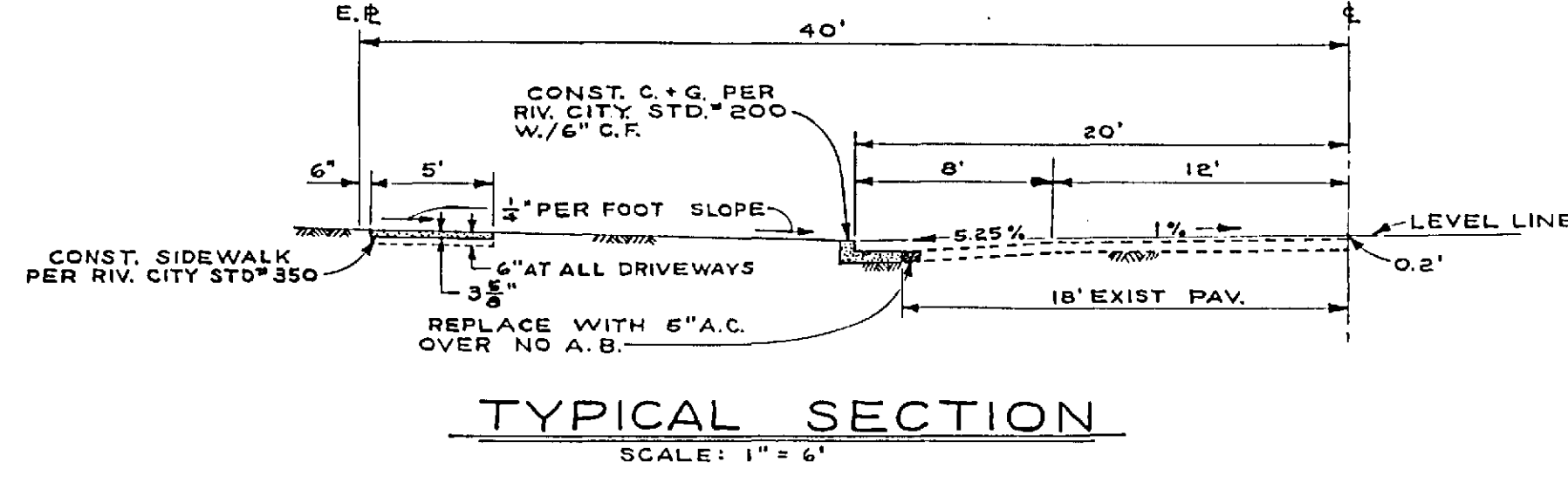
B.M. ELEV. 752.21'
 60' SPK. IN PPOLE #16-3871-J, 900' SOUTH
 OF ARL. AVE. ON MONROE ST.
 F.B. 611/3, 565/1, 620/32-33
 SCALE: HORIZ. 1" = 40'
 VERT. 1" = 4'



- QUANTITY ESTIMATE**
- 20' L.F. CURB AND GUTTER 6" C.F.
 - 333' S.F. SIDEWALK
 - 240' S.F. DRIVEWAY APPROACH
 - 6' TONS A.C.
 - 3 EA. TREE REMOVAL CLASS 1
 - 1 EA. TREE REMOVAL CLASS 2



- GENERAL NOTES:**
- 1) ALL GRADES, ELEVATIONS, B.M.S, STATIONS & DIMENSIONS PER CITY OF RIVERSIDE MONROE ST. PLAN, R-138, DATED 12/19/57.
 - 2) IT SHALL BE THE RESPONSIBILITY OF THE CONTRACTOR TO CLEAR THE RIGHT OF WAY IN ACCORDANCE WITH THE PROVISIONS OF LAW AS IT AFFECTS EACH UTILITY INCLUDING IRRIGATION LINES & APPURTENANCES AT NO COST TO THE CITY.
 - 3) CONSTRUCTION SHALL BE IN ACCORDANCE WITH THE CITY OF RIVERSIDE, DEPARTMENT OF PUBLIC WORKS, SPECIFICATIONS NO. 461 AND STANDARD DRAWINGS.
 - 4) PRIME COAT & PAINT BINDER ARE REQUIRED.
 - 5) GRADING WILL REQUIRE A PERMIT UNDER ORDINANCE 8093 FOR A CUT OR FILL EXCEEDING 100 CUBIC YARDS, OR A FILL OVER ONE FOOT IN DEPTH.
 - 6) TRIM EDGE OF EXISTING PAVEMENT, WHERE NEW PAVING JOINS EXISTING PAVEMENT, TO A CLEAN, STRAIGHT LINE. CONSTRUCT MATCH-UP PAVING AS SHOWN. COVERLAY PAVING AS DIRECTED IN THE FIELD TO PRODUCE A SMOOTH CROWN SECTION.



REVISIONS			CITY OF RIVERSIDE, CALIFORNIA DEPARTMENT OF PUBLIC WORKS
MARK	DATE	DESCRIPTION	
	7-14-65	COMPOSITE STREET WIDENING CONTRACT R/S 409 W/ 947	STREET IMPROVEMENTS R/S 409 MONROE ST. EAST SIDE 225'± TO 500'± SLY OF ARLINGTON AVE. PROJ. NO. S.S. 240
DESIGNED BY	7-14-65	THOMAS W. SOMMERS	
APPROVED BY	7-14-65	THOMAS W. SOMMERS	R-1014 SHEET 1 OF 1
DRAWN BY J.H.O.	7-14-65	THOMAS W. SOMMERS	
RECOMMENDED BY	7-6-65	THOMAS W. SOMMERS	COMPOSITE STREET WIDENING CONTRACT SHEET 10 OF 12
CHECKED BY	7-6-65	THOMAS W. SOMMERS	
DATE	7-6-65	THOMAS W. SOMMERS	