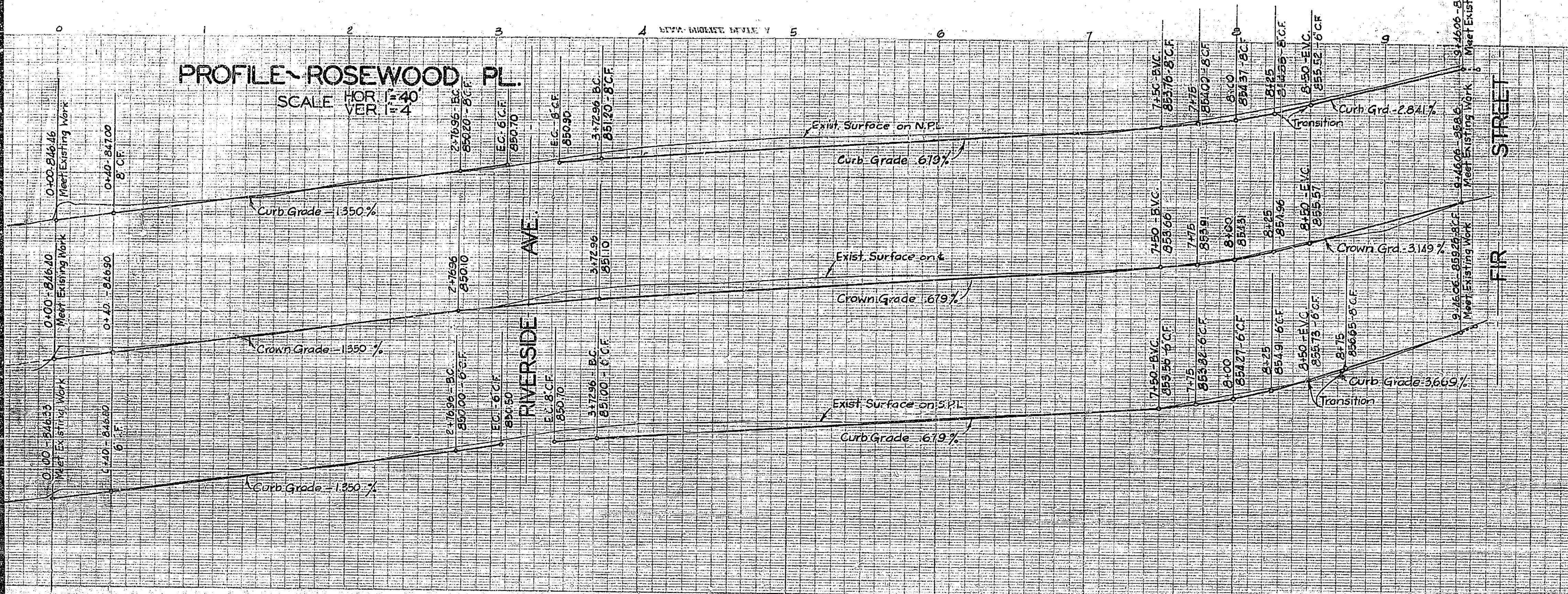


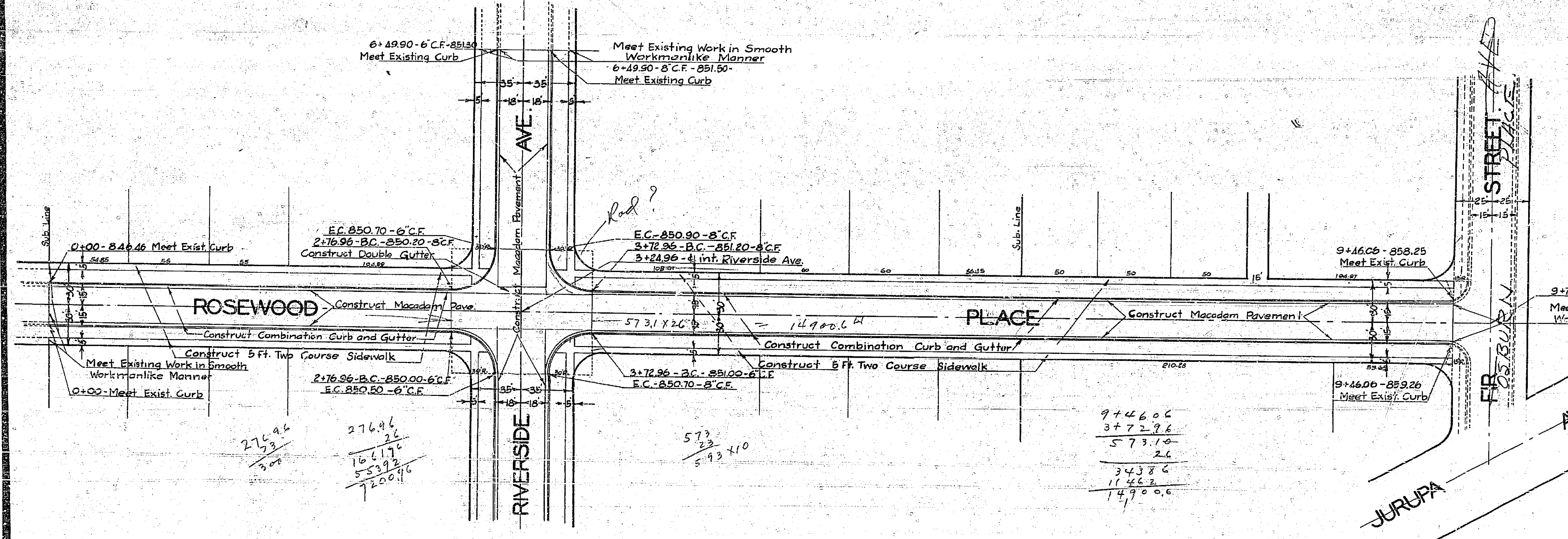
1040

Rosewood Place			
Drawing Number	Sheet Number	Total Sheets	Field Book
28 B	1	2	200
Drawn By	Checked	Approved	
Wenzelried			



PLANS AND PROFILES
OF THE PROPOSED IMPROVEMENT OF
RIVERSIDE AVE.
BETWEEN
JURUPA AVE AND LINWOOD PL.
AND
BRISCOE ST.
BETWEEN
RIVERSIDE AVE. AND MAGNOLIA AVE.
AND
ROSEWOOD PL.
BETWEEN
FIR ST. AND MAGNOLIA AVE.

ENGINEERING DEPT. CITY OF RIVERSIDE
DEC. 1938 APPROVED
CITY ENGINEER



276.96
33
276.96
16.6176
55392
7200.96

573
33
573 x 10

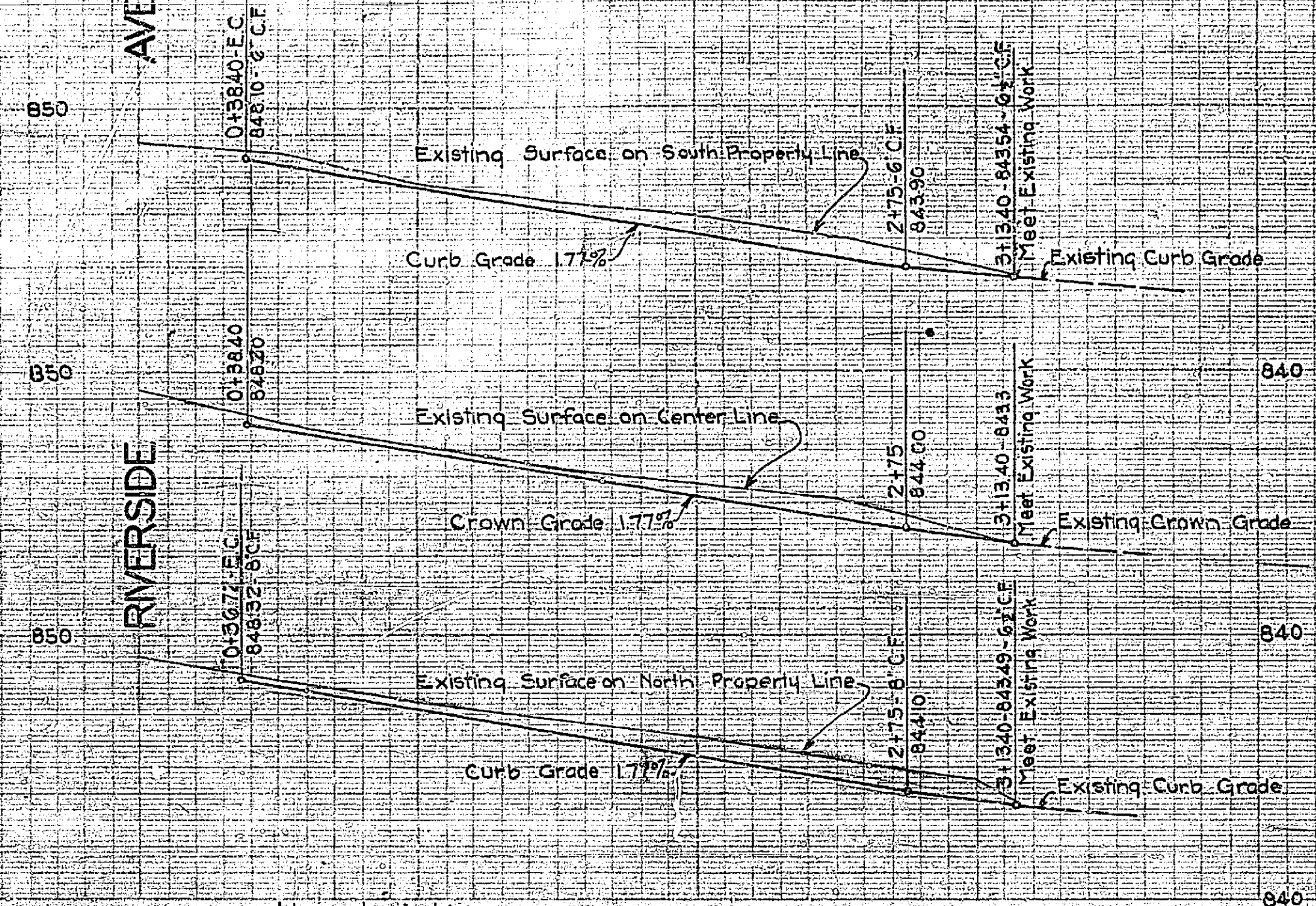
9+46.06
3+72.96
573.10
26
34386
11463
14900.6

1040

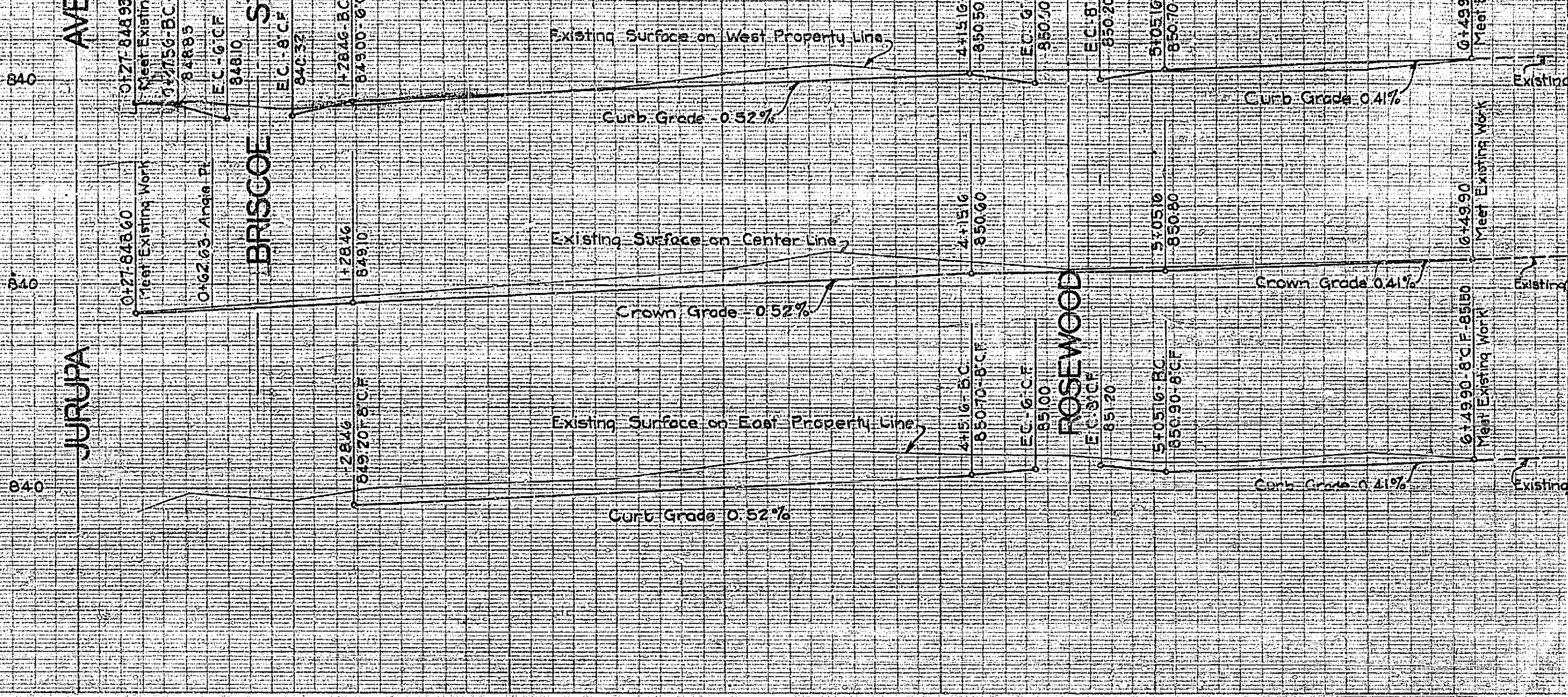
1040

Riverside Ave. and Briscoe St.			
Drawing Number	Sheet Number	Total Sheets	Rev.
28-B	2	2	36
Drawn By	Checked	Approved	
Wenzel			

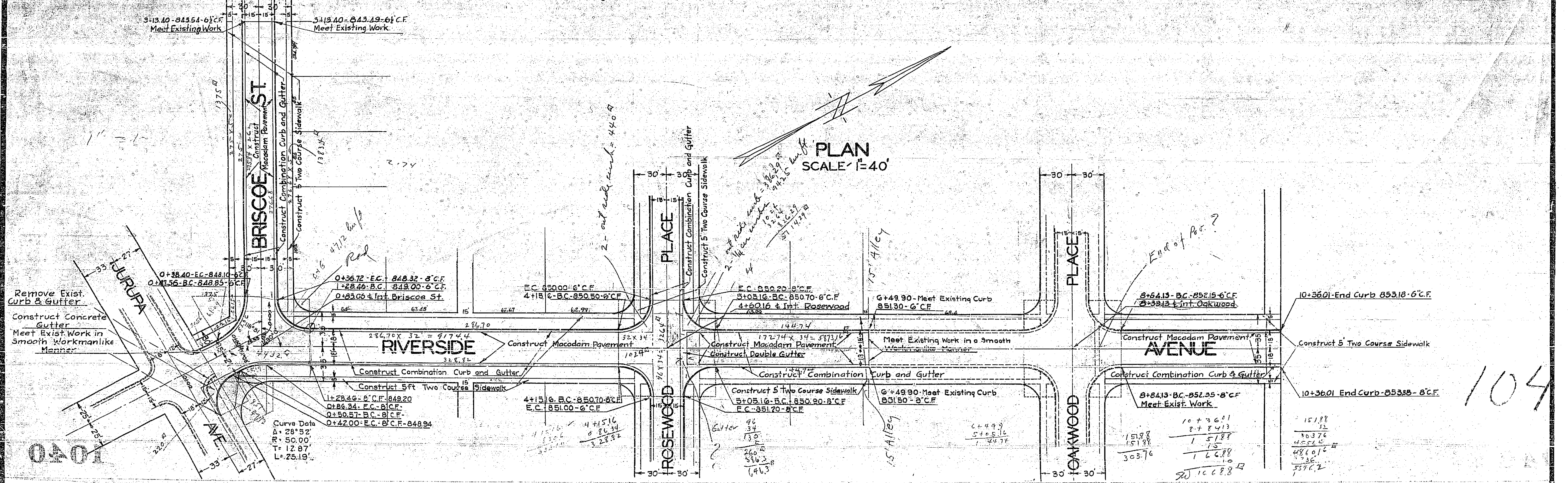
PROFILE - BRISCOE ST.
SCALE - 1" = 40' HOR.
1" = 4' VER.



PROFILE - RIVERSIDE AVE.
SCALE - 1" = 40' HOR.
1" = 4' VER.

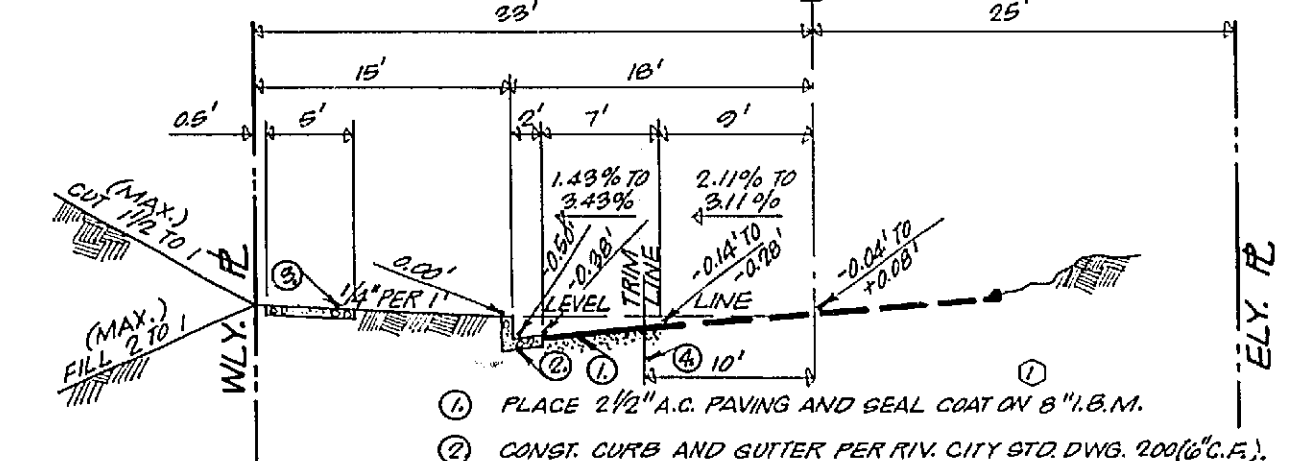
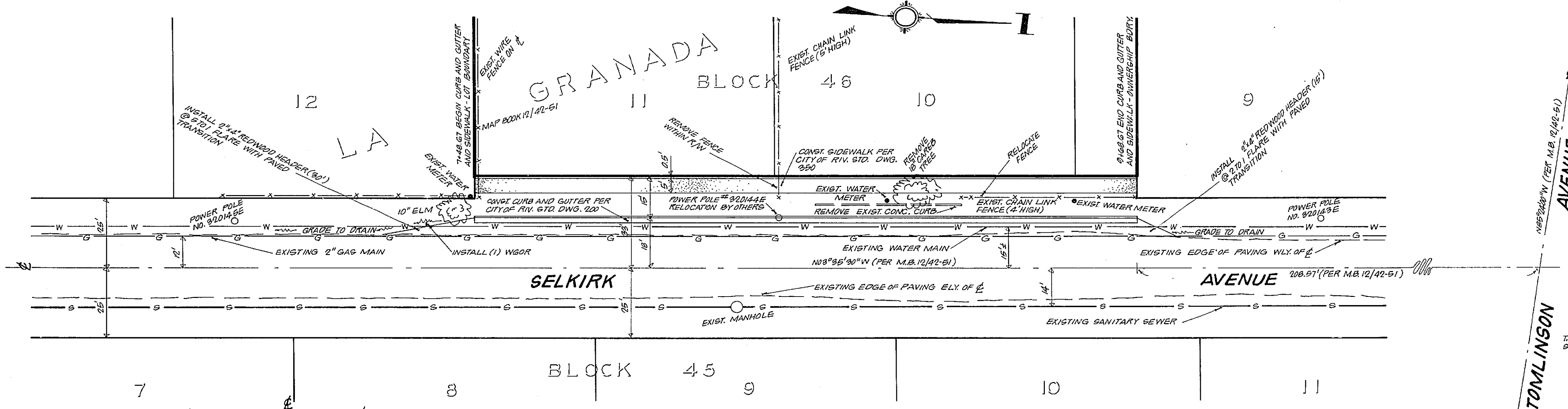
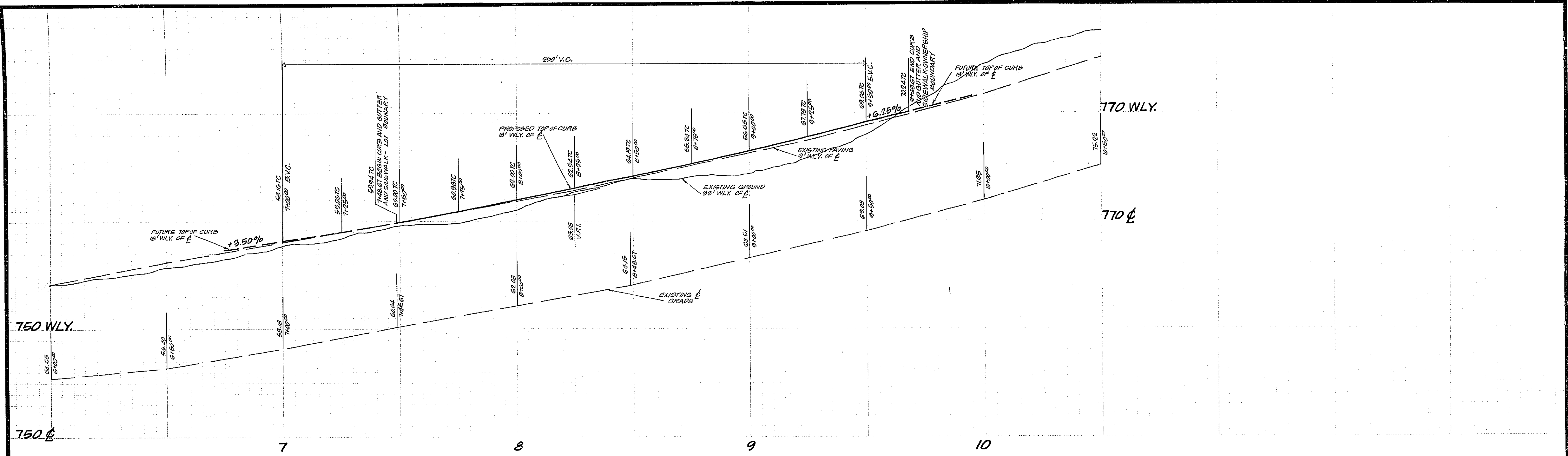


PLAN
SCALE - 1" = 40'



0401

104



- GENERAL NOTES**
- (1.) IT SHALL BE THE RESPONSIBILITY OF THE CONTRACTOR TO CLEAR THE RIGHT OF WAY IN ACCORDANCE WITH THE PROVISIONS OF LAW AS IT AFFECTS EACH UTILITY INCLUDING IRRIGATION LINES AND APPURTENANCES AND AT NO COST TO THE CITY.
 - (2.) CONSTRUCTION SHALL BE IN ACCORDANCE WITH THE CITY OF RIVERSIDE, DEPARTMENT OF PUBLIC WORKS, SPECIFICATION NO. 461 AND STANDARD DRAWINGS.
 - (3.) PRIME COAT, SEAL COAT AND PAINT BINDER ARE REQUIRED.
 - (4.) GRADING WILL REQUIRE A PERMIT UNDER ORDINANCE 3093 FOR A CUT OR FILL EXCEEDING 100 CUBIC YARDS, OR A FILL OVER ONE FOOT IN DEPTH.
 - (5.) TRIM EDGE OF EXISTING PAVEMENT, WHERE NEW PAVING JOINING EXISTING PAVEMENT, TO A CLEAN, STRAIGHT LINE. CONSTRUCT MATCH-UP PAVING AS SHOWN AND OVERLAY PAVING AS DIRECTED IN THE FIELD TO PRODUCE A SMOOTH CROWN SECTION.
 - (6.) DO NOT DESTROY SPIKE AND TING SET 9' WLY. OF E WHEN CUTTING PAVEMENT AT TRIM LINE.
 - (7.) DRIVEWAY APPROACHES TO BE LOCATED IN THE FIELD. CONVT. DRIVEWAY APPROACH PER RIV. CITY STD. DWG. 902.

- ① PLACE 2 1/2" A.C. PAVING AND SEAL COAT ON 9" I.B.M.
 - ② CONVT. CURB AND GUTTER PER RIV. CITY STD. DWG. 900 (C.F.).
 - ③ CONVT. CONC. SIDEWALK PER RIV. CITY STD. DWG. 950.
 - ④ SEE NOTE (6.) IN GENERAL NOTES.
- TYPICAL SECTION**
- SCALE: 1" = 6'
(1:1, 5:0)

BENCH MARK
I.B.M. 1 RAILROAD SPIKE IN POLE NO. 6946914 ON THE WESTERLY SIDE OF TYLER STREET AT SELKIRK AVE. ELEVATION... 794.64

J.F. DAVIDSON ASSOCIATES CIVIL ENGINEERS-SURVEYORS-PLANNERS RIVERSIDE, CALIFORNIA		CITY OF RIVERSIDE, CALIFORNIA DEPARTMENT OF PUBLIC WORKS		BUILDING PERMIT STREET PLAN AND PROFILE SELKIRK AVENUE ON WLY. SIDE 750' & NLY. TYLER AVE. INTER.		PROJECT NO. R-1040
APPROVED BY <i>Robert J. Best</i> DATE 4-7-63 R.E. NO. 136891		APPROVED BY <i>[Signature]</i> DIRECTOR OF PUBLIC WORKS		DATE <i>May 3 1965</i>		SHEET 1 OF 1 FILE NO. 2793
W.O. 401 FOR: J.BEST R.D. 854/61		DESIGNED BY <i>[Signature]</i> DRAWN BY <i>[Signature]</i> CHECKED BY <i>[Signature]</i>		REVISIONS: 1. REV. I.B.M. THICKNESS FROM 11" TO 9" DATE 4-7-63 2. REV. DATE 4-7-63		HORIZ. SCALE: 1" = 20' VERT. SCALE: 1" = 4'