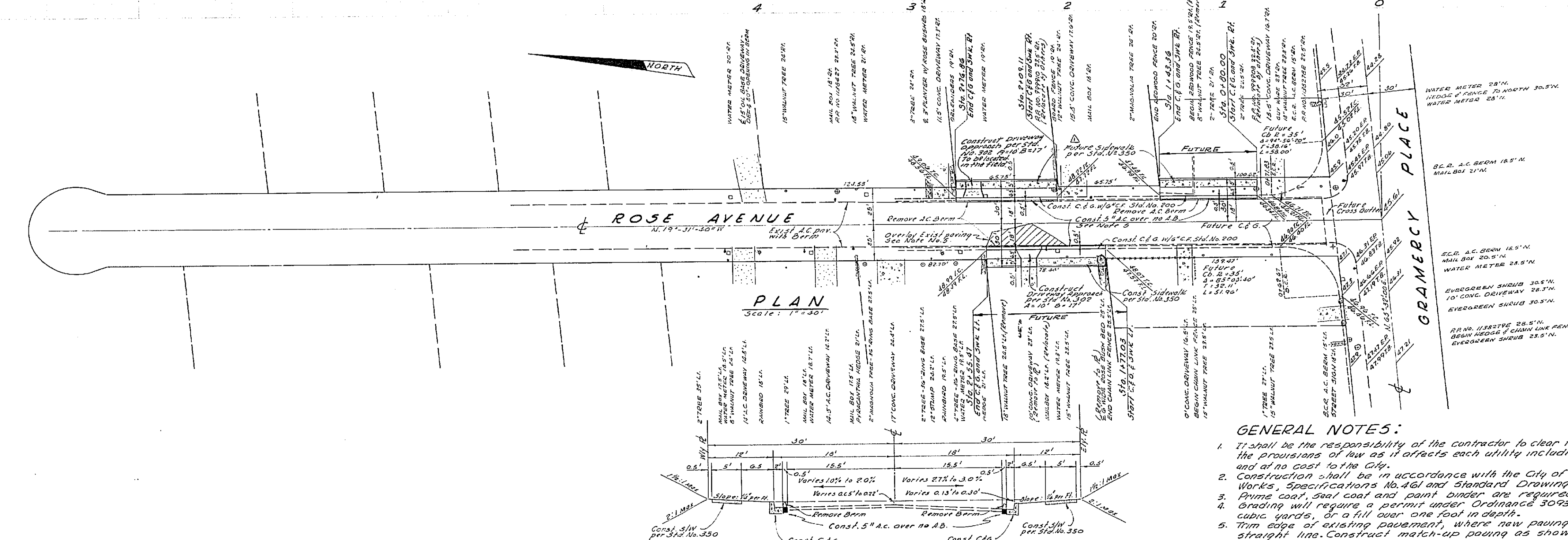
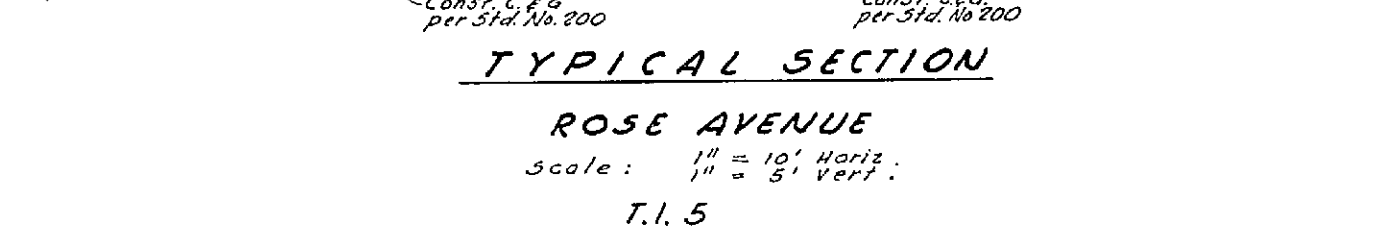


PROFILE
Scale: 1" = 4' Vert.



PLAN
Scale: 1" = 30'



TYPICAL SECTION
ROSE AVENUE
Scale: 1" = 10' Horiz.
1" = 5' Vert.

GENERAL NOTES:

1. It shall be the responsibility of the contractor to clear the right of way in accordance with the provisions of law as it affects each utility including irrigation lines and appearance and at no cost to the City.
2. Construction shall be in accordance with the City of Riverside, Department of Public Works, Specifications No. 461 and Standard Drawings.
3. Prime coat, seal coat and paint binder are required.
4. Grading will require a permit under Ordinance 3078 for a cut or fill exceeding 100 cubic yards, or a fill over one foot in depth.
5. Trim edge of existing pavement, where new paving joins existing pavement, to a clean straight line. Construct match-up paving as shown and overlay as directed in the field to produce a smooth crown section.
6. Contact Public Utilities Engineering - 787-7121 for Street Light Requirements prior to street-light construction.
7. The finished subgrade shall have a compaction of not less than 90% for a depth of 0.5 foot as determined by test method No. California 216 immediately prior to placement of the cover.

D.M. 11, 76, 77, 82, 30, 4, 10, 2, 8
R.E. Cor. Date and Gramercy Pl.
City 18, 702, 19, 22

CRAWLEY & HAWKINS SURVEYORS AND ENGINEERS Riverside, California Approved: <i>George O. Crawley</i> Date: 4-1-65 P.E. No. 9455	Change Const. to "Traffic" 300' width & C&G 10.10.379	CITY OF RIVERSIDE, CALIFORNIA DEPARTMENT OF PUBLIC WORKS APPROVED BY: <i>[Signature]</i> DATE: 11-27-64 OFFICE ENGINEER PARK DEPARTMENT TRAFFIC DIVISION ASSISTANT CITY ENG.	STREET PLAN & PROFILE ROSE AVENUE NORTH OF GRAMERCY PLACE STA. 0+80.00 RT. TO STA. 1+43.36 RT. STA. 2+09.11 RT. TO STA. 2+76.86 RT. STA. 1+77.03 LT. TO STA. 2+55.97 LT.	PROJECT NO. R-1041 SHEET 1 OF 1 FILE NO.
	DESIGNED BY: <i>[Signature]</i> DRAWN BY: <i>[Signature]</i> CHECKED BY: <i>[Signature]</i>	REVISIONS APPR. DATE	DATE: 5-17-65	HORIZ. SCALE: 1" = 40' VERT. SCALE: 1" = 4'

4070

4070