

SCALE :
 HORIZ 1" = 50'
 VERT 1" = 5'

BENCH MARK ELEV. 1017.14
 Chiseled X on Ely cor. of base of street
 light at exist. E.C.R. on Ely side of Fairview
 Ave. at Alessandro Blvd.
 WEBB FB 595/6

CURVE DATA

No.	Δ	R	T	L
(2)	90° 00' 00"	35'	35.00	54.98
(4)	43° 43' 30"	182'	73.03	138.89
(5)	43° 43' 30"	218'	87.47	166.37
(6)	25° 20' 35"	182'	40.92	80.50
(7)	29° 11' 33"	218'	56.77	111.07
(8)	100° 23' 20"	27'	35.42	47.32
(9)	83° 37' 48"	27'	24.07	39.35

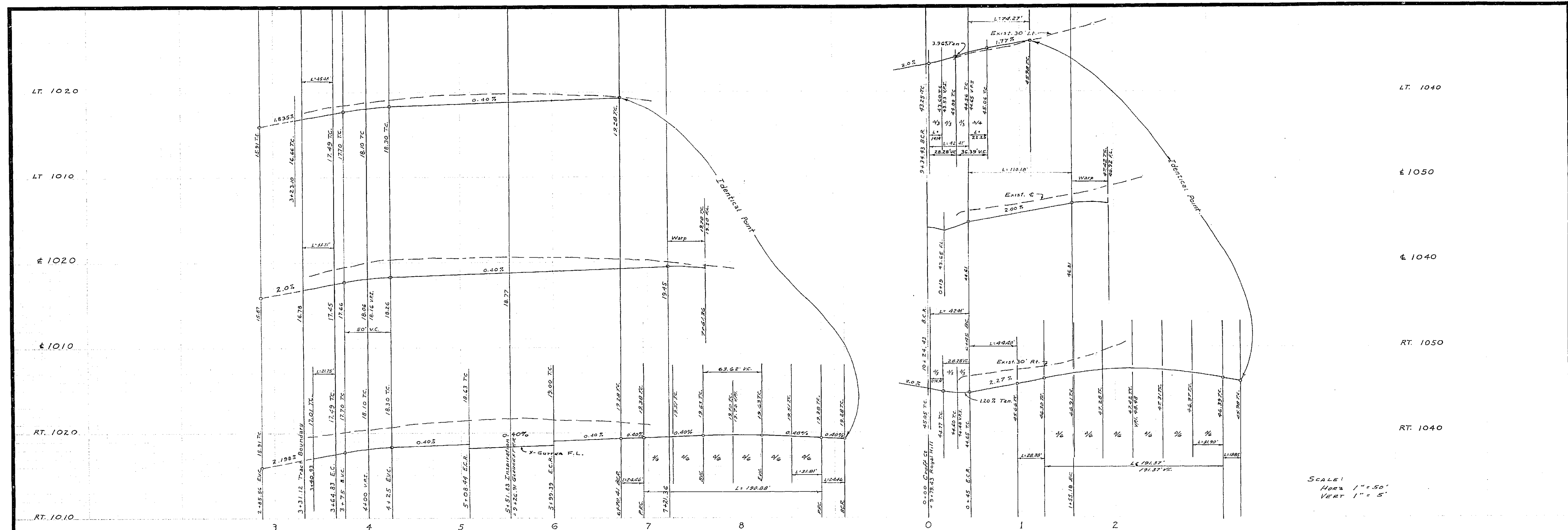
GLOUCESTER WAY
 Note: See S&L for Typical Section of Gloucester Way
 T.L. = 5

ALBERT A. WEBB ASSOCIATES
 CIVIL ENGINEERS
 RIVERSIDE, CALIFORNIA
 APPROVED BY: *[Signature]* DATE: 4/9/68
 R.E. No. 9876

CITY OF RIVERSIDE, CALIFORNIA
 DEPARTMENT OF PUBLIC WORKS
 APPROVED BY: *[Signature]* DATE: 5/14/68
 OFFICE ENGINEER: *[Signature]*
 PARK DEPARTMENT: *[Signature]*
 TRAFFIC DIVISION: *[Signature]*
 ASSISTANT CITY ENGR.: *[Signature]*

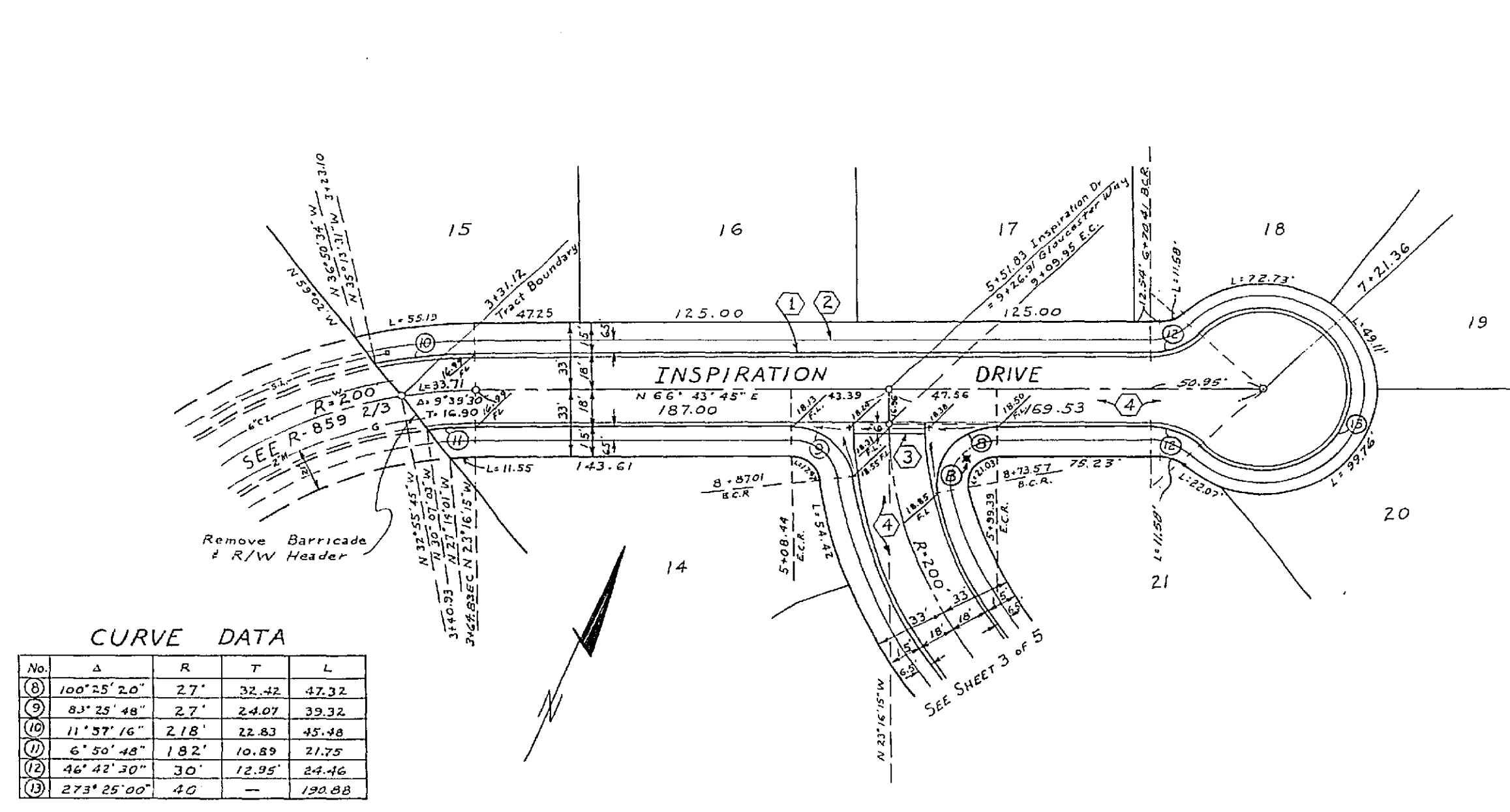
STREET PLAN & PROFILE
GLOUCESTER WAY
 TRACT No. 3737
 PROJECT No. R-1049
 SHEET 3 OF 5
 HORIZ. SCALE 1" = 50' VERT. SCALE 1" = 5'
 FILE NO. 67-412-A

DESIGNED BY: AW DRAWN BY: R.F.T. CHECKED BY: AW



SCALE:
 HORZ 1" = 50'
 VERT 1" = 5'

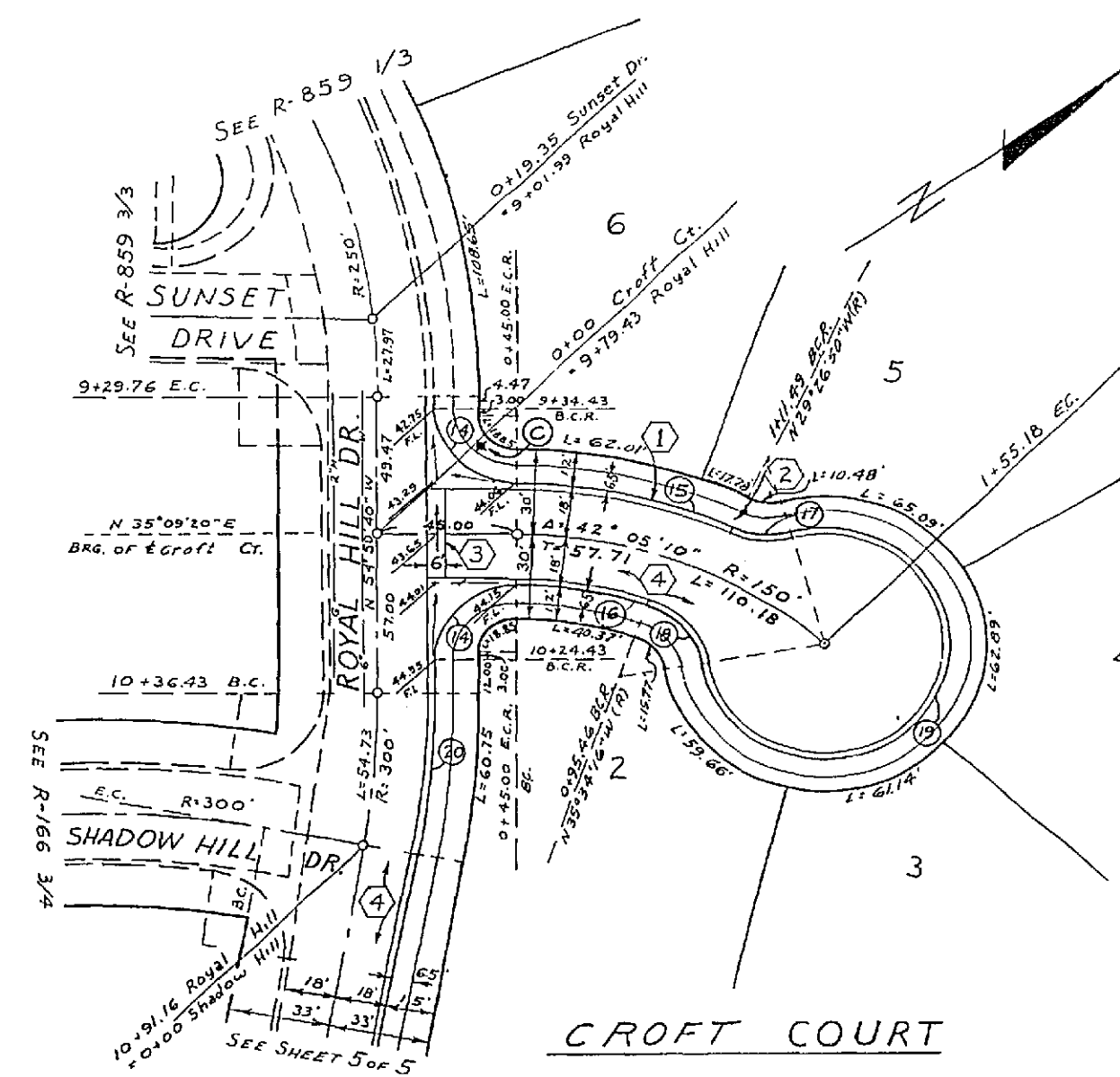
BENCH MARK ELEV. 1051.25
 Chiseled X on S.W. cor. of base of street
 light on North side of Shadow Hill Dr at
 Royal Hill Dr. WEBB FB 484/25



CURVE DATA

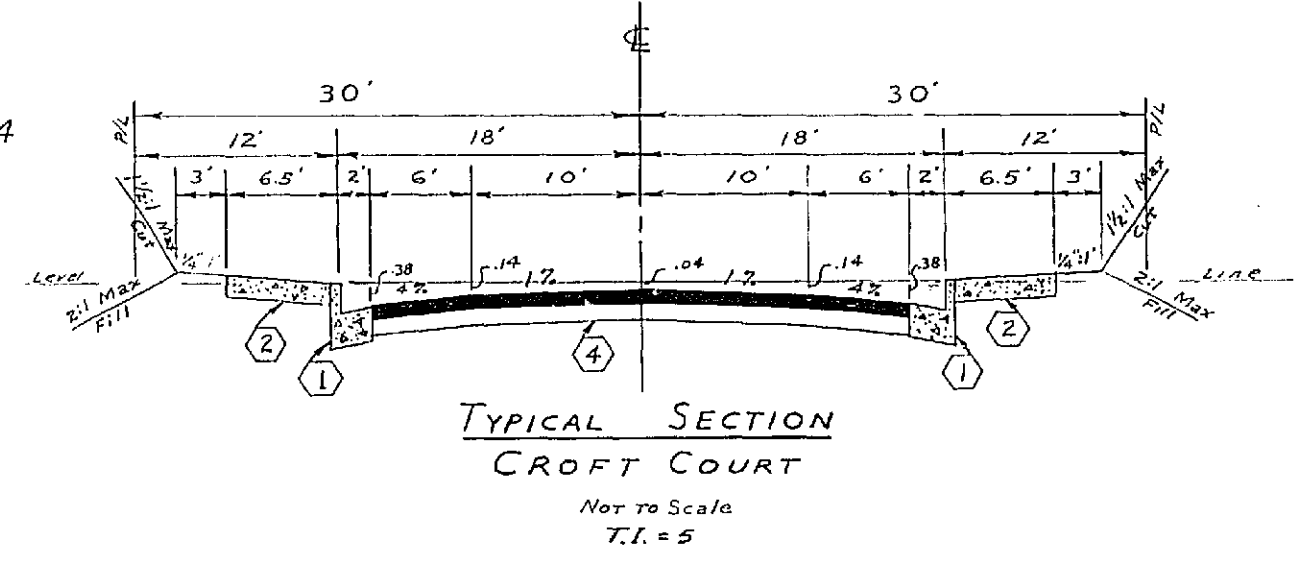
No.	Δ	R	T	L
(8)	100°25'20"	2.7'	32.32	47.32
(9)	83°25'48"	2.7'	24.07	39.32
(10)	11°37'16"	2.18'	22.83	45.98
(11)	6°50'48"	1.82'	10.89	21.29
(12)	46°42'20"	30'	12.95'	24.16
(13)	273°25'00"	40'	—	190.00

NOTE: See SHT 1 FOR TYPICAL SECTION OF INSPIRATION DR.

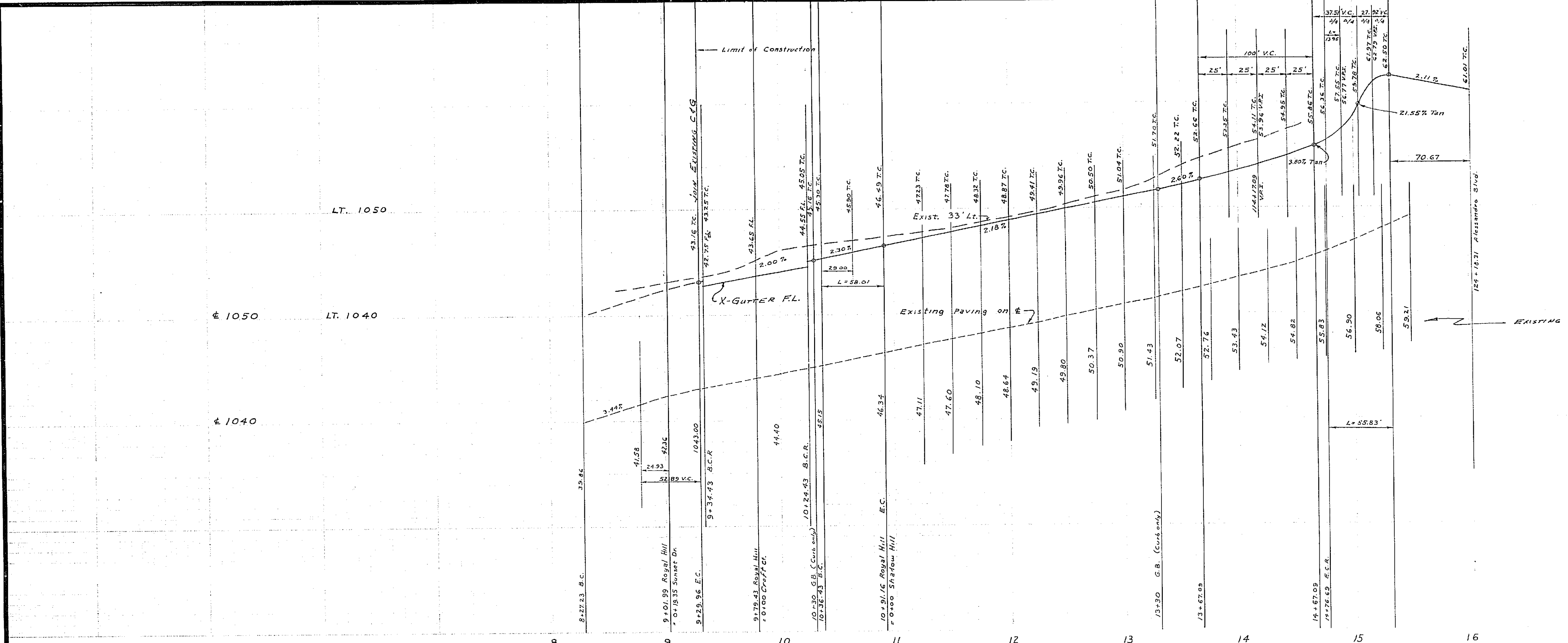


CURVE DATA

No.	Δ	R	T	L
(14)	90°00'00"	2.7'	27.00	42.41
(15)	25°12'20"	15.6'	27.25'	74.22'
(16)	19°16'24"	132'	22.91'	44.40'
(17)	40°00'36"	2.7'	9.81'	18.85'
(18)	60°18'49"	2.7'	15.66'	28.30'
(19)	27°06'28"	40'	—	191.22'
(20)	10°27'10"	318'	29.09'	58.01'



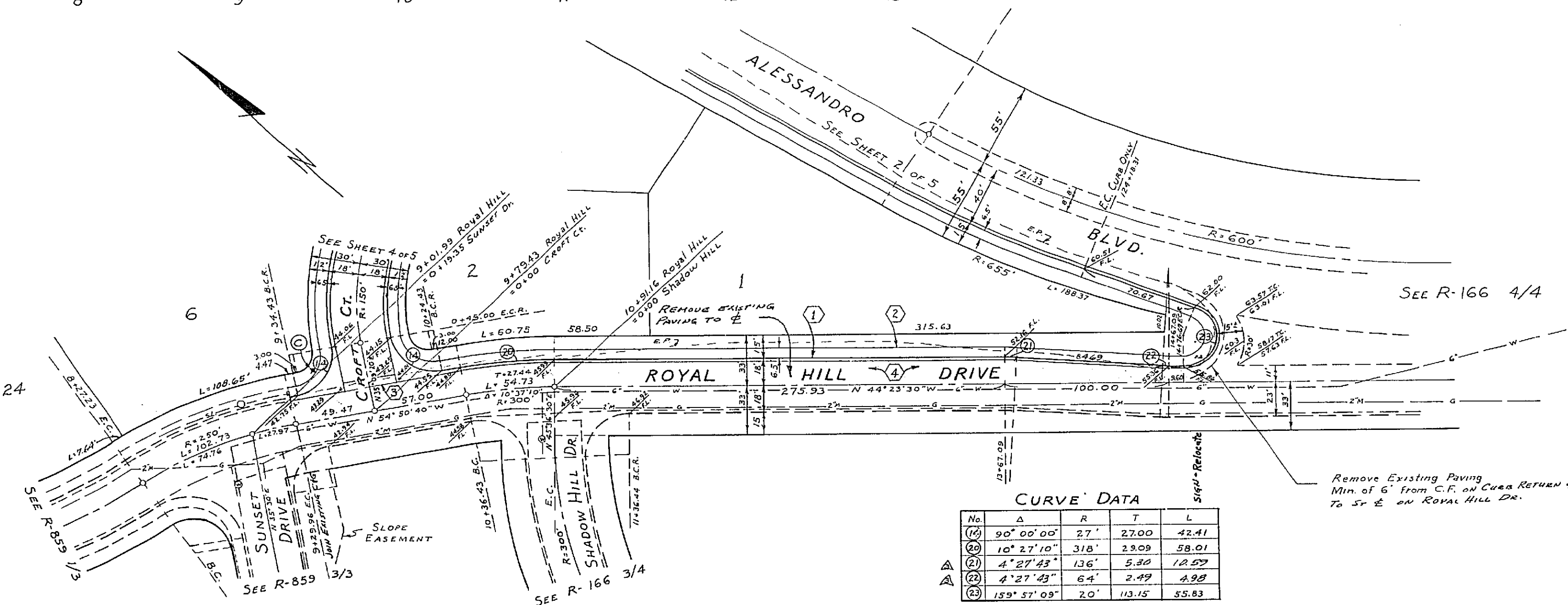
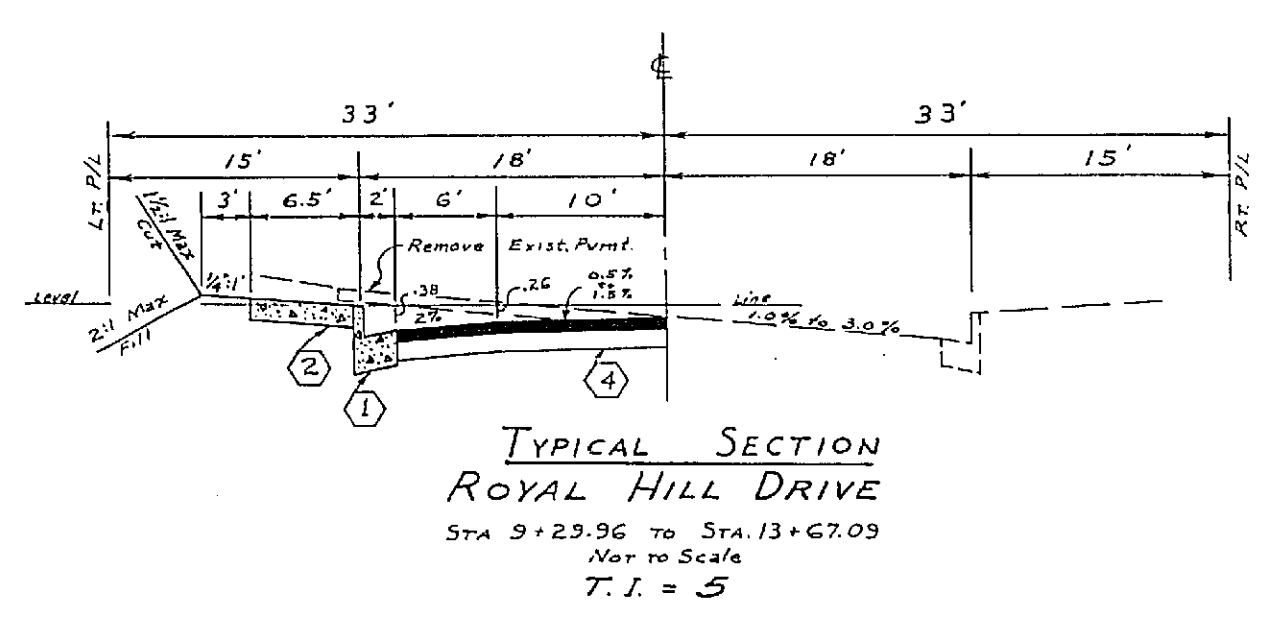
ALBERT A. WEBB ASSOCIATES CIVIL ENGINEERS RIVERSIDE, CALIFORNIA APPROVED BY: <i>[Signature]</i> DATE: 4/3/68 R.E. No. 2872 W.D. 64-410 FOR: FB. 595	DESIGNED BY: <i>[Signature]</i> DRAWN BY: <i>[Signature]</i> CHECKED BY: <i>[Signature]</i>	CITY OF RIVERSIDE, CALIFORNIA DEPARTMENT OF PUBLIC WORKS APPROVED BY: <i>[Signature]</i> DATE: 4-14-68 OFFICE ENGINEER TRAFFIC DIVISION ASSISTANT CITY ENGINEER	STREET PLAN & PROFILE INSPIRATION DRIVE CROFT COURT TRACT No. 3737 HORIZ. SCALE: 1" = 50' VERT. SCALE: 1" = 5'	PROJECT NO. R-1049 SHEET 4 OF 5 FILE NO. 67-412A
		GENERAL NOTES: See SHT 1 FOR TYPICAL SECTION OF INSPIRATION DR.		



LT. 1060
 LT. 1050 E 1060
 E 1050
 LT. 1040
 E 1040

SCALE:
 Horiz 1" = 50'
 Vert 1" = 5'

BENCH MARK Elev. 1051.25
 Chisled X on S.W. cor of base of street
 light on North side of Shadow Hill Dr at
 Royal Hill Dr. WEBB FB 484/25



CURVE DATA

No	Δ	R	T	L
(1)	90° 00' 00"	27'	27.00	42.41
(2)	10° 27' 10"	318'	2.909	58.01
(3)	4° 27' 43"	136'	5.80	12.579
(4)	4° 27' 43"	64'	2.99	4.98
(5)	159° 57' 09"	20'	13.15	55.83

ALBERT A. WEBB ASSOCIATES
 CIVIL ENGINEERS
 RIVERSIDE, CALIFORNIA
 APPROVED BY: *[Signature]* DATE 4/9/68
 R.E. No. 2876

DESIGNED BY: *[Signature]*
 DRAWN BY: *[Signature]*
 CHECKED BY: *[Signature]*

CITY OF RIVERSIDE, CALIFORNIA
 DEPARTMENT OF PUBLIC WORKS
 APPROVED BY: *[Signature]* DATE 5-14-68
 OFFICE ENGINEER
 PARK DEPARTMENT
 TRAFFIC DIVISION
 ASSISTANT CITY ENG.

STREET PLAN & PROFILE
 ROYAL HILL DRIVE
 TRACT No. 3737
 HORIZ. SCALE: 1" = 50'
 VERT. SCALE: 1" = 5'

PROJECT NO.
R-1049
 SHEET 5 OF 5
 FILE NO. 67-412-A