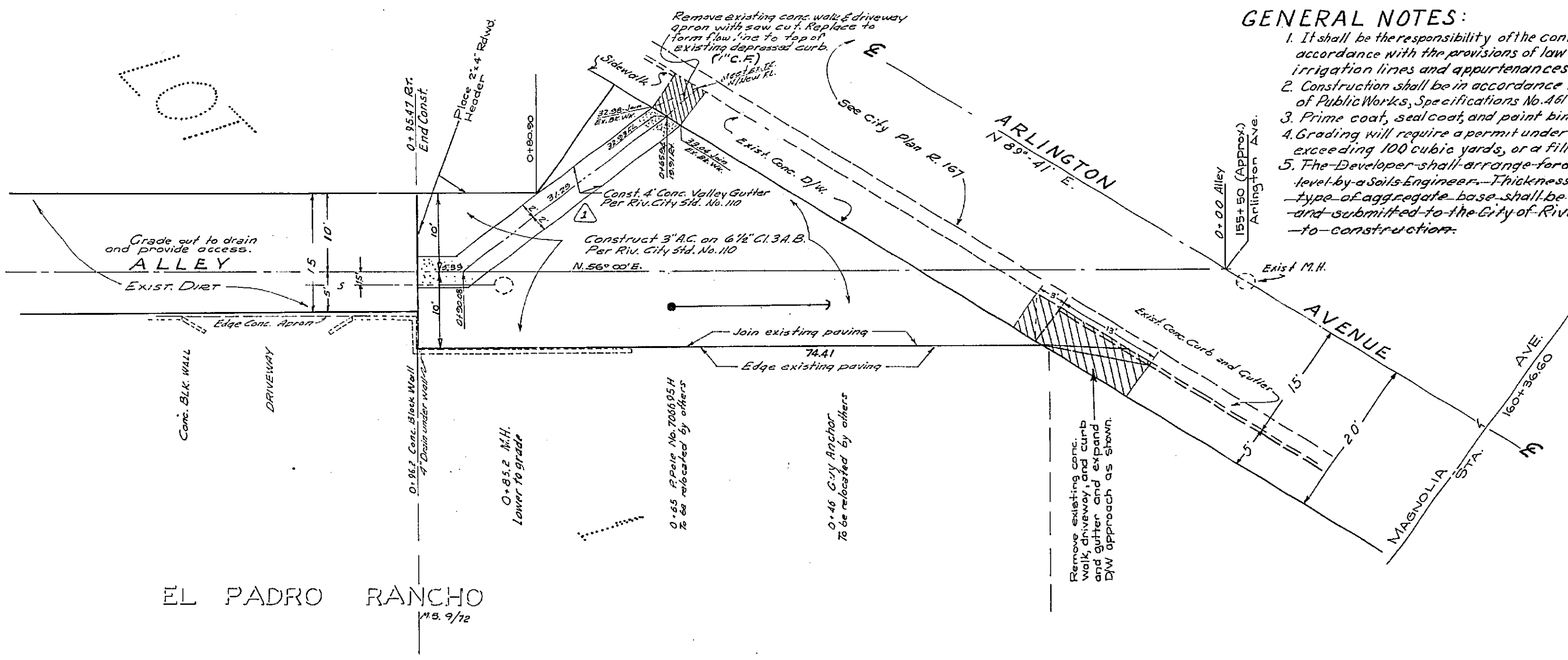


TYPICAL SECTION OF ALLEY
(Rev. City Ord. No. 110) Scale 1" = 5'
Sta. 0+95.47



- GENERAL NOTES:**
1. It shall be the responsibility of the contractor to clear the right-of-way in accordance with the provisions of law as it affects each utility including irrigation lines and appurtenances and at no cost to the City.
 2. Construction shall be in accordance with the City of Riverside, Department of Public Works, Specifications No. 41 and Standard Drawings.
 3. Prime coat, seal coat, and paint binder are required.
 4. Grading will require a permit under Ordinance 3093 for a cut or fill exceeding 100 cubic yards, or a fill over one foot in depth.
 5. The Developer shall arrange for a test of the soil at the subgrade level by a Soils Engineer. Thickness of pavement and thickness and type of aggregate base shall be determined by the Soils Engineer and submitted to the City of Riverside for approval prior to construction.

RE SUB EL PADRO RANCHO

J. F. DAVIDSON ASSOCIATES
CIVIL ENGINEERS - SURVEYORS - PLANNERS
RIVERSIDE, CALIFORNIA

APPROVED: PUBLIC UTILITIES ENGR
By: Don Campbell, 6-10-65
Gen. Supt. & Chief Engr.

APPROVED BY: Robert P. ... DATE: 6-22-65
R.E. No. 13866
W.O. 402 FOR: DON O'NEILL F.B. 668-66

CITY OF RIVERSIDE, CALIFORNIA
DEPARTMENT OF PUBLIC WORKS

APPROVED BY: BY DATE: APPROVED BY: APPROVED BY:
OFFICE ENGINEER PARK DEPARTMENT
TRAFFIC DIVISION
ASSISTANT CITY ENGR.

PLAN AND PROFILE
ALLEY
SOUTH OF ARLINGTON AVENUE
340' WEST OF MAGNOLIA AVENUE
ZONING CASE R-81-645

PROJECT NO.
R-1050
SHEET 1 OF 1
FILE NO. 2797

HORIZ. SCALE: 1" = 10' VERT. SCALE: 1" = 5'

DATE: 6-22-65