

VOID

GENERAL NOTES

1. It shall be the responsibility of the contractor to clear the right of way in accordance with the provisions of law as it affects each utility including irrigation lines and appurtenances and at no cost to the City.
2. Construction shall be in accordance with the City of Riverside, Department of Public Works, Specifications No. 461 and Standard Drawings.
3. Prime coat, seal coat, and paint binder are required.
4. Grading will require a permit under Ordinance 3093 for a cut or fill exceeding 100 cubic yards, or a fill over one foot in depth.
5. The developer shall arrange for a test of the soil at the subgrade level by a soils engineer. Thickness of pavement and type of aggregate base shall be determined by the soils engineer and submitted to the City of Riverside for approval.
6. The developer shall furnish and install street name signs and posts as per City Standard Drawing No. 66Z.
7. Trim edge of existing pavement, where new paving joins existing pavement, to a clean, straight line. Construct match-up paving as shown and overlay paving as directed in the field to produce a smooth crown section.
8. Contractor shall call "Traffic Division" for black numbers assignments before ordering signs.
9. Driveways to be located in the field and constructed per City Std. No. 302.

STREET NAME SIGN SCHEDULE

Letter	Street Name
A	COCHRAN AVENUE FURLONG STREET
B	FURLONG STREET ZINZER STREET
C	FURLONG STREET KLOIBER STREET
D	ZINZER STREET BURGE STREET
E	SKROSTAD STREET KLOIBER STREET

BENCH MARK EL. 703.93
Riverside County B.M. No. 7 chiseled "x" on S.E. corner of bottom concrete slab of main entrance to church on N.W. corner of Hole Ave. and Jones Street.

CITY OF RIVERSIDE, CALIFORNIA
DEPARTMENT OF PUBLIC WORKS

APPROVED BY: [Signature] DATE: 10-7-65
BY: [Signature] DATE: 9-23-65
TRAFFIC DIVISION: [Signature] DATE: 9-21-65
ASSISTANT CITY ENG. [Signature] DATE: 9-23-65

TECHNOLOGICAL ENGINEERING CORPORATION
PICO RIVERA, CALIFORNIA RE. 7830
APPROVED BY: [Signature] DATE: 2-18-65.

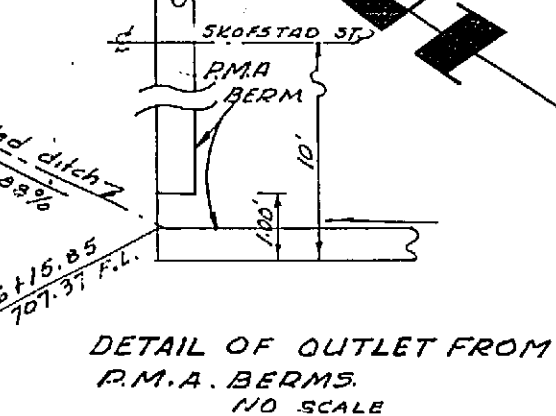
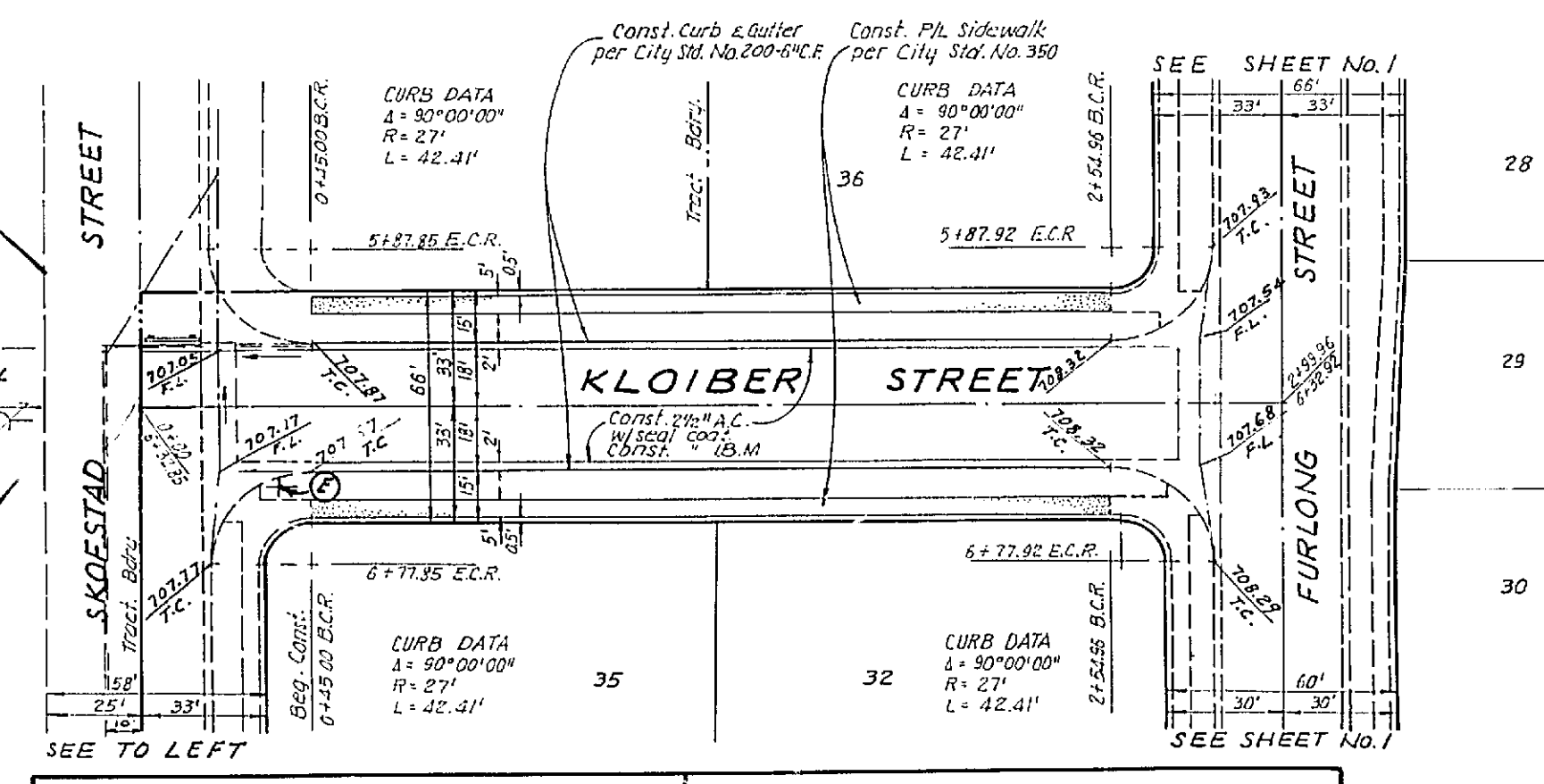
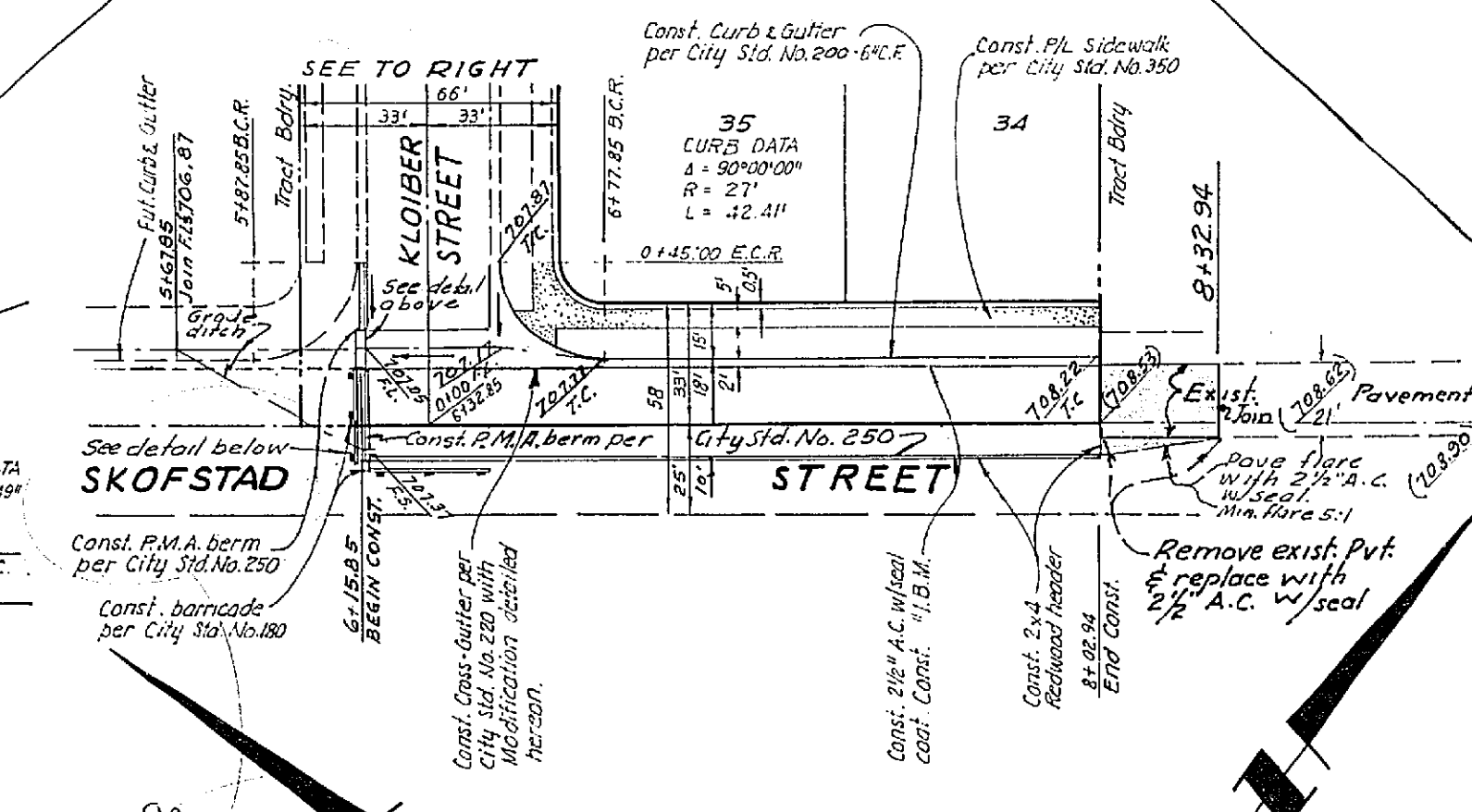
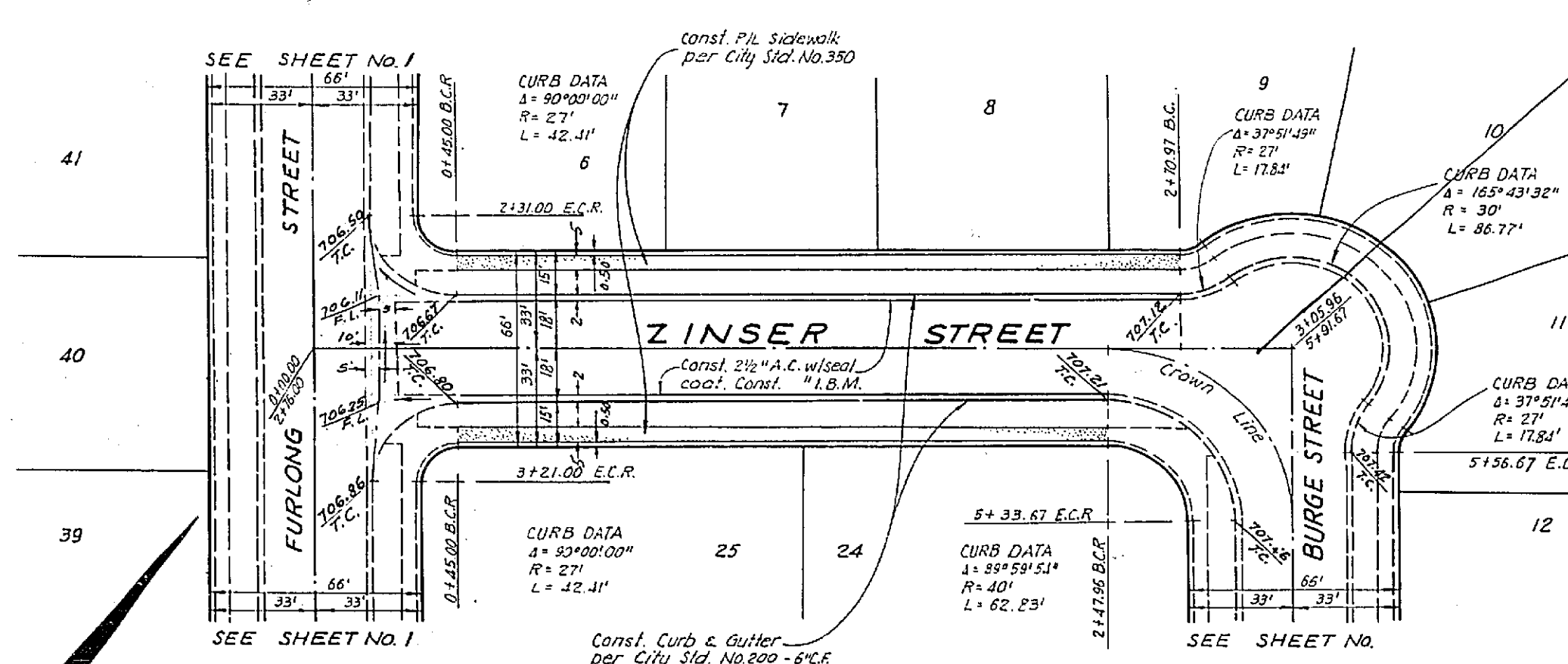
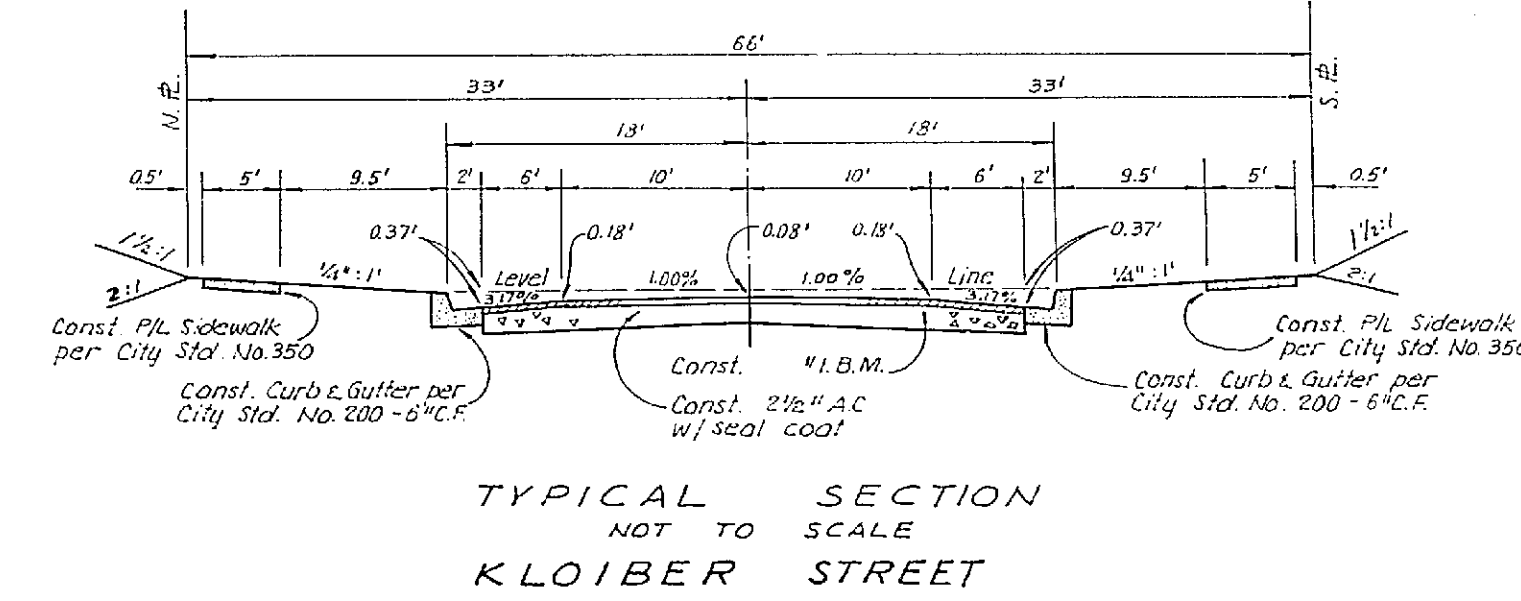
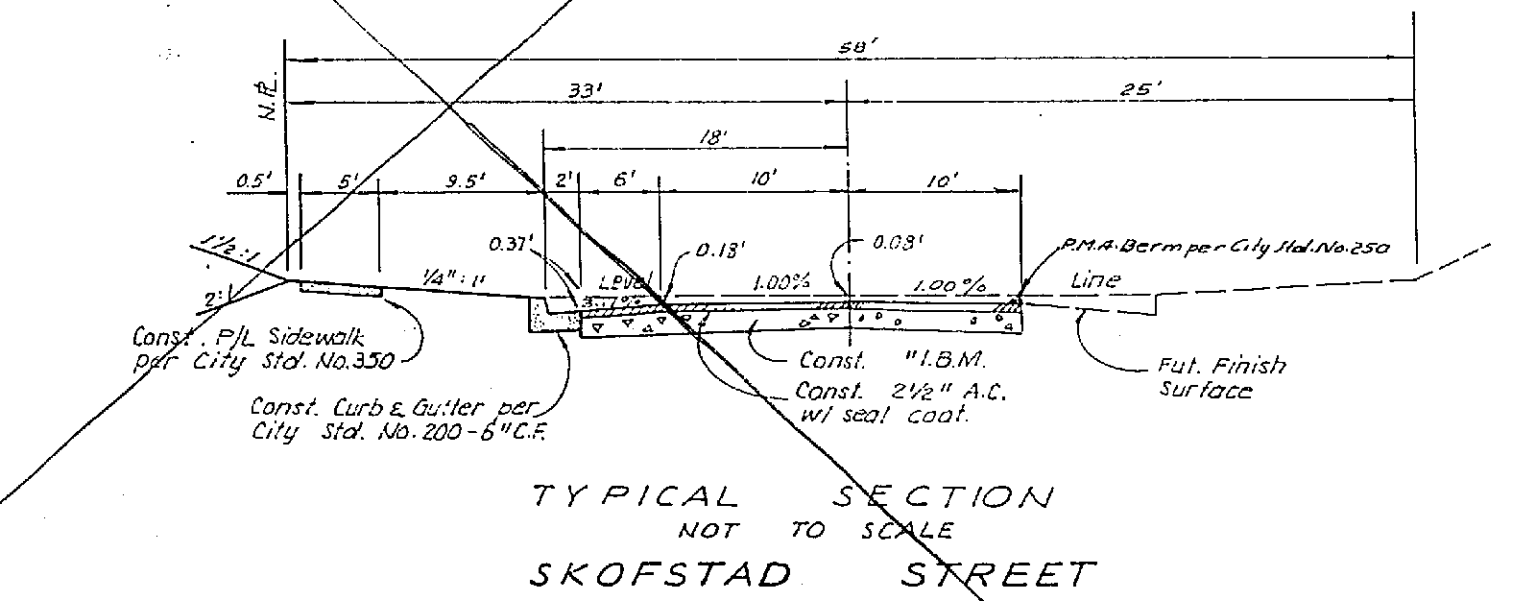
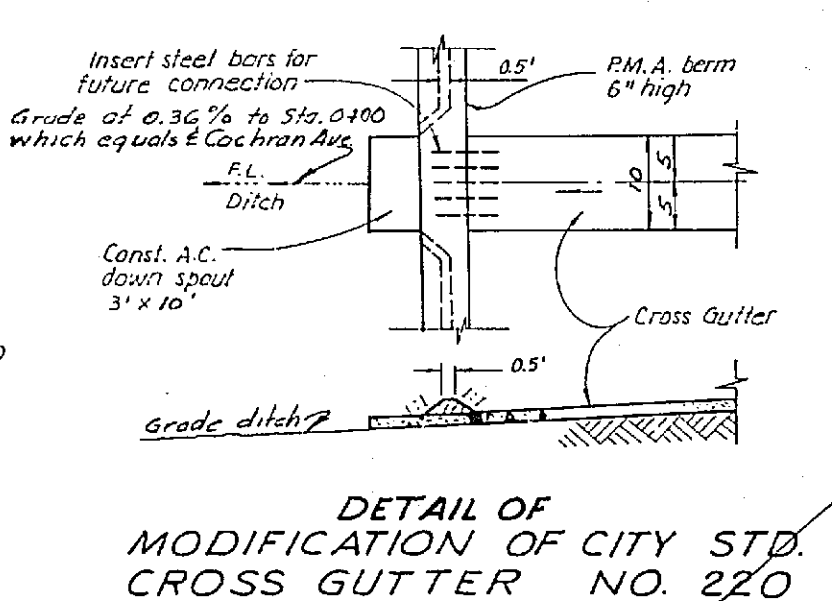
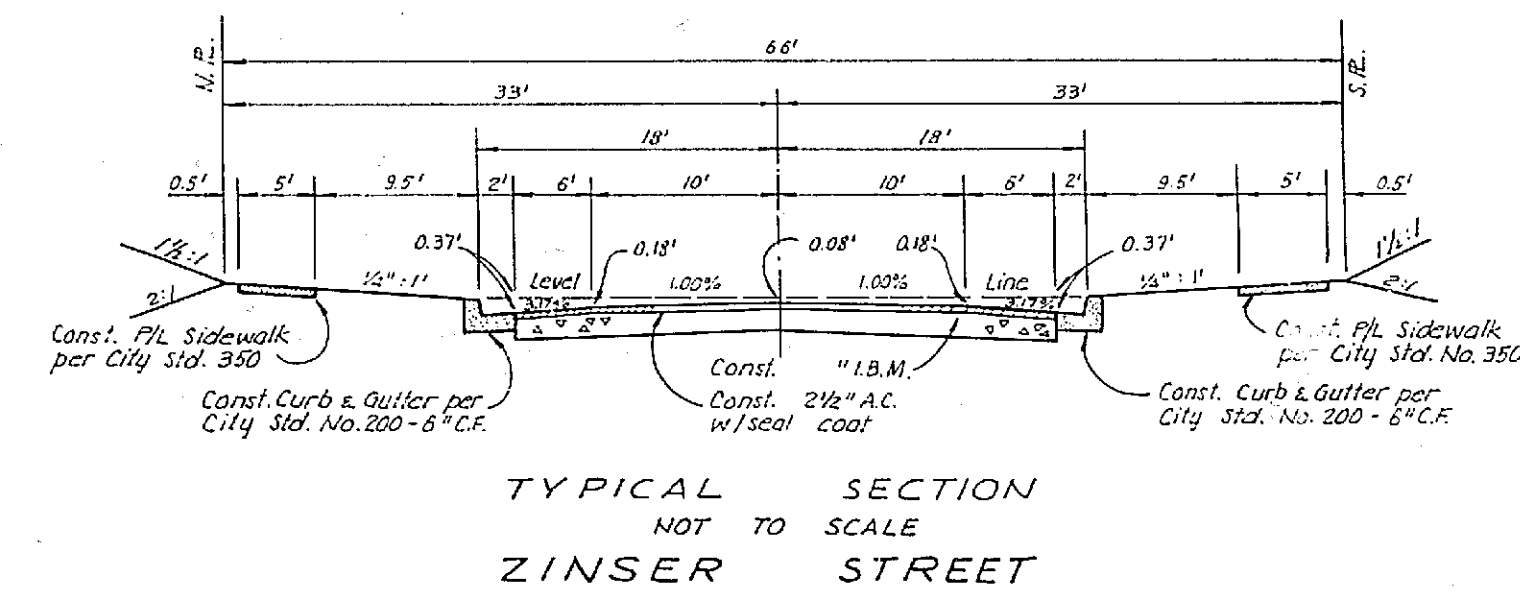
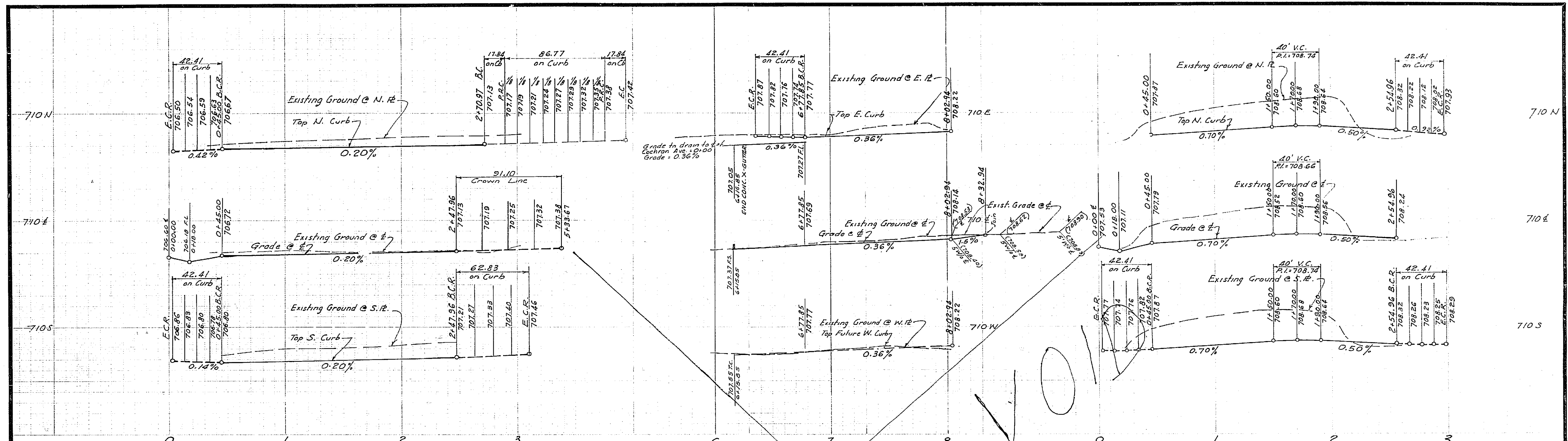
STREET IMPROVEMENT
TRACT No 3331
FURLONG STREET
COCHRAN AVE TO 8+02.91

PROJECT NO. **R-1070**

SHEET **1** OF **3**

HORIZ. SCALE: 1" = 40' VERT. SCALE: 1" = 4'

MARK	REVISIONS	APPR. DATE	CHECKED BY



BENCH MARK EL. 703.93 Riverside County B.M. No. 7 chiseled "W" on SE corner of barium concrete steps at main entrance to church on NW corner of Hale Avenue and Jones Street.		TECHNOLOGICAL ENGINEERING CORPORATION PICO RIVERA, CALIFORNIA RE. 7830 APPROVED BY: <i>[Signature]</i> DATE 7-17-65	
CITY OF RIVERSIDE, CALIFORNIA DEPARTMENT OF PUBLIC WORKS		STREET IMPROVEMENT TRACT NO. 3331 ZINSER STREET FURLONG ST. TO BURGE ST. SKOFSTAD STREET KLOIBER ST. TO FURLONG ST. SKOFSTAD ST. TO FURLONG ST.	
APPROVED BY: <i>[Signature]</i> OFFICE ENGINEER	BY: <i>[Signature]</i> DATE: 7-22-65 PARK DEPARTMENT	APPROVED BY: <i>[Signature]</i> DIRECTOR OF PUBLIC WORKS	PROJECT NO. R-1070 SHEET 3 OF 3 FILE NO.
DESIGNED BY: <i>[Signature]</i> DRAWN BY: <i>[Signature]</i> CHECKED BY: <i>[Signature]</i>	DATE: 10-7-65	HORIZ. SCALE: 1" = 40' VERT. SCALE: 1" = 4'	