

6-13-61	Check and approved by City Engineer	APPROVAL
6-13-61	Check and approved by City Engineer	APPROVAL
6-13-61	Check and approved by City Engineer	APPROVAL
6-13-61	Check and approved by City Engineer	APPROVAL

J. F. DAVIDSON - CIVIL ENGINEER
 R.E. NO. 882
 RIVERSIDE, CALIFORNIA

APPROVED BY: *[Signature]*

CITY OF RIVERSIDE, CALIFORNIA
DEPARTMENT OF PUBLIC WORKS

STREET PLAN & PROFILE
SAN ANDREAS AVE
BRAEMAR PLACE

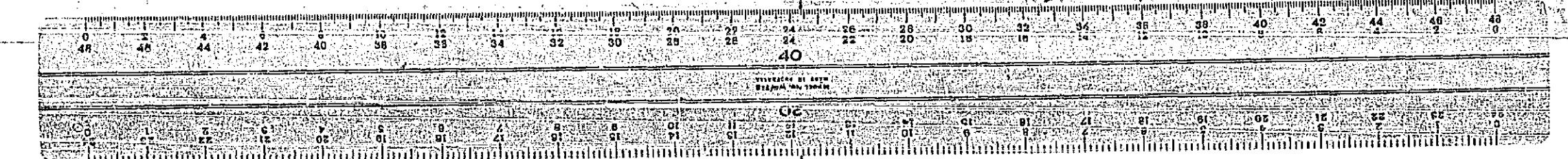
BRAEMAR TERRACE

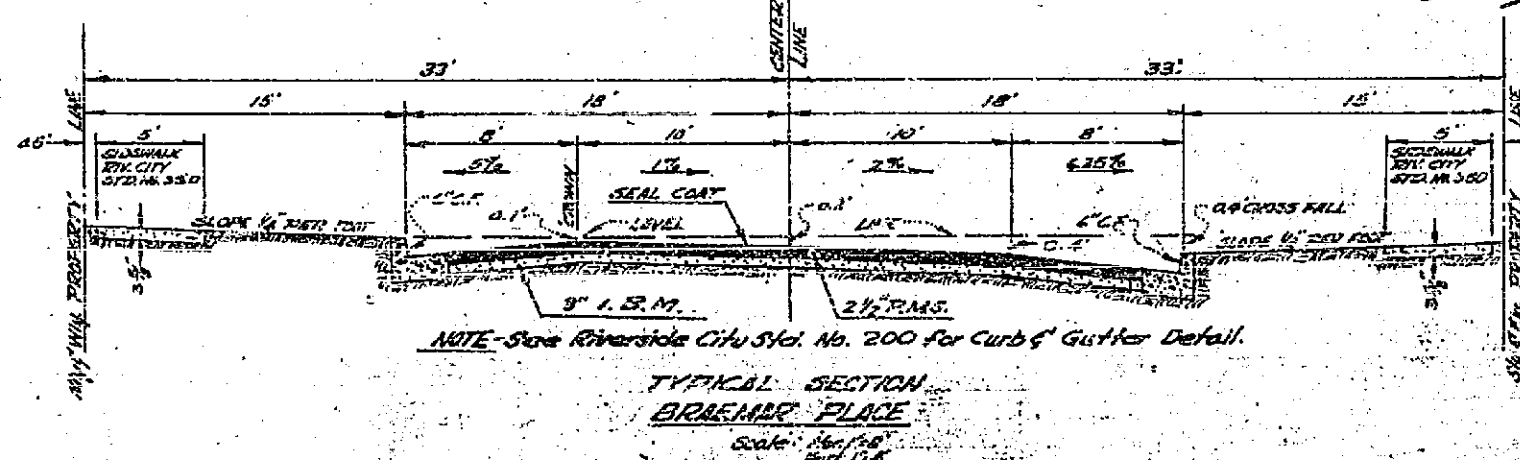
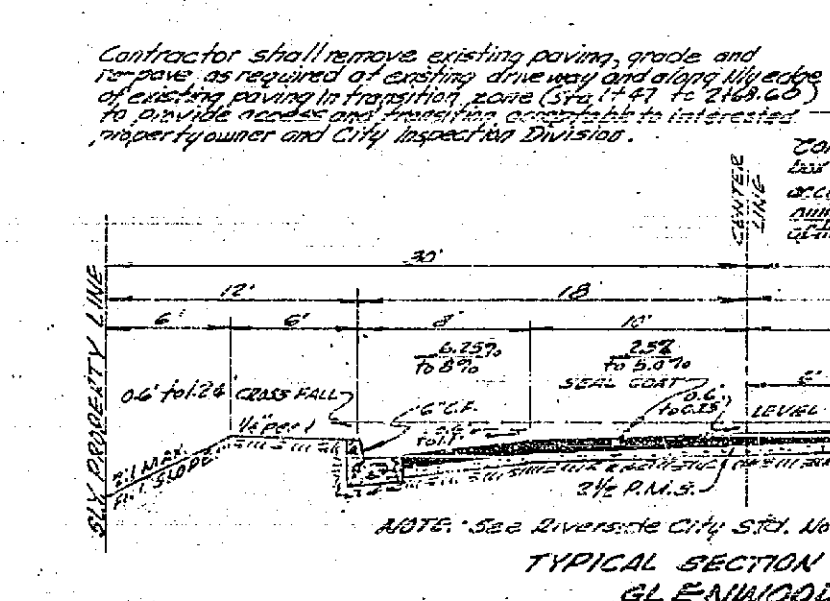
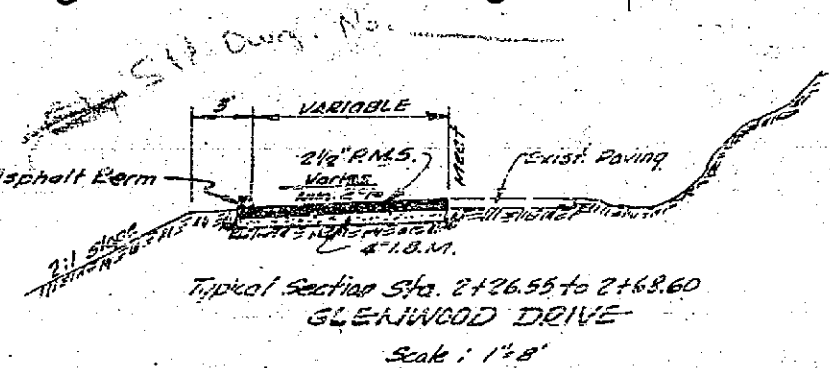
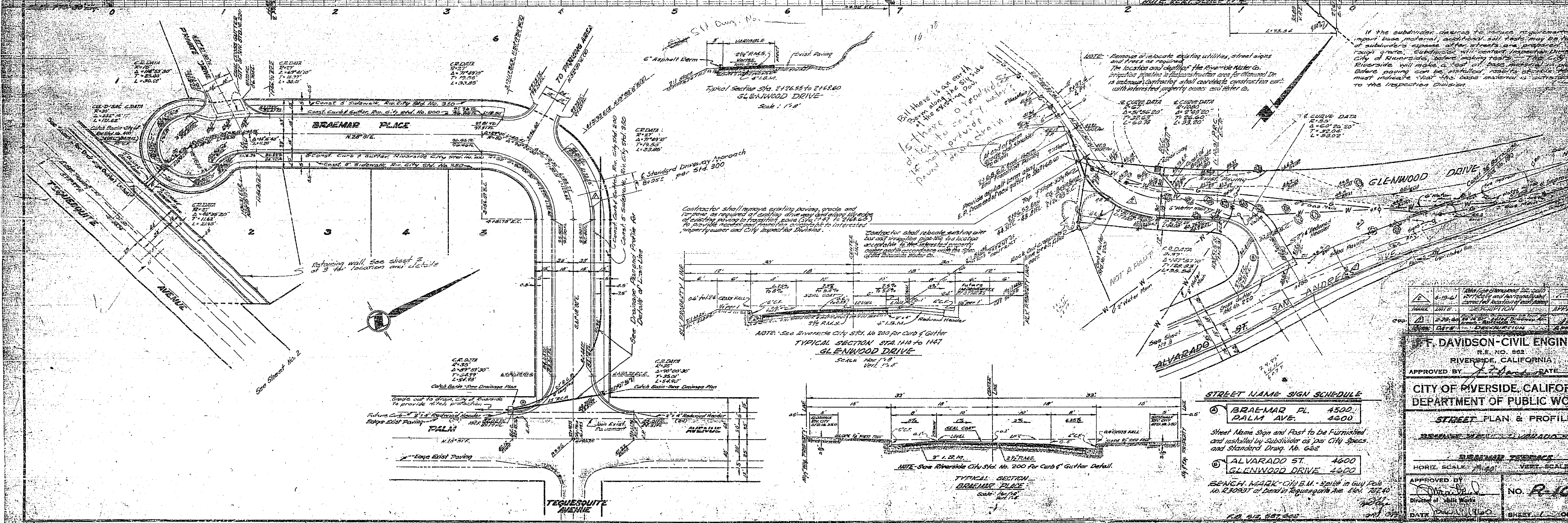
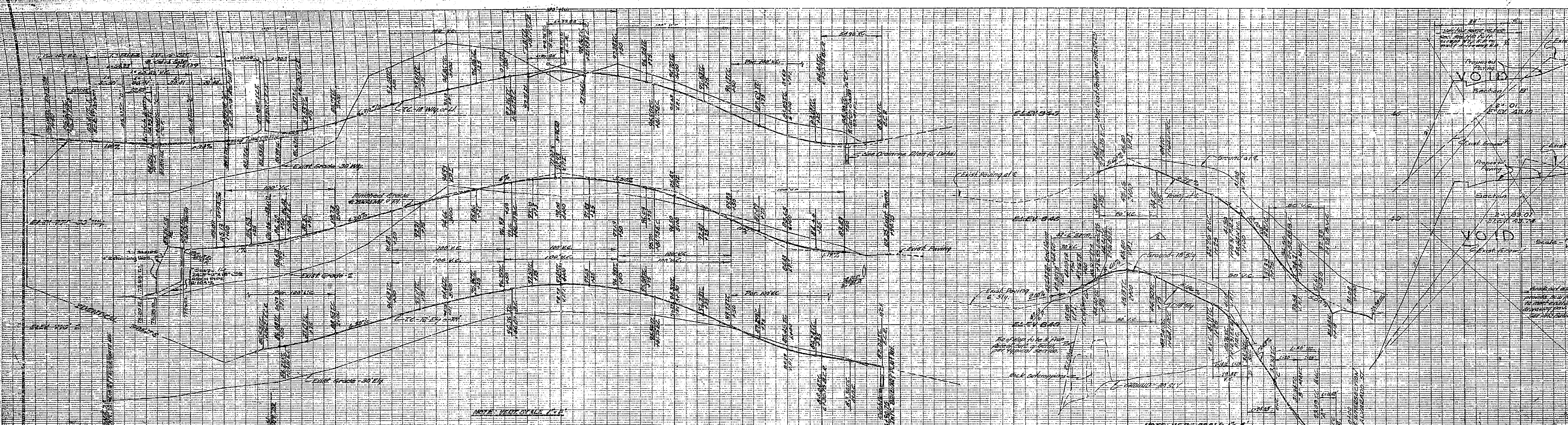
HORIZ. SCALE 1"=40' VERT. SCALE 1"=10'

APPROVED BY: *[Signature]*

NO. R-109

DATE: 6/19/60 SHEET 1 OF 3





STREET NAME SIGN SCHEDULE

① BRAEMAR PL. 4500	4500
② PALM AVE. 4600	4600
③ ALVARADO ST. 4600	4600
④ GLENWOOD DRIVE 4600	4600

Street Name Sign and Post to be furnished and installed by Subdivider as per City Specs and Standard Drawg. No. 652

BENCH MARK: City B.M. 318 in Guy Post No. R-200 at Bend in Tequesquite Ave. Elev. 727.40

DATE: 11/15/50
 SHEET: 1 OF 1

If the subdivider desires to remove or alter any portion of the base material, additional soil tests may be required of subdivider expense after streets are prepared for paving. Subdivider will contract with the City of Riverside, before making tests. The City of Riverside will make a test of base material in each before paving can be initiated. Results of tests must indicate that the base material is satisfactory to the respective Division.

F. DAVIDSON - CIVIL ENGINEER
 R.E. NO. 652
 RIVERSIDE, CALIFORNIA

APPROVED BY: *[Signature]* DATE: 11/15/50

CITY OF RIVERSIDE, CALIFORNIA
 DEPARTMENT OF PUBLIC WORKS

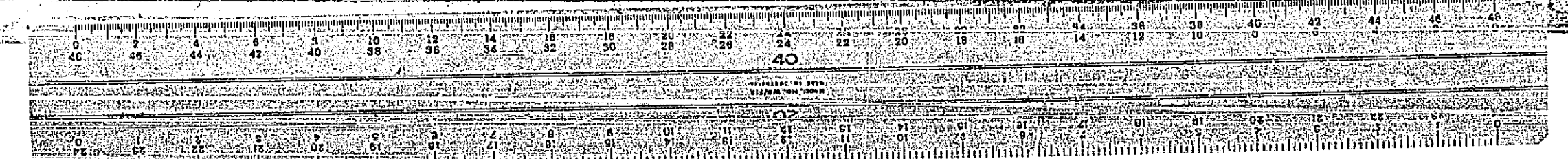
STREET PLAN & PROFILE

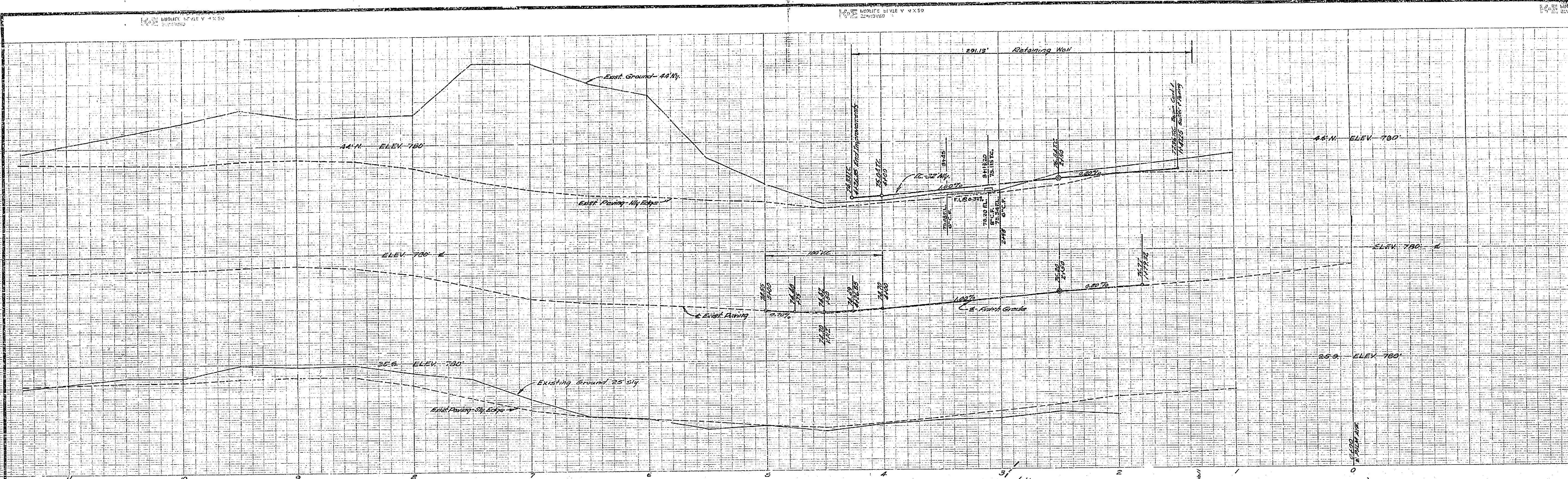
PREPARED BY: *[Signature]*

DATE: 11/15/50

NO. **R-100**

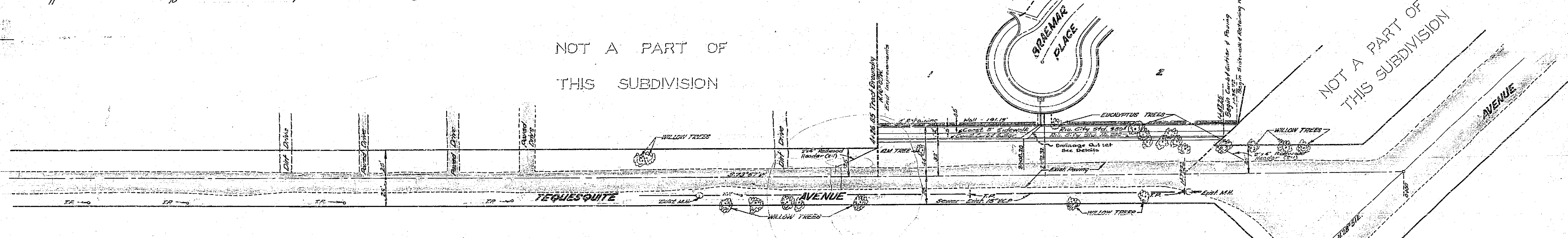
SHEET 1 OF 1



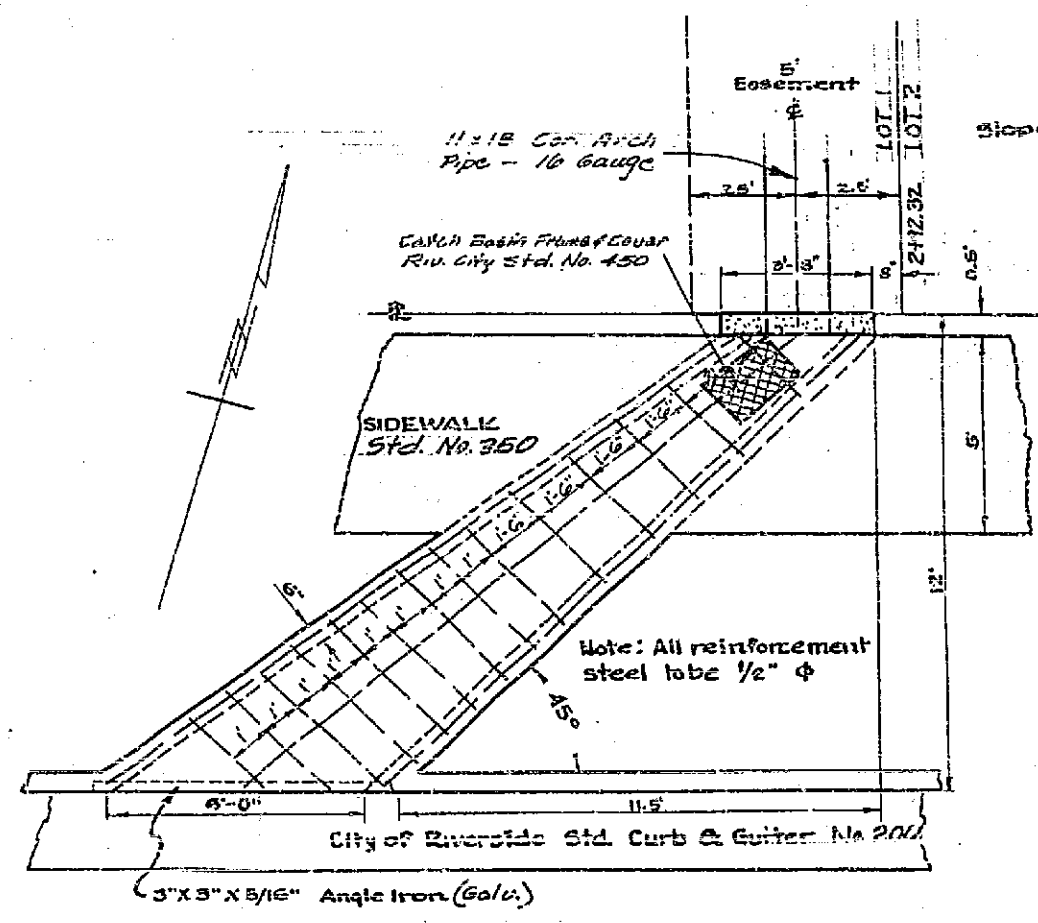


NOT A PART OF
THIS SUBDIVISION

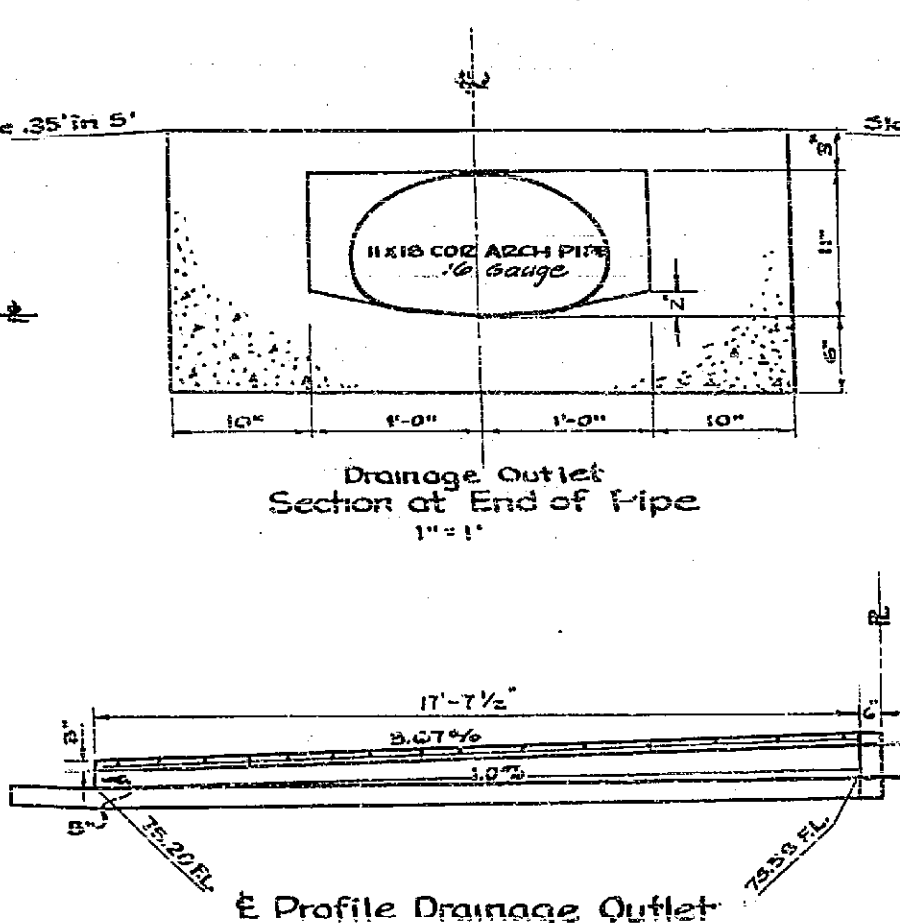
NOT A PART OF
THIS SUBDIVISION



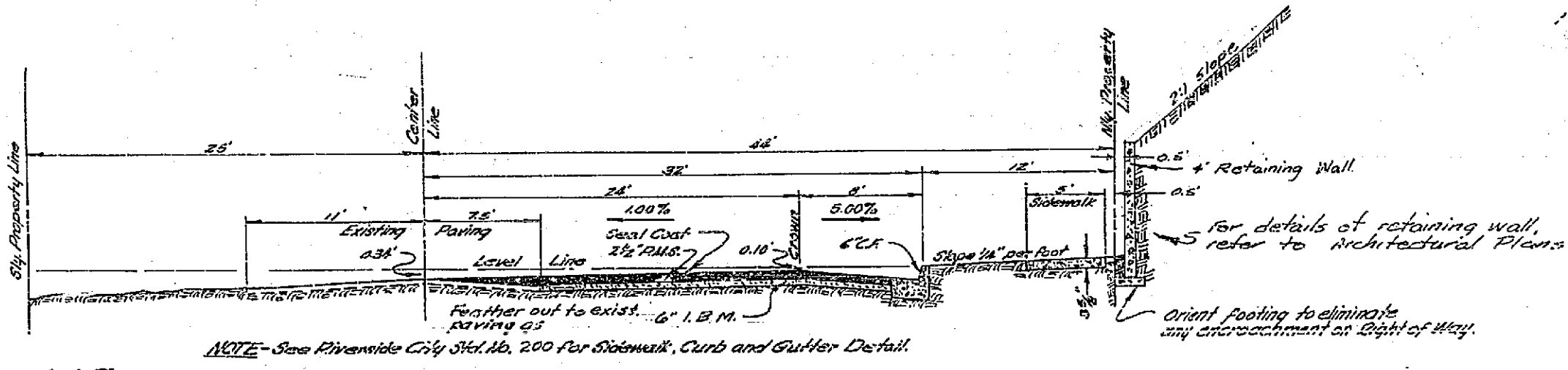
CITY BENCH MARK - Spikes in Guy Pole No. 430451
at End of Tequesquite Ave. Elev. 792.41



Plan Drainage Outlet
SCALE 1"=4'

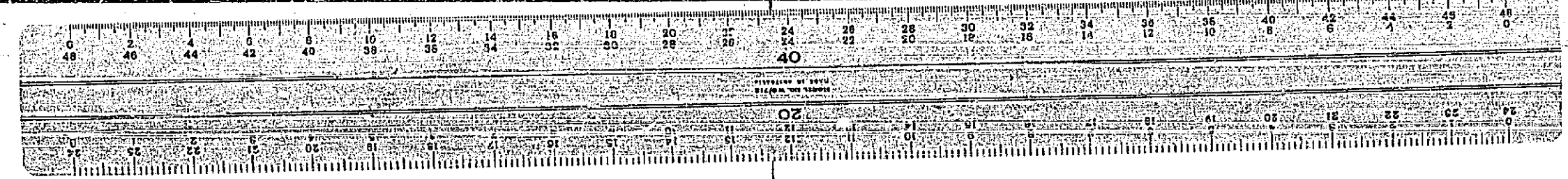


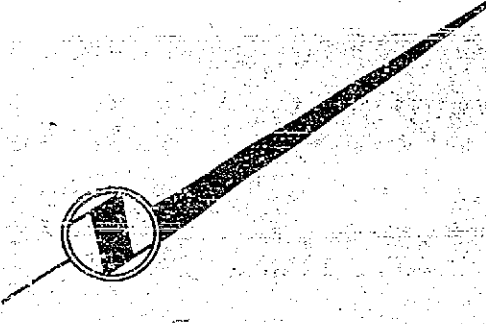
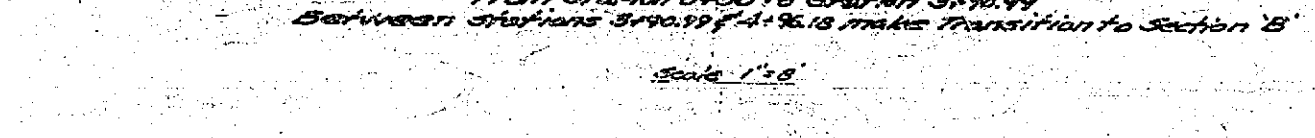
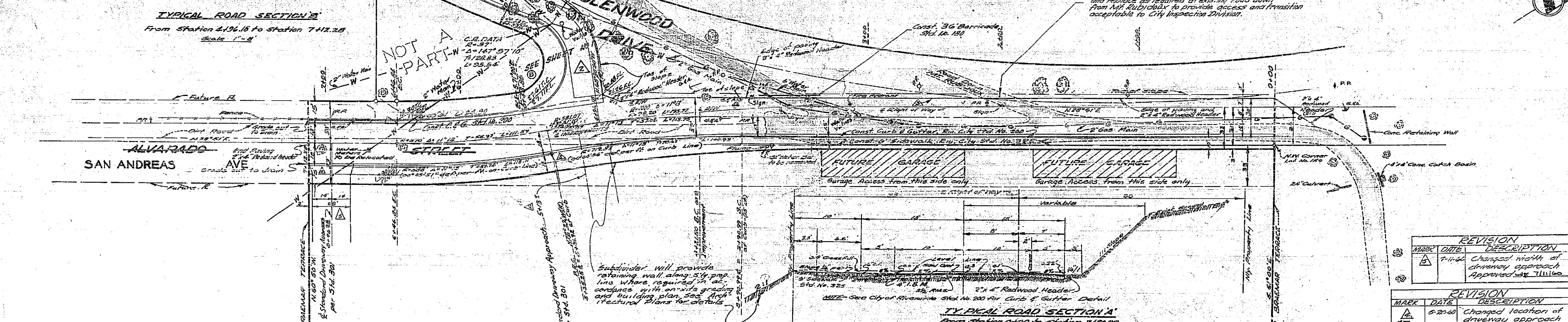
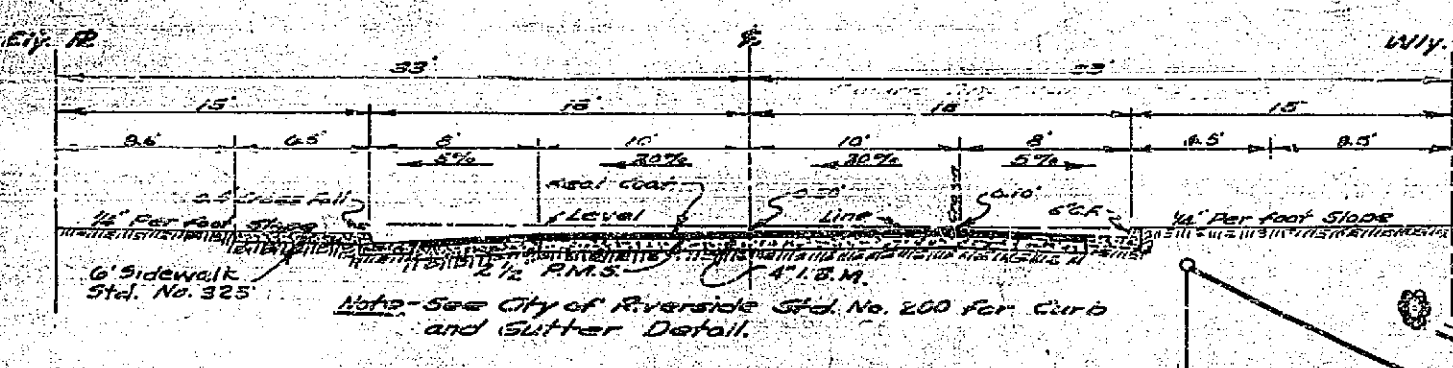
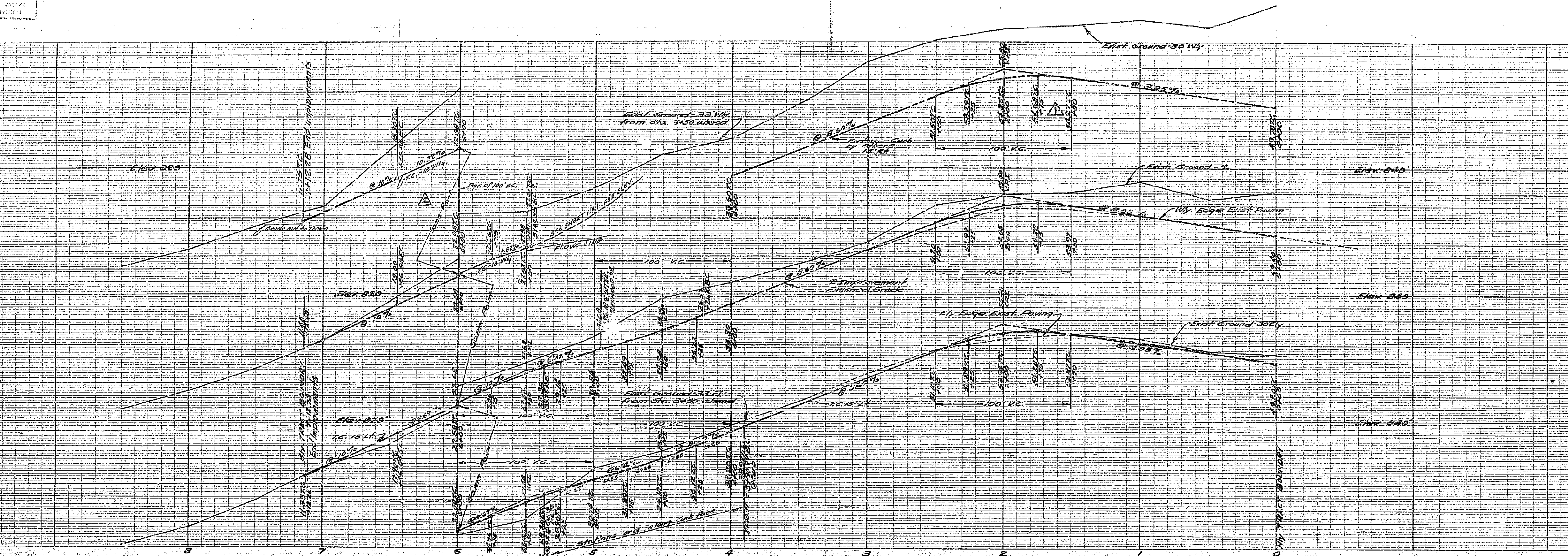
& Profile Drainage Outlet
SCALE 1"=4'



TYPICAL SECTION
TEQUESQUITE AVENUE
14.7.25 to 14.26.85
Scale: Hor. 1"=8'
Vert. 1"=8'

12.578.587.008
J.F. DAVIDSON-CIVIL ENGINEER
 RIVERSIDE, CALIFORNIA
 APPROVED BY *J.F. Davidson* DATE *1/15/60*
 CITY OF RIVERSIDE, CALIFORNIA
 DEPARTMENT OF PUBLIC WORKS
 STREET PLAN & PROFILE
 TEQUESQUITE AVENUE
 BARRACAS TERRACE
 HORIZ. SCALE 1"=40' VERT. SCALE 1"=4'
 APPROVED BY *J.F. Davidson*
 Director of Public Works
 DATE *1-15-60* NO. **R-109**
 SHEET 2 OF 3





BENCH MARK
I.B.M. - Cross on the S.E. corner of 4'x4' conc. curb (Station 7+13.28) 80 ft. E of cross on rock N.W. corner. Elevation 555.90

NOTE - This street replaces street No. 3 of Streamer Terrace dated May 1955.

J.H. PEASE, CIVIL ENGINEER
R.E. NO. 862
RIVERSIDE, CALIFORNIA
APPROVED BY *[Signature]* DATE 2-10-57

CITY OF RIVERSIDE, CALIFORNIA
DEPARTMENT OF PUBLIC WORKS

STREET PLAN & PROFILE
SAN ANDREAS AVE
ALVARADO AVE & GLENWOOD DR

EDMAR TERRACE
HORIZ. SCALE 1"=40' VERT. SCALE 1"=5'

APPROVED BY *[Signature]*
Director of Public Works
March 11, 1957

MARK	DATE	REVISION DESCRIPTION
△	5-20-56	Changed width of driveway approach Approved July 5, 1956

MARK	DATE	REVISION DESCRIPTION
△	5-20-56	Changed location of driveway approach Approved July 5, 1956

MARK	DATE	REVISION DESCRIPTION
△	7-1-57	JUST GLENWOOD DRIVE NOTIFIED POWER COMPANY Approved by [Signature] 7-1-57
△	7-23-57	Just Alvarado Drive notified Power Company Approved by [Signature] 7-23-57

