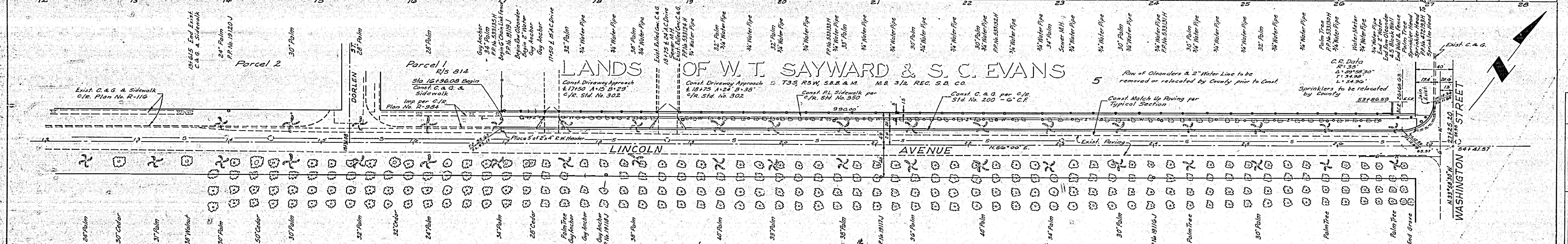
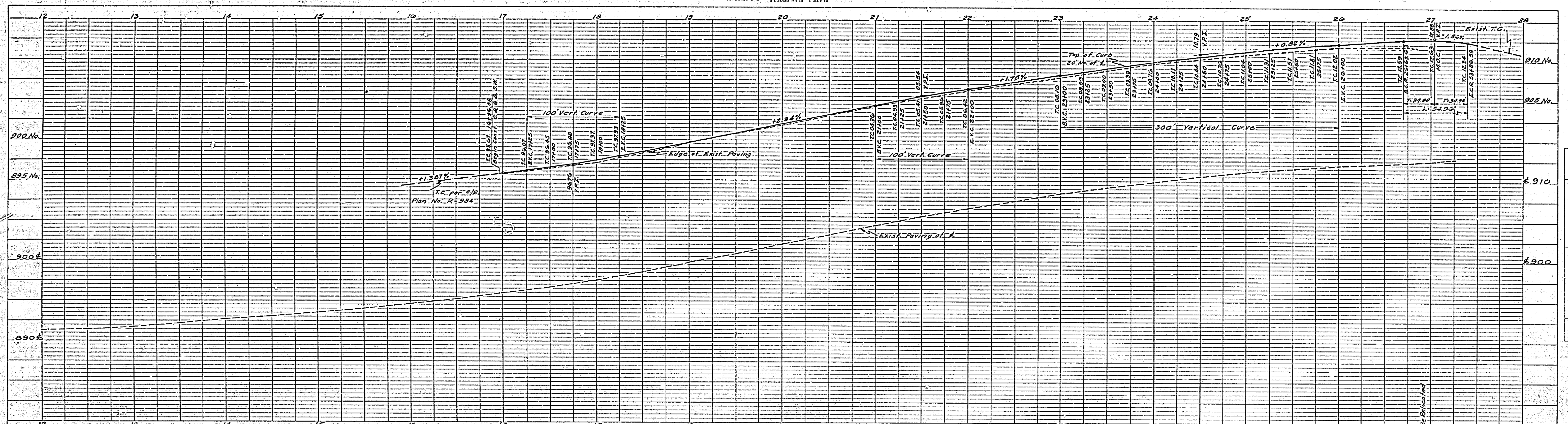
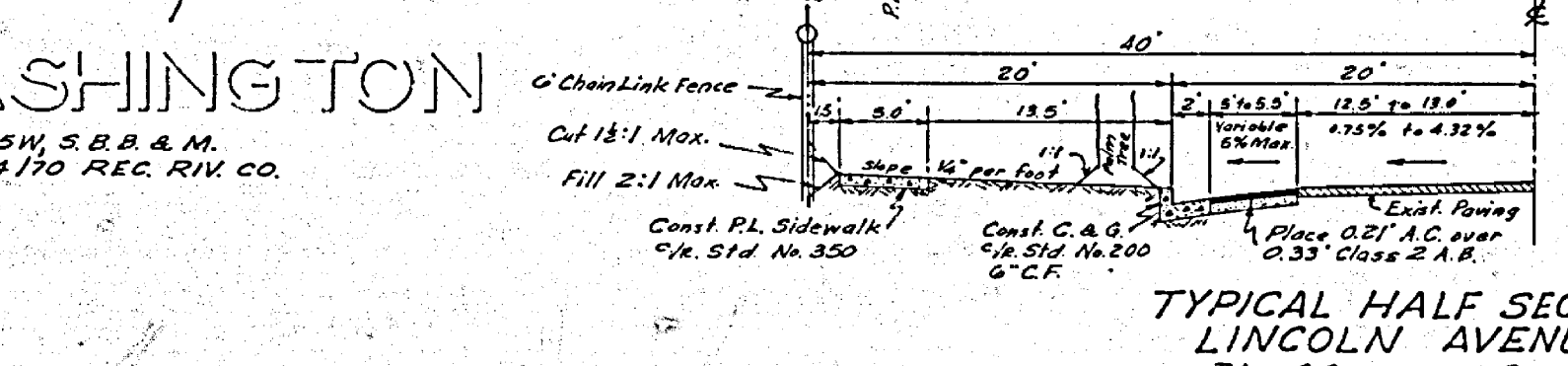


PLATE 1 - PLAN PROFILE OF LINCOLN AVENUE



- GENERAL NOTES**
1. It shall be the responsibility of the Contractor to clear the R/W in accordance with the provision of law as it affects each Utility including irrigation lines and appurtenances and at no cost to the City.
 2. Construction shall be in accordance with the City of Riverside, Dept. of Public Works, Specifications No. 461 and Standard Drawings.
 3. Prime coat, seal coat, and paint binder are required.
 4. Deleted.
 5. Trim edge of existing pavement, where new paving joins existing pavement is a clean, straight line. Construct match-up paving as shown and overlay paving as directed in the field to produce a smooth crown section.
 6. The finished sub grade shall have a compaction of not less than 90% to a depth of 0.5 feet as determined by test method No. Calif. 216 immediately prior to placement of the cover.



BENCH MARK
RR Spike No. Side 32' Palm 2' from
Ground SW Corner Lincoln Avenue
ELEV. 914.36

| | | | | | | | |
|--|--|---|---|--|---------------------|--|---|
| <p><i>A. C. Keith</i> Oct. 29, 1965 A. C. KEITH COUNTY SURVEYOR & ROAD COMMISSIONER RIVERSIDE COUNTY, CALIFORNIA</p> | | <p>CITY OF RIVERSIDE, CALIFORNIA DEPARTMENT OF PUBLIC WORKS</p> | | <p>STREET PLAN & PROFILE LINCOLN AVENUE MADISON ST. TO WASHINGTON ST. STA. 16+96.08 TO STA. 26+85.00</p> | | <p>PROJECT NO. 55290 R-1093 SHEET 1 OF 1 FILE NO.</p> | |
| <p>ROAD NO. 3762 SURVEY NO. 3762</p> | <p>WORK ORDER NO. 583-774 FIELD BOOK NO. 967</p> | <p>APPROVED BY OFFICE ENGINEER PARK DEPARTMENT TRAFFIC DIVISION ASSIST. CITY ENG. UTILITIES DEPT.</p> | <p>BY DATE 11-4 11-7 11-7 11-7 11-7</p> | <p>APPROVED BY DIRECTOR OF PUBLIC WORKS</p> | <p>DATE 11-7-65</p> | <p>HORIZ. SCALE: 1" = 50' VERT. SCALE: 1" = 5'</p> | <p>DESIGNED BY R.J.M. DRAWN BY R.J.M. CHECKED BY Bob S.</p> |

| PROFILE | DATE |
|---------|------|
| | |
| | |
| | |

| PLAN | DATE |
|------|------|
| | |
| | |
| | |