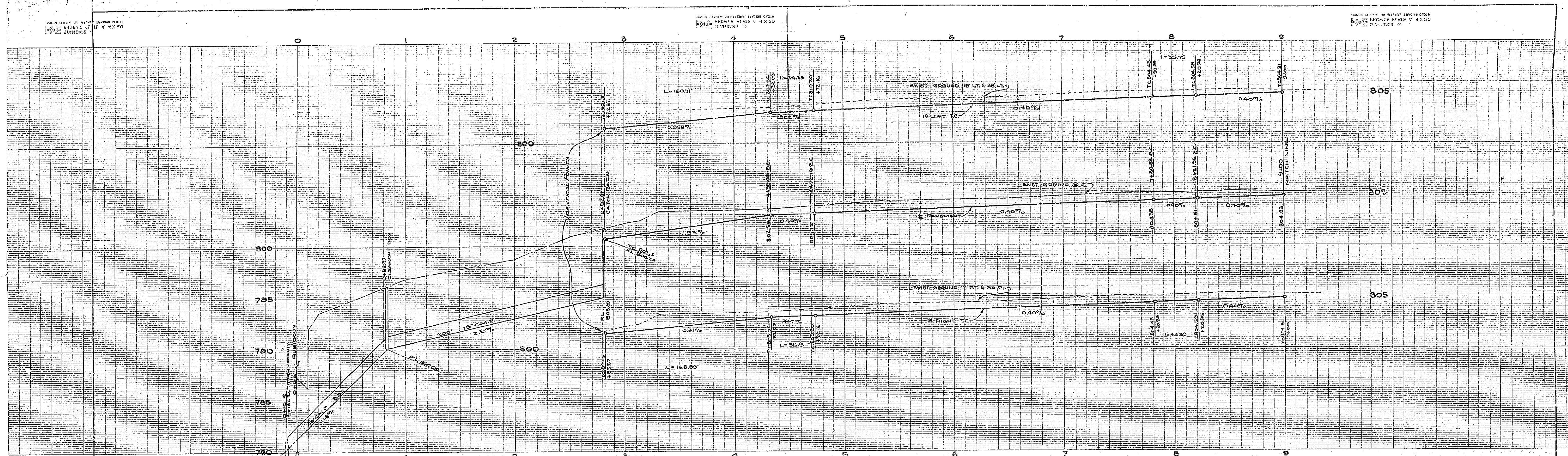


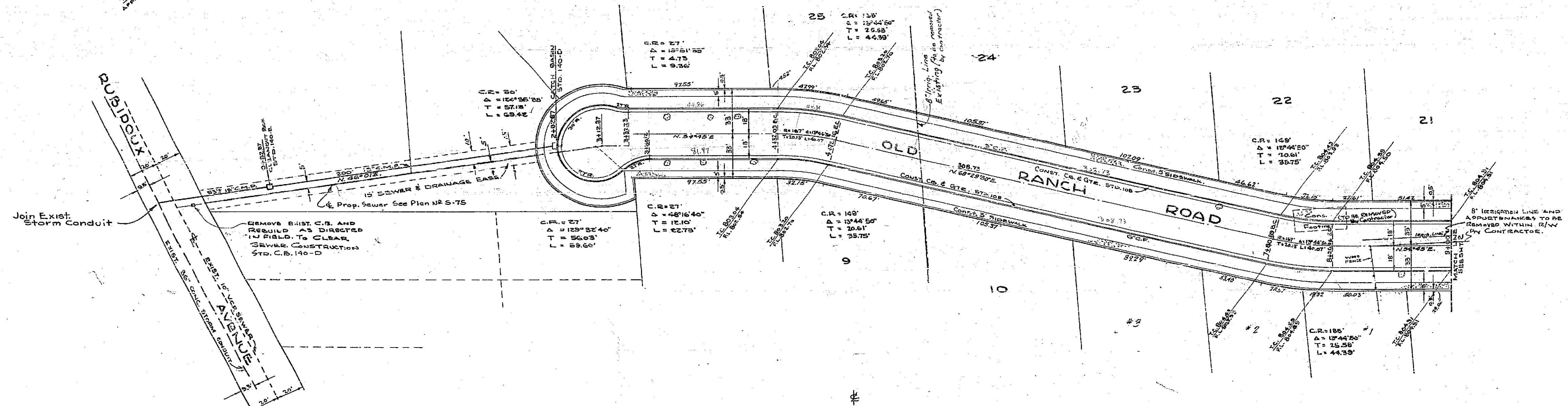
SCALE 1" = 40' HORIZ. SCALE 1" = 4' VERT.

DATE OF SURVEY: 11/27/58
 BY: DONALD J. McKEE, L.I.C. SURVEYOR
 PROJECT: STREETS & PARKS DEPARTMENT

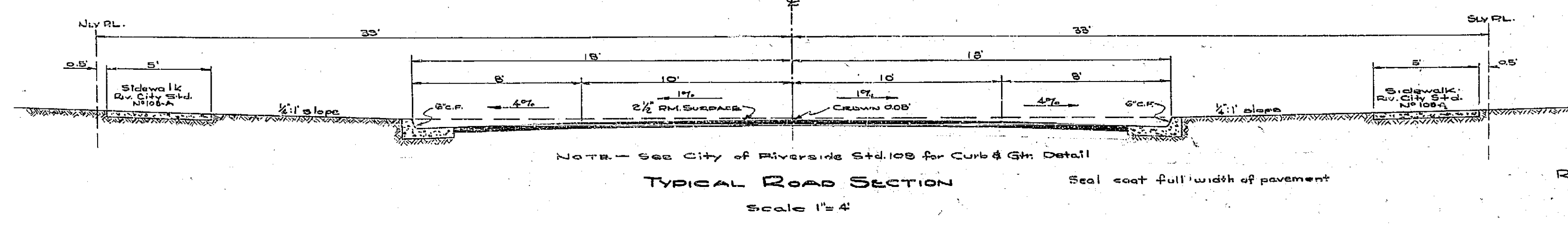
SCALE 1" = 40' HORIZ. SCALE 1" = 4' VERT.



BENCH MARK:
 CITY B.M. LEAD & TIN IN S.E. CORNER OF
 WATER BOX ON S.W. CORNER OF GRAND AVE.
 AND RUBIDOUX AVE. EL. 802.64



Tree fences & bids footings to be removed by contractor as necessary to clear right of way. Private irrigation line to be removed by contractor.
 See Plan N-5-75 for Sewer Plan and Profile.
 34 Bottle Trees shall be planted in Parkway strips as directed by the City Park Department.

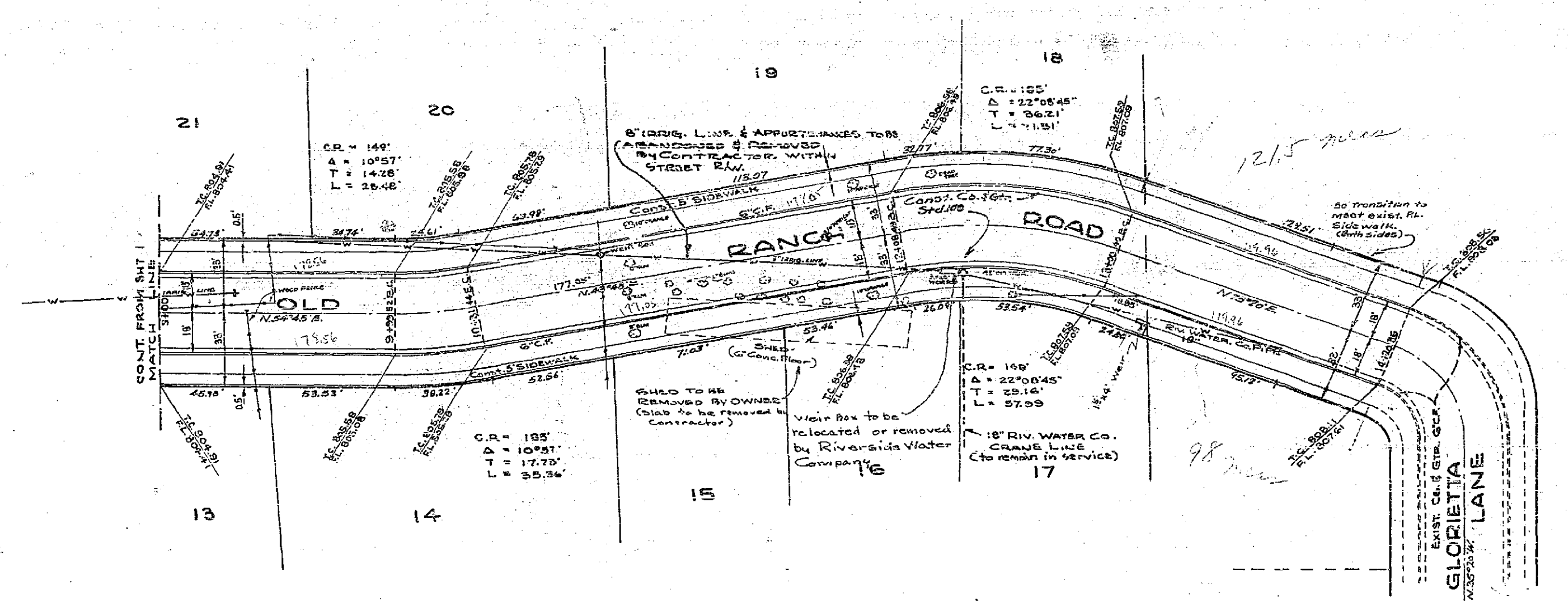
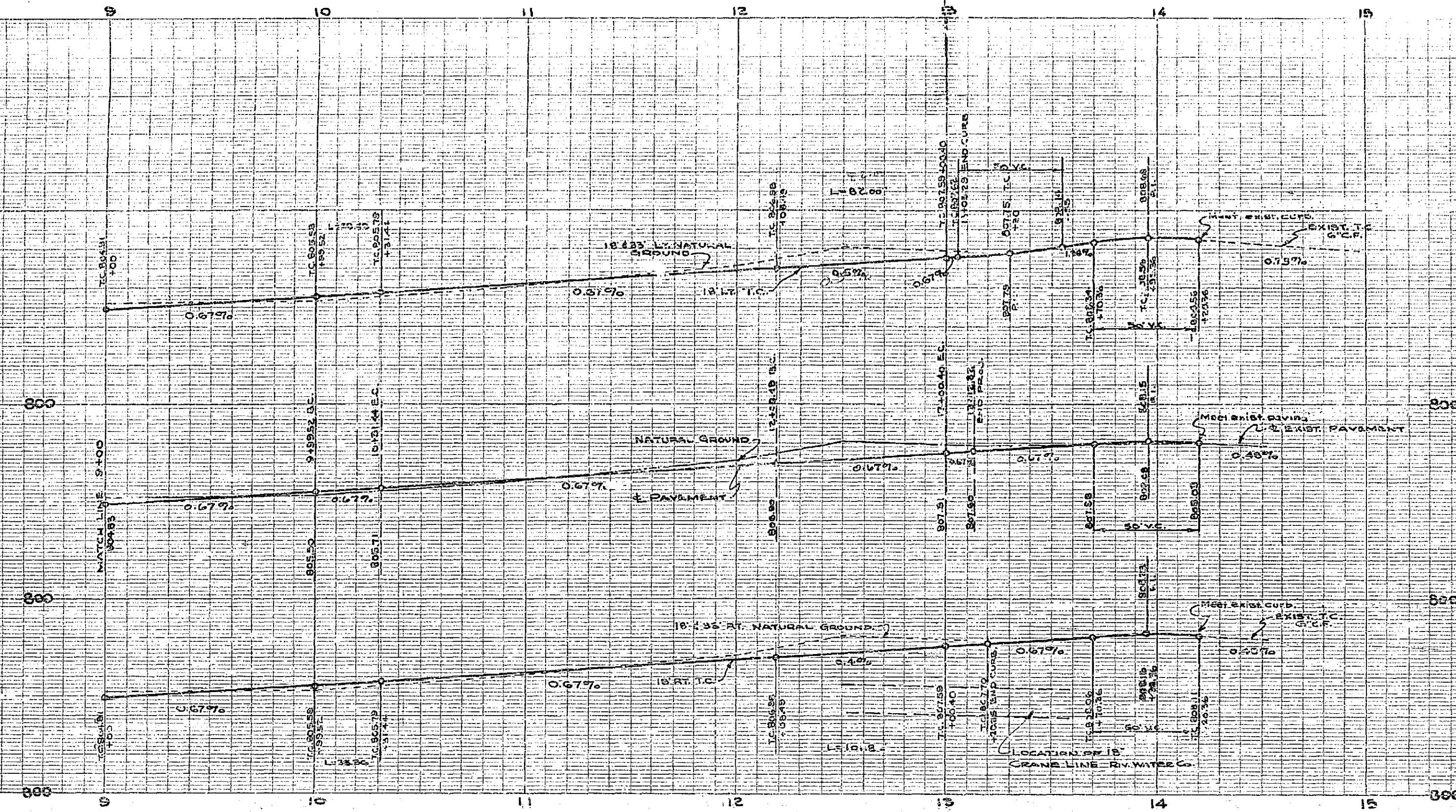


NOTE - See City of Riverside Std. 108 for Curb & Gdn. Detail
TYPICAL ROAD SECTION
 Scale 1" = 4'

REVISIONS:
 1-30-58 Added Note on Tree Planting, etc.

DONALD J. McKEE, L.I.C. SURVEYOR	
L.S. No. 1825	
RIVERSIDE, CALIFORNIA	
Approved by <i>[Signature]</i> <i>[Signature]</i>	
CITY OF RIVERSIDE, CALIFORNIA	
DEPARTMENT OF PUBLIC WORKS	
STREET PLAN & PROFILE	
OLD RANCH ROAD	
1911 ACT	
IMPROVEMENT DISTRICT	
Drawn Scale 1" = 40'	Vert Scale 1" = 4'
Approved by <i>[Signature]</i>	NO. R-110
Director of Public Works	SHEET 1 OF 3
J.S. DATE 1/27/58	

5' GRADES
 1" = 10' HORIZONTAL
 1" = 10' VERTICAL



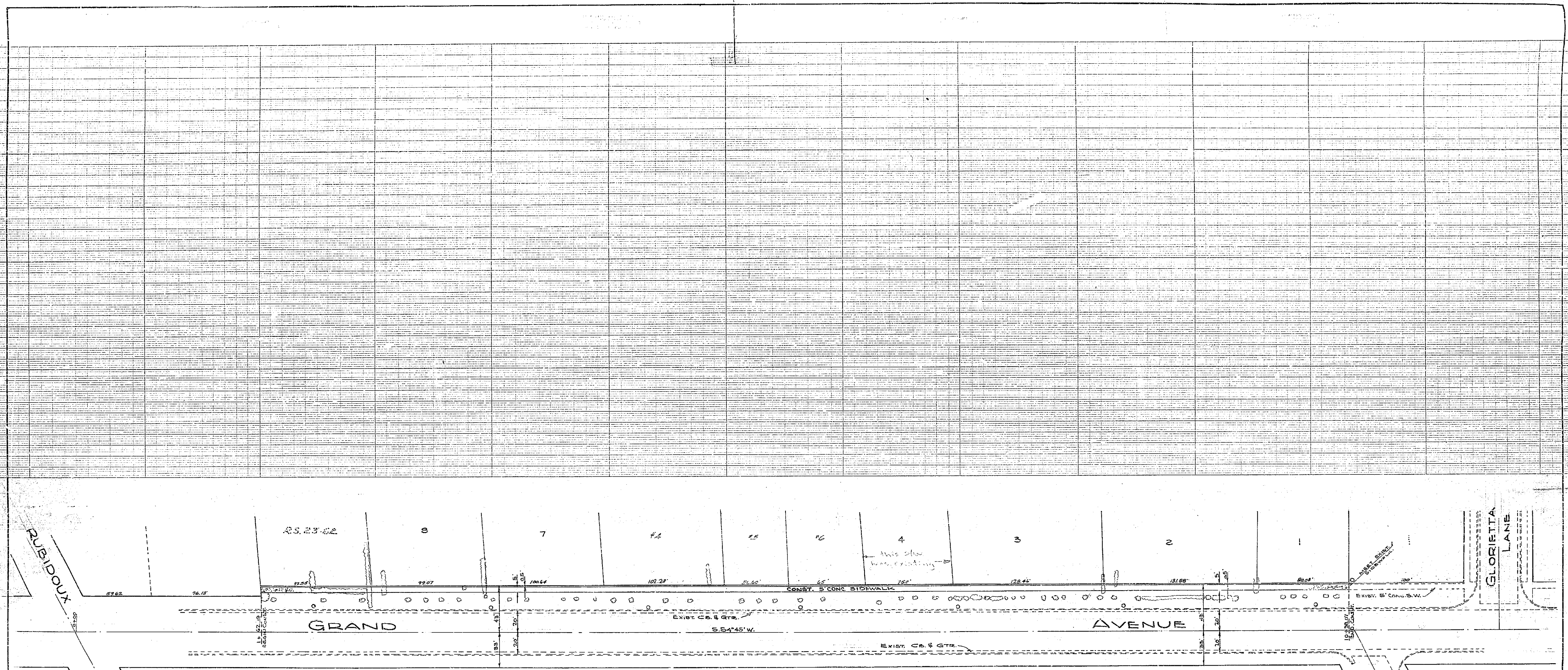
SCALE 1"=40'

BENCH MARK:
 CITY B.M. LEAD & TIN IN S.E. CORNER OF
 WATER BOX ON S.W. CORNER OF GRAND AVE.
 AND RUBIDOUX AVE. EL. 802.64

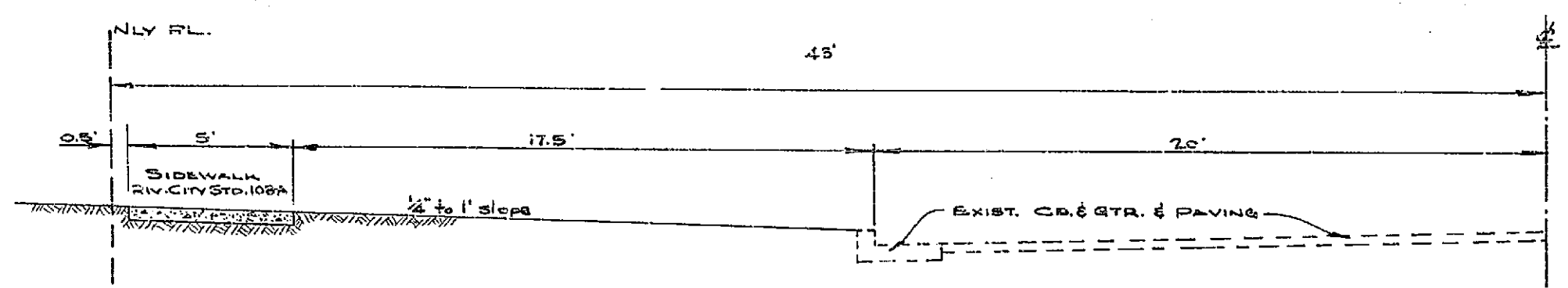
Trees, fences & Bldg. footings
 to be removed by Contractor as
 necessary to clear Right-of-
 way.
 Private irrigation line to be
 removed by Contractor.
 See Plan 5-75 for Sewer Plan & Profile

DONALD J. MCKEE, L.I.C. SURVEYOR
 L.S. No. 1825
 RIVERSIDE, CALIFORNIA
 Approved by *Donald J. McKee* Date *10-27-11*
 CITY OF RIVERSIDE, CALIFORNIA
 DEPARTMENT OF PUBLIC WORKS
 STREET PLAN & PROFILE
 OLD RANCH ROAD
 1911 ACT
 IMPROVEMENT DISTRICT
 Horiz. Scale 1"=40' Vert. Scale 1"=10'
 Approved By *Donald J. McKee*
 Director of Public Works
 NO. R-110
 Date 11/21/18 Sheet 2 of 3

833



TREES & SHRUBS TO BE REMOVED TO FACILITATE CONST. OF SIDEWALK. TO BE REMOVED BY CONTRACTOR.



CROSS SECTION OF GRAND AVE. SHOWING SIDEWALK LOCATION SCALE 1"=4'

DONALD J. MCKEE, L.C. SURVEYOR
 L.S. No. 1025
 RIVERSIDE, CALIFORNIA
 Approved by *[Signature]*
 CITY OF RIVERSIDE, CALIFORNIA
 DEPARTMENT OF PUBLIC WORKS
 Sidewalk Plan of
 GRAND AVENUE
 OLD RANCH ROAD
 1911 ACT IMPROVEMENT DIST.
 Horiz. Scale 1/4"=10' Vert. Scale 1"=4'
 APPROVED BY *[Signature]* NO. R-110
 DIRECTOR OF PUBLIC WORKS
 U.S. DATE 11/1/58 SUBST. 3 OF 3

