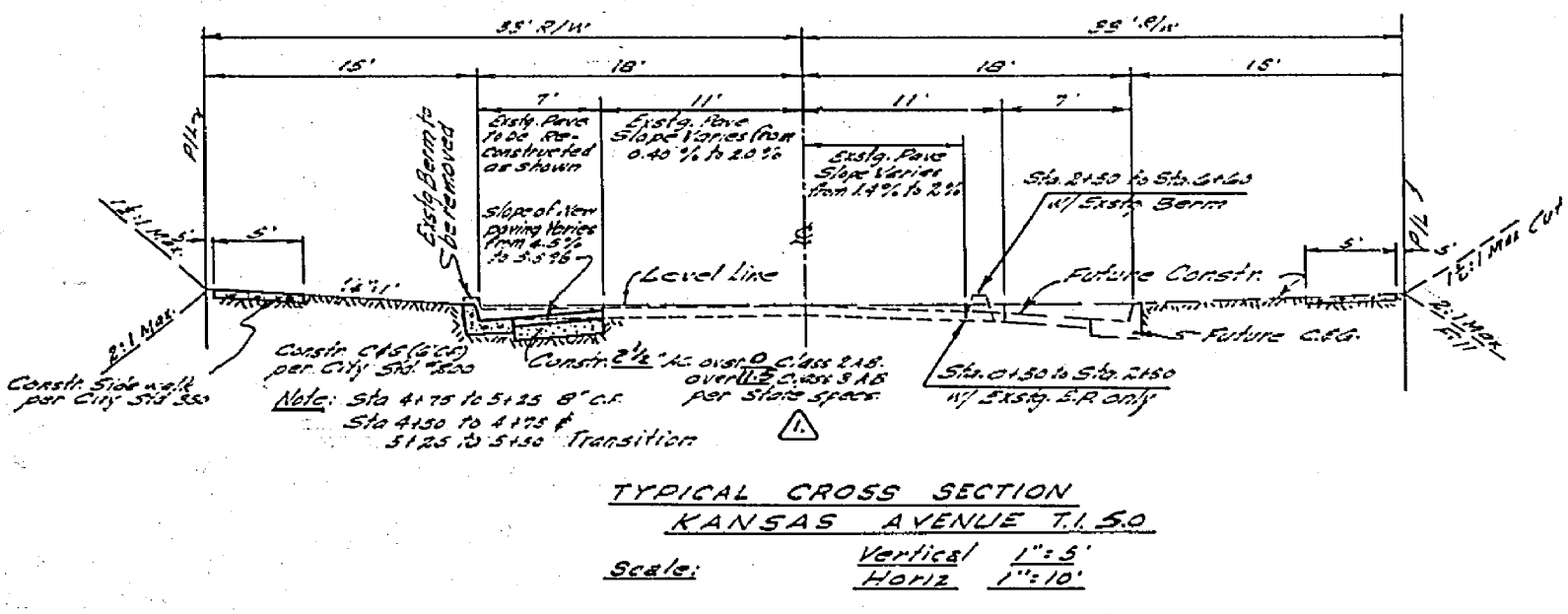
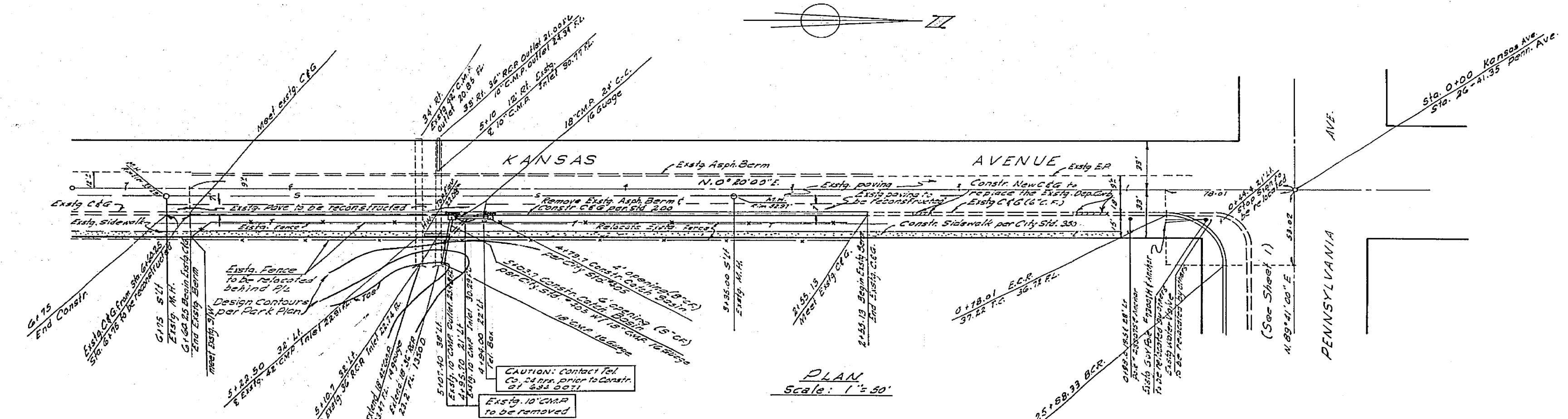
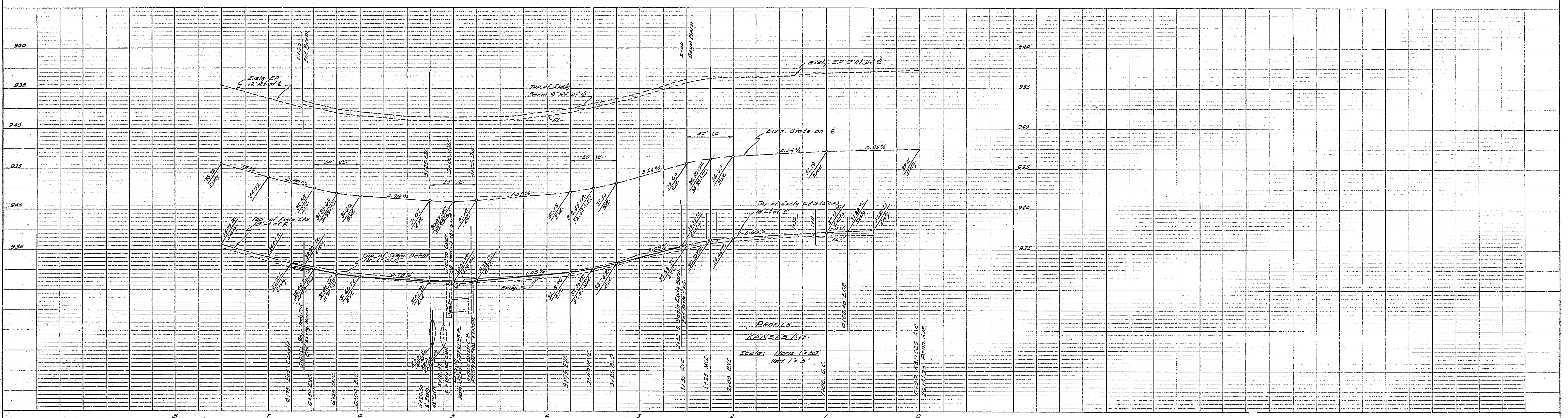


- GENERAL NOTES:**
- It shall be the responsibility of the contractor to clear the right of way in accordance with the provisions of laws which affect each utility including irrigation lines and appurtenances and at no cost to the City.
  - Construction shall be in accordance with the City of Riverside Department of Public Works' specifications No. 401 and Standard Drawings.
  - Prime Coat, Seal Coat, and Paint Binder are required.
  - Grading will require a permit under ordinance for a cut or fill exceeding 100 cubic yards or a fill over one foot in depth.
  - The City will arrange a soil test to determine the requirement on Imported Base Material after the streets are prepared to rough grade.
  - Trim edge of existing pavement to a clean, straight edge line, where new paving joins existing pavement, construct match up paving as shown and a overlay paving as directed in the field to produce a smooth crown section. Overlay has been called for by the engineer to the approval of the Engineer.
  - Excavating & construction in the vicinity of existing underground utilities shall be done with special care.
  - The finished sub-grade shall have a compaction of not less than 90% for a depth of 0.5 feet and determined by test method No. 2017. 212 immediately prior to placement of the cover.
  - For relocation of any City domestic or irrigation water facility, or electric power utility facility to be done by City forces, contact L. A. Eastman, Water Commercial Engineer at 787-7441. Schedule about 2 weeks to process a work order before relocation begins.

HUGH M. GALLAHER Civil Engineer Riverside California Approved by <i>[Signature]</i> Date 5/20/65	
CITY OF RIVERSIDE CALIFORNIA DEPARTMENT OF PUBLIC WORKS	
PLAN & PROFILE PENN. AVE. - SOUTH SIDE FROM KANSAS AVE. TO 660' W'LY EASTSIDE PARK	
DESIGNED BY DRAWN BY RECOMMENDED BY	CHECKED BY <i>[Signature]</i> APPROVED BY <i>[Signature]</i> DIRECTOR OF PUBLIC WORKS DATE 5/20/65
R-1118 SHEET 1 OF 2	

Bench Mark Intersection of Kansas Ave & Penn Ave.  
 Elev. 737.41  
 5/20/65  
 76-RS-5875



REVISIONS		
MARK	DATE	DESCRIPTION
△	1-27-66	Road Base Measurements etc. Heavy Approved wdy 1-27-66

**HUGH M. GALLAHER**  
 Civil Engineer  
 Riverside, California  
 Approved by *Hugh M. Gallaher* Date 1-27-66

CITY OF RIVERSIDE CALIFORNIA  
 DEPARTMENT OF PUBLIC WORKS

**PLAN & PROFILE**  
**KANSAS AVE. - EASTSIDE**  
 FROM PENN. AVE. TO 675' SLY  
 EASTSIDE PARK

DESIGNED BY: \_\_\_\_\_ CHECKED BY: *Hans Wig*  
 DRAWN BY: \_\_\_\_\_ RECOMMENDED BY: \_\_\_\_\_  
 ASSISTANT CITY ENGINEER

APPROVED BY: *Hugh M. Gallaher*  
 DIRECTOR OF PUBLIC WORKS

R-1118  
 DATE: *Jan 26, 1966*  
 SHEET 2 OF 2

BENCH MARK: Intersection of Kansas Ave  
 & Penn Ave. Elev. 987.41  
 12-9-23/68 R.T. 351/3

PROFILE  
 DATE: \_\_\_\_\_  
 NO. \_\_\_\_\_

PLAN  
 DATE: \_\_\_\_\_  
 NO. \_\_\_\_\_