

MISSING

MISSING

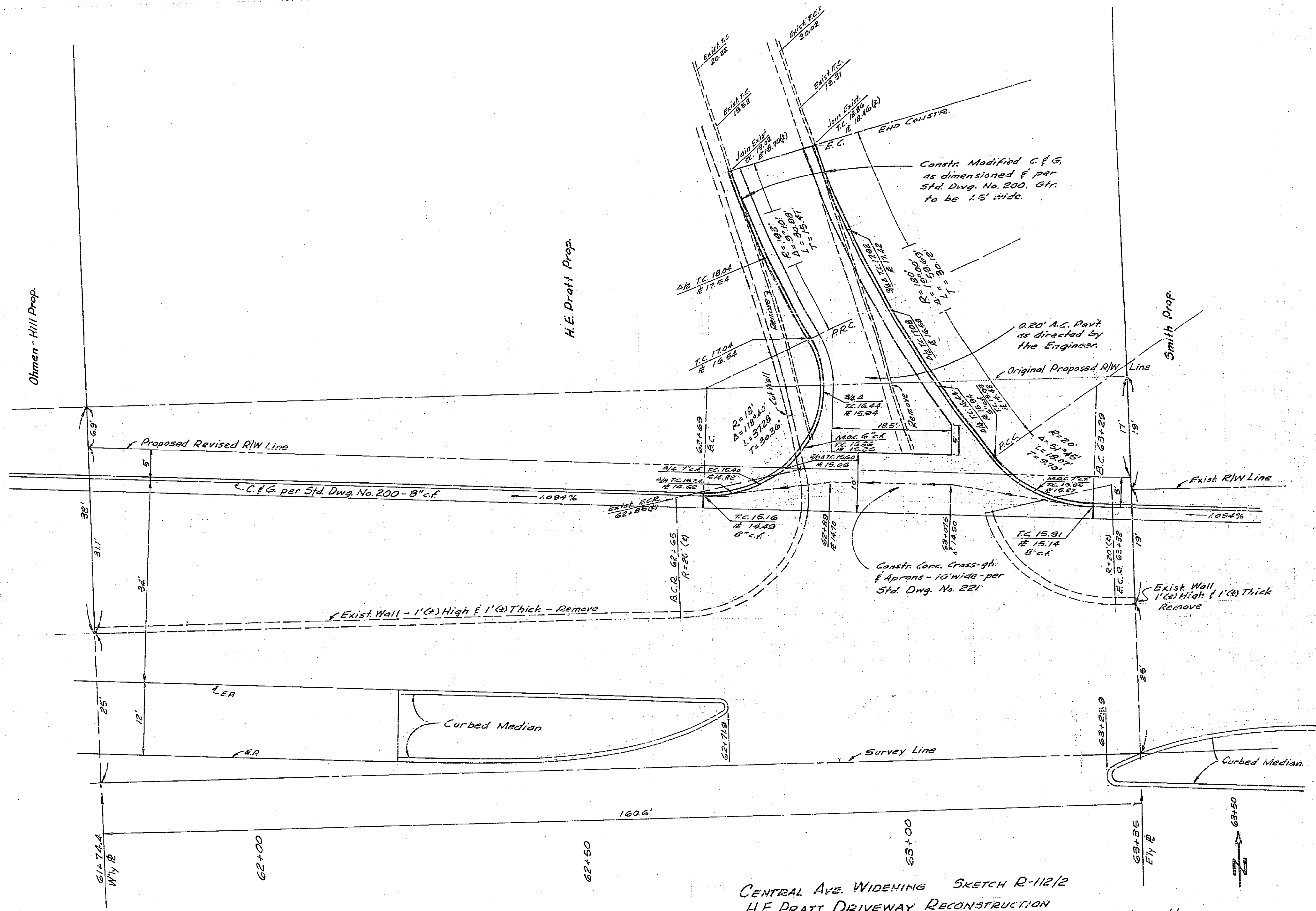
MISSING

MISSING

MISSING

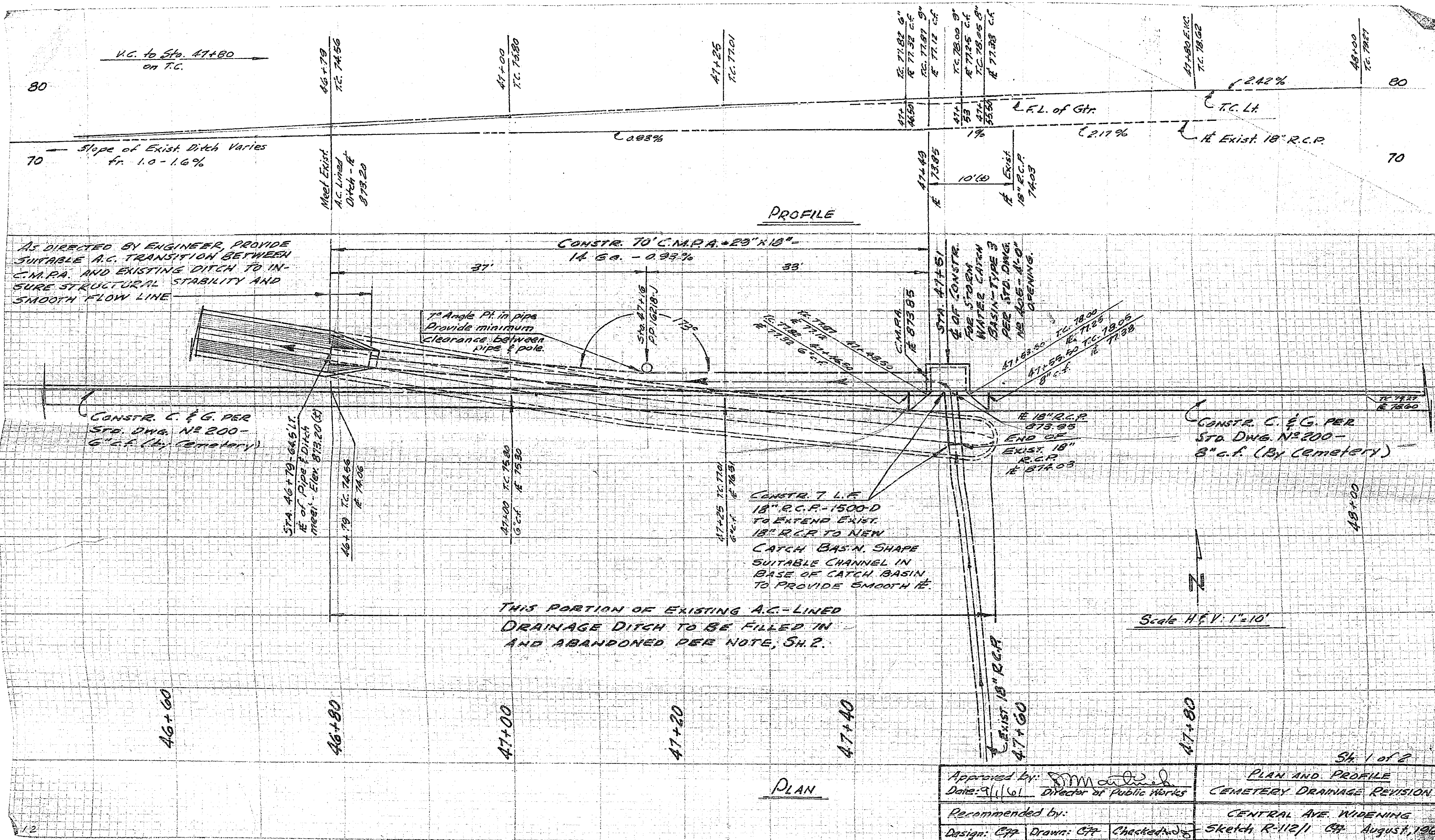
MISSING

MISSING



CENTRAL AVE WIDENING SKETCH R-112/2
 H.E. PRATT DRIVEWAY RECONSTRUCTION
 CFF 10/10/61 Checked _____ Recommended by: _____ Approved by: _____
 Scale: 1" = 10' FB 609/13 & 9/67-68 Date: _____
 Dir. of Public Works

FILE WITH R-112



V.C. to Sta. 47+80 on T.C.

Slope of Exist. Ditch Varies fr. 1.0 - 1.6%

AS DIRECTED BY ENGINEER, PROVIDE SUITABLE A.C. TRANSITION BETWEEN C.M.P.A. AND EXISTING DITCH TO INSURE STRUCTURAL STABILITY AND SMOOTH FLOW LINE

CONSTR. 14' C.M.P.A. 20" x 18" 1.4% - 0.93%

7" Angle Pt. in pipe Provide minimum clearance between pipe & pole

CONSTR. C & G. PER STA. DWG. NO. 200 - 6" c.f. (By Cemetery)

CONSTR. C & G. PER STA. DWG. NO. 200 - 8" c.f. (By Cemetery)

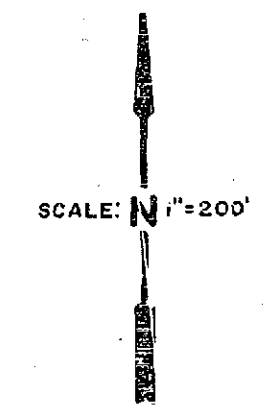
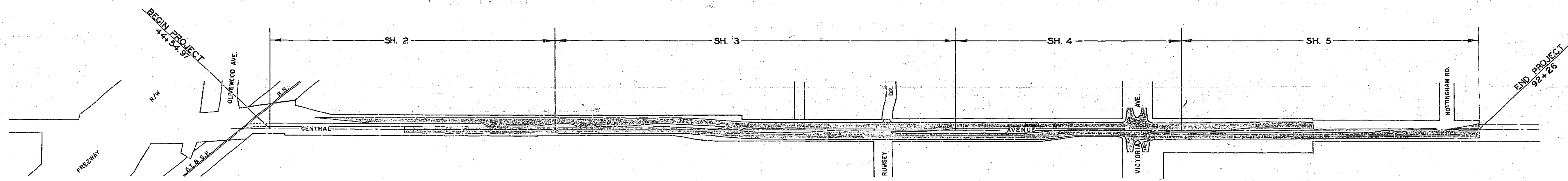
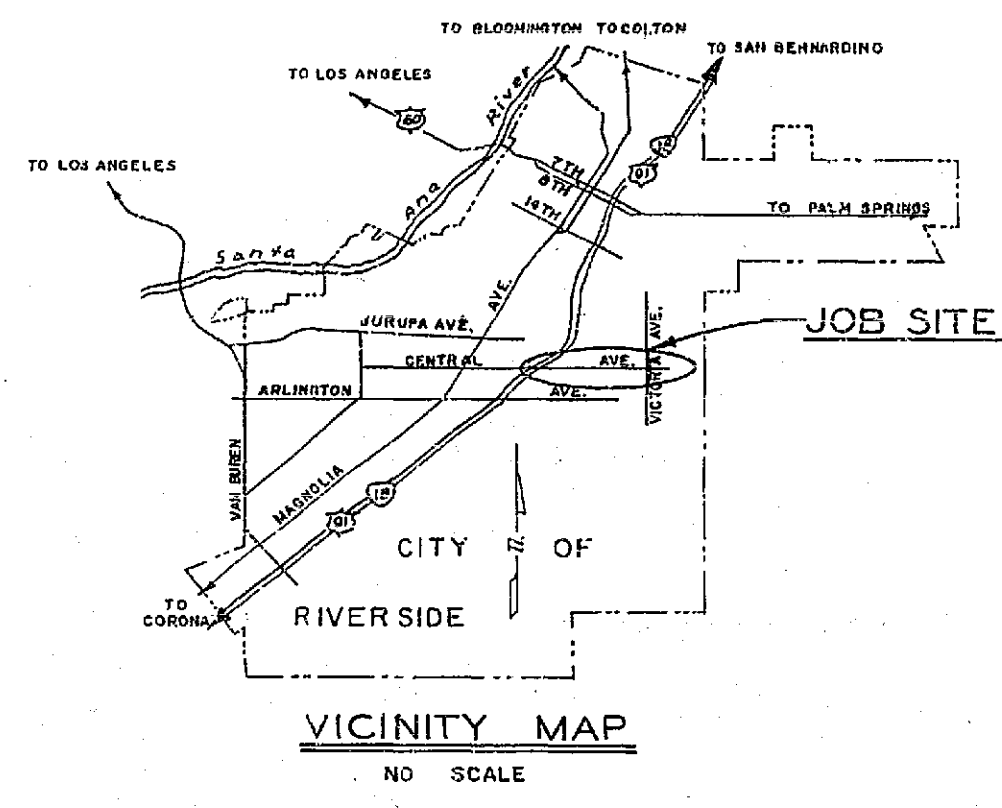
CONSTR. 7 L.F. 18" R.C.P. - 1500-D TO EXTEND EXIST. 18" R.C.P. TO NEW CATCH BASIN. SHAPE SUITABLE CHANNEL IN BASE OF CATCH BASIN TO PROVIDE SMOOTH FLOW

THIS PORTION OF EXISTING A.C.-LINED DRAINAGE DITCH TO BE FILLED IN AND ABANDONED PER NOTE, SH. 2.

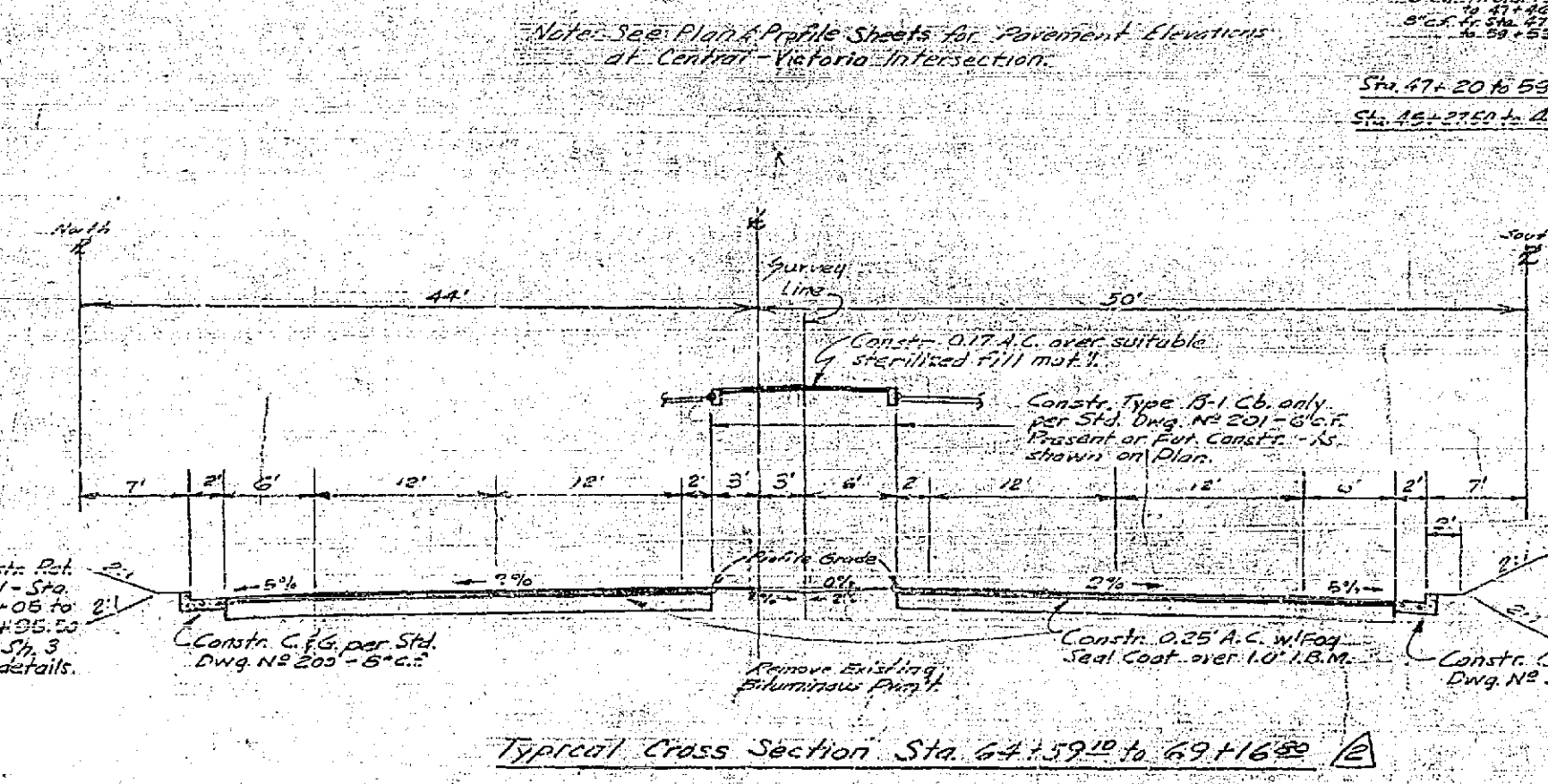
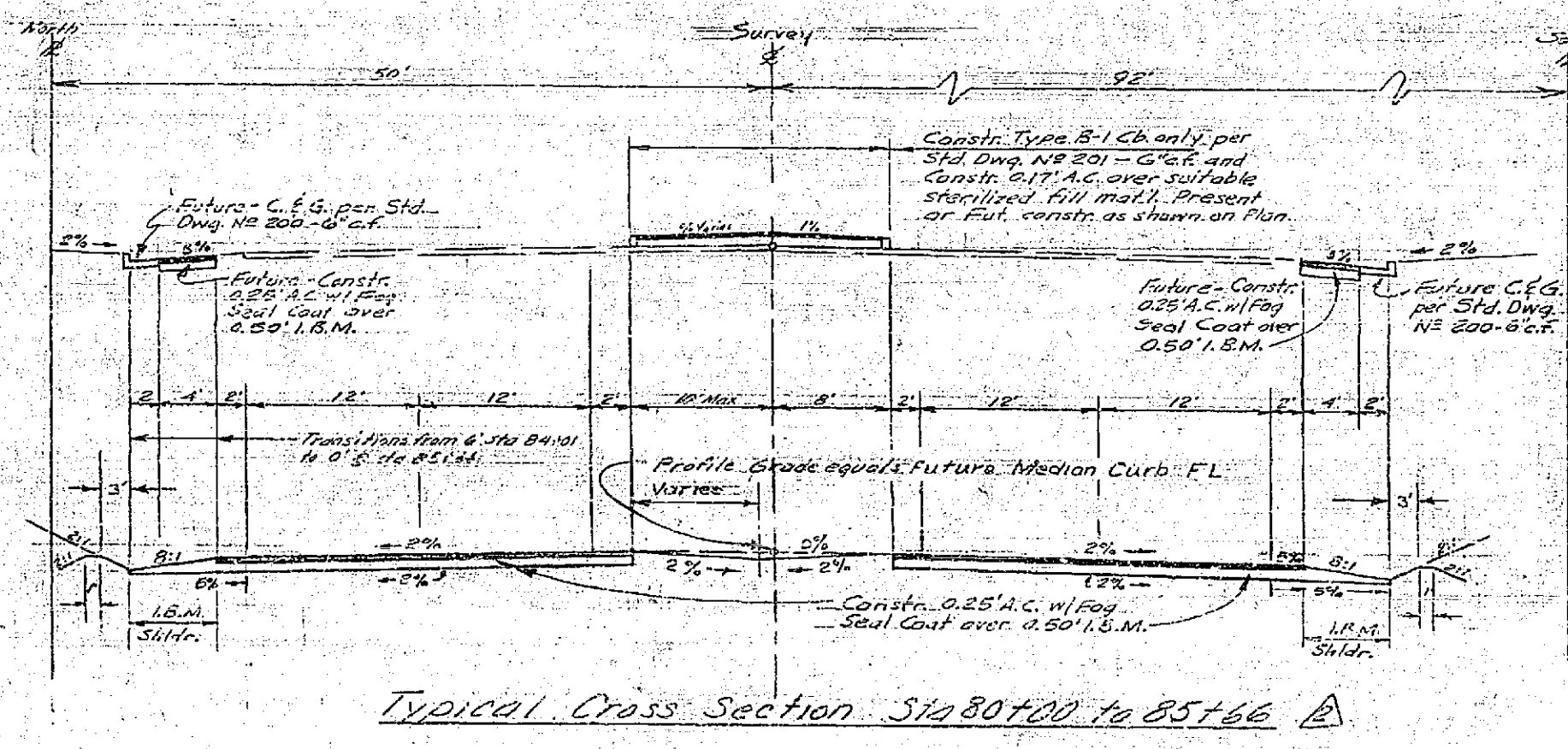
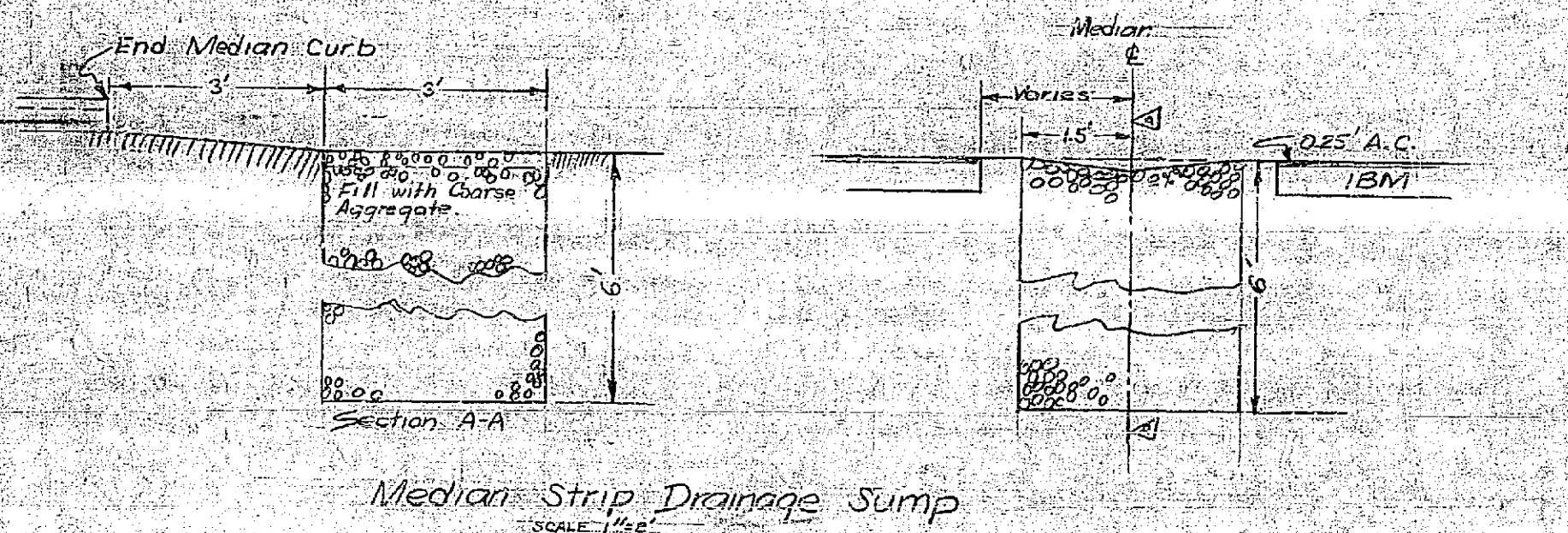
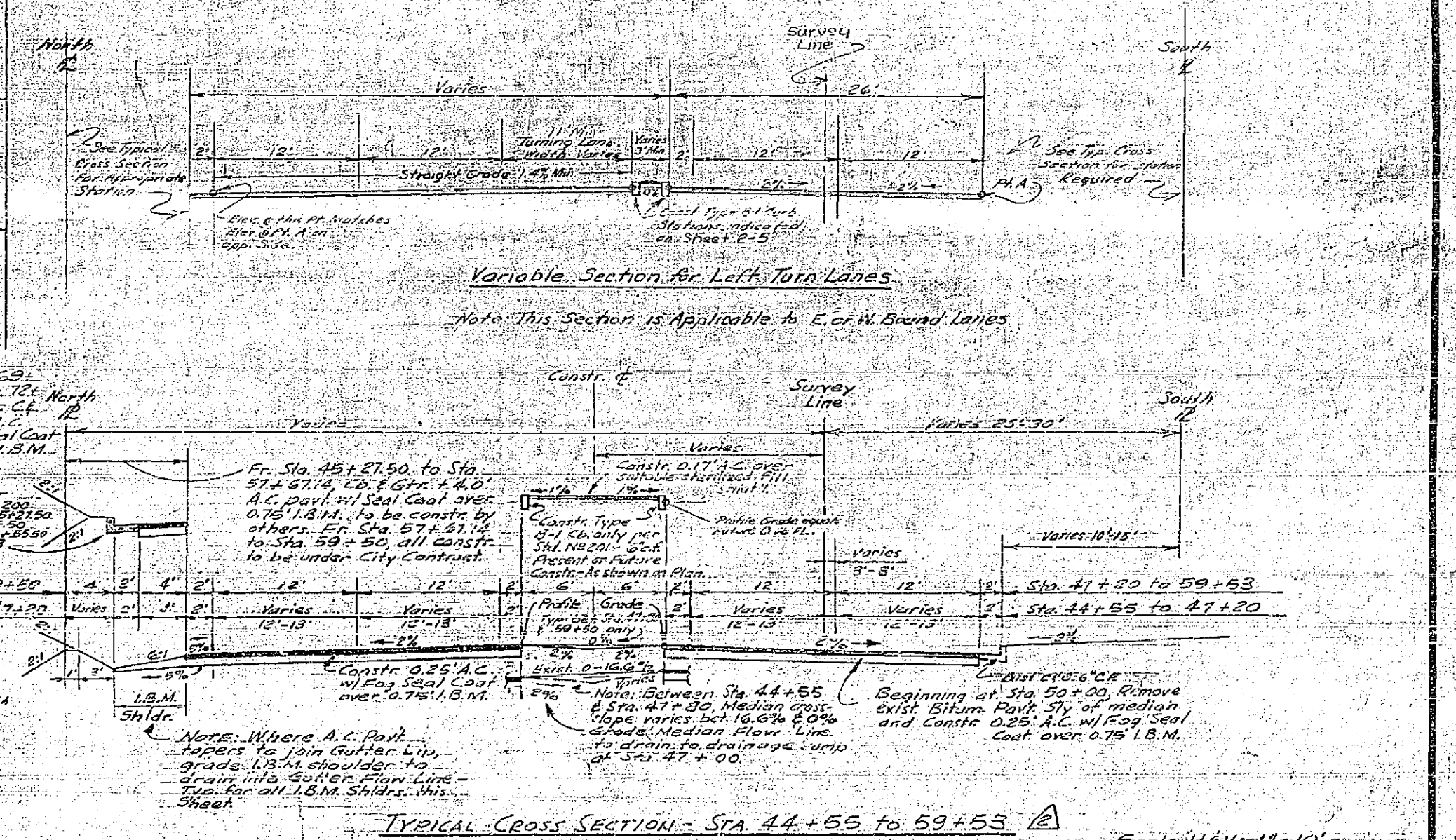
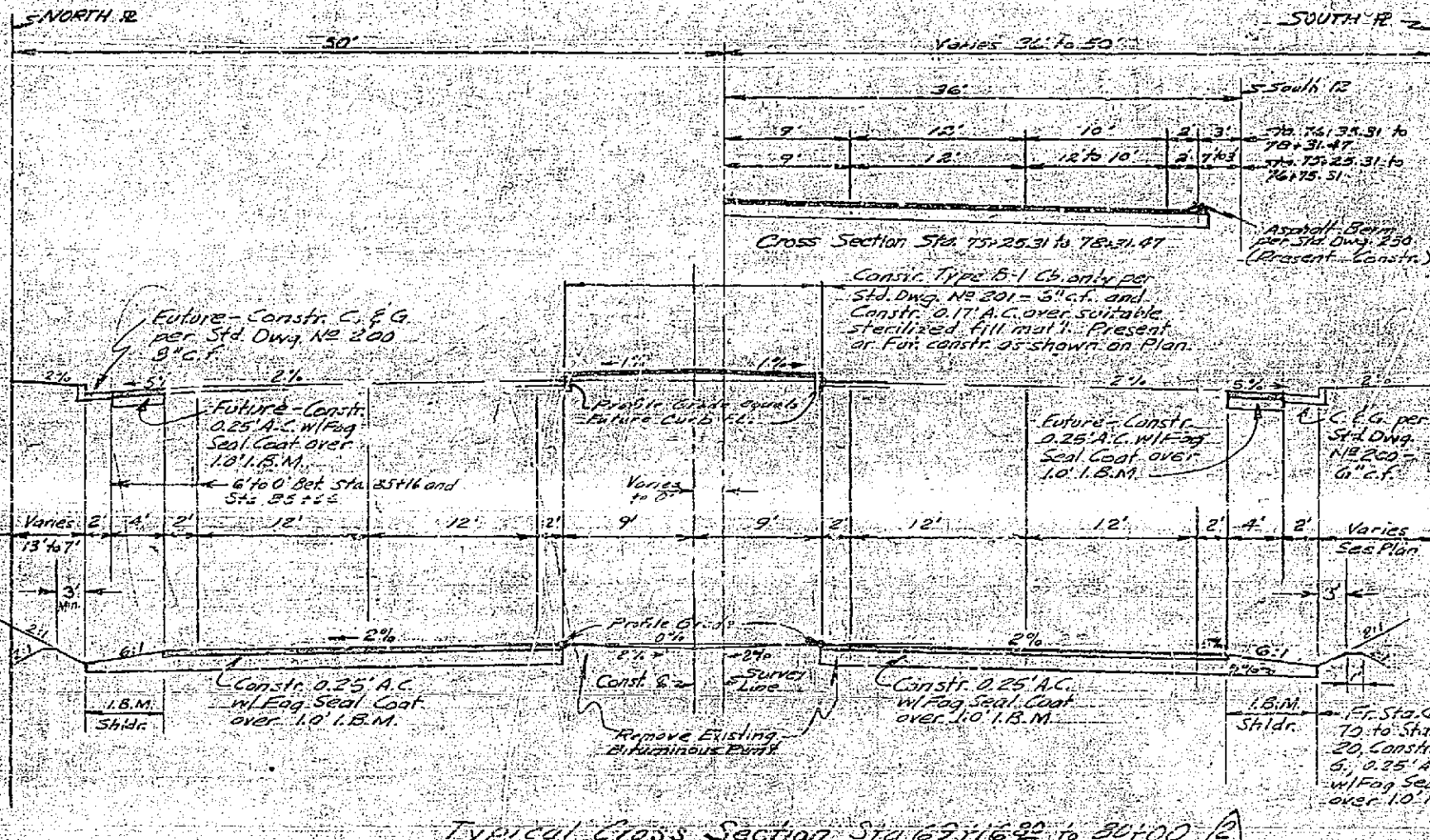
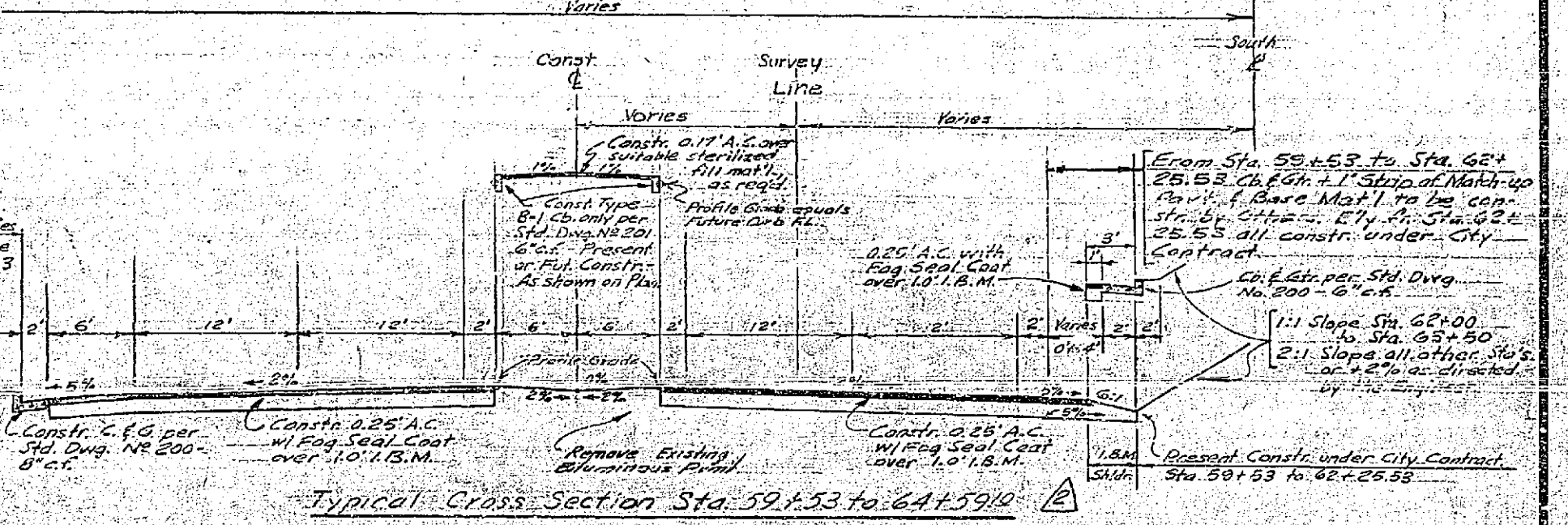
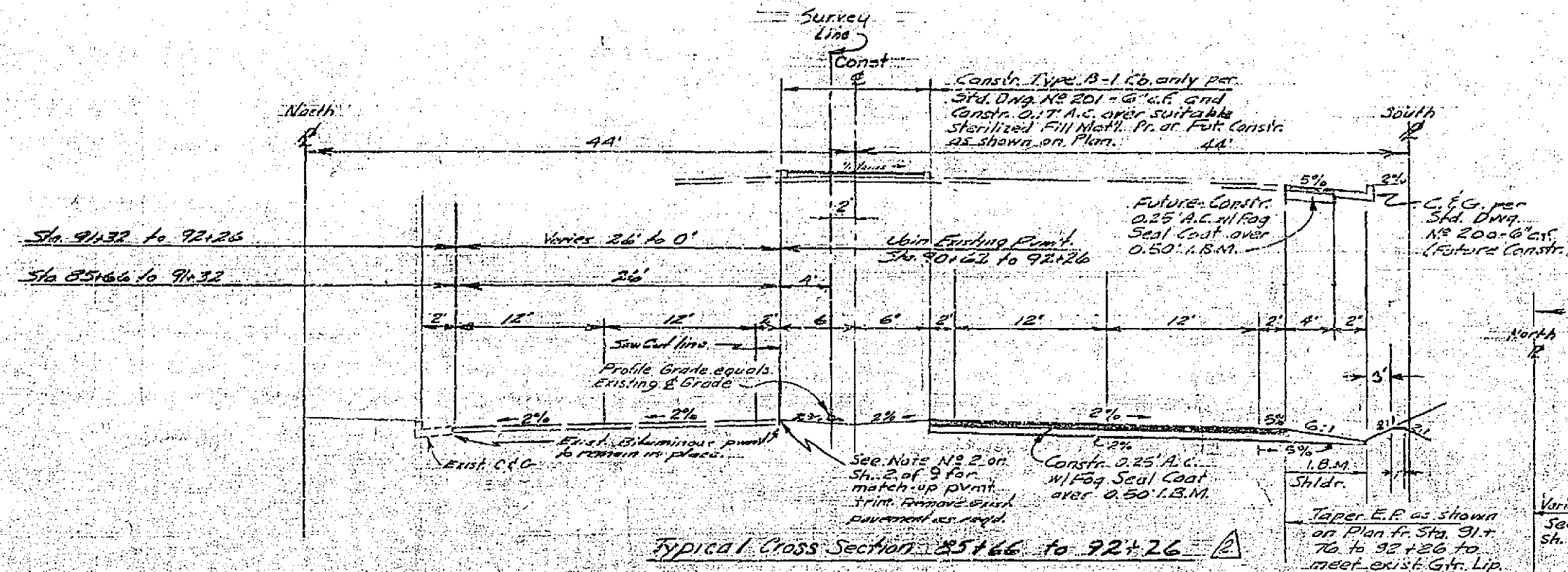
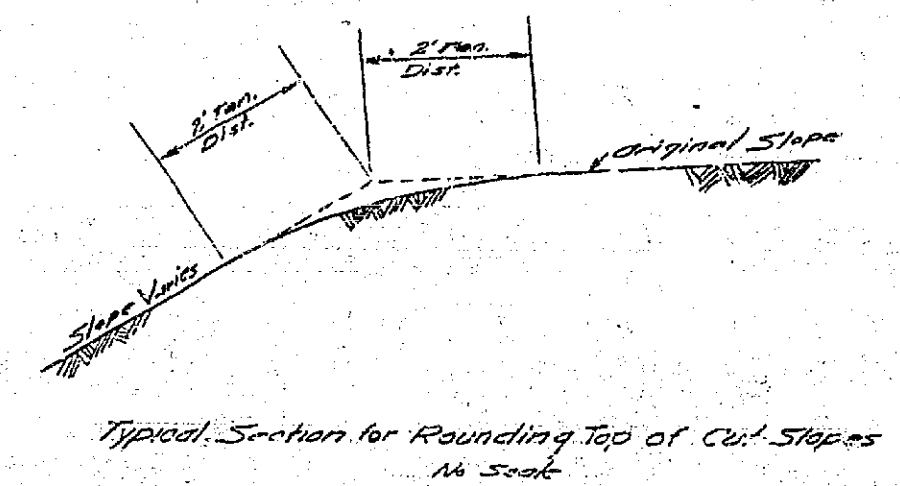
Scale H & V: 1" = 10'

PLAN

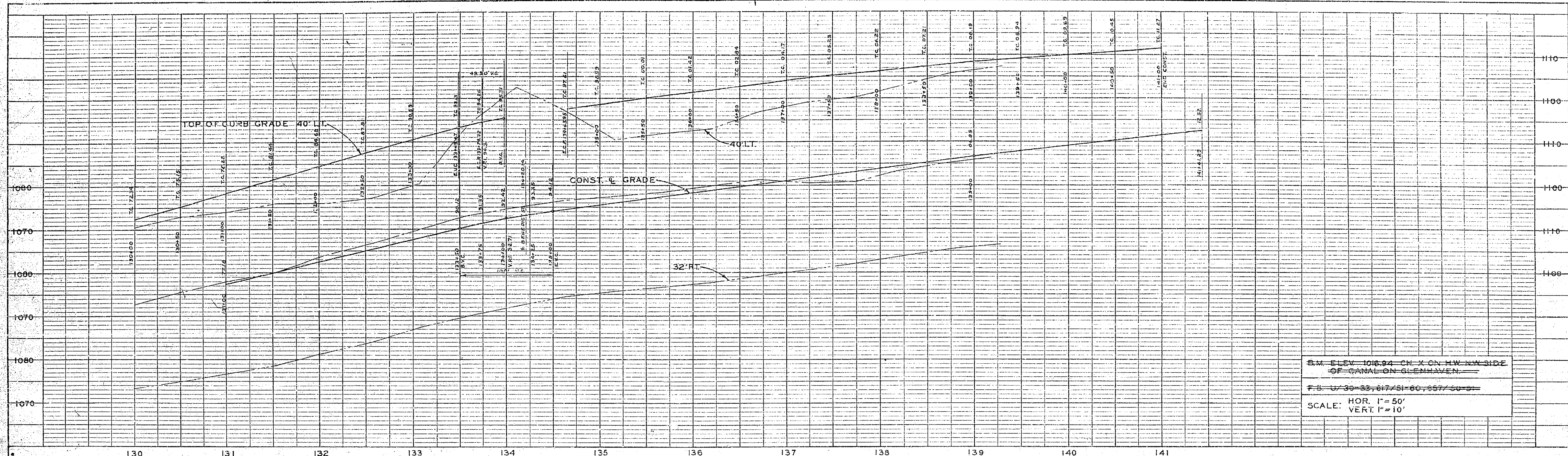
Approved by: <i>[Signature]</i> Date: 9/1/61 Director of Public Works	PLAN AND PROFILE CEMETERY DRAINAGE REVISION
Recommended by:	CENTRAL AVE. WIDENING
Design: CFF Drawn: CFF Checked: <i>[Signature]</i>	Sketch R-112/1 CFF August, 1961



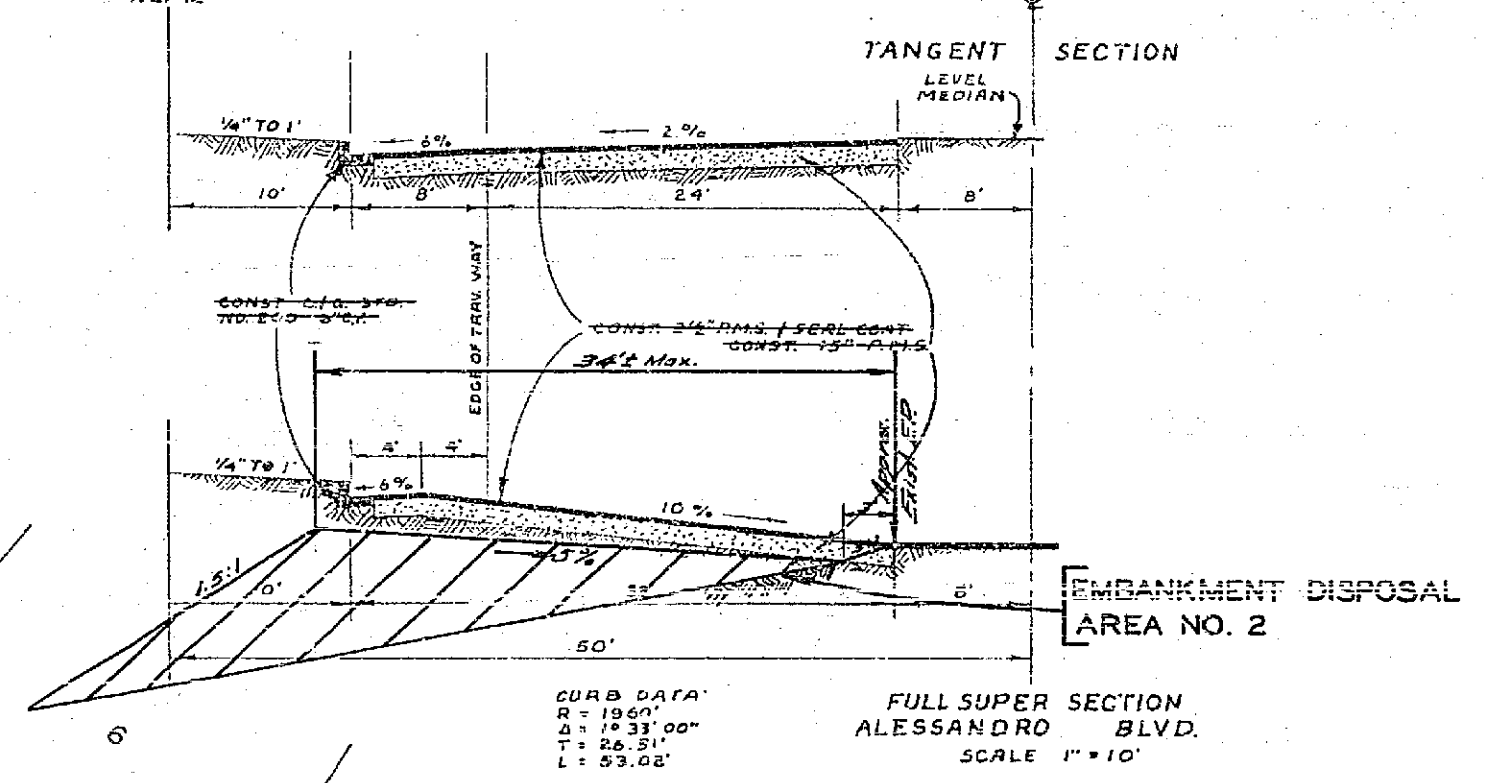
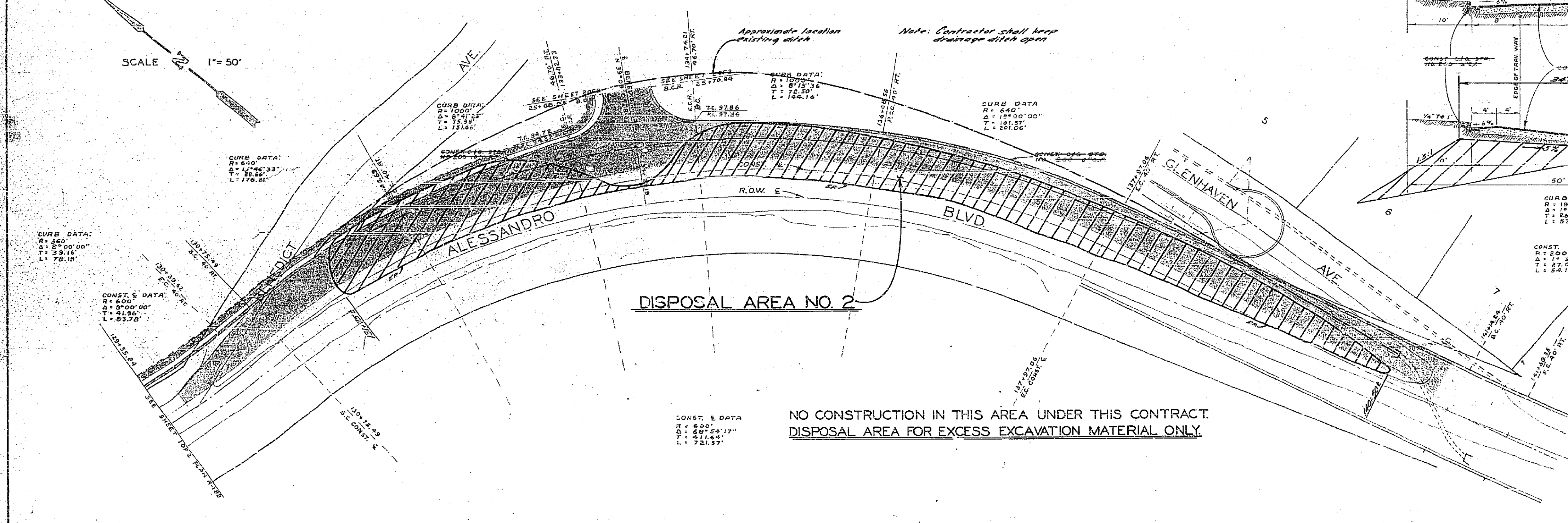
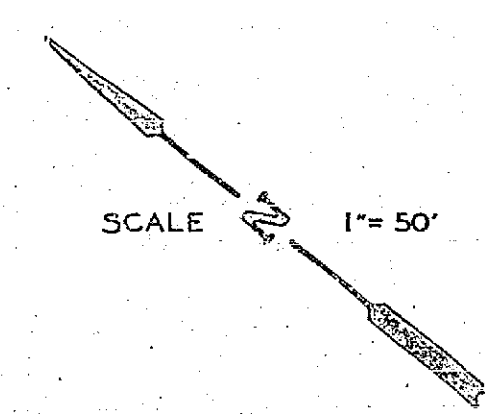
REVISIONS			CITY OF RIVERSIDE CALIFORNIA DEPARTMENT OF PUBLIC WORKS	
MARK	DATE	DESCRIPTION	MAJOR CITY STREETS PROJ. NO. 03	
Δ	5-20-01	General Revision per Item 1000 RM 100 CDD 10/3/00	CENTRAL AVE. WIDENING FROM A.T. & S.F. UNDERPASS TO 1320'± ELY of VICTORIA AVE.	
DESIGNED BY <i>CLM</i>		CHECKED BY <i>CLM</i>	APPROVED BY <i>[Signature]</i>	R-112 SHEET 1 OF 3
DRAWN BY B. Low			DIRECTOR OF PUBLIC WORKS	
RECOMMENDED BY <i>[Signature]</i>		ASSISTANT CITY ENGINEER	DATE Nov. 29, 1900	



REVISIONS		CITY OF RIVERSIDE, CALIFORNIA DEPARTMENT OF PUBLIC WORKS
MARK	DATE	
Δ	8-21-01	MAJOR CITY STREETS PROJ. NO. 103
Δ	8-21-01	CENTRAL AVE. WIDENING FROM
		A.T. & S.F. UNDERPASS TO
		1320' ELY OF VICTORIA AVE.
DESIGNED BY	CHECKED BY	APPROVED BY
DRAWN BY		DIRECTOR OF PUBLIC WORKS
RECOMMENDED BY	ASSISTANT CITY ENGINEER	R-112
		DATE: JUN 27 1990 SHEET 6 OF 8



B.M. ELEV. 108.84 CH. X ON HW. RW. SIDE OF CANAL ON GLENHAVEN
 F.S. 07-30-33, 617-51-60, 657-60-31
 SCALE: HOR. 1"=50'
 VERT. 1"=10'

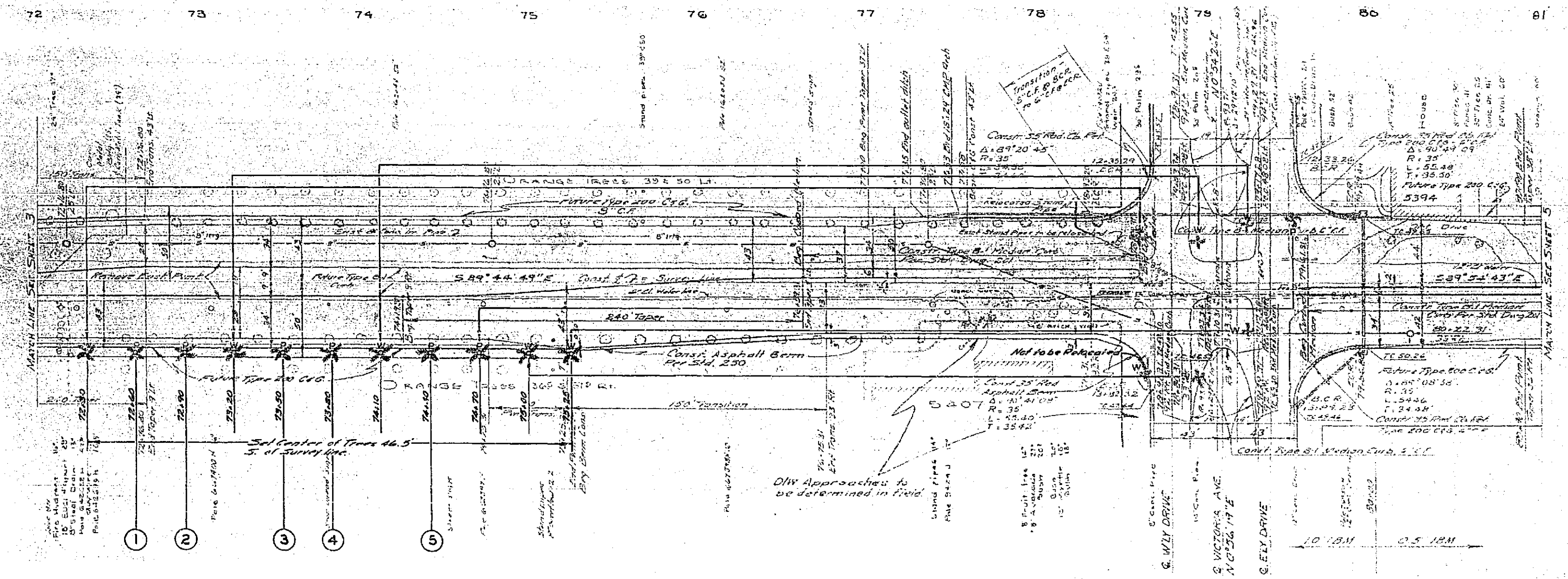
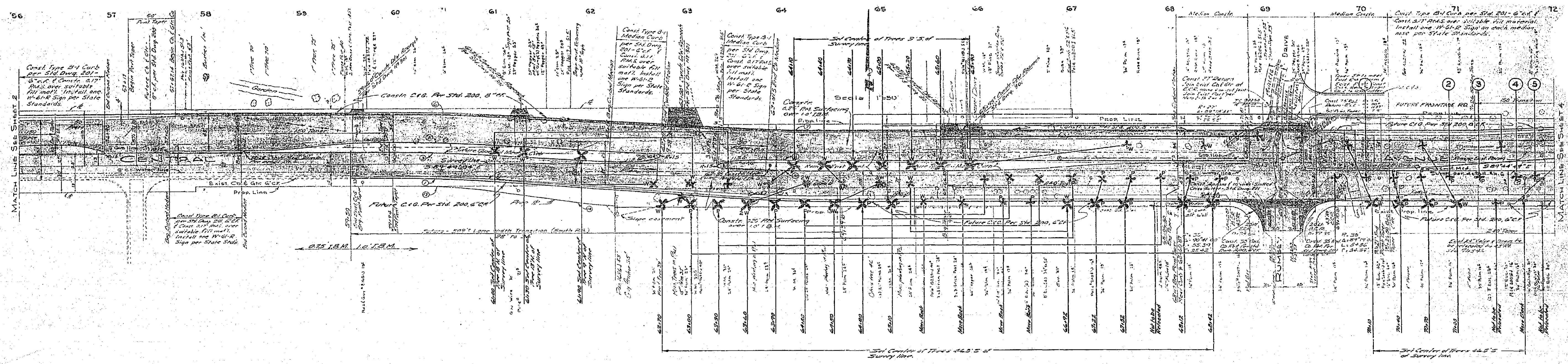


REVISIONS			CITY OF RIVERSIDE CALIFORNIA DEPARTMENT OF PUBLIC WORKS MAJOR CITY STREETS PROJ. NO. 103 CENTRAL AVE. WIDENING FROM A.T.&S.F. UNDERPASS TO 1320' ELY OF VICTORIA AVE. DISPOSAL AREA NO. 2
MARK	DATE	DESCRIPTION	

DESIGNED BY <i>RM</i>	CHECKED BY <i>EP</i>	APPROVED BY <i>SM</i> DIRECTOR OF PUBLIC WORKS	R-112
RECOMMENDED BY <i>RM</i>	ASSISTANT CITY ENGINEER	DATE <i>12/12/41</i>	

PROJECT	NO. 103
DATE	12/12/41
BY	RM
CHECKED BY	EP
APPROVED BY	SM

PLAN	NO. 103
DATE	12/12/41
BY	RM
CHECKED BY	EP
APPROVED BY	SM



LEGEND
 W = WASHINGTONIA ROBUSTA
 P = PHOENIX CANARIENSIS

APPROVED: *Edgar P. ...*
 FOR PARK & RECREATION DIRECTOR DATE

REVISIONS			CITY OF RIVERSIDE CALIFORNIA DEPARTMENT OF PUBLIC WORKS
MARK	DATE	DESCRIPTION	
			MAJOR CITY STREETS PROJ. NO. 103 CENTRAL AVE. WIDENING FROM AT. & S.F. UNDERPASS TO 1320 th ELY OF VICTORIA AVE. PALM TREE RELOCATION PLAN
DESIGNED BY	DHB	CHECKED BY	APPROVED BY
DRAWN BY	RM		<i>[Signature]</i> DIRECTOR OF PUBLIC WORKS
RECOMMENDED BY	<i>[Signature]</i>	ASSISTANT CITY ENGINEER	DATE: April 11, 1941

R-112

Sheet 1 of 2