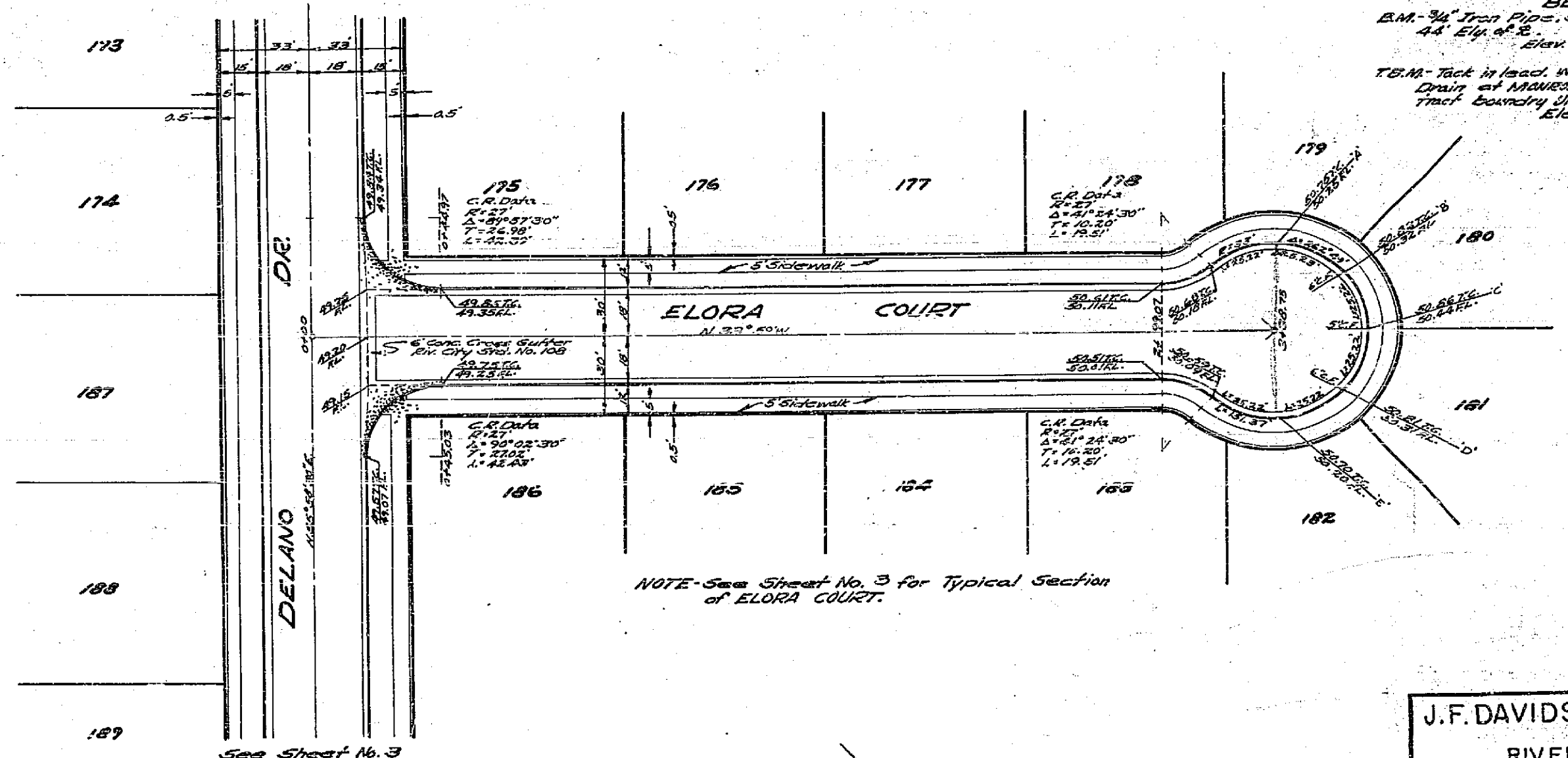
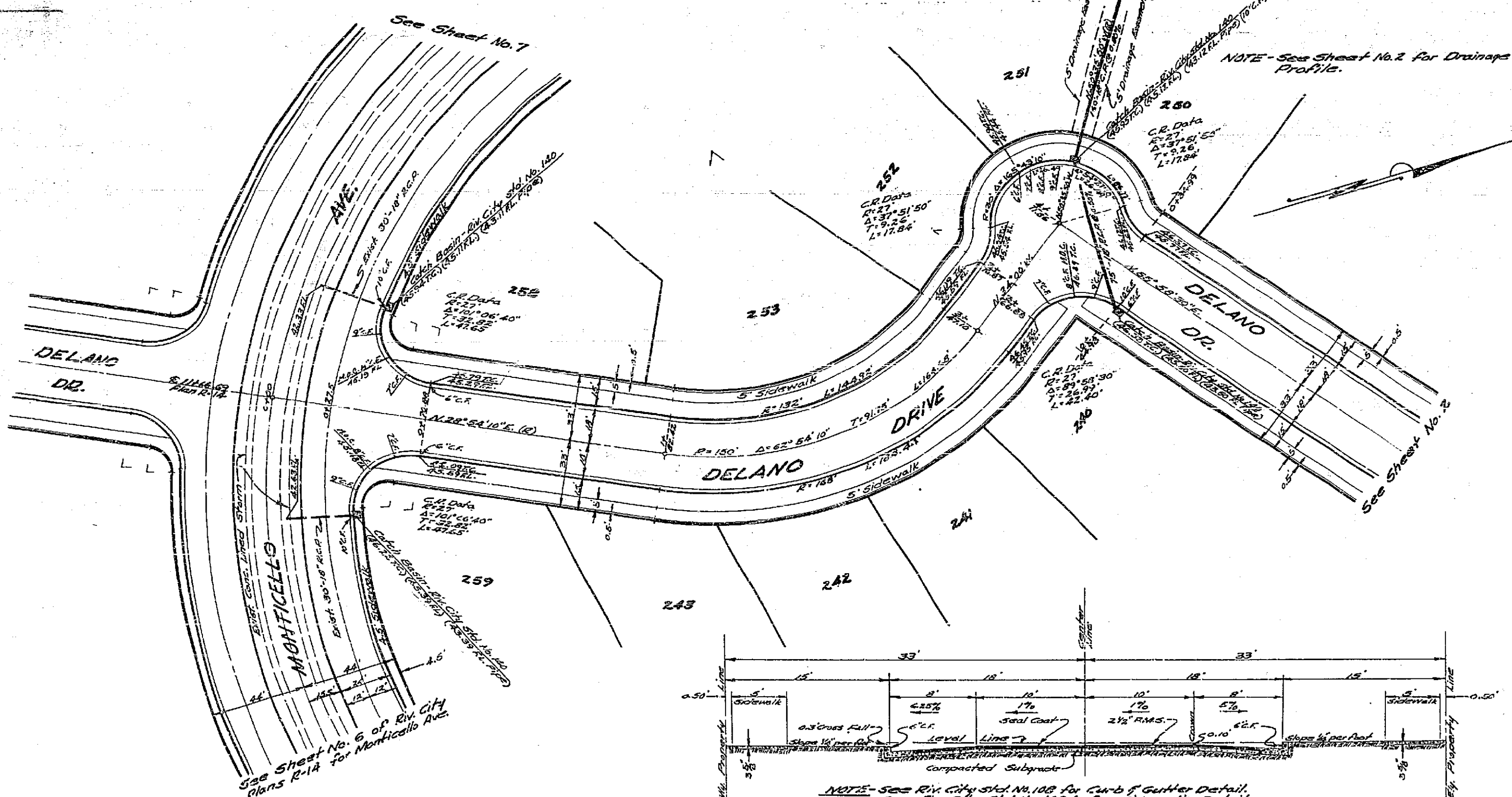
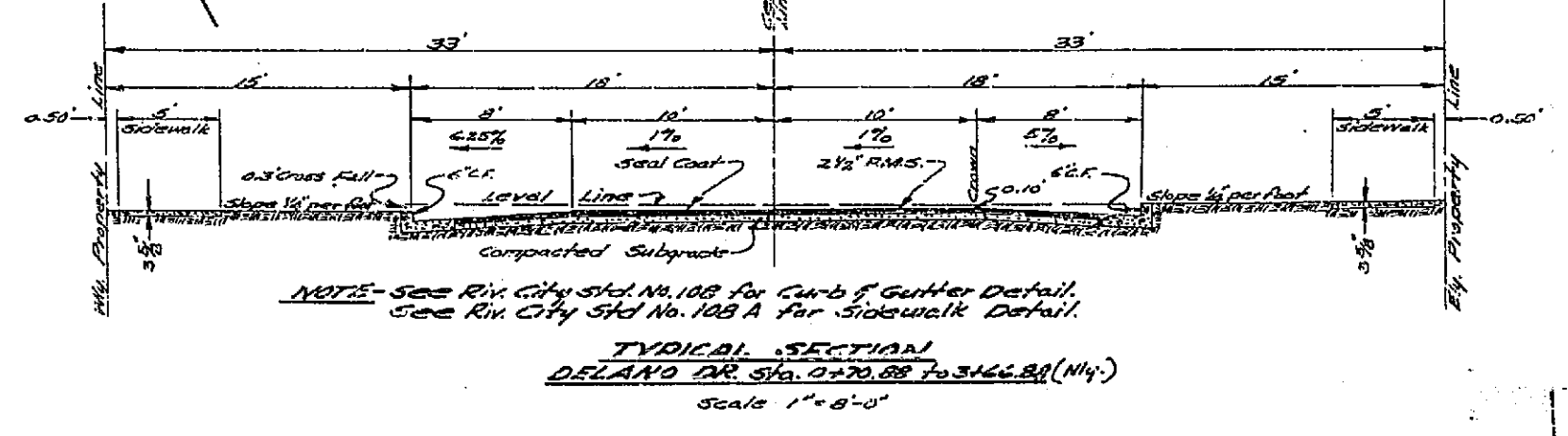


NOTE: Place Catch Basins 2' From Ends Of Curb Returns.



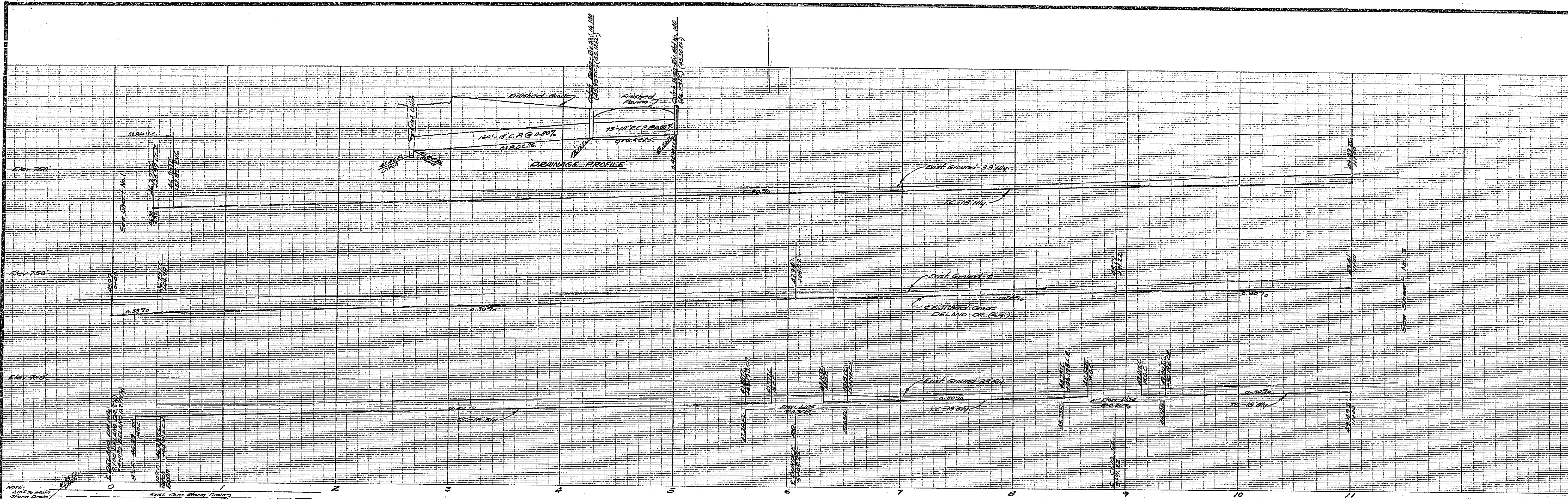
BENCH MARK  
B.M. 1/4" Iron Pipe, 374.71' 100 MONTICELLO AVE.  
44' Ely. of 2  
Elev. 747.99  
E.M. 1/4" Iron Pipe, 374.71' 100 MONTICELLO AVE.  
44' Ely. of 2  
Elev. 747.99  
E.M. 1/4" Iron Pipe, 374.71' 100 MONTICELLO AVE.  
44' Ely. of 2  
Elev. 747.99

STATIONS ON 2	CHORD	DEFLECTION 2
101.42 EC 21.00	17.57	3 21' 25"
102.42 EC 21.00	17.57	3 21' 25"
103.42 EC 21.00	17.57	3 21' 25"
104.42 EC 21.00	17.57	3 21' 25"
105.42 EC 21.00	17.57	3 21' 25"
106.42 EC 21.00	17.57	3 21' 25"
107.42 EC 21.00	17.57	3 21' 25"
108.42 EC 21.00	17.57	3 21' 25"
109.42 EC 21.00	17.57	3 21' 25"
110.42 EC 21.00	17.57	3 21' 25"



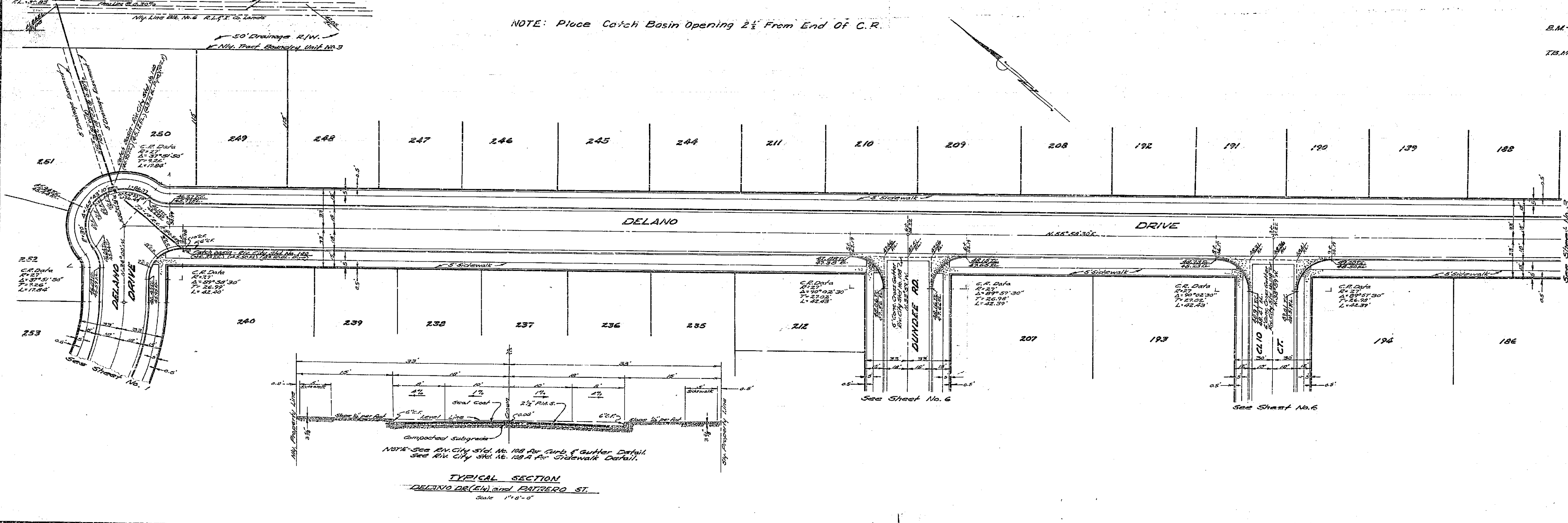
J.F. DAVIDSON-CIVIL ENGINEER  
RIVERSIDE, CALIFORNIA  
APPROVED BY *[Signature]* DATE 1-1-57  
CITY OF RIVERSIDE, CALIFORNIA  
DEPARTMENT OF PUBLIC WORKS  
**STREET PLAN & PROFILE**  
**DELANO DR. & ELORA CT.**  
VILLA D'ESTE UNIT No. 3  
HORIZ. SCALE 1"=40' VERT. SCALE 1"=8'  
APPROVED BY *[Signature]* NO. R-113  
Director of Public Works  
DATE 1-1-57 SHEET 1 OF 7





NOTE: Place Catch Basin Opening 2 1/2' From End Of C.R.

BENCH MARK  
 B.M. - 3/4" I.P. STA. 7+02.20 MONTICELLO NE., 44'  
 Elev. of center line  
 Elev. 747.91'  
 I.T.B.M. - Take in steel W/ concrete base of storm  
 drain of Manure pit crossing, 3' S. of W/ Tract  
 Boundary south  
 Elev. 753.77'



TYPICAL SECTION  
 DELANO DR (E/W) and PATZERO ST.  
 Scale 1" = 4'-0"

J. F. DAVIDSON - CIVIL ENGINEER  
 R.E. No. 862  
 RIVERSIDE, CALIFORNIA  
 APPROVED BY: *[Signature]* DATE 5-1-57

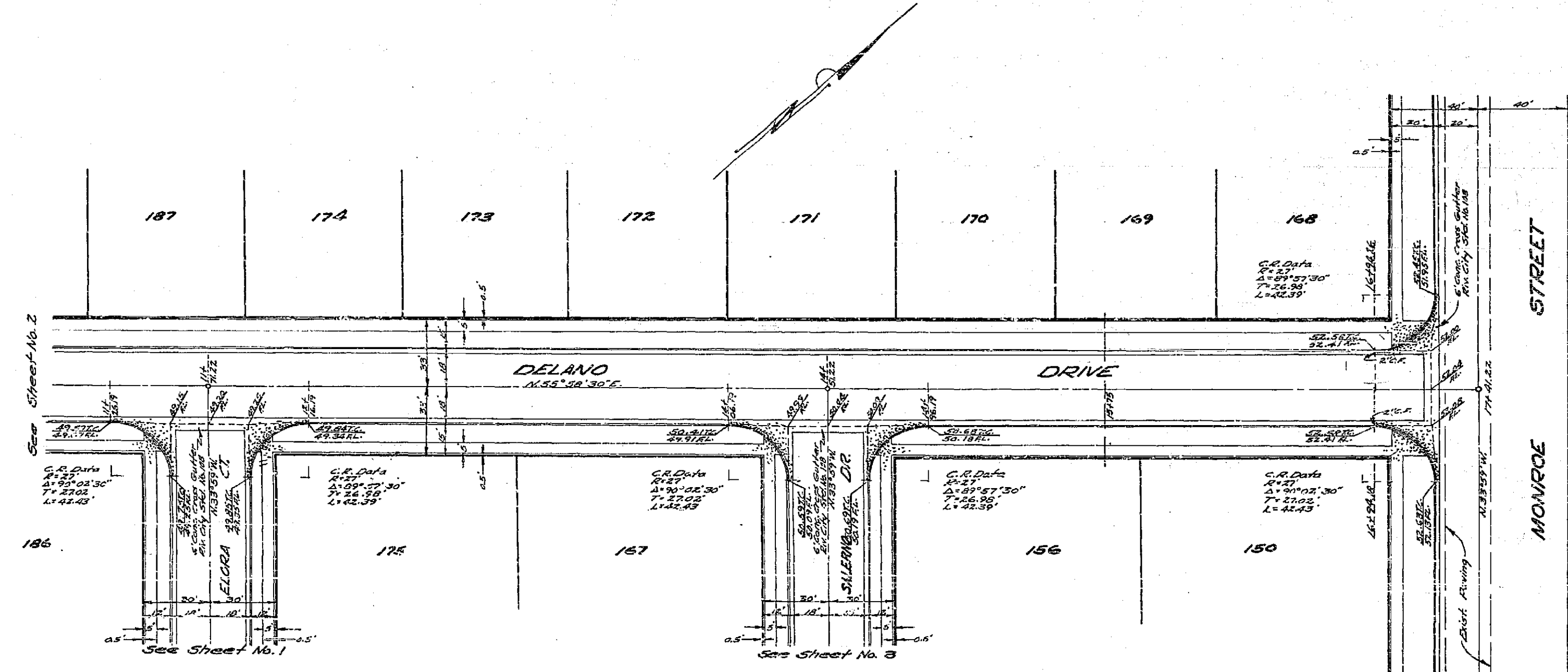
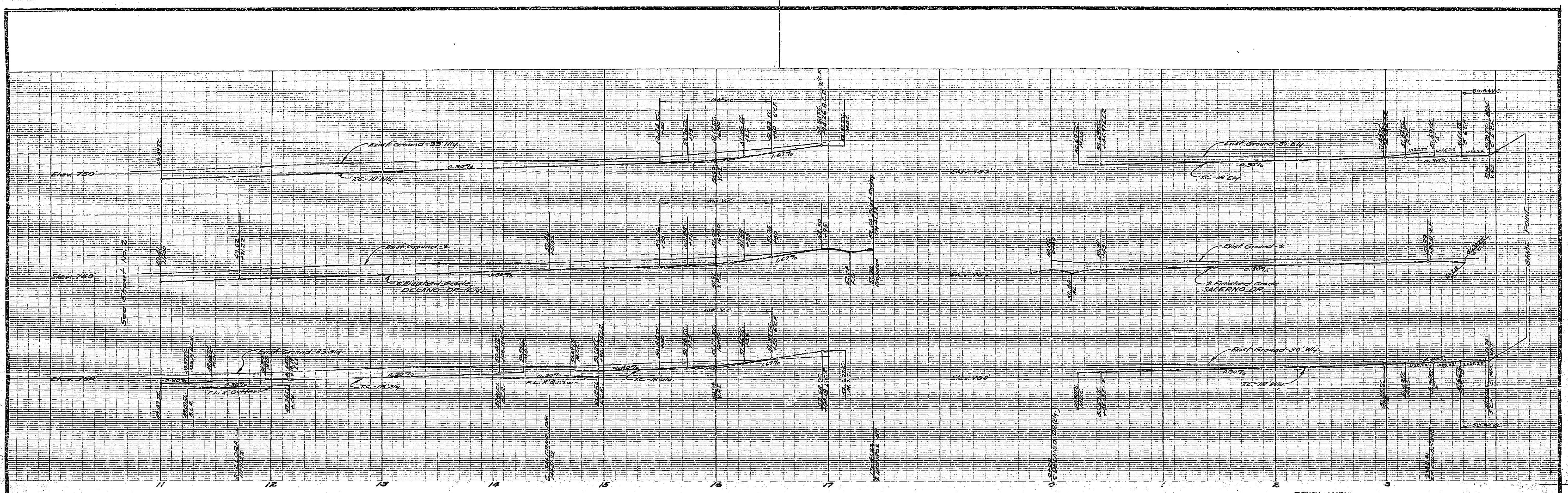
CITY OF RIVERSIDE, CALIFORNIA  
 DEPARTMENT OF PUBLIC WORKS

**STREET PLAN & PROFILE**  
 DELANO DRIVE

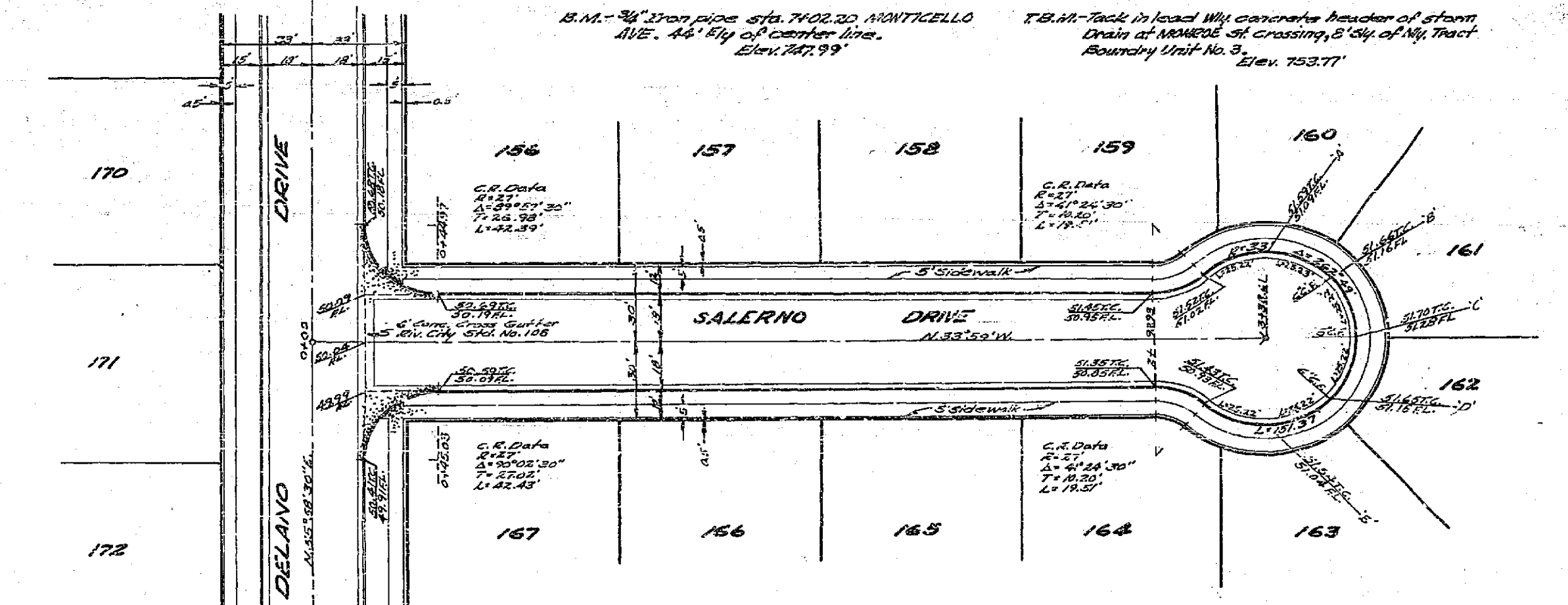
VILLA 'ESTE UNIT No. 3  
 HORIZ. SCALE 1" = 40' VERT. SCALE 1" = 4'

APPROVED BY: *[Signature]* NO. R-113  
 Director of Public Works  
 DATE 5-1-57 SHEET 2 OF 2





NOTE - See Sheet No. 2 for Typical Section of DELANO DR. (Ely)



NOTE - See Riv. City Ord. No. 108 for Curb & Gutter Detail. See Riv. City Ord. No. 108 A for Sidewalk Detail. DUNDEE RD., CLIO CT., GLOBE CT. and SALERNO DR. SCALE 1" = 6'-0"

J.F. DAVIDSON - CIVIL ENGINEER  
 R.E. No. 962  
 RIVERSIDE, CALIFORNIA  
 APPROVED BY *[Signature]* DATE 11/27/57

CITY OF RIVERSIDE, CALIFORNIA  
 DEPARTMENT OF PUBLIC WORKS

**STREET PLAN & PROFILE**  
 DELANO DR. & SALERNO DR.

VILLA D'ESTE UNIT No. 3  
 HORIZ. SCALE 1" = 40' VERT. SCALE 1" = 4'

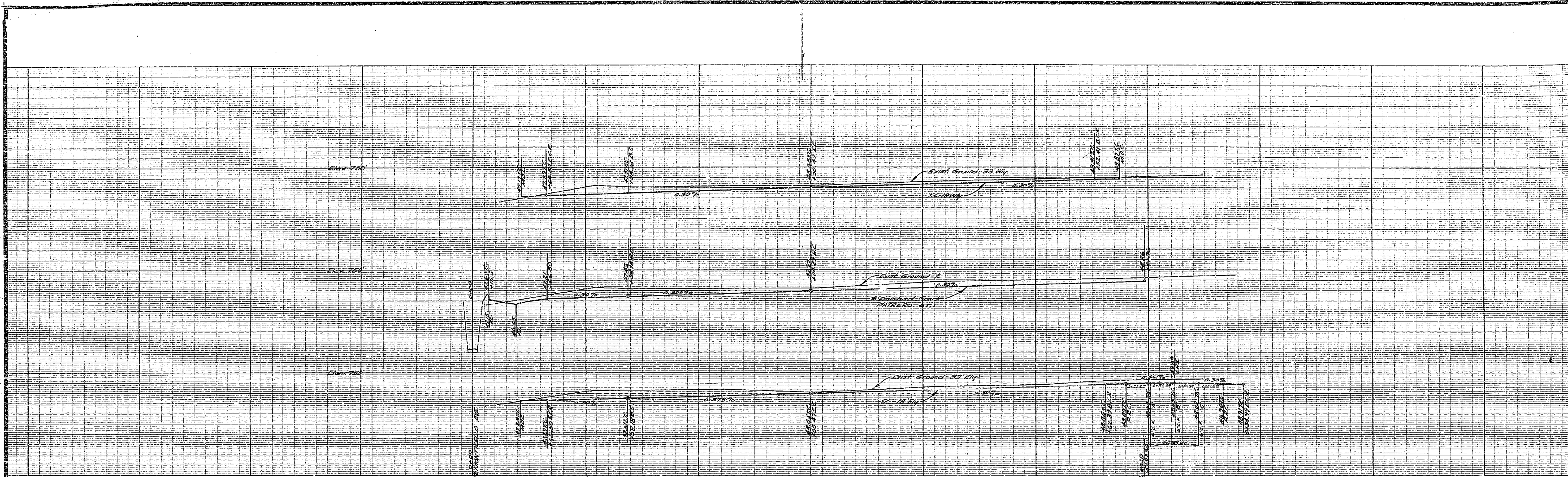
APPROVED BY *[Signature]*  
 Director of Public Works  
 DATE 11/29/57

NO. R-115  
 SHEET 5 OF 7



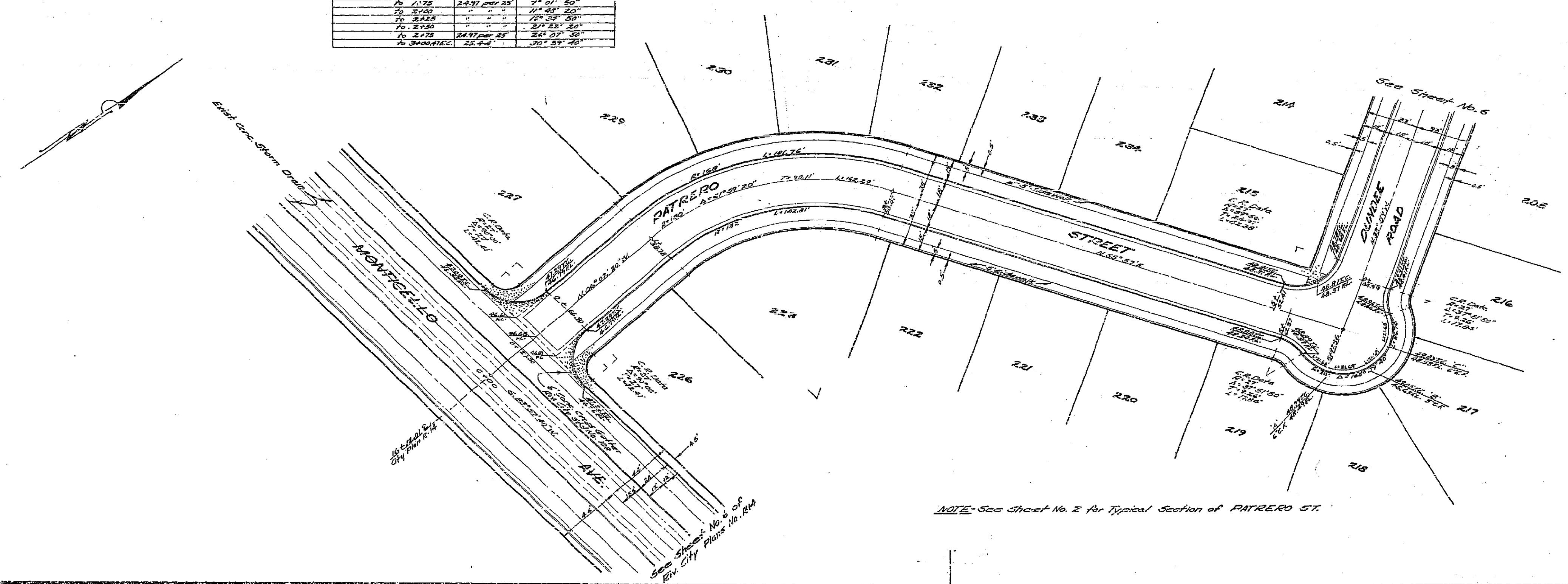






PATRERO STREET		
STATIONS ON S.	CURBS	DEFLECTION A.
1+36.18 B.C.M. 11.50	11.81	0° 12' 30"
" 1+38.18	12.01	" 0' 12' 30"
" 1+40.18	12.21	" 0' 12' 30"
" 1+42.18	12.41	" 0' 12' 30"
" 1+44.18	12.61	" 0' 12' 30"
" 1+46.18	12.81	" 0' 12' 30"
" 1+48.18	13.01	" 0' 12' 30"
" 1+50.18	13.21	" 0' 12' 30"
" 1+52.18	13.41	" 0' 12' 30"
" 1+54.18	13.61	" 0' 12' 30"
" 1+56.18	13.81	" 0' 12' 30"
" 1+58.18	14.01	" 0' 12' 30"
" 1+60.18	14.21	" 0' 12' 30"

BENCH MARK  
 B.M. - 34" I.P., Sta. 7402.20 MONTICELLO AVE., 44' Ely of N.Y.  
 Center line.  
 E.M.: 747.91'  
 T.B.M. Tack in Wall 644 concrete quarter of storm Drain  
 at MONTICELLO ST. crossing, 8' Ely of N.Y. Tract Boundary  
 Unit No. 3.  
 Elev. 753.77'



NOTE - See Sheet No. 2 for Typical Section of PATRERO ST.

J.F. DAVIDSON - CIVIL ENGINEER  
 R.E. No 862  
 RIVERSIDE, CALIFORNIA  
 APPROVED BY *[Signature]* DATE 2-1-52

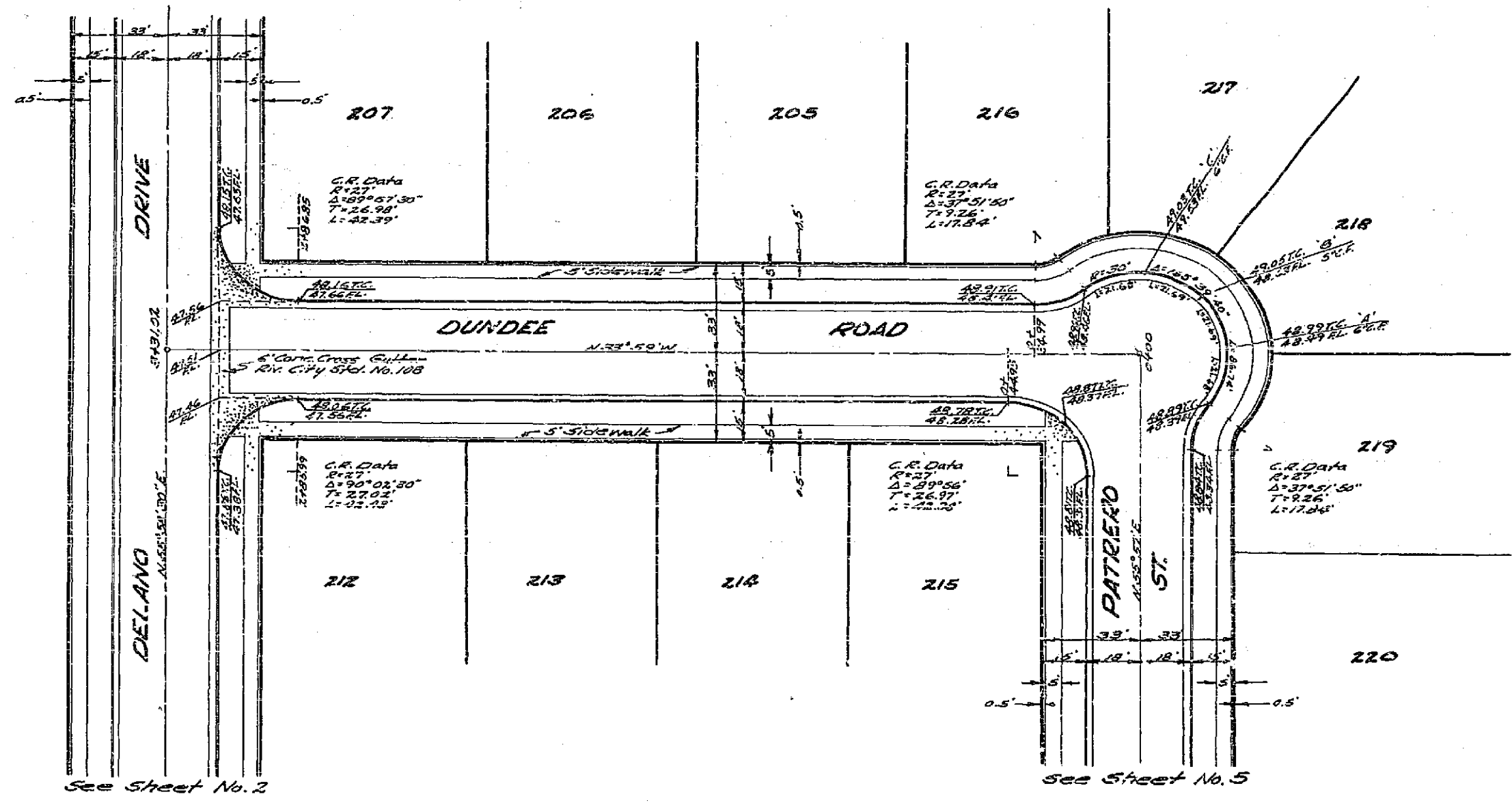
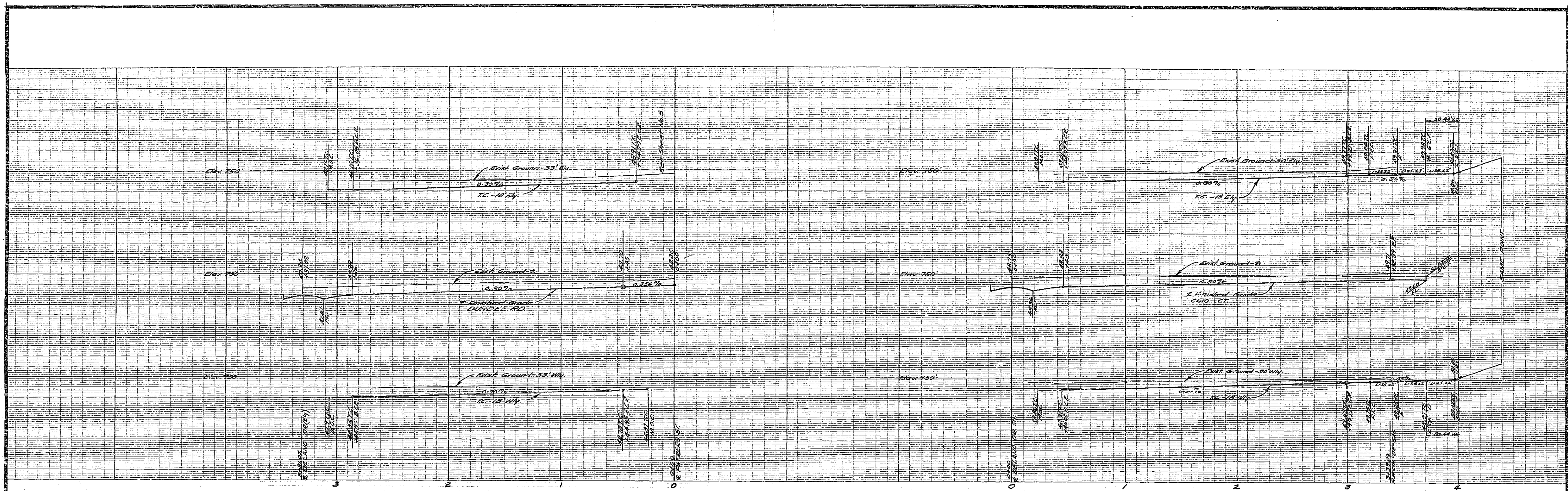
CITY OF RIVERSIDE, CALIFORNIA  
 DEPARTMENT OF PUBLIC WORKS

**STREET PLAN & PROFILE**  
**PATRERO STREET**

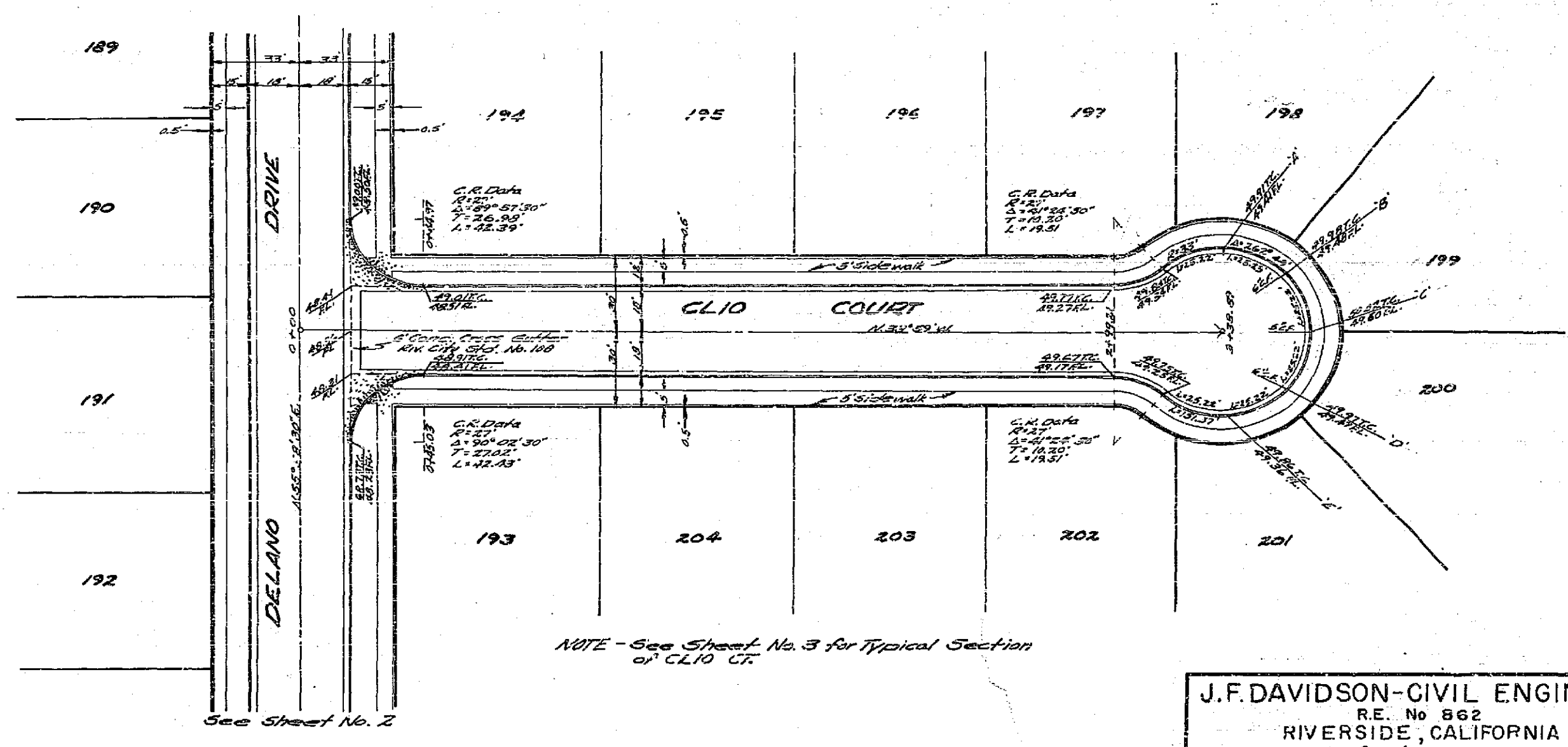
VILLA D'ESTE UNIT No. 3  
 HORIZ. SCALE 1"=40' VERT. SCALE 1"=4'

APPROVED BY *[Signature]* NO. R-113  
 Director of Public Works  
 DATE 12-29-1948 SHEET 5 OF 2





NOTE - See Sheet No. 3 for Typical Section of DUNDEE Rd.



NOTE - See Sheet No. 3 for Typical Section of CLIDO CT.

BENCH MARK  
 B.M. - 24" Iron Pipe with 7402.20 MONTICELLO AVE.  
 4.4' Ely of center line.  
 Elev. 747.99'  
 T.B.M. - Track in lead Wly concrete footer of storm  
 drain at MARQUE St. crossing, 8 Sly of Wly. foot  
 boundary line No. 2.  
 Elev. 753.71'

J.F. DAVIDSON - CIVIL ENGINEER  
 R.E. No. 862  
 RIVERSIDE, CALIFORNIA  
 APPROVED BY *[Signature]* DATE 4-1-57

CITY OF RIVERSIDE, CALIFORNIA  
 DEPARTMENT OF PUBLIC WORKS

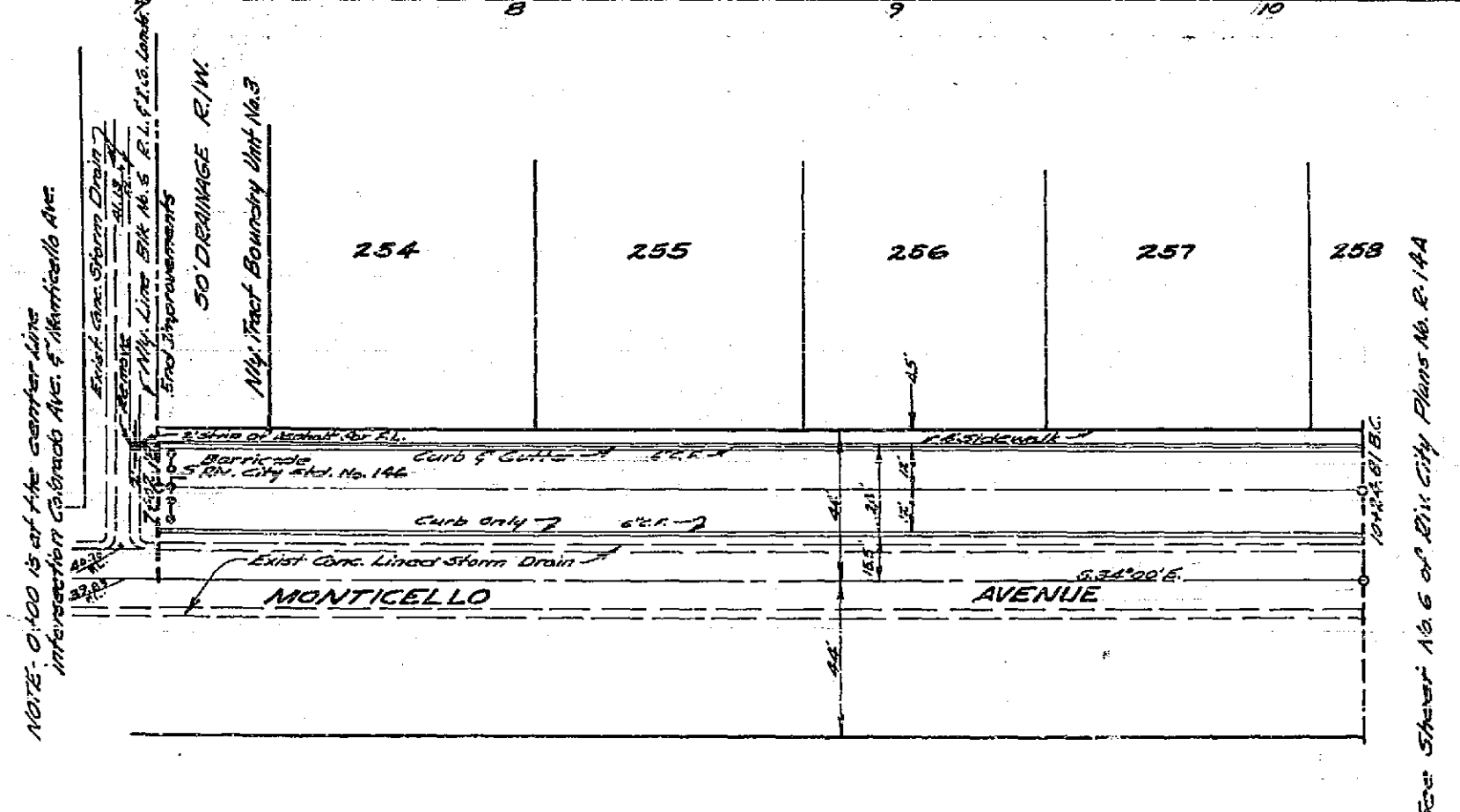
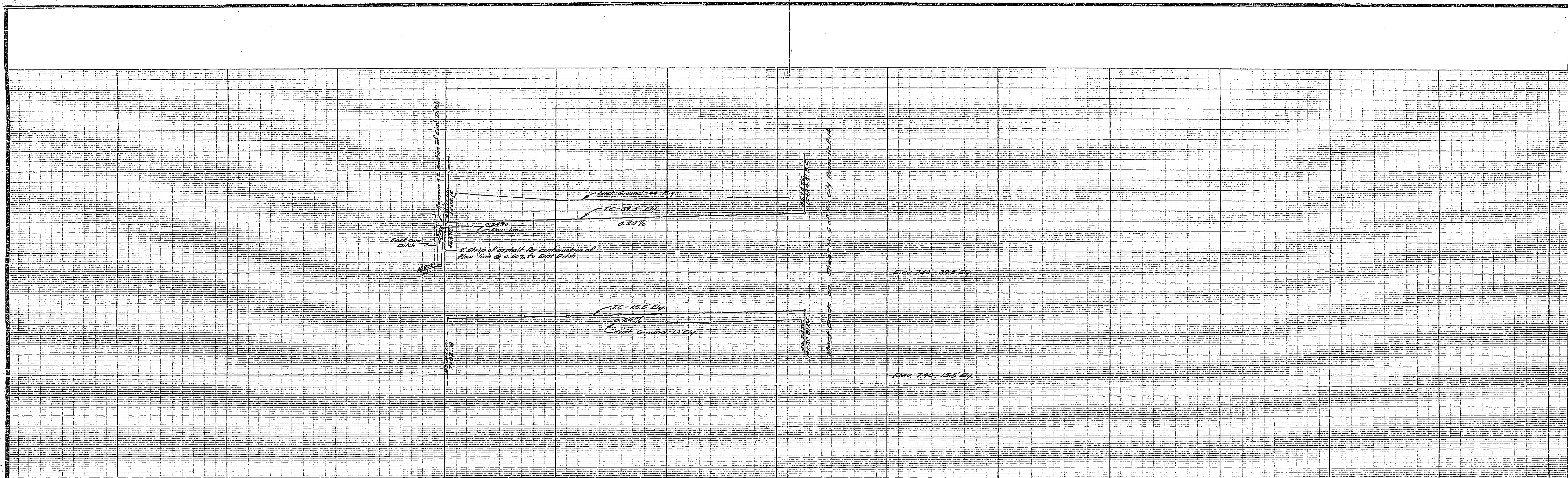
**STREET PLAN & PROFILE**  
**DUNDEE RD. & CLIDO CT.**

VILLA D'ESTE UNIT No. 3  
 HORIZ. SCALE 1" = 40' VERT. SCALE 1" = 4'

APPROVED BY *[Signature]*  
 Director of Public Works  
 DATE 4-19-57

NO. R-113  
 SHEET 2 OF 2





BENCH MARK  
 B.M. - 3/4" Iron Pipe etc. 7402.20 MONTICELLO AVE. 44'  
 City of center line.  
 Elev. 742.99  
 T.B.M. - Tick in road 1/4" concrete header of Storm Drain  
 of AVENUE ST. crossing City of Mt. City Boundary  
 Unit No. 3.  
 Elev. 752.77

NOTE - See Sheet No. 1 of Villa d'Este Unit No. 3, Riv. City Plan No. R-14  
 for Typical Section of MONTICELLO AVENUE.

J.F. DAVIDSON - CIVIL ENGINEER  
 R.E. No. 862  
 RIVERSIDE, CALIFORNIA  
 APPROVED BY *Paul Kapp* DATE 4-27  
 CITY OF RIVERSIDE, CALIFORNIA  
 DEPARTMENT OF PUBLIC WORKS  
 STREET PLAN & PROFILE  
 MONTICELLO AVENUE  
 VILLA D'ESTE UNIT No. 3  
 HORIZ. SCALE 1" = 40' VERT. SCALE 1" = 4'  
 APPROVED BY *J.F. Davidson*  
 Director of Public Works  
 DATE *Ch. 29 1913* NO. R-113  
 SHEET 2 OF 2