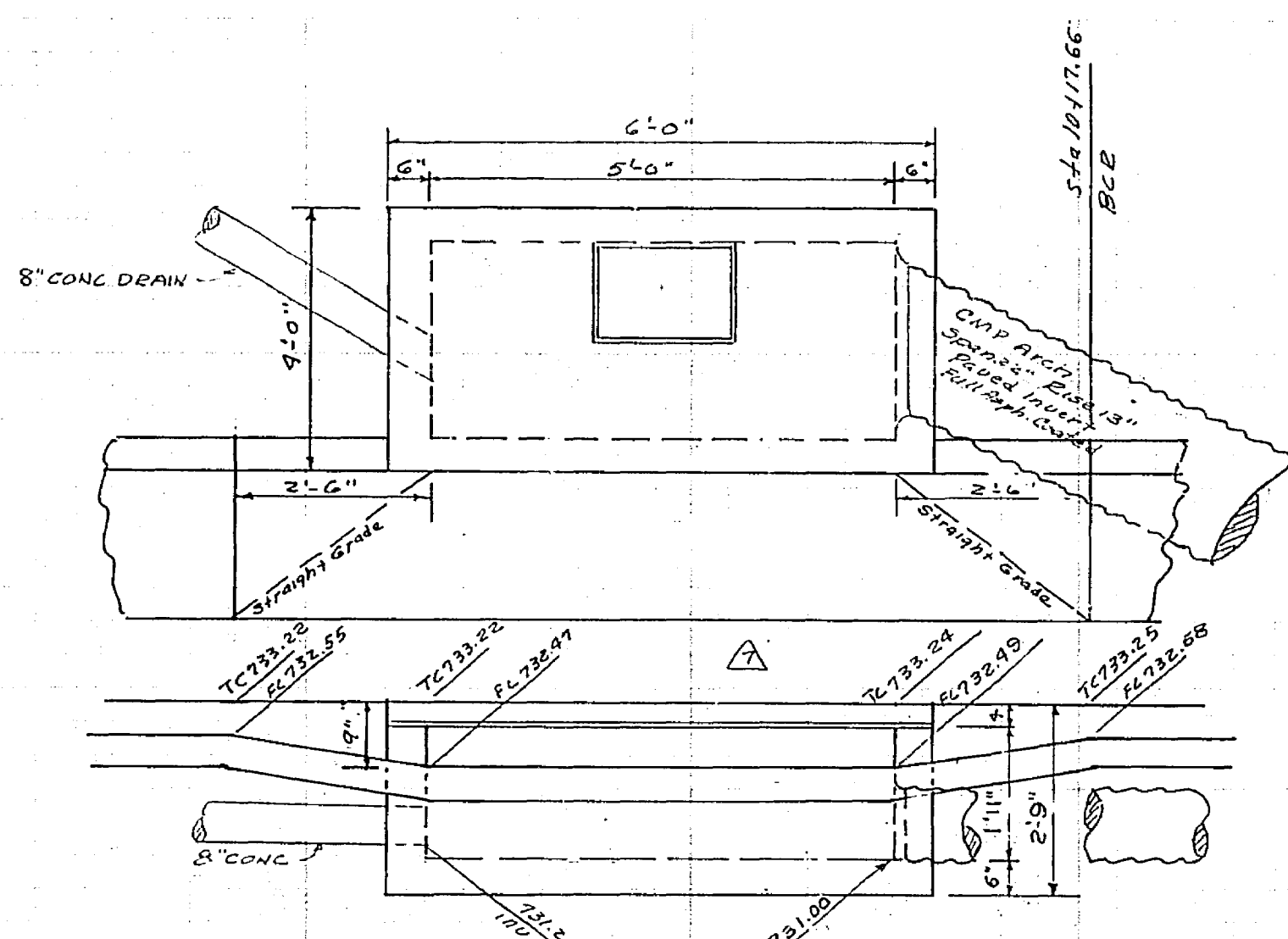
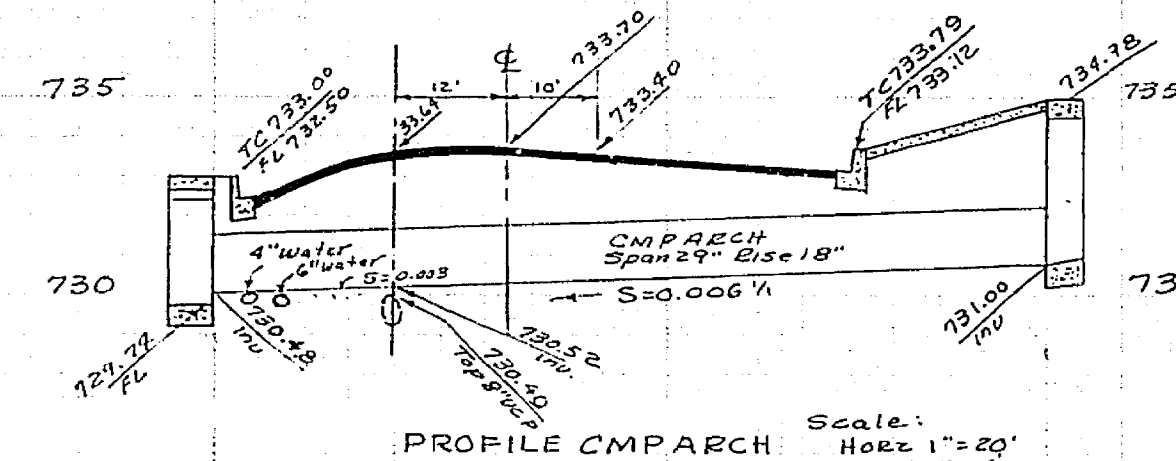


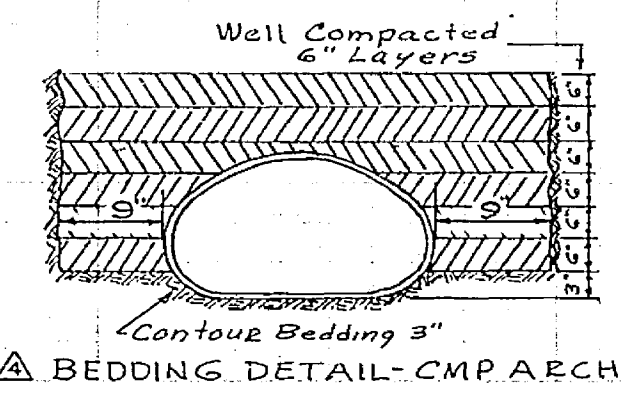
PLAN & PROFILE DETAIL "A"



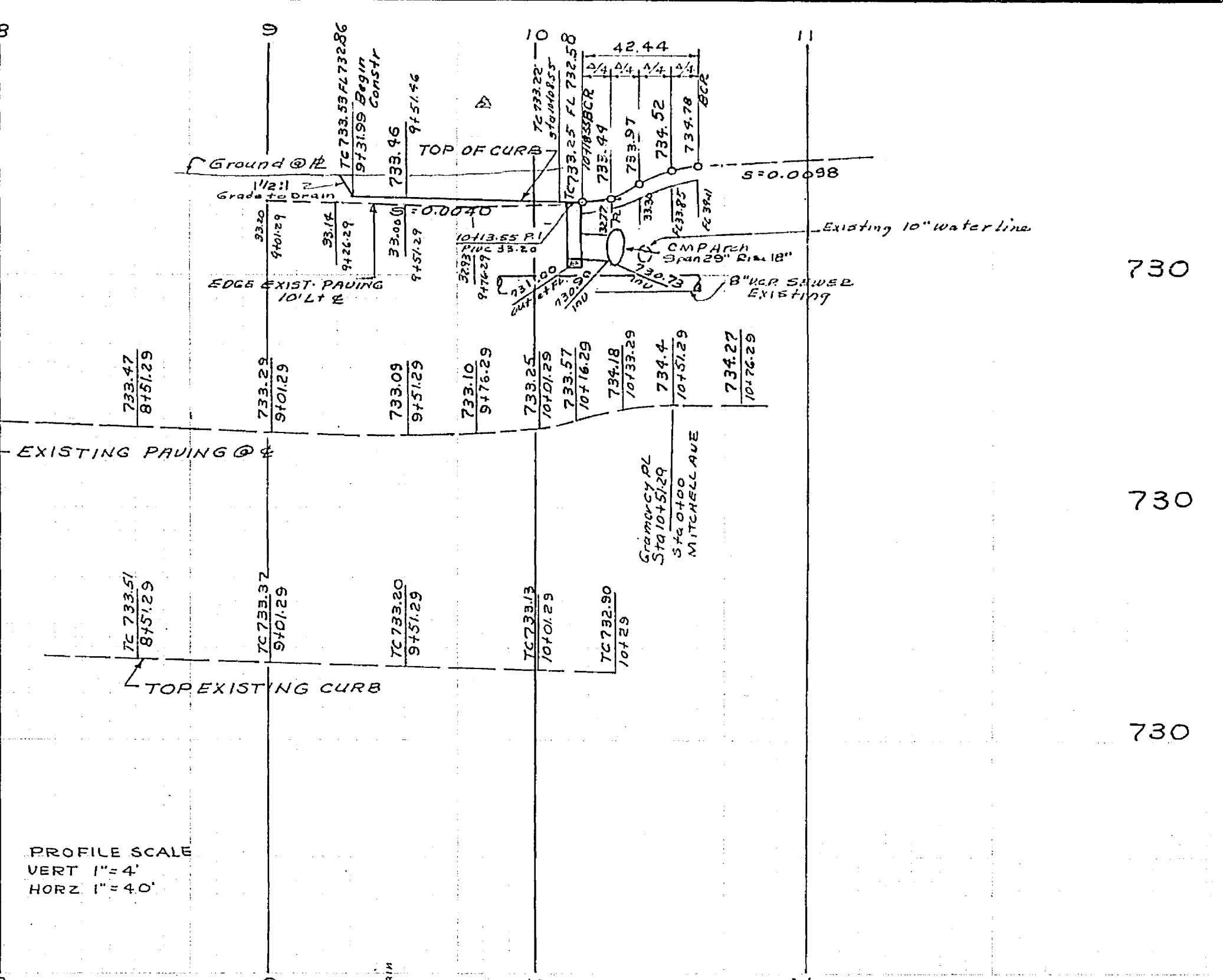
PLAN & PROFILE DETAIL "B"



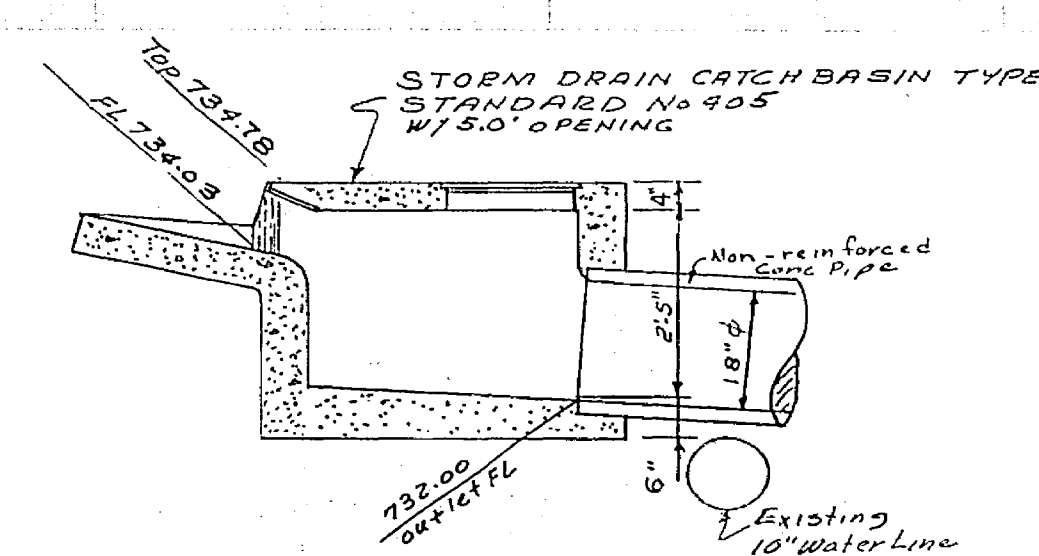
PROFILE CMP ARCH



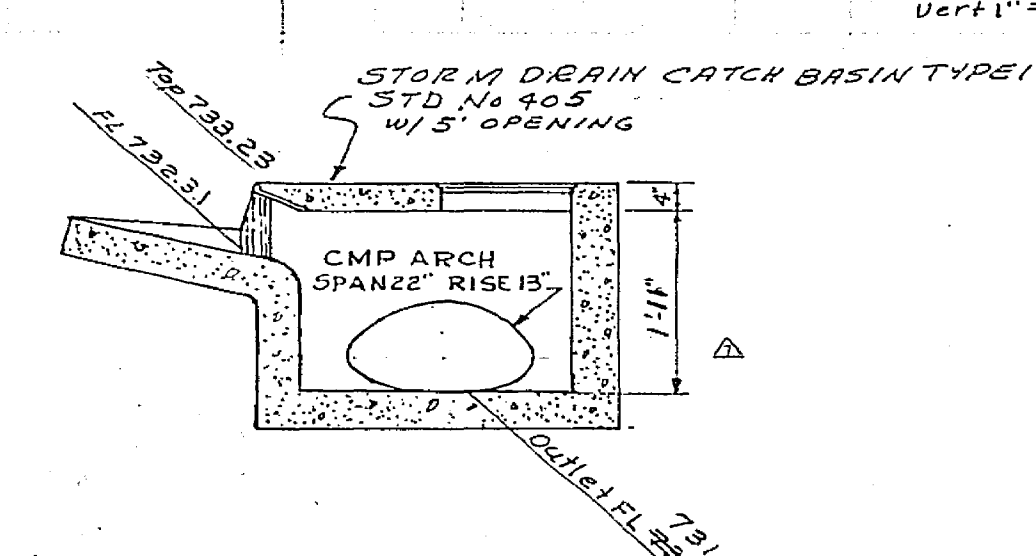
BEDDING DETAIL - CMP ARCH



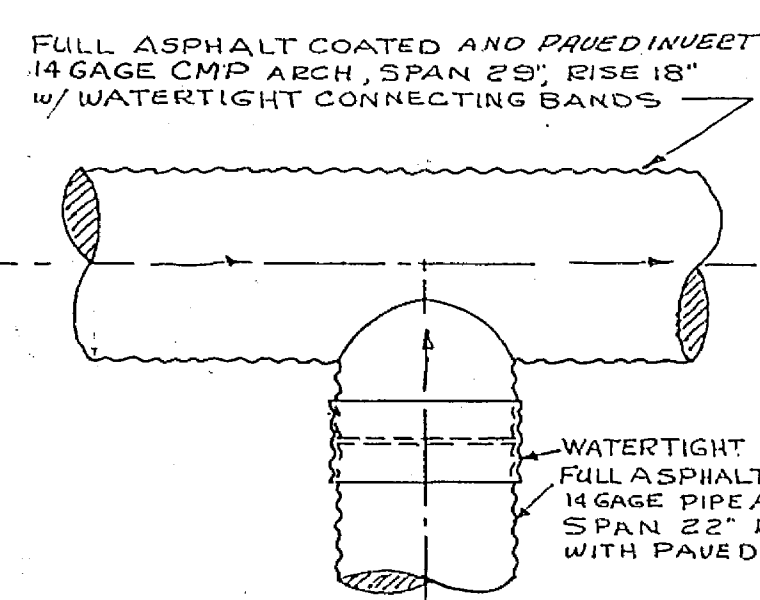
PROFILE SCALE  
VERT 1" = 4'  
HORZ 1" = 40'



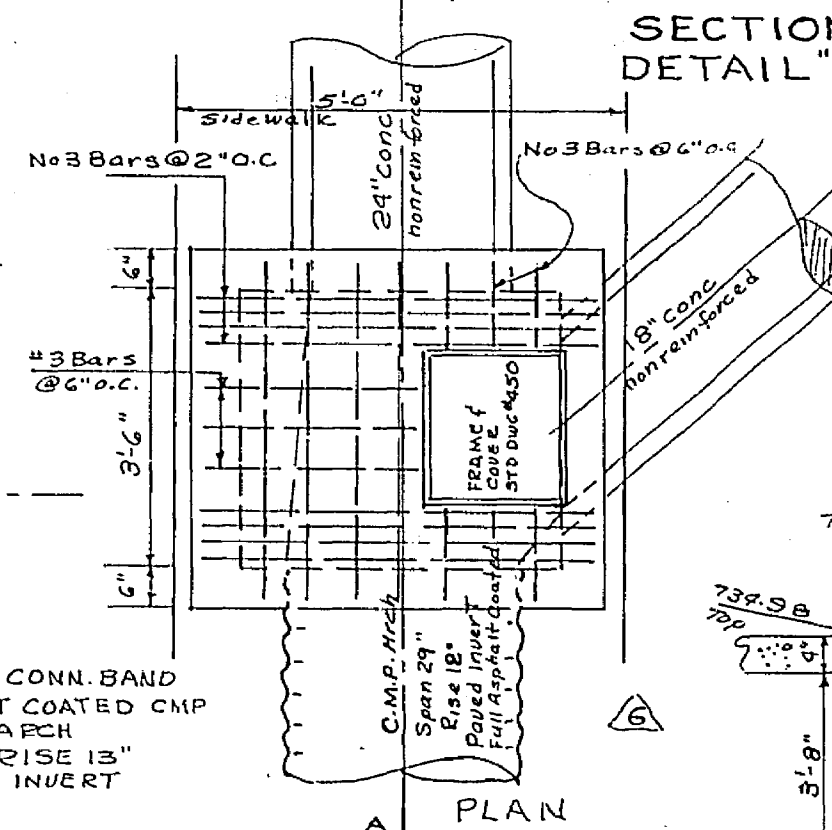
SECTION DETAIL "A"



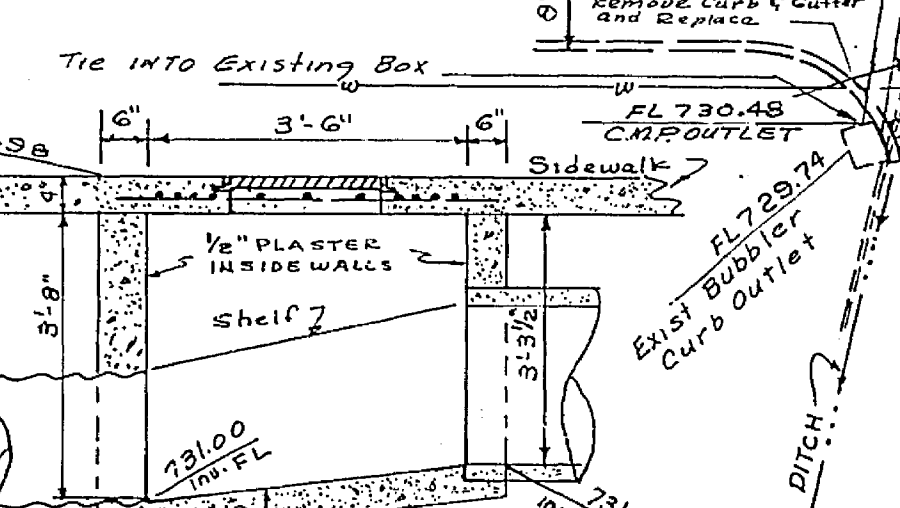
SECTION DETAIL "B"



FABRICATED T-FITTING JUNCTION  
PLAN - DETAIL "D"



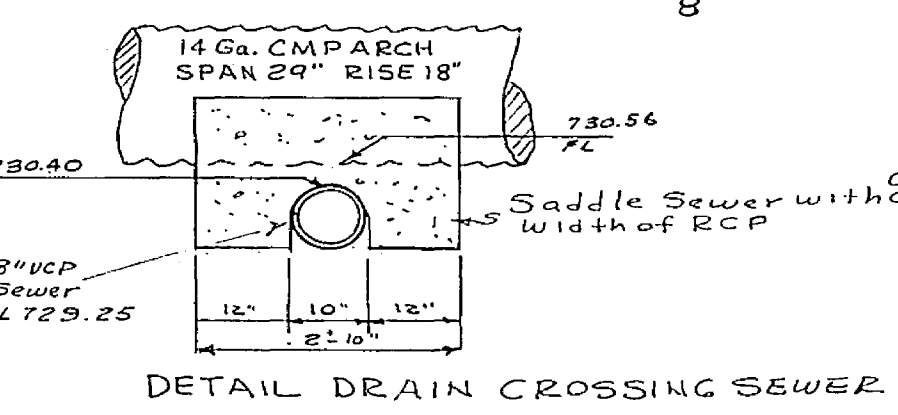
PLAN



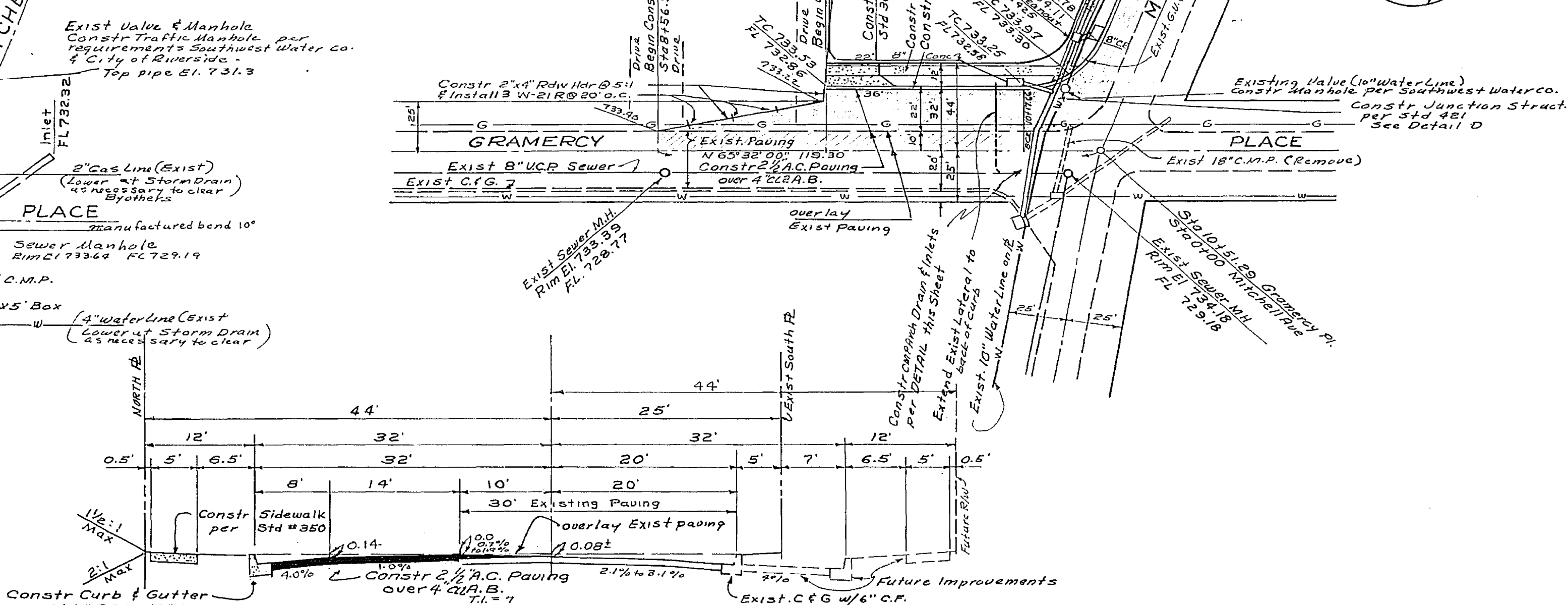
DETAIL - STORM DRAIN & INLETS  
INTERSECTION GRAMERCY PL. & MITCHELL AVE.  
SCALE 1" = 20'

- NOTES: CLEANOUT SCALE 1" = 20'
1. Conc shall be class A
  2. Re. Steel shall be 4' deformed 1/2" clear from face of conc. unless otherwise shown
  3. The top of the basin shall be poured monolithic with sidewalk. Omit dowels and top of cleanout walls finished smooth

APPROVED FOR STREET LIGHTS  
R. P. D. [Signature]  
GEN. SUPT. CHIEF ENGR. DATE



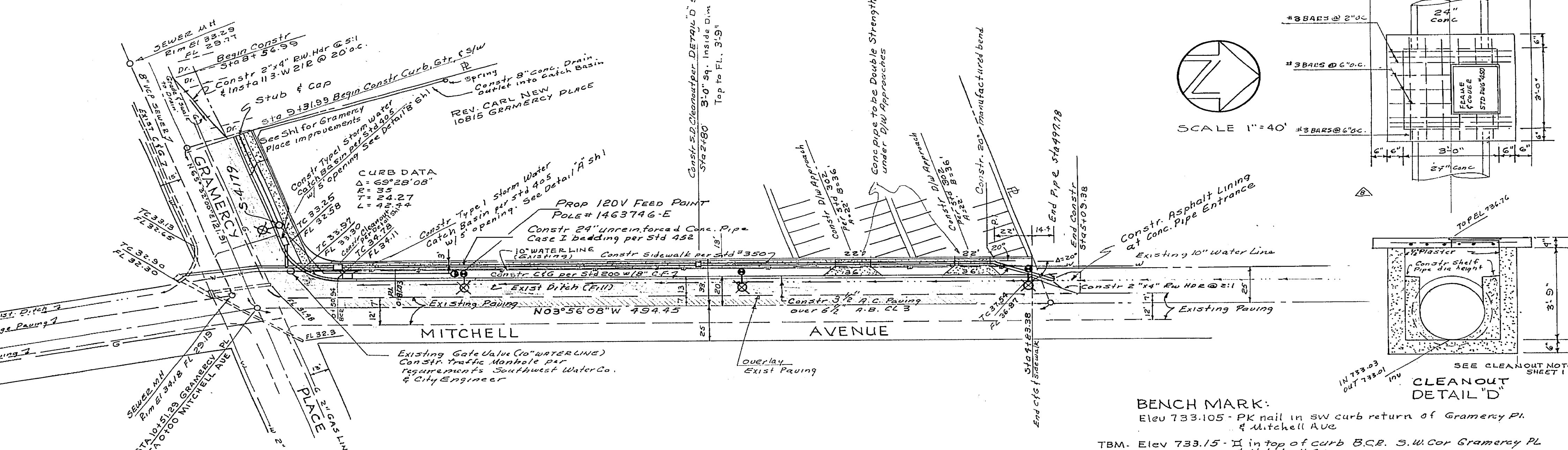
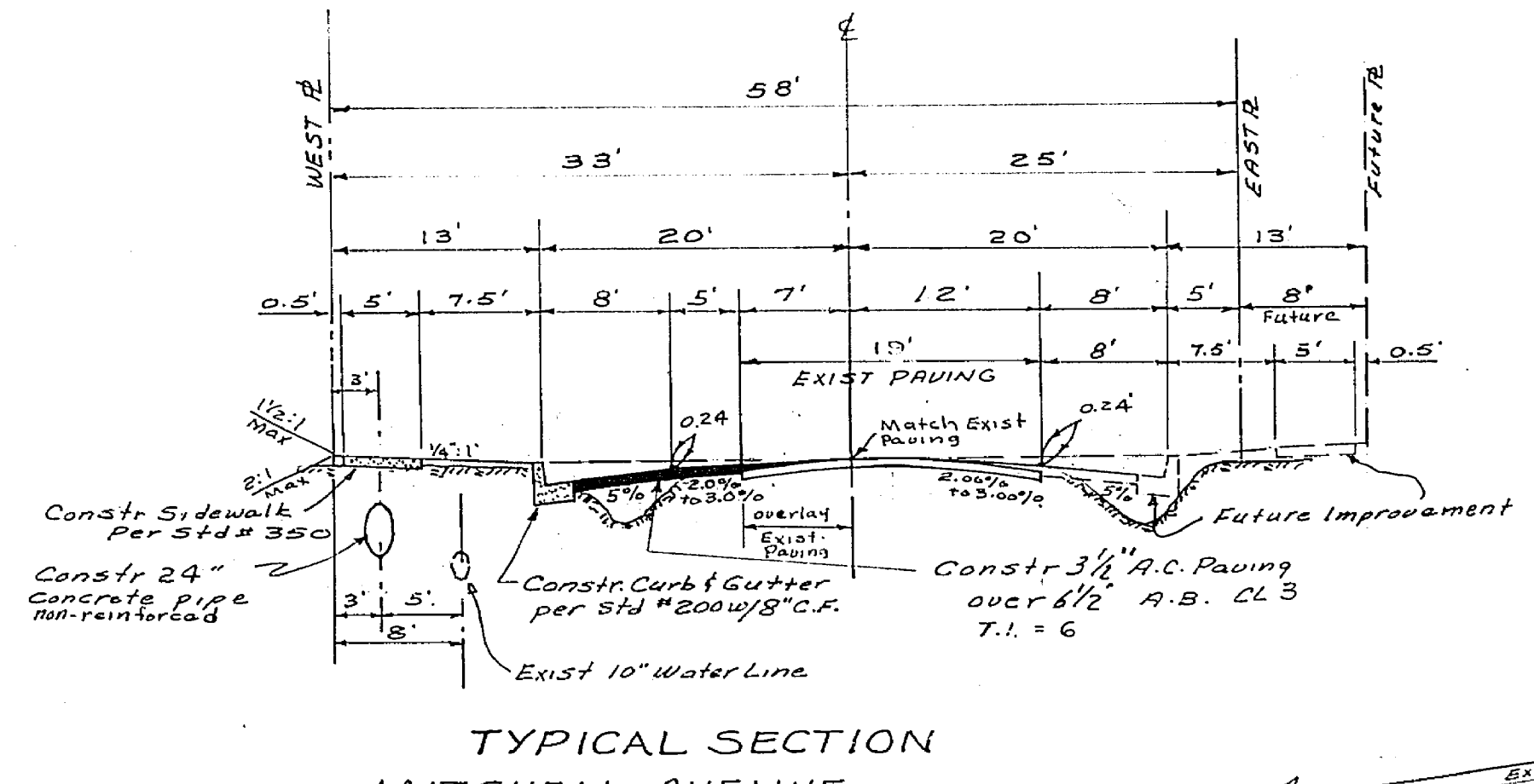
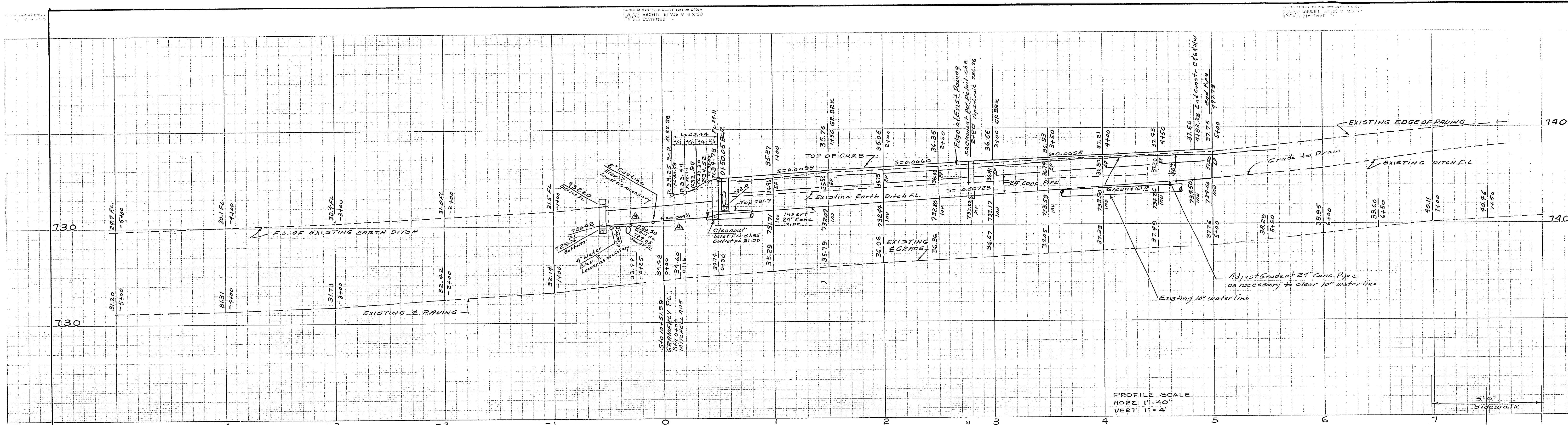
DETAIL DRAIN CROSSING SEWER



TYPICAL SECTION - GRAMERCY PL.

SUBMITTED BY: <b>STONE ENGINEERING</b> RIVERSIDE, CALIF.		CITY OF RIVERSIDE, CALIFORNIA DEPARTMENT OF PUBLIC WORKS		PROJECT NO. C-6-656 <b>15-13161</b>
APPROVED BY: [Signature] RCE 12223		APPROVED BY: [Signature] DIRECTOR OF PUBLIC WORKS		R-1135 SHEET 1 OF 2
DESIGNED BY: [Signature] DRAWN BY: [Signature] CHECKED BY: [Signature]		DATE: 1-17-66		C-6-656 10815 GRAMERCY PL HORIZ. SCALE: 1" = 40' VERT. SCALE: 1" = 4' FILE NO.





- LEGEND**
- Indicates City of Riverside marbleite light standard No. 4504 with 1000L, 250W Type III Line. Material: mercury vapor luminaire, Cat. No. LM43A2 or approved equal.
  - Indicates 250W, 10,000L M.U. mast arm street light to be installed on existing wood poles upon receipt of payment of \$75.00 to Public Utilities.
  - Indicates 1" rigid galv. steel conduit, except as noted.
  - Indicates feed point.
- STREET LIGHT NOTES**
- All street light standards and pullboxes to be located in the field.
  - All street light standards shall be checked for clearance of driveways and placed 1' from end of curb returns.
  - See City of Riverside Ord. No. 41-1300B for light standard details.
  - All cable to be AWG No. 8 copper.
  - This is a 2 wire, 120 volt multiple system.
  - All construction to comply with City of Riverside Street Light Specifications.
  - Inspections to be called for as outlined in specifications.
  - (b) Feed points to be confirmed with Edison Co. at time of construction.
  - # 16<sup>00</sup> Connection fee paid Edison Co. DATE PAID
  - # 675<sup>00</sup> Fee for mast arm installation paid. DATE PAID
  - # 5<sup>00</sup> Inspection Fee Paid DATE PAID

**GENERAL NOTES**

- It shall be the responsibility of the contractor to clear the right of way in accordance with the provisions of law as it affects each utility including irrigation lines and appurtenances and at no cost to the City.
- Construction shall be in accordance with the City of Riverside Department of Public Works, Specifications No. 401 and Standard Drawings.
- Prime coat, seal coat and paint binder are required.
- Grading will require a permit under Ordinance 3093 for a cut or fill exceeding 100 cubic yards, or a fill of one foot in depth.
- Trim edge of existing pavement where new paving joins existing pavement, to a clean, straight line. Construct matching paving as shown and overlay paving as directed in the field to produce a smooth crown section. The engineer estimates the amount of asphalt overlay to be approx. 22.0 tons.
- The developer shall arrange for a test of the soil of the subgrade level by a soils engineer. Thickness of pavement and thickness and type of aggregate base shall be determined by the soils engineer and submitted to the City of Riverside for approval.
- The finished subgrade shall have a compaction of not less than 90% for a depth of 0.5' as determined by test method No. 21C of Calif. 21C immediately prior to placement of the curb.

**APPROVED FOR STREET LIGHTS**  
 SUBMITTED BY: **STONE ENGINEERING**, RIVERSIDE, CALIF.  
 APPROVED BY: *Ralph Stone* 2-16-66  
 RCE 12620  
 DESIGNED BY RGS DRAWN BY RGS CHECKED BY [Signature]

**CITY OF RIVERSIDE, CALIFORNIA**  
 DEPARTMENT OF PUBLIC WORKS  
 APPROVED BY: [Signature] DATE 2-17-66  
 DIRECTOR OF PUBLIC WORKS

**N/W CORNER MITCHELL AVE. & GRAMERCY PL.**  
 PROJECT NO. C-6-656  
 10815 GRAMERCY PL.  
 R-1135  
 SHEET 2 OF 2  
 FILE NO.