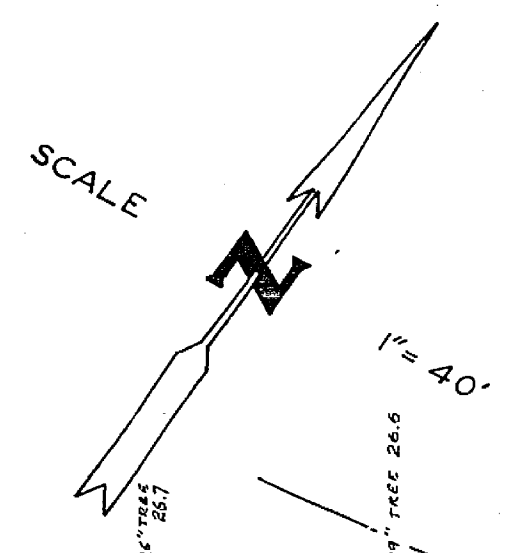
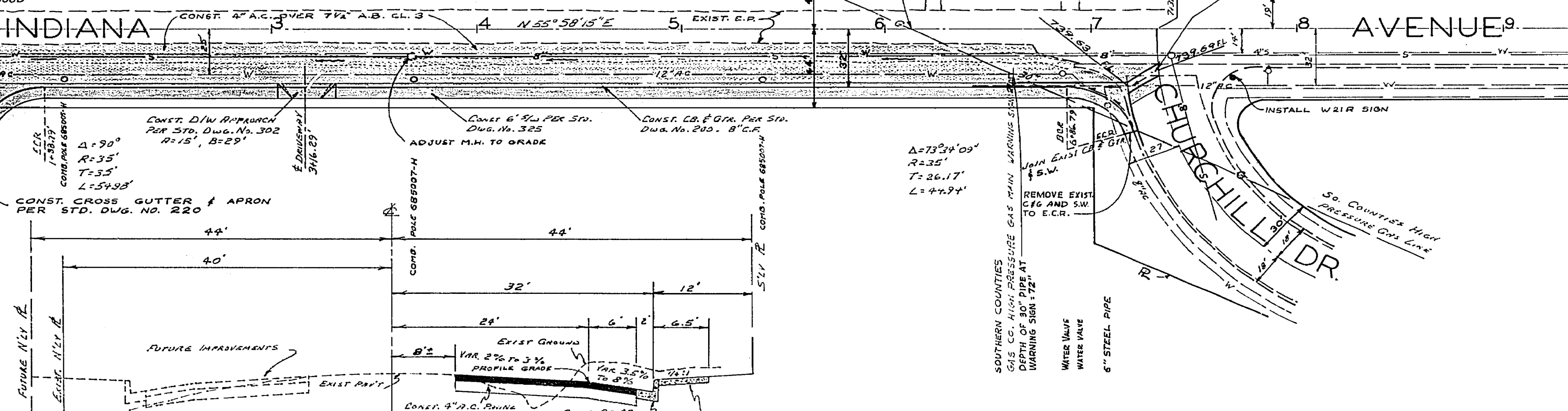


T.B.M. "A" 740.180 R.R. SPIKE IN POLE # 665498-H ON S.E. CORNER INDIANA & FILLMORE.  
 REF: FB. 722/53-61  
 SCALES: VERT. 1"=4'  
 HOR. 1"=40'



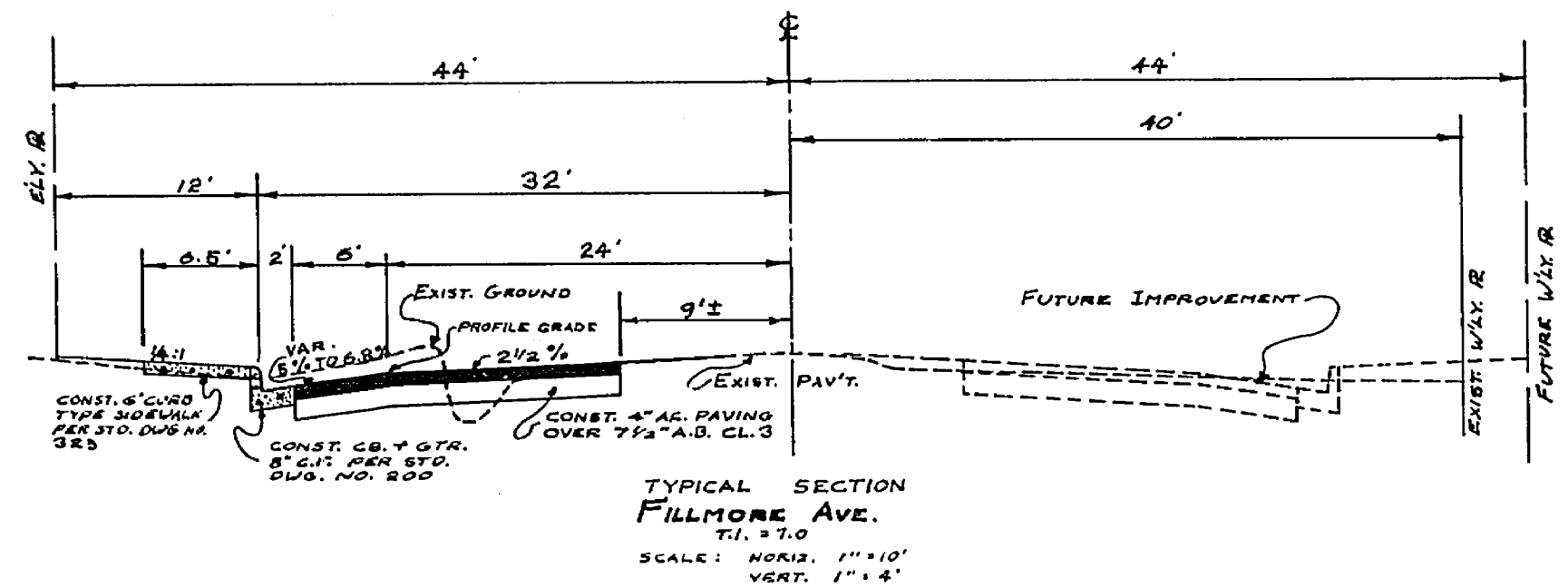
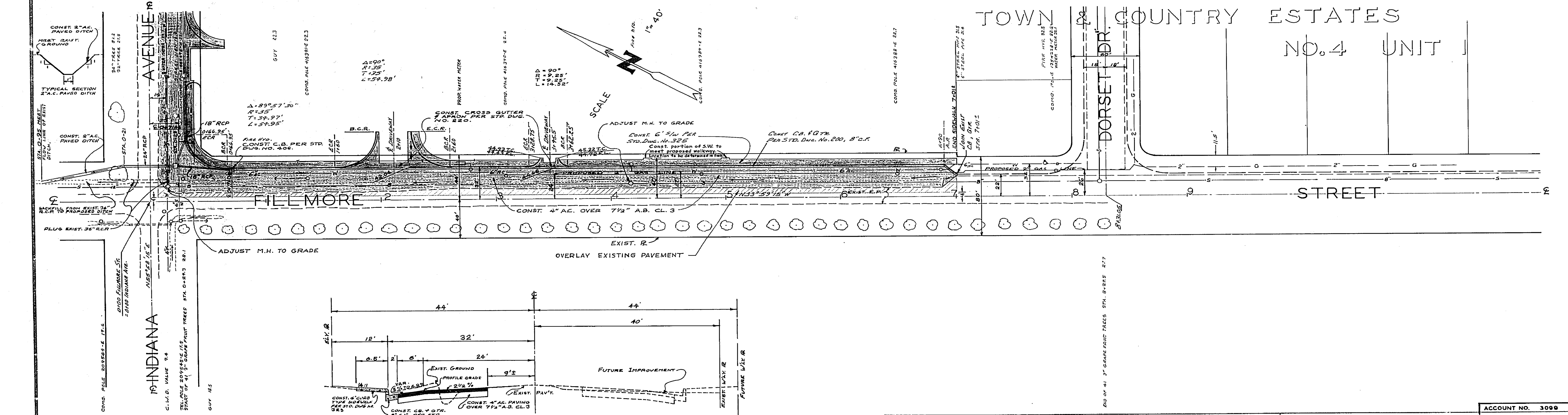
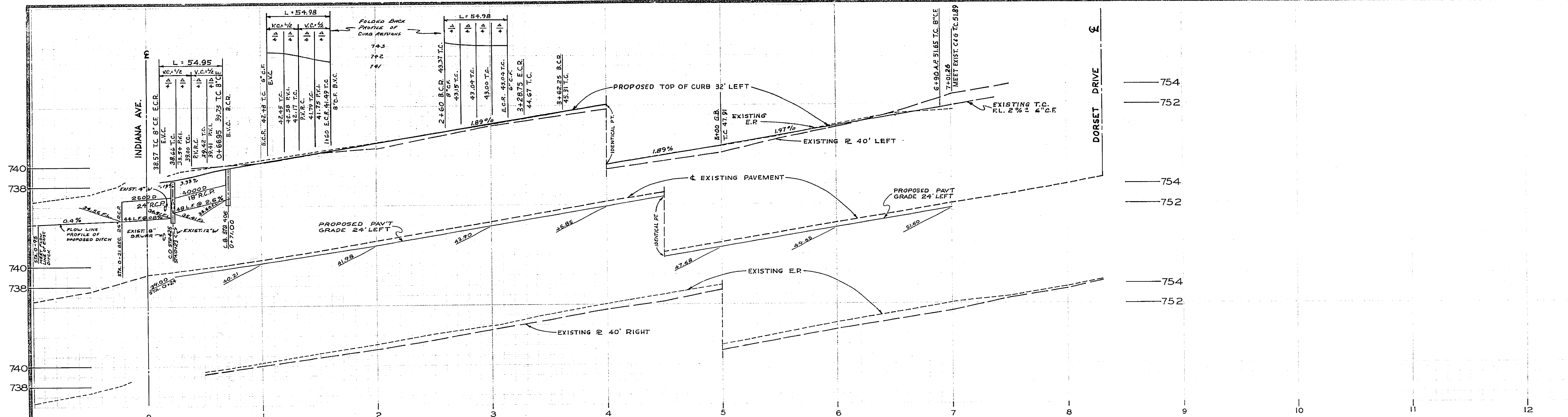
- 4.5" VALVE 342
- 15" GAS MAIN 323
- 24" TREE 223
- 4.5" VALVE 326
- 4.5" VALVE 327
- 4.5" VALVE 328
- 4.5" VALVE 329
- 4.5" VALVE 330
- 4.5" VALVE 331
- 4.5" VALVE 332
- 4.5" VALVE 333
- 4.5" VALVE 334
- 4.5" VALVE 335
- 4.5" VALVE 336
- 4.5" VALVE 337
- 4.5" VALVE 338
- 4.5" VALVE 339
- 4.5" VALVE 340
- 4.5" VALVE 341
- 4.5" VALVE 342
- 4.5" VALVE 343
- 4.5" VALVE 344
- 4.5" VALVE 345
- 4.5" VALVE 346
- 4.5" VALVE 347
- 4.5" VALVE 348
- 4.5" VALVE 349
- 4.5" VALVE 350
- 4.5" VALVE 351
- 4.5" VALVE 352
- 4.5" VALVE 353
- 4.5" VALVE 354
- 4.5" VALVE 355
- 4.5" VALVE 356
- 4.5" VALVE 357
- 4.5" VALVE 358
- 4.5" VALVE 359
- 4.5" VALVE 360



TYPICAL SECTION  
 INDIANA AVE.  
 7.11.70  
 SCALE: HOR. 1"=40'  
 VERT. 1"=4'

NOTES:  
 1) C.O. BOX AT STA. 0+34 SHALL HAVE A TOP SLAB OF 6" FOR FRAME AND COVER USE OVER ALL FRAME SIZE 19x23. USE ALHAMBRA FOUNDRY A-2017 OR EQUAL.

CITY OF RIVERSIDE, CALIFORNIA DEPARTMENT OF PUBLIC WORKS		INDIANA AVENUE FILLMORE ST. TO CHURCHILL DRIVE FOR C-25-645 (ORRENMAA ELEMENTARY SCHOOL)		ACCOUNT NO. 3099 PROJECT NO. 55 311
APPROVED BY OFFICE ENGINEER PARK DEPARTMENT TRAFFIC DIVISION ASSISTANT CITY ENG.	BY DATE 4-29 1966	APPROVED BY DIRECTOR OF PUBLIC WORKS	DATE 5-6-66	SHEET 1 OF 2 FILE NO.
DESIGNED BY R.R.S. DRAWN BY D.C.K. CHECKED BY [Signature]		HORIZ. SCALE: 1"=40' VERT. SCALE: 1"=4'		



CITY OF RIVERSIDE, CALIFORNIA DEPARTMENT OF PUBLIC WORKS		<b>FILLMORE STREET</b> INDIANA AVE. TO DORSET DRIVE FOR C-25-645 (ORRENMAA ELEMENTARY SCHOOL)		ACCOUNT NO. 3009 PROJECT NO. 55 311
APPROVED BY OFFICE ENGINEER PARK DEPARTMENT TRAFFIC DIVISION ASSISTANT CITY ENG.	BY DATE CER 4-29 5-6	APPROVED BY [Signature] DIRECTOR OF PUBLIC WORKS	DATE 5-6-66	SHEET 2 OF 2 FILE NO.
DESIGNED BY R.R.S. DRAWN BY G.M. CHECKED BY [Signature]		HORIZ. SCALE: 1" = 40' VERT. SCALE: 1" = 4'		