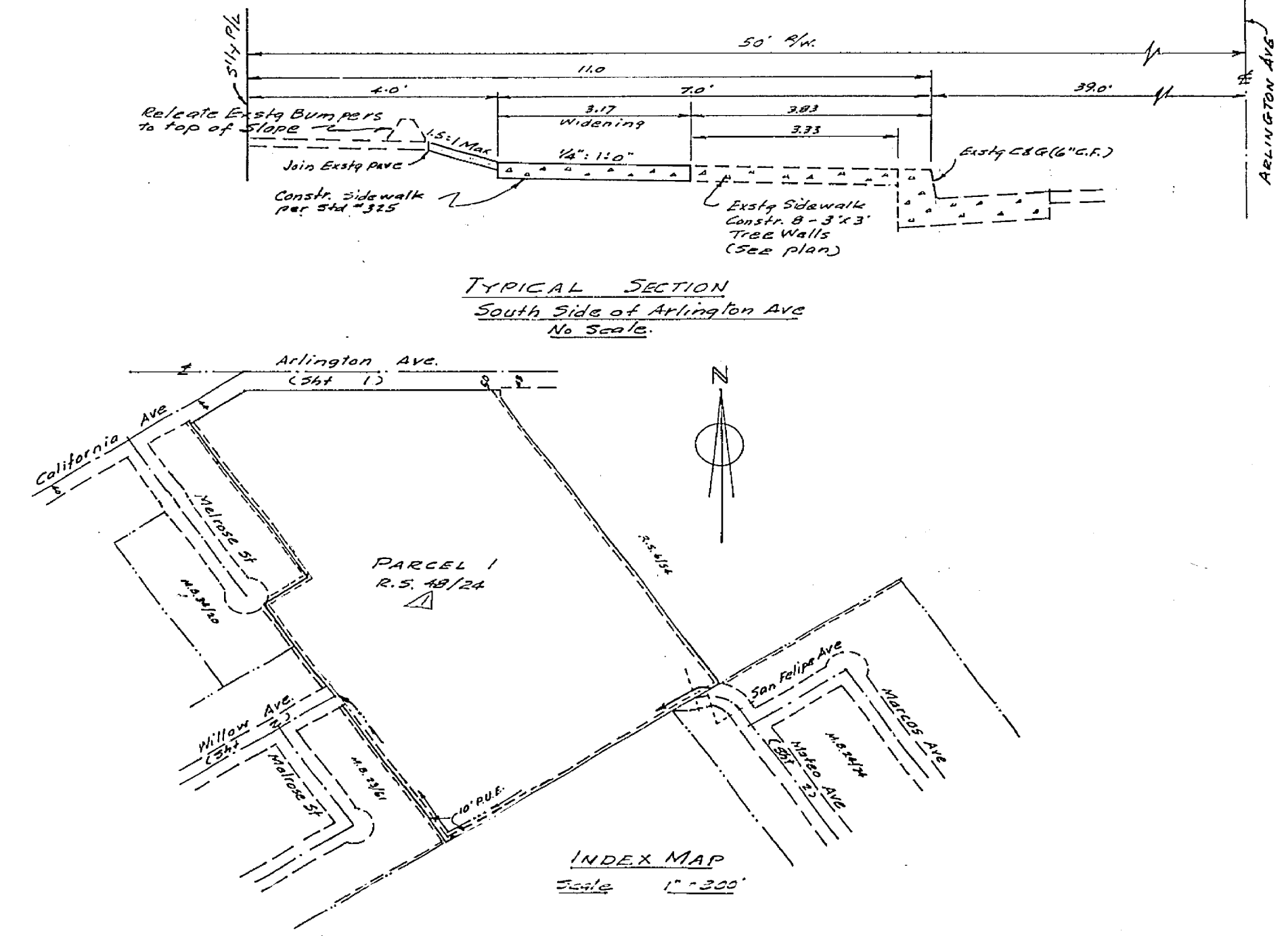
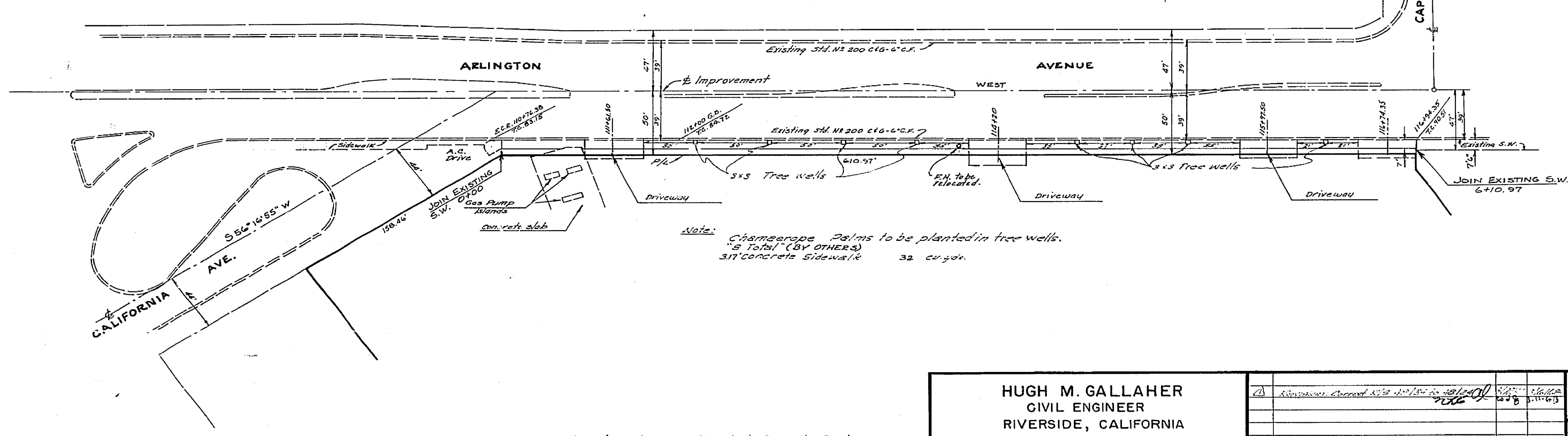


- GENERAL NOTES:**
1. It shall be the responsibility of the contractor to clear the right of way in accordance with the provisions of law as it affects, each utility including irrigation lines and appurtenance and at no cost to the City.
 2. Construction shall be in accordance with the City of Riverside, Department of Public Works Specification No. 461 and Standard Drawings.
 3. Grading will require a permit under Ordinance 3093, for a cut or fill exceeding 100 Cubic Yards or a fill over one foot in depth.
 4. The finished sub-grade shall have a compaction of not less than 90% for a depth of 15 feet as determined by test method No. 2017 S16.1 immediately prior to placement of the cover.
 5. Prime coat, Seal coat, & Paint Binder are required.
 6. Trim edge of existing pavement to a clean, straight line where new paving joins existing pavement, and construct match up paving & overlay as directed in the field to produce a smooth crown slope.

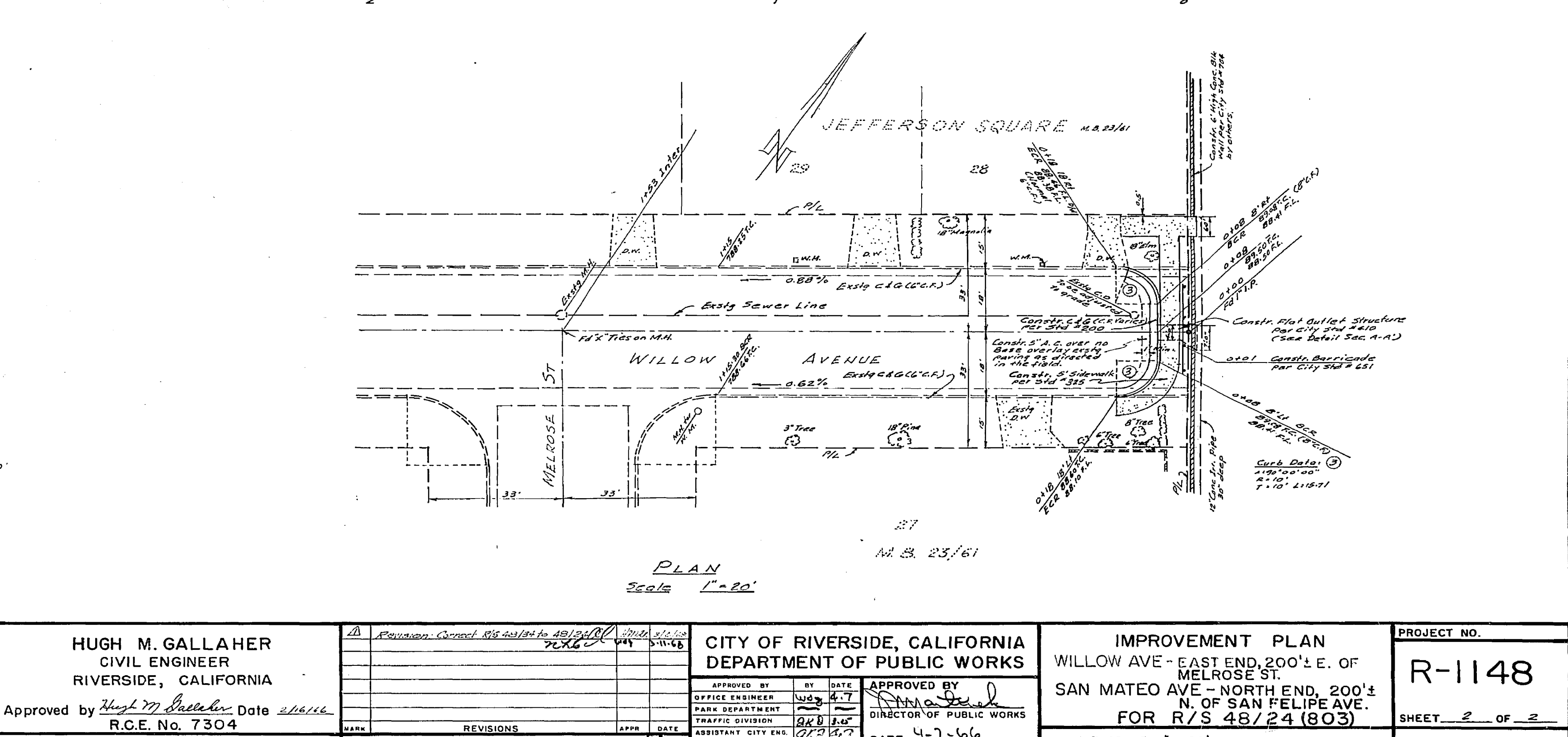
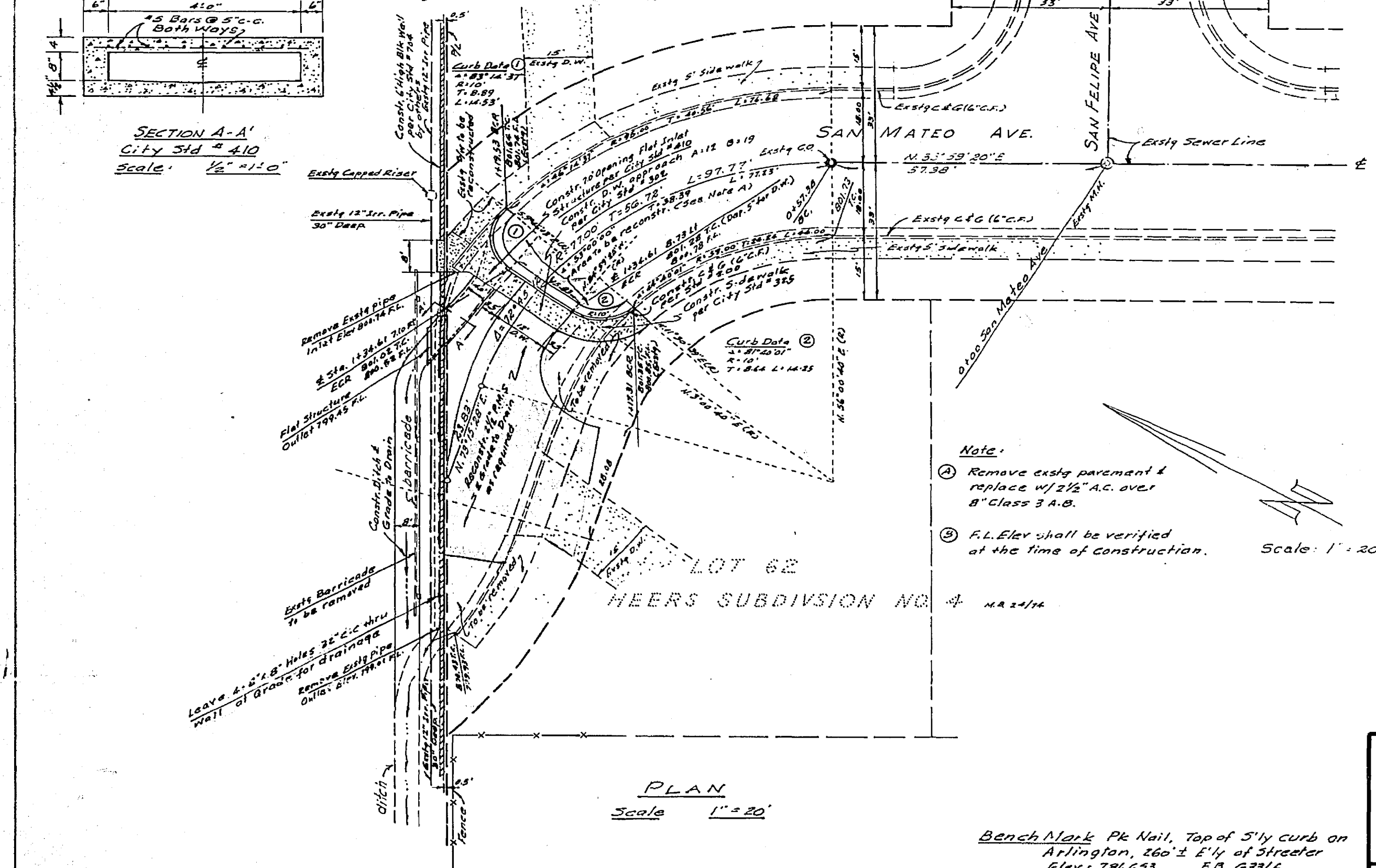
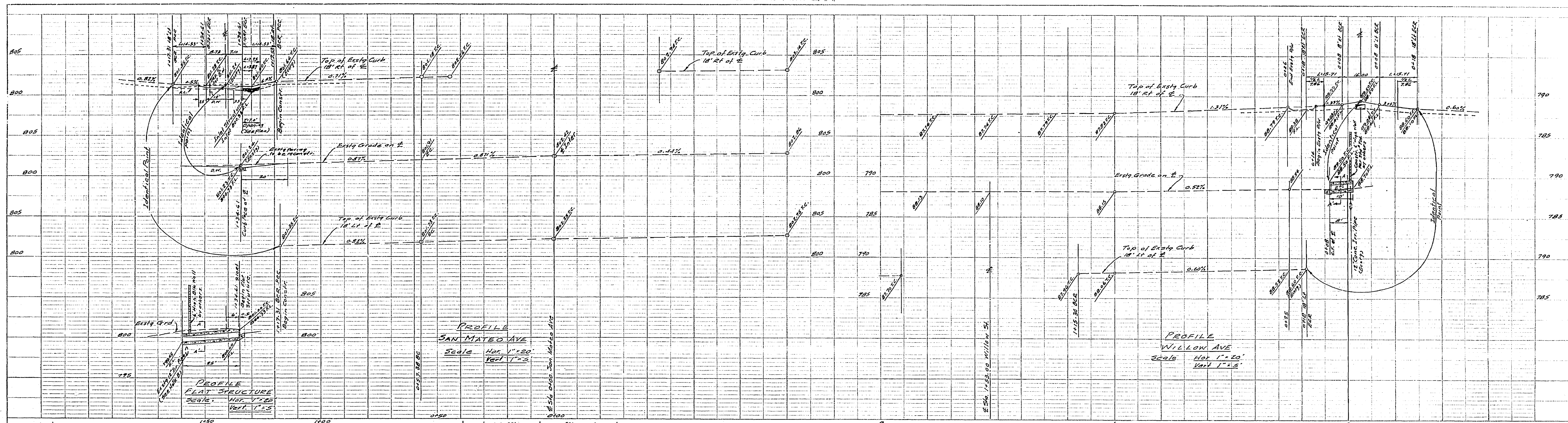
QUANTITIES	ESTIMATE
Std #200 Curb & Gutter (W.C.F.)	81 L.F.
Std #451 Barricade	2 ea.
Std #410 Inlet Structure	1 ea.
San Mateo Concrete	
3/8" x 3/8" x 1/2" gal. Stl. Angle Plate	3.0 cu. yds.
1" Long	1 ea.
Std #410 Outlet Structure	1 ea.
Willow Ave. Concrete	
3/8" x 3/8" x 1/2" gal. Stl. Angle Plate	1.0 cu. yds.
1" Long	1 ea.
Reinforcing Bars (both structures)	309 lbs.
5' R.C.C. Sidewalk	9 cu. yds.

PLAN
 Scale: 1" = 50'



Search Mark:
 P.K. Nail Top 5 1/4 Curb
 Arlington Ave, 560's N.W.
 of S. Tracerline -
 Elev. 781.658 R.O. a 33/6

HUGH M. GALLAHER CIVIL ENGINEER RIVERSIDE, CALIFORNIA Approved by <i>Hugh M. Gallaher</i> Date 2/14/66 R.G.E. No. 7304	CITY OF RIVERSIDE, CALIFORNIA DEPARTMENT OF PUBLIC WORKS APPROVED BY: [Signature] TRAFFIC DIVISION ASSISTANT CITY ENG. [Signature] DATE 4-7-66	IMPROVEMENT PLAN ARLINGTON AVE., SOUTH SIDE CAPISTRANO WAY TO 650'S WLY FOR R/S 48/24 (B03)	PROJECT NO. R-1148
			SHEET <u>1</u> OF <u>2</u>
W.O. E-1026 F.B. G-14	DESIGNED BY: [Signature] DRAWN BY: [Signature] CHECKED BY: [Signature]	HORIZ. SCALE 1" = 50' VERT. SCALE 1" = 5'	



HUGH M. GALLAHER CIVIL ENGINEER RIVERSIDE, CALIFORNIA Approved by <i>Hugh M. Gallaher</i> Date 4/16/66 R.C.E. No. 7304	Revision 1: <i>Revisions Council 8/16/66 to 48/24/83</i> 2: <i>PLX</i> 3: <i>4/15/66</i>	CITY OF RIVERSIDE, CALIFORNIA DEPARTMENT OF PUBLIC WORKS APPROVED BY: <i>[Signature]</i> DATE: 4-7-66 OFFICE ENGINEER PARK DEPARTMENT TRAFFIC DIVISION ASSISTANT CITY ENG.	IMPROVEMENT PLAN WILLOW AVE - EAST END, 200' ± E. OF MELROSE ST. SAN MATEO AVE - NORTH END, 200' ± N. OF SAN FELIPE AVE. FOR R/S 48/24 (803)	PROJECT NO. R-1148 SHEET 2 OF 2
	W.D. C-1096 FB. 33/6 DESIGNED BY: <i>[Signature]</i> DRAWN BY: <i>[Signature]</i> CHECKED BY: <i>[Signature]</i>	DATE: 4-7-66 HORIZ. SCALE: 1"=20'		