

PROPERTY OF  
CITY OF RIVERSIDE  
DEPT. OF PUBLIC WORKS  
ENGINEERING DIVISION

L. FREDERICK PACK  
P.E. 74448  
COVINA, CALIFORNIA  
APPROVED BY *L. Frederick Pack* 3-21-17

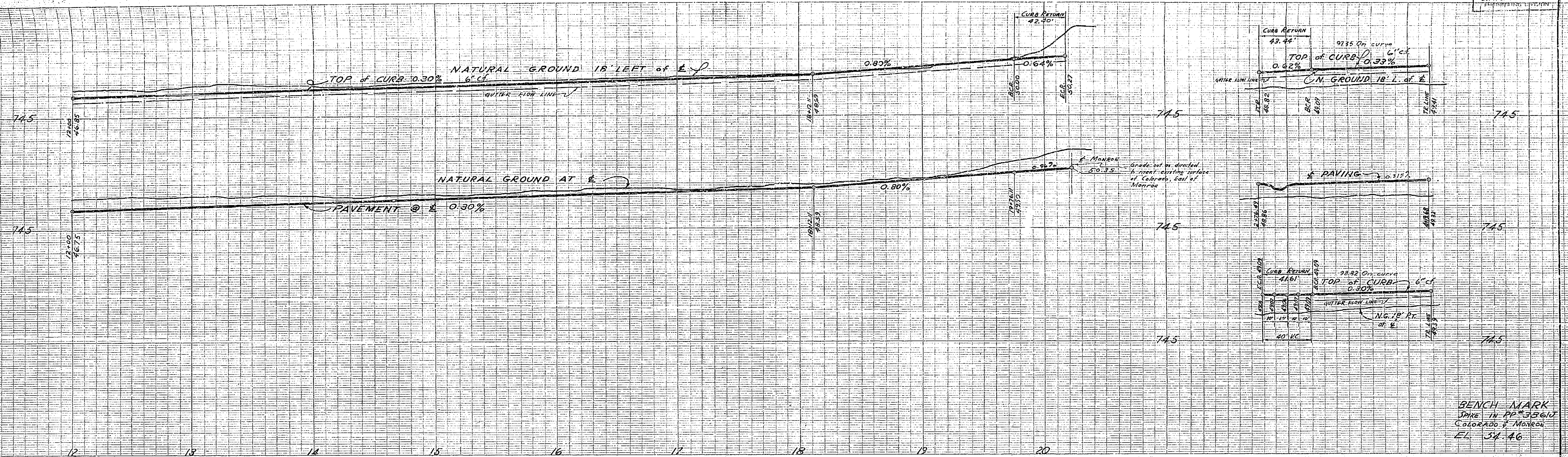
CITY OF RIVERSIDE, CALIFORNIA  
DEPARTMENT OF PUBLIC WORKS

**STREET PLAN & PROFILE**  
BROCKTON HEIGHTS NO. 6  
From 1003.54' E. of Monticello  
GLENCOE AVE. To 1003.54' E. of Monticello  
WILDWOOD WAY From Glencoe Drive  
To Conway Drive

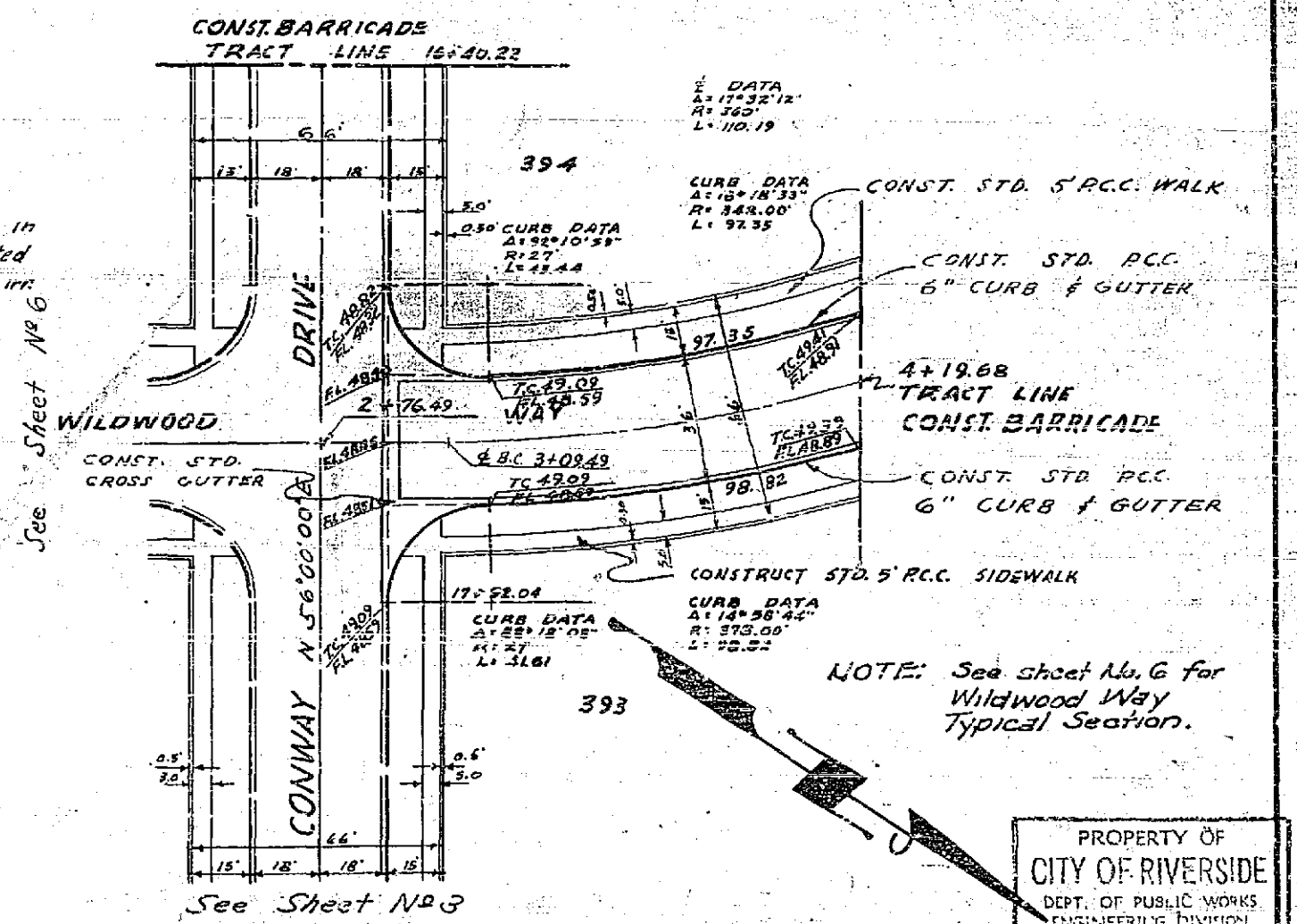
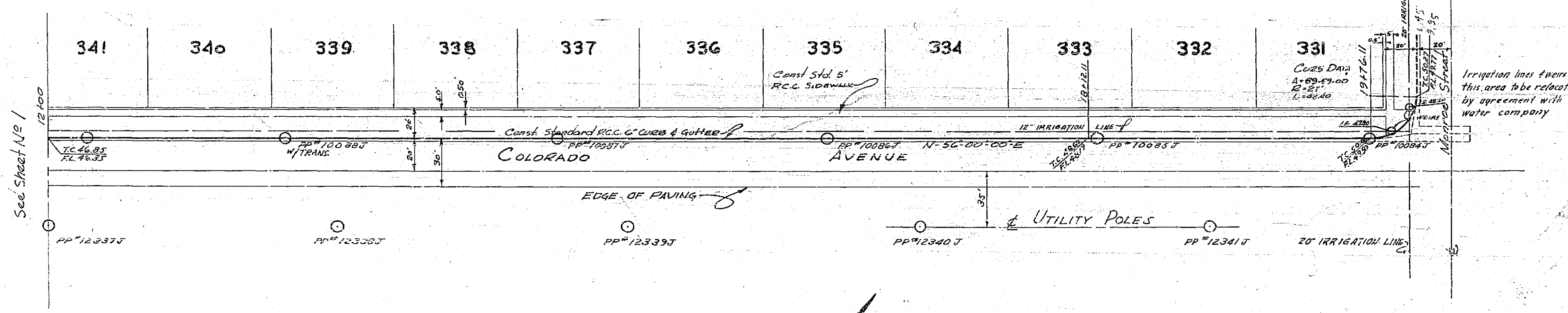
HORIZ. SCALE 1" = 40' VERT. SCALE 1" = 4'  
APPROVED BY *[Signature]* NC. R-115  
Director of Public Works  
DATE 9/21/17 SHEET 6 OF 6

PROPERTY OF  
CITY OF RIVERSIDE  
DEPT. OF PUBLIC WORKS  
ENGINEERING DIVISION

PROPERTY OF  
CITY OF RIVERSIDE  
DEPT. OF PUBLIC WORKS  
ENGINEERING DIVISION



PP#100847 to #100887 to be relocated or removed by City of Riverside Light Dept.



NOTE: See sheet No. 6 for Wildwood Way Typical Section.

PROPERTY OF  
CITY OF RIVERSIDE  
DEPT. OF PUBLIC WORKS  
ENGINEERING DIVISION

L. FREDERICK PACK  
RE. 1448  
Covina, CALIFORNIA  
APPROVED BY *[Signature]* DATE 2-2-57

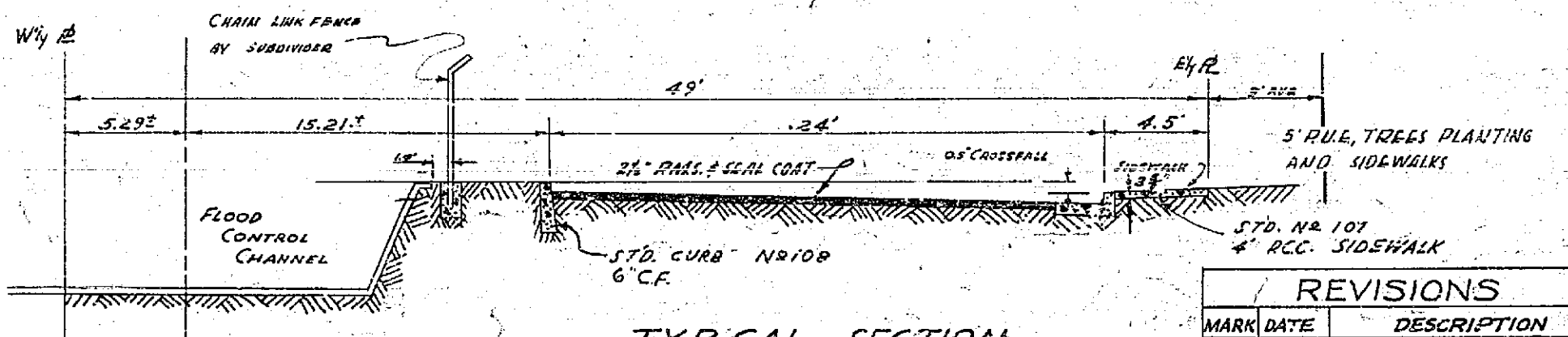
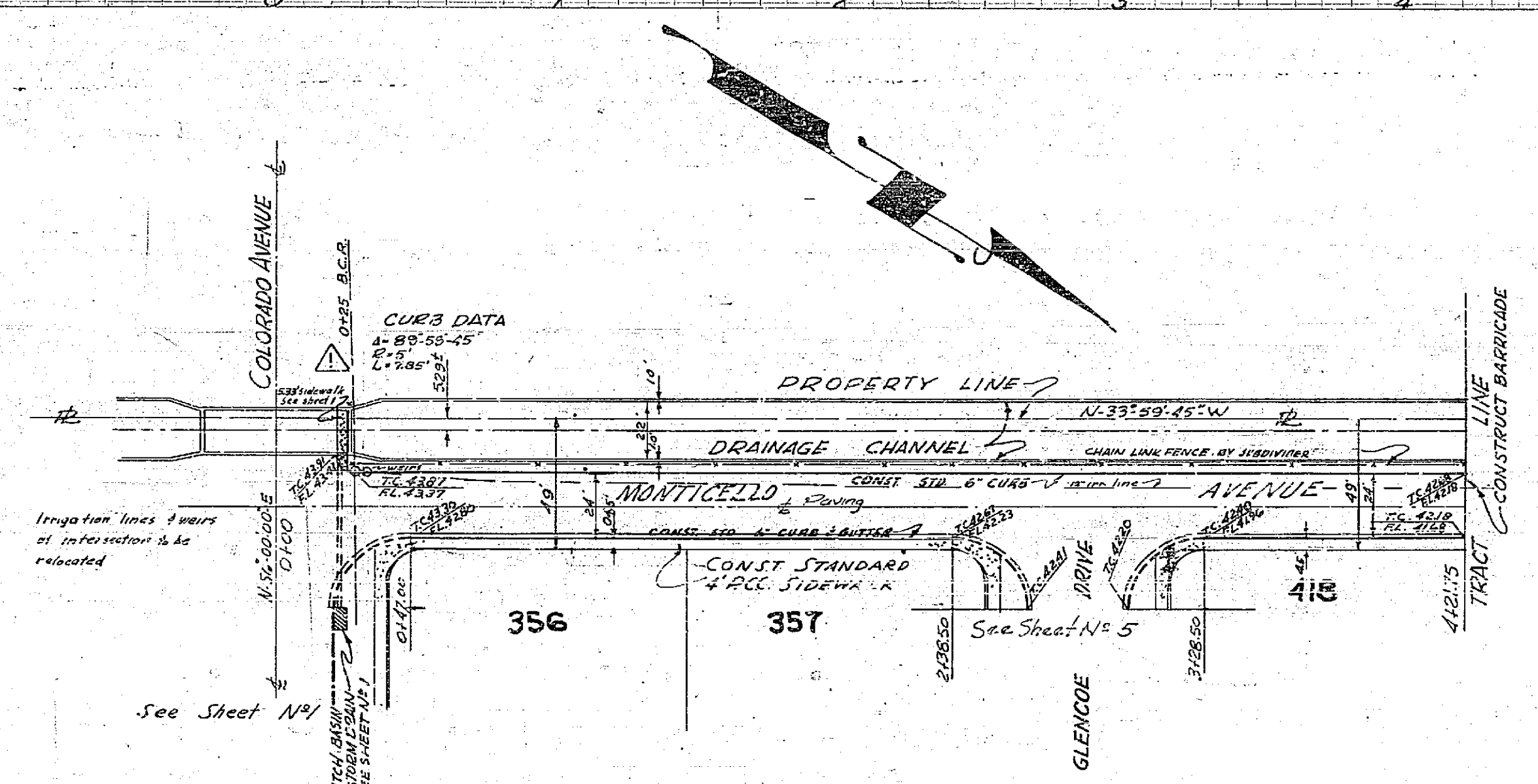
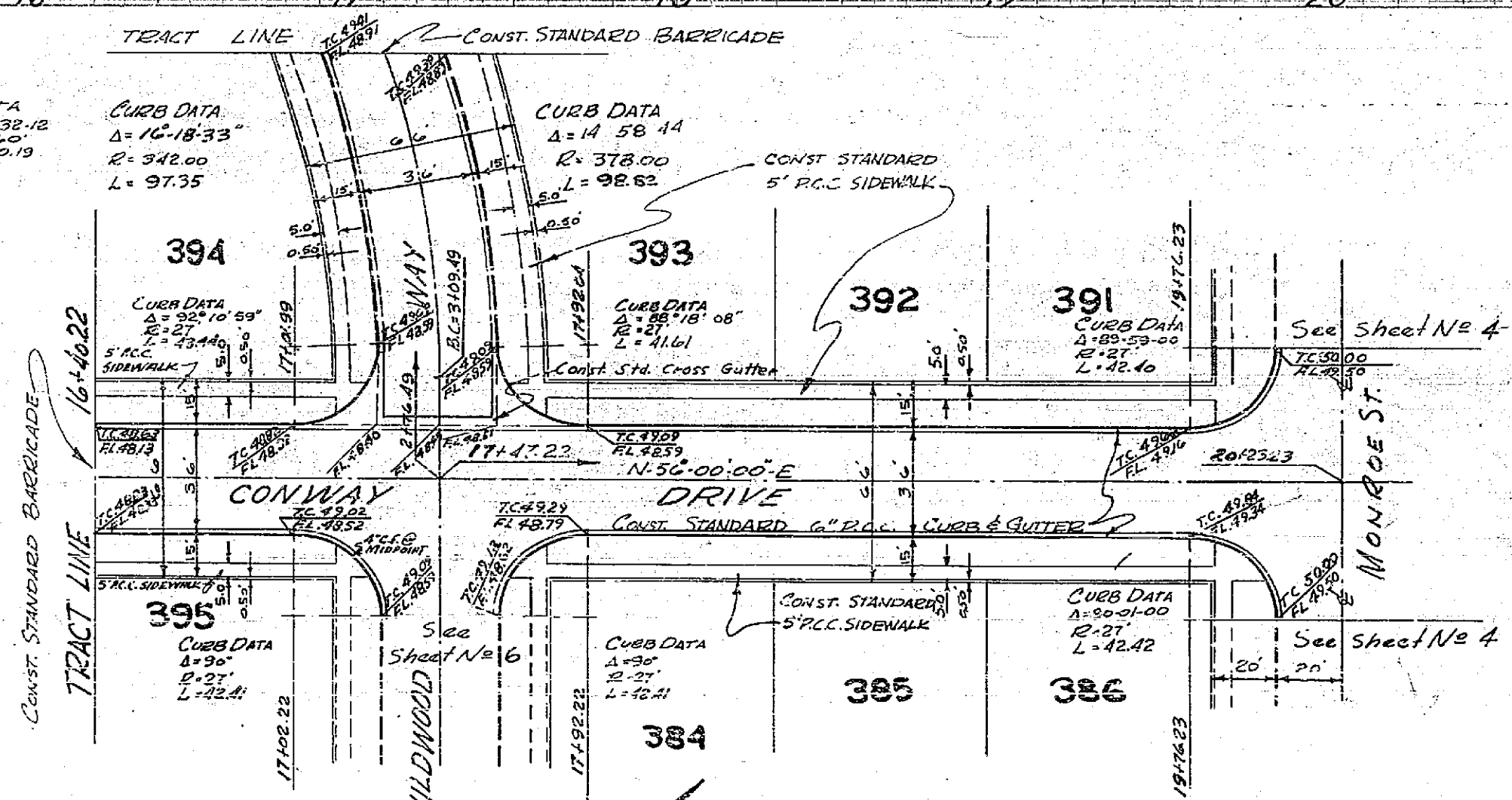
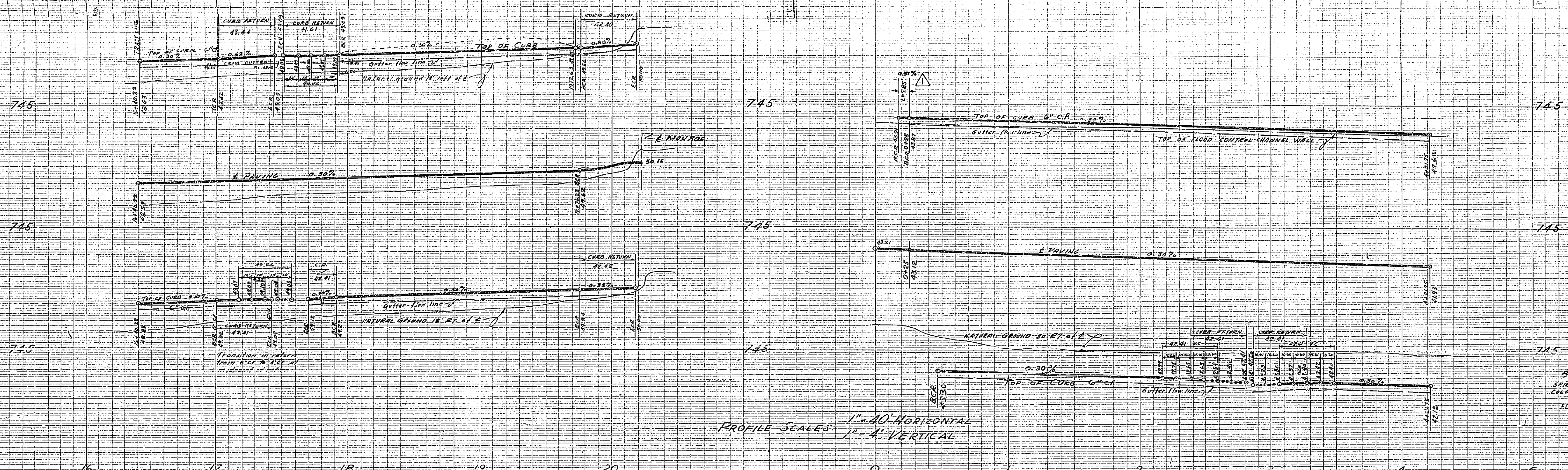
CITY OF RIVERSIDE, CALIFORNIA  
DEPARTMENT OF PUBLIC WORKS

STREET - PLAN & PROFILE  
BROCKTON HEIGHTS, NO. 6  
COLORADO AVE. - STA 12+00 TO MONROE  
WILDWOOD WAY - CONWAY DR. TO TR. LINE  
HORIZ. SCALE 1"=40' VERT. SCALE 1"=4'

APPROVED BY *[Signature]*  
Director of Public Works  
DATE *April 23, 1957*

NO. R-115  
SHEET 2 OF 6

PROPERTY OF  
CITY OF RIVERSIDE  
DEPT. OF PUBLIC WORKS  
ENGINEERING DIVISION



REVISIONS	
MARK	DESCRIPTION
1	CURB, SIDEWALK, & PAVING - 1' END OF CURB AT COLORADO AV.

PROPERTY OF  
CITY OF RIVERSIDE  
DEPT. OF PUBLIC WORKS  
ENGINEERING DIVISION

**L. FREDERICK PACK**  
R.E. 7448  
COVINA, CALIFORNIA

APPROVED BY *[Signature]* DATE 2/2/57

CITY OF RIVERSIDE, CALIFORNIA  
DEPARTMENT OF PUBLIC WORKS

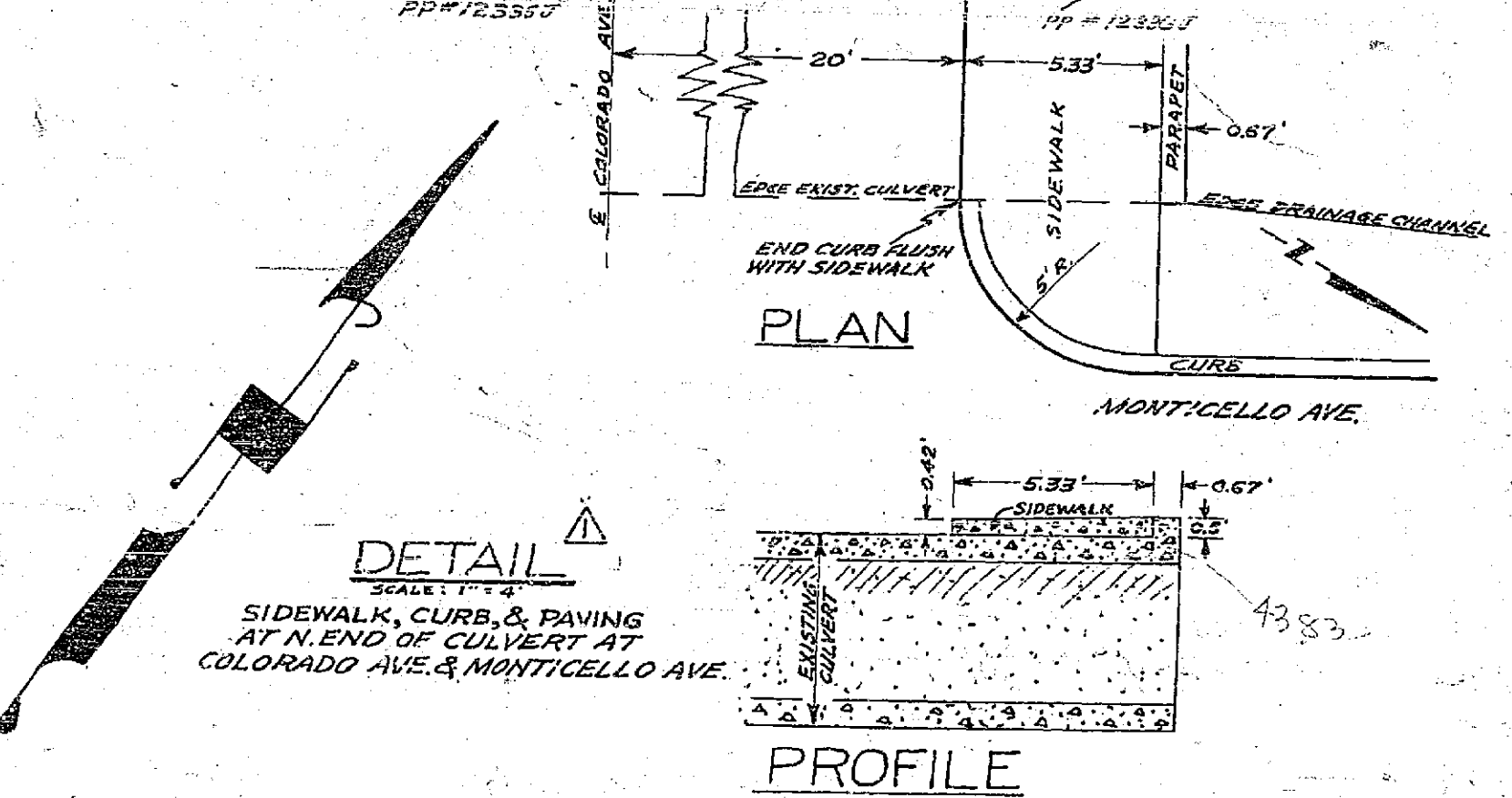
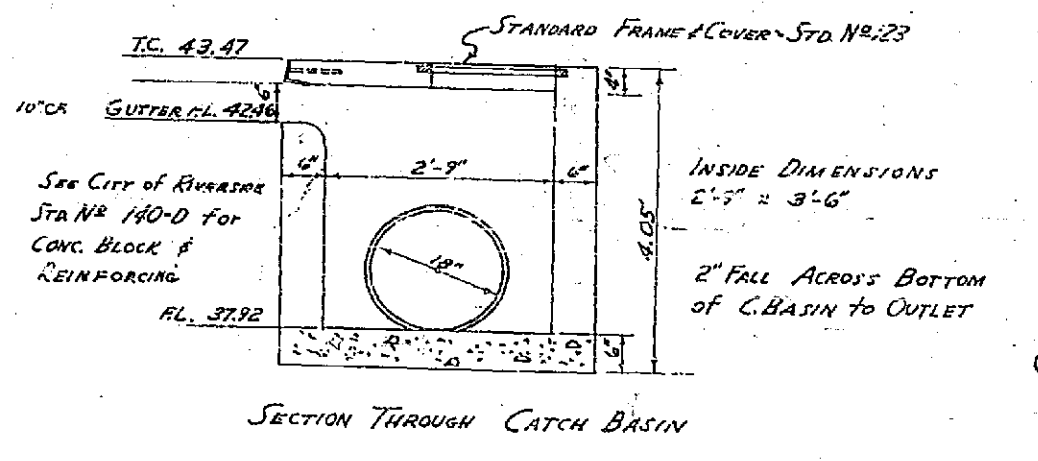
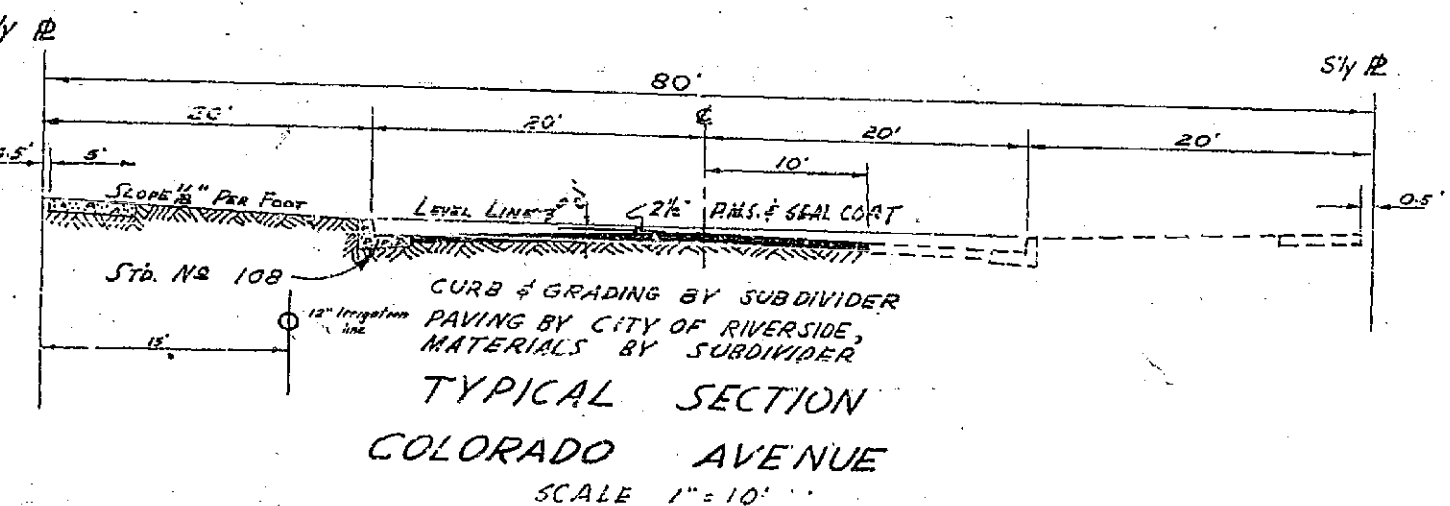
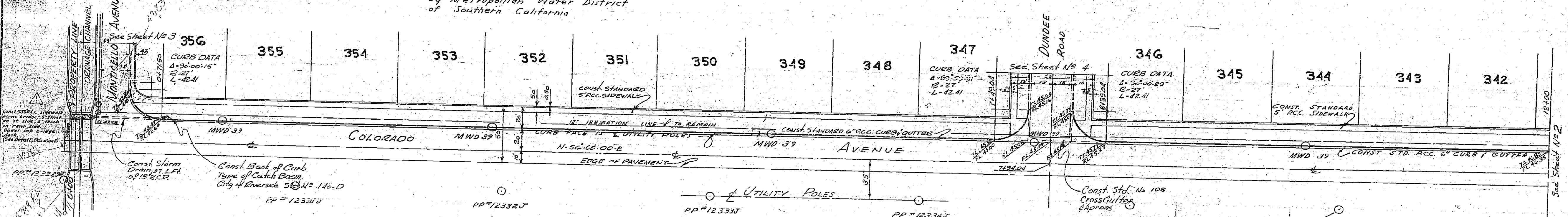
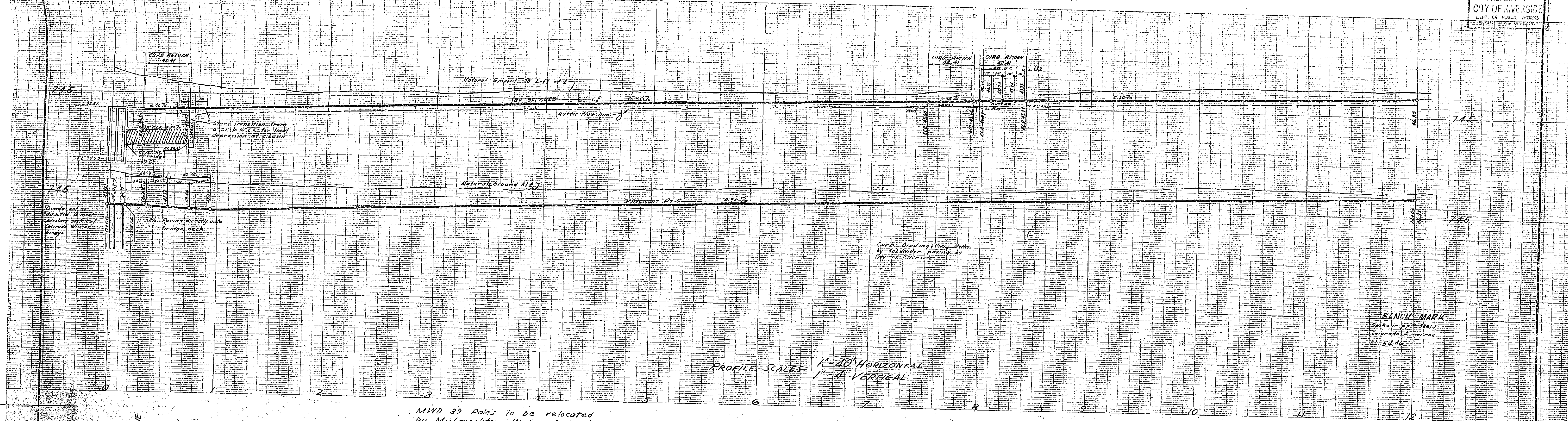
**STREET PLAN & PROFILE**  
BROCKTON HEIGHTS NO. 6  
MONTICELLO AVE. NW of Colorado Ave  
CONWAY DRIVE SW of Monroe St.

HORIZ. SCALE 1" = 40' VERT. SCALE 1" = 4'

APPROVED BY *[Signature]* NO. R-115  
Director of Public Works  
DATE 4/22/57 SHEET 3 OF 6

PROPERTY OF  
CITY OF RIVERSIDE  
DEPT. OF PUBLIC WORKS  
ENGINEERING DIVISION

PROPERTY OF  
CITY OF RIVERSIDE  
DEPT. OF PUBLIC WORKS  
ENGINEERING DIVISION



REVISIONS		
MARK	DATE	DESCRIPTION
Δ	8-28-97 H.B.	CURB, SIDEWALK, & PAVING - N. END OF CULVERT AT COLORADO.

L. FREDERICK PACK  
R.E. 744B  
COVINA, CALIFORNIA  
APPROVED BY *[Signature]* DATE 8-21-97  
CITY OF RIVERSIDE, CALIFORNIA  
DEPARTMENT OF PUBLIC WORKS  
STREET PLAN & PROFILE  
BROCKTON HEIGHTS NO. 6  
COLORADO AVENUE  
FROM 0+00 TO 12+00  
HORIZ. SCALE 1" = 40' VERT. SCALE 1" = 4'

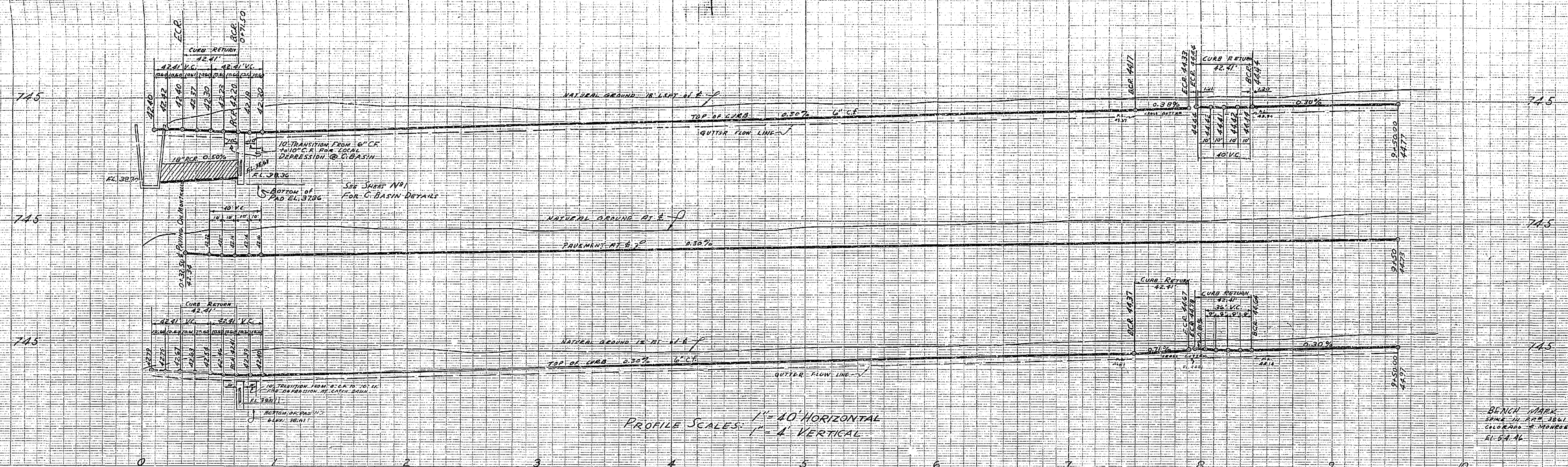
APPROVED BY *[Signature]*  
Director of Public Works  
DATE 8-21-97  
NO. R-115  
SHEET 7 OF 6

PROPERTY OF  
CITY OF RIVERSIDE  
DEPT. OF PUBLIC WORKS  
ENGINEERING DIVISION

PROPERTY OF  
CITY OF RIVERSIDE  
DEPT. OF PUBLIC WORKS  
ENGINEERING DIVISION

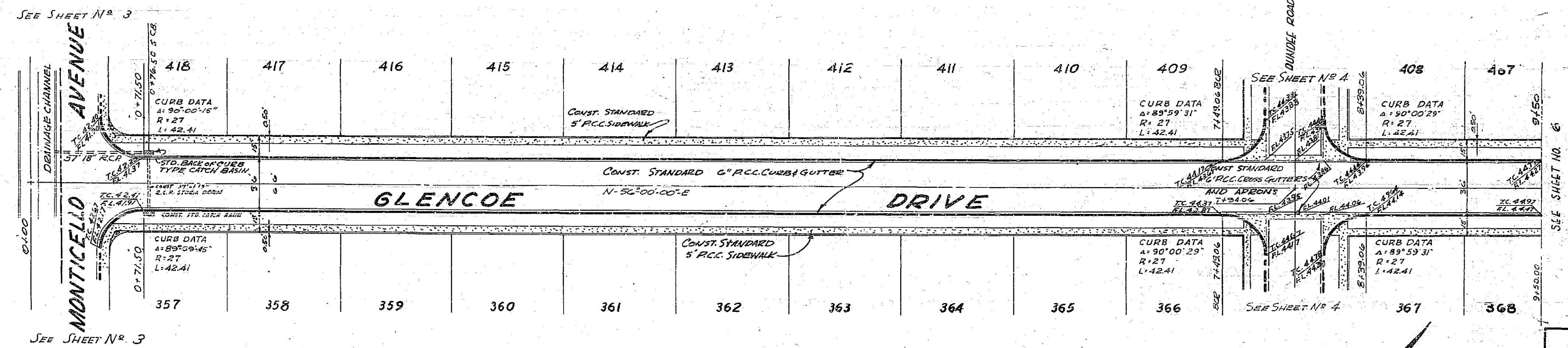
PROPERTY OF  
CITY OF RIVERSIDE  
DEPT. OF PUBLIC WORKS  
ENGINEERING DIVISION

PROPERTY OF  
CITY OF RIVERSIDE  
DEPT. OF PUBLIC WORKS  
ENGINEERING DIVISION



PROFILE SCALES:  
1" = 40' HORIZONTAL  
1" = 4' VERTICAL

BENCH MARK  
SPRINKLER VALVE  
COLORADO MONUMENT  
ELEV. 748.41

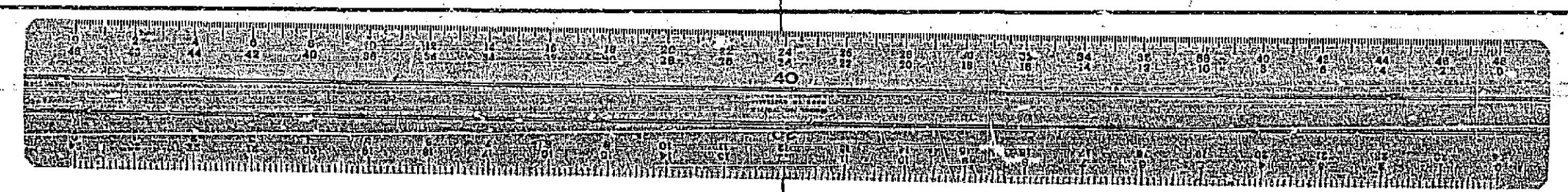


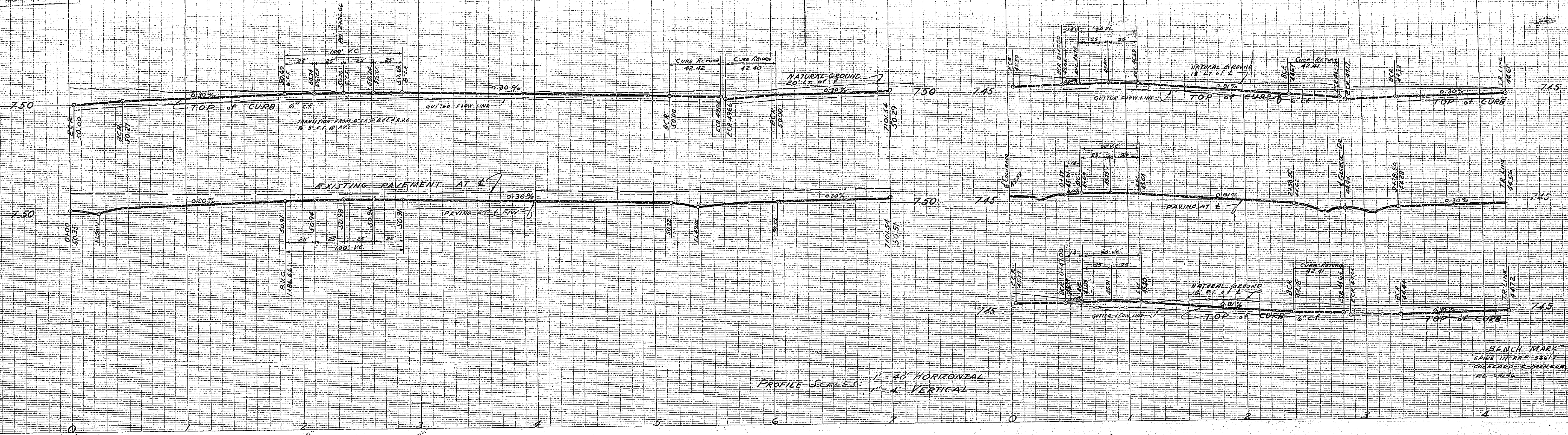
FOR TYPICAL CROSS SECTION  
SEE SHEET NO. 6

PROPERTY OF  
CITY OF RIVERSIDE  
DEPT. OF PUBLIC WORKS  
ENGINEERING DIVISION

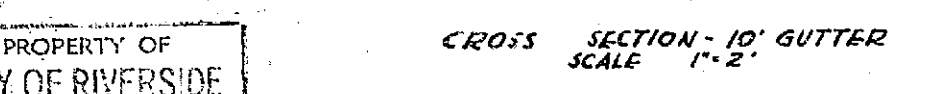
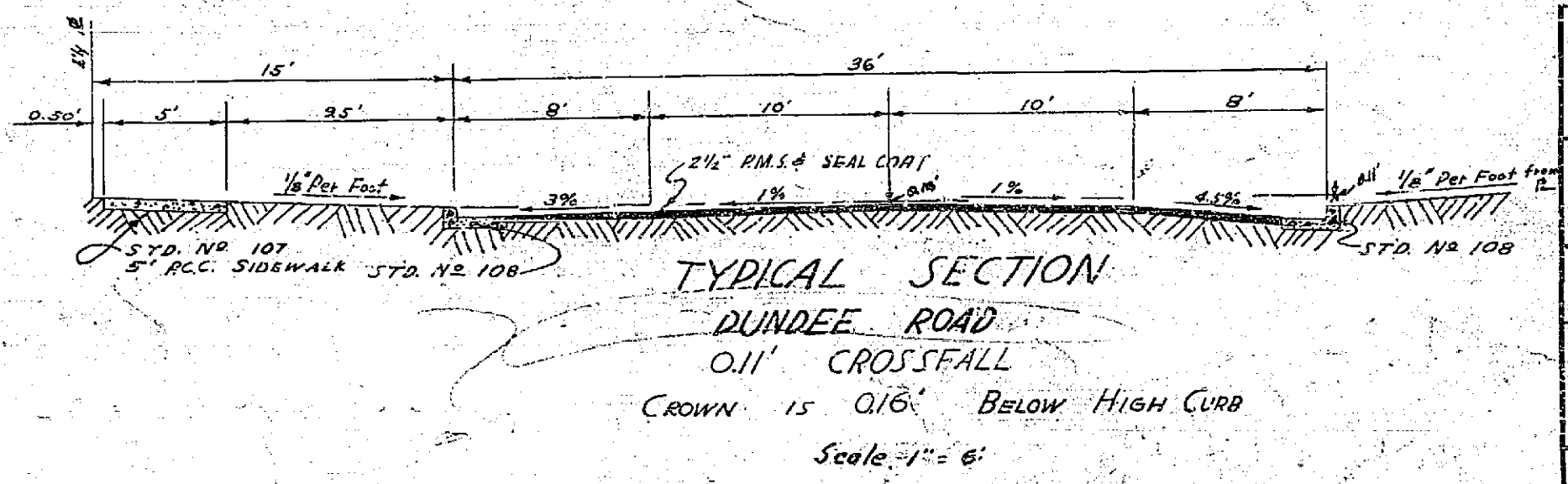
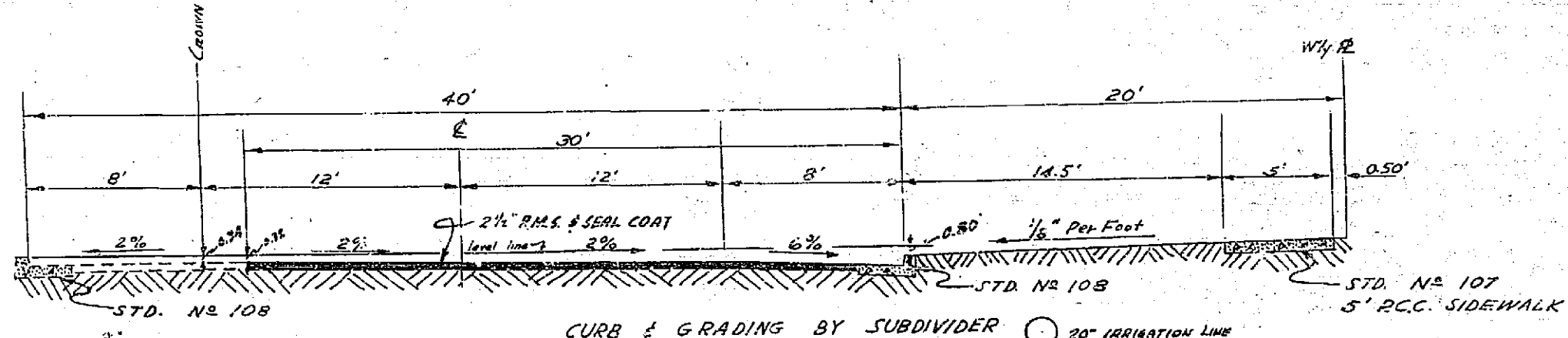
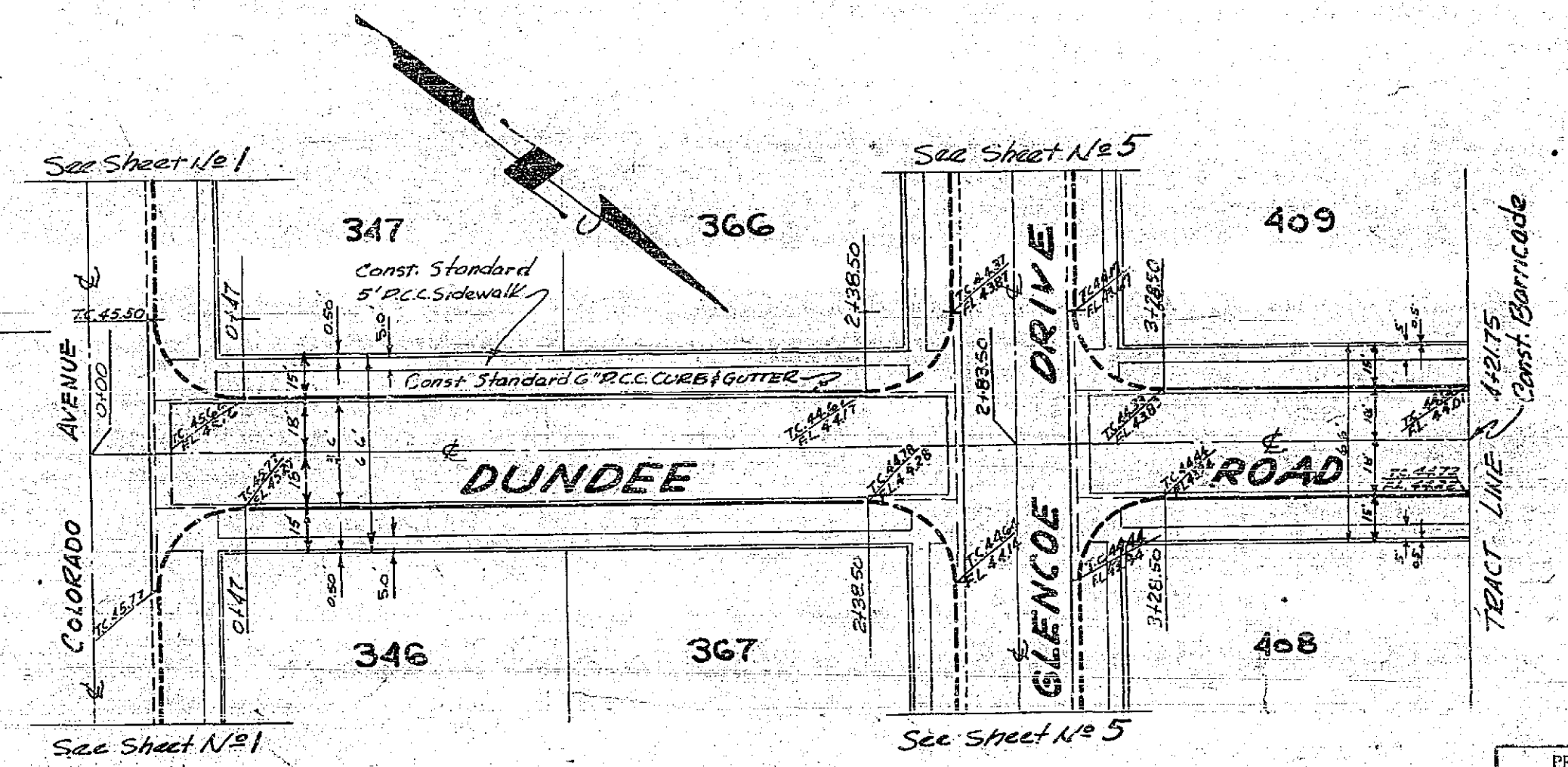
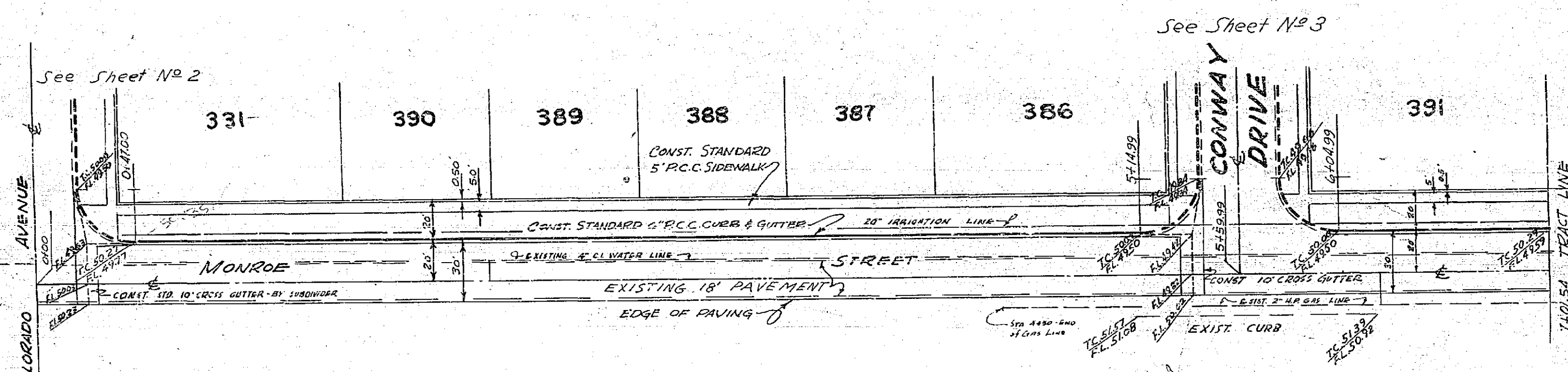
PROPERTY OF  
CITY OF RIVERSIDE  
DEPT. OF PUBLIC WORKS  
ENGINEERING DIVISION

L. FREDERICK PACK  
 R.F. No. 7448  
 COVINA, CALIFORNIA  
 APPROVED BY *[Signature]* DATE 2/23/77  
 CITY OF RIVERSIDE, CALIFORNIA  
 DEPARTMENT OF PUBLIC WORKS  
 STREET PLAN & PROFILE  
 BROOKTON HEIGHTS - NO. 6  
 GLENCOE DRIVE - From Monticello Avenue  
 To 250' East of  
 Monticello Avenue  
 HORIZ. SCALE 1"=40' VERT. SCALE 1"=4'  
 APPROVED BY *[Signature]*  
 Director of Public Works  
 DATE 2/23/77 NO. R-115  
 SHEET 5 OF 6





PROFILE SCALES:  
1" = 40' HORIZONTAL  
1" = 4' VERTICAL



PROPERTY OF  
CITY OF RIVERSIDE  
DEPT. OF PUBLIC WORKS  
ENGINEERING DIVISION

L.FREDERICK PACK  
R.E. 7448  
COVINA, CALIFORNIA  
APPROVED BY *[Signature]* DATE 2-21-17

CITY OF RIVERSIDE, CALIFORNIA  
DEPARTMENT OF PUBLIC WORKS

STREET PLAN & PROFILE  
BROCKTON HEIGHTS NO. 6  
MONROE STREET From Colorado Avenue To North Tract Line  
DUNDEE ROAD From Colorado Avenue To North Tract Line

HORIZ. SCALE 1" = 40' VERT. SCALE 1" = 4'

APPROVED BY *[Signature]*  
Director of Public Works  
DATE 4/21/17

NO. R-115  
SHEET 4 OF 6