

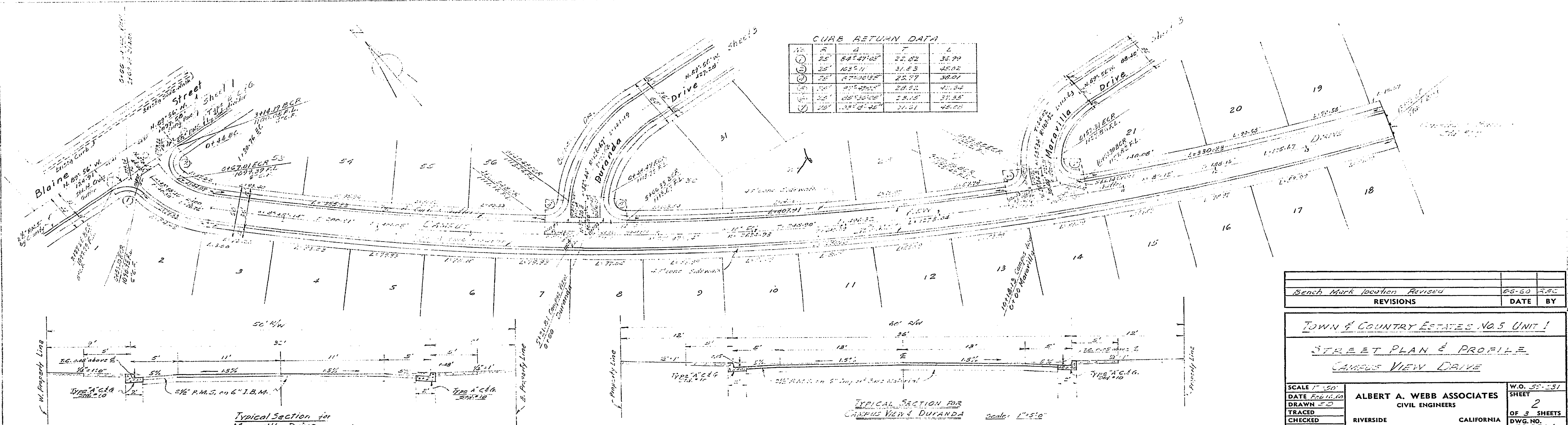


DATE: 5/21/60  
 DRAWN BY: J.W.B.  
 CHECKED BY: J.W.B.  
 F.B. 5/21/60

PROFILE  
 DATE: 5/21/60  
 DRAWN BY: J.W.B.  
 CHECKED BY: J.W.B.  
 F.B. 5/21/60

CURB RETURN DATA

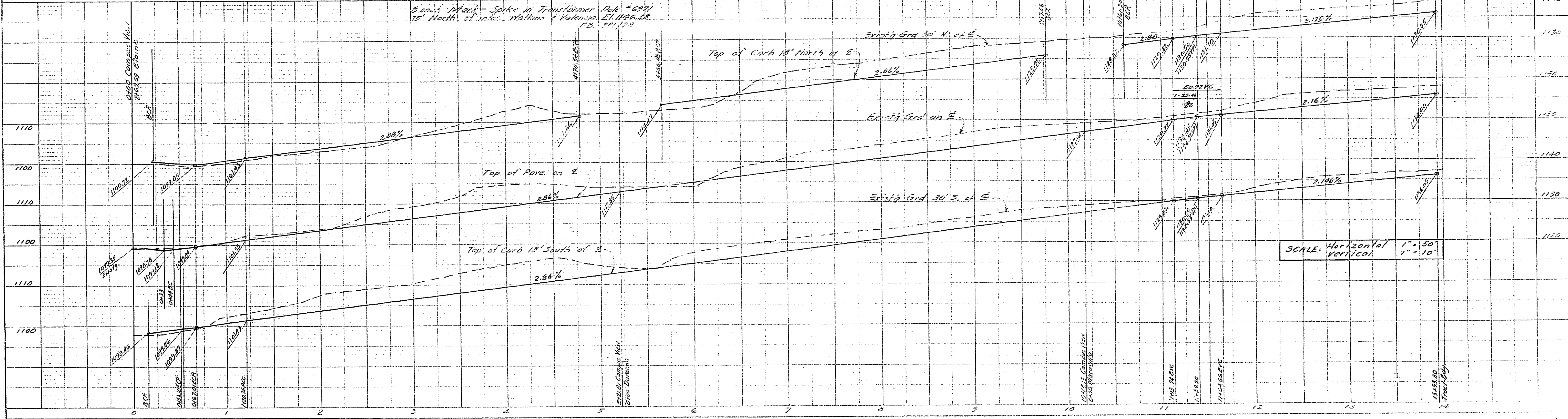
Station	Angle	Radius	Chord	Offset
15	25'	84° 47' 00"	21.02	36.79
16	25'	102° 5' 11"	21.53	45.02
17	25'	87° 00' 15"	22.77	38.07
18	25'	87° 00' 15"	22.77	38.07
19	25'	102° 5' 11"	21.53	45.02
20	25'	84° 47' 00"	21.02	36.79



Bench Mark location Revised	58-60	J.W.B.
REVISIONS	DATE	BY
TOWN & COUNTRY ESTATES NO. 5 UNIT 1		
STREET PLAN & PROFILE		
CAMPUS VIEW DRIVE		
SCALE 1" = 50'	ALBERT A. WEBB ASSOCIATES	W.O. 59-191
DATE 5/21/60	CIVIL ENGINEERS	SHEET
DRAWN J.W.B.	RIVERSIDE CALIFORNIA	2
TRACED		OF 3 SHEETS
CHECKED		DWG. NO.
F.B. 5/21/60		59-231A

Typical Section for Maravilla Drive scale: 1" = 5'-0"

Typical Section for Campus View & Duianda scale: 1" = 5'-0"



SCALE: Horizontal 1" = 50' Vertical 1" = 10'

DATE: 5/21/60  
 DRAWN BY: J.W.B.  
 CHECKED BY: J.W.B.  
 F.B. 5/21/60

731-A  
 R-1171

