

# RIVERSIDE CALIFORNIA



DEPARTMENT OF PUBLIC WORKS

## MADISON STREET Evans to Victoria

SELECT SYSTEM PROJECT NO. 323  
LENGTH OF PROJECT = 3225 00 Feet = 0.611 Mile

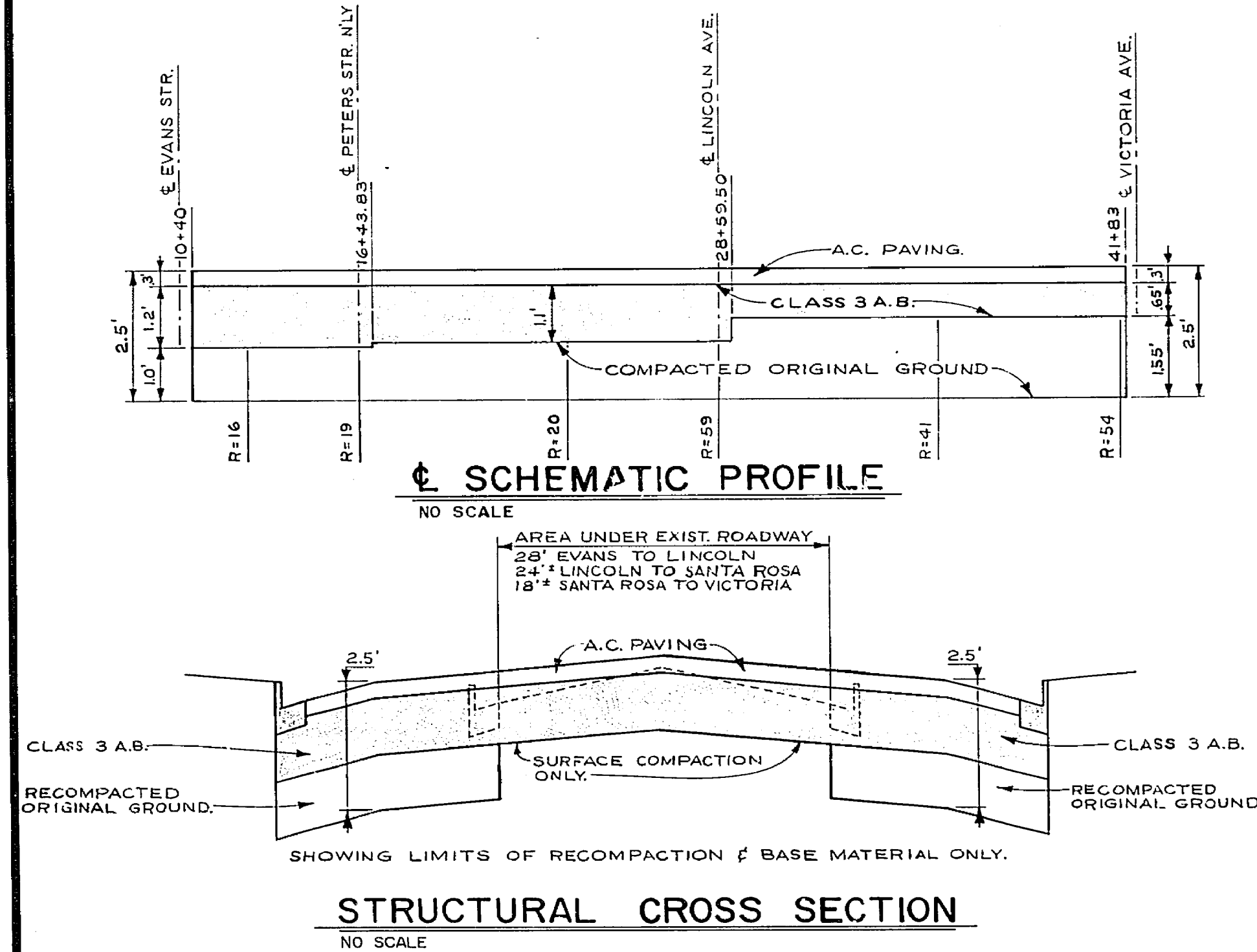
INDEX	
SHEET 1	TITLE SHEET
" 2	TYPICAL CROSS SECTIONS
" 3	PLAN & PROFILE STA. 8+00 TO STA. 13+00
" 4	" " " STA. 13+00 TO STA. 18+00
" 5	" " " STA. 18+00 TO STA. 23+50
" 6	" " " STA. 23+50 TO STA. 29+00
" 7	" " " STA. 29+00 TO STA. 36+00
" 8	" " " STA. 36+00 TO STA. 43+00
" 9	DETAILED PLAN "A" & "B"
" 10	" " " "C" & "D"

**STORM DRAIN**  
EVANS TO LINCOLN  
DWG. NO. D-148

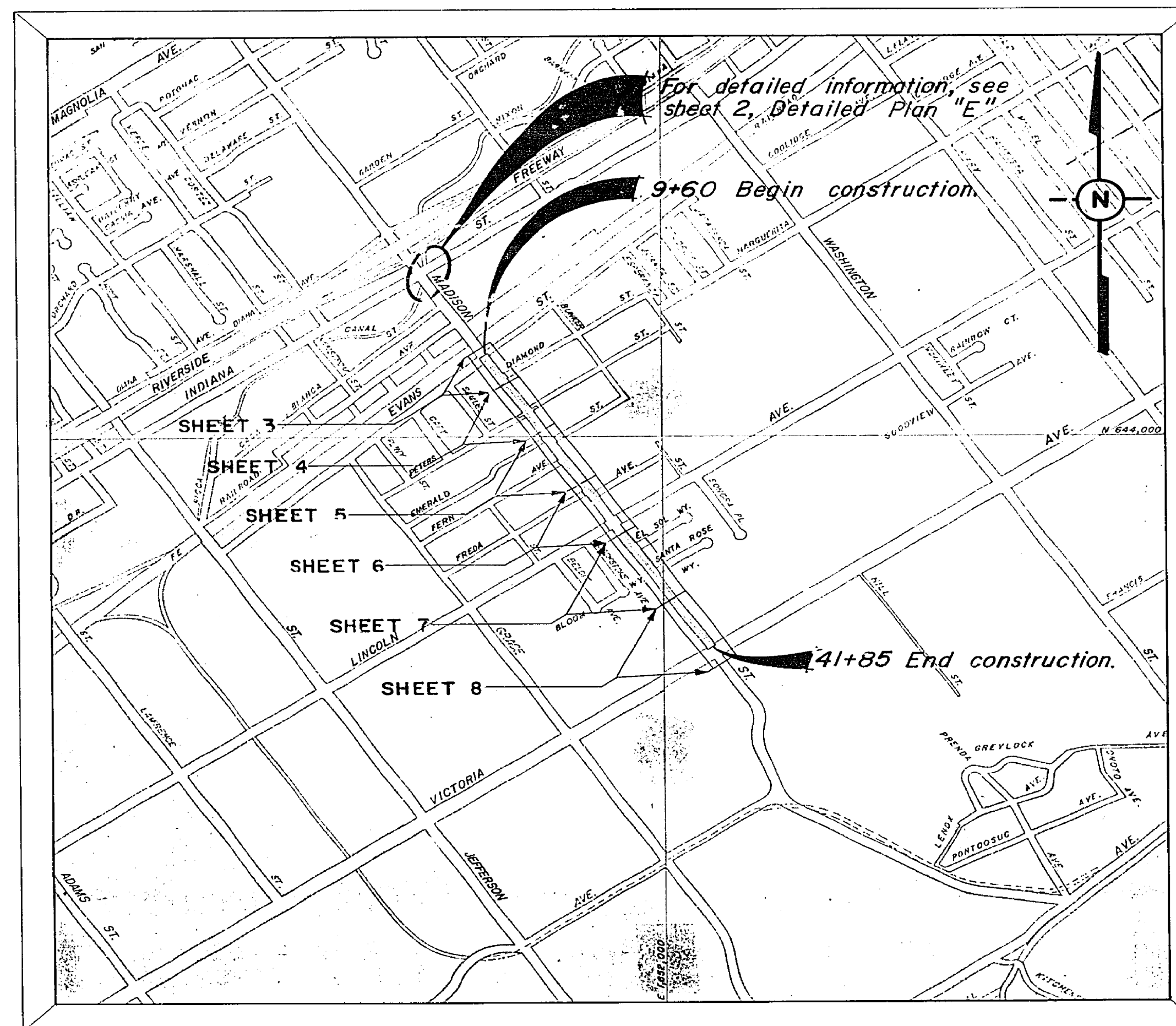
SHEET 1	PLAN & PROFILE	STA. 9+00 TO STA. 13+00
" 2	" " "	STA. 13+00 TO STA. 18+00
" 3	" " "	STA. 18+00 TO STA. 23+50
" 4	" " "	STA. 23+50 TO STA. 29+00
" 5	" " "	ON LINCOLN AVE., BUNKER ST. TO MADISON ST.

**STORM DRAIN LINCOLN AVENUE**  
BUNKER ST. TO MADISON ST.  
DWG. NO. D-148-A

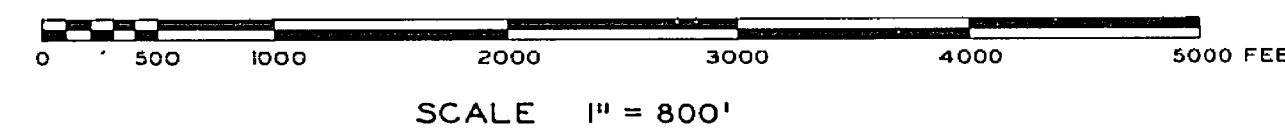
SHEET 1	PLAN & PROFILE	STA. 0+00 TO STA. 7+00
---------	----------------	------------------------



DESIGN DATA		
Pavement	10 years	T.I. = 6.5
Base	20 years	T.I. = 7.5



PROJECT LOCATION PLAN



### CONSTRUCTION LEGEND

	CONSTRUCT CURB & GUTTER PER C/R STD. DWG. 200		CONSTRUCT GRADED WALK-WAY WITH 0.30' CLASS 3 A.B. AND SOIL STERILANT. TYPICAL FOR ALL AREAS EXCEPT WHERE CONCRETE OR A.C. WILL BE PLACED.
	CONSTRUCT DRIVEWAY APPROACH PER C/R STD. DWG. 302		STORM DRAIN
	CONSTRUCT SIDEWALK PER C/R STD. DWG. 325 & 350		REMOVE TREE CLASS SIZE
	CONSTRUCT A.C. OVERLAY		TRANSPLANT TREE NO CLASS SIZE
	REMOVE EXISTING A.C. & CONCRETE AS NOTED.		REMOVE TREE BOX, BOX IS 6" DIA. NO CLASS SIZE
	ADJUST EXISTING MANHOLE TO GRADE.		REMOVE TREE NO CLASS SIZE, COVERED UNDER CLEARING & GRUBBING
	CONSTRUCT 0.30' A.C. OVER 0.65' CLASS 3 A.B.		SECTION LETTER SHEET NUMBER
	CONSTRUCT 0.30' A.C. OVER 1.20' CLASS 3 A.B.		CONSTRUCT 0.30' A.C. OVER 0.50' CLASS 3 A.B.
	CONSTRUCT 0.30' A.C. OVER 1.10' CLASS 3 A.B.		CONSTRUCT 0.17' A.C. OVER NATIVE GROUND.
	CENTER LINE		NEW TOP OF SLOPE
	RIGHT-OF-WAY LINE		NEW TOE OF SLOPE
	SUBDIVISION LOT LINE		NEW FLOW LINE
	NEW UNDERGROUND TELEPHONE CONDUIT BY OTHERS.		NEW LOCATION OF POWER & TELE. POLES BY OTHERS.

### EXISTING CULTURE & UNDERGROUND LEGEND

EXISTING UNDERGROUND UTILITIES			
	SANITARY SEWER		TELEPHONE CONDUIT
	WATER LINE		STREET LIGHTING
	STORM DRAIN		TRAFFIC SIGNAL
	CULVERT		FIRE ALARM
	IRRIGATION LINE		ABANDONED UTILITY
	GAS LINE		

### EXISTING TOPOGRAPHY

	SANITARY SEWER MH		POWER POLE		RAILROAD TRACKS
	SANITARY SEWER CLEANOUT		GUY POLE		RAILROAD SIGN
	STORM DRAIN MH		POLE & GUY ANCHOR		RAILROAD SIGNAL
	IRRIGATION WEIR		PULL BOX		
	WATER MH		TRAFFIC SIGN		
	GAS MH		PARKING METER		
	ELECTRIC MH		FIRE ALARM BOX		STREET LIGHT
	TELEPHONE MH OR VAULT				TRAFFIC SIGNAL
	WATER METER				TRAFFIC SIGNAL ON MAST ARM
	FIRE HYDRANT		GAS METER		TRAFFIC CONTROL BOX
	SPRINKLER HEAD		MAIL BOX		TRAFFIC SIGNAL DETECTOR
	WATER VALVE		ELECTICAL CONDUIT IN CROSS SECTION		PEDESTRIAN CONTROL FOR TRAFFIC SIGNAL
	GAS VALVE				
	HYDRANT OR FAUCET				
	CONCRETE		TREE SHOWING DIAMETER IN INCHES		
	ASPHALT		PALM SHOWING DIAMETER IN INCHES		
	EDGE OF PAVEMENT		SHRUBBERY		
	BUILDING		TREE STUMP DIAMETER IN INCHES		
	UNDERGROUND OR OVERHANGING STRUCTURE				
	BLOCK WALL		TOP OF SLOPE		
	BOARD FENCE		TOE OF SLOPE		
	WIRE FENCE		DIRECTION OF FLOW		
	CHAIN LINK FENCE				

**- CAUTION -**  
PACIFIC TELEPHONE  
CABLES UNDERGROUND  
BEFORE EXCAVATING

CALL COLLECT: 7:30 A.M. to 5 P.M. & Holidays

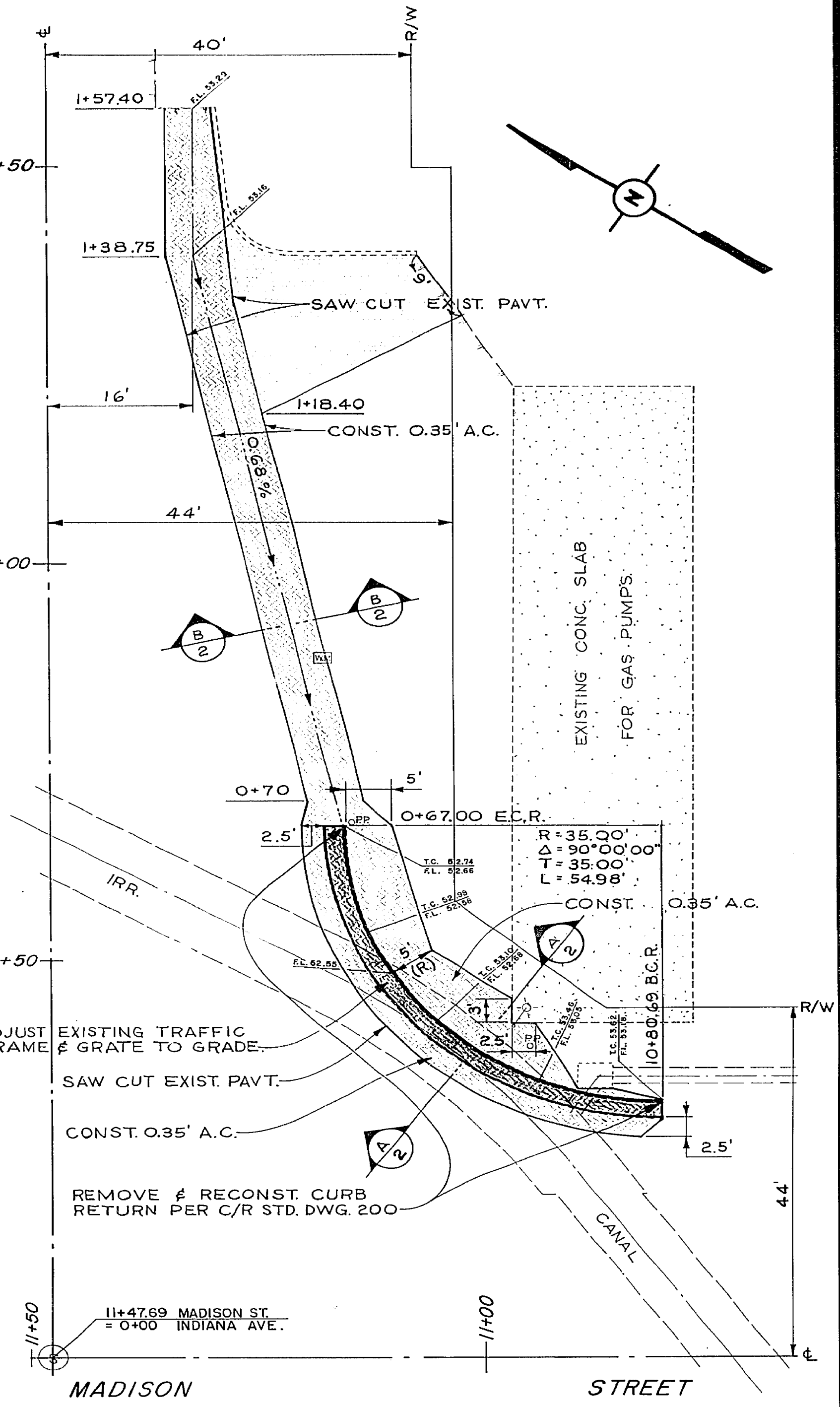
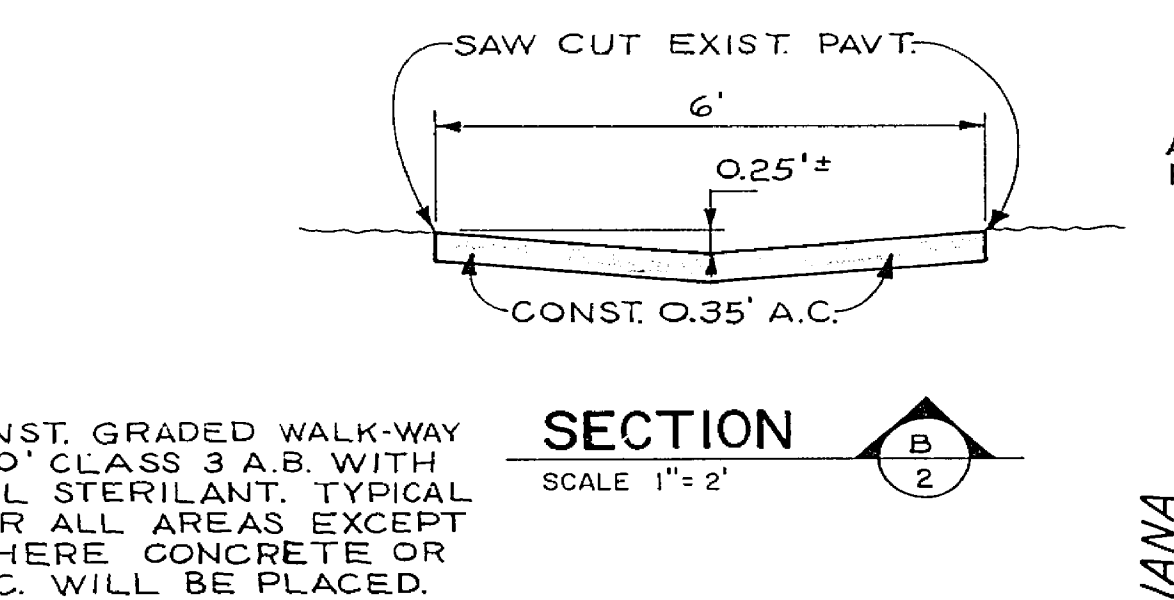
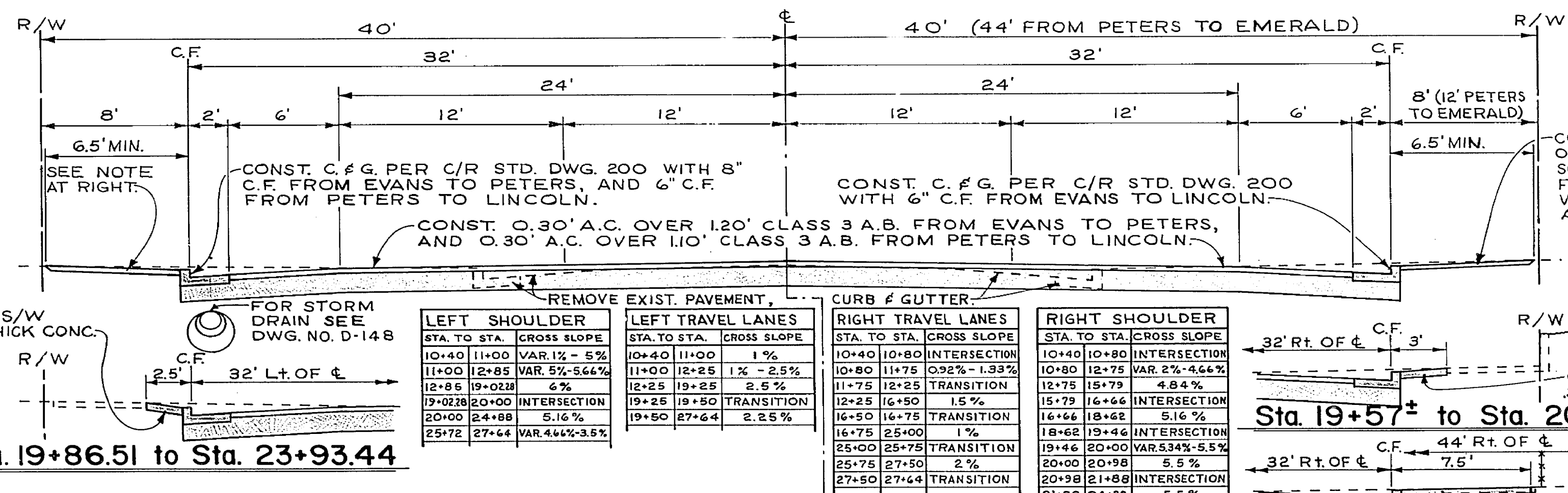
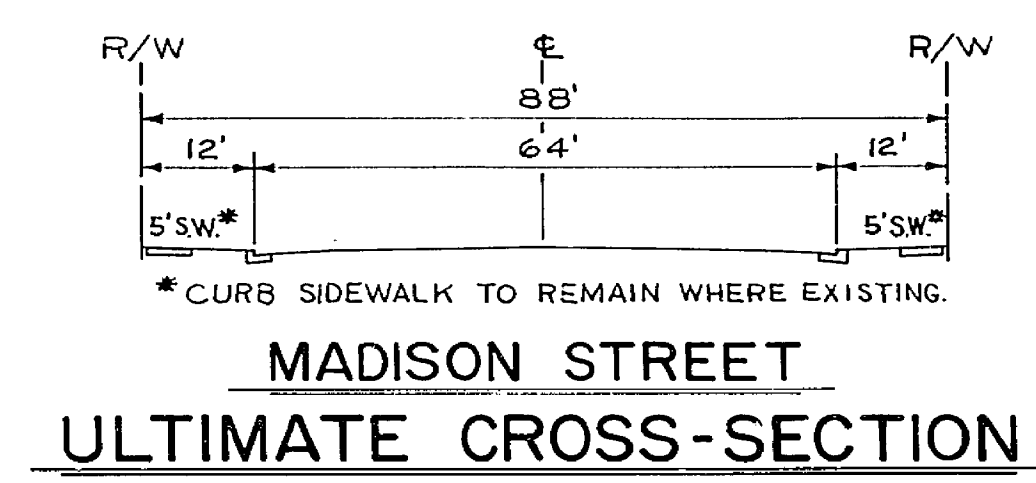
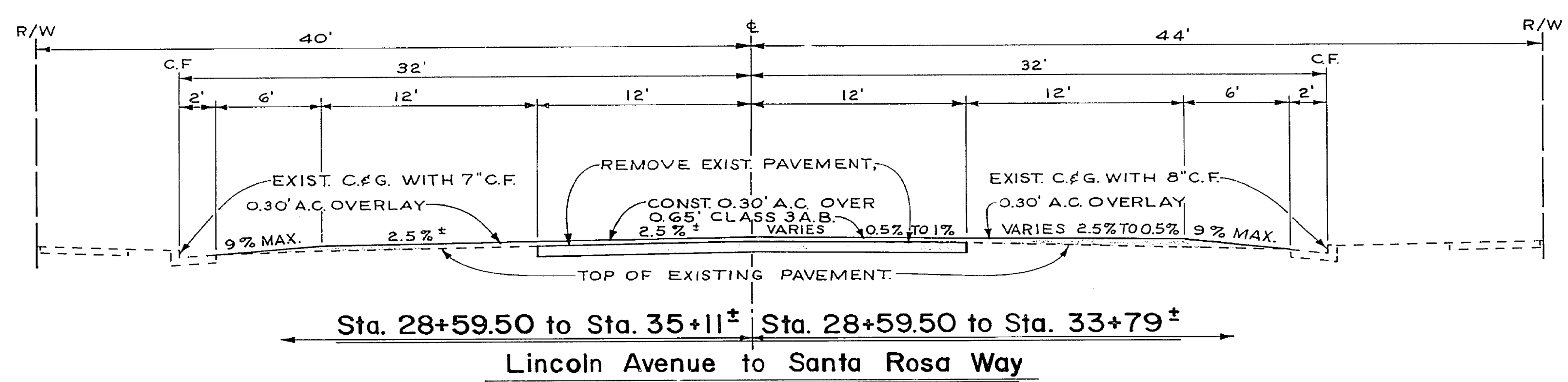
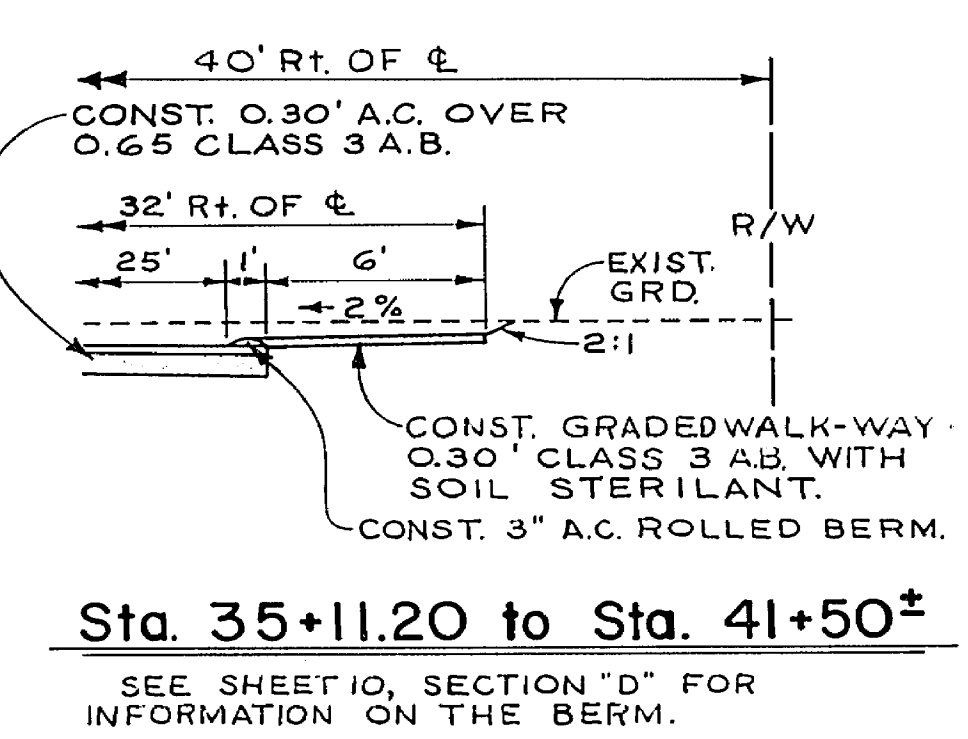
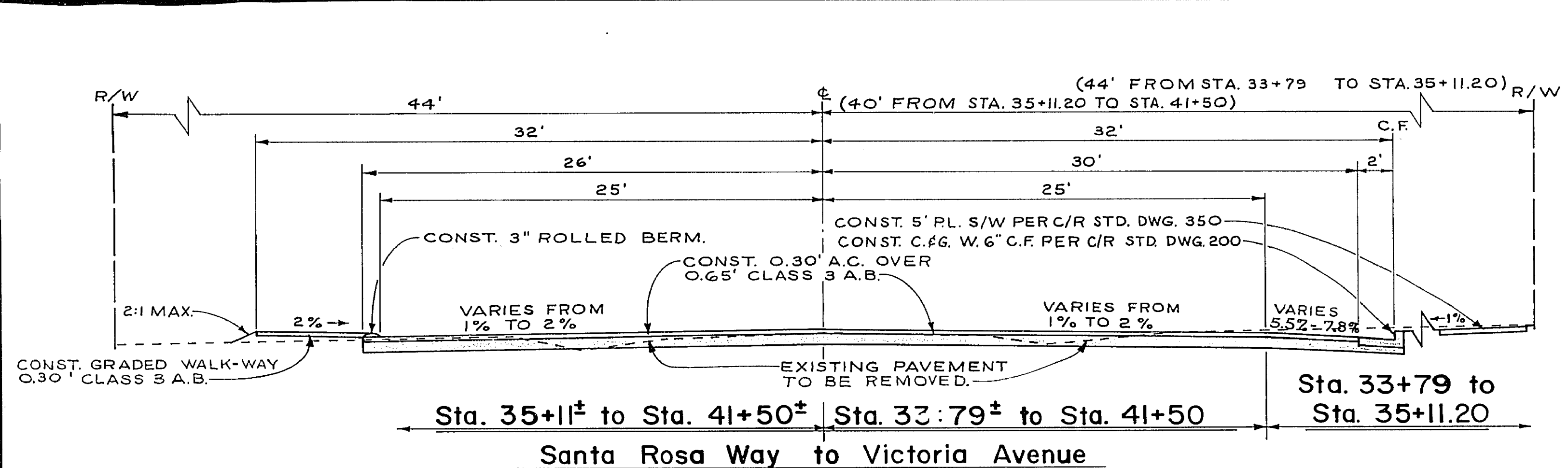
Orange County	714-633-0811	714-527-6606
Riverside County	714-684-0071	714-517-6606
Inyo County	714-684-0071	714-527-6606
San Bernardino County	714-684-0071	714-517-6606
Los Angeles County	213-621-3111	24 HOUR SERVICE
Ventura County	213-621-3111	
San Diego County	714-298-0595	714-232-0027

FOR FREE CABLE LOCATING SERVICE

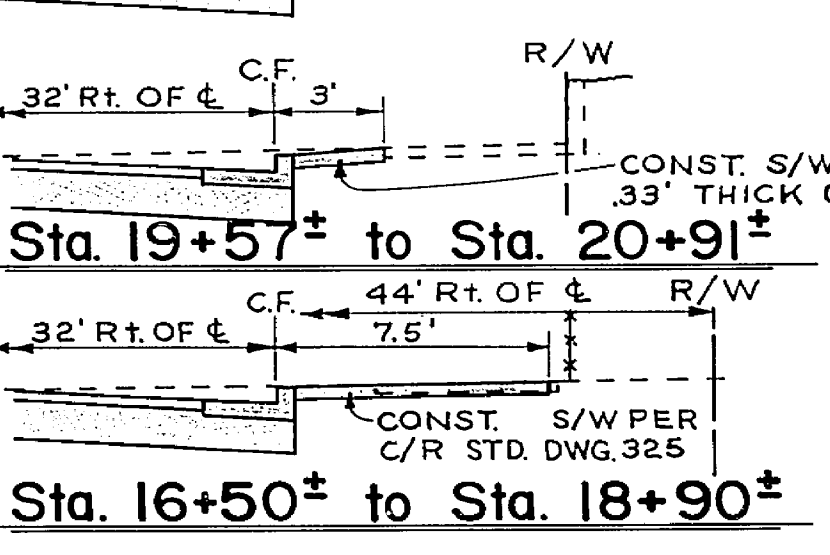
**MADISON STREET  
EVANS TO VICTORIA**

APPROVED BY	BY DATE	APPROVED BY	PROJECT NO. 3110
OFFICE ENGINEER		DIRECTOR OF PUBLIC WORKS	
TRAFFIC DIVISION			<b>R-1182</b>
ASSISTANT CITY ENG.		DATE	SHEET 1 OF 10

DESIGNED BY J.S. DRAWN BY JEG. CHECKED BY DC.H. S.S. NO. 323



LEFT SHOULDER		LEFT TRAVEL LANES		RIGHT TRAVEL LANES		RIGHT SHOULDER	
STA. TO STA.	CROSS SLOPE	STA. TO STA.	CROSS SLOPE	STA. TO STA.	CROSS SLOPE	STA. TO STA.	CROSS SLOPE
10+40	11+00	11+00	11+00	10+40	10+80	10+80	10+80
11+00	12+85	11+00	12+25	11+75	12+25	11+75	12+25
12+85	19+00	12+25	19+25	12+25	16+50	12+25	16+50
19+00	20+00	19+25	19+50	16+50	16+75	16+50	16+75
20+00	24+88	19+50	27+44	16+75	25+00	16+75	25+00
24+88	27+44	27+44	27+44	25+00	25+75	25+00	25+75
27+44		27+44		25+75	27+50	25+75	27+50
		27+44		27+50	27+44	27+50	27+44



TYPICAL CROSS SECTIONS

SCALE HORIZ. 1"=5'  
VERT. 1"=5'

* AS BUILT <i>DCH</i> DESIGNED BY <i>D.S.</i> DRAWN BY <i>J.P.S.</i> CHECKED BY <i>J.C.H.</i>	CITY OF RIVERSIDE, CALIFORNIA DEPARTMENT OF PUBLIC WORKS APPROVED BY <i>[Signature]</i> DATE <i>11/2/77</i> TRAFFIC DIVISION ASSISTANT CITY ENGINEER <i>[Signature]</i> DATE <i>11/2/77</i>	MADISON STREET EVANS TO VICTORIA Typical Cross Sections, Plan & Sections SCALE AS SHOWN	PROJECT NO. 3110 <b>R-1182</b> SHEET 2 OF 10 S.S. PROJECT NO. 323
--	--	---	--

865  
864  
863  
862  
861  
860

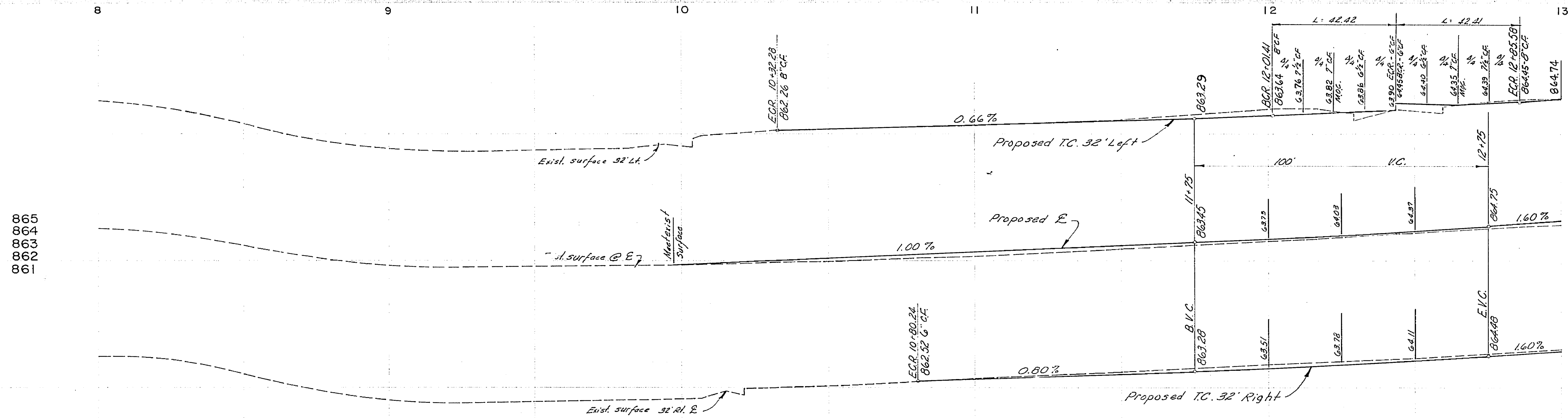
865  
864  
863  
862  
861

865  
864  
863  
862  
861  
860

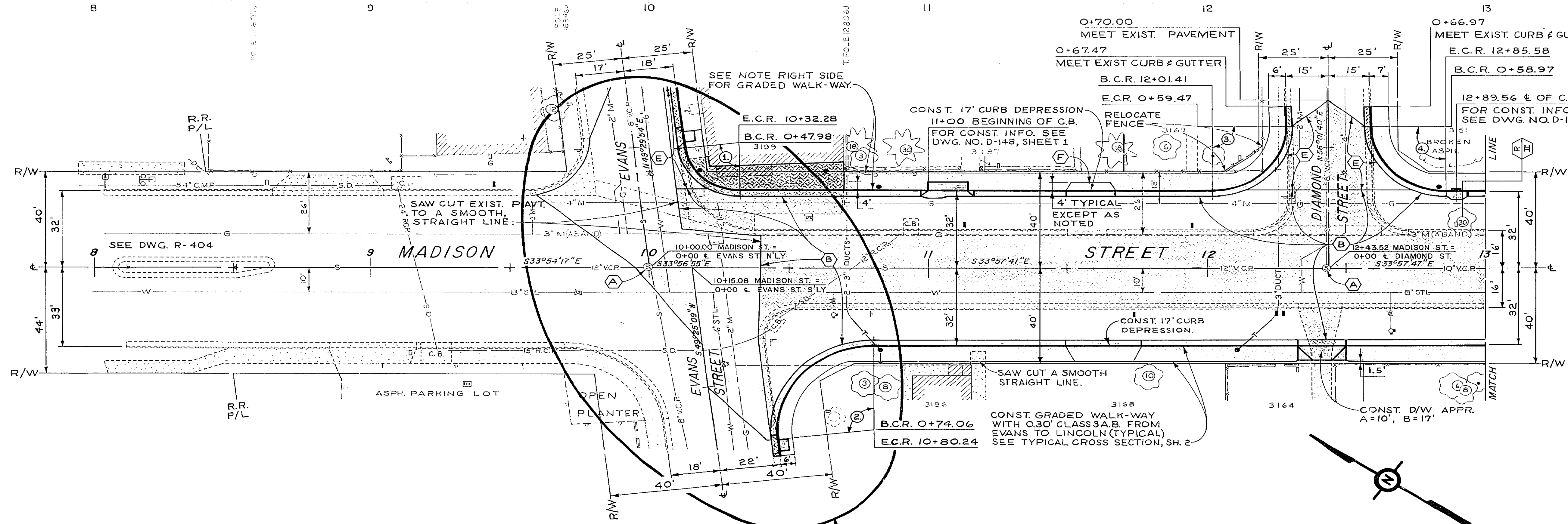
865  
864  
863  
862

865  
864  
863  
862

866  
865  
864  
863  
862



"SEE STORM DRAIN DWG. NO. D-148, SHEET 1, FOR DEPTH OF UTILITIES."



B.M. ELEV. 861.497 "PK" NAIL IN NW CB. RET. OF MADISON AND EVANS.  
 B.M. ELEV. 864.028 "PK" NAIL IN LEAD IN NLY CB. OF DIAMOND STREET 75' ELY OF MADISON ST. F.B. 729/49.

CURB RETURN DATA				
①	R	Δ	T	L
①	20.00'	83°26'49"	17.83'	29.13'
②	35.00'	96°37'10"	39.30'	59.02'
③	27.00'	90°00'39"	27.00'	42.42'
④	27.00'	89°59'27"	27.00'	42.41'

**- CAUTION -**  
**PACIFIC TELEPHONE**  
**CABLES UNDERGROUND**  
 BEFORE EXCAVATING  
 CALL COLLECT

After Hours & Holidays  
 7:30 A.M. to 5 P.M.  
 Orange County 714-222-7471  
 Riverside County 714-942-0271  
 San Diego County 714-442-0271  
 San Bernardino County 714-842-0271  
 Los Angeles County 714-222-7471  
 Ventura County 714-222-7471

FOR FREE CABLE LOCATING SERVICE

FOR DETAILED INFORMATION, SEE SHEET 9, DETAILED PLAN "A"

\* AS BUILT 2-7-68

CITY OF RIVERSIDE, CALIFORNIA  
 DEPARTMENT OF PUBLIC WORKS

**MADISON STREET  
 EVANS TO VICTORIA  
 Plan & Profile  
 Sta. 8+00 to Sta. 13+00**

R-1182

3 10  
 4' S.S. PROJECT NO. 323

870  
869  
868  
867  
866  
865  
864

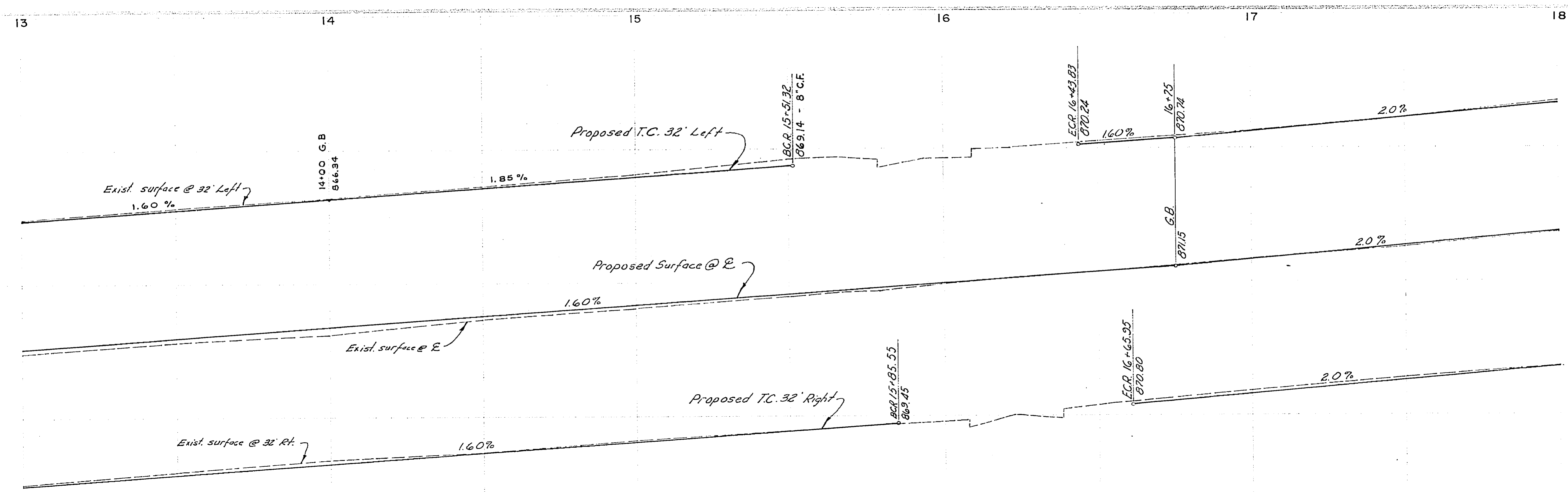
870  
869  
868  
867  
866  
865  
864

870  
869  
868  
867  
866  
865  
864

874  
873  
872  
871  
870

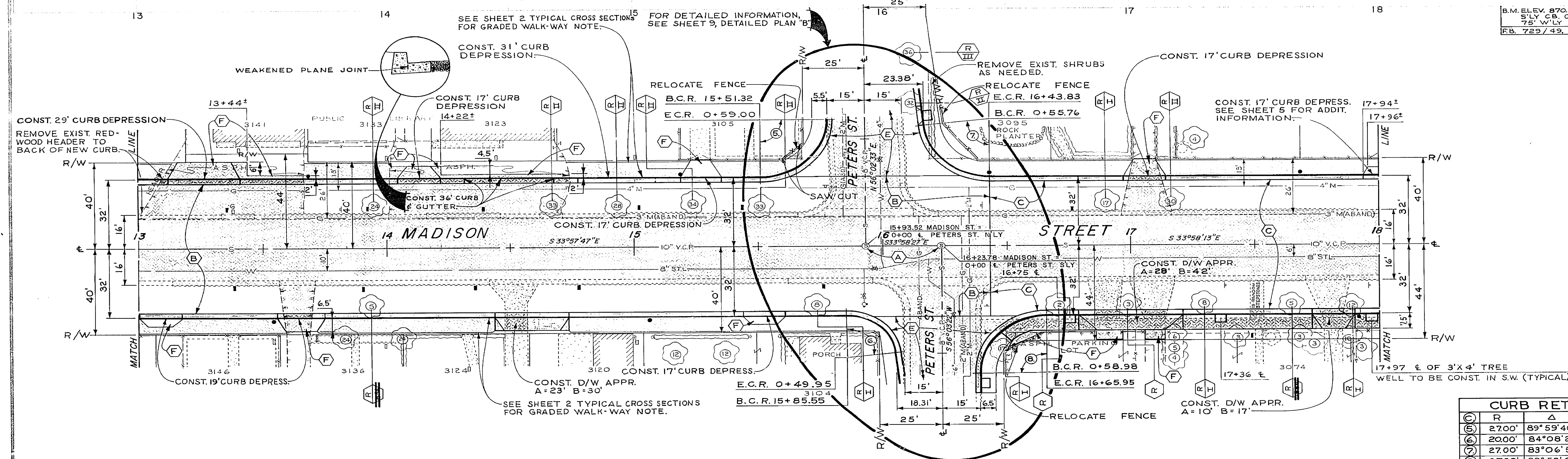
874  
873  
872  
871  
870

874  
873  
872  
871  
870

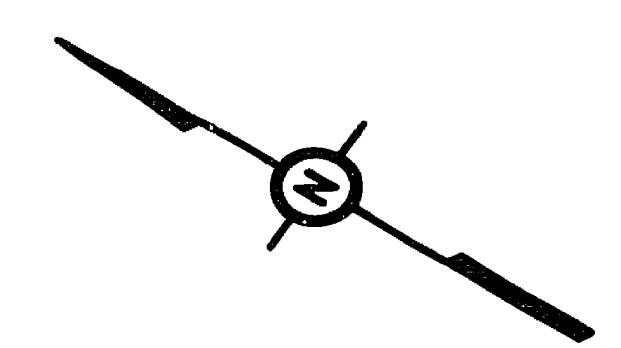


"SEE STORM DRAIN DWG. NO. D-148, SHEET 2, FOR DEPTH OF UTILITIES."

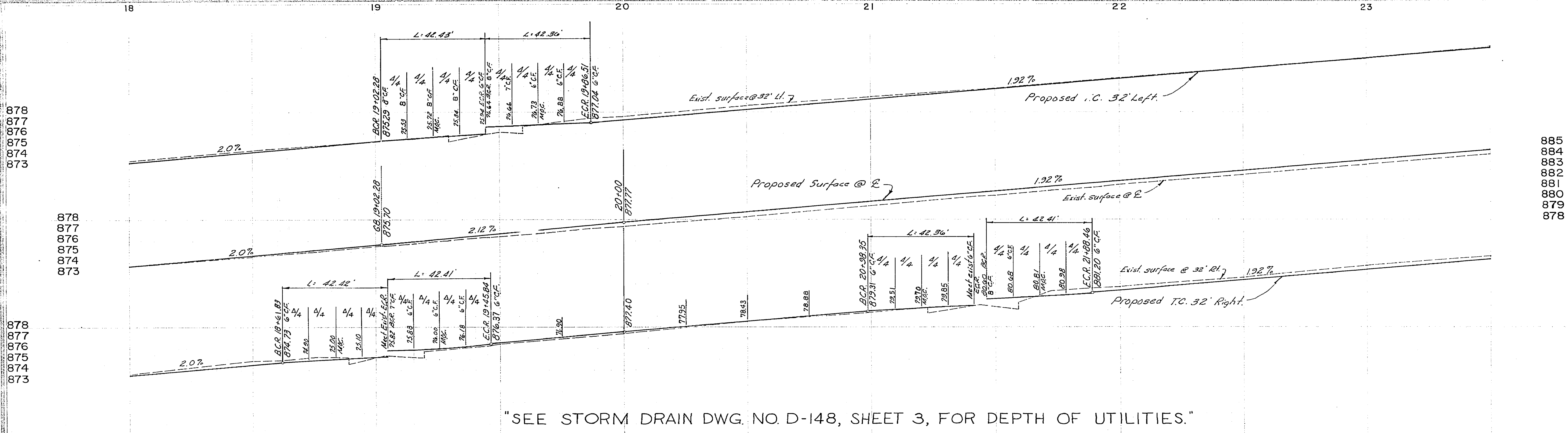
B.M. ELEV. 870.520 "PK" NAIL IN 3"LY CB. OF PETERS STREET 75' W'LY OF MADISON STREET. F.B. 729/49.



CURB RETURN DATA				
Station	R	Δ	T	L
(5) 2700'	89°59'40"	27.00'	42.41'	
(6) 2000'	84°08'25"	18.05'	29.37'	
(7) 2700'	83°06'53"	23.94'	39.17'	
(8) 2700'	85°58'25"	26.99'	42.40'	



# AS BUILT	DCH	2-7-68	CITY OF RIVERSIDE, CALIFORNIA DEPARTMENT OF PUBLIC WORKS	
DESIGNED BY S. DRAWN BY JMG. CHECKED BY JCK			APPROVED BY: [Signature]	MADISON STREET EVANS TO VICTORIA Plan & Profile Sta. 13+00 to Sta. 18+00
DATE: 5-23			DATE: 5-23	PROJECT NO. 3110 R-1182
S.S. PROJECT NO. 323			HORIZ. SCALE: 1" = 20' VERT. SCALE: 1" = 4'	



878  
877  
876  
875  
874  
873

878  
877  
876  
875  
874  
873

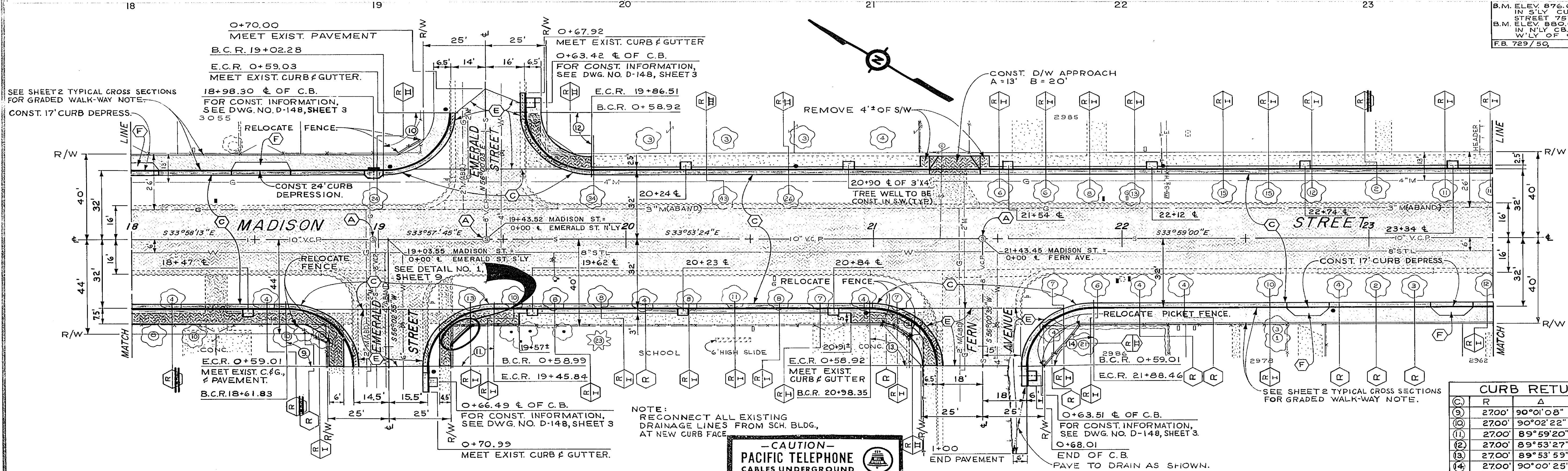
878  
877  
876  
875  
874  
873

885  
884  
883  
882  
881  
880  
879  
878

885  
884  
883  
882  
881  
880  
879  
878

885  
884  
883  
882  
881  
880  
879  
878

"SEE STORM DRAIN DWG. NO. D-148, SHEET 3, FOR DEPTH OF UTILITIES."



SEE SHEET 2 TYPICAL CROSS SECTIONS FOR GRADED WALK-WAY NOTE. CONST. 17" CURB DEPRESS.

0+70.00 MEET EXIST. PAVEMENT  
B.C.R. 19+02.28  
E.C.R. 0+59.03 MEET EXIST. CURB & GUTTER.  
18+98.30 ± OF C.B.  
FOR CONST. INFORMATION, SEE DWG. NO. D-148, SHEET 3

0+67.92 MEET EXIST. CURB & GUTTER  
O+63.42 ± OF C.B.  
FOR CONST. INFORMATION, SEE DWG. NO. D-148, SHEET 3

CONST. D/W APPROACH  
A = 13' B = 20'

B.M. ELEV. 876.675 "PK" NAIL IN S'LY CURB OF EMERALD STREET 75' E'LY OF MADISON ST.  
B.M. ELEV. 880.068 "PK" NAIL IN N'LY CB. FERN STREET 65' W'LY OF E. MADISON STREET.  
F.B. 729/50.

NOTE: RECONNECT ALL EXISTING DRAINAGE LINES FROM SCH. BLDG. AT NEW CURB FACE.

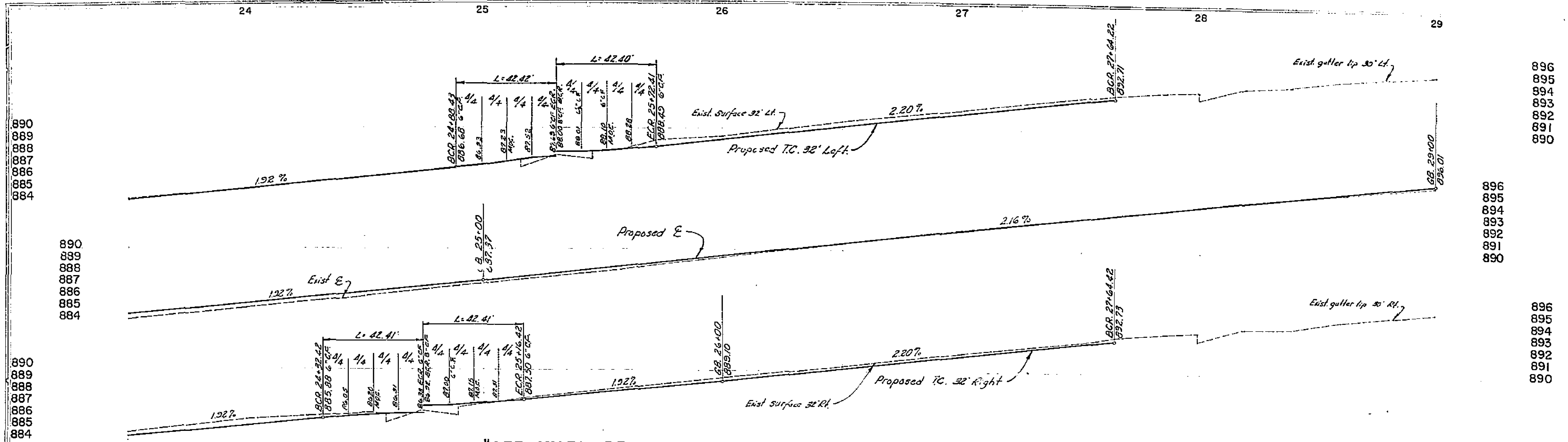
SEE SHEET 2 TYPICAL CROSS SECTIONS FOR GRADED WALK-WAY NOTE.

CURB RETURN DATA				
(C)	R	Δ	T	L
(9)	2700'	90°01'08"	27.01'	42.42'
(10)	2700'	90°02'22"	27.02'	42.43'
(11)	2700'	89°59'20"	26.99'	42.41'
(2)	2700'	89°53'27"	26.95'	42.36'
(3)	2700'	89°53'59"	26.95'	42.36'
(4)	2700'	90°00'25"	27.00'	42.41'

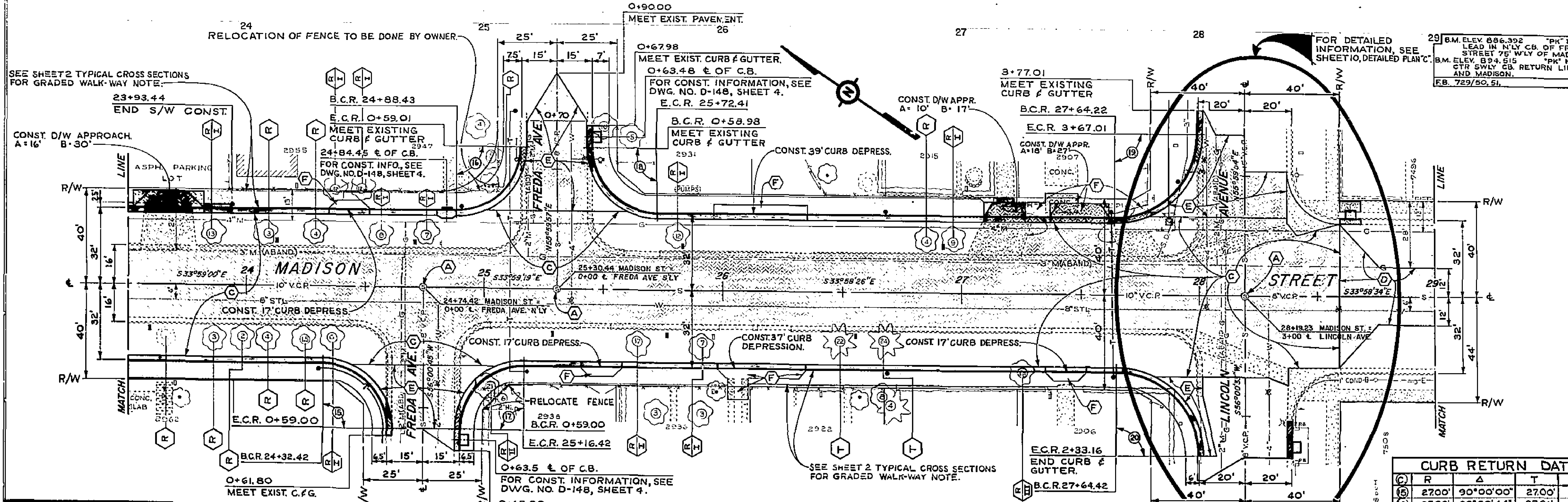
**- CAUTION -**  
PACIFIC TELEPHONE  
CABLES UNDERGROUND  
BEFORE EXCAVATING  
CALL COLLECT:  
7:30 A.M. to 5 P.M. & Holidays  
After Hours  
Orange County 714-633-0811 714-527-6606  
Riverside County 714-684-0071 714-527-6606  
Inyo County 714-664-0071 714-527-6606  
San Bernardino County 714-684-0071 714-527-6606  
Los Angeles County 213-621-3111 24 HOUR SERVICE  
Ventura County 213-621-3111 24 HOUR SERVICE  
San Diego County 714-298-0395 714-225-0027  
FOR FREE CABLE LOCATING SERVICE

AS BUILT 2-7-68  
CITY OF RIVERSIDE, CALIFORNIA  
DEPARTMENT OF PUBLIC WORKS  
APPROVED BY: [Signature]  
DATE: 8-2-67  
DESIGNED BY: J.S. DRAWN BY: J.P.G. CHECKED BY: J.C.H.

**MADISON STREET  
EVANS TO VICTORIA**  
Plan & Profile  
Sta. 18+00 to Sta. 23+50  
HORIZ. SCALE: 1" = 20'  
VERT. SCALE: 1" = 4'  
PROJECT NO. 3110  
**R-1182**  
SHEET 5 OF 10  
S.S. PROJECT NO. 323



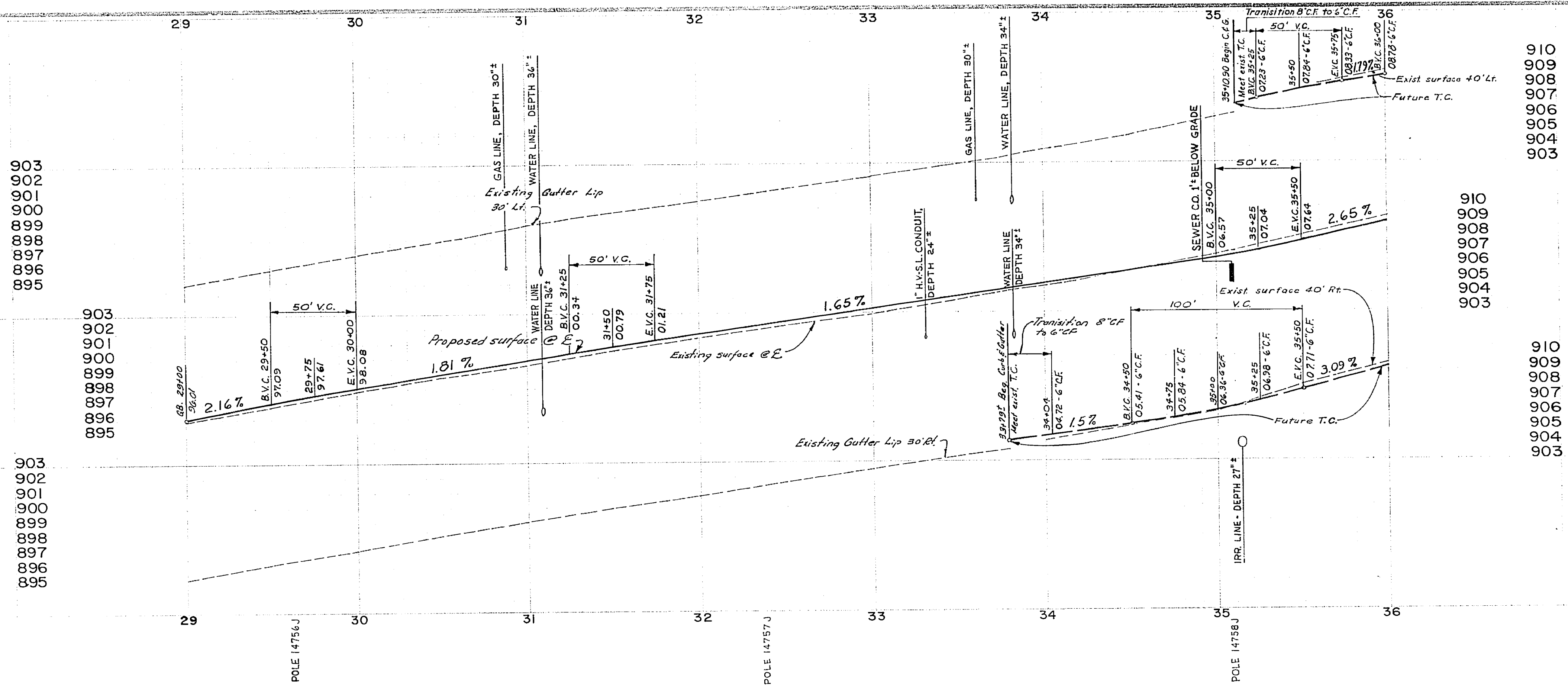
"SEE STORM DRAIN DWG. NO. D-148, SHEET 4, FOR DEPTH OF UTILITIES."



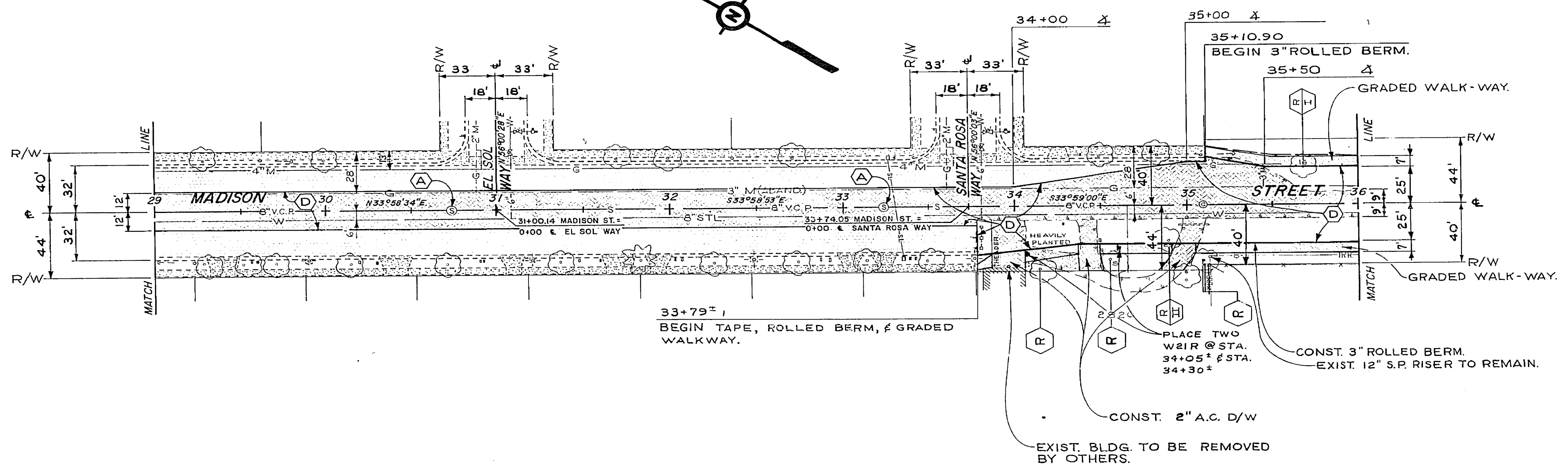
CURB RETURN DATA			
Station	R	Δ	L
2700'	90°00'00"	27.00'	42.41'
2700'	90°00'44"	27.01'	42.42'
2700'	90°00'00"	27.00'	42.41'
2700'	89°58'23"	26.99'	42.40'
3500'	90°01'40"	35.02'	54.99'
3500'	89°49'50"	34.90'	54.87'

**-CAUTION-**  
**PACIFIC TELEPHONE**  
**CABLES UNDERGROUND**  
 BEFORE EXCAVATING  
 CALL COLLECT  
 7:30 AM to 5 PM & Holidays  
 24 HOUR SERVICE  
 FOR FREE CABLE LOCATING SERVICE

# AS BUILT DCB	27-68	CITY OF RIVERSIDE, CALIFORNIA DEPARTMENT OF PUBLIC WORKS	<b>MADISON STREET</b> <b>EVANS TO VICTORIA</b>	PROJECT NO. 3110
APPROVED BY	DATE	APPROVED BY	Plan & Profile	R-1182
DESIGNED BY DS	DRAWN BY JPO	CHECKED BY DCB	Sta. 23+50 to Sta. 29+00	6 10
HORIZ SCALE 1" = 20'			S.S. PROJECT NO. 323	

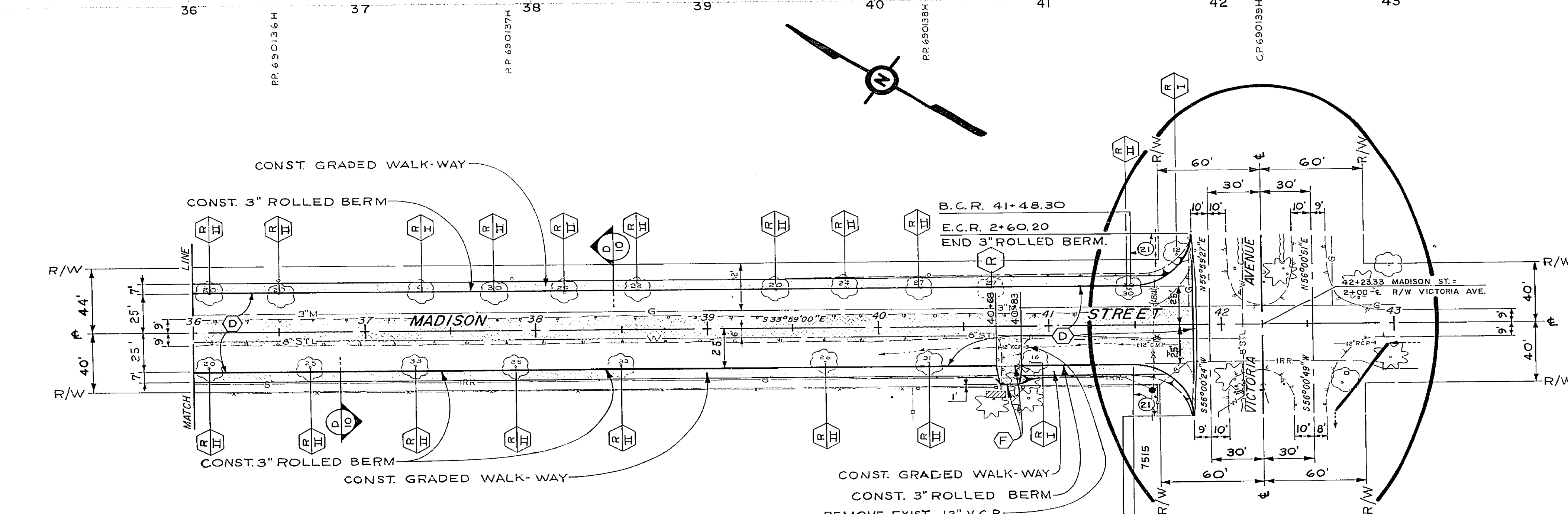
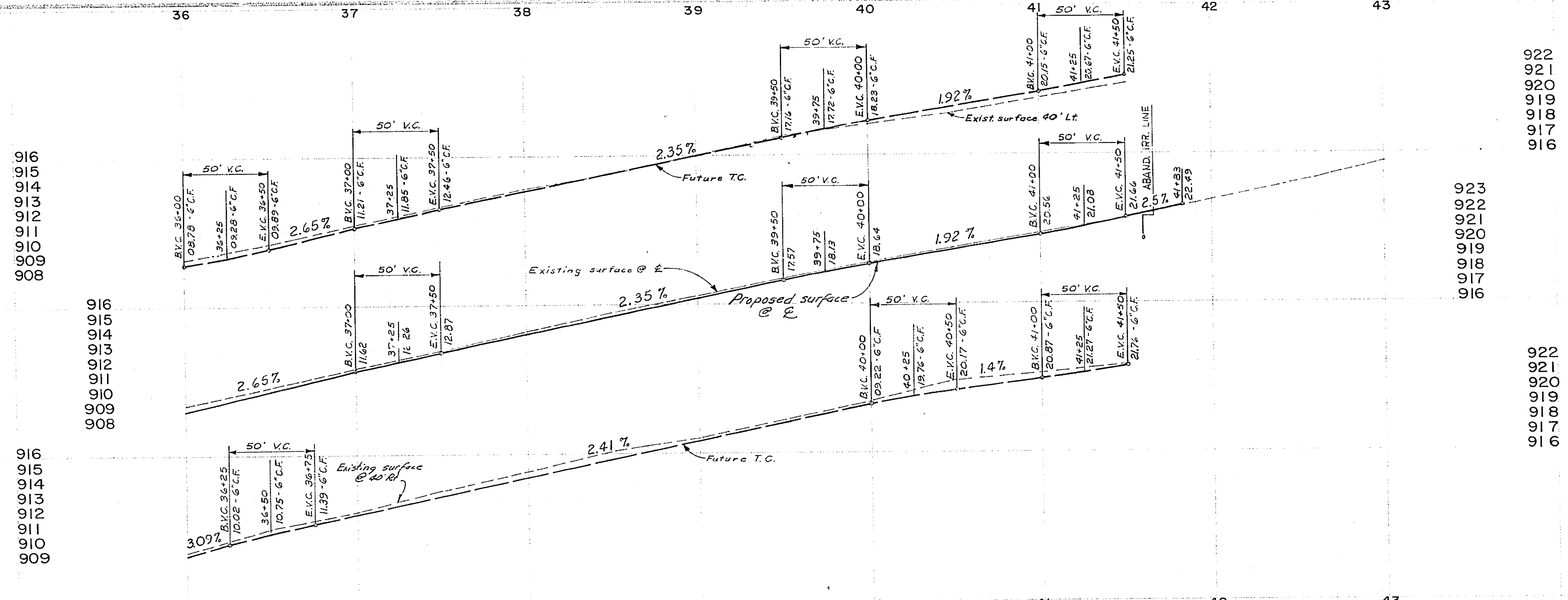


B.M. ELEV 894.515 SET "PK" NAIL IN CTR. SWLY CB. RETURN LINCOLN & MADISON.  
 B.M. ELEV 925.18 CHIS. X ON F.H. BOLT AT VICTORIA.  
 F.B. 729/51, 701/32



* AS BUILT <i>DCM</i>		2-7-68	CITY OF RIVERSIDE, CALIFORNIA DEPARTMENT OF PUBLIC WORKS		PROJECT NO. 3110	
APPROVED BY: <i>DCM</i>			DATE: 7-17-68	APPROVED BY: <i>DCM</i>		MADISON STREET EVANS TO VICTORIA
OFFICE ENGINEER			DATE: 7-17-68	DIRECTOR OF PUBLIC WORKS		
TRAFFIC DIVISION			DATE: 7-17-68	DATE: 6-23-67		Plan & Profile Sta. 29+00 to Sta. 36+00
DESIGNED BY: <i>DCM</i>			DRAWN BY: <i>JPG</i>	CHECKED BY: <i>DCM</i>	SHEET 7 OF 10	
HORIZ. SCALE: 1" = 40'			VERT. SCALE: 1" = 4'		S.S. PROJECT NO. 323	

POLE 62H2H



B.M. ELEV. 925.48 CHIS. X ON F.H. BOLT  
AT VICTORIA  
F.B. 70/32

922  
921  
920  
919  
918  
917  
916

923  
922  
921  
920  
919  
918  
917  
916

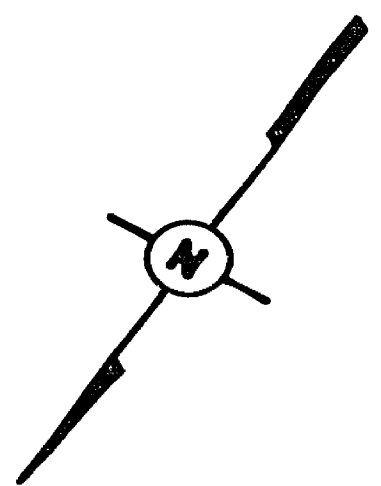
922  
921  
920  
919  
918  
917  
916

CURB RETURN DATA			
①	R	Δ	T
②	35.00'	90°00'00"	35.00'
			55.34'

FOR DETAILED INFORMATION, SEE SHEET 10, DETAILED PLAN "D"

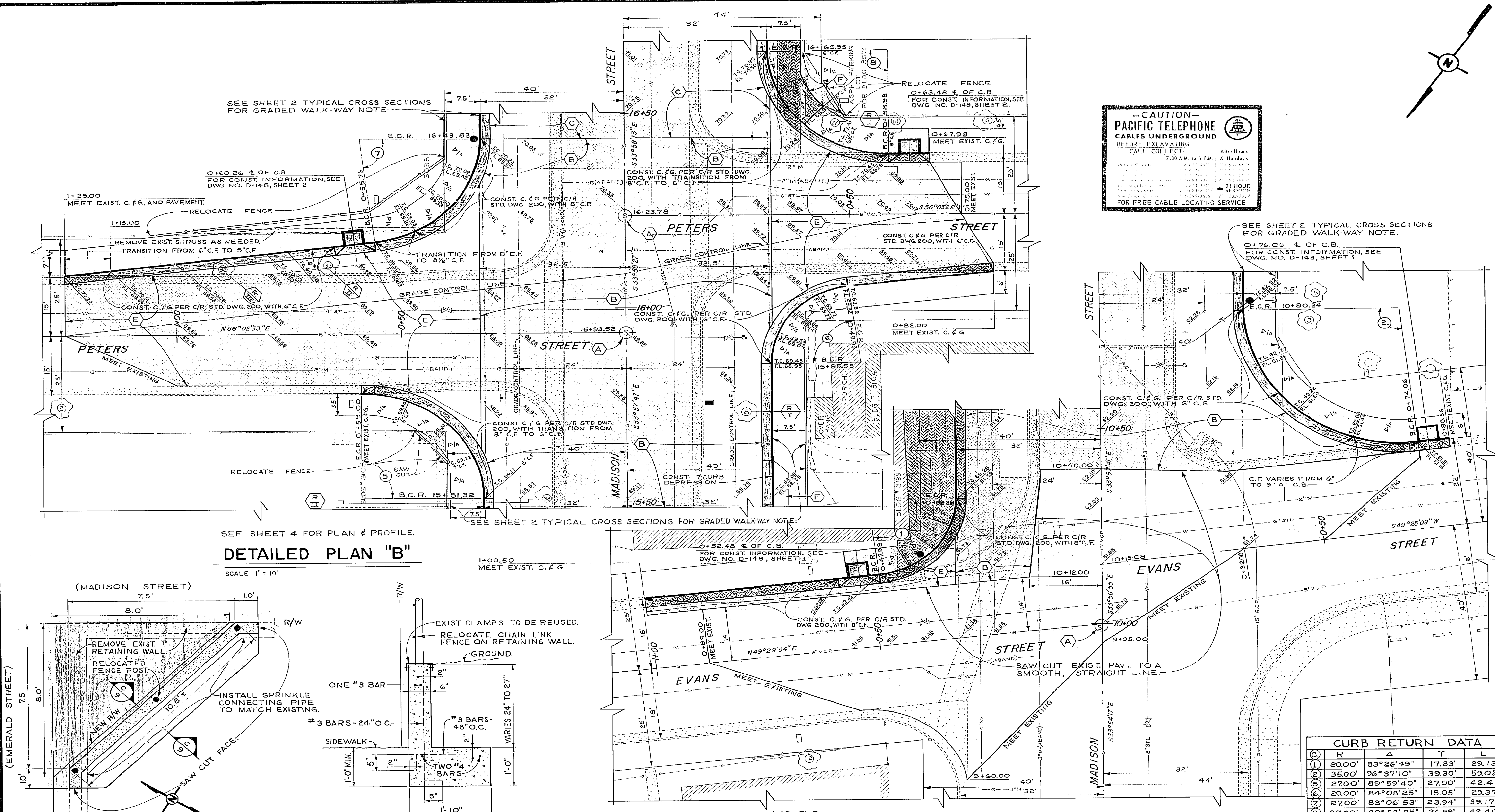
* AS BUILT <i>DC#</i> 2-7-68 DESIGNED BY <i>DC#</i> DRAWN BY <i>YJG</i> CHECKED BY <i>DC#</i>	CITY OF RIVERSIDE, CALIFORNIA DEPARTMENT OF PUBLIC WORKS APPROVED BY <i>[Signature]</i> TRAFFIC DIVISION DATE 8-23-67	<b>MADISON STREET EVANS TO VICTORIA</b> Plan & Profile Sta. 36+00 to Sta. 43+00 HORIZ. SCALE: 1" = 40' VERT. SCALE: 1" = 4'	PROJECT NO. 3110 <b>R-1182</b> SHEET 8 OF 10 S.S. PROJECT NO. 323
--	---	---	--





**- CAUTION -**  
**PACIFIC TELEPHONE**  
**CABLES UNDERGROUND**  
 BEFORE EXCAVATING  
 CALL COLLECT

After Hours	7:30 A.M. to 5 P.M.	& Holiday
Orange County	714-633-6811	714-247-4637
San Diego County	619-441-0171	619-441-0171
San Bernardino County	909-394-7171	909-394-7171
San Francisco County	415-221-3111	415-221-3111
San Jose County	408-281-8111	408-281-8111
San Mateo County	650-251-8111	650-251-8111
For Free Cable Locating Service		



SEE SHEET 2 TYPICAL CROSS SECTIONS FOR GRADED WALK-WAY NOTE.

SEE SHEET 2 TYPICAL CROSS SECTIONS FOR GRADED WALK-WAY NOTE.

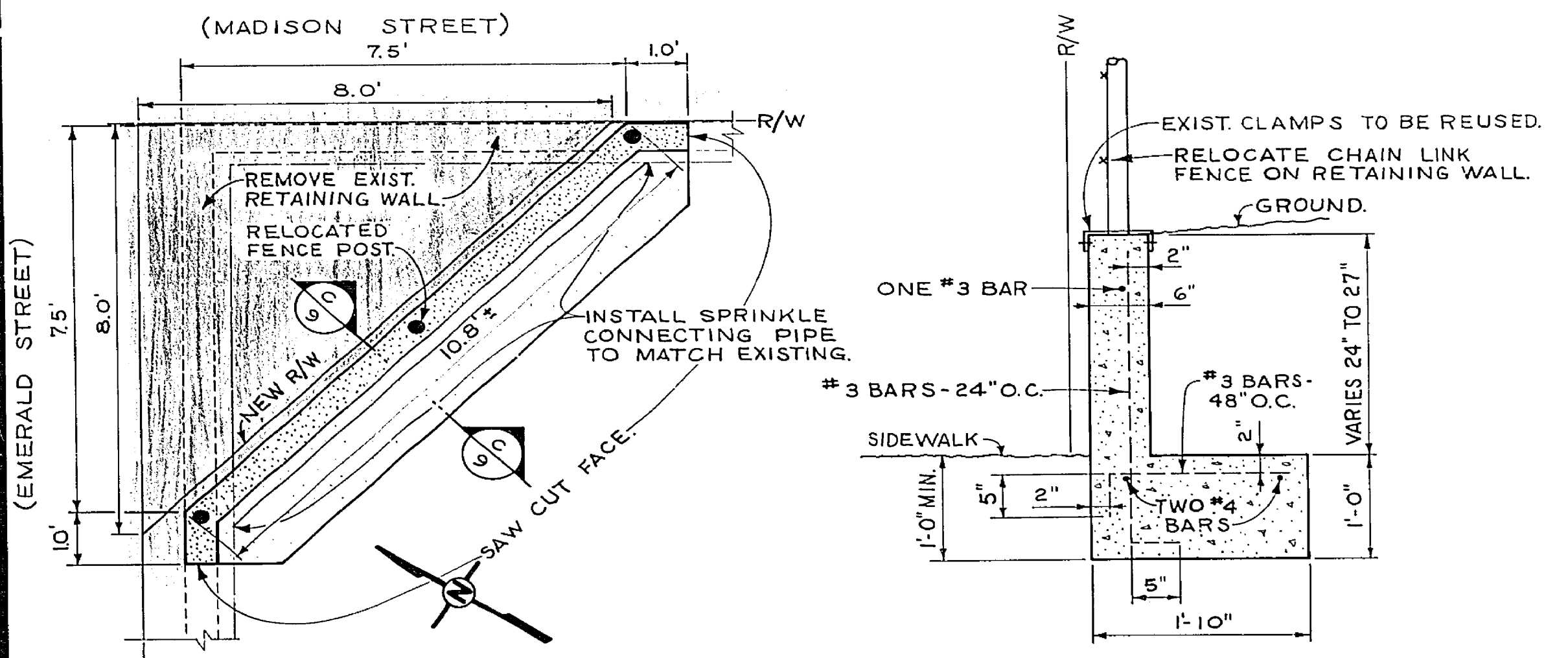
SEE SHEET 4 FOR PLAN & PROFILE.

SEE SHEET 2 TYPICAL CROSS SECTIONS FOR GRADED WALK-WAY NOTE.

SEE SHEET 3 FOR PLAN & PROFILE.

**DETAILED PLAN "B"**

SCALE 1" = 10'



SEE SHEET 5 FOR PLAN & PROFILE AT EMERALD ST. S'LY.

**DETAIL NO. 1**

SCALE 1" = 2'

**SECTION**

SCALE 1" = 1'-0"

**DETAILED PLAN "A"**

SCALE 1" = 10'

CURB RETURN DATA				
Station	R	Δ	T	L
①	20.00'	83°26'49"	17.83'	29.13'
②	35.00'	96°37'10"	39.30'	59.02'
③	27.00'	89°59'40"	27.00'	42.41'
④	20.00'	84°08'25"	18.05'	29.37'
⑤	27.00'	83°06'53"	23.94'	39.17'
⑥	27.00'	89°58'25"	26.99'	42.40'

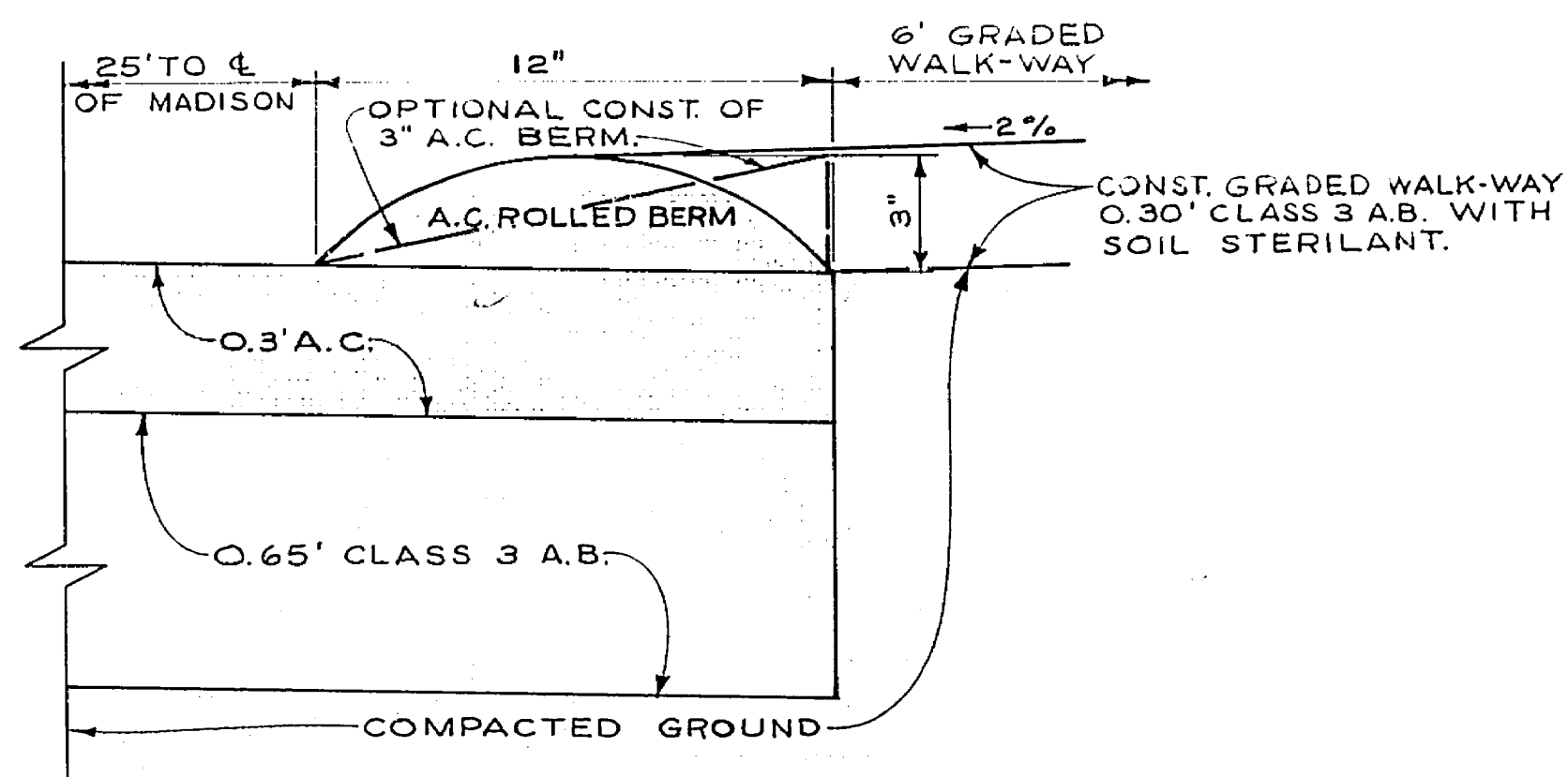
DESIGNED BY	REVISIONS	APPR. DATE	CHECKED BY
D.S.			J.C.H.

CITY OF RIVERSIDE, CALIFORNIA DEPARTMENT OF PUBLIC WORKS			
APPROVED BY	DATE	APPROVED BY	DATE
OFFICE ENGINEER	8/2/77	DIRECTOR OF PUBLIC WORKS	8/2/77
PARK DEPARTMENT	8/2/77		
TRAFFIC DIVISION	8/2/77		
ASSISTANT CITY ENG.	8/2/77		

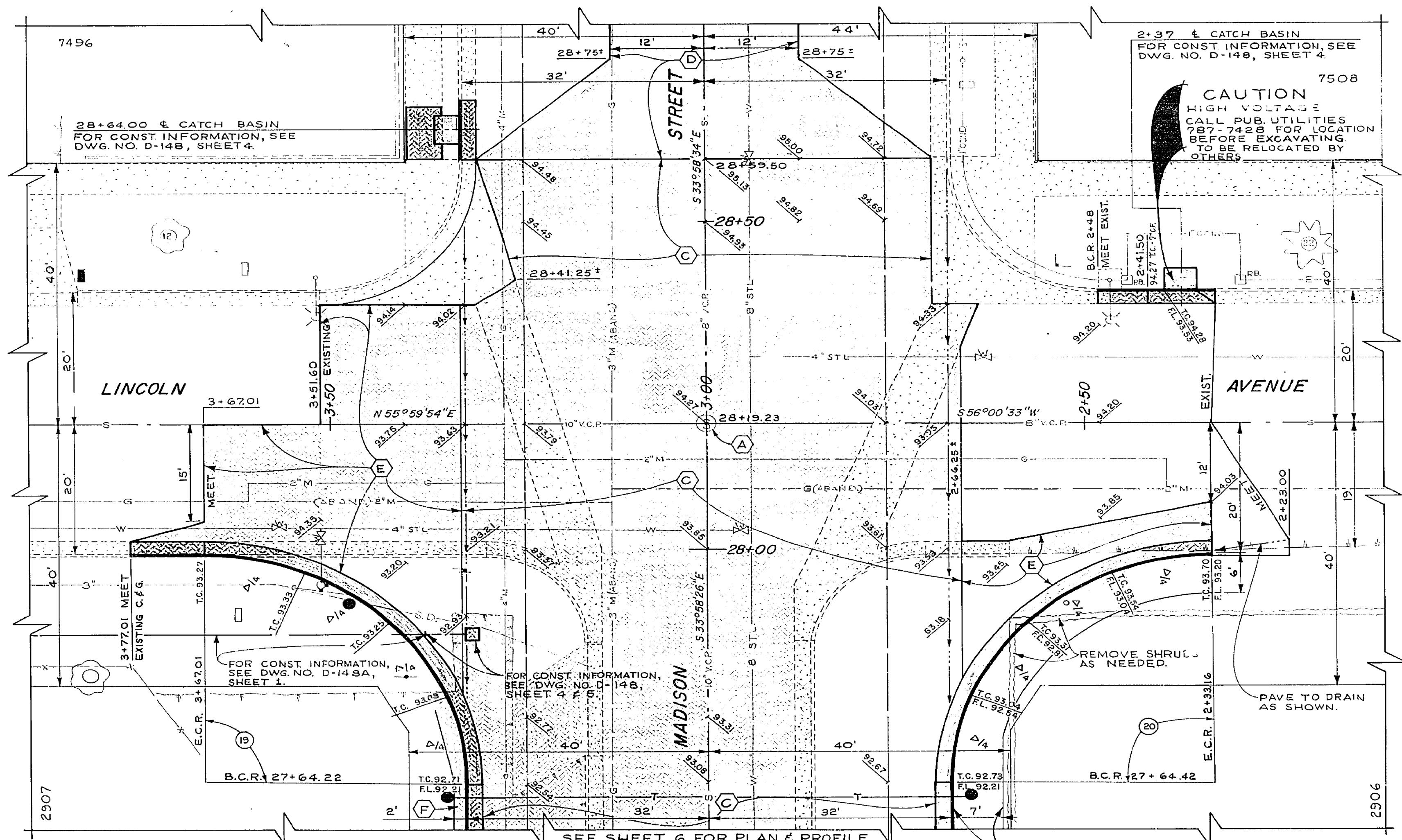
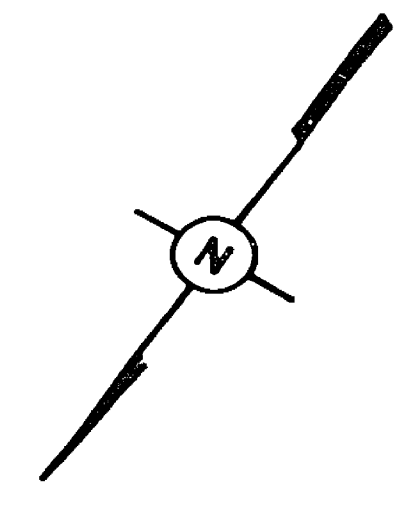
**MADISON STREET**  
**EVANS TO VICTORIA**

Detailed Plan "A" & "B"

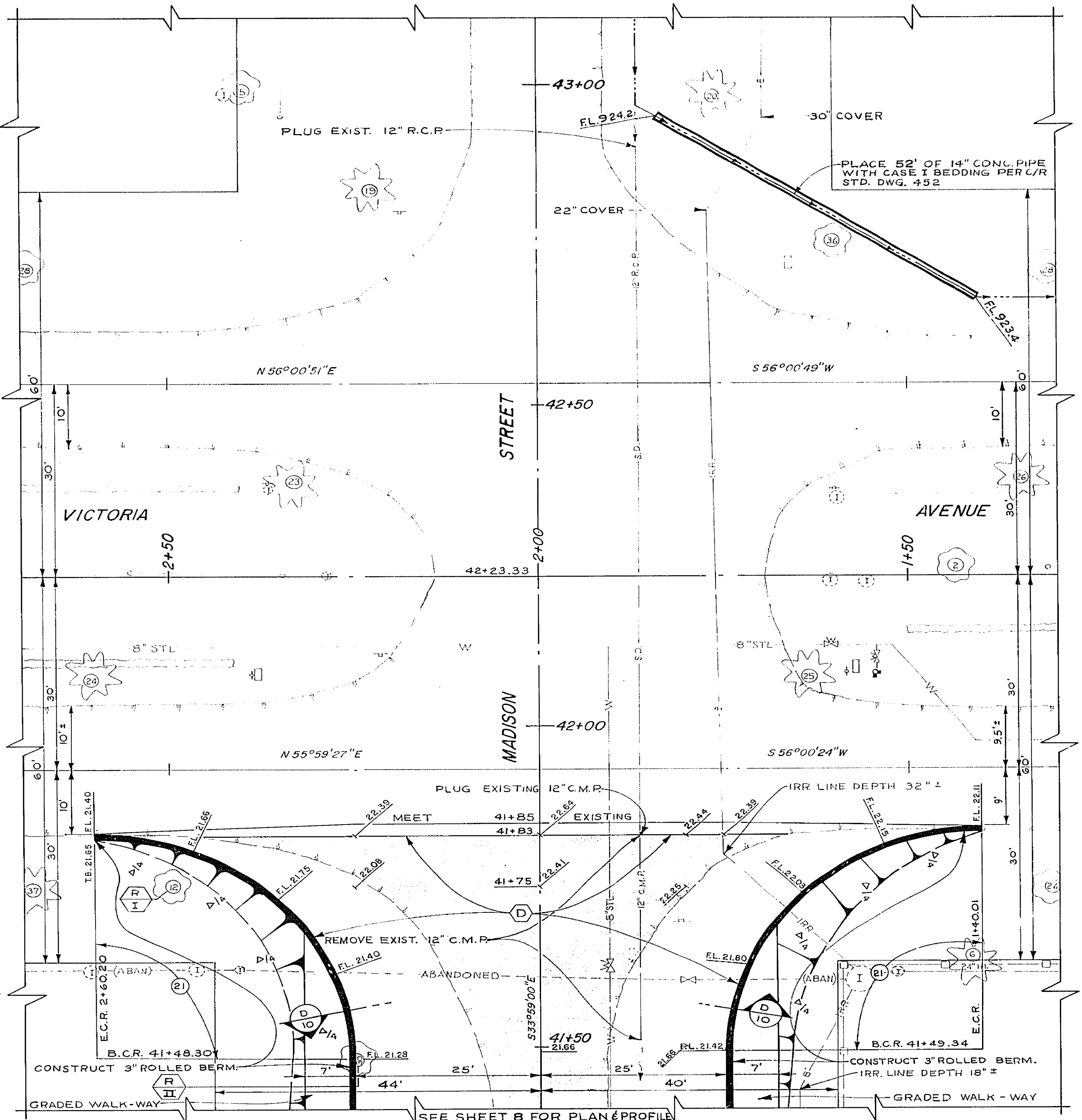
PROJECT NO. 3110  
**R-1182**  
 SHEET 9 OF 10  
 S.S. PROJECT NO. 323



**SECTION**  
SCALE 3" = 1'-0"



SEE SHEET 6 FOR PLAN & PROFILE.  
**DETAILED PLAN "C"**  
SCALE 1" = 10'



SEE SHEET B FOR PLAN & PROFILE.  
**DETAILED PLAN "D"**  
SCALE 1" = 10'

CURB RETURN DATA				
C	R	Δ	T	L
(19)	35.00'	90°01'40"	35.02'	54.99'
(20)	35.00'	89°49'50"	34.90'	54.87'
(21)	35.00'	90°00'00"	35.00'	55.34'

* AS BUILT <i>Dr.H</i>		2-7-68	CITY OF RIVERSIDE, CALIFORNIA DEPARTMENT OF PUBLIC WORKS		PROJECT NO. 3110
APPROVED BY			MADISON STREET EVANS TO VICTORIA		R-1182
OFFICE ENGINEER			Detailed Plan "C" & "D"		SHEET 10 OF 10
TRAFFIC DIVISION			SCALE AS SHOWN		S.S. PROJECT NO. 323
DESIGNED BY <i>D.S.</i>			DATE 2-2-67		
DRAWN BY <i>JPG</i>					
CHECKED BY <i>J.C.H.</i>					