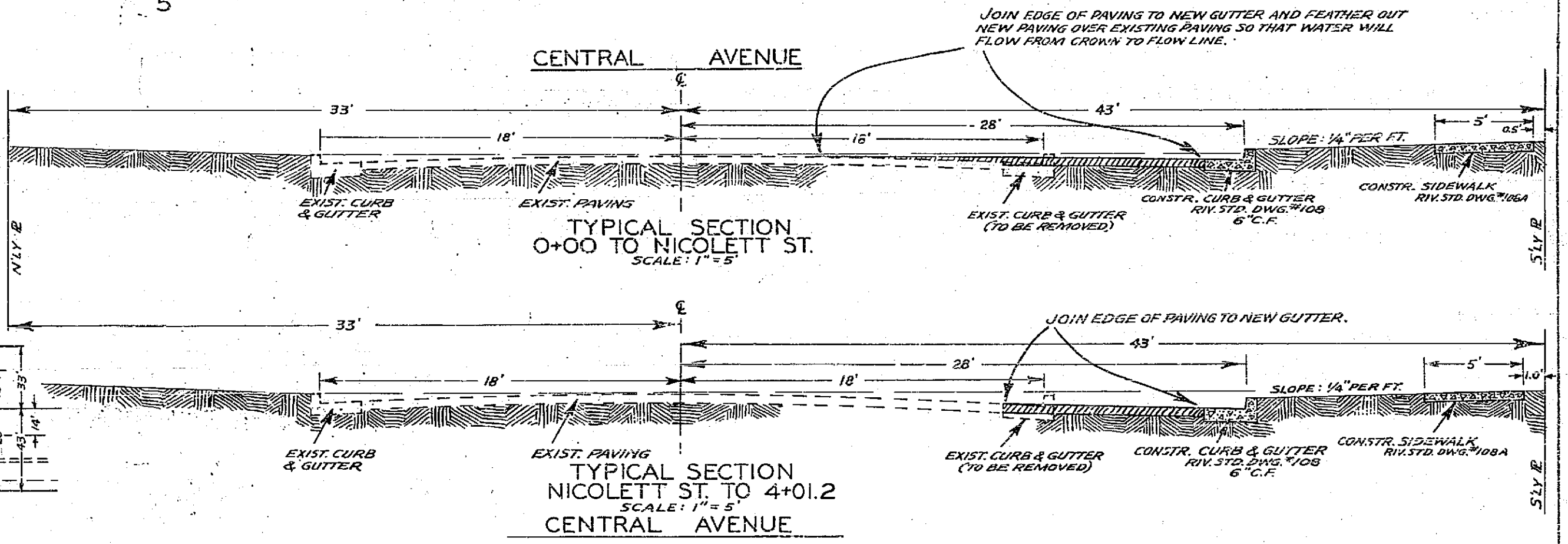
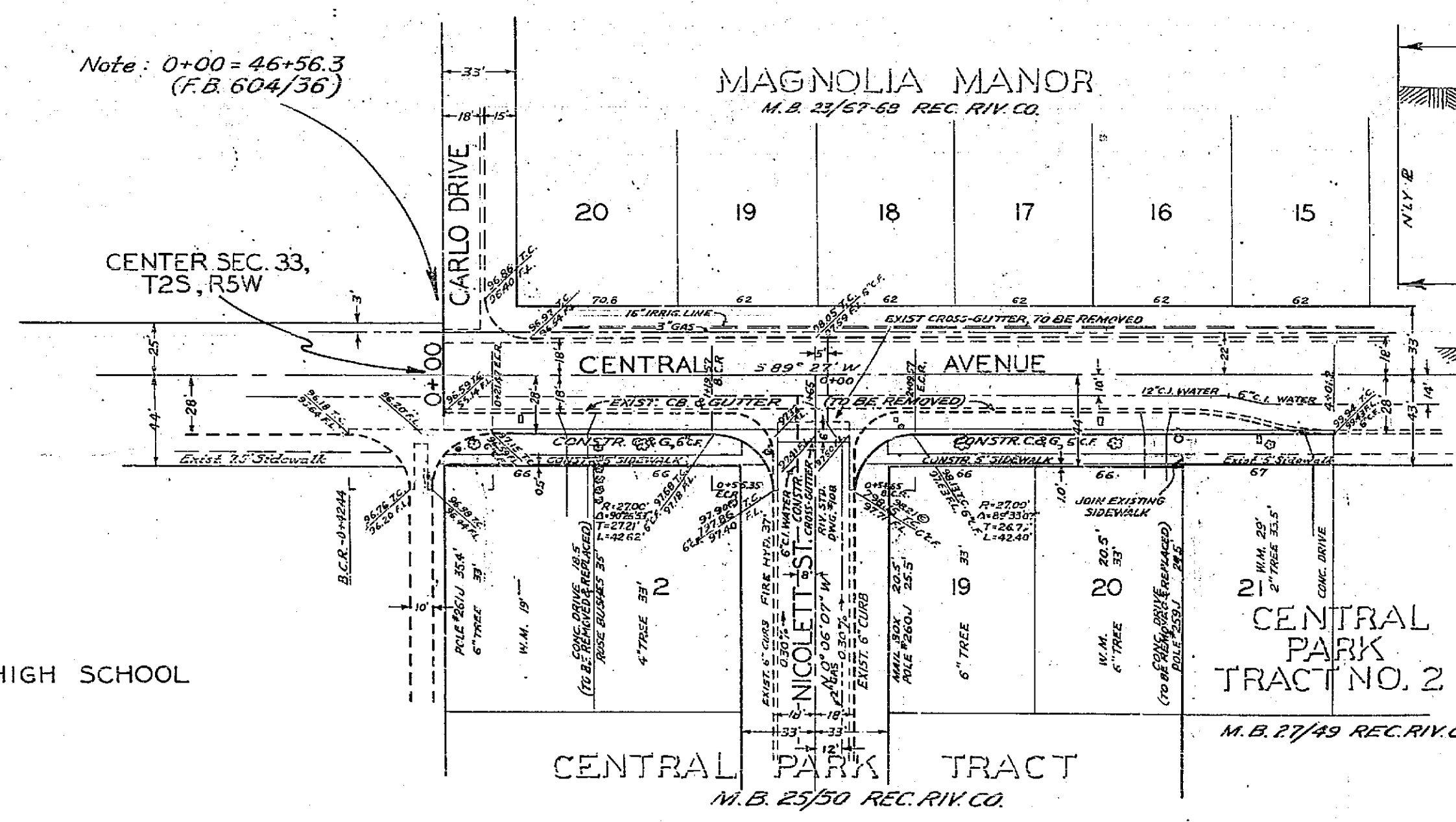


B.M. ELEV. 796.97, S&L. IN NE CB. RET. CARLO DR. & CENTRAL AVE. (SEE B.M. BOOK)
 B.M. ELEV. 790.22 (CITY) PK IN LEAD, N. SIDE CENTRAL AVE. IN CONC. WIER.
 F.B. 585/47 604/34
 SCALES: HOR. 1" = 50', VERT. 1" = 5'

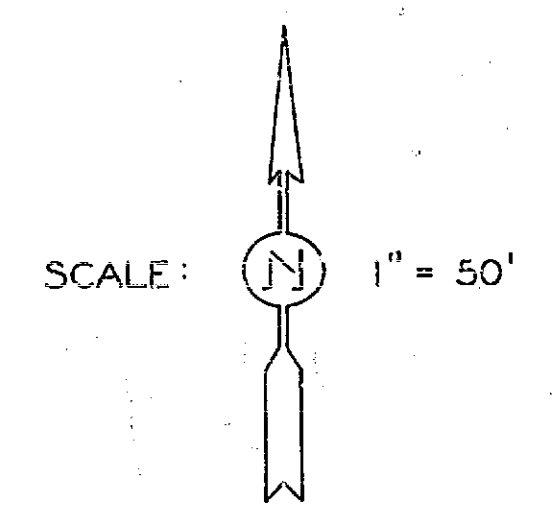
NO.	DATE	DESCRIPTION

Note: 0+00 = 46+56.3
 (F.B. 604/36)



NO.	DATE	DESCRIPTION

SIERRA JR. HIGH SCHOOL



REVISIONS			CITY OF RIVERSIDE CALIFORNIA DEPARTMENT OF PUBLIC WORKS
MARK	DATE	DESCRIPTION	
Δ	7-29-57	CORRECTED GRADE W.O.A.	CURB RELOCATION & SIDEWALK CENTRAL AVENUE SOUTH SIDE, ELY OF EAST LINE OF SIERRA JR. HIGH SCHOOL

DESIGNED BY W.O.A.	CHECKED BY H.H.	APPROVED BY <i>[Signature]</i>	R-119
DRAWN BY H. Ball		DIRECTOR OF PUBLIC WORKS	
RECOMMENDED BY <i>[Signature]</i>	ASSISTANT CITY ENGINEER	DATE May 6, 1957	SHEET 1 OF 1

