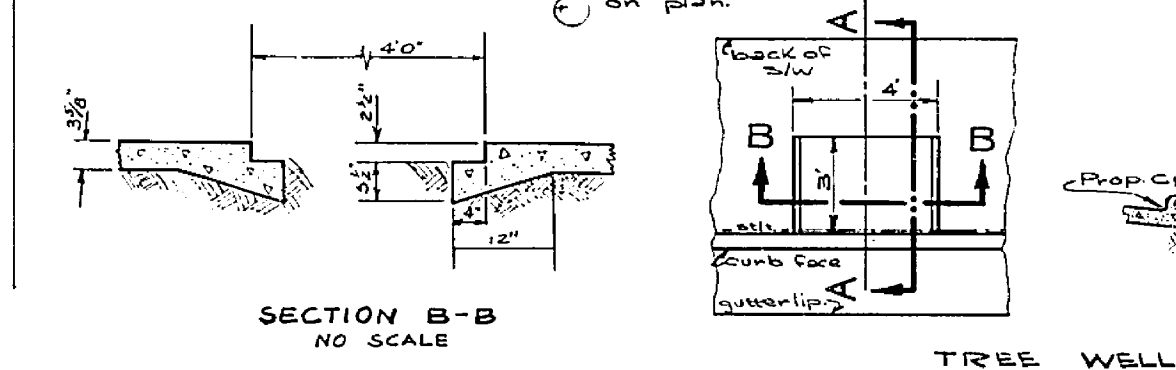
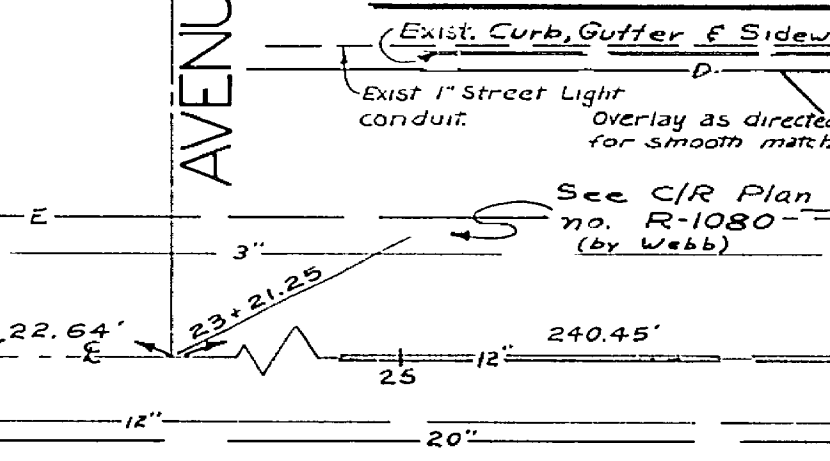
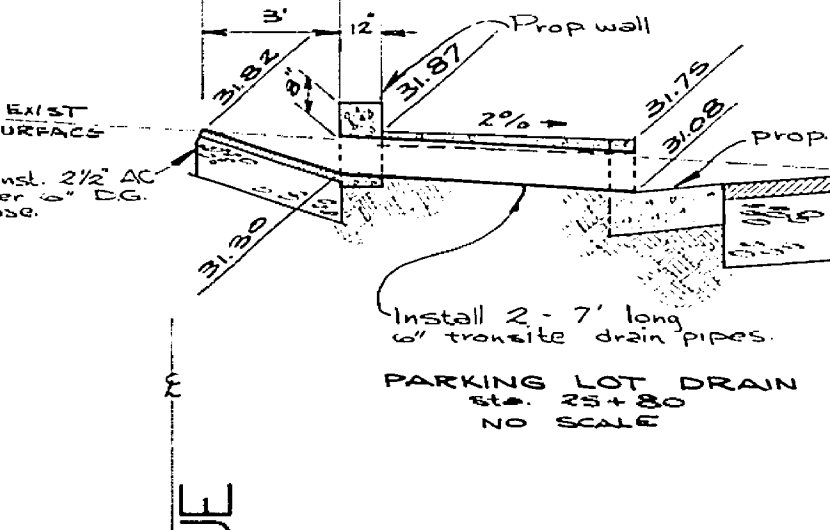


BENCH MARKS:
 Chis. X on S.W. curb return at E.C. on Central & De Anza Ave. Elev. 830.52.
 PK Nail in lead in Center of S.E. curb return of Central Ave. & San Diego Ave. Elev. 833.095



NOTE: SEE R-1080-A FOR GENERAL AND STREET LIGHT NOTES.
 Approved for driveway locations and other improvements adjacent to the Riverside Plaza.

- CAUTION -
PACIFIC TELEPHONE
CABLES UNDERGROUND
 BEFORE EXCAVATING
 CALL COLLECT.
 Orange County 714-433-0811
 Riverside County 714-481-0071
 After Hours 7:30 A.M. to 5 P.M. & Holidays 714-547-6858
 714-547-6206
 FOR FREE CABLE LOCATING SERVICE

CITY OF RIVERSIDE, CALIFORNIA
DEPARTMENT OF PUBLIC WORKS
 APPROVED BY: [Signature]
 TRAFFIC DIVISION
 ASSISTANT CHIEF ENGR.
 DESIGNED BY: [Signature]
 DRAWN BY: D.C.K.
 CHECKED BY: [Signature]

REFERENCE: FB 727/53-61
SS-321
CENTRAL AVENUE
BETWEEN
DE ANZA AVE. & RIVERSIDE AVE.
STA. 25+61.70 TO STA. 29+83.50
 HORIZ. SCALE: 1" = 20' VERT. SCALE: 1" = 2'
 PROJECT NO. G1073309
 LS-13096
 SHEET 1 OF 2
R-1197
 SHEET 1 OF 1
 FILE NO.

APPROVED FOR STREET LIGHTS
 CHIEF ENGINEER
 DATE: