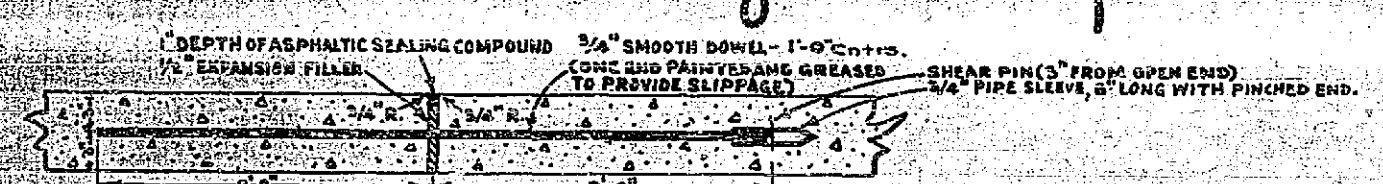
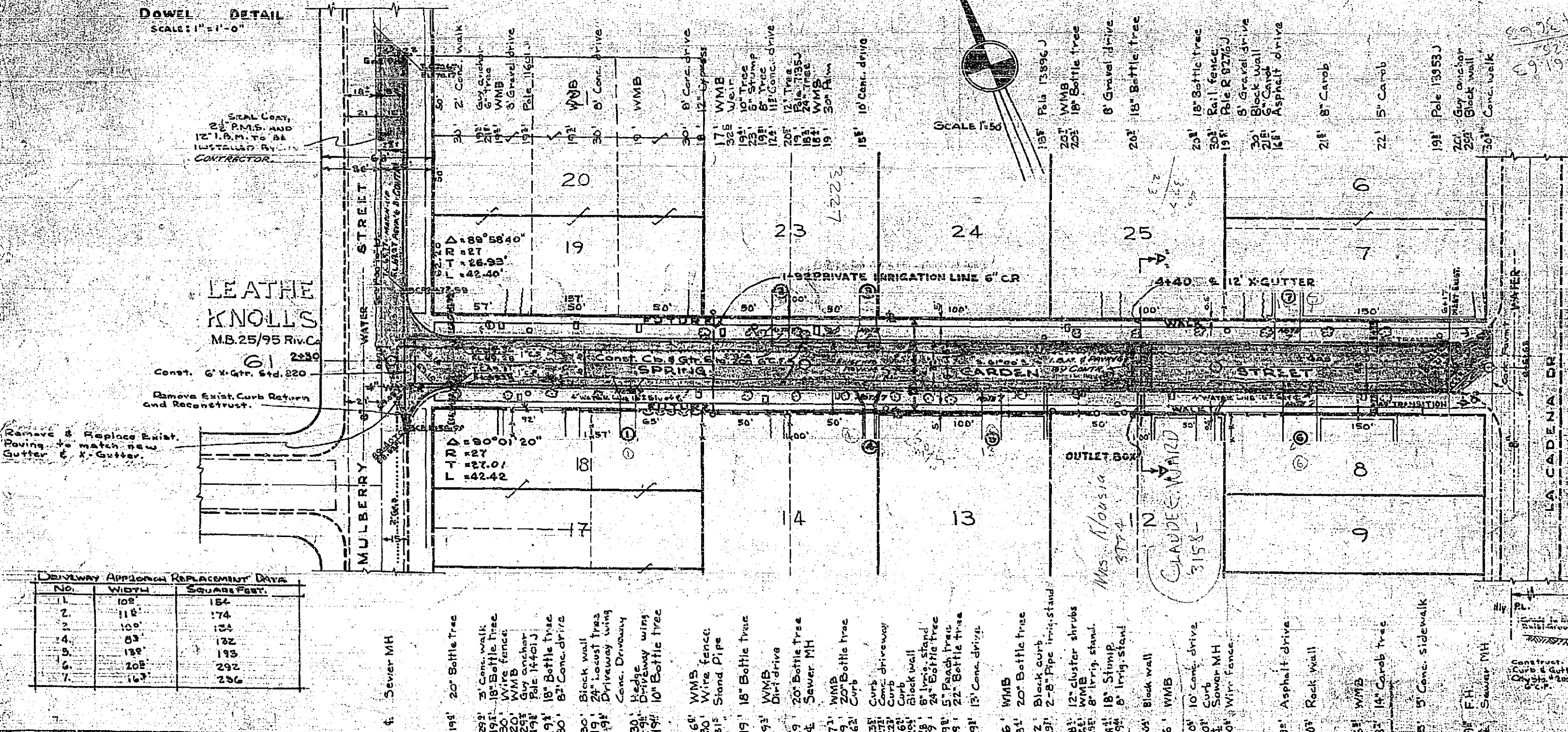


CITY D.M.S. P.K. in W. curb Mulberry on Spring Garden  
 Elev. 669.51 @ P.K. in E. curb W. drive La Cadena on Spring Garden Elev. 662.52 @  
 F.D. 61/17-25, 613/68-71, 588/217, 659/11  
 SCALE: 1" = 50'

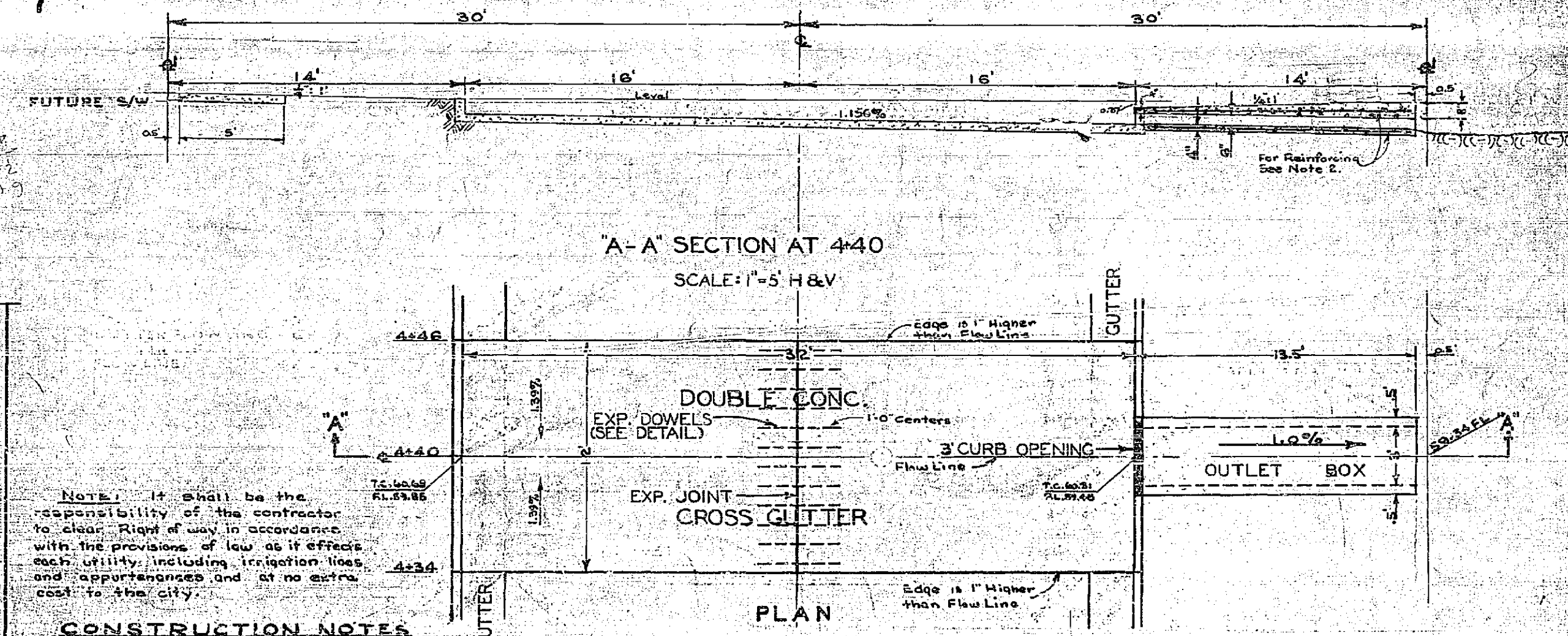


DOWEL DETAIL  
 SCALE: 1" = 1'-0"



LEATHE KNOLLS  
 M.B. 25/95 Riv. C.  
 Const. 6' x 6' in. 220

NO.	VOLUME	SQUARE FEET
1	108	154
2	115	174
3	109	154
4	03	132
5	13	113
6	28	242
7	13	236

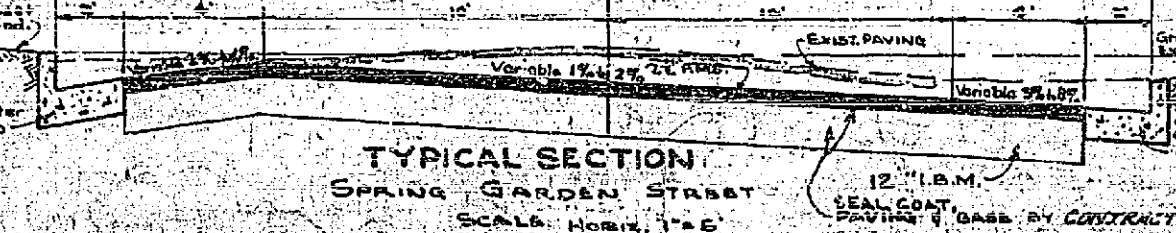


A-A SECTION AT 4+40  
 SCALE: 1" = 5' H & V

PLAN  
 SCALE: 1" = 5'

Note: It shall be the responsibility of the contractor to clear, right of way in accordance with the provisions of law as it affects such utility, including irrigation lines, and appurtenances and at no extra cost to the city.

- CONSTRUCTION NOTES**
- REPAVING AND I.P.M. AND LOWERING OF EXIST. MAINT. TO NEW TYPING GOOD TO BE DONE BY CONTRACTOR
  - OUTLET BOX HEIGHT, 18" PER BASIS OF 5" CURB EACH DIRECTION TOP AND BOTTOM.
  - OUTLET BOX CURB OPENING TO HAVE 24" x 24" x 1/2" x 1/2" ANGLE, 180° AT TOP OF OPENING PER CITY STD. NO. 400
  - CONSTRUCT 2 NEW CURB, RETURNS AND APRONS, REMOVING EXISTING RETURN TO CITY WATER DEPT. TO MATCH W/ RISES.
  - CONTRACTOR TO REMOVE CONCRETE DRIVEWAYS & OTHER DESTRUCTIONS TO CLEAR CONSTRUCTION AND TO GRADE PORTIONS OF DRIVEWAYS WITHIN THE ROW. TO BE REPAIRABLE BY THE DRIVELAND.
  - EXISTING CONCRETE DRIVEWAY APPROACHES TO BE REMOVED AND REPLACED WITH NEW CONC. APPROACHES, 5' x 3'0" PROFILE & GRADE.



TYPICAL SECTION  
 SPRING GARDEN STREET  
 SCALE: HORIZ. 1" = 5' VERT. 1" = 5'

REVISIONS		CITY OF RIVERSIDE CALIFORNIA DEPARTMENT OF PUBLIC WORKS
MARK	DATE	
		<b>SPRING GARDEN STREET            IMPROVEMENT DISTRICT            CURB AND GUTTER            MULBERRY TO LACADENA</b>

DESIGNED BY Wdg. AKJ/dm	CHECKED BY Wdg.	APPROVED BY <i>[Signature]</i>	<b>R-120</b> SHEET 1 OF 1
DRAWN BY Wdg. AKJ/dm	RECOMMENDED BY <i>[Signature]</i>	DIRECTOR OF PUBLIC WORKS	

DATE: 4-21-59