

780

770

780 ±

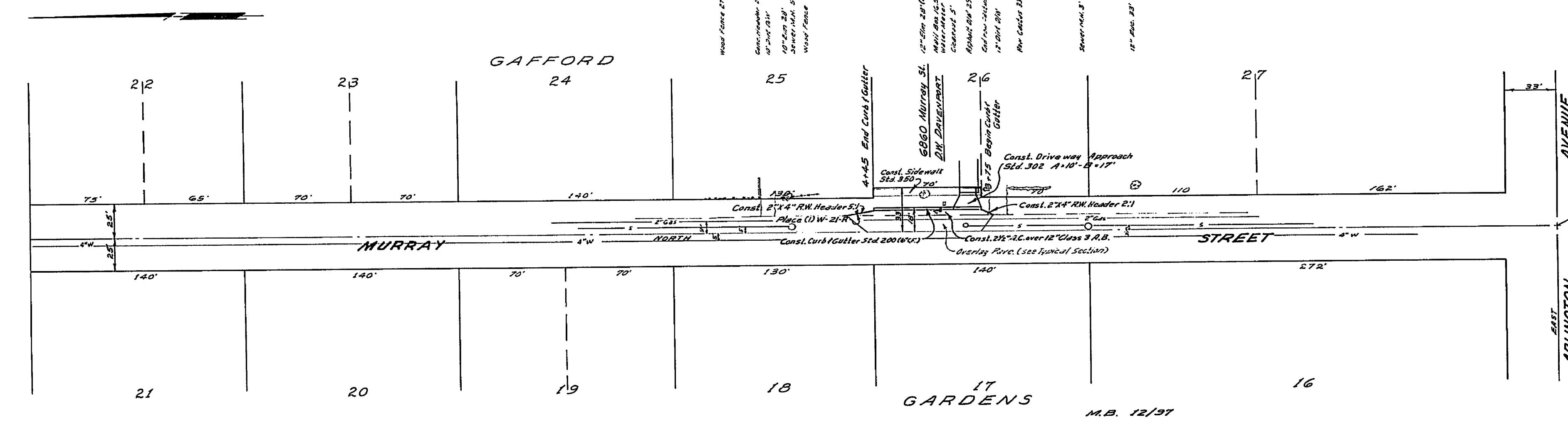
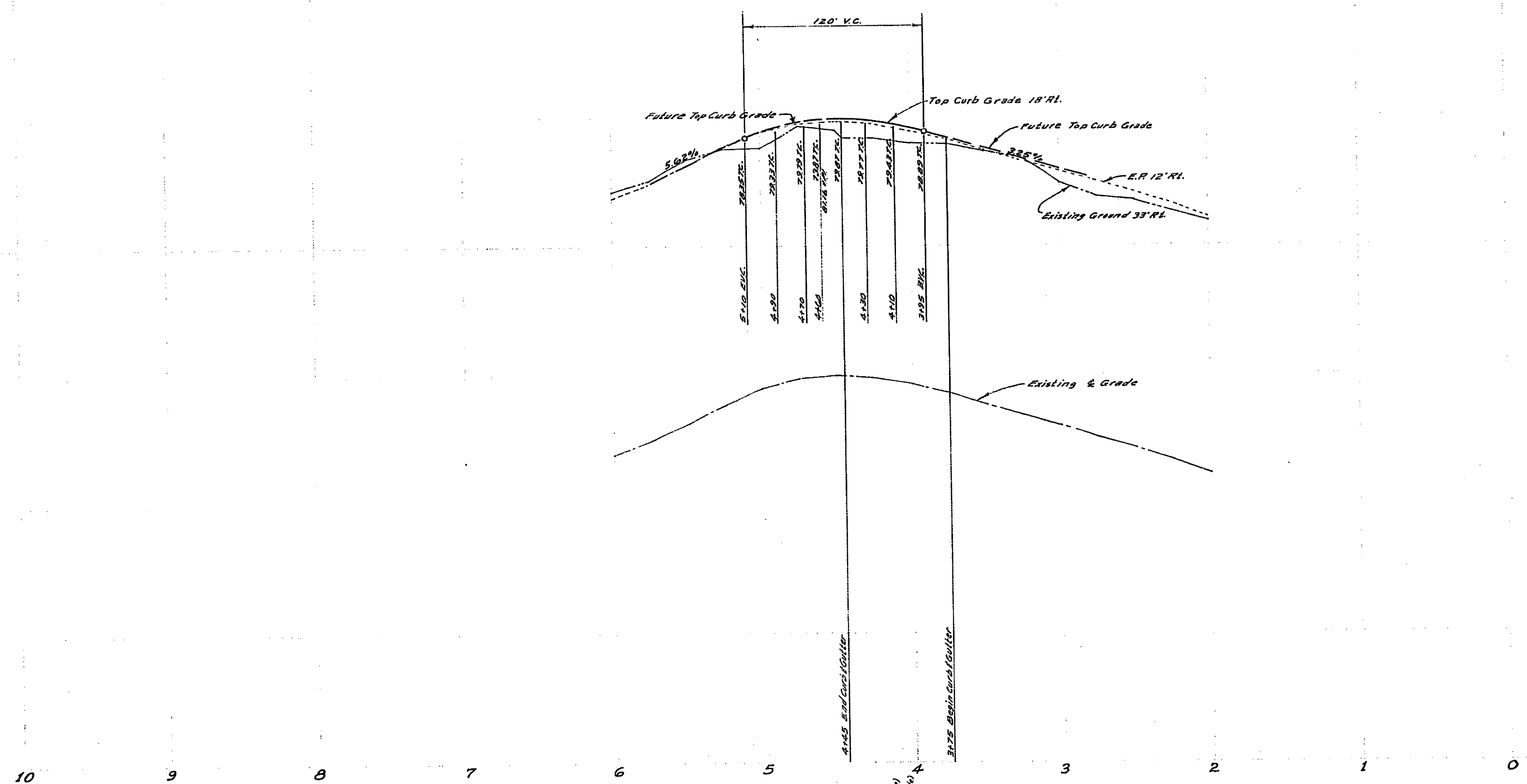
770 ±

780

770

780 ±

770 ±

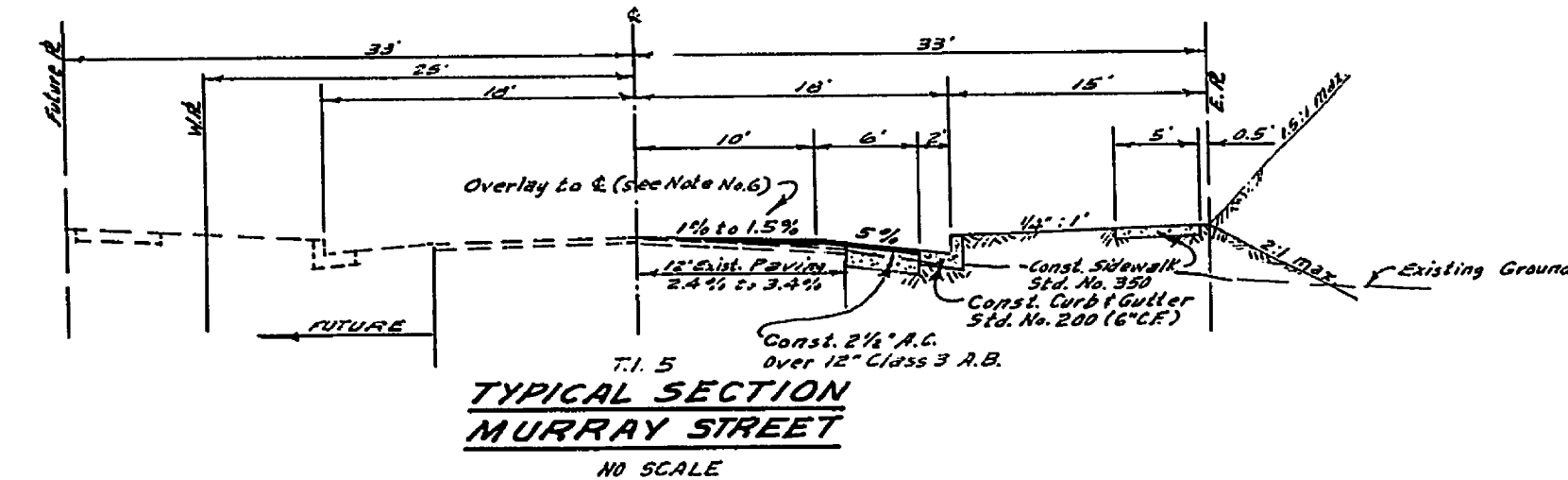


**BENCH MARK:**  
R.R. spike in pole #1007-J sly side Arlington  
1 Murray Elev 766.62

- GENERAL NOTES**
- (1) It shall be the responsibility of the contractor to clear the right of way in accordance with the provisions of law as it affects each utility, including irrigation lines and appurtenances, and at no cost to the City.
  - (2) Construction shall be in accordance with the City of Riverside, Department of Public Works, Specifications No. 461 and Standard Drawings.
  - (3) Prime coat, seal coat, and paint binder are required.
  - (4) Grading will require a permit under Ordinance 3093 for a cut or fill exceeding 100 cubic yards, or a fill over one foot in depth.
  - (5) The contractor shall arrange for a soil test to be made by a Soil Engineer after the street has been prepared to rough grade. Depth of base material and sub-base material shall be determined by the Riverside Design Standards and Test Procedures.
  - (6) Trim edge of existing pavement, where new paving joins existing pavement, to a clean, straight line. Construct match-up paving as shown and overlay paving as directed in the field to produce a smooth crown section.
  - (7) The finished subgrade shall have a composition of not less than 90% for a depth of 0.5 foot as determined by test method M.C.D. 216-C immediately prior to placement of cover.
  - (8) The amount of asphalt overlay on existing pavement has been estimated by the Engineer to be approximately 2,700 sq. yds.

**QUANTITY ESTIMATE:**

Curb & Gutter Standard No. 200 (6" C.F.)	70 L.F.
2 1/2" A.C. and Seal Coat	355 S.F.
Imported Base Material	12 C.Y.
2" x 4" Redwood Header	28 L.F.
W-21-R	1 E.A.
Driveway Approach Standard M.302	1 E.A.
Sidewalk Standard No. 350	350 S.F.



**NOTICE TO CONTRACTOR**

The existence and location of any underground utility pipes or structures shown on these plans are obtained by a search of the available records. To the best of our knowledge, there are no existing utilities except as shown on these plans.

The contractor is required to take due precautionary measures to protect the utility lines shown and any other lines not of record or not shown on these plans.

<b>ALBERT A. WEBB ASSOCIATES</b> CIVIL ENGINEERS RIVERSIDE, CALIFORNIA APPROVED BY: <i>[Signature]</i> DATE: 4/10/67 R.E. No. 3070		<b>CITY OF RIVERSIDE, CALIFORNIA</b> DEPARTMENT OF PUBLIC WORKS APPROVED BY: <i>[Signature]</i> DATE: 6-14-67 PARK DEPARTMENT TRAFFIC DIVISION ASSISTANT CITY ENGINEER		<b>STREET PLAN AND PROFILE</b> <b>MURRAY STREET</b> East Side 375' to 445' North of Arlington Avenue Building Permit		PROJECT NO. <b>R-1229</b> SHEET 1 OF 1 FILE NO. 67-140A
W.D. 67-140 FOR: D.W. DAVENPORT F.B. 649		DESIGNED BY: <i>[Signature]</i> DRAWN BY: <i>[Signature]</i> CHECKED BY: <i>[Signature]</i>		HORIZ. SCALE: 1" = 50' VERT. SCALE: 1" = 5'		