

**QUANTITY ESTIMATE**

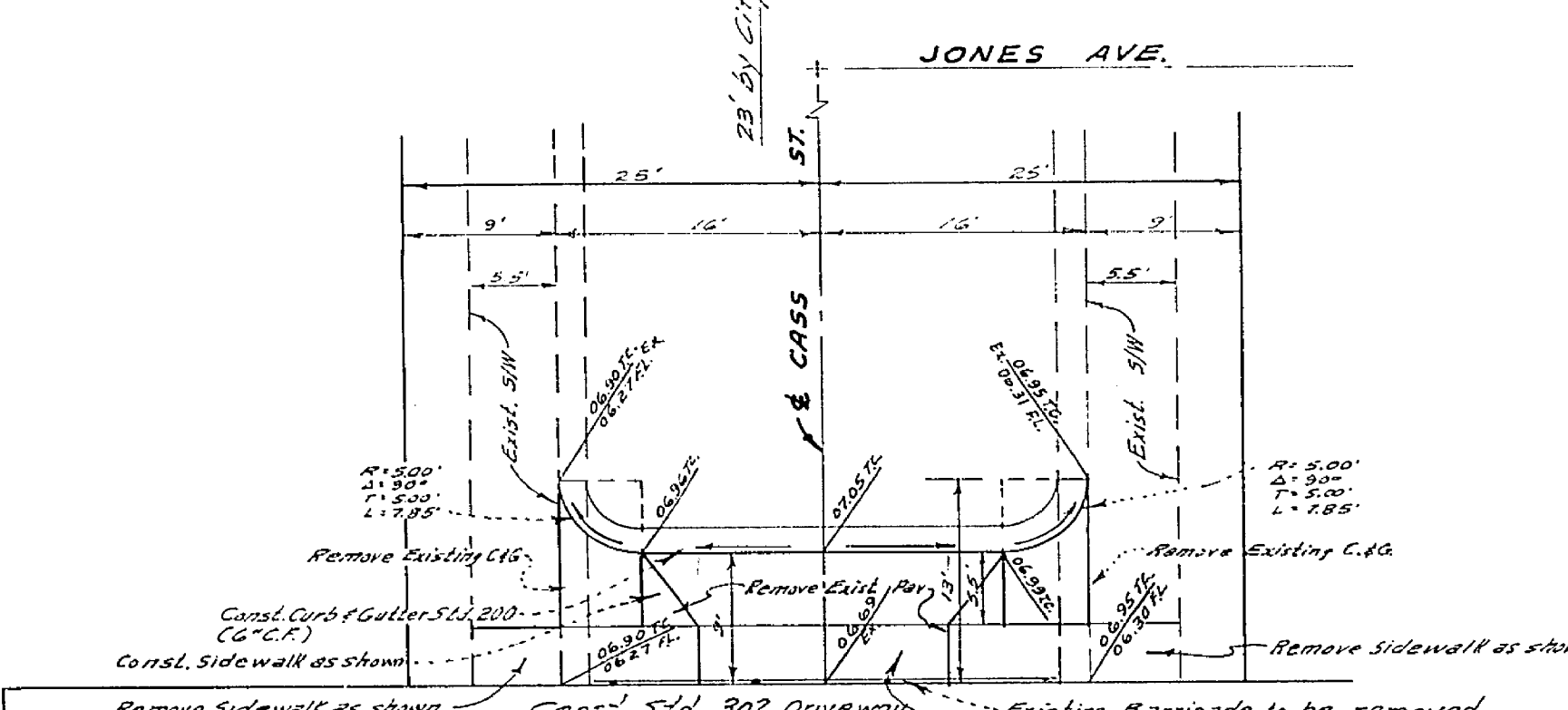
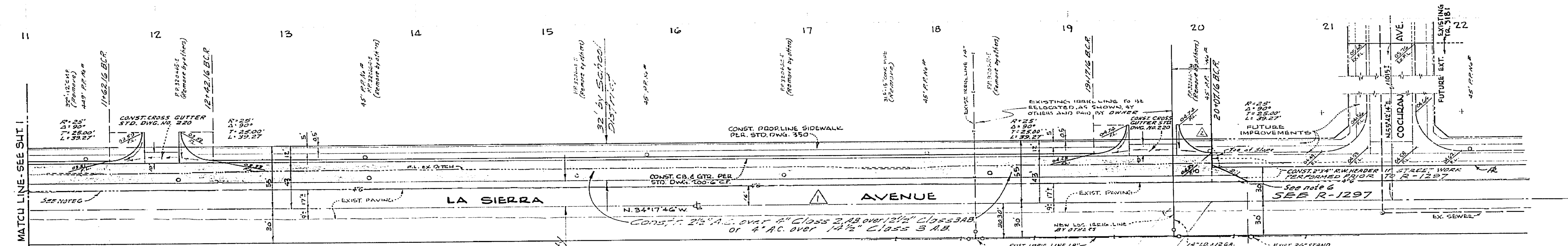
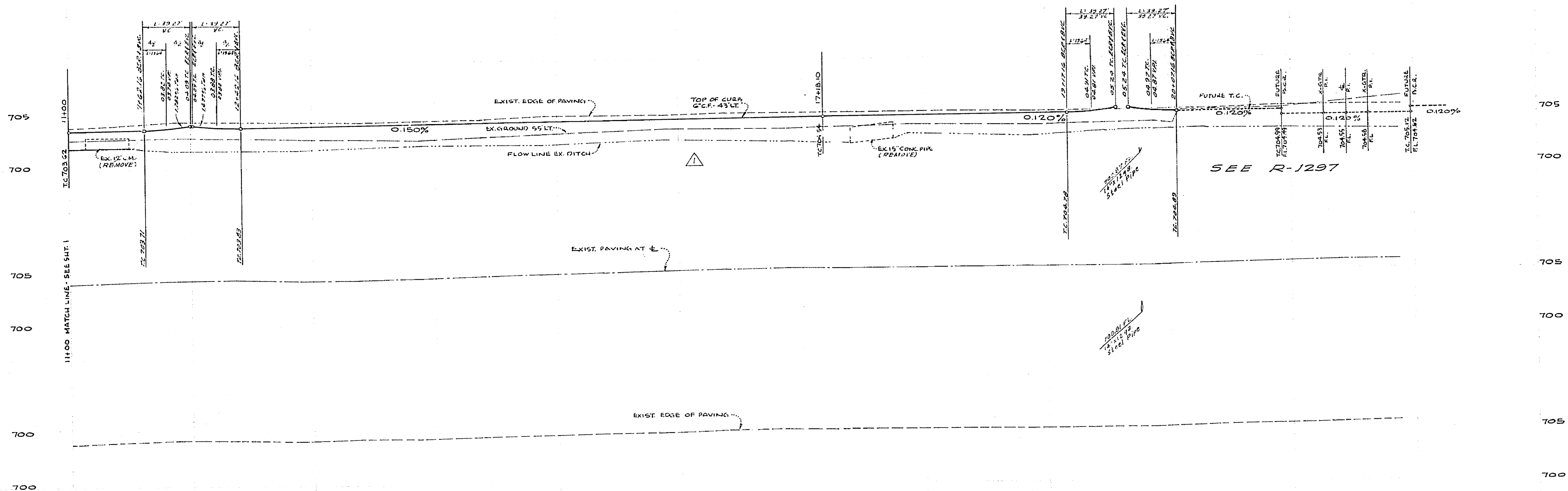
Curb & Gutter Standard 240 (6"x11")	1300	LF
2 1/2" A.C.	8,245	S.F.
Sidewalk Standard 350	3,638	S.F.
Cross Gutter Standard 220 (8")	1,022	S.F.
W-21-R	2	EA.
Curb & Gutter Removal	86	LF
Aggregate Base - Class 2 A.A. 20401, Class 308 22001	1	EA.
Standard 302 Driveway A-15, B-22	79	L.F.
2 1/2" Redwood Header	140	S.F.
Sidewalk (General)	3,489	S.F.
2 1/2" A.C. (BY CITY)	42	L.F.
Aggregate Base (BY CITY) Class 2 A.A. 11601, Class 308 26401	2	EA.
W-21-R (BY CITY)		

**BENCH MARKS:**  
 1. P.C. NAIL IN N.E. CORN. RETURN AT LA SIERRA AVE. AND COLLETT AVE. STA. 10+74.72 ELEV. 703.81  
 2. P.C. NAIL IN S.W. CORN. RETURN AT LA SIERRA AVE. AND MAGNOLIA AVE. STA. 10+73.71 ELEV. 712.03

- GENERAL NOTES**
- It shall be the responsibility of the contractor to locate all utility lines in accordance with the provisions of the contract and to protect each utility, including irrigation lines and apparatus, and of the cost to the City.
  - Construction shall be in accordance with the City of Riverside, Department of Public Works, Specifications No. 41 and Standard Drawings.
  - Prime coat, seal coat, and paint binder are required.
  - Grading will require a permit under Ordinance 5095 for a cut or fill exceeding 100 cubic yards, or a fill over one foot in depth.
  - The subdivider shall arrange for a soil test to be made by a Soil Engineer after the streets have been prepared to rough grade. Depth of base material and A.C. paving shall be determined by City of Riverside Design Standards and Test Procedures.
  - The finish subgrade shall have a compaction of not less than 98% for a depth of 6.5 feet as determined by test method No. C-20-667 immediately prior to placement of cover.
  - Construction shall be in accordance with Standard Specifications for Public Works Construction, 1967 Edition and City of Riverside Standard Drawings.

**NOTICE TO CONTRACTOR**  
 The existence and location of any underground utility lines or structures shown on these plans are obtained by a search of the available records. To the best of our knowledge, there are no existing utilities except as shown on these plans.  
 The contractor is required to take all precautionary measures to protect the utility lines shown on these plans and to record or mark them on these plans.

<b>ALBERT A. WEBB ASSOCIATES</b> CIVIL ENGINEERS RIVERSIDE, CALIFORNIA APPROVED BY: <i>[Signature]</i> DATE 5/31/67 R.E. NO. 9676	W.O. 67-G FOR ALYOND UNIFIED SCHOOL DIST. P.B. 67-6 DESIGNED BY: D.R. DRAWN BY: D.B. CHECKED BY: M.C.	<b>CITY OF RIVERSIDE, CALIFORNIA</b> DEPARTMENT OF PUBLIC WORKS APPROVED BY: <i>[Signature]</i> DATE 10/25/67 OFFICE ENGINEER: <i>[Signature]</i> PARK DEPARTMENT: <i>[Signature]</i> TRAFFIC DIVISION: <i>[Signature]</i> ASSISTANT CITY ENGINEER: <i>[Signature]</i>	<b>STREET PLAN AND PROFILE</b> <b>LA SIERRA AVENUE</b> BETWEEN COLLETT AVE. AND COCHRAN AVE. C.U.R. C-20-667 HORIZ. SCALE: 1" = 50' VERT. SCALE: 1" = 5' PROJECT NO. 55.959 <b>R-1238</b> SHEET 1 OF 2 FILE NO. 67-6A
		APPROVED BY: <i>[Signature]</i> DATE 10/25/67 DIRECTOR OF PUBLIC WORKS	



**BENCH MARKS:**  
 1. NAIL IN N.E. CORNER RETURN AT LA SIERRA AVE. COLLETT AVE. C&R 704/722 ELEV. 701.611  
 2. NAIL IN S.W. CORNER RETURN AT LA SIERRA AVE. 6100 MICHIGAN AVE. TA 6301/111 ELEV. 712.105

SCALE 1" = 50'

FOR GENERAL NOTES SEE SHEET 1

For cut about for Imp. line see file CUP-20-667 May 6/1/60

ALBERT A. WEBB ASSOCIATES CIVIL ENGINEERS RIVERSIDE, CALIFORNIA APPROVED BY: <i>P. A. W. Joo</i> DATE: 5/21/67 R.E. No. 9876		CITY OF RIVERSIDE, CALIFORNIA DEPARTMENT OF PUBLIC WORKS APPROVED BY: <i>[Signature]</i> DATE: 10/25/67 DIRECTOR OF PUBLIC WORKS		PROJECT NO. 55-359 <b>R-1238</b> SHEET 2 OF 2 FILE NO. 67-6A
W.D. 67-6 FOR: ALVORD UNIFIED SCHOOL DIST. P.B. 606		DESIGNED BY: D.S.D. DRAWN BY: D.S.D. CHECKED BY: M.C.		STREET PLAN AND PROFILE <b>LA SIERRA AVENUE</b> BETWEEN COLLETT AVE. AND COCHRAN AVE. C.U.R. C-20-667 HORIZ. SCALE: 1" = 50' VERT. SCALE: 1" = 5'