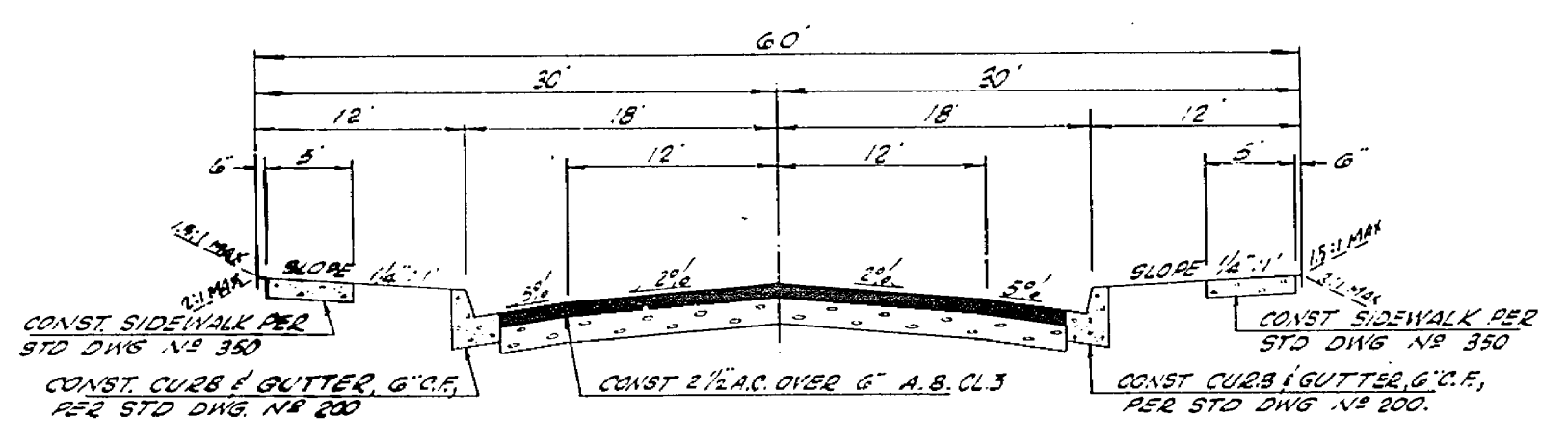
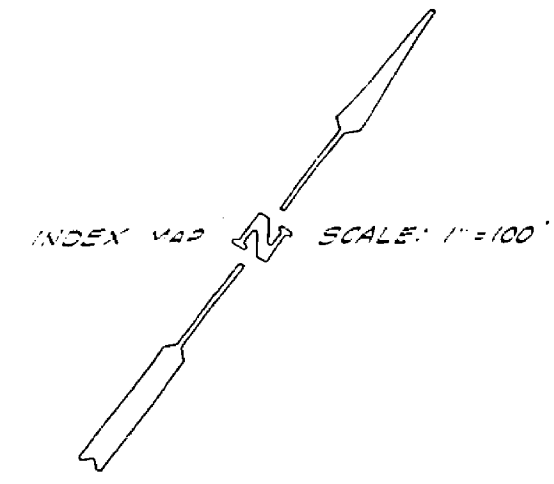


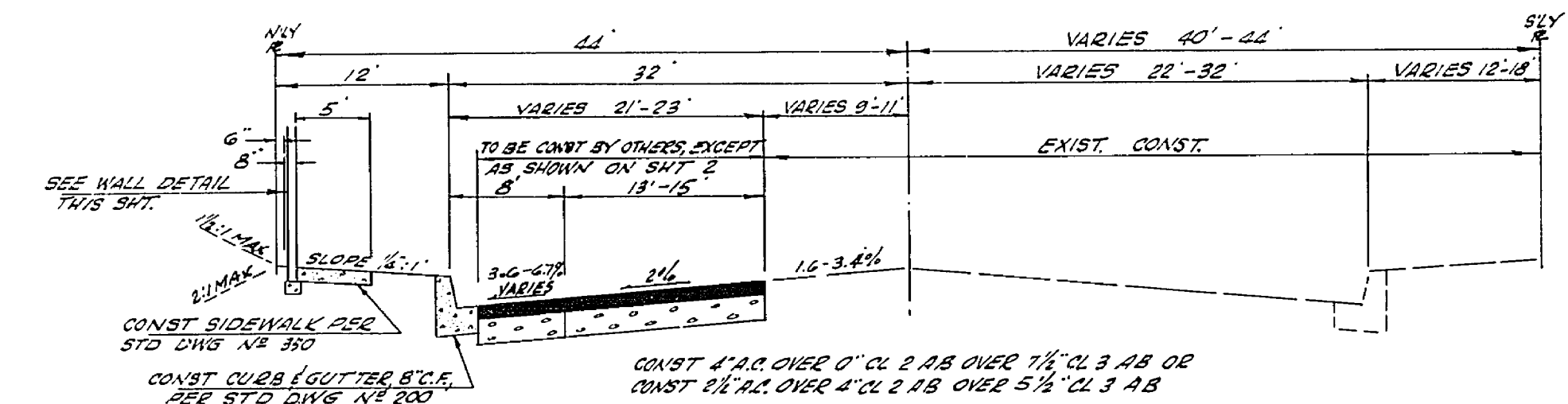
QUANTITY ESTIMATE	
STREET EXCAVATION	446.4 CY
6" CURB & GUTTER	1361 L.F.
8" CURB & GUTTER	1678 L.F.
CURB ONLY @ X-GUTTER	255 L.F.
CROSS GUTTER	2443 S.F.
SIDEWALK	17,187 S.F.
BARBWADE	72 L.F.
2 1/2" A.C.	61,469 S.F.
6" A.B. CL 2	61,469 S.F.
2 1/2" A.C. OVER 4" A.B.	2,330 S.F.
PLINT REMOVAL	11,100 S.F.
BLOCK WALL	844 L.F.
BLOCKWALL H VARIES 3'-	105 L.F.
TREE REMOVAL	5 SH.
REDWOOD HEADER	1224 L.F.
1" X 2" SIGNS	4 EA
STREET SIGNS	3 EA
BLOCK WALL ALONG E'LY TRACT BOUNDARY - SEE GRADING PLAN	680 L.F.

- GENERAL NOTES
- IT SHALL BE THE RESPONSIBILITY OF THE CONTRACTOR TO CLEAR THE RIGHT OF WAY IN ACCORDANCE WITH THE PROVISIONS OF LAW AS IT AFFECTS EACH UTILITY, INCLUDING IRRIGATION LINES AND APPURTENANCES, AND AT NO COST TO THE CITY.
  - CONSTRUCTION SHALL BE IN ACCORDANCE WITH THE CITY OF RIVERSIDE, DEPARTMENT OF PUBLIC WORKS SPECIFICATIONS NO. 461 AND STANDARD DRAWINGS.
  - PRIME COAT, SEAL COAT, AND PAINT BINDER ARE REQUIRED.
  - GRADING WILL REQUIRE A PERMIT UNDER ORDINANCE 3093 FOR A CUT OR FILL EXCEEDING 100 CUBIC YARDS, OR A FILL OVER ONE FOOT IN DEPTH.
  - TRIM EDGE OF EXISTING PAVEMENT, WHERE NEW PAVING JOINS EXISTING PAVEMENT, TO A CLEAN, STRAIGHT LINE. CONSTRUCT MATCH-UP PAVING AS SHOWN AND OVERLAY PAVING AS DIRECTED IN THE FIELD TO PRODUCE A SMOOTH CROWN SECTION.

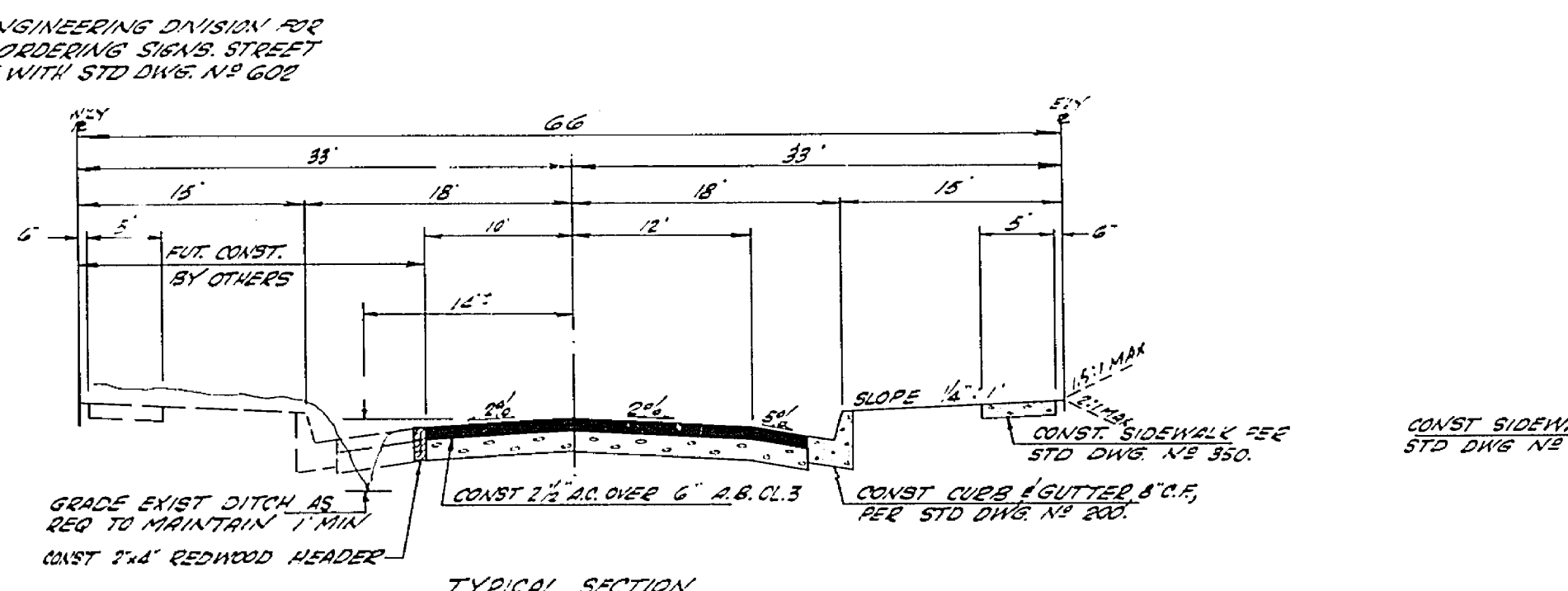
STREET NAME SCHEDULE	
A	FILLMORE ST
	WYBOURN AVE
B	WYBOURN AVE
	PICKWICK ST
C	WYBOURN AVE
	NUTMEG CIRCLE



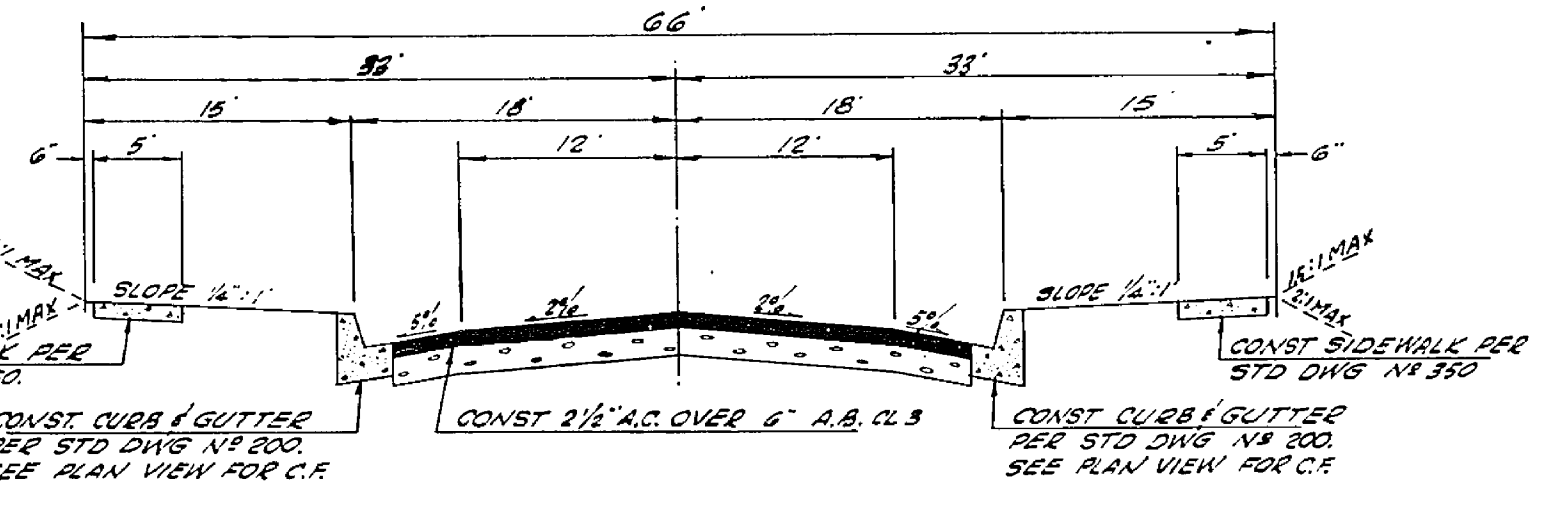
TYPICAL SECTION  
PICKWICK STREET  
NUTMEG CIRCLE  
T.I. 5.0



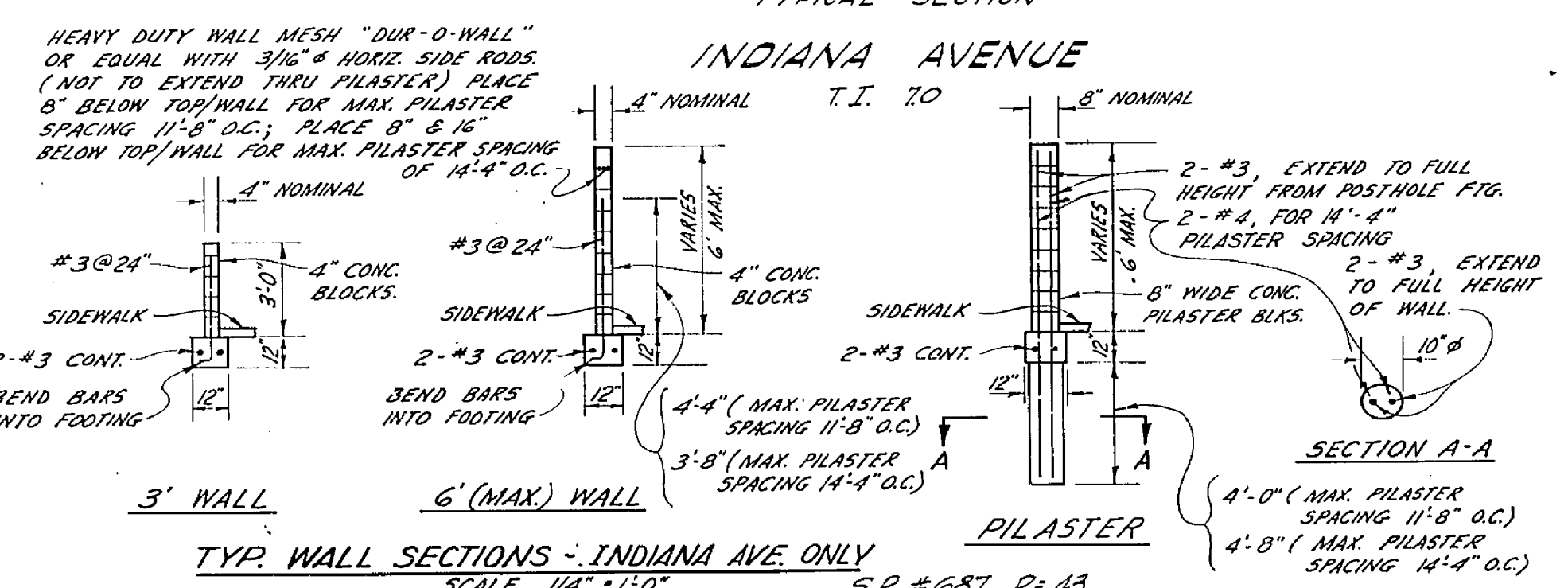
TYPICAL SECTION  
INDIANA AVENUE  
T.I. 7.0



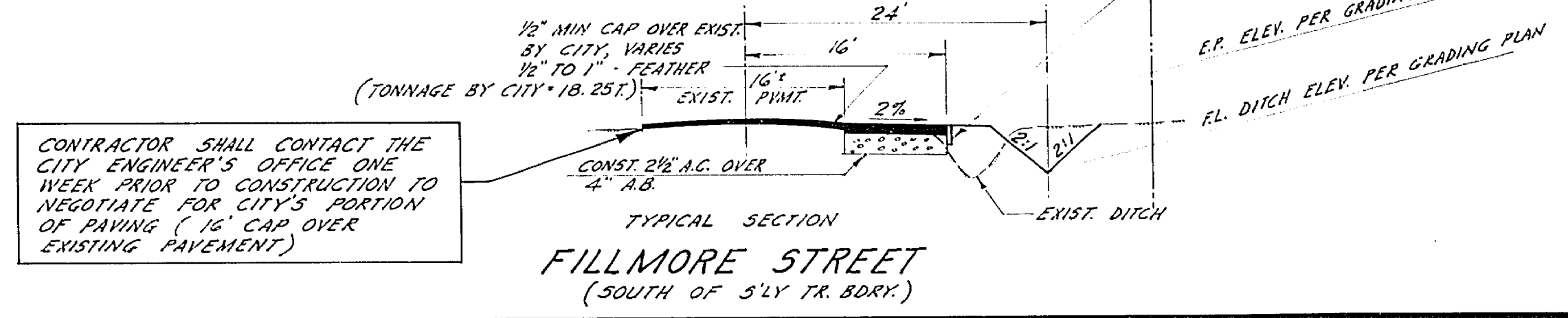
TYPICAL SECTION  
FILLMORE STREET (ADJAC. TO TRACT)  
T.I. 5.0



TYPICAL SECTION  
WYBOURN AVENUE  
T.I. 5.0



TYP. WALL SECTIONS - INDIANA AVE. ONLY  
SCALE 1/4" = 1'-0"



TYPICAL SECTION  
FILLMORE STREET  
(SOUTH OF 5'LY TR. BDRY.)  
T.I. 5.0

CONTRACTOR SHALL CONTACT THE CITY ENGINEER'S OFFICE ONE WEEK PRIOR TO CONSTRUCTION TO NEGOTIATE FOR CITY'S PORTION OF PAVING (1/2" CAP OVER EXISTING PAVEMENT)

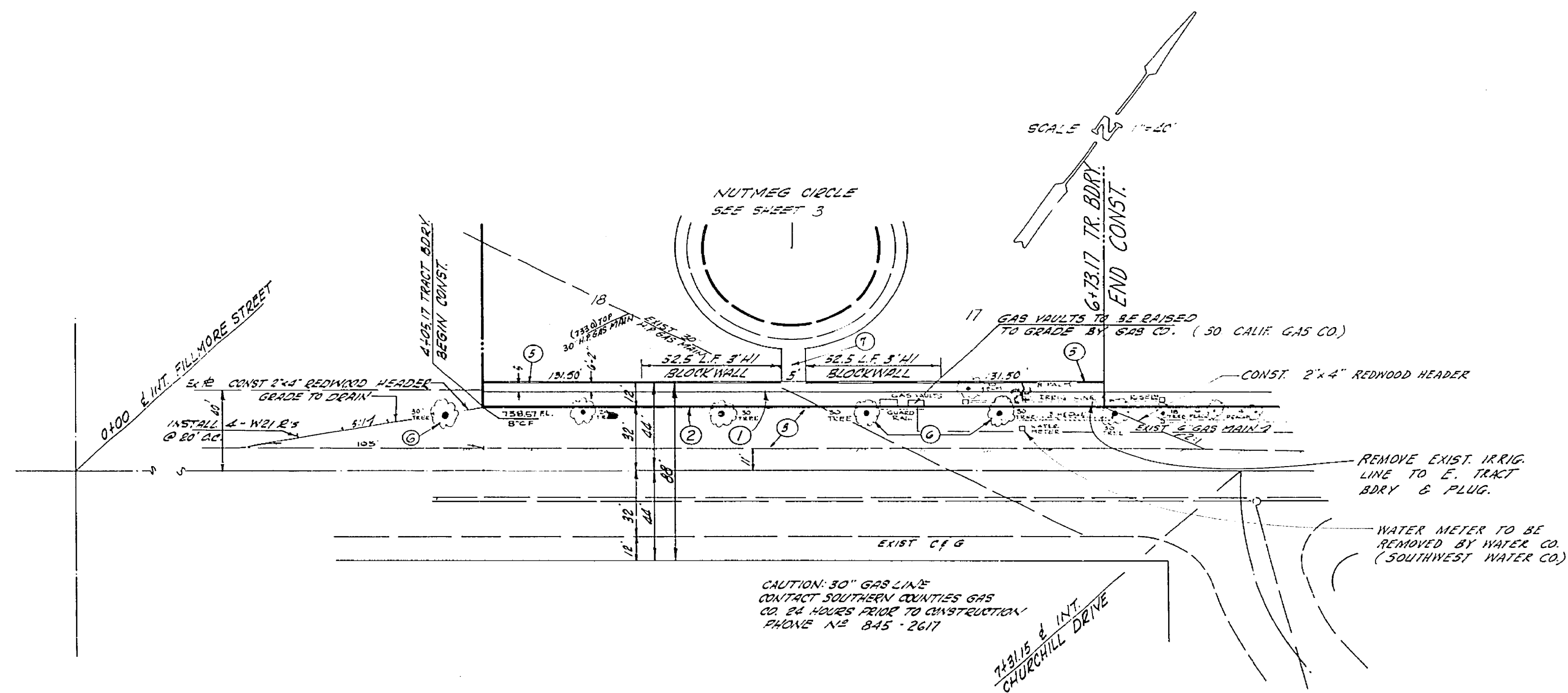
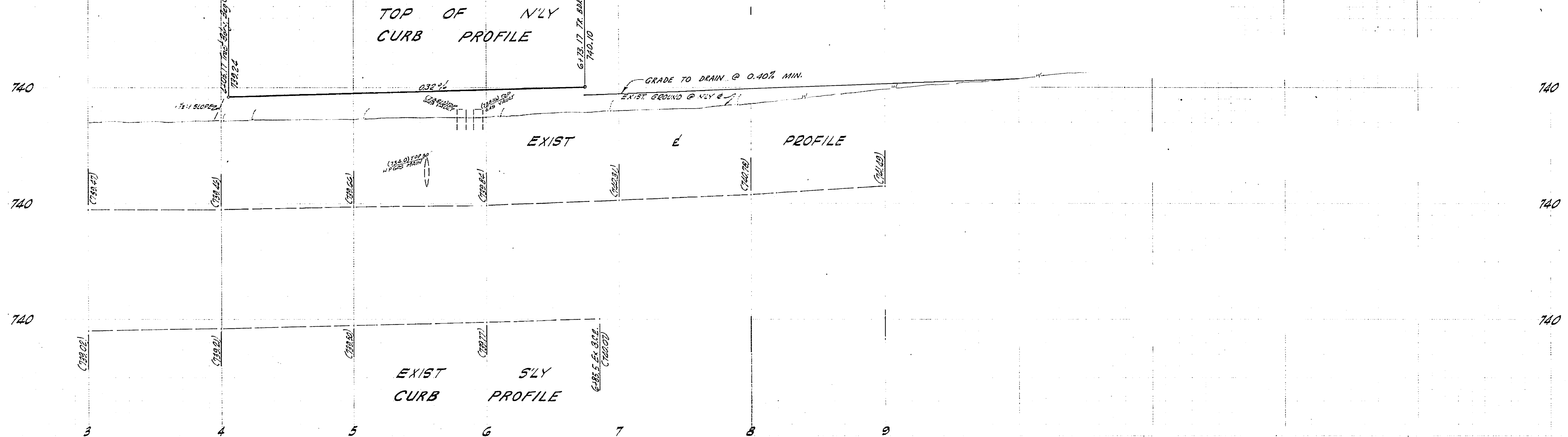
PLANS PREPARED UNDER SUPERVISION OF:  
DATE: 7/1/67  
IN THE OFFICES OF  
13794 BEACH BLVD  
WESTMINSTER, CALIFORNIA

CITY OF RIVERSIDE, CALIFORNIA  
DEPARTMENT OF PUBLIC WORKS  
APPROVED BY: [Signature]  
DATE: 6-14-68

TRACT NO. 3669  
TITLE SHEET

PROJECT NO.  
R-1245  
SHEET 1 OF 5  
FILE NO.

HORIZ. SCALE: 1" = 40' VERT. SCALE: 1" = 4'



INDIANA

AVENUE

- CONSTRUCTION NOTES
- 1 CONST SIDEWALK PER STD DWS NO 350.
  - 2 CONST CURB & GUTTER, 8" C.E. PER STD DWS NO 200 A.D. OVER AS TO BE CONST. BY OTHERS, SEE SECTION IN SHEET 1.
  - 3 CONST 6" H. BLOCK WALL.
  - 4 REMOVE EXIST TREES STA 3+50 TO 7+00
  - 5 CONST 5 WIDE SIDEWALK PER STD DWS NO 350

PLANS PREPARED UNDER SUPERVISION OF:  
 JAMES E. WATKINSON, DATE: 7/10/67  
 IN THE OFFICES OF  
 WOODHEIS-TRINDLE-NEILON  
 1879A BEACH BLVD  
 WESTMINSTER, CALIFORNIA

IRIGATION LINE REMOVAL APPROVED  
 Howard L. Chason  
 IRIGATION CO.

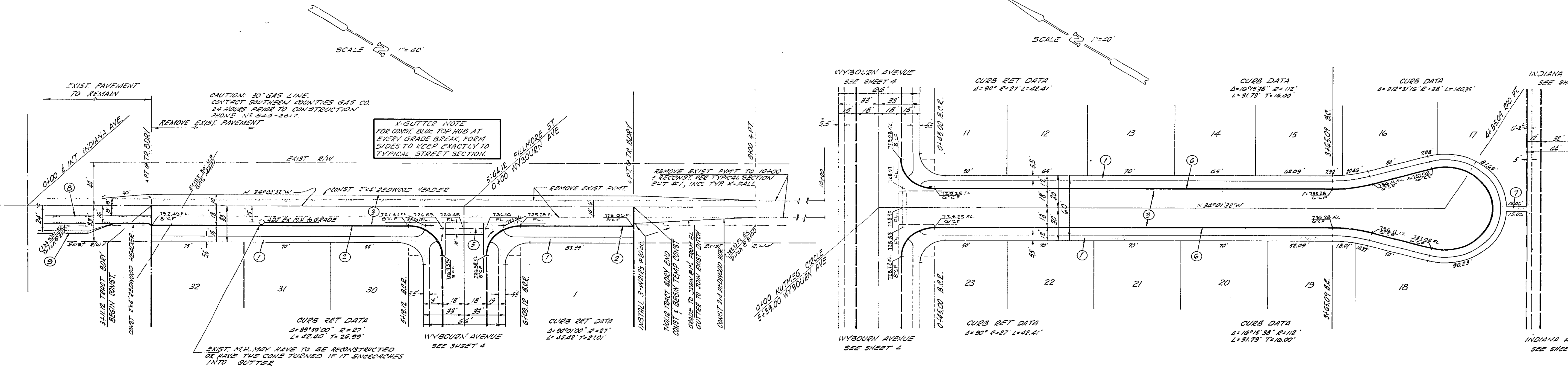
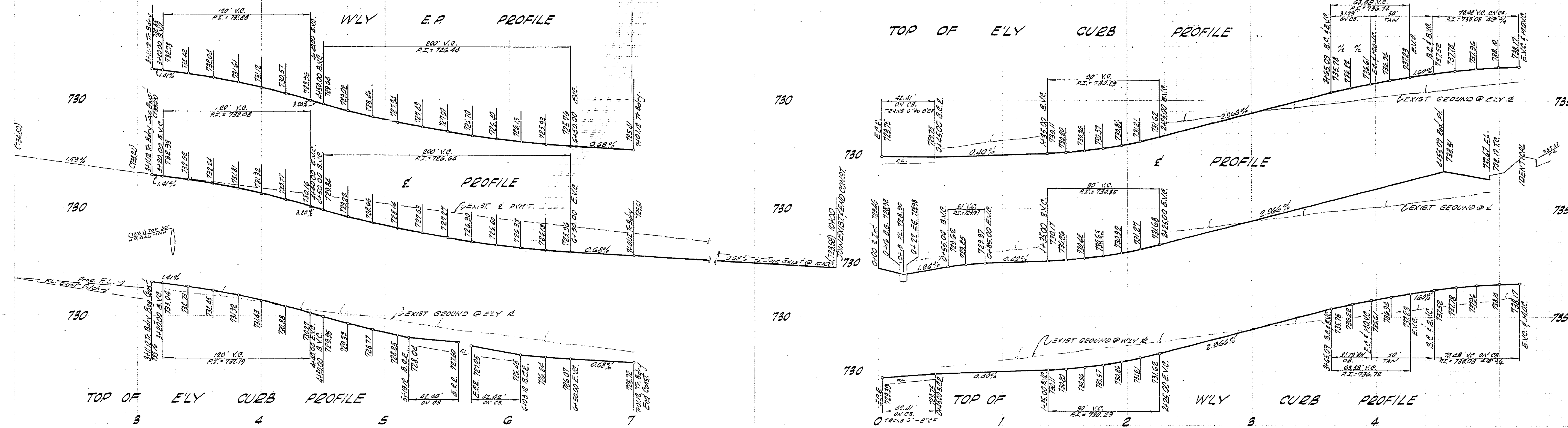
MARK	REVISIONS	APPR.	DATE

CITY OF RIVERSIDE, CALIFORNIA DEPARTMENT OF PUBLIC WORKS			
APPROVED BY	BY	DATE	APPROVED BY
OFFICE ENGINEER	J.E.W.	6-4	J.E.W.
PARK DEPARTMENT	J.E.W.	6-4	J.E.W.
TRAFFIC DIVISION	J.E.W.	6-4	J.E.W.
ASSISTANT CITY ENG.	J.E.W.	6-4	J.E.W.
DATE:	6-14-68		

INDIANA AVENUE  
 FROM 408.17' NELY 6' 613.17' NELY  
 OF FULLMORE STREET  
 TRACT NO 3669

PROJECT NO.  
**R-1245**  
 SHEET 2 OF 5  
 FILE NO.

HORIZ. SCALE: 1" = 40'  
 VERT. SCALE: 1" = 4'



**FILLMORE STREET NUTMEG CIRCLE**

- CONSTRUCTION NOTES**
- 1 CONST SIDEWALK PER STD DWG NO 350.
  - 2 CONST CURB & GUTTER, 6" C, PER STD DWG NO 200.
  - 3 CONST 2 1/2" AC OVER 4" A.S. 12-3
  - 4 CONST CROSS GUTTER & APRON PER STD DWG NO 200.
  - 5 CONST CURB & GUTTER, 6" C, PER STD DWG NO 200.
  - 6 CONST 5" WIDE SIDEWALK PER STD DWG NO 350.
  - 7 CONST 2 1/2" AC PAVEMENT OVER 4" A.S. SEE TYR SECTION ON SHT. 1 AND GRADING PLAN.
  - 8 CONST 2 1/2" AC PAVEMENT OVER 4" A.S. SEE TYR SECTION ON SHT. 1 AND GRADING PLAN.
  - 9 CONST 2 1/2" AC PAVEMENT OVER 4" A.S. SEE TYR SECTION ON SHT. 1 AND GRADING PLAN.

PLANS PREPARED UNDER SUPERVISION OF:  
*James E. Whitelaw* DATE 5/19/62  
 JAMES E. WHITELAW R.C.E. 14385  
 IN THE OFFICES OF  
 VOORHEIS-TRIVALE-NIELSON  
 13794 BEACH BLVD.  
 WESTMINSTER, CALIFORNIA

MARK	REVISIONS	APP'D.	DATE
DESIGNED BY	JK	CHECKED BY	JLE

CITY OF RIVERSIDE, CALIFORNIA  
 DEPARTMENT OF PUBLIC WORKS

APPROVED BY: *James E. Whitelaw*  
 OFFICE ENGINEER  
 DATE: 6-14-62

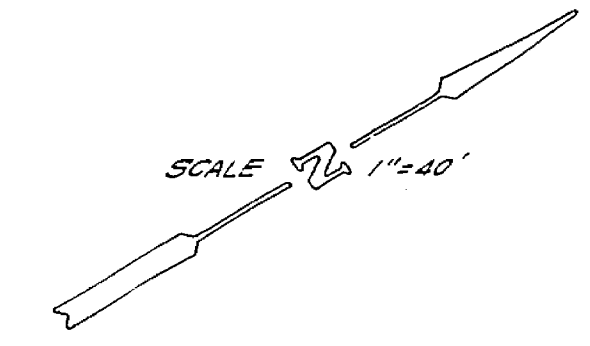
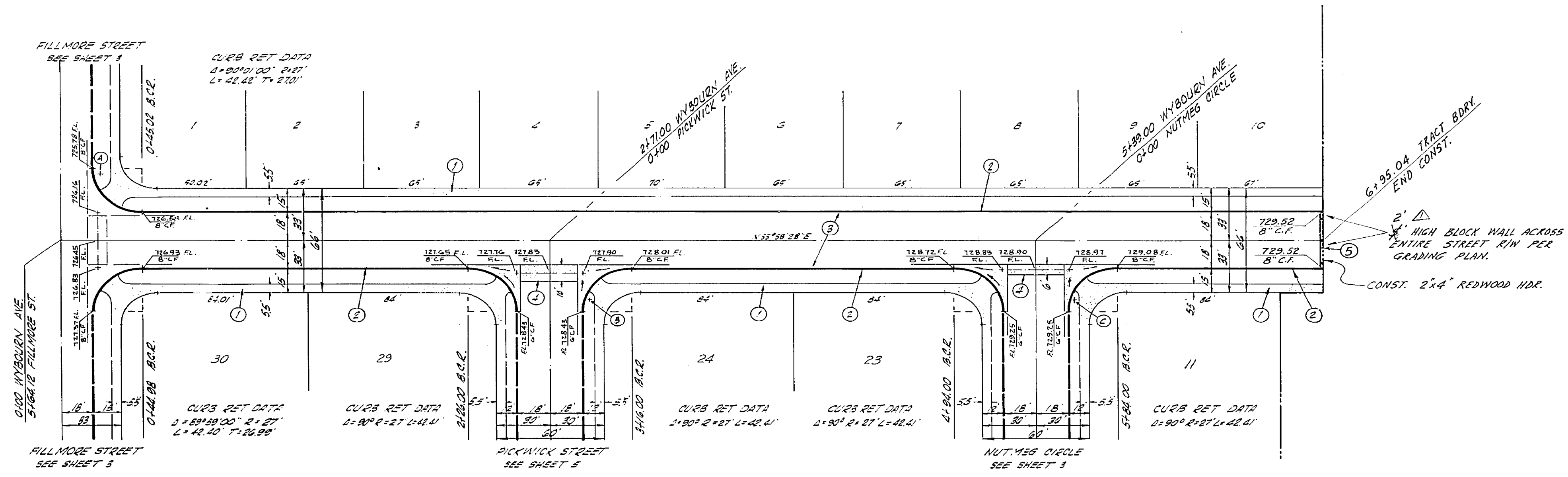
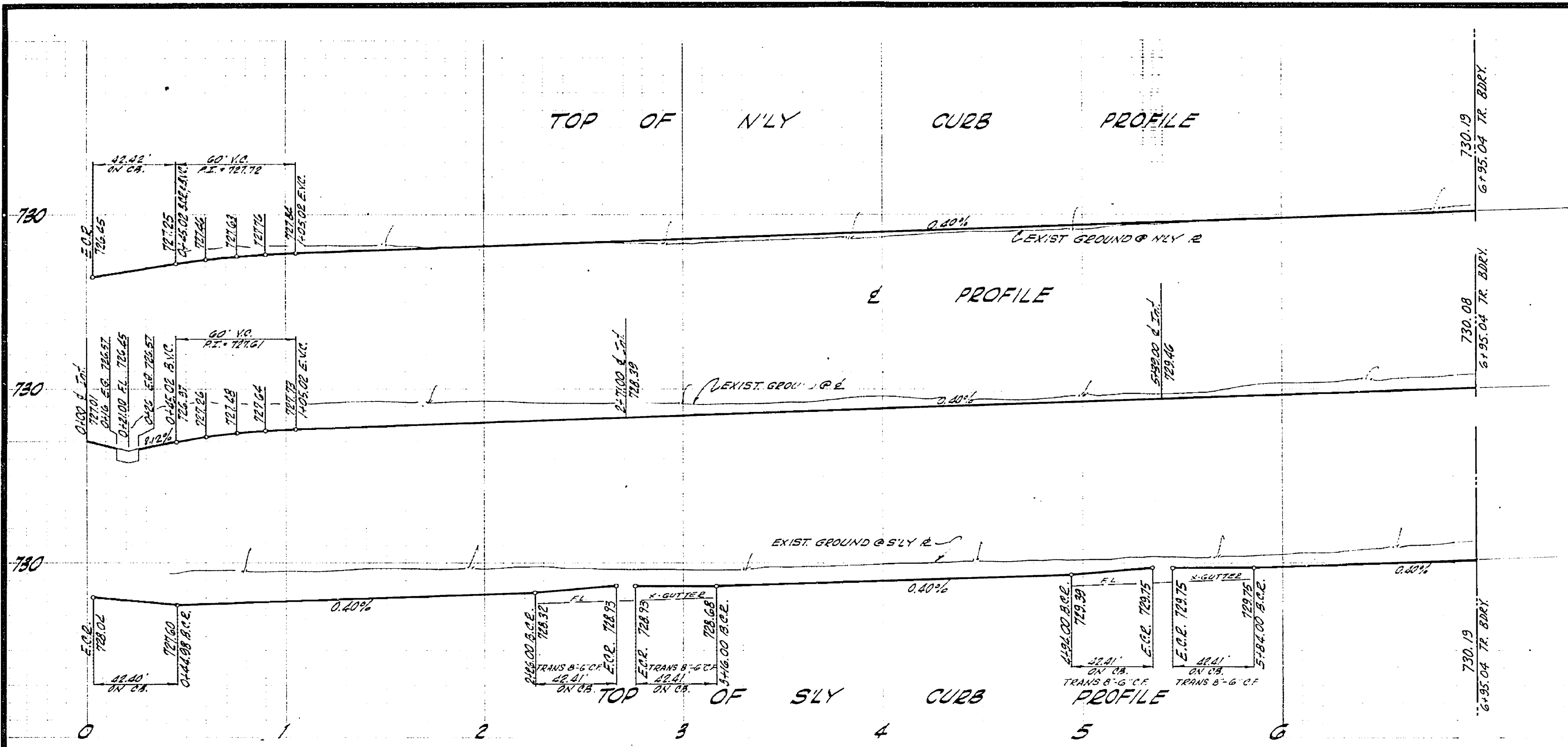
APPROVED BY: *James E. Whitelaw*  
 DIRECTOR OF PUBLIC WORKS  
 DATE: 6-14-62

**FILLMORE STREET**  
 FROM 3112 1/2 TO 2012 N. INDIANA AVE.  
 TRACT NO 3669  
**NUTMEG CIRCLE**  
 WYBOURN AVE TO INDIANA AVE.

PROJECT NO.  
**R-1245**  
 SHEET 3 OF 5  
 FILE NO.

HORIZ. SCALE: 1" = 40' VERT. SCALE: 1" = 4'



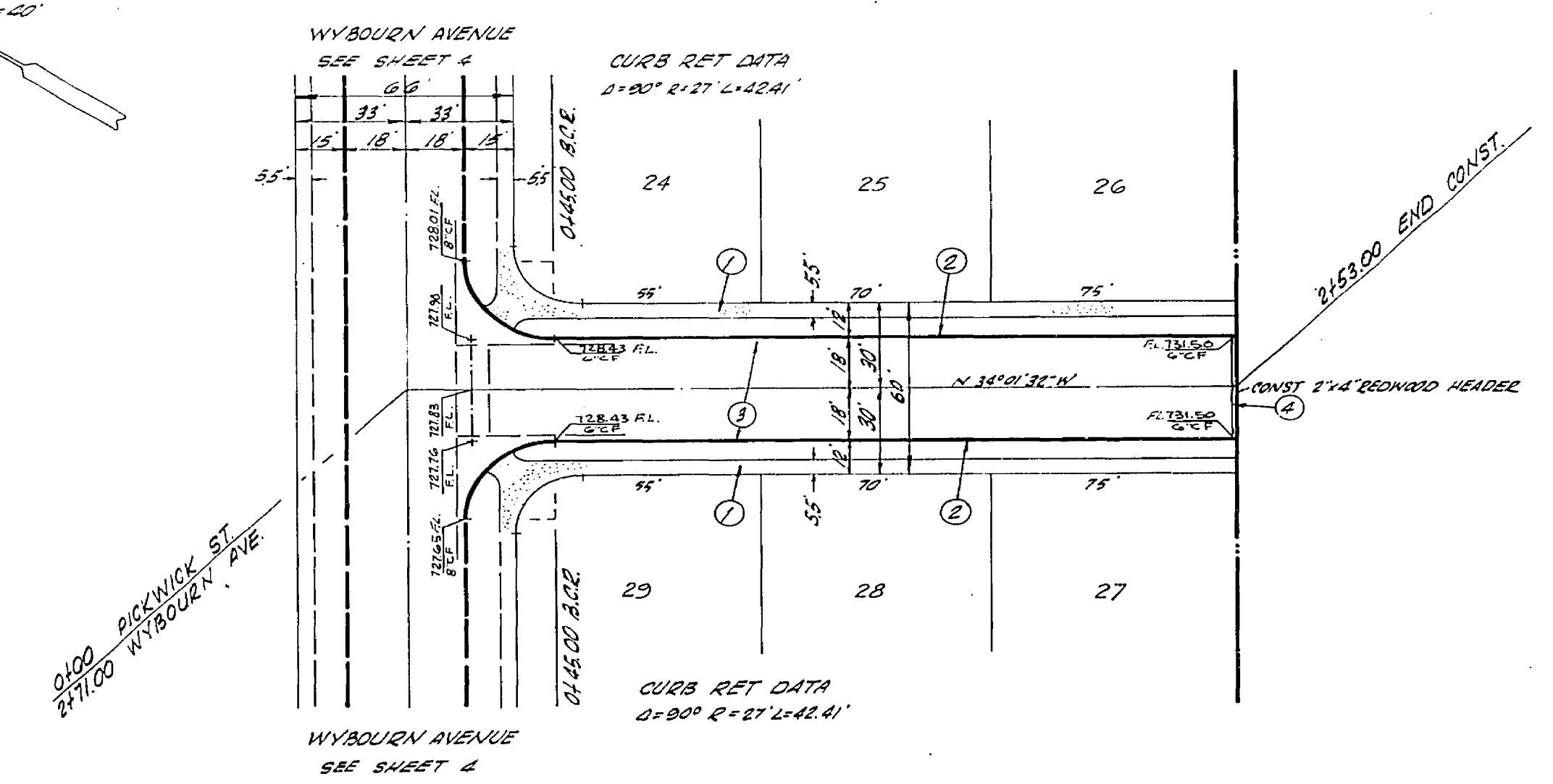
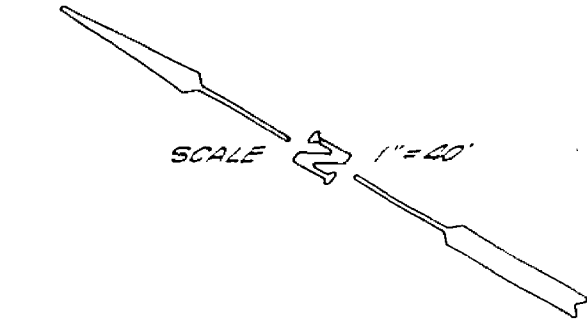
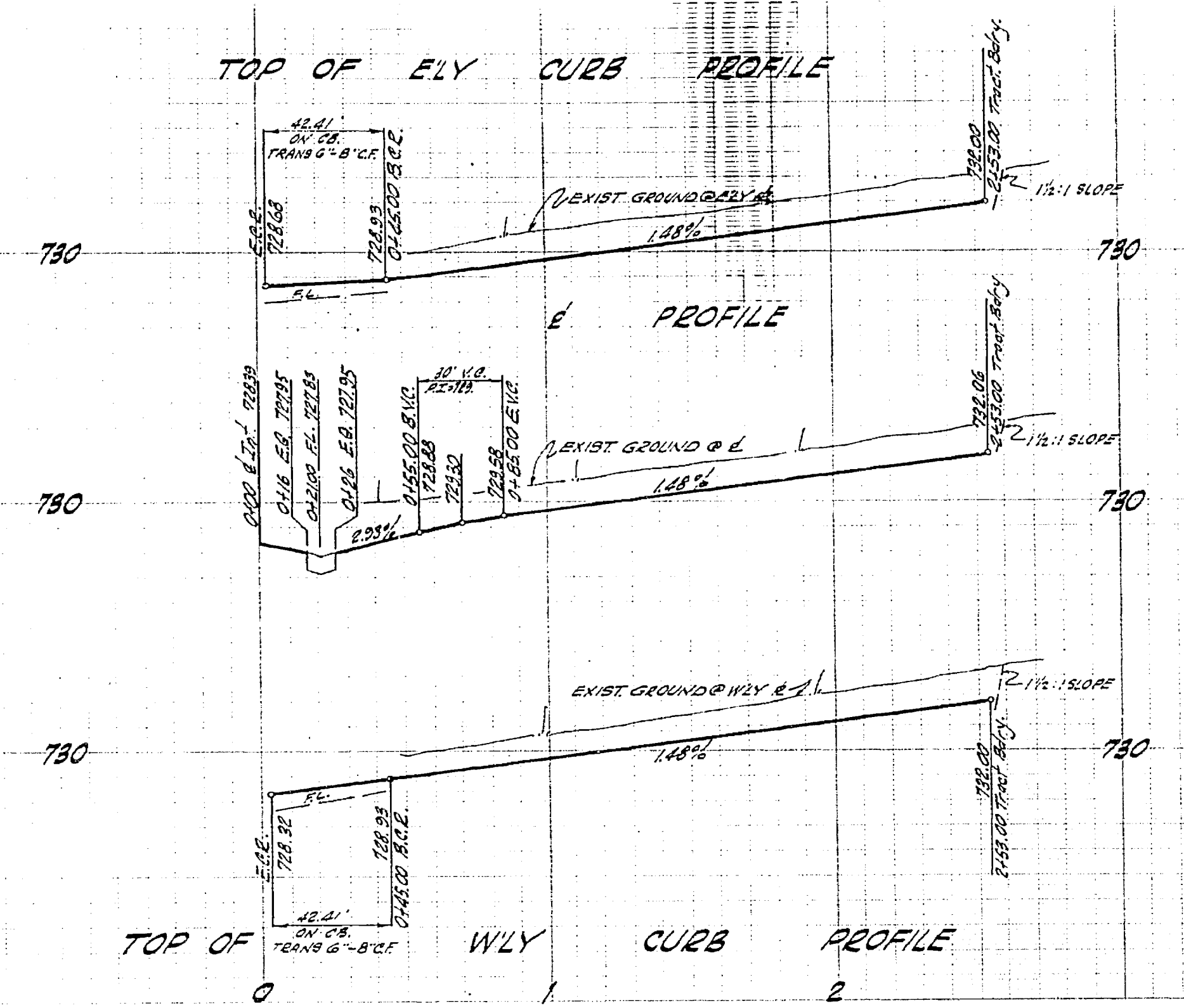


WYBOURN

AVENUE

- CONSTRUCTION NOTES
- 1 CONST. SIDEWALK PER STD. DWS. NO. 360.
  - 2 CONST. CURB & GUTTER, 8" C.F. PER STD. DWS. NO. 200.
  - 3 CONST. 1 1/2" A.C. OVER 5" 2.5" CL 3
  - 4 CONST. CROSS GUTTER & APRON PER STD. DWS. NO. 200.
  - 5 CONST. 36" L.F. OF BARRICADE PER STD. DWS. NO. 180.

PLANS PREPARED UNDER SUPERVISION OF: <i>James E. Whitteant</i> DATE 1/16/67 IN THE OFFICES OF VOORHEIS-TRINDLE-NELSON 13794 BEACH BLVD. WESTMINSTER, CALIFORNIA	Proposed height of blank wall across street 1-17-70	CITY OF RIVERSIDE, CALIFORNIA DEPARTMENT OF PUBLIC WORKS	WYBOURN AVENUE FROM FILLMORE ST. TO 695.04 EAST OF FILLMORE ST. TRACT NO. 3669	PROJECT NO. <b>R-1245</b> SHEET 4 OF 5... FILE NO.
	DESIGNED BY <i>JE</i> DRAWN BY <i>JE</i> CHECKED BY <i>JE</i>	APPROVED BY <i>James E. Whitteant</i> DATE 1-17-70 OFFICE ENGINEER PARK DEPARTMENT TRAFFIC DIVISION ASSISTANT CITY ENG.	APPROVED BY <i>Thomas J. ...</i> DIRECTOR OF PUBLIC WORKS DATE 6-14-69	HORIZ. SCALE: 1" = 40' VERT. SCALE: 1" = 4'



- CONSTRUCTION NOTES
- ① CONST SIDEWALK PER STD DWS #135.
  - ② CONST CURB 4" SLOTTED, 6" H.F. PER STD DWS #130.
  - ③ CONST 25' A.D. OVER 3" A.B. D.B.
  - ④ CONST 36' L.F. OF BARRICADE PER STD DWS #130.

PLANS PREPARED UNDER SUPERVISION OF: <i>James S. Whitelaw</i> JAMES S. WHITELAW P.E. 14385		CITY OF RIVERSIDE, CALIFORNIA DEPARTMENT OF PUBLIC WORKS		PROJECT NO. <b>R-1245</b>
IN THE OFFICES OF VOORHEIS-TRINDLE-NELSON 13704 BEACH BLVD. WESTMINSTER, CALIFORNIA		APPROVED BY OFFICE ENGINEER PARK DEPARTMENT TRAFFIC DIVISION ASSISTANT CITY ENGINEER <i>[Signature]</i> DATE 6-14-69	APPROVED BY DIRECTOR OF PUBLIC WORKS <i>[Signature]</i> DATE 6-14-69	SHEET 5 OF 5 FILE NO.
DESIGNED BY JL	DRAWN BY JL	CHECKED BY JL	HORIZ. SCALE: 1" = 40'	VERT. SCALE: 1" = 4'

**PICKWICK STREET**

**PICKWICK STREET**  
WYBOURN AVE TO 253' SOUTH OF  
WYBOURN AVE.  
TRACT 3669