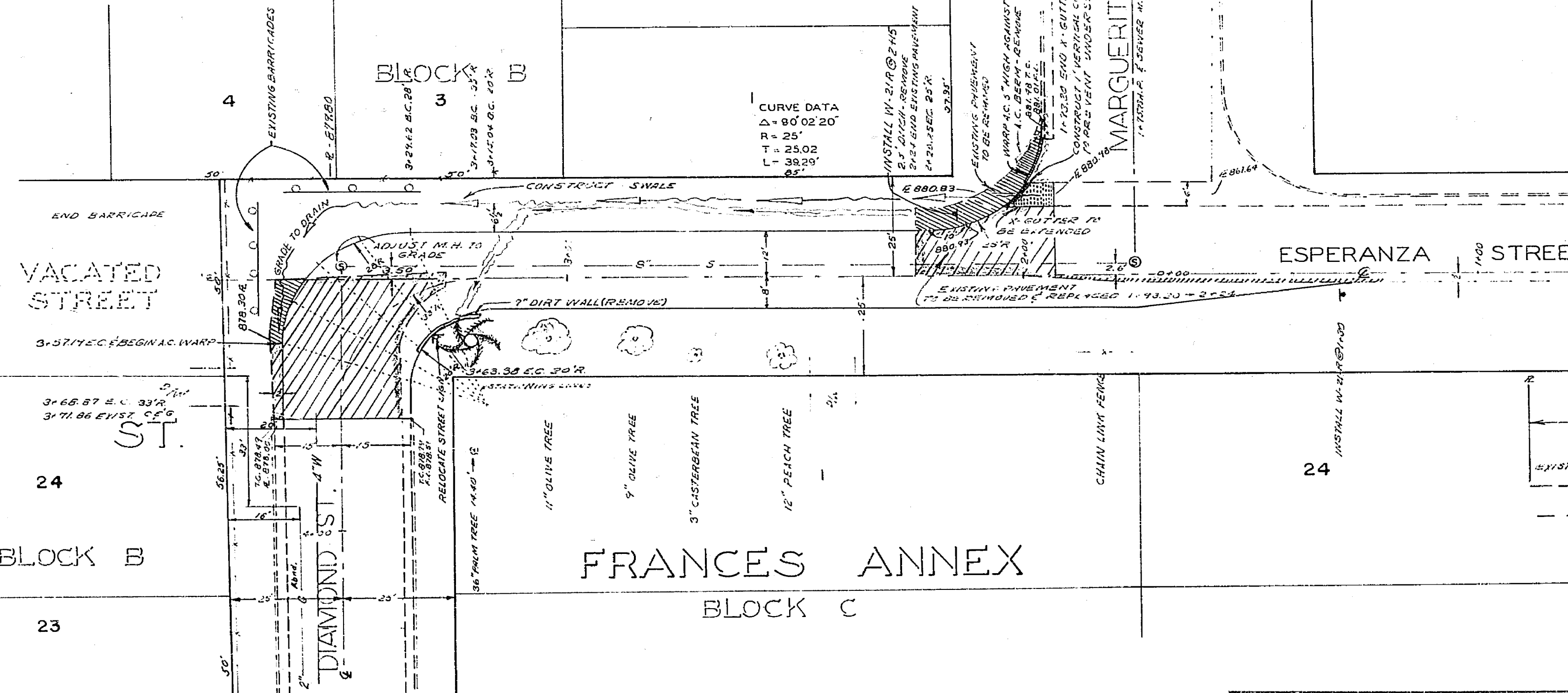
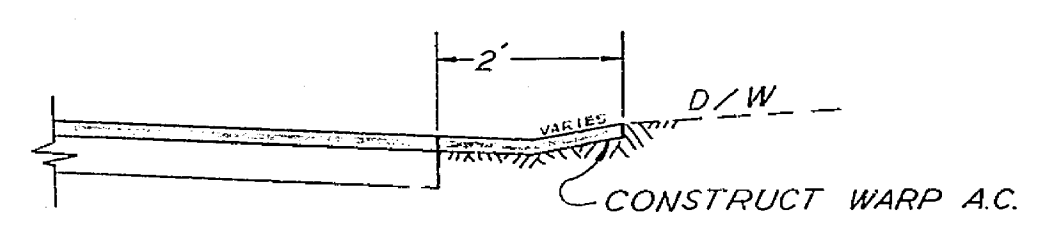


SANTA MARGARITA HEIGHTS

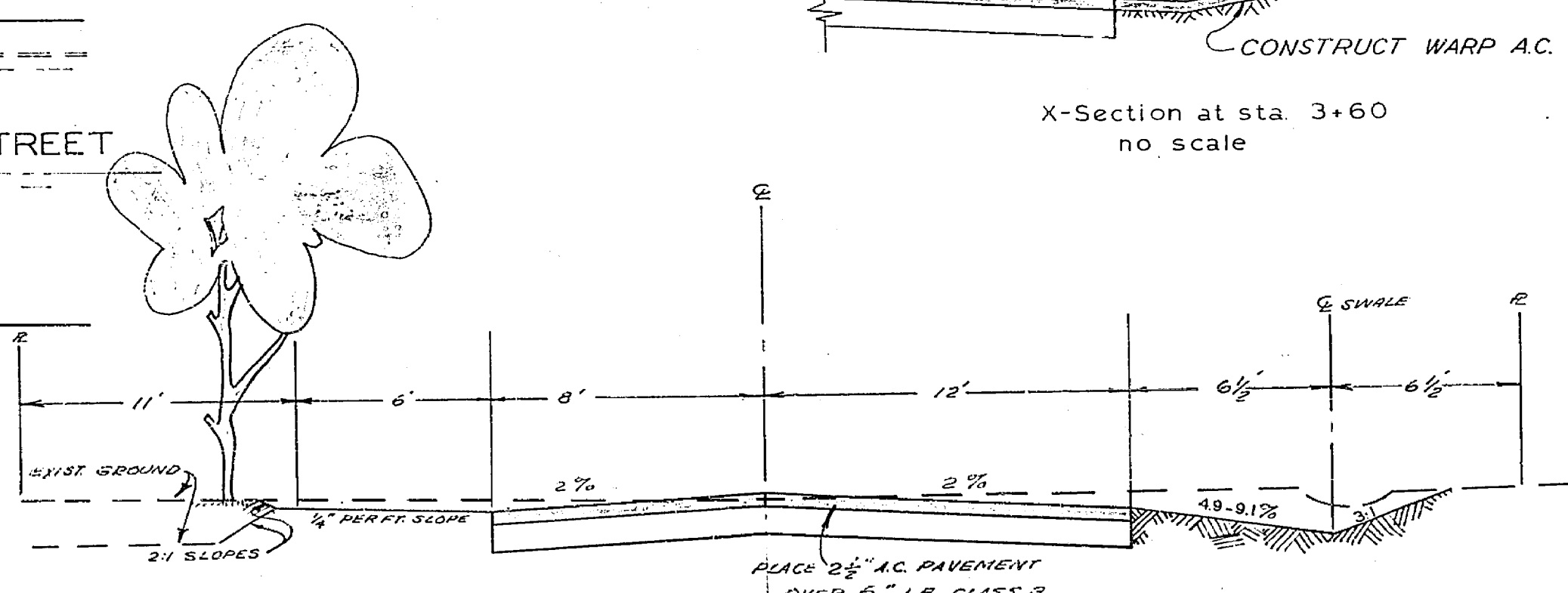


	EXISTING PAVEMENT EDGE
	REMOVE AND REPLACE PAVEMENT
	REMOVE PAVEMENT
	CONSTRUCT X-GUTTER

SHADING LEGEND



X-Section at sta. 3+60
no scale



TYPICAL SECTION
NO SCALE

CURVE DATA
 $\Delta = 90^{\circ}00'51''$
 $R = 28'$
 $T = 28.01'$
 $L = 43.99'$
 $\Delta = 90^{\circ}00'51''$
 $R = 33'$
 $T = 33.01'$
 $L = 51.84'$
 $\Delta = 90^{\circ}00'51''$
 $R = 20'$
 $T = 20'$
 $L = 31.42'$

CITY OF RIVERSIDE, CALIFORNIA DEPARTMENT OF PUBLIC WORKS		REFERENCE — F/B 678 51-58		PROJECT NO. 3156	
APPROVED BY OFFICE ENGINEER TRAFFIC DIVISION ASSISTANT CITY ENG.		BY DATE DATE		APPROVED BY DIRECTOR OF PUBLIC WORKS	
DESIGNED BY		DRAWN BY		CHECKED BY	
REVISIONS		APPR. DATE		DATE 5-15-68	
ESPERANZA STREET		BETWEEN DIAMOND STREET MARGUERITA AVE.		R-1270	
HORIZ. SCALE: 1" = 20'		VERT. SCALE: 1" = 4'		SHEET 1 OF 1	