

BENCH MARK
CHISELED \square ON CURB ON
WEST SIDE CAPISTRANO WAY
FRONT OF HOUSE NO. 6735.
ELEVATION = 791.92 FT.

ESTIMATE OF QUANTITIES	
2 1/2" PLANT MIX SURFACING	19443 Sq. Ft.
COMB. CURB & GUTTER	1164 Lm. Ft.
6" CROSS-GUTTER	532 Sq. Ft.
5" SIDEWALK	5740 Sq. Ft.
BARRICADE	1 Only

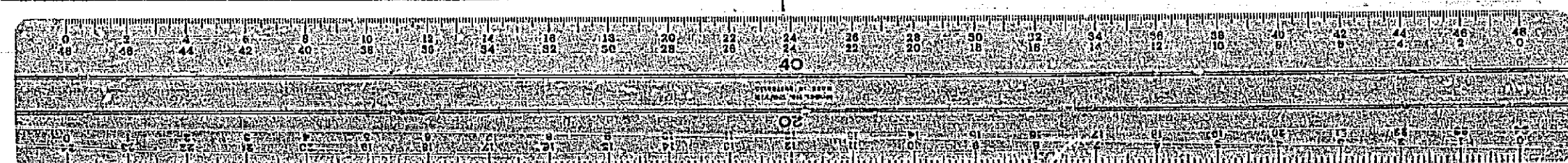
J.F. DAVIDSON-CIVIL ENGINEER
RE. NO. 862
RIVERSIDE, CALIFORNIA
APPROVED BY *[Signature]* DATE *2-21-57*

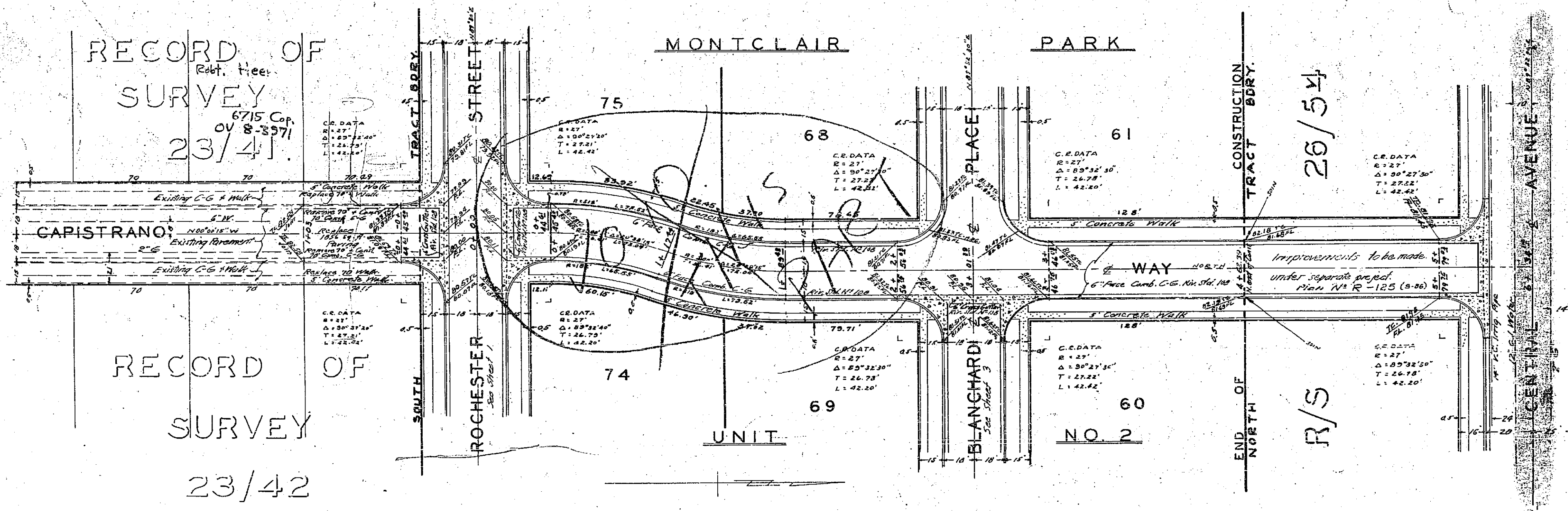
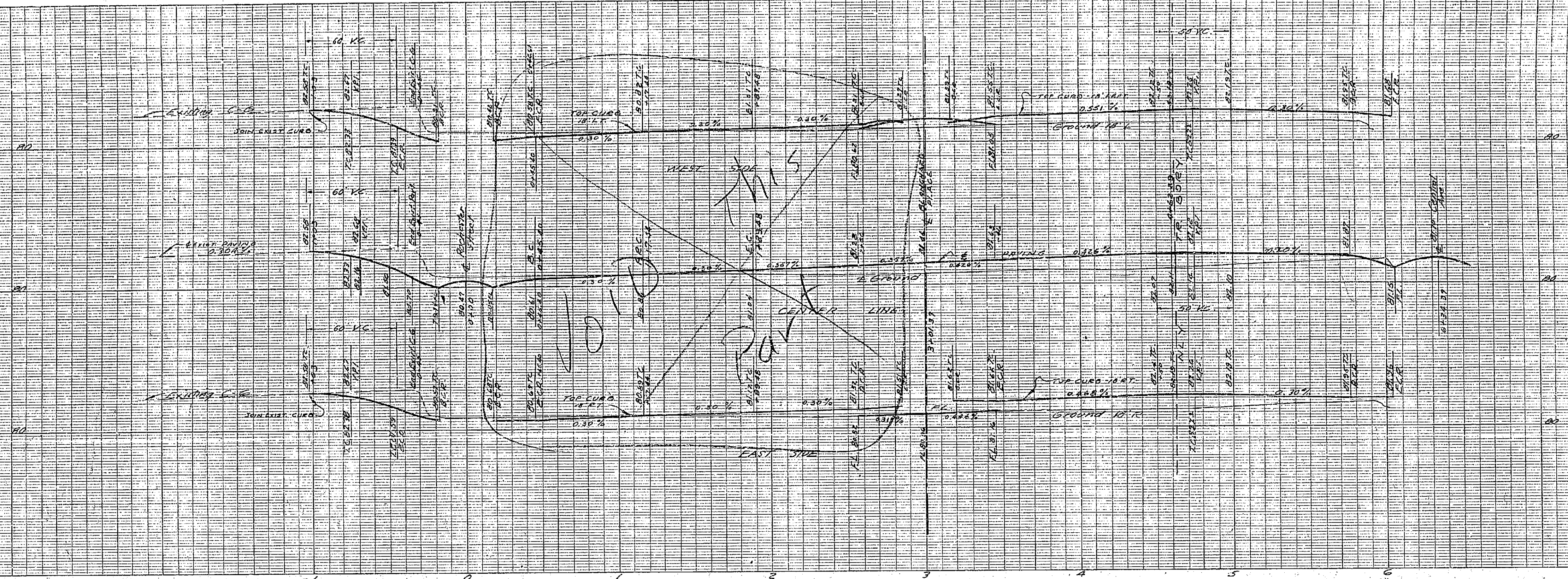
CITY OF RIVERSIDE, CALIFORNIA
DEPARTMENT OF PUBLIC WORKS

STREET PLAN & PROFILE
CAPISTRANO WAY
BLANCHARD PLACE

UNIT NO. 2
MONTCLAIR PARK
HORIZ. SCALE 1" = 40' VERT. SCALE 1" = 4'

APPROVED BY *[Signature]* NO. R-128
DIRECTOR OF PUBLIC WORKS
DATE *2-21-57* SHEET 1 OF 3





RECORD OF SURVEY
 Ref. files
 6715 Cap.
 07-8-3971
 23/41

RECORD OF SURVEY
 23/42

CENTER LINE CURVE DEFLECTIONS

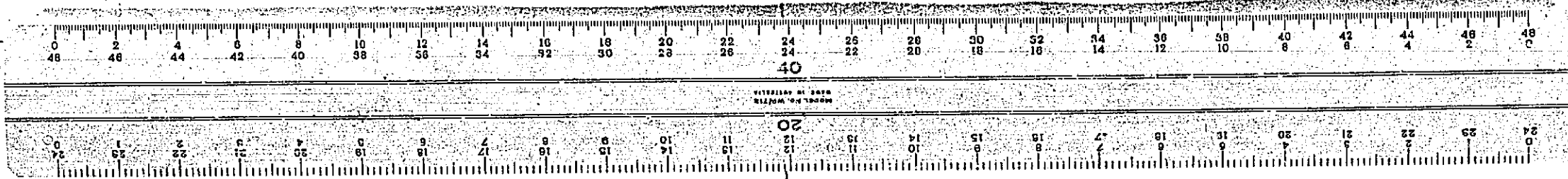
Sta. 0+45.40	B.S. 0+00	Obj. 0° 39' 32" R	Ch. = 4.50
0+50		7° 14' 28"	24.97
0+75		7° 49' 16"	24.97
1+00		10° 19' 08"	17.43
1+17.44			
Sta. 1+00.48	B.S. 3+01.33	Obj. 2° 04' 27" R	Ch. = 14.88
1+25		5° 39' 18"	24.97
1+50		9° 14' 09"	24.97
1+77.44		10° 19' 07"	7.54

See Sheet 1 for Typical Section

B.M. Chiseled Ben curb
 W. Side Capistrano Way
 Front of No. 14 6735
 Elev. = 781.52

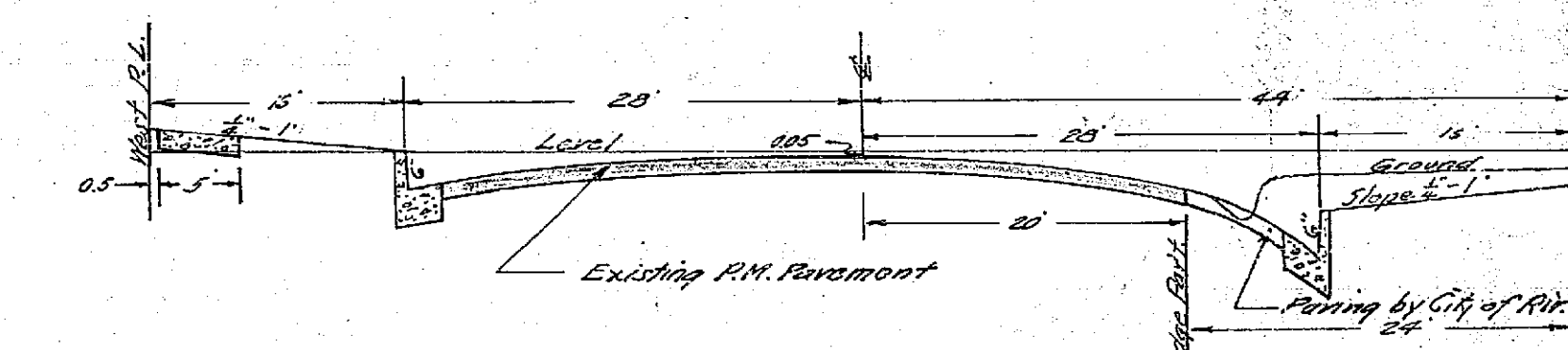
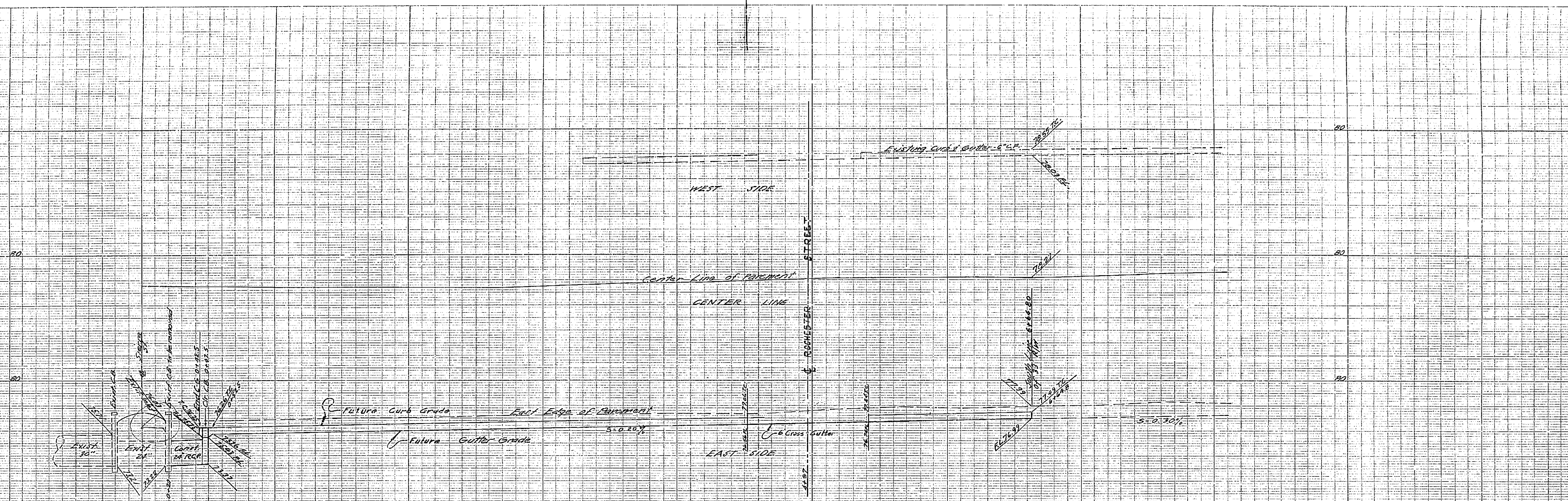
Unit 3, R-255

J.F. DAVIDSON - CIVIL ENGINEER
 R.E. No 862
 RIVERSIDE, CALIFORNIA
 APPROVED BY _____ DATE _____
 CITY OF RIVERSIDE, CALIFORNIA
 DEPARTMENT OF PUBLIC WORKS
 STREET PLAN & PROFILE
 CAPISTRANO WAY
 MONTCLAIR PARK UNIT #2
 HORIZ. SCALE 1"=40' VERT. SCALE 1"=4'
 APPROVED BY _____ DATE _____
 Director of Public Works
 SHEET 2 OF 2

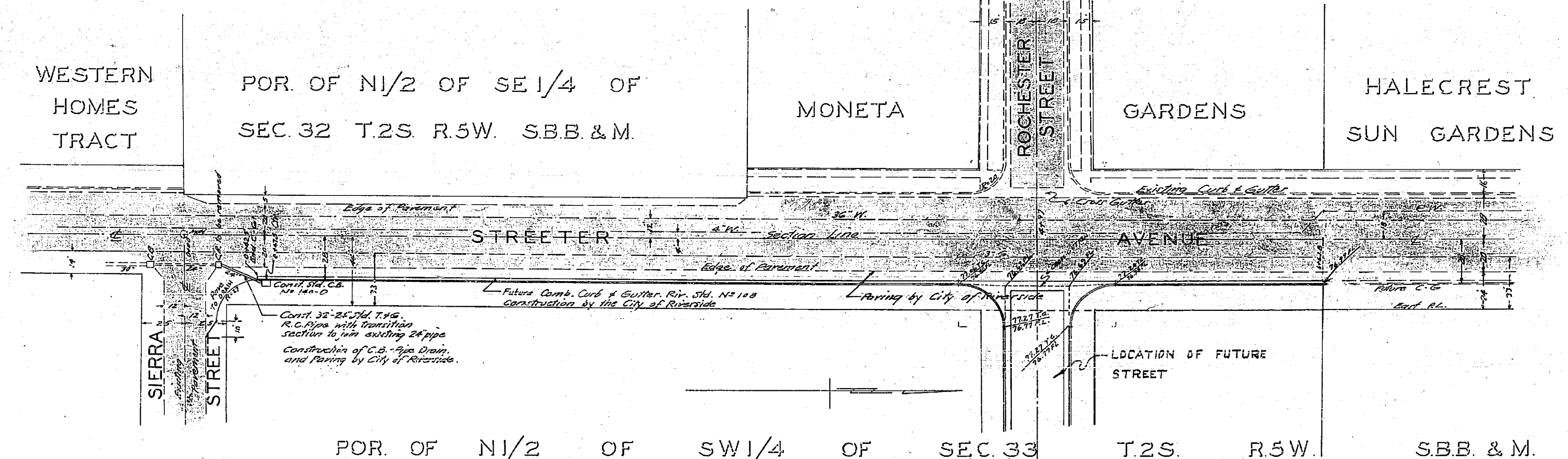


LIMITS OF SHEET OR PORTION THEREOF
AS SHOWN BY THE DOTTED LINE
AND THE WORDS "PART" OR "PARTS"

SCALE OF SHEET
AS SHOWN BY THE DOTTED LINE
AND THE WORDS "SCALE" OR "SCALES"



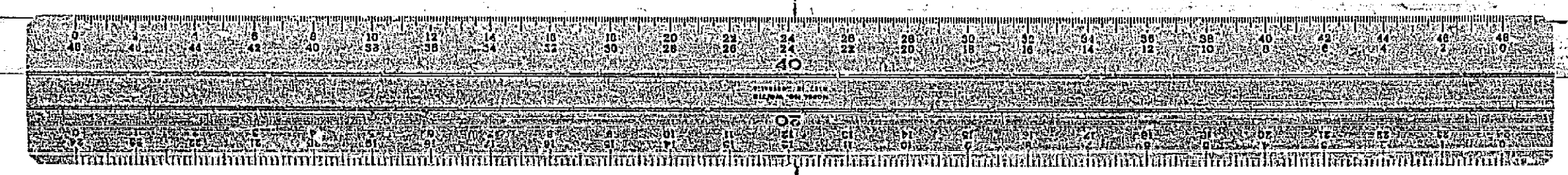
TYPICAL SECTION
Hor. 1" = 20'
Vert. 1" = 2'



NOTE: Improvements shown on this sheet are shown to establish grades only and are not to be constructed as a part of MONTCLAIR PARK UNIT #2

J.F. DAVIDSON - CIVIL ENGINEER	
RIVERSIDE, CALIFORNIA	
APPROVED BY: <i>[Signature]</i> DATE: 2-22-59	
CITY OF RIVERSIDE, CALIFORNIA	
DEPARTMENT OF PUBLIC WORKS	
DRAINAGE PLAN & PROFILE	
STREETER AVENUE	
MONTCLAIR PARK UNIT #2	
HORIZ. SCALE 1" = 40' VERT. SCALE 1" = 4'	
APPROVED BY	NO. R-128
Director of Public Works	
DATE	SHEET 2 OF 3

B.M. Chisbol 2 on curb
W. 5256 Capitano Way
Front of 44 41 2735
Elev. 701.92

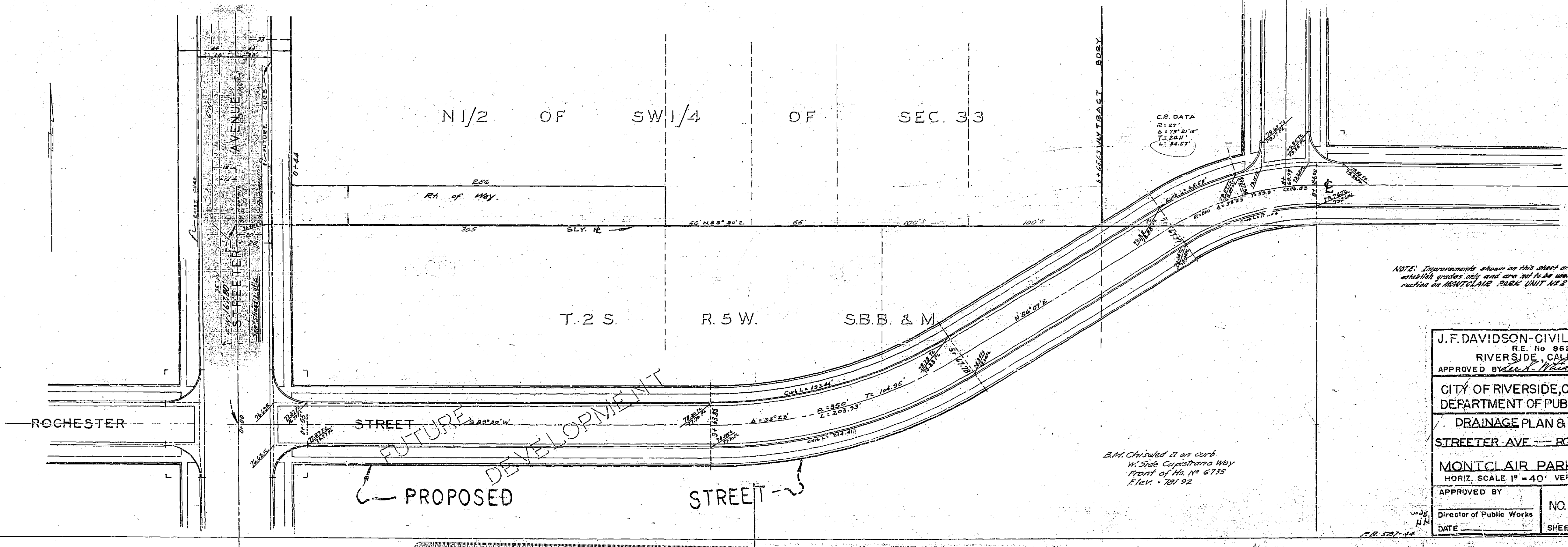
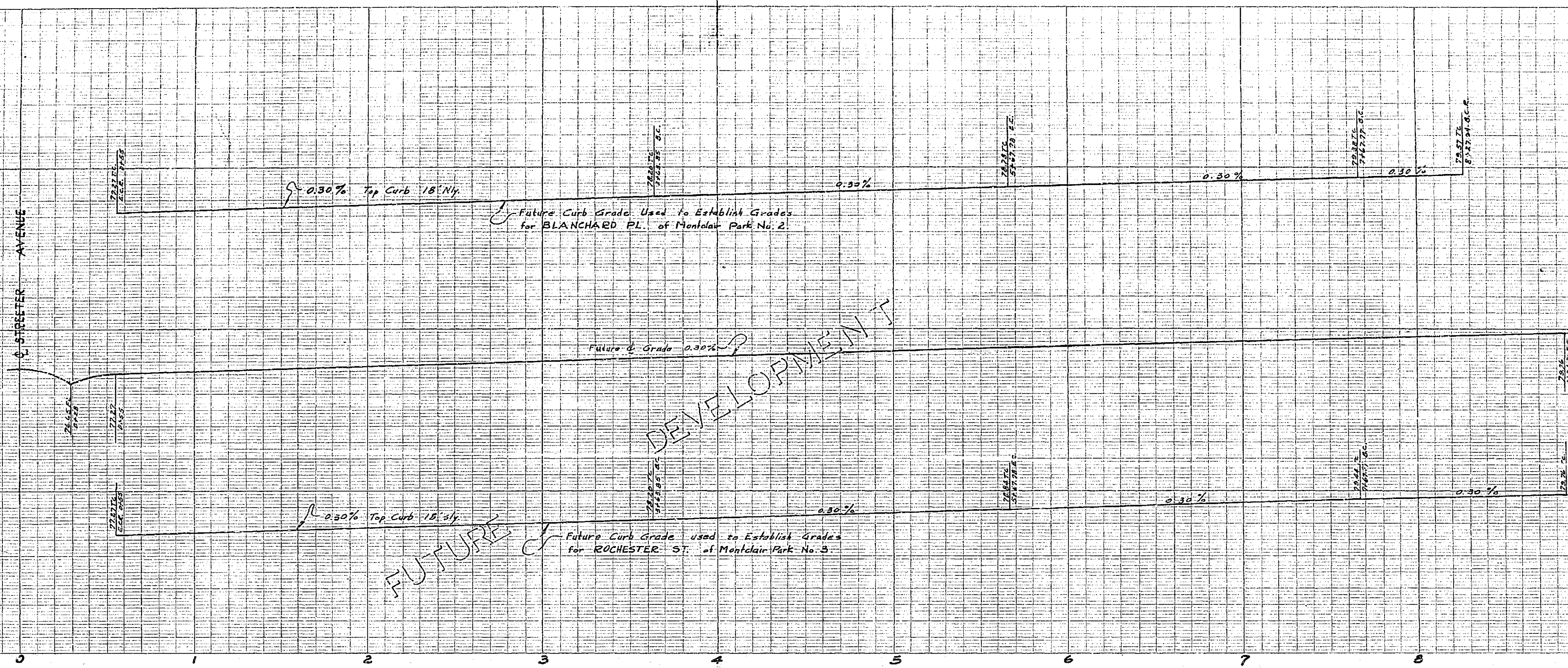


SCALE OF PLAN OF MONTECLAIR PARK UNIT NO. 2
1" = 40'

SCALE OF PROFILE OF MONTECLAIR PARK UNIT NO. 2
1" = 4'

SCALE OF PLAN OF MONTECLAIR PARK UNIT NO. 2
1" = 40'

HYDRAULIC DATA
Discharge Area = 24 Acres
Av. Slope = 0.2 %
Rainfall Rate = 1.25 in/hr.
Runoff Rate = 0.35 %
Concentration = 0.86 c.f.c.



NOTE: Elevation shown on this sheet are shown to establish grades only and are not to be used for construction on MONTECLAIR PARK UNIT NO. 2.

J.F. DAVIDSON - CIVIL ENGINEER	
R.E. No. 862	
RIVERSIDE, CALIFORNIA	
APPROVED BY: <i>[Signature]</i> DATE: 2-22-58	
CITY OF RIVERSIDE, CALIFORNIA	
DEPARTMENT OF PUBLIC WORKS	
DRAINAGE PLAN & PROFILE	
STREETER AVE - ROCHESTER ST	
MONTECLAIR PARK UNIT NO. 2	
HORIZ. SCALE 1" = 40' VERT. SCALE 1" = 4'	
APPROVED BY:	NO. 2-128
Director of Public Works	
DATE:	SHEET 2 OF 2

