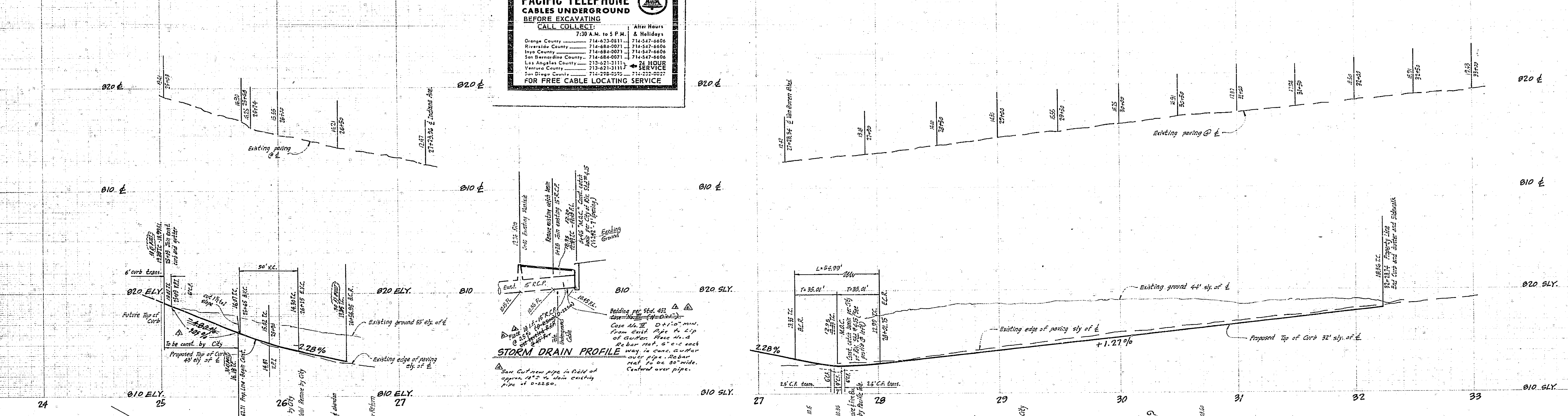


**-CAUTION-**  
**PACIFIC TELEPHONE**  
**CABLES UNDERGROUND**  
**BEFORE EXCAVATING**  
**CALL COLLECT:**

Orange County	714-233-0811	After Hours	7:30 A.M. to 5 P.M. & Holidays
Riverside County	714-947-6606	Orange County	714-233-0811
Inyo County	714-884-0071	Riverside County	714-947-6606
San Bernardino County	714-847-6606	Inyo County	714-884-0071
Los Angeles County	714-221-2111	San Bernardino County	714-847-6606
Ventura County	714-621-0111	Los Angeles County	714-221-2111
San Diego County	714-228-2555	Ventura County	714-621-0111
		San Diego County	714-228-2555

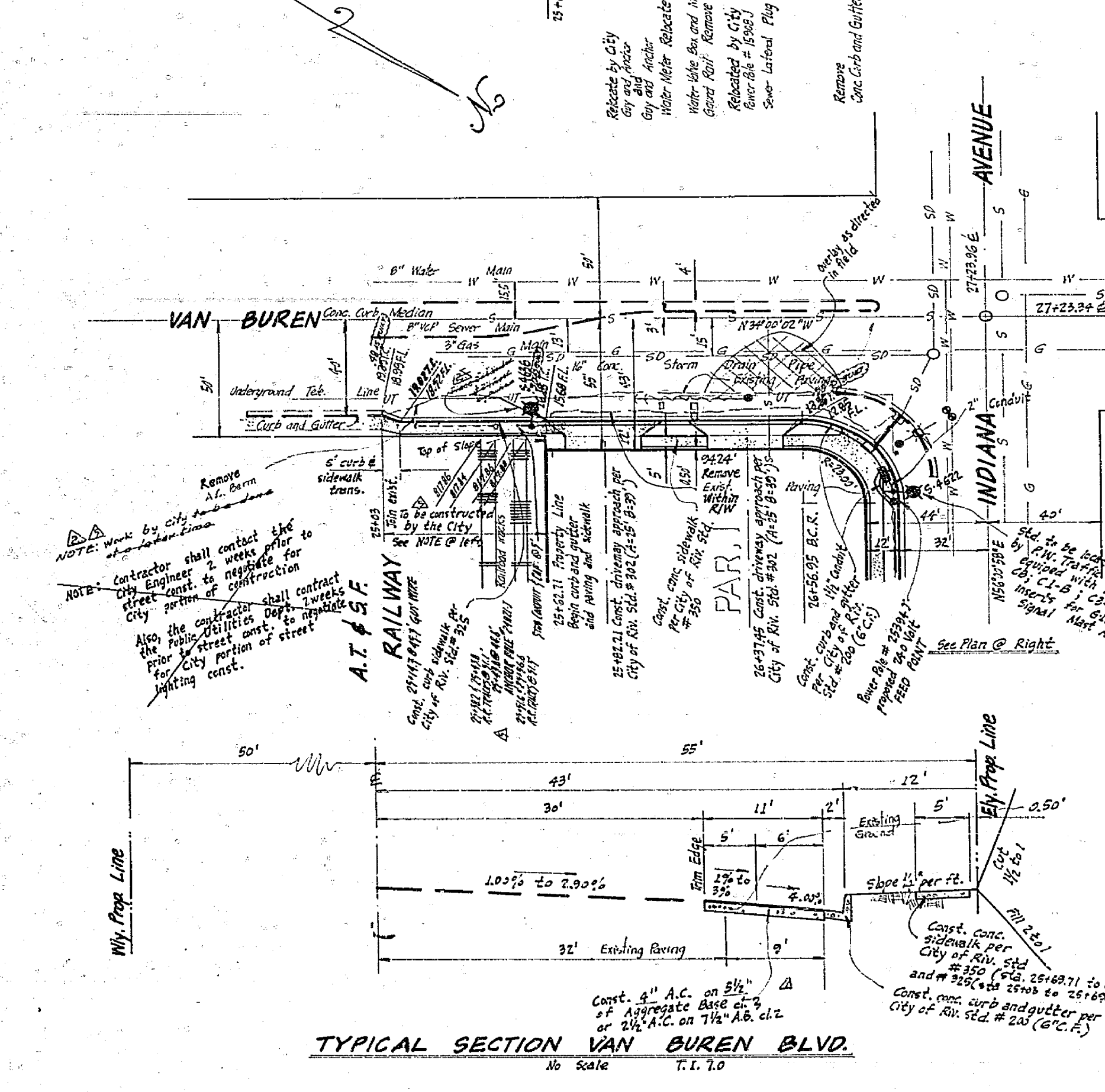
FOR FREE CABLE LOCATING SERVICE



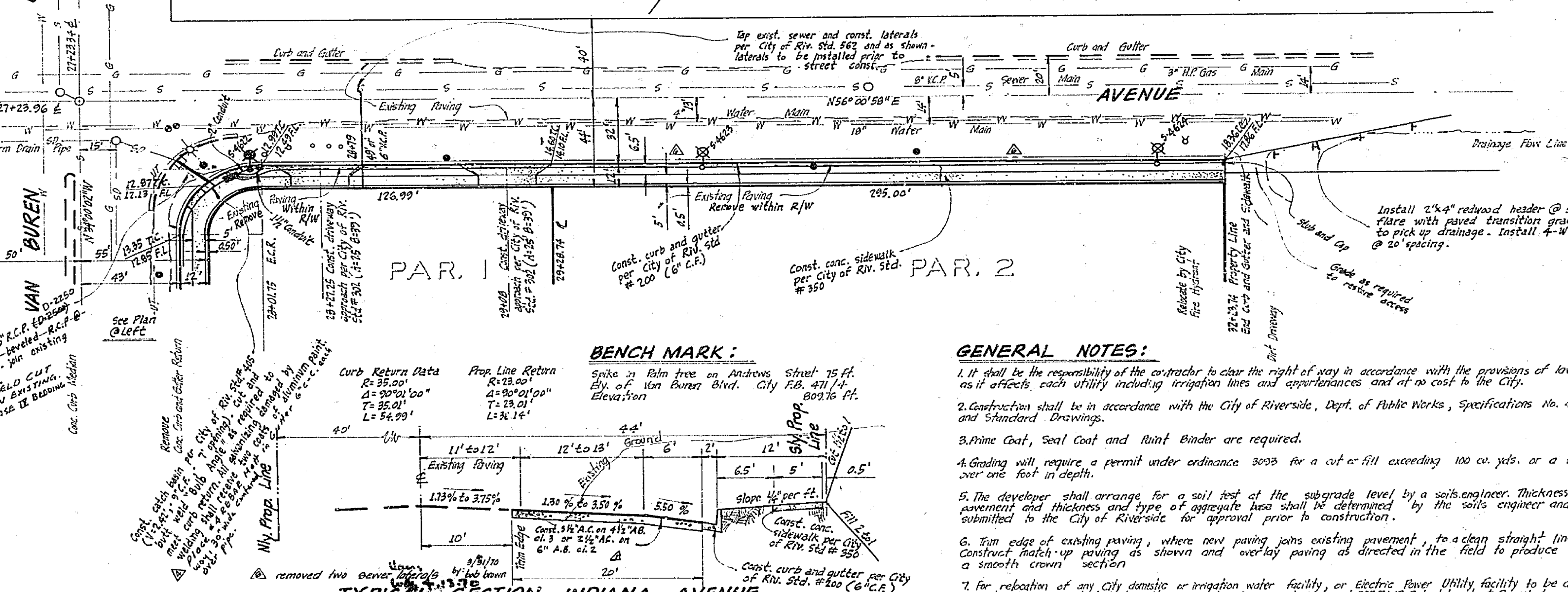
**STORM DRAIN PROFILE**  
 1. San Cut new pipe in field of approx. 10' to 12' within existing pipe of 24" dia.  
 2. Bedding per Std. 481.  
 3. Case 48.1E 20' x 10' min. from curb pipe to lip of gutter. Place sand bed bar mat, 2' x 2' each way in case gutter over pipe. Rubber seal to be 30" wide. Centered over pipe.

- STREET LIGHT LEGEND:**
- Indicates City of Riv. marquette light standard No. 6870 with 20000 L., 400 W., type III "Line Material" mercury vapor luminaire, Cat. No. LM 15A2 or app'd. equal.
  - Indicates No. 6870 with 20000 L., 400 W., type III "Line Material" mercury vapor luminaire, Cat. No. LM 15A2 or app'd. equal.
  - Indicates 1" rigid galv. steel conduit, except as noted.
  - Indicates City of Riv. marquette light standard No. 4505 with 10000 L., 250 W., type III "Line Material" mercury vapor luminaire, Cat. No. LM 15A2 or app'd. equal.

- STREET LIGHT NOTES:**
- All street light standards and pullboxes to be located in the field.
  - All street light standards shall be checked for clearance of driveways and placed 10' from end of curb returns.
  - See City of Riv. Drawing No. L1-1000 and L1-1001 for light standard details and Drawing No. L1-1003 for pullbox details.
  - All cable to be AWG No. 8 copper.
  - This is a 2 wire 240 volt multiple system.
  - All construction to comply with City of Riv. Street Light Specifications.
  - Inspection to be called for as outline in specifications.
  - Feed point to be confirmed at time of construction.
  - 300.00 connection and inspection fee to be paid: (date paid).
  - The City of Riverside Traffic Eng. Div. will pay \$100.00 toward the cost of this project to the developer upon completion of the work and receipt of a statement from the developer.
  - Elevation of street light standard tops, pullboxes and conduits must be done after installation of curbs and gutters, but before installation of sidewalks.
  - Backfill to be of type and compacted as specified by City of Riv. Public Works Dept.
  - Contractor to obtain a street opening permit from City of Riv. Public Works Dept. before doing city excavation in proposed dedicated street right of way.



**TYPICAL SECTION VAN BUREN BLVD.**  
 No Scale T.I. 2.0



**TYPICAL SECTION INDIANA AVENUE**  
 No Scale T.I. 6.0

- GENERAL NOTES:**
- It shall be the responsibility of the contractor to clear the right of way in accordance with the provisions of law as it affects each utility including irrigation lines and encroachments and at no cost to the City.
  - Construction shall be in accordance with the City of Riverside, Dept. of Public Works, Specifications No. 161 and Standard Drawings.
  - Prime Coat, Seal Coat and Rubb. Binder are required.
  - Grading will require a permit under ordinance 3098 for a cut or fill exceeding 100 cu. yds. or a fill over one foot in depth.
  - The developer shall arrange for a soil test of the subgrade level by a soils engineer. Thickness of pavement and thickness and type of aggregate base shall be determined by the soils engineer and submitted to the City of Riverside for approval prior to construction.
  - Fin edge of existing paving, where new paving joins existing pavement, to a clean straight line. Construct match-up paving as shown and overlay paving as directed in the field to produce a smooth crown section.
  - For relocation of any City damage or irrigation water facility, or Electric Power Utility facility to be done by City Forces Contractor. Plans, Water Contract # 181-7445 Schedule about 2 week to process a work order, before relocation work begins.

**J. F. DAVIDSON ASSOCIATES**  
 Civil Engineers - Surveyors - Planners  
 Riverside, California

Approved by: *George E. Davidson* Date: 2/1/68  
 R.C.E. No. 10689  
 M.O. 1760 PAR: Phil Fouke, Jr. RA: 995/30

NO.	REVISIONS	DATE
1	Added A.C. and A.B. requirements.	1/15/68
2	Remove city public from initial work.	2/1/68
3	Remove D-land and "Ad Value" from initial work.	2/1/68
4	Remove construction notes from initial work.	2/1/68
5	Remove 12' x 12' pullbox from initial work.	2/1/68
6	Remove 12' x 12' pullbox from initial work.	2/1/68
7	Remove 12' x 12' pullbox from initial work.	2/1/68
8	Remove 12' x 12' pullbox from initial work.	2/1/68
9	Remove 12' x 12' pullbox from initial work.	2/1/68
10	Remove 12' x 12' pullbox from initial work.	2/1/68
11	Remove 12' x 12' pullbox from initial work.	2/1/68
12	Remove 12' x 12' pullbox from initial work.	2/1/68
13	Remove 12' x 12' pullbox from initial work.	2/1/68
14	Remove 12' x 12' pullbox from initial work.	2/1/68
15	Remove 12' x 12' pullbox from initial work.	2/1/68
16	Remove 12' x 12' pullbox from initial work.	2/1/68
17	Remove 12' x 12' pullbox from initial work.	2/1/68
18	Remove 12' x 12' pullbox from initial work.	2/1/68
19	Remove 12' x 12' pullbox from initial work.	2/1/68
20	Remove 12' x 12' pullbox from initial work.	2/1/68
21	Remove 12' x 12' pullbox from initial work.	2/1/68
22	Remove 12' x 12' pullbox from initial work.	2/1/68
23	Remove 12' x 12' pullbox from initial work.	2/1/68
24	Remove 12' x 12' pullbox from initial work.	2/1/68
25	Remove 12' x 12' pullbox from initial work.	2/1/68
26	Remove 12' x 12' pullbox from initial work.	2/1/68
27	Remove 12' x 12' pullbox from initial work.	2/1/68
28	Remove 12' x 12' pullbox from initial work.	2/1/68
29	Remove 12' x 12' pullbox from initial work.	2/1/68
30	Remove 12' x 12' pullbox from initial work.	2/1/68
31	Remove 12' x 12' pullbox from initial work.	2/1/68
32	Remove 12' x 12' pullbox from initial work.	2/1/68
33	Remove 12' x 12' pullbox from initial work.	2/1/68
34	Remove 12' x 12' pullbox from initial work.	2/1/68
35	Remove 12' x 12' pullbox from initial work.	2/1/68
36	Remove 12' x 12' pullbox from initial work.	2/1/68
37	Remove 12' x 12' pullbox from initial work.	2/1/68
38	Remove 12' x 12' pullbox from initial work.	2/1/68
39	Remove 12' x 12' pullbox from initial work.	2/1/68
40	Remove 12' x 12' pullbox from initial work.	2/1/68
41	Remove 12' x 12' pullbox from initial work.	2/1/68
42	Remove 12' x 12' pullbox from initial work.	2/1/68
43	Remove 12' x 12' pullbox from initial work.	2/1/68
44	Remove 12' x 12' pullbox from initial work.	2/1/68
45	Remove 12' x 12' pullbox from initial work.	2/1/68
46	Remove 12' x 12' pullbox from initial work.	2/1/68
47	Remove 12' x 12' pullbox from initial work.	2/1/68
48	Remove 12' x 12' pullbox from initial work.	2/1/68
49	Remove 12' x 12' pullbox from initial work.	2/1/68
50	Remove 12' x 12' pullbox from initial work.	2/1/68
51	Remove 12' x 12' pullbox from initial work.	2/1/68
52	Remove 12' x 12' pullbox from initial work.	2/1/68
53	Remove 12' x 12' pullbox from initial work.	2/1/68
54	Remove 12' x 12' pullbox from initial work.	2/1/68
55	Remove 12' x 12' pullbox from initial work.	2/1/68
56	Remove 12' x 12' pullbox from initial work.	2/1/68
57	Remove 12' x 12' pullbox from initial work.	2/1/68
58	Remove 12' x 12' pullbox from initial work.	2/1/68
59	Remove 12' x 12' pullbox from initial work.	2/1/68
60	Remove 12' x 12' pullbox from initial work.	2/1/68
61	Remove 12' x 12' pullbox from initial work.	2/1/68
62	Remove 12' x 12' pullbox from initial work.	2/1/68
63	Remove 12' x 12' pullbox from initial work.	2/1/68
64	Remove 12' x 12' pullbox from initial work.	2/1/68
65	Remove 12' x 12' pullbox from initial work.	2/1/68
66	Remove 12' x 12' pullbox from initial work.	2/1/68
67	Remove 12' x 12' pullbox from initial work.	2/1/68
68	Remove 12' x 12' pullbox from initial work.	2/1/68
69	Remove 12' x 12' pullbox from initial work.	2/1/68
70	Remove 12' x 12' pullbox from initial work.	2/1/68
71	Remove 12' x 12' pullbox from initial work.	2/1/68
72	Remove 12' x 12' pullbox from initial work.	2/1/68
73	Remove 12' x 12' pullbox from initial work.	2/1/68
74	Remove 12' x 12' pullbox from initial work.	2/1/68
75	Remove 12' x 12' pullbox from initial work.	2/1/68
76	Remove 12' x 12' pullbox from initial work.	2/1/68
77	Remove 12' x 12' pullbox from initial work.	2/1/68
78	Remove 12' x 12' pullbox from initial work.	2/1/68
79	Remove 12' x 12' pullbox from initial work.	2/1/68
80	Remove 12' x 12' pullbox from initial work.	2/1/68
81	Remove 12' x 12' pullbox from initial work.	2/1/68
82	Remove 12' x 12' pullbox from initial work.	2/1/68
83	Remove 12' x 12' pullbox from initial work.	2/1/68
84	Remove 12' x 12' pullbox from initial work.	2/1/68
85	Remove 12' x 12' pullbox from initial work.	2/1/68
86	Remove 12' x 12' pullbox from initial work.	2/1/68
87	Remove 12' x 12' pullbox from initial work.	2/1/68
88	Remove 12' x 12' pullbox from initial work.	2/1/68
89	Remove 12' x 12' pullbox from initial work.	2/1/68
90	Remove 12' x 12' pullbox from initial work.	2/1/68
91	Remove 12' x 12' pullbox from initial work.	2/1/68
92	Remove 12' x 12' pullbox from initial work.	2/1/68
93	Remove 12' x 12' pullbox from initial work.	2/1/68
94	Remove 12' x 12' pullbox from initial work.	2/1/68
95	Remove 12' x 12' pullbox from initial work.	2/1/68
96	Remove 12' x 12' pullbox from initial work.	2/1/68
97	Remove 12' x 12' pullbox from initial work.	2/1/68
98	Remove 12' x 12' pullbox from initial work.	2/1/68
99	Remove 12' x 12' pullbox from initial work.	2/1/68
100	Remove 12' x 12' pullbox from initial work.	2/1/68

**CITY OF RIVERSIDE, CALIFORNIA**  
 DEPARTMENT OF PUBLIC WORKS

APPROVED BY: *[Signature]* DATE: 5-15-68  
 OFFICE ENGINEER  
 TRAFFIC DIVISION  
 ASSISTANT CITY ENGINEER

**Street Plan and Profile**  
**INDIANA AVE. - VAN BUREN BLVD.**  
 (50' East of E. Van Buren Blvd.) (650' South of E. Indiana Ave.) EAST SIDE

HORIZ. SCALE: 1" = 40' VERT. SCALE: 1" = 4'

PROJECT NO. L5-13204  
 SHEET 1 OF 1  
 FILE NO. 8350