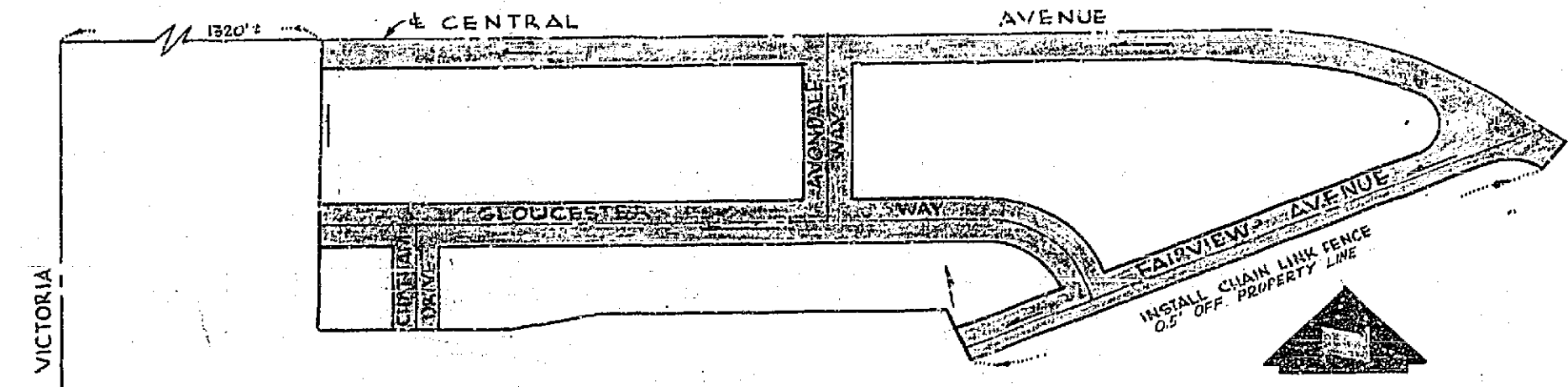


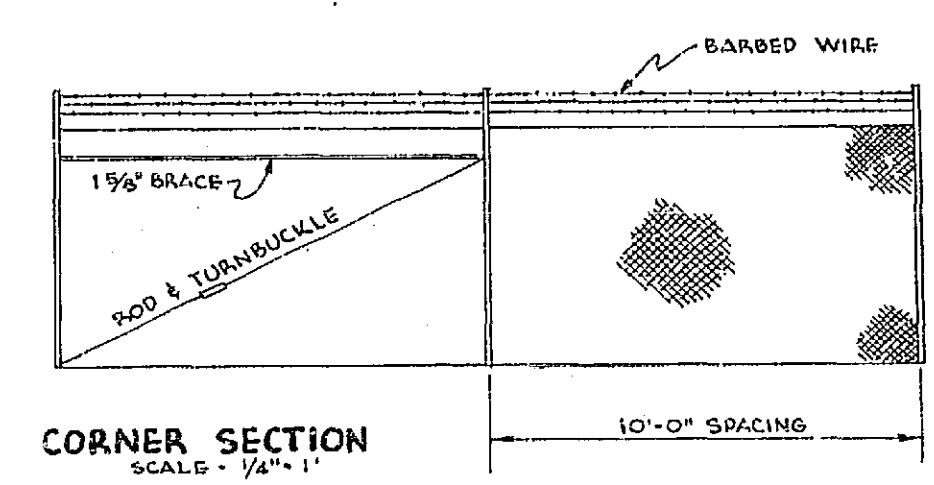
PROPERTY OF
CITY OF RIVERSIDE
DEPT. OF PUBLIC WORKS
ENGINEERING DIVISION



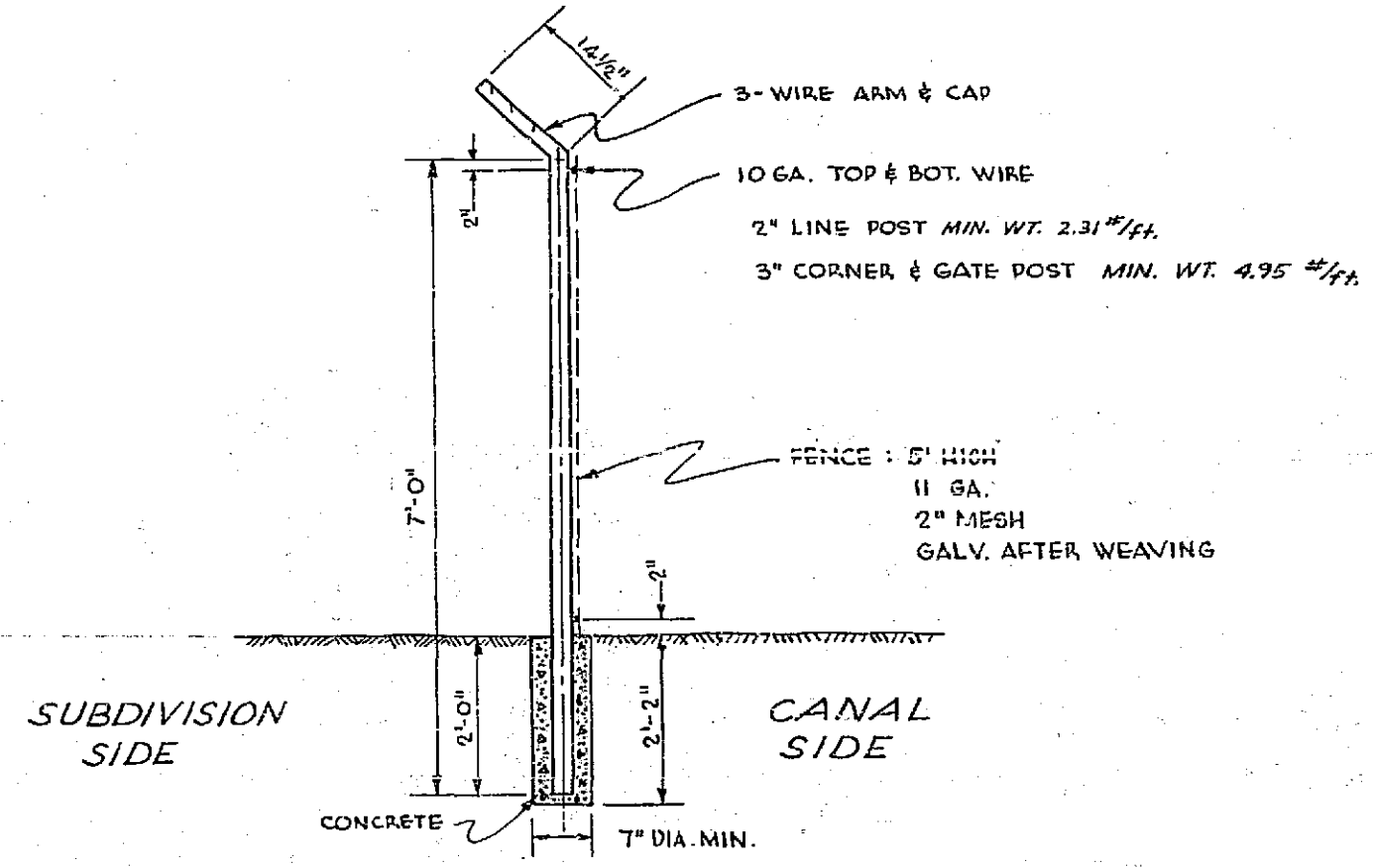
YORKSHIRE HEIGHTS No. 3
LOCATION MAP
SCALE: 1" = 200'

ESTIMATED QUANTITIES	
ITEM	QUANTITY
TREE REMOVAL	970 EA.
STREET EXC.	3014 C.Y.
LOT EXC.	7,229 C.Y.
FILL (STREETS & LOTS)	10,304 C.Y.
BORROW	3,769 C.Y.
2 1/2" P.M.S.	78,700 S.F.
CURB & GUTTER	5,940 L.F.
SIDEWALK	25,450 S.F.
P.C.C. CROSS-GUTTERS	1,106 S.F.
6' CHAIN LINK FENCE	832 L.F.
STREET SIGNS	2 EA.
DEAD END SIGNS	3 EA.
CATCH BASINS	4 EA.
PIPE - 22" x 36" CMP	246 L.F.
OUTLET STRUCTURE	2 EA.
JUNCTION STRUCTURE	1 EA.
15" PLAIN CONC. PIPE	152 L.F.
15" R.C.P.	37 L.F.

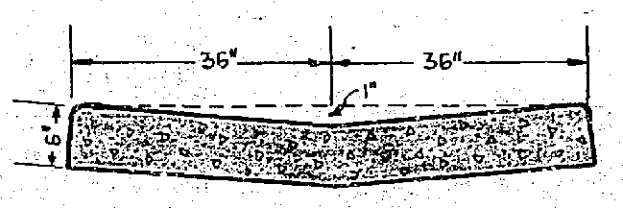
NOTE: THE ABOVE ARE ESTIMATED QUANTITIES ONLY. THE CONTRACTOR WILL NOTIFY THE ENGINEER OF ANY DEVIATION IN QUANTITIES FROM THE ABOVE. PAY QUANTITIES WILL BE DETERMINED BY FIELD CHECK ONLY.



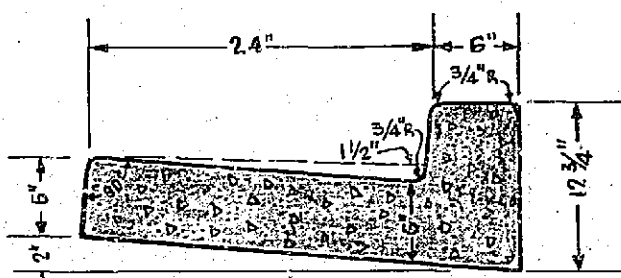
CORNER SECTION
SCALE: 1/4" = 1'



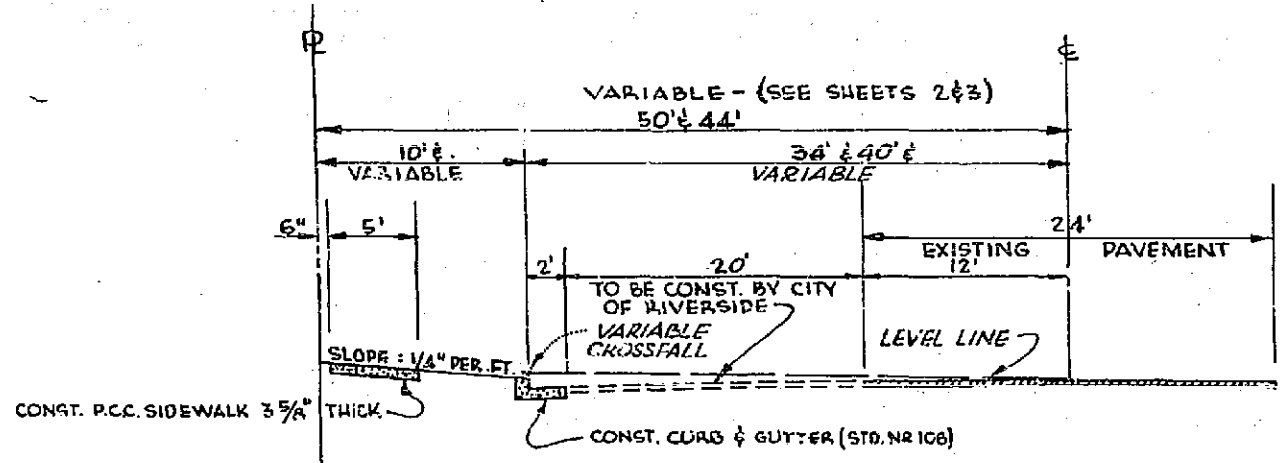
CHAIN LINK FENCE
SCALE: 1/2" = 1'



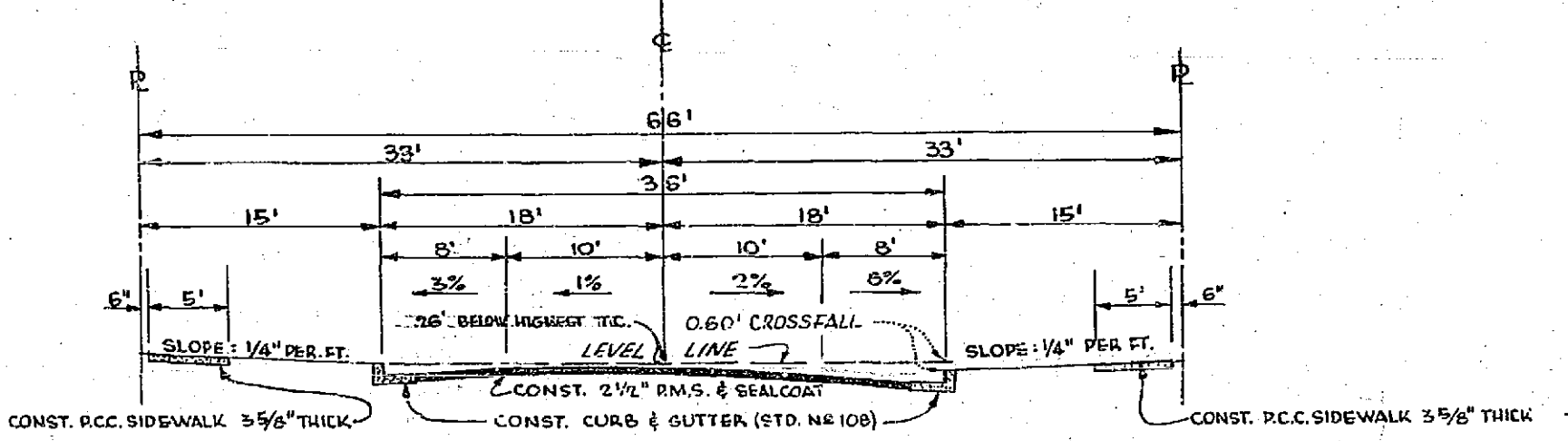
DETAIL OF DOUBLE GUTTER
SCALE: 3/4" = 1'



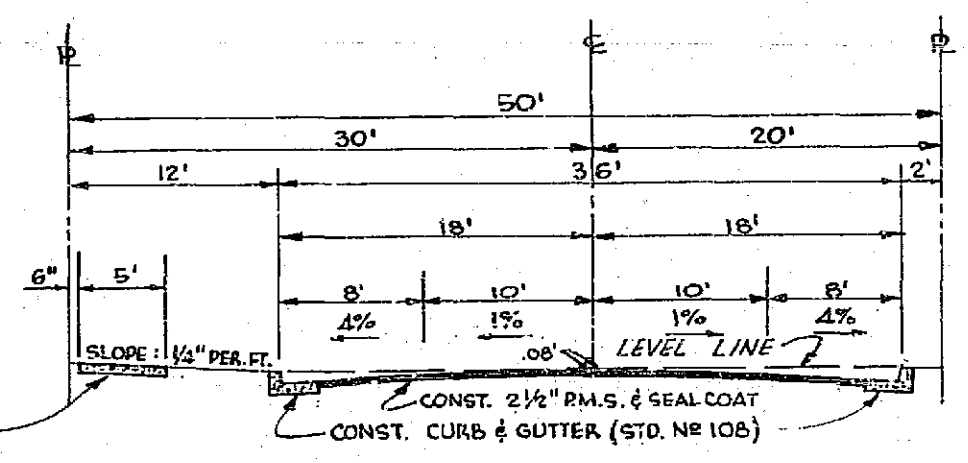
DETAIL ON COMBINATION
CURB AND GUTTER (STD. NR 108)
(OPTIONAL CONSTRUCTION - MONOLITHIC)
SCALE: 1" = 1'



TYPICAL SECTION OF CENTRAL AVENUE
SCALE: 1" = 10'



TYPICAL SECTION OF GLOUCESTER WAY,
AVONDALE WAY, AND CHATHAM DRIVE.
SCALE: 1" = 10'



TYPICAL SECTION OF FAIRVIEW AVENUE
SCALE: 1" = 10'

BENCH MARK
TOP OF 24" I.D. (CAPPED) AT INT.
VICTORIA & CENTRAL PER CITY FB.
493/76. ELEV. 947.508

RAYMOND L. QUIGLEY - REGISTERED ENGINEER - 7191
SOUTH BAY ENGINEERING CO. - SANTA ANA, CALIFORNIA
APPROVED BY: *Raymond L. Quigley* DATE: 11/20/56

CITY OF RIVERSIDE, CALIFORNIA
DEPARTMENT OF PUBLIC WORKS

**STREET PLAN & PROFILE OF
YORKSHIRE HEIGHTS - UNIT 3**

HORIZONTAL SCALE: 1" = 40' VERTICAL SCALE: 1" = 4'

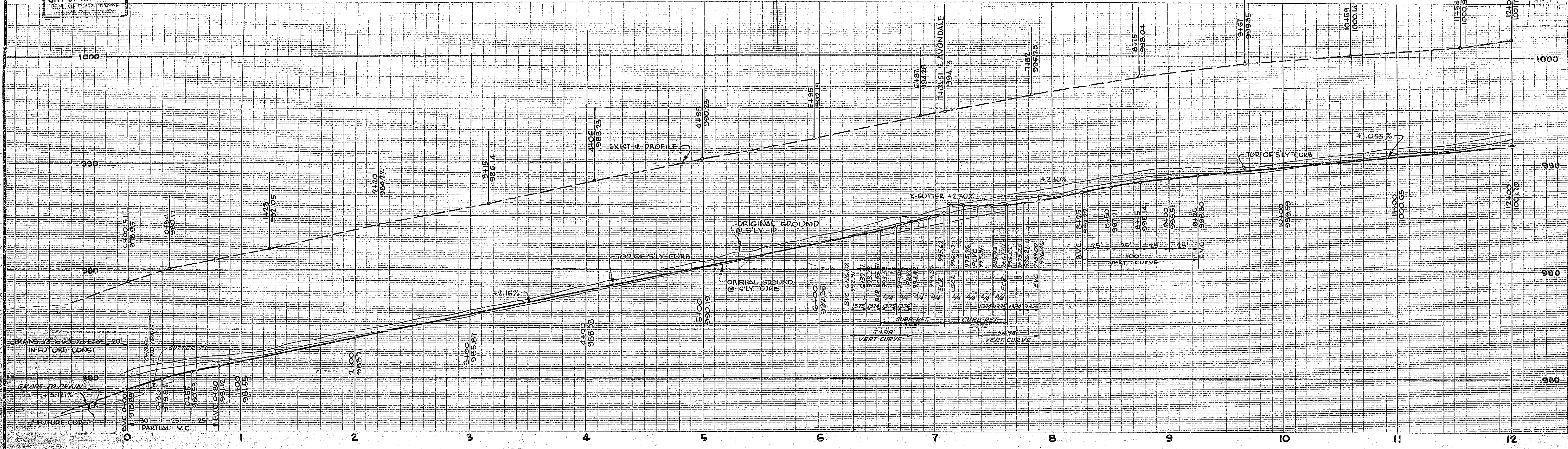
APPROVED BY: *R. M. ...* NO. R-129
DIRECTOR OF PUBLIC WORKS SHEET 1 OF 6 SHEETS
DATE: 11/20/56

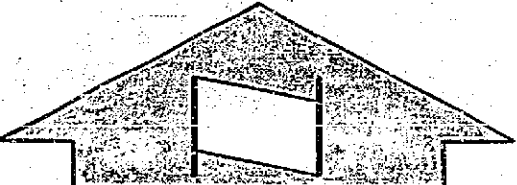
PROPERTY OF
CITY OF RIVERSIDE
DEPT. OF PUBLIC WORKS
ENGINEERING DIVISION

PROPERTY OF
CITY OF RIVERSIDE
ENGINEERING DIVISION

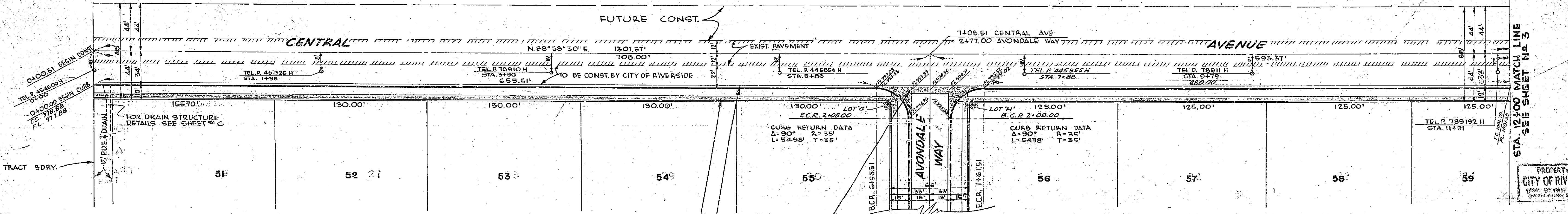
UNLESS OTHERWISE SPECIFIED
ALL DIMENSIONS IN FEET & INCHES
UNLESS OTHERWISE SPECIFIED

UNLESS OTHERWISE SPECIFIED
ALL DIMENSIONS IN FEET & INCHES
UNLESS OTHERWISE SPECIFIED



CENTRAL  AVENUE

NOTE:
UTILITY POLES TO BE RELOCATED
BY UTILITY COMPANY.



PROPERTY OF
CITY OF RIVERSIDE
ENGINEERING DIVISION

PROPERTY OF
CITY OF RIVERSIDE
ENGINEERING DIVISION

CONST. 5' P.C.C. SIDEWALK
CONST. STD. CURB & GUTTER
CONST. STD. 6" X-GUTTER

SEE SHEET No 3

BENCH MARK
TOP OF 2" I.B. (CAPPED) AT INT.
VICTORIA & CENTRAL PER CITY EB.
493/76. ELEV. 947.506

RAYMOND L. QUIGLEY • REGISTERED ENGINEER-7191
SOUTH BAY ENGINEERING CO. • SANTA ANA, CALIFORNIA
APPROVED BY: *Raymond L. Quigley* DATE: 11/20/56

CITY OF RIVERSIDE, CALIFORNIA
DEPARTMENT OF PUBLIC WORKS

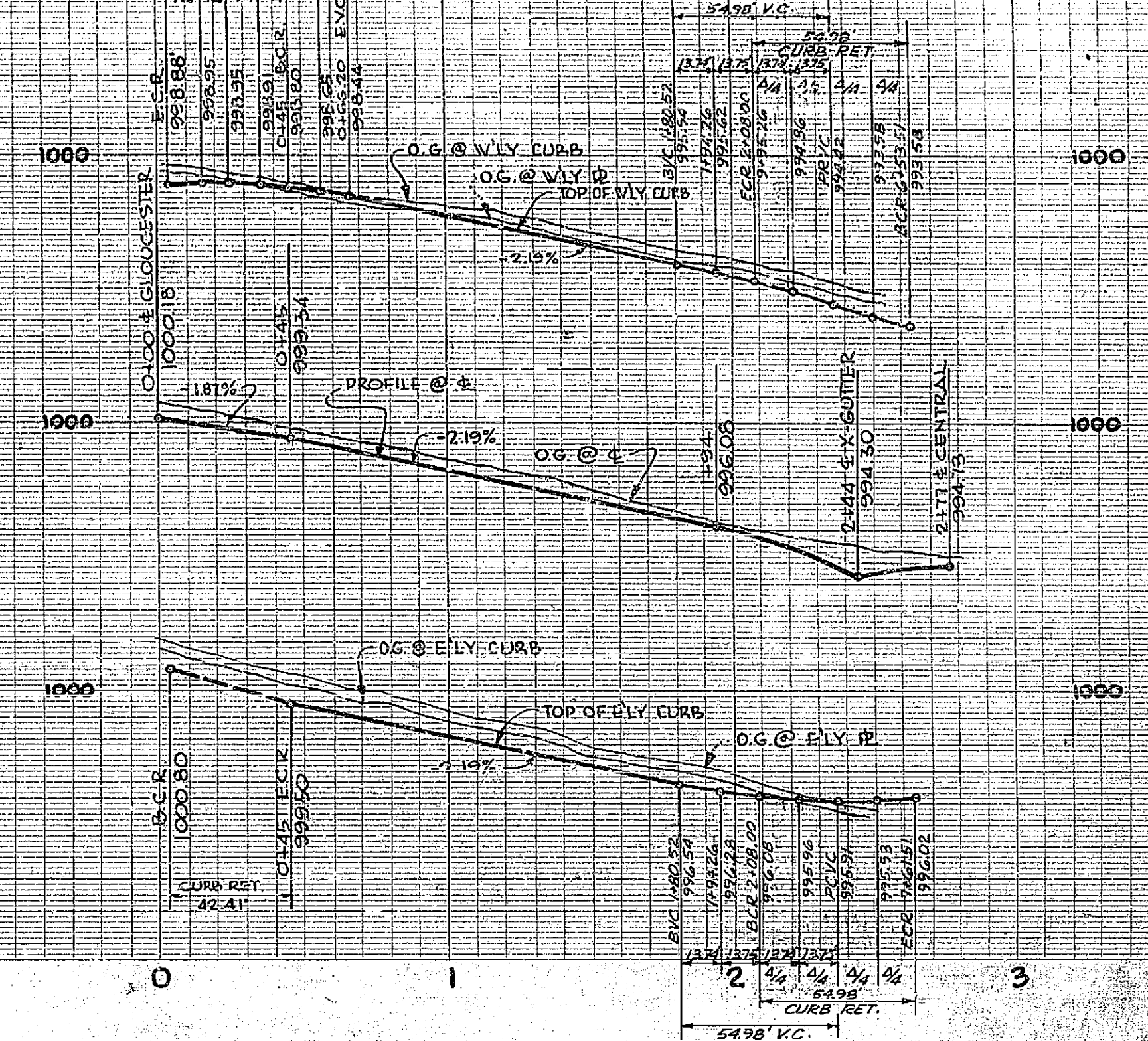
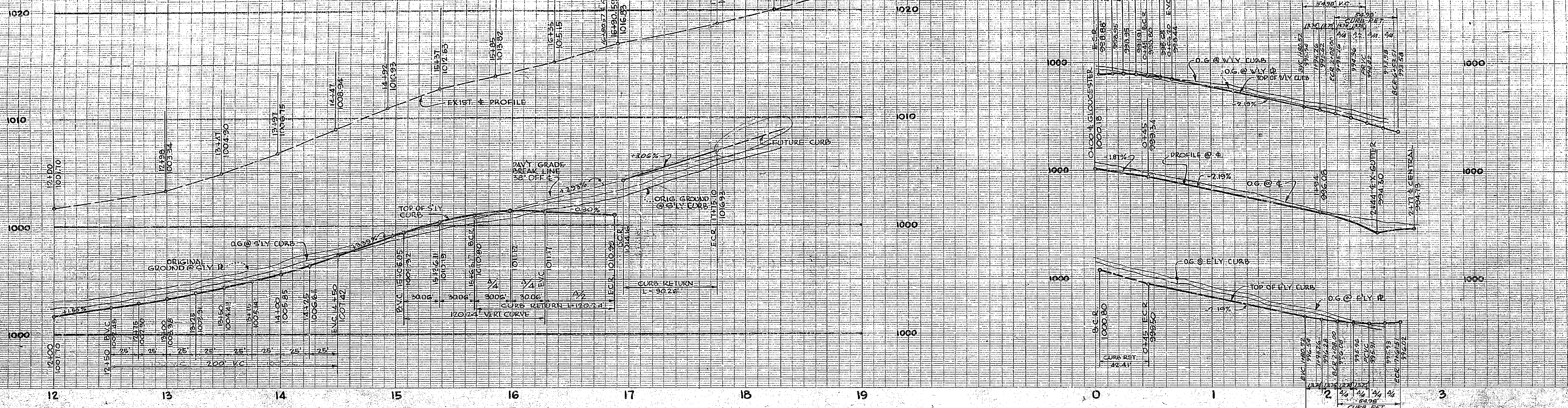
STREET PLAN & PROFILE ...
... CENTRAL AVENUE ...

YORKSHIRE HEIGHTS-UNIT 3
HORIZONTAL SCALE: 1"=40' VERTICAL SCALE: 1"=4'
APPROVED BY: *Raymond L. Quigley* NR. B-129
DIRECTOR OF PUBLIC WORKS SHEET 2 OF 6 SHEETS
DATE: 6-17-57

PROPERTY OF
CITY OF RIVERSIDE
DEPT. OF PUBLIC WORKS
ENGINEERING DIVISION

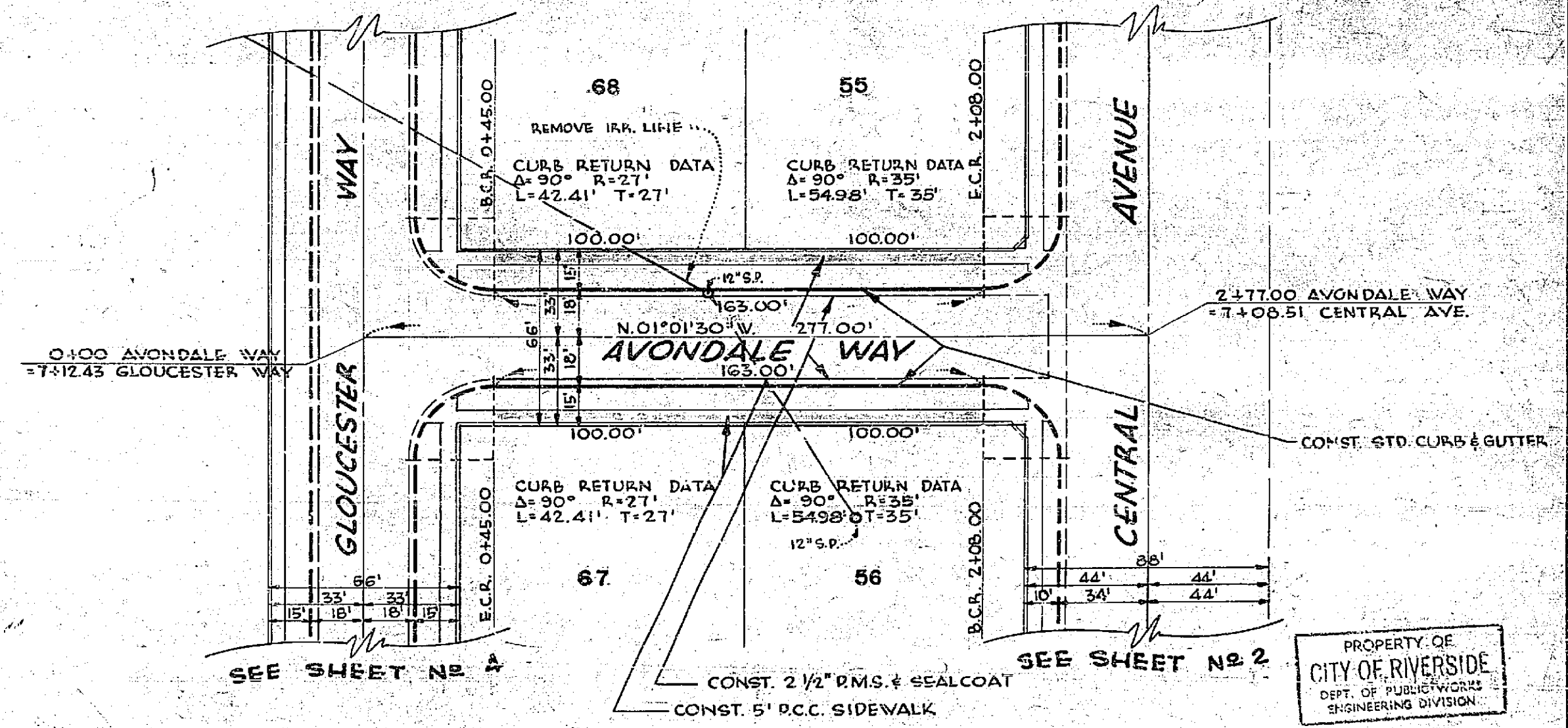
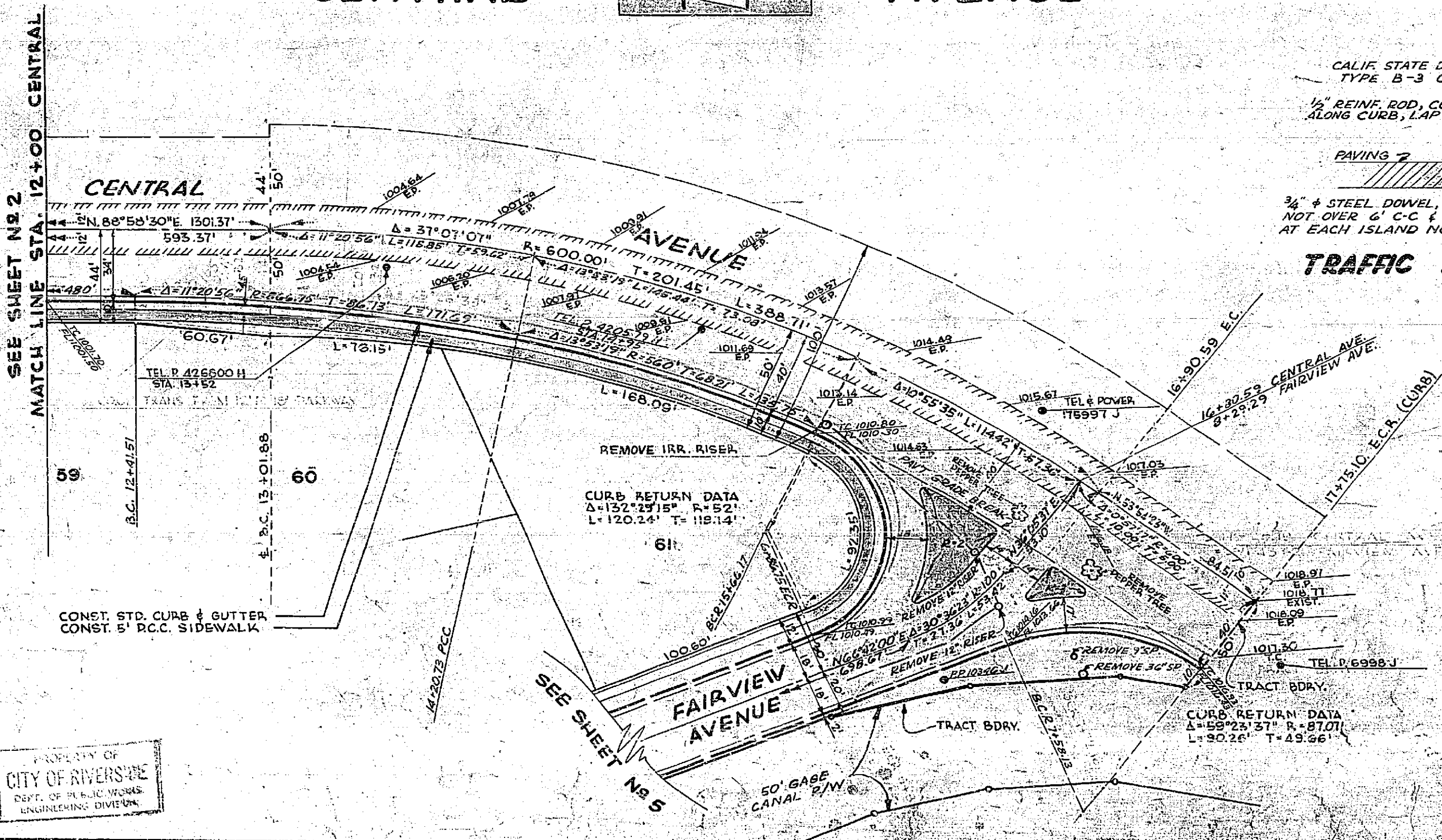
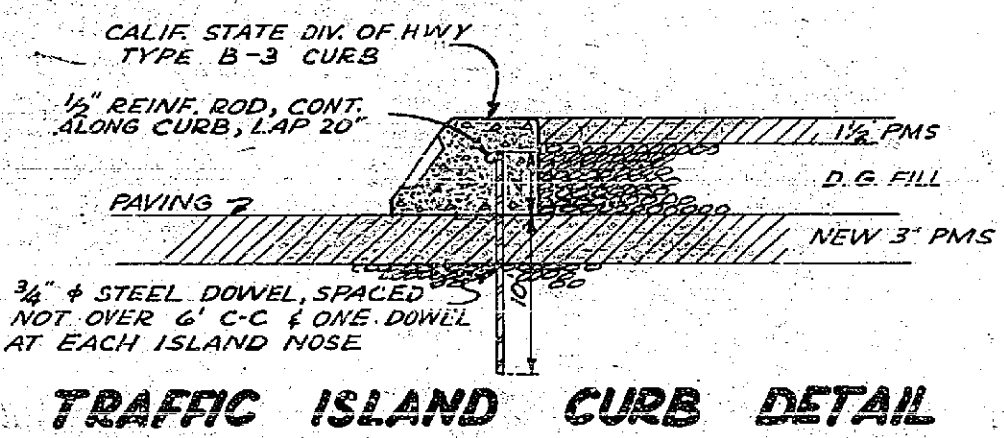
SCALE: HORIZONTAL 1" = 40'
VERTICAL 1" = 5'

PROPERTY OF
CITY OF RIVERSIDE
DEPT. OF PUBLIC WORKS
ENGINEERING DIVISION



CENTRAL AVENUE

NOTE:
UTILITY POLES TO BE RELOCATED
BY UTILITY COMPANY.
TREES TO BE REMOVED BY SUBDIVIDER.



AVONDALE WAY

BENCH MARK
TOP OF 2" LB. COPPER AT INT.
VICTORIA & CENTRAL PER CITY P.B.
493/76 ELEV. 947.506

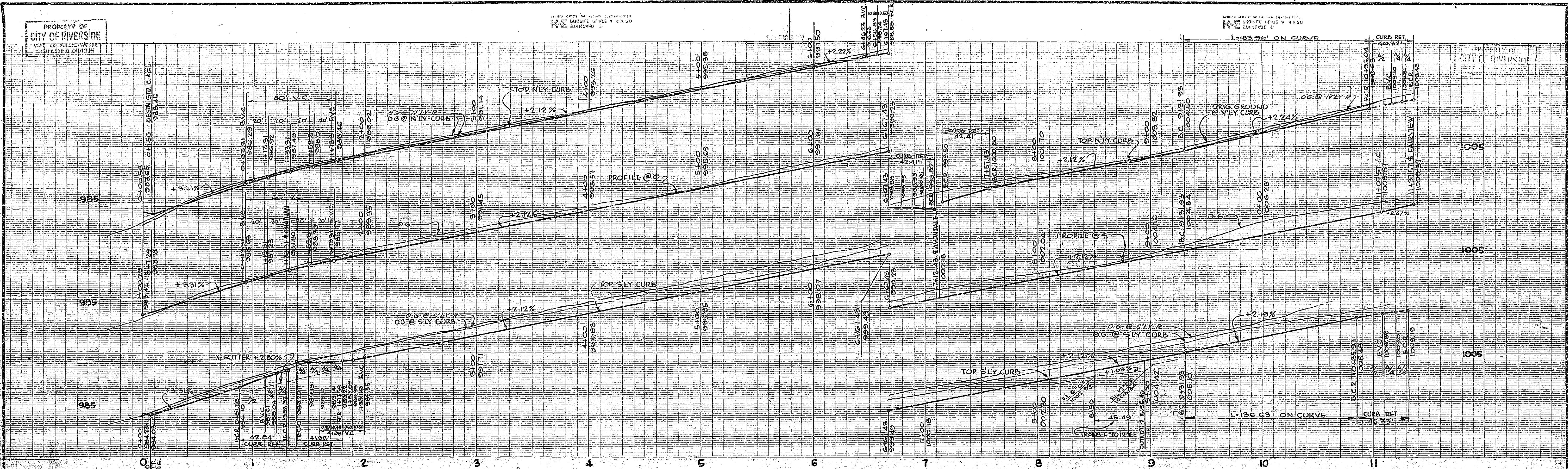
RAYMOND I. QUIGLEY • REGISTERED ENGINEER-7191
SOUTH BAY ENGINEERING CO. • SANTA ANA, CALIFORNIA
APPROVED BY: *Raymond I. Quigley* DATE: 11/20/56
CITY OF RIVERSIDE, CALIFORNIA
DEPARTMENT OF PUBLIC WORKS
STREET PLAN & PROFILE ...
... CENTRAL AVENUE &
... AVONDALE WAY ...
YORKSHIRE HEIGHTS-UNIT 3
HORIZONTAL SCALE 1" = 40' VERTICAL SCALE 1" = 5'
APPROVED BY: *[Signature]* NO. R-129
DIRECTOR OF PUBLIC WORKS SHEET 3 OF 6 SHEETS
DATE: 6-17-57

PROPERTY OF
CITY OF RIVERSIDE
DEPT. OF PUBLIC WORKS
ENGINEERING DIVISION

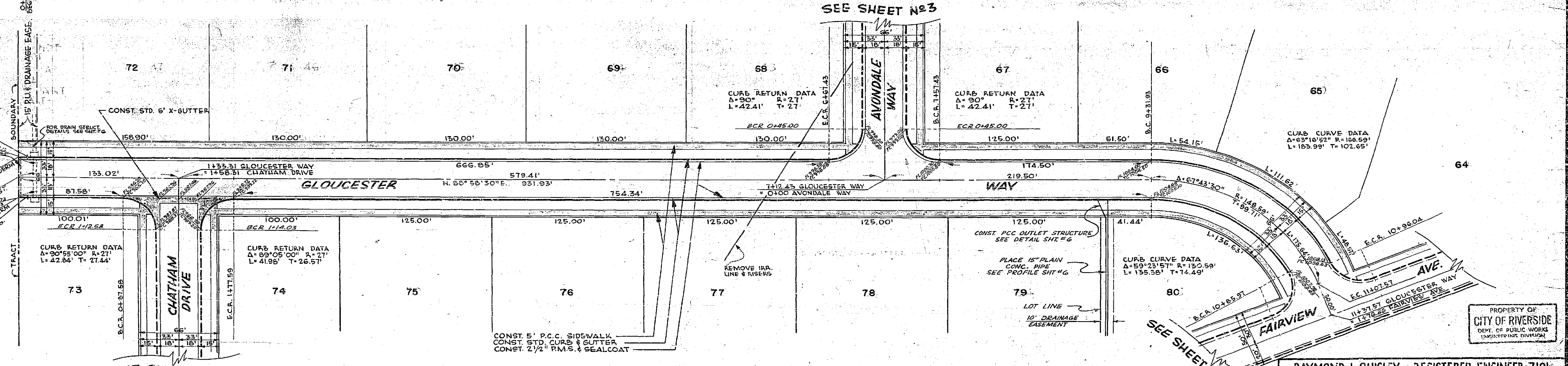
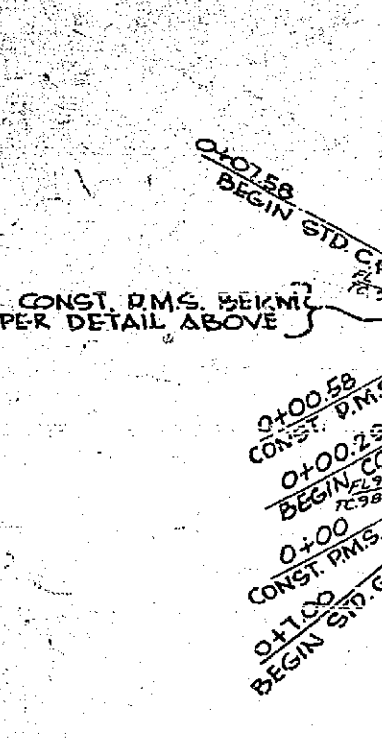
AS SHOWN BY RECORD SURVEY
SUBJECT: LOT 1 & 2
DIVISION

AS SHOWN BY RECORD SURVEY
SUBJECT: LOT 1 & 2
DIVISION

PROPERTY OF
CITY OF RIVERSIDE
DEPT. OF PUBLIC WORKS
ENGINEERING DIVISION



DETAIL
R.M.S. BERM

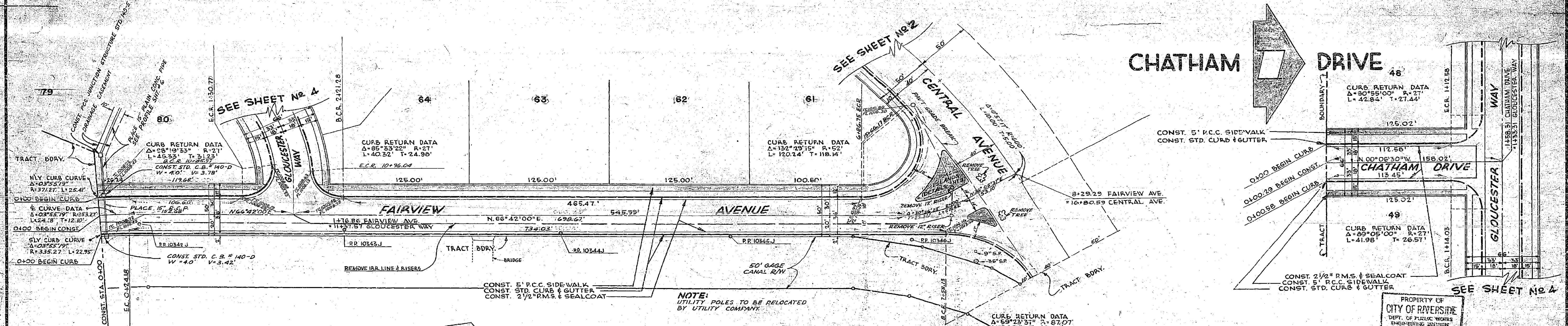
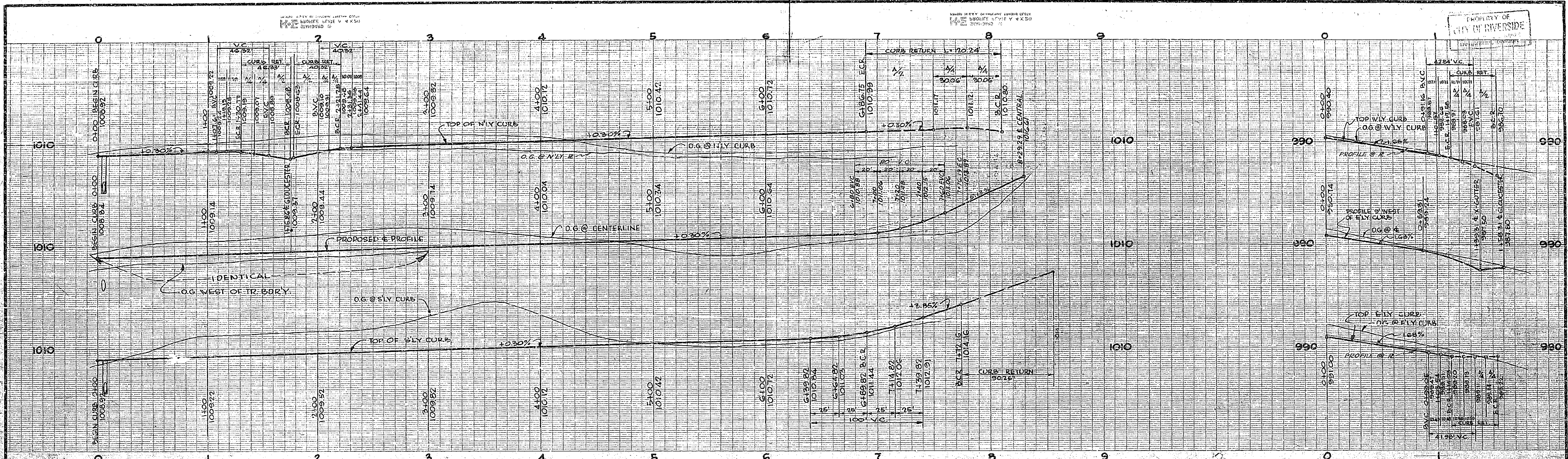


GLOUCESTER WAY

PROPERTY OF
CITY OF RIVERSIDE
DEPT. OF PUBLIC WORKS
ENGINEERING DIVISION

BENCH MARK
TOP OF 2" I.P. (CAPPED) AT 4 INT.
VICTORIA & CENTRAL PER CITY F.B.
493.76' ELEV. 947.50'

RAYMOND L. QUIGLEY - REGISTERED ENGINEER-7191
SOUTH BAY ENGINEERING CO. - SANTA ANA, CALIFORNIA
APPROVED BY: *Raymond L. Quigley* DATE: 11/20/54
CITY OF RIVERSIDE, CALIFORNIA
DEPARTMENT OF PUBLIC WORKS
STREET PLAN & PROFILE ...
... GLOUCESTER WAY ...
YORKSHIRE HEIGHTS-UNIT 3
HORIZONTAL SCALE: 1"=40' VERTICAL SCALE: 1"=4'
APPROVED BY: *[Signature]* NO. R-129
DIRECTION OF TRAFFIC WORKS SHEET 4 OF 6 SHEETS
DATE: 5-17-57



FAIRVIEW AVENUE

PROPERTY OF
CITY OF RIVERSIDE
DEPT. OF PUBLIC WORKS
ENGINEERING DIVISION

BENCH MARK
TOP OF 2' I.R. (CAPPED) AT INT.
VICTORIA & CENTRAL PER CITY E.B.
493.76' ELEV. 947.508

PROPERTY OF
CITY OF RIVERSIDE
DEPT. OF PUBLIC WORKS
ENGINEERING DIVISION

RAYMOND L. QUIGLEY - REGISTERED ENGINEER-7191
SOUTH BAY ENGINEERING CO. - SANTA ANA, CALIFORNIA
APPROVED BY: *Raymond L. Quigley* DATE: 11/20/56

CITY OF RIVERSIDE CALIFORNIA
DEPARTMENT OF PUBLIC WORKS

STREET PLAN & PROFILE
FAIRVIEW AVENUE &
CHATHAM DRIVE
YORKSHIRE HEIGHTS-UNIT 3

HORIZONTAL SCALE: 1"=40' VERTICAL SCALE: 1"=4'

APPROVED BY: *[Signature]* DATE: 6-17-57

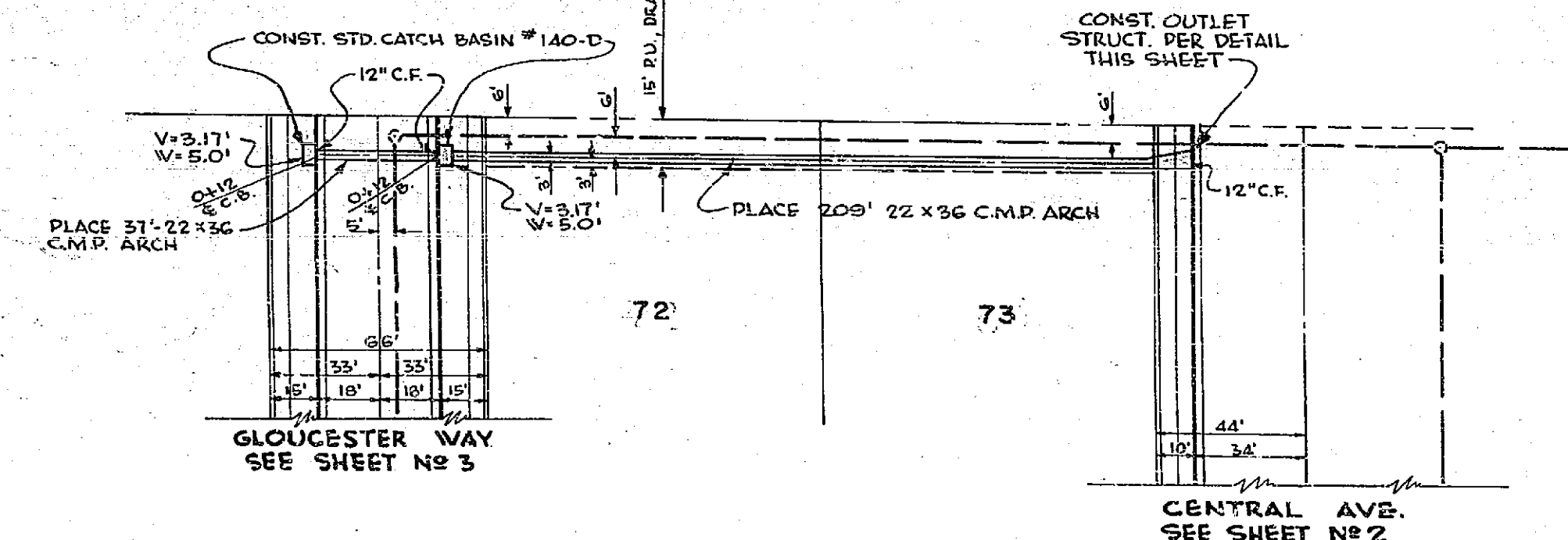
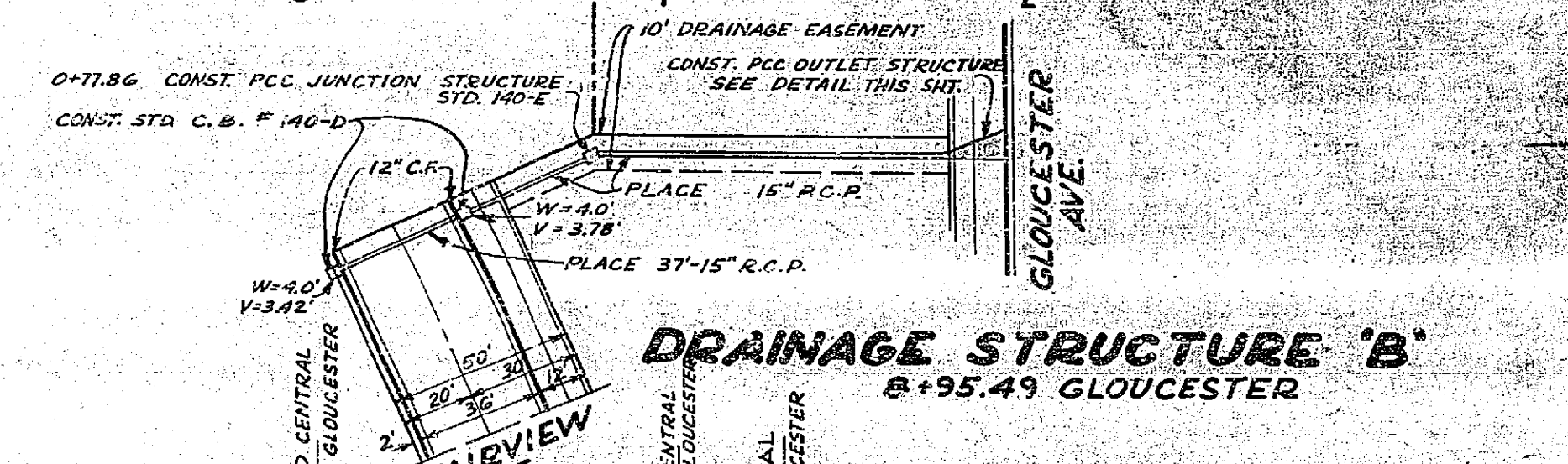
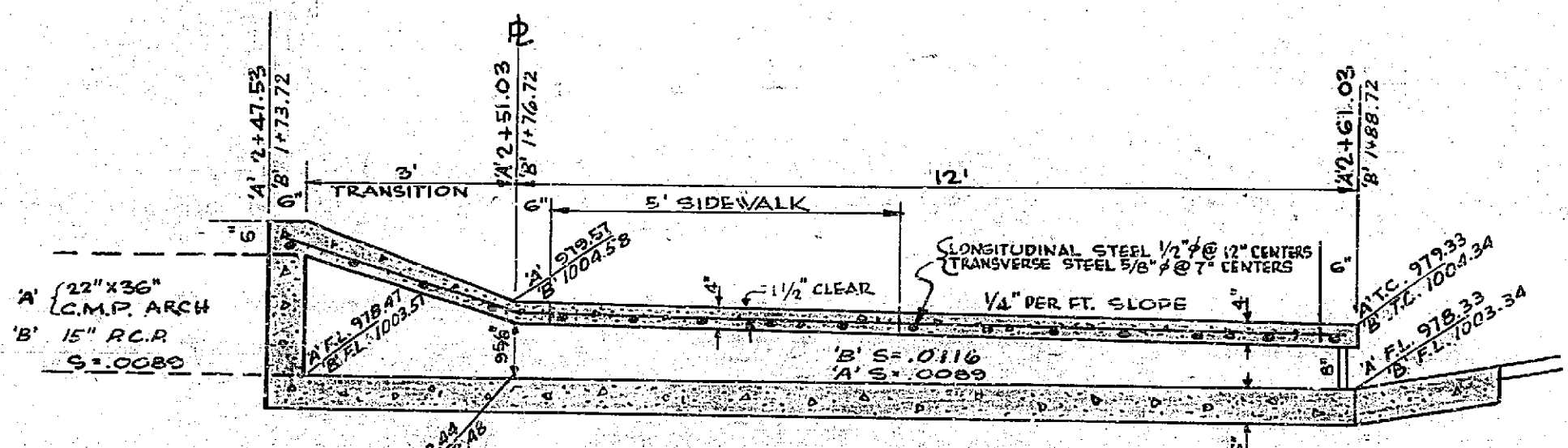
NR **R-129**
SHEET **5** OF **6** SHEETS

PROPERTY OF
CITY OF RIVERSIDE
DEPT. OF PUBLIC WORKS
ENGINEERING DIVISION

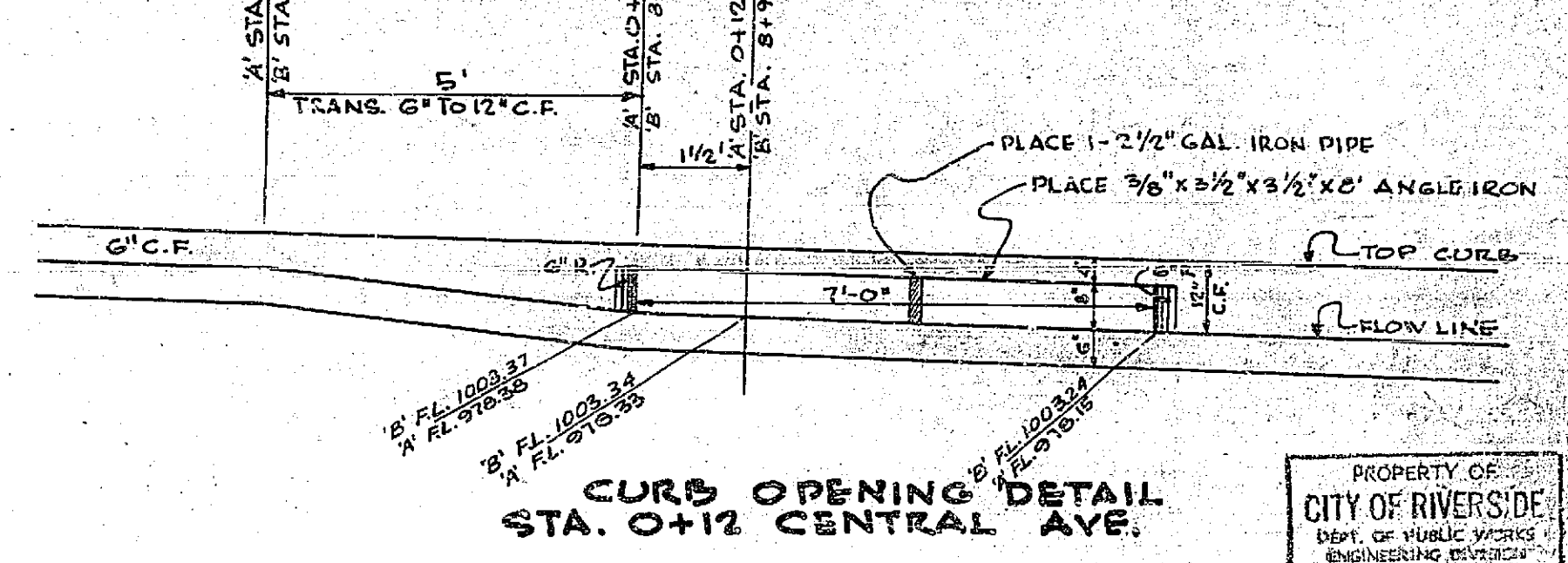
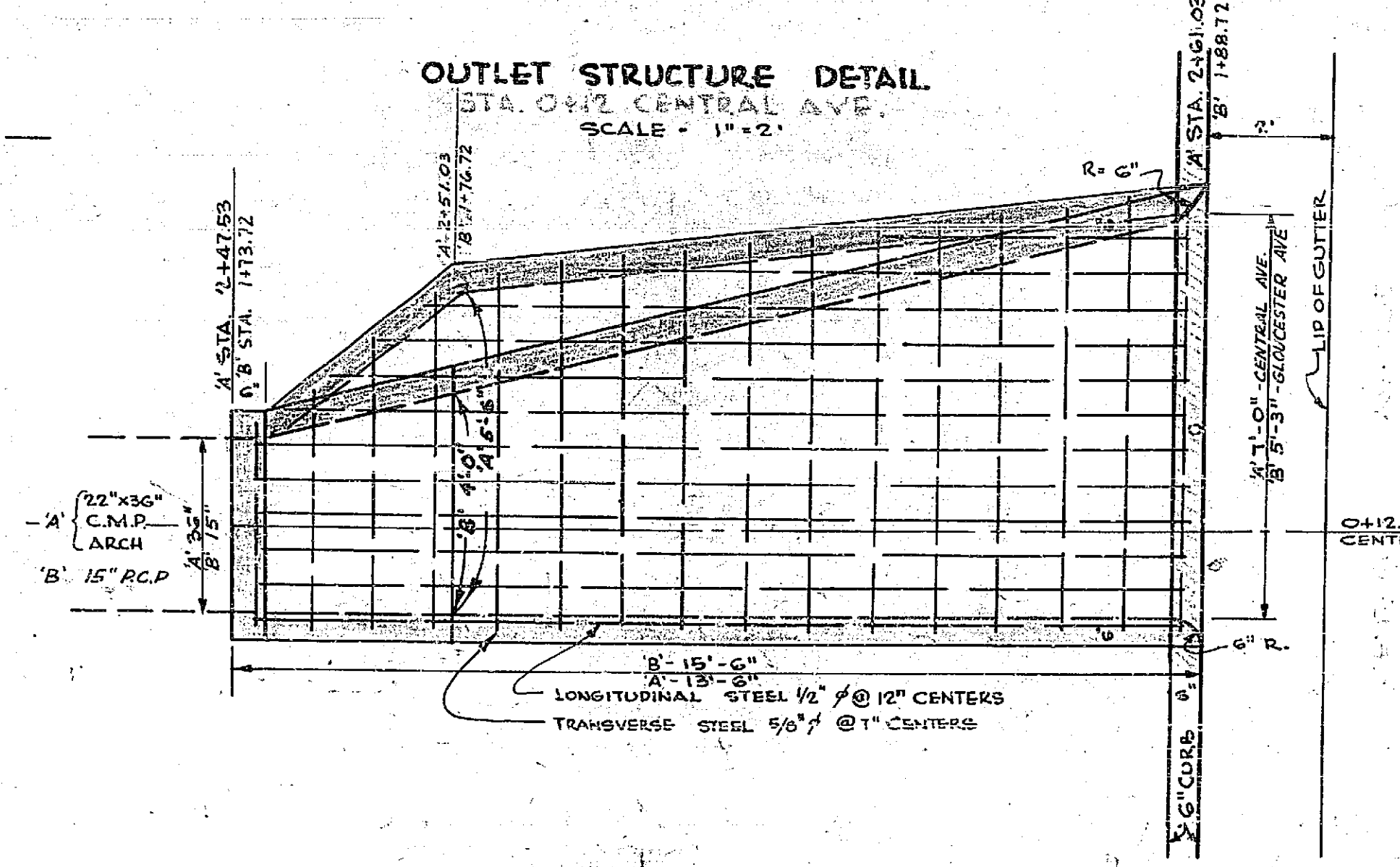
PROPERTY OF
CITY OF RIVERSIDE
DEPT. OF PUBLIC WORKS
ENGINEERING DIVISION



DRAINAGE STRUCTURE 'A'
0+12 CENTRAL AVE.



OUTLET STRUCTURE DETAIL
STA. 0+12 CENTRAL AVE.
SCALE: 1"=2'



BENCH MARK
TOP OF 2" LP (CAPPED) AT 4 INT.
VICTORIA & CENTRAL PER CITY FC
493.76 ELEV. 947.508

RAYMOND L. QUIGLEY - REGISTERED ENGINEER 7191
SOUTH BAY ENGINEERING CO. SANTA ANA, CALIFORNIA
APPROVED BY: *Raymond L. Quigley*, DATE 11/20/50
CITY OF RIVERSIDE CALIFORNIA
DEPARTMENT OF PUBLIC WORKS
DRAINAGE PLAN & PROFILE
LOTS 47 & 26
YORKSHIRE HEIGHTS UNIT 3
HORIZONTAL SCALE: 1"=40' VERTICAL SCALE: 1"=4'
APPROVED BY: *[Signature]*
DIRECTOR OF PUBLIC WORKS
DATE: 6-17-57
No. R-129
SHEET 6 OF 6 SHEETS

PROPERTY OF
CITY OF RIVERSIDE
DEPT. OF PUBLIC WORKS
ENGINEERING DIVISION

PROPERTY OF
CITY OF RIVERSIDE
DEPT. OF PUBLIC WORKS
ENGINEERING DIVISION