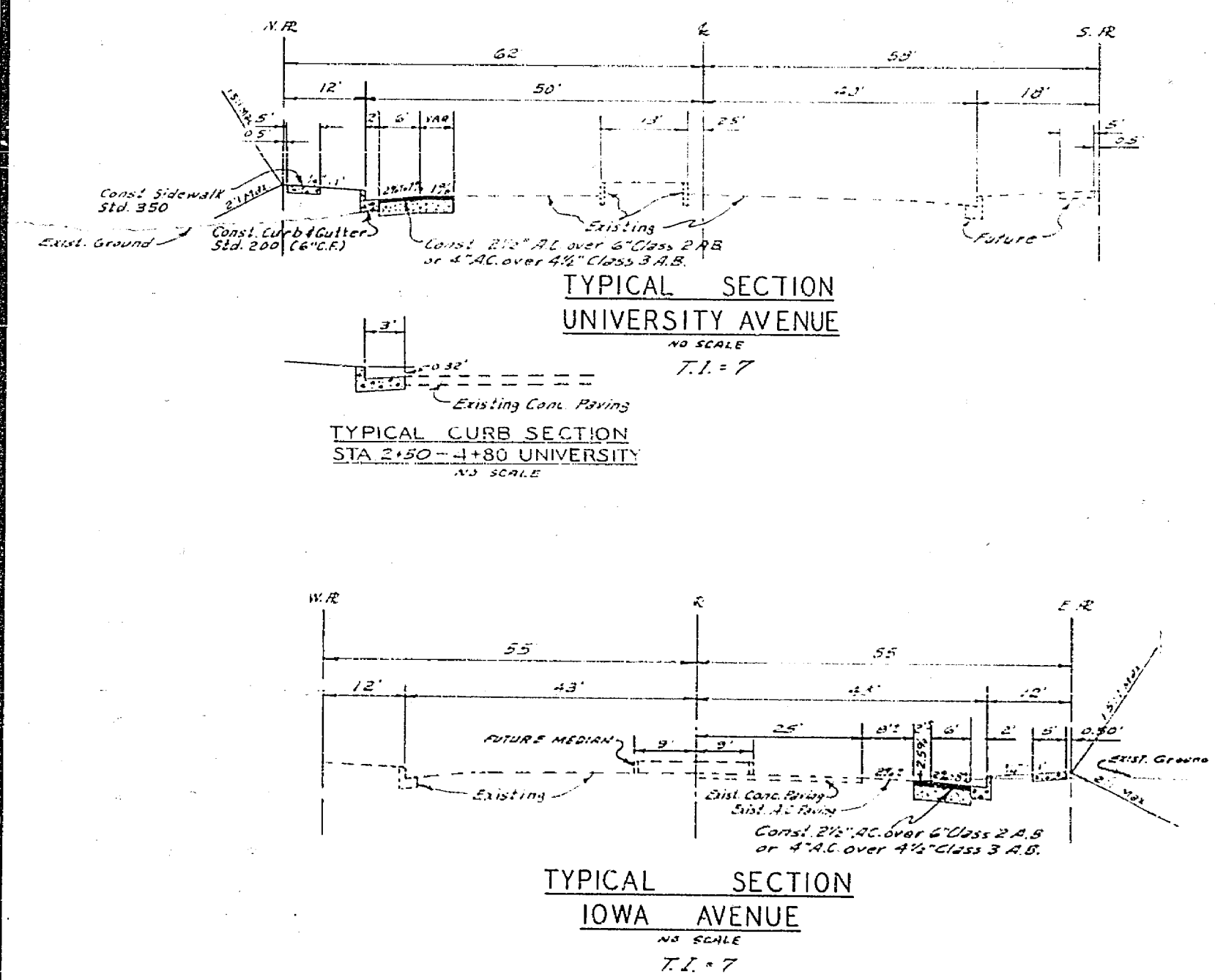


- SHEET 1301 (10/68)
1. All street light standards and pullboxes to be first located by contractor, regardless of plan, and approved in writing by engineer.
  2. All street light standards shall be located for clearance of overhead wires, fire hydrants, and traffic signals.
  3. Excavation for street light standard bases, pullboxes, and conduits will be done after installation of curbs and gutters, but before installation of sidewalks.
  4. Contractor to obtain a street opening permit from City of Riverside Public Works Department prior to any excavation or proposed work in street right-of-way.
  5. Excavations to be made and completed as specified by City of Riverside Public Works Department (Specification 441).
  6. All construction to comply with the latest editions of the City of Riverside Public Utilities Department Street Light Specification 441.
  7. Inspections to be called for as defined in specifications.
  8. This is a two wire 240 volt multiple system.
  9. All cable to be as specified in specifications.
  10. Feed points to be confirmed at time of construction.
  11. See City of Riverside Div. No. 41-1301 for Light Standard Details.
  12. \$1000.00 connection and inspection fee to be paid.
  13. \$250.00 (Date paid) for 1-288-2; for 2-171-1 for 3-400-00.
  14. The City of Riverside Public Engineering Division will pay \$1,500.00 toward the cost of this project in the developer upon completion of the work and receipt of a statement from the developer. Part 1-280-2; Part 2-4-315-2; Part 3-410-00.

**LEGEND**

Indicates City of Riverside maintenance light standard No. 68110 with 25'00" - 40'00" high 1 1/2" diameter aluminum vapor luminaires Cat. No. LM 53-42 or approved equal.

Indicates 1" rigid a.c. steel conduit, except as noted.



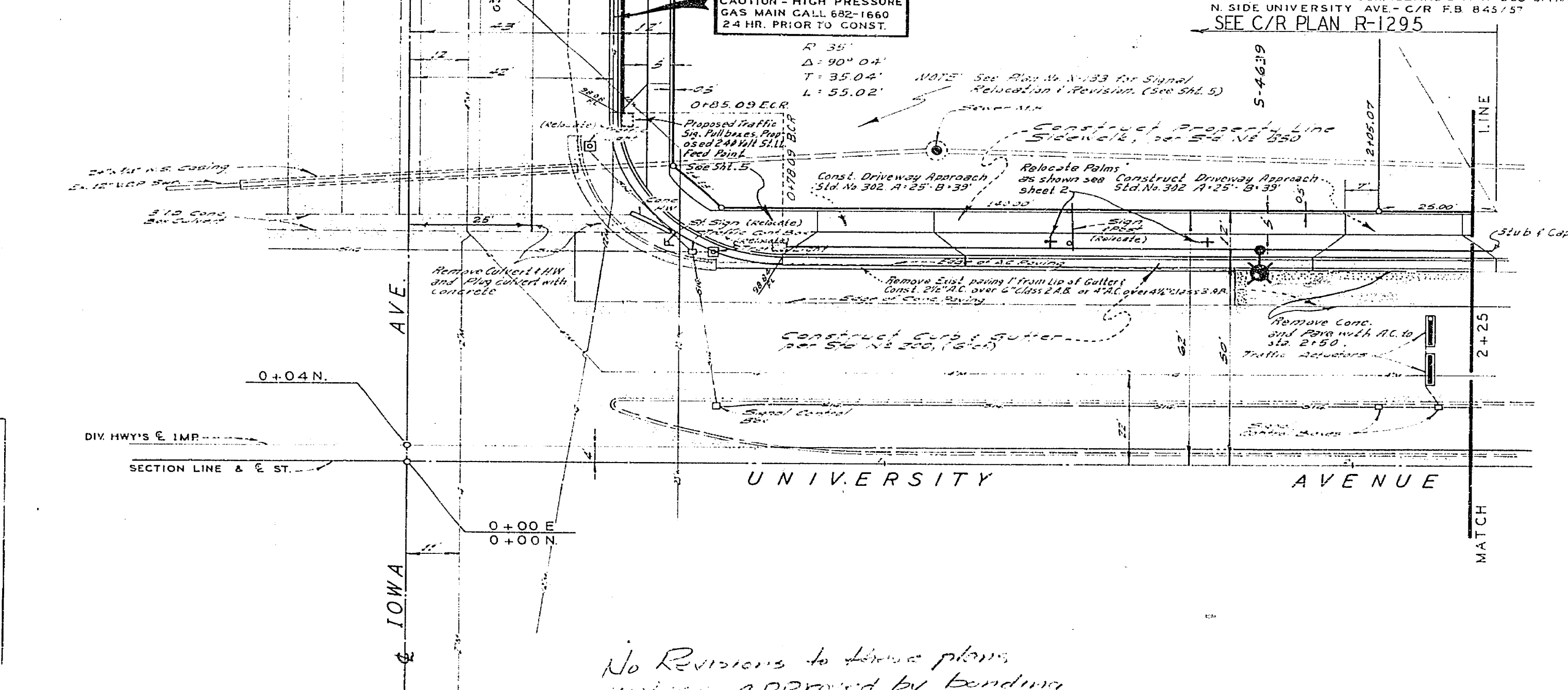
PAR. 2	PAR. 1	QUANTITY ESTIMATE	TOTAL
1691K	200LF	Curb & Gutter Standard Dwg. No. 200 (2'x2')	369 LF
8463E	7493E	Sidewalk Standard Dwg. No. 350	1,595 SF
	2403E	2 1/2" A.C. Paving	240 SF
	ACX	Imported Base Material (Leiss 2 R.B.)	4 CY
	151E	2"x4" Redwood Header	15 LF
35E	55E	Palm Tree Relocation	6 EA.
1E		Cleanout Box Standard Dwg. No. 425	1 EA.
66 LE		18" R.C.P. 2800 D	66 LF
8 LE		24" R.C.P. 2000 D	8 LF
	2 EA	Driveway Approach Standard Dwg. No. 302	2 EA.

**NOTICE TO CONTRACTOR**

Location, name and location of any underground utility lines or structures shown on these plans are obtained by a search of the available records. It is the responsibility of the contractor to locate any existing utilities and structures as shown on these plans.

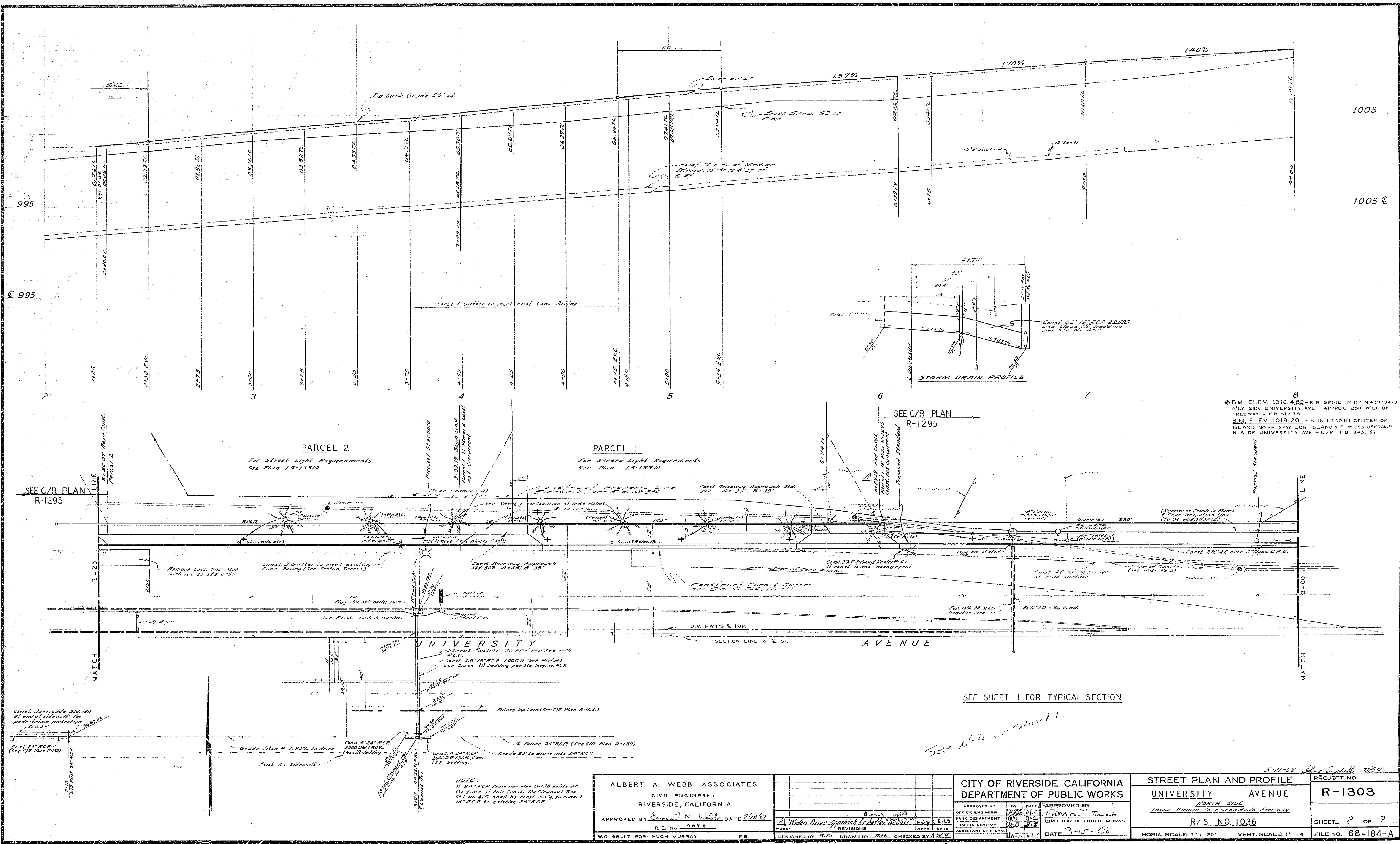
The contractor is required to take the precautions necessary to protect the utility lines shown and any other lines not so shown or not shown on these plans.

SEE SHEET 4 OF 4 FOR PLAN & PROFILE IOWA AVE. SEE CURB PLAN R-1295



No Revisions to these plans unless approved by bonding Company 12/5/68 RW

APPROVED BY <u>Albert A. Webb</u> CIVIL ENGINEER DATE: 5-21-68	APPROVED FOR STREET LIGHTS <u>John A. Webb</u> GEN. SUPV. / CHIEF ENG. DATE: 5-21-68	CITY OF RIVERSIDE, CALIFORNIA DEPARTMENT OF PUBLIC WORKS	STREET PLAN AND PROFILE UNIVERSITY AVENUE NORTH SIDE Iowa Avenue to Second Freeway R/S NO. 1036	PROJECT NO. <b>R-1303</b> SHEET 1 OF 2 FILE NO. 68-184-A
APPROVED BY <u>Albert A. Webb</u> CIVIL ENGINEERS RIVERSIDE, CALIFORNIA APPROVED BY <u>John A. Webb</u> DATE 7/10/68 R.E. No. 257 C	MARK REVISIONS APPR. DATE DESIGNED BY <u>AW</u> DRAWN BY <u>AW</u> CHECKED BY <u>AW</u>	APPROVED BY <u>John A. Webb</u> OFFICE ENGINEER PARK DEPARTMENT TRAFFIC DIVISION ASSISTANT CITY ENG. DATE: 5-21-68	APPROVED BY <u>John A. Webb</u> DIRECTOR OF PUBLIC WORKS DATE: 5-21-68	HORIZ. SCALE: 1" = 20' VERT. SCALE: 1" = 4'



BM. ELEV. 1016.489 - R-R SPIKE IN PP. N. 19794-J  
 N. SIDE UNIVERSITY AVE. APPROX. 250' W. LY OF  
 FREEWAY - FB 51778  
 BM. ELEV. 1019.20 - S. IN LEAD IN CENTER OF  
 ISLAND NOSE S/W COR. ISLAND & F.W. 195 OFFRAMP  
 N. SIDE UNIVERSITY AVE. - C/R FB 845/57

SEE SHEET 1 FOR TYPICAL SECTION

*See Note on sheet 1*

NOTE:  
 If 24" RCP drain per Plan D-130 exists at  
 the time of this Const. The Clearcut Box  
 24" No. 425 shall be const. only to connect  
 18" RCP to existing 24" RCP.

ALBERT A. WEBB ASSOCIATES  
 CIVIL ENGINEER,  
 RIVERSIDE, CALIFORNIA  
 APPROVED BY: *Albert A. Webb* DATE: 7/16/63  
 R.E. No. 9876  
 W.O. 68-17 FOR: HUGH MURRAY F.B.

MARK	REVISIONS	DATE

DESIGNED BY: *S.E.L.* DRAWN BY: *S.M.* CHECKED BY: *A.W.W.*

CITY OF RIVERSIDE, CALIFORNIA  
 DEPARTMENT OF PUBLIC WORKS  
 APPROVED BY: *[Signature]* DATE: 7-15-63  
 OFFICE ENGINEER  
 PARK DEPARTMENT  
 TRAFFIC DIVISION  
 ASSISTANT CITY ENGR.

STREET PLAN AND PROFILE		PROJECT NO.
UNIVERSITY AVENUE		R-1303
NORTH SIDE		
Lower Avenue to Escondido Freeway		
R/S NO. 1036		SHEET 2 OF 2
HORIZ. SCALE: 1" = 20'		FILE NO. 68-184-A
VERT. SCALE: 1" = 4'		