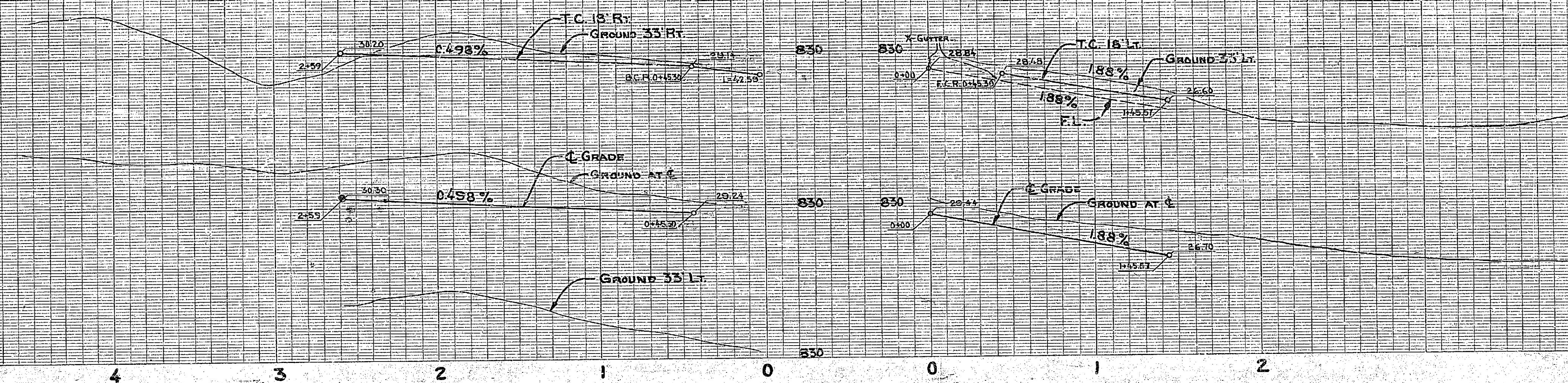
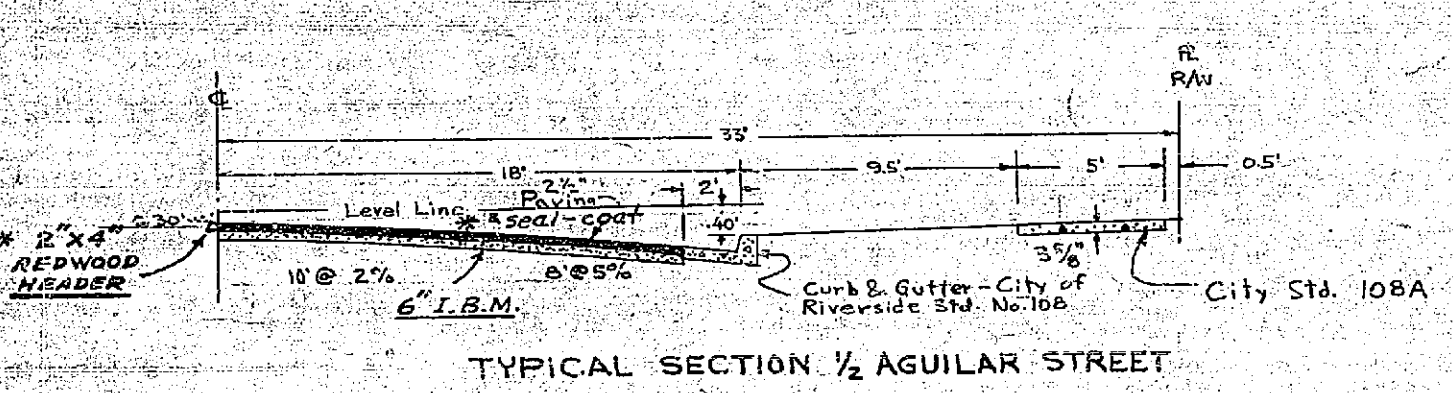
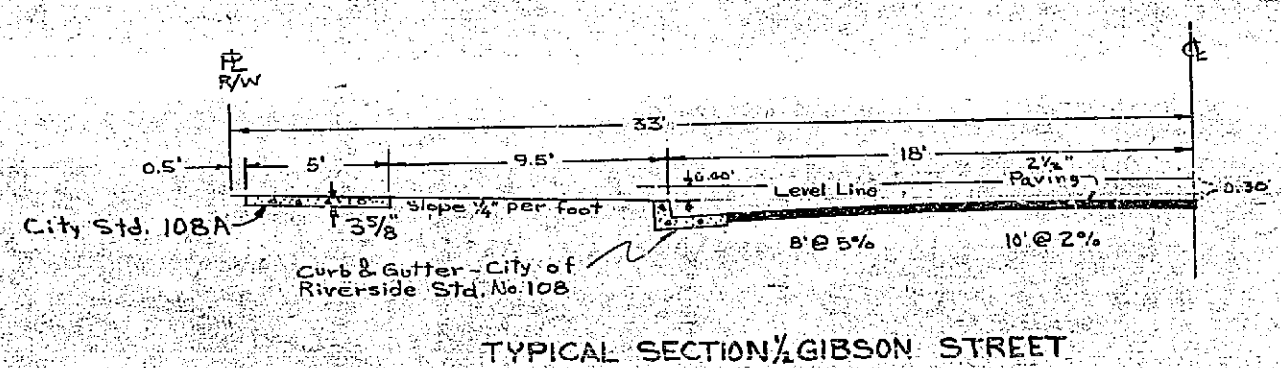
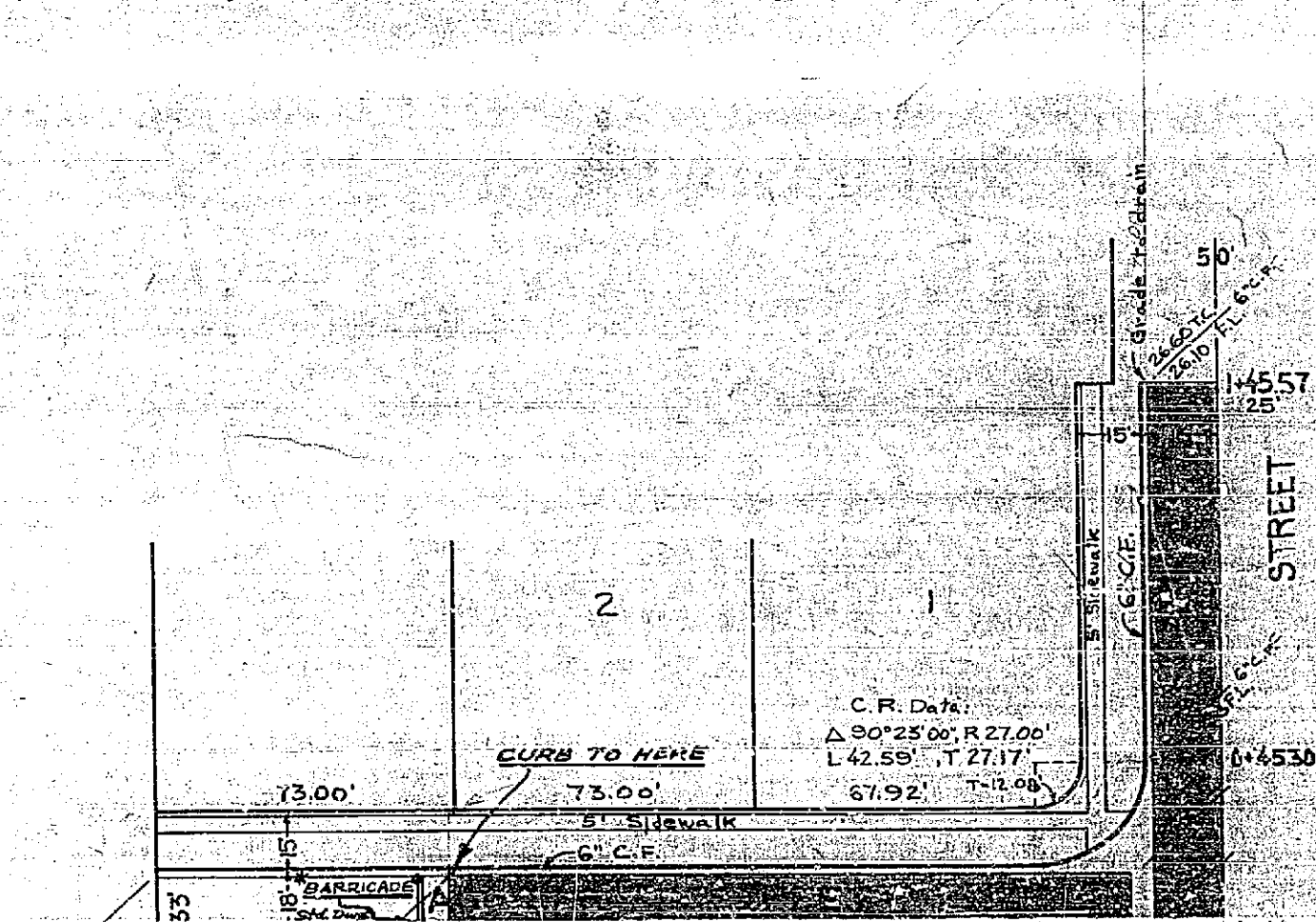
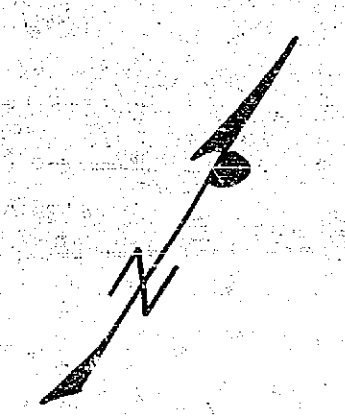


AGUILAR STREET

GIBSON STREET



City B.M. - Elev. 877.13 on 1/2" iron bar in pole SW corner of Gibson and Indiana.



* changes as noted.

DAVID F. ROMERO - CIVIL ENGINEER
 R.E. No. 10010

APPROVED BY *David Romero* DATE 11-4-56

CITY OF RIVERSIDE, CALIFORNIA
 DEPARTMENT OF PUBLIC WORKS

STREET PLAN & PROFILE
 1/2 AGUILAR ST. & 1/2 GIBSON ST.

HORIZ. SCALE 1"=60' VERT. SCALE 1"=4'

APPROVED BY *David Romero* No. R-132
 Director of Public Works
 Date *Aug 24/1957* Sheet 1 of 1