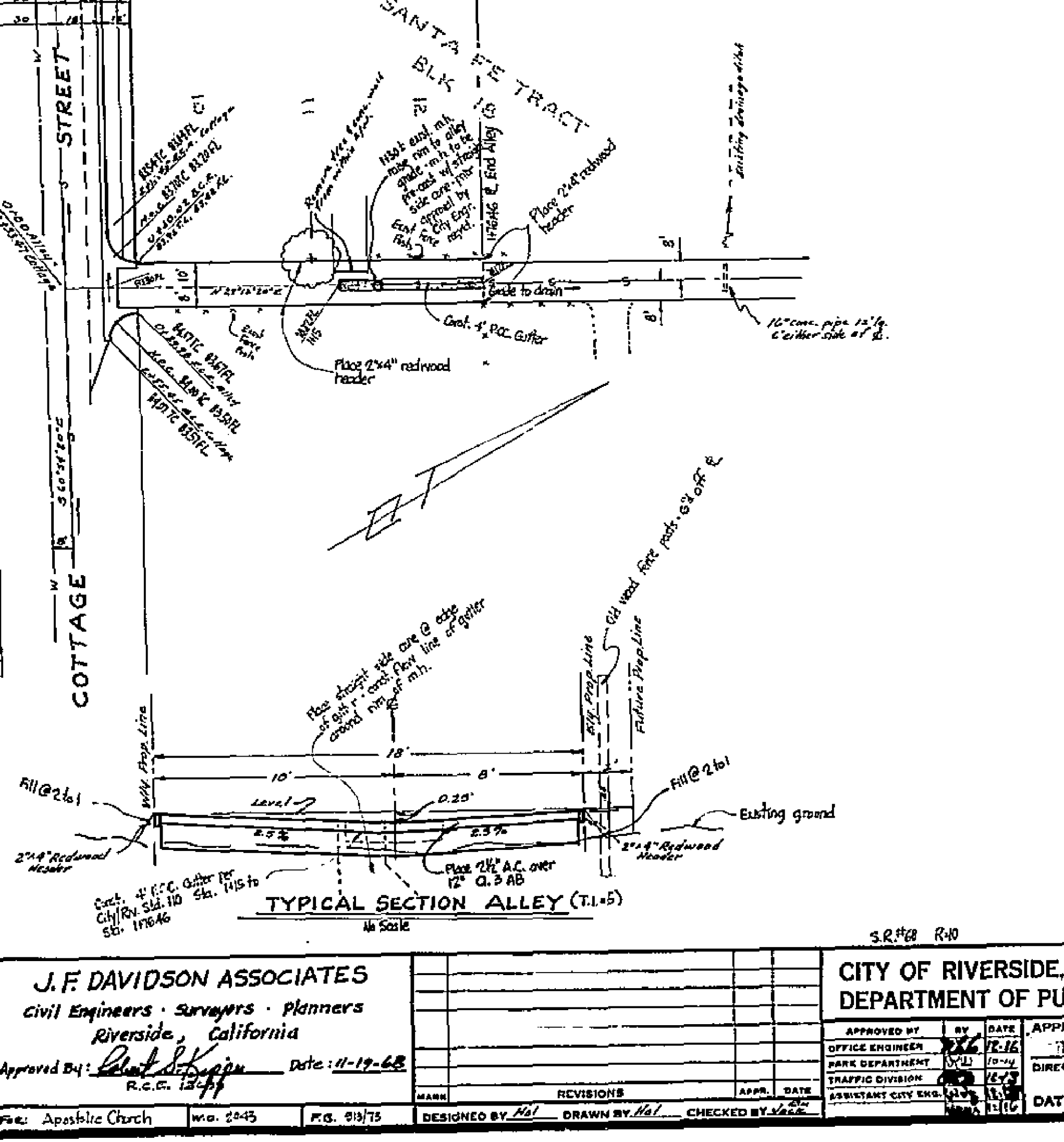
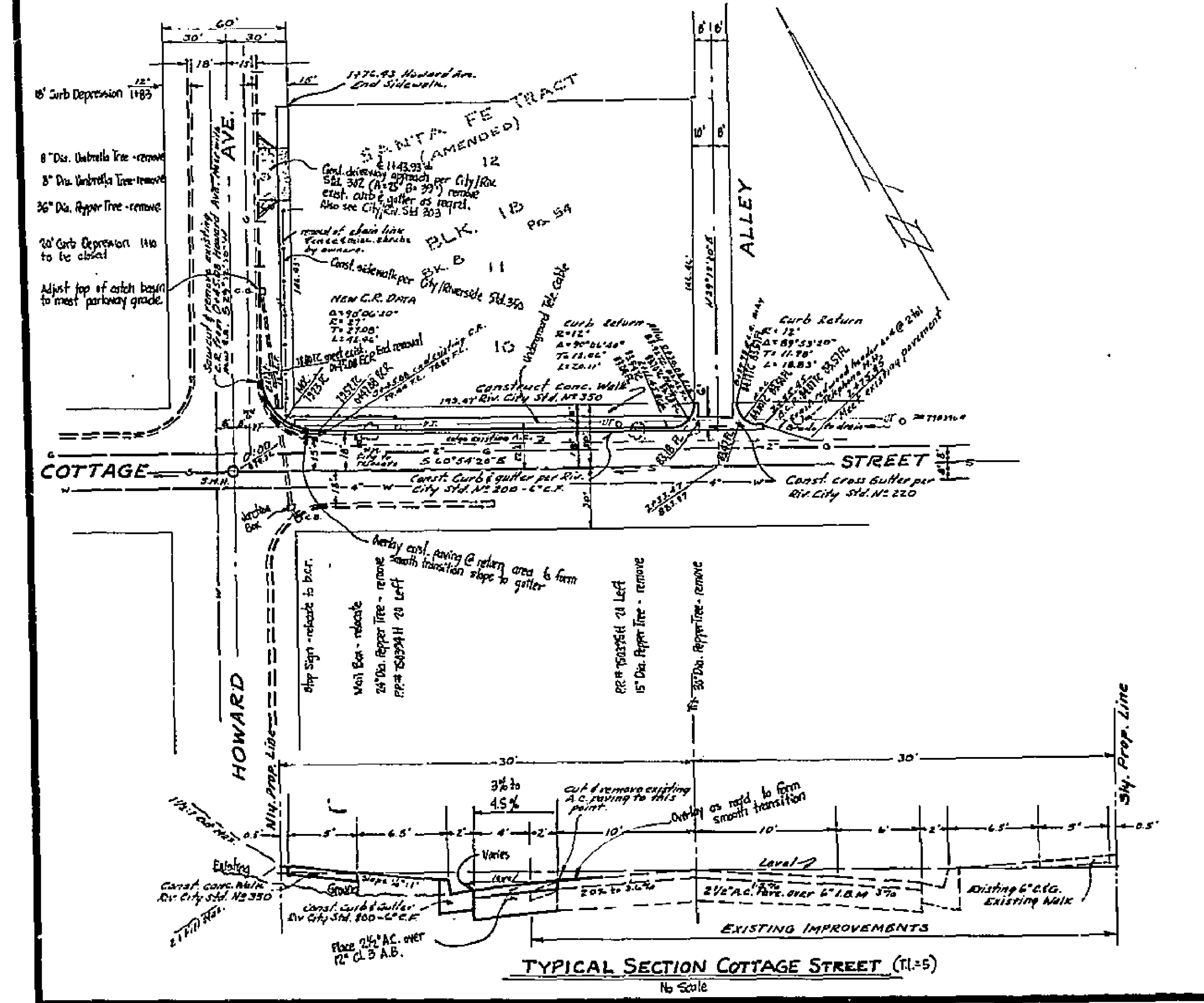
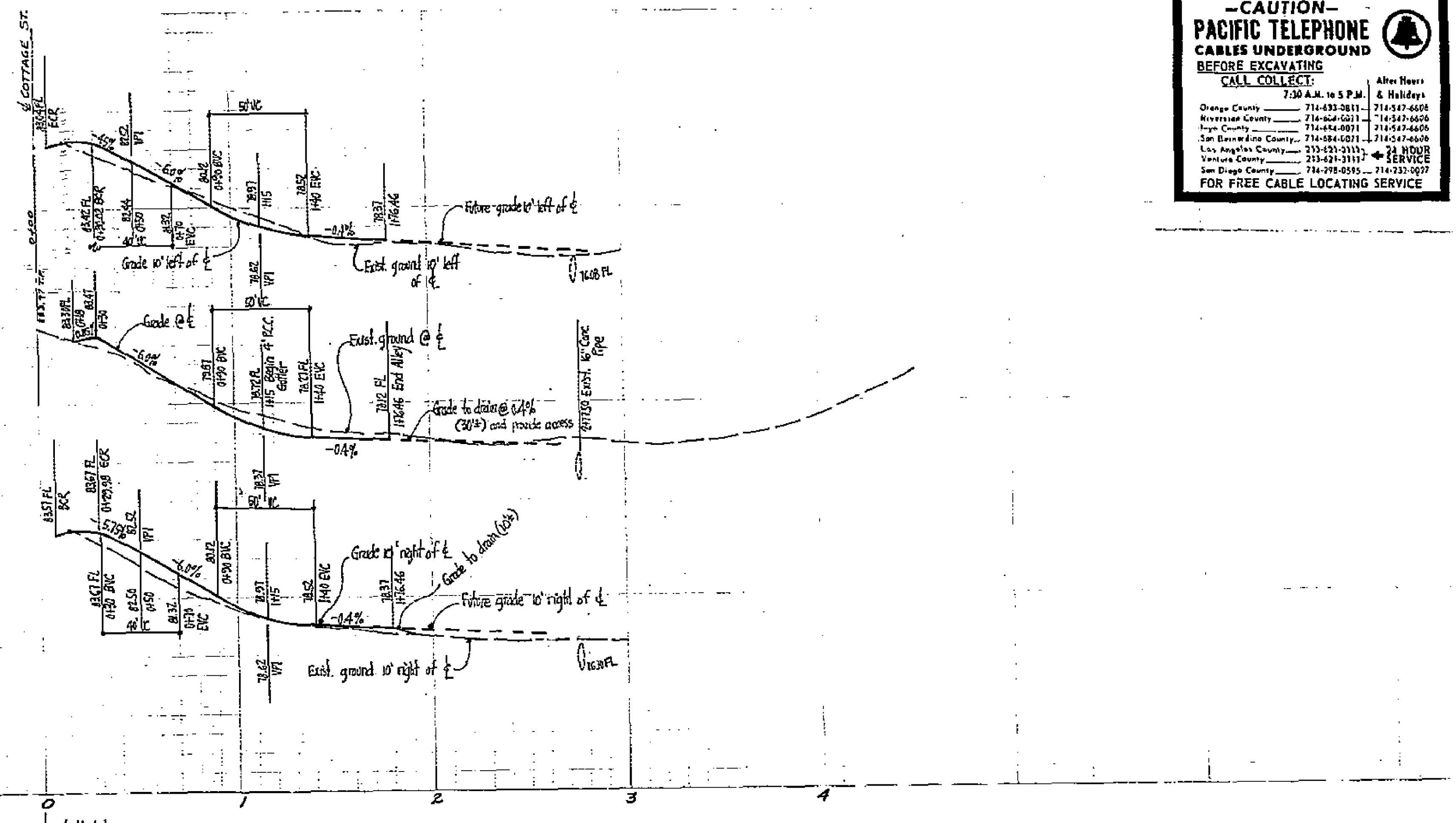
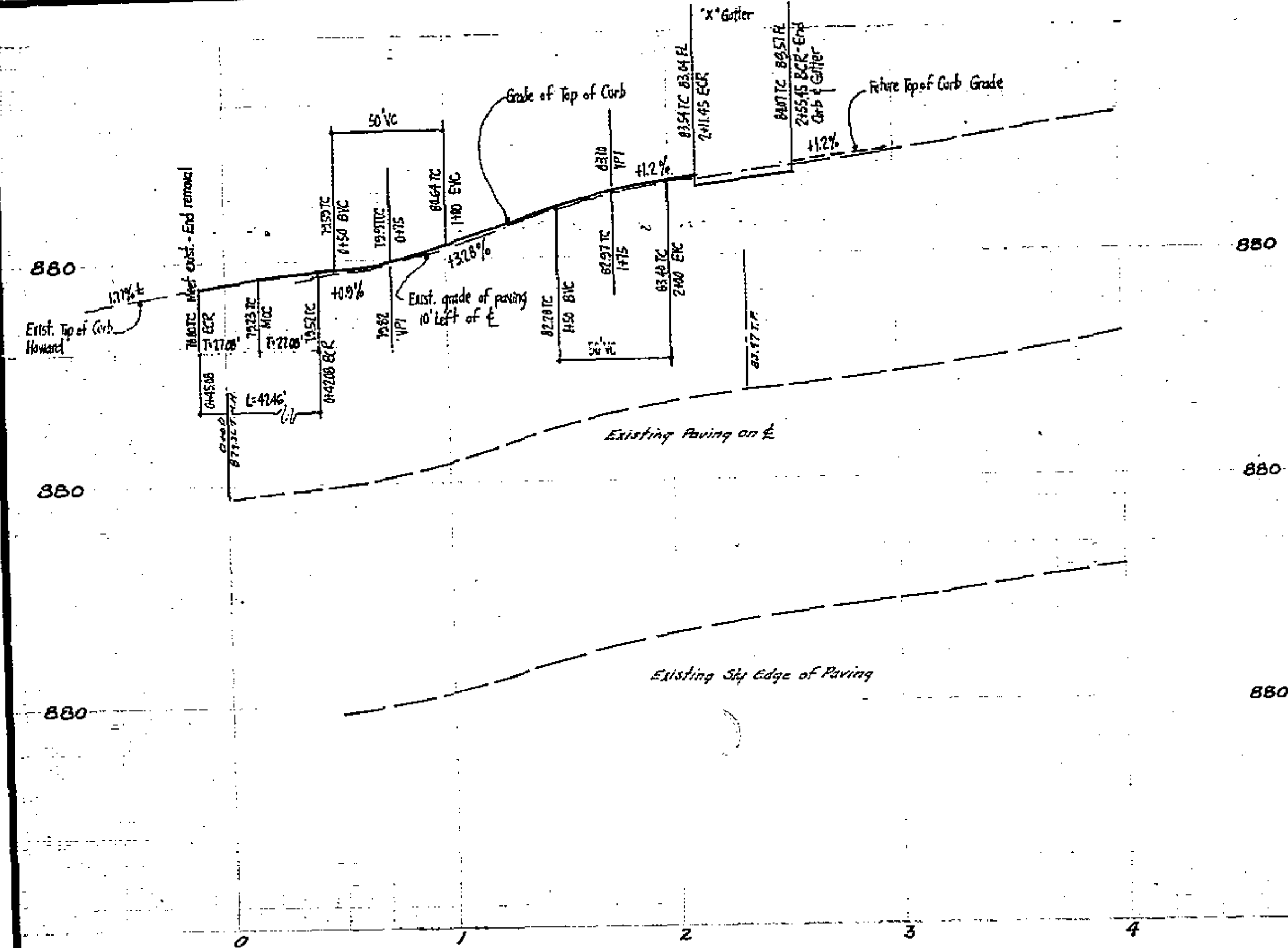


-CAUTION-
PACIFIC TELEPHONE
CABLES UNDERGROUND
BEFORE EXCAVATING

CALL COLLECT:

Orange County	714-433-0811	714-517-6658
Riverside County	714-664-0211	714-547-6656
Imperial County	714-454-0911	714-547-6656
San Bernardino County	714-684-0211	714-547-6656
San Diego County	714-431-3111	714-547-6656
San Joaquin County	714-431-3111	714-547-6656
San Luis Obispo County	714-431-3111	714-547-6656
San Mateo County	714-431-3111	714-547-6656
Santa Clara County	714-431-3111	714-547-6656
Stanislaus County	714-431-3111	714-547-6656
Yuba County	714-431-3111	714-547-6656

FOR FREE CABLE LOCATING SERVICE



- GENERAL NOTES:**
- It shall be the responsibility of the contractor to clear the right of way in accordance with the provisions of law as it affects each utility including irrigation lines and appurtenances and as set out in the City.
 - Construction shall be in accordance with the City of Riverside, Dept. of Public Works, Specifications No. 401 and Standard Drawings.
 - Prime Coat, Seal Coat and Paint Binder are required.
 - Grading will require a permit under ordinance 3093 for a cut or fill exceeding 100 cu. yds. or a fill over one foot in depth.
 - Trim edge of existing paving where new paving joins existing pavement to a sharp straight line. Construct match-up paving as shown and overlay paving as detailed in this plan to produce a smooth curve section. Elevation should be at least 1/2" above.
 - For relocation of any City domestic or irrigation water facilities or electric power utility facilities to be done by City Parks, and/or Water Commercial Dept. at 785-7462. Schedule about 2 weeks to process a work order, before relocation work begins.
 - Remove all trees within right of way on Cottage Street, 0+00 to 2+45.55 s.c.s.
 - Remove trees and concrete wall from the alley.
 - Cancel curbs & reconstruct City: City/Riv. 24 hrs. prior to tree removal @ Ph. 787-1301.

Bench Mark:
 City B.M. - Lead 17.2' at s.c.s. M.C. curb return, Cottage & Park. R.R. 34/40
 Elevation: 886.51'

J.F. DAVIDSON ASSOCIATES Civil Engineers - Surveyors - Planners Riverside, California Approved By: <i>[Signature]</i> Date: 11-19-68 R.C.C. 12-1-68		CITY OF RIVERSIDE, CALIFORNIA DEPARTMENT OF PUBLIC WORKS APPROVED BY: <i>[Signature]</i> DATE: 12-17-68 OFFICE ENGINEER: <i>[Signature]</i> DATE: 12-17-68 PARK DEPARTMENT: <i>[Signature]</i> DATE: 12-17-68 TRAFFIC DIVISION: <i>[Signature]</i> DATE: 12-17-68 ASSISTANT CITY ENGINEER: <i>[Signature]</i> DATE: 12-17-68		C.U.P. NO. C9-667 STREET IMPROVEMENT PLANS COTTAGE ST., HOWARD AVE. & ALLEY PROJECT NO. R-1321 SHEET. 1 OF 1 FILE NO. 3355
DESIGNED BY: <i>[Signature]</i> DRAWN BY: <i>[Signature]</i> CHECKED BY: <i>[Signature]</i>	DATE: 12-17-68	HORIZ. SCALE: 1" = 40' VERT. SCALE: 1" = 4'	FILE NO. 3355	