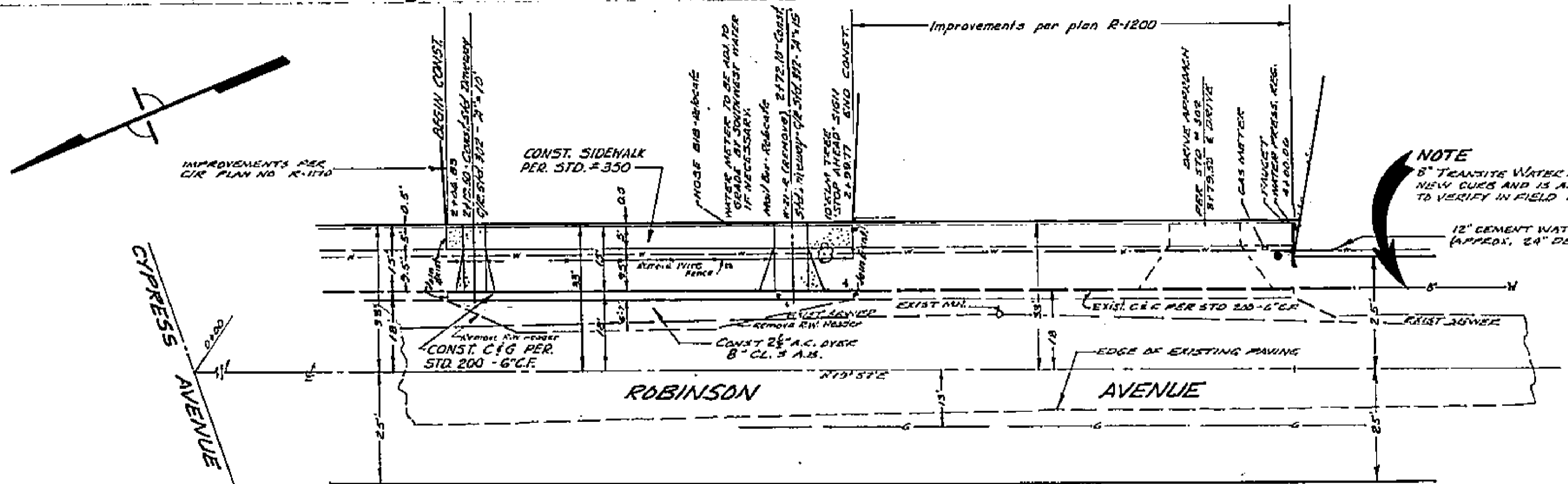
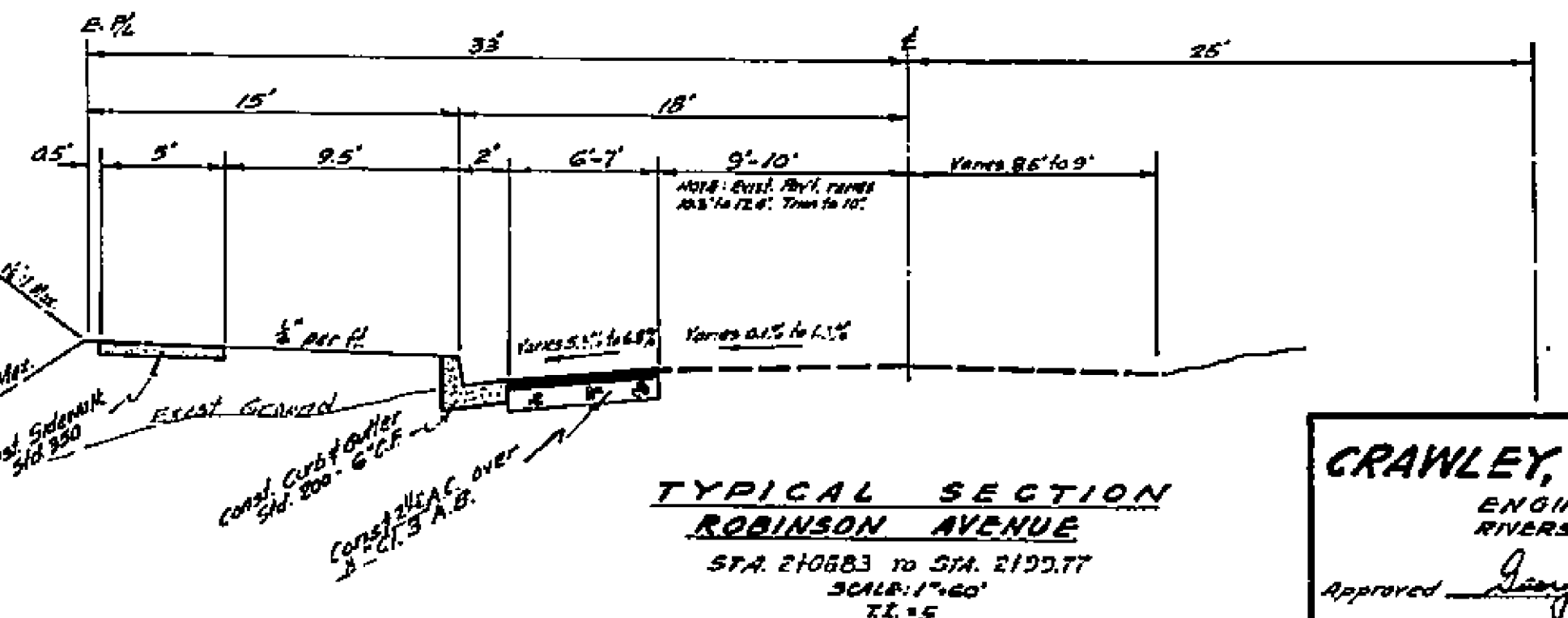


BEVEL MARK
 BE SPINE IN P.A. #1520746 RE. GAR
 OF TYLER AND CYPRESS. ELEV. 783.319 - C.R. 205/410



NOTE
 6" GRANITE WATER LINE IS LOCATED APPROX. UNDER
 NEW CURBS AND IS APPROX. 4" DEEP. CONTRACTOR IS
 TO VERIFY IN FIELD AND PROVIDE PROTECTION IF NECESSARY.



TYPICAL SECTION
 ROBINSON AVENUE
 STA. 210883 TO STA. 210977
 SCALE: 1"=40'
 T.E. 5

GENERAL NOTES

1. It shall be the responsibility of the contractor to clear the right of way in accordance with the provisions of law as it affects each utility including irrigation lines and appurtenances and at no cost to the city.
2. Construction shall be in accordance with City of Riverside Department of Public Works, Specifications No. 361 and Standard Drawings.
3. Prime coat, seal coat and paint binder are required.
4. Grading will require a permit under Ordinance 3093 for a cut or a fill exceeding 100 cubic yards or a fill over one foot in depth.
5. Trim edge of existing pavement, where new paving joins existing pavement, to a clean straight line. Construct match-up paving as shown and overlap as directed in the field to produce a smooth crown section. Engineer estimates overlap to be 0.5 tons.

CRAWLEY, HAWKINS & ASSOC. ENGINEERS & SURVEYORS RIVERSIDE, CALIFORNIA Approved: <i>James O. Crawley</i> Date: 12-6-68 (P.C.E. 9455)		CITY OF RIVERSIDE, CALIFORNIA DEPARTMENT OF PUBLIC WORKS APPROVED BY: <i>[Signature]</i> DATE: 12-12-68 OFFICE ENGINEER PARK DEPARTMENT TRAFFIC DIVISION ASSISTANT CITY ENG.		APPROVED BY: <i>[Signature]</i> DATE: 12-12-68 DIRECTOR OF PUBLIC WORKS		PROJECT NO. R-1724 SHEET 1 OF 1
DESIGNED BY: <i>SA</i> DRAWN BY: <i>CA</i> CHECKED BY: <i>LA</i>		DATE: 12-1-69 HORIZ. SCALE: 1" = 20' VERT. SCALE: 1" = 2'		FILE NO. 4109		