

**INDEX**

SHEET	TITLE SHEET	CONTRACTOR
1	PLAN & PROFILE	HIERS, MITCHELL & HEDRICK
2	"	HEDRICK, JONES & POLK
3	"	POLK, BRIGHAM & COLLETT
4	"	COLLETT, MOBLEY & WAGNER
5	"	WAGNER, BONITA & PENDLETON
6	"	PENDLETON & TYLER
7	"	TYLER TO STA. 88+00
8	"	STA. 88+00 TO MAGNOLIA
9	"	"

# RIVERSIDE CALIFORNIA



## PUBLIC WORKS DEPARTMENT

# HOLE AVENUE WIDENING

LENGTH OF PROJECT = 7736 Feet = 1.46 Mile

**CONSTRUCTION LEGEND**

SECTION	PLAN	DESCRIPTION
		CONST. CURB AND GUTTER PER STD. DWG. 200. CURB FACE AS NOTED ON CURB PROFILES.
		CONSTRUCT STORM WATER CATCH BASIN, TYPE 3, PER STD. DWG. 405
		NEW CONSTRUCTION FOR STRUCTURAL SECTION SEE TYPICAL SECTION.
		CONSTRUCT GRADED WALKWAY 0.30' D.G. WITH SOIL STABILANT. TYPICAL FOR ALL AREAS EXCEPT WHERE CONCRETE OR A.C. WILL BE PLACED.
		PLACE A.C. (MIN. 0.10" THICK)
		ADJUST EXISTING MANHOLE TO NEW GRADE.
		PLACE OPEN GRADED A.C.
		CENTER LINE
		RIGHT-OF-WAY LINE
		PROPOSED TOP OF SLOPE
		PROPOSED TOE OF SLOPE
		PROPOSED DIRECTION OF FLOW

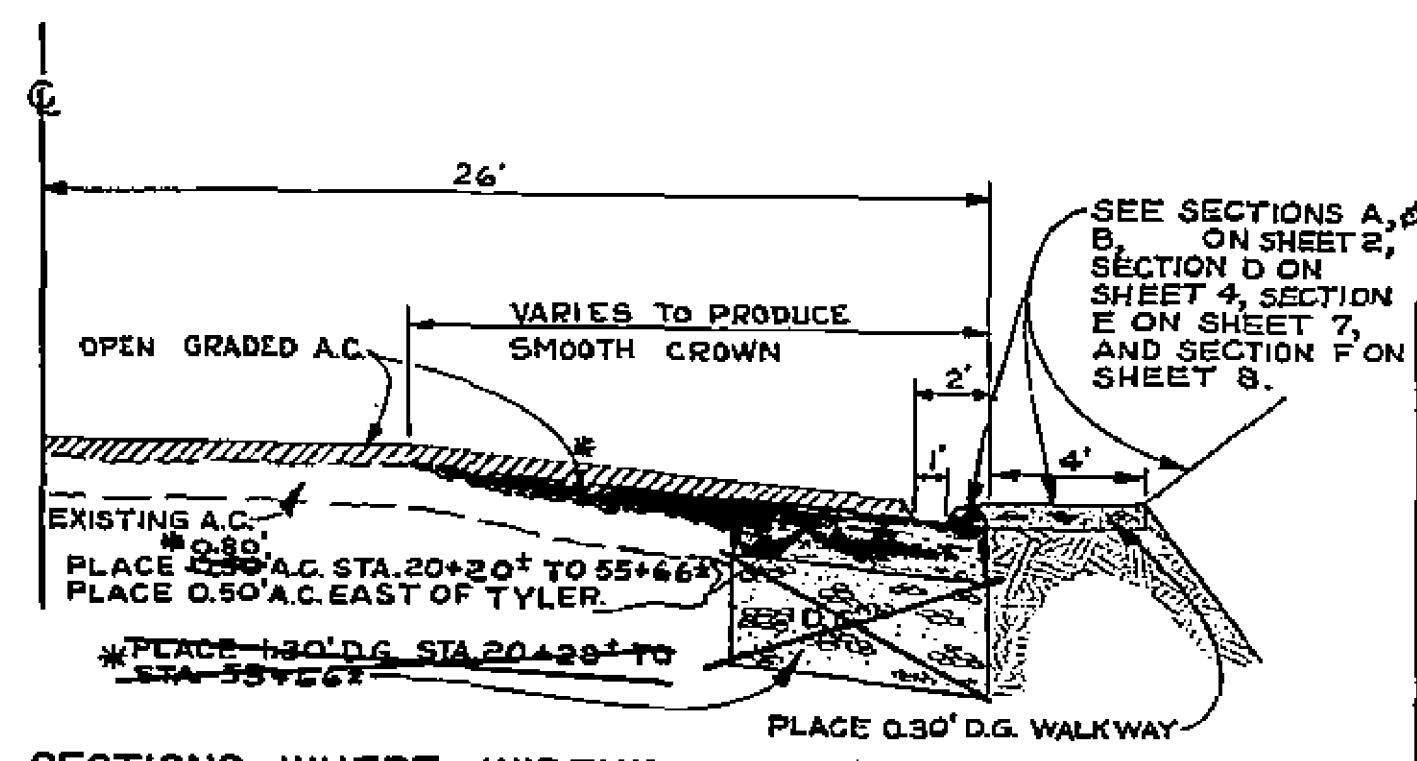
**EXISTING CULTURE & UNDERGROUND LEGEND**

**EXISTING UNDERGROUND UTILITIES**

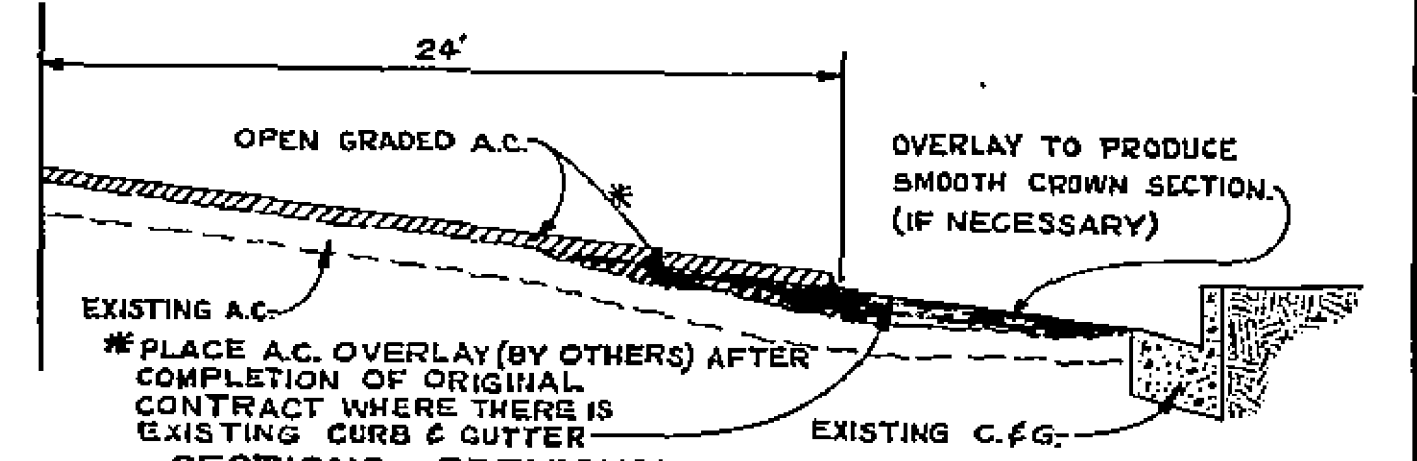
SANITARY SEWER	8" VCP - S	TELEPHONE CONDUIT	T
WATER LINE	8" CI - W	ELECTRICAL CONDUIT	E
STORM DRAIN	24" RCP - SD	STREET LIGHTING	SL
CULVERT	15" CONC - C	TRAFFIC SIGNAL	SIG
IRRIGATION LINE	20" IRR	FIRE ALARM	F
GAS LINE	3" M - G		

**EXISTING TOPOGRAPHY**

	POWER POLE		RAILROAD TRACKS
	GUY POLE		RAILROAD SIGN
	POLE & GUY ANCHOR		RAILROAD SIGNAL
	PULL BOX		
	TRAFFIC SIGN		
	PARKING METER		
	FIRE ALARM BOX		STREET LIGHT
			TRAFFIC SIGNAL
			TRAFFIC SIGNAL ON MAST ARM
			TRAFFIC CONTROL BOX
	GAS METER		TRAFFIC SIGNAL REFLECTOR
	MAIL BOX		PEDESTRIAN CONTROL FOR TRAFFIC SIGNAL
	ELECTRICAL CONDUIT IN CROSS SECTION		
			TREE SHOWING DIAMETER IN INCHES
			PALM SHOWING DIAMETER IN INCHES
			SHRUBBERY
			TREE STUMP DIAMETER IN INCHES
			TOP OF SLOPE
			TOE OF SLOPE
			DIRECTION OF FLOW



SECTIONS WHERE WIDENING IS REQUIRED

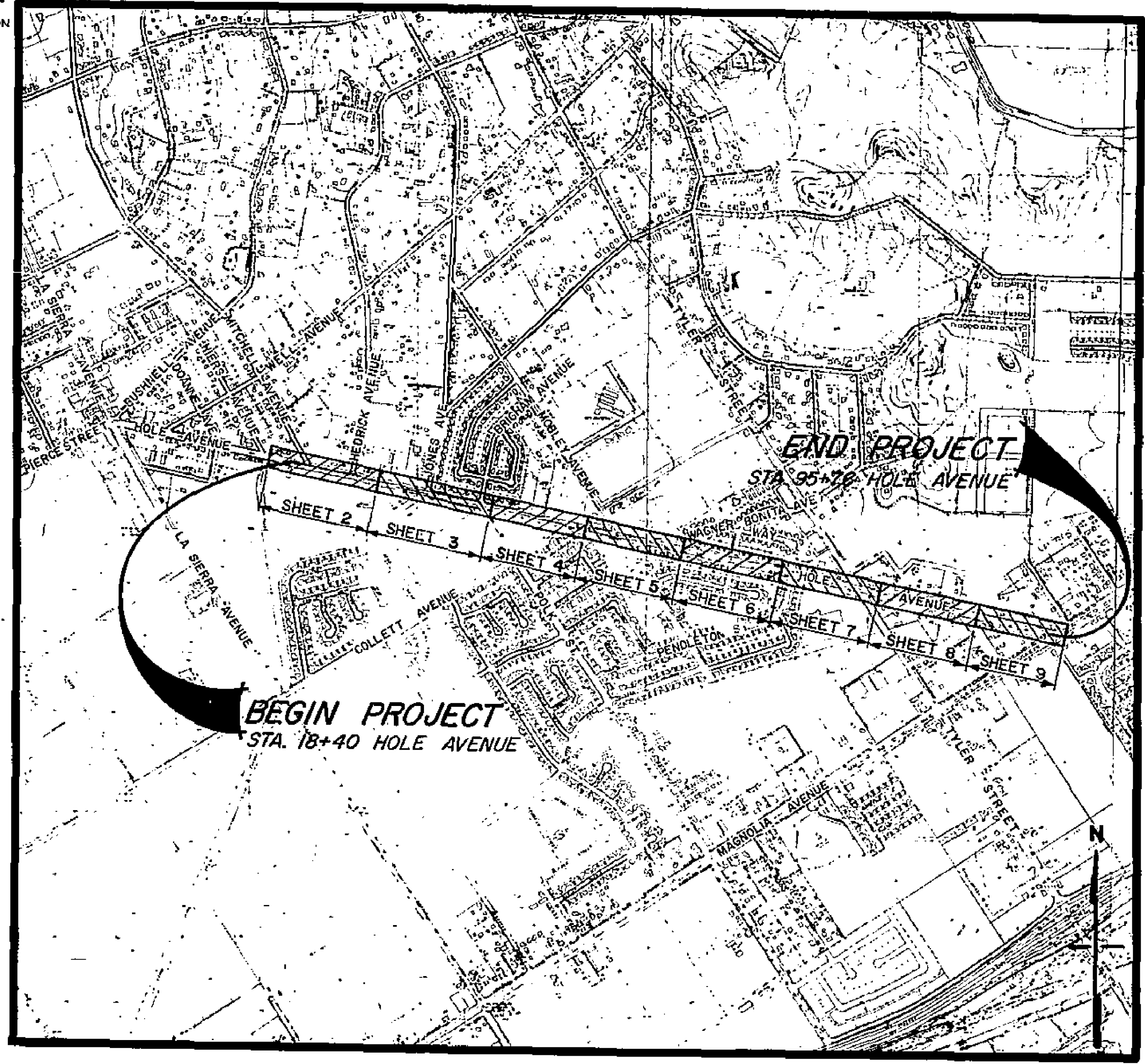


SECTIONS PREVIOUSLY WIDENED

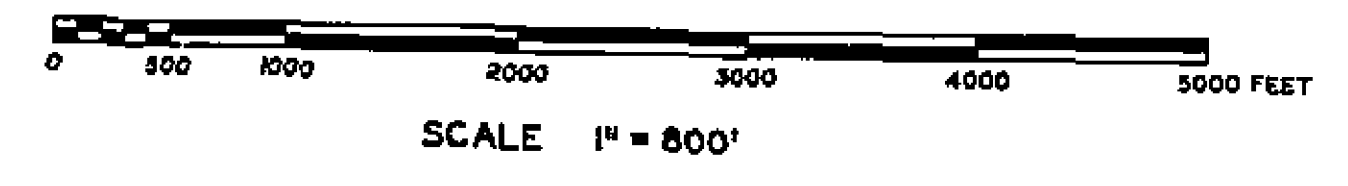
TYPICAL SECTIONS  
N.T.S.

**GENERAL CONSTRUCTION NOTES**

- WHERE NEW CONSTRUCTION IS INDICATED (a) CLEAR AND GRUB.
- SIDEWALK REMOVAL SHALL BE TO THE NEAREST CONSTRUCTION JOINT OR AS DIRECTED BY THE ENGINEER.
- LIMITS OF OPEN GRADED ASPHALT SHALL BE TO 24' EACH SIDE OF C FOR THE ENTIRE LENGTH OF THE PROJECT.
- WHERE A.C. BERM MEETS C. & G., EDGE OF A.C. PAVEMENT SHALL MEET BACK OF CURB.
- X-SECTIONS ARE AVAILABLE AT THE PUBLIC WORKS DEPARTMENT FOR INSPECTION BY THE CONTRACTOR.



**PROJECT LOCATION PLAN**



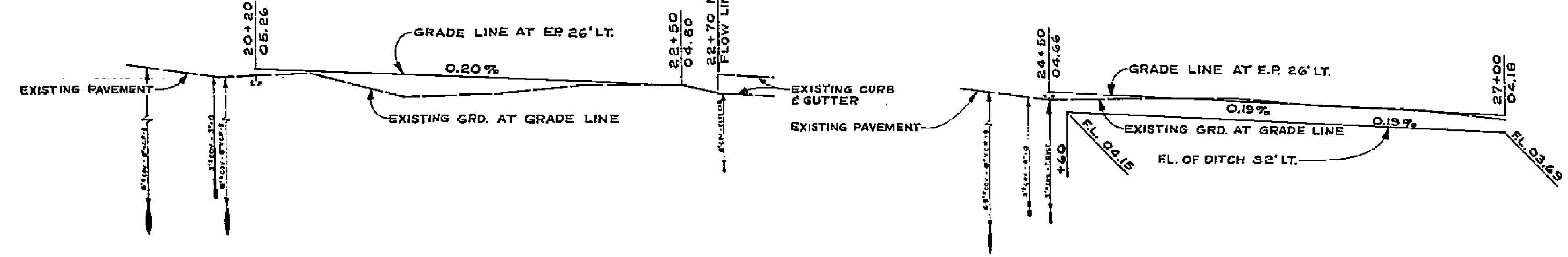
**HOLE AVE WIDENING**

APPROVED BY	BY	DATE	APPROVED BY	ACCOUNT NO. 358
PRINCIPAL ENGINEER				DRAWING NUMBER
PUBLIC DEPARTMENT				<b>R - 1327</b>
TRAFFIC DIVISION			DIRECTOR OF PUBLIC WORKS	
CHIEF PBL. WKS. ENGR.			DATE 6-11-70	SHEET 1 OF 9
DESIGNED BY		DRAWN BY		CHECKED BY

16 17 18 19 20 21 22 23 24 25 26 27

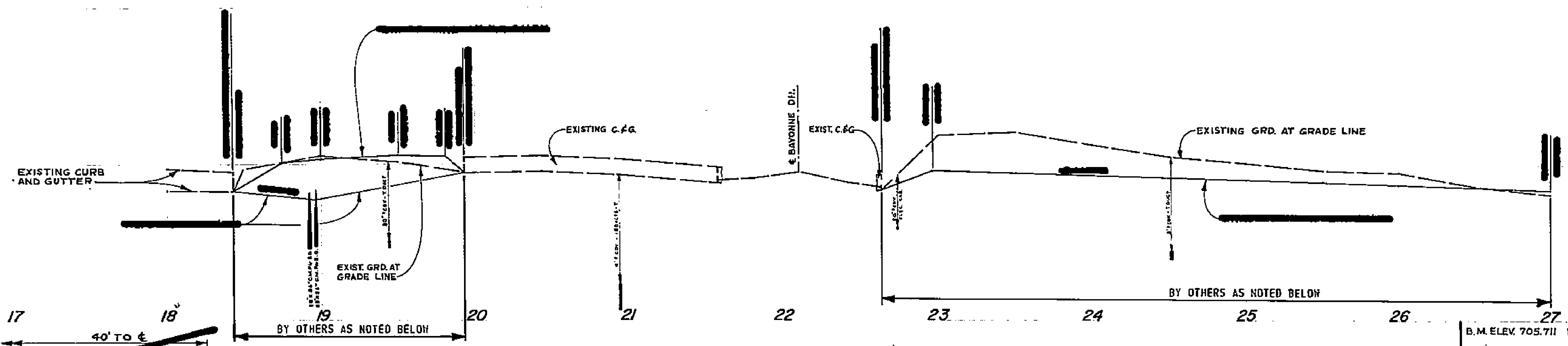
706  
705

705  
704

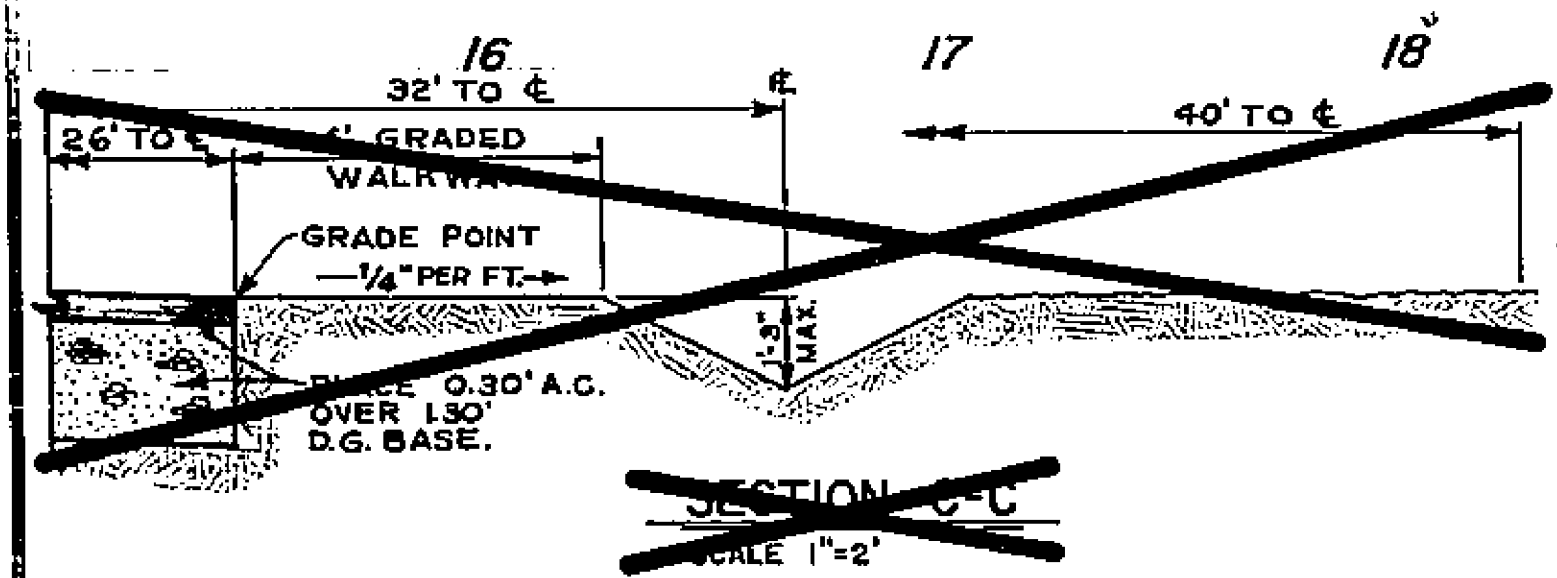


706  
705  
704

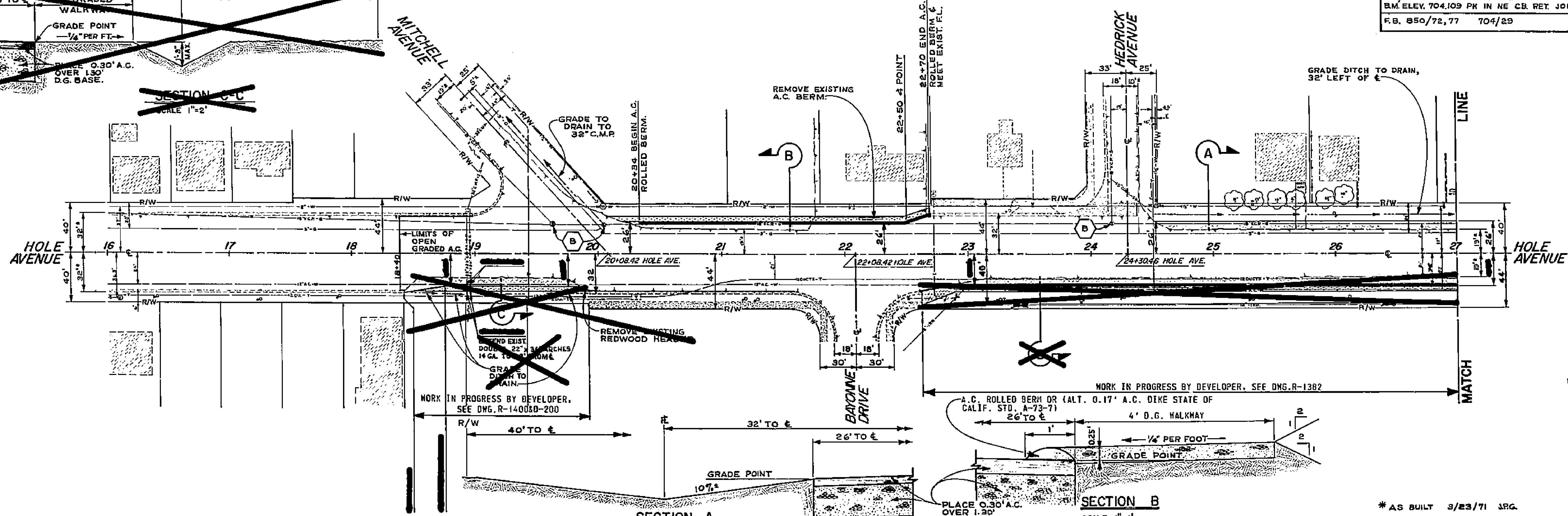
706  
705  
704



B.M. ELEV. 705.711 PK IN S. CB. HOLE OPP HIERS AVE. (AT E. R.C.F.C. CHANNEL)  
B.M. ELEV. 704.109 PK IN NE CB. RET. JONES & HOLE  
F.B. 850/72,77 704/29



~~SECTION C-C~~  
SCALE 1"=2'



WORK IN PROGRESS BY DEVELOPER, SEE DNG. R-140080-200

WORK IN PROGRESS BY DEVELOPER, SEE DNG. R-1382

SECTION A  
SCALE 1"=2'

SECTION B  
SCALE 1"=1'

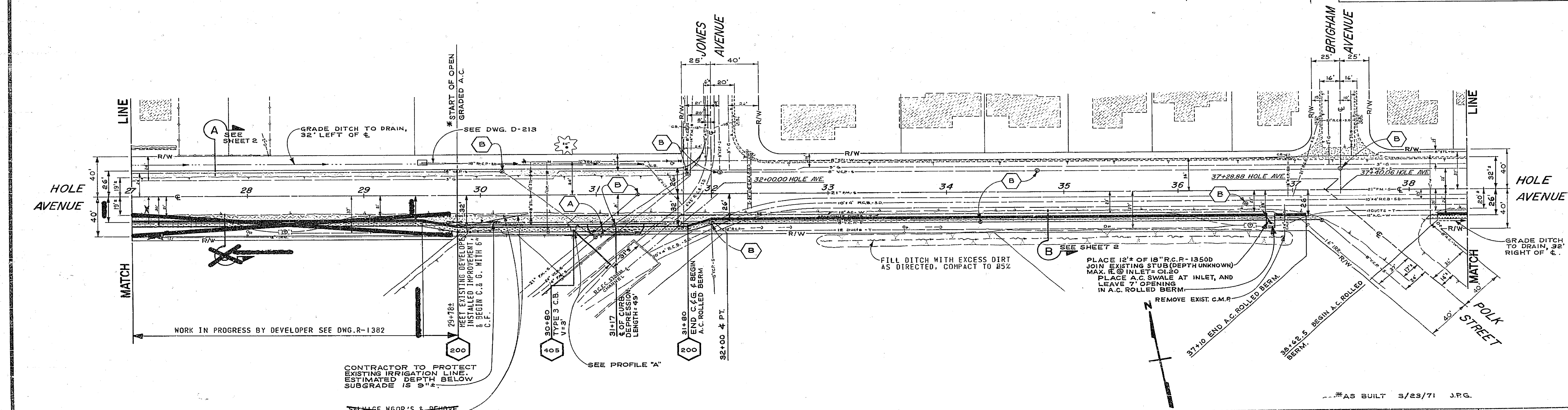
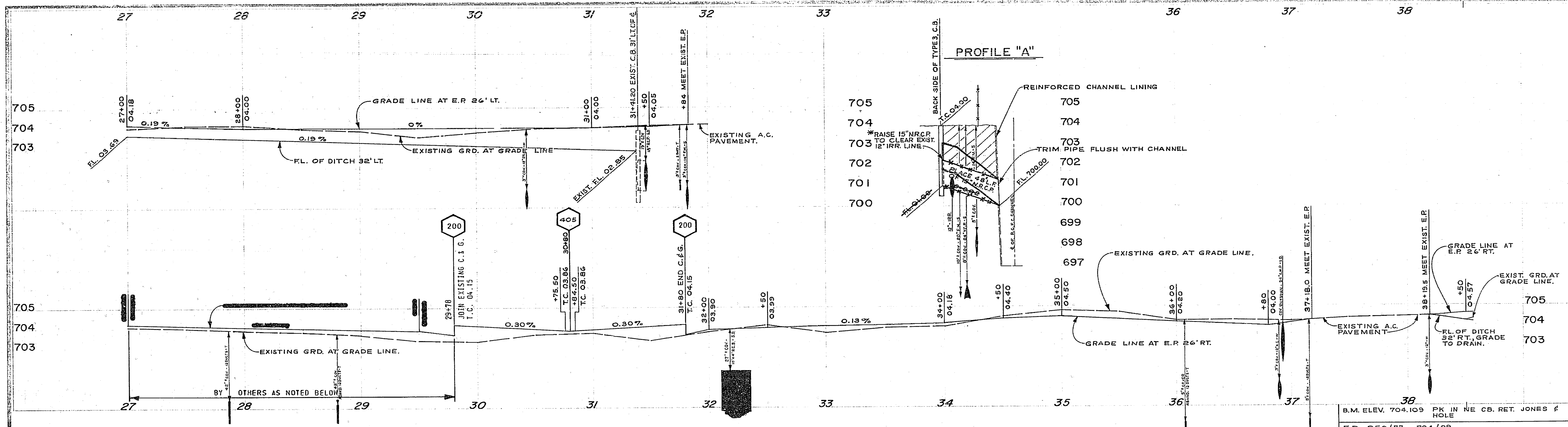
\* AS BUILT 3/23/71 JRG.

**-CAUTION-**  
**PACIFIC TELEPHONE**  
CABLES UNDERGROUND  
BEFORE EXCAVATING  
CALL COLLECT:  
7:30 A.M. to 5 P.M. 8 Holidays  
Orange County 714-633-0811 714-647-4556  
Riverside County 714-624-0271 714-647-4556

CITY OF RIVERSIDE, CALIFORNIA  
DEPARTMENT OF PUBLIC WORKS  
APPROVED BY: [Signature] DATE: 6-11-79  
OFFICE ENGINEER: [Signature]  
DIRECTOR OF PUBLIC WORKS: [Signature]

**HOLE AVE WIDENING**  
**PLAN & PROFILE**  
**HIERS, MITCHELL & HEDRICK**  
HORIZ. SCALE: 1" = 40'  
VERT. SCALE: 1" = 2'

PROJECT NO. 358  
**R-1327**  
SHEET 2 OF 9



CONTRACTOR TO PROTECT EXISTING IRRIGATION LINE. ESTIMATED DEPTH BELOW SUBGRADE IS 9\"/>

SERVICE #60R'S & REMOVE HEADER, IF INSTALLED. \* NOT INSTALLED.

**- CAUTION -**  
**PACIFIC TELEPHONE**  
**CABLES UNDERGROUND**  
 BEFORE EXCAVATING  
 CALL COLLECT

After Hours & Holidays  
 7:30 A.M. to 5 P.M.  
 Orange County 714-633-0811  
 Riverside County 714-688-0071

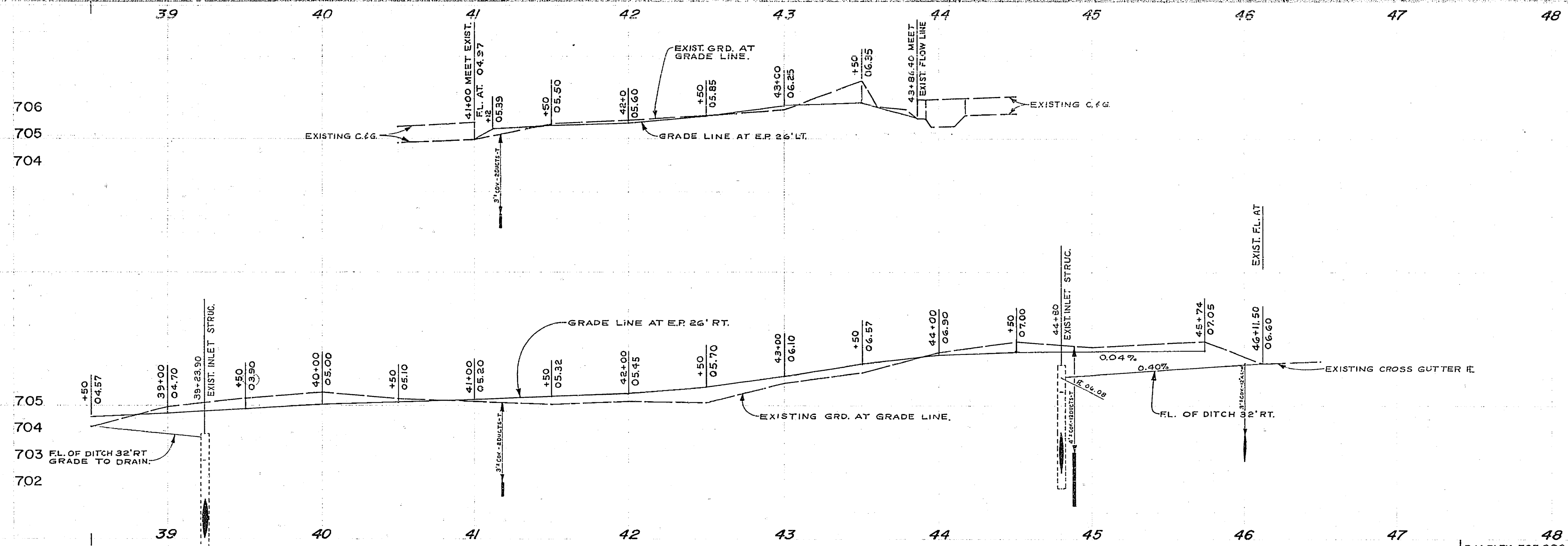
MARK	DESIGNED BY	DRAWN BY	CHECKED BY

CITY OF RIVERSIDE, CALIFORNIA DEPARTMENT OF PUBLIC WORKS	
APPROVED BY	DATE
	6-11-70

HOLE AVE WIDENING	
PLAN & PROFILE	
HEDRICK, JONES & POLK	
HORIZ. SCALE: 1" = 40'	VERT. SCALE: 1" = 2'

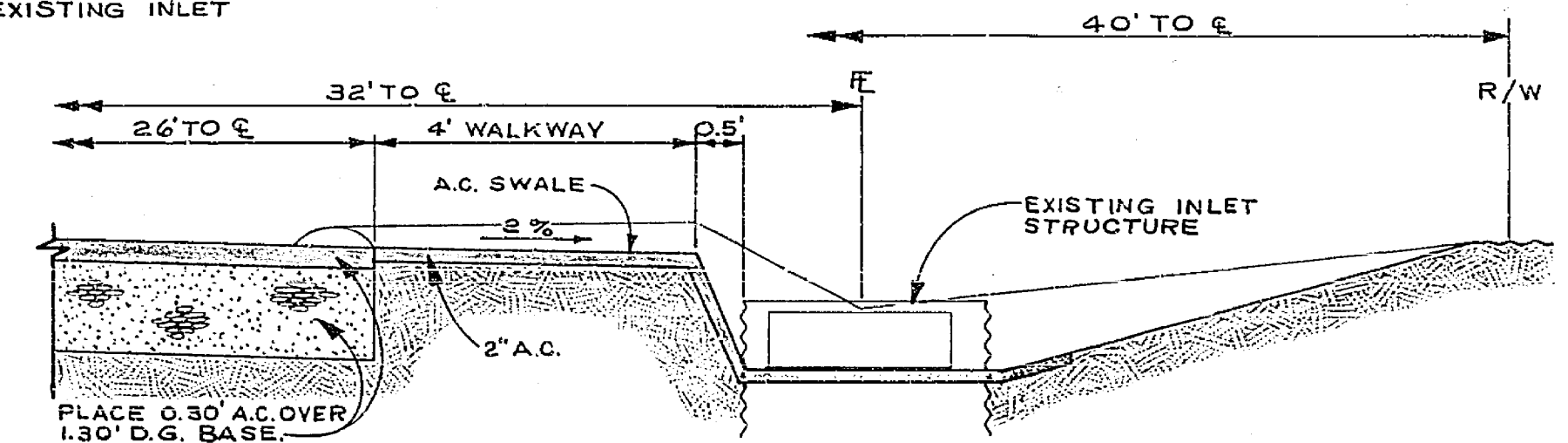
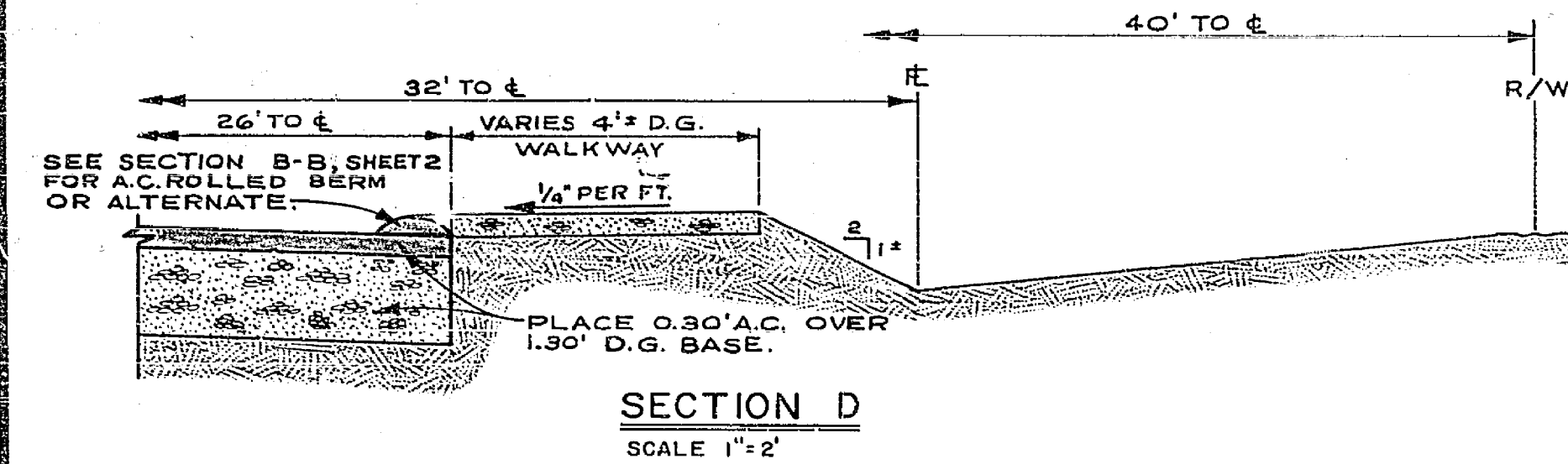
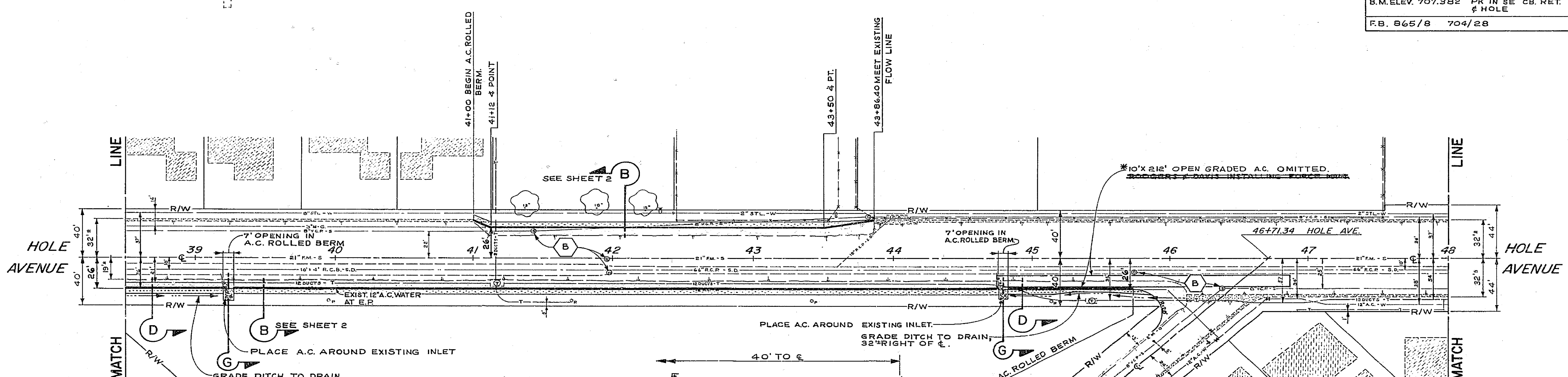
PROJECT NO. 358
<b>R-1327</b>
SHEET 3 OF 9

AS BUILT 3/23/71 J.P.G.



708  
707  
706  
705  
707  
706  
705  
704  
703

B.M. ELEV. 707.382 PK IN SE CB. RET. COLLETT & HOLE  
R.B. 865/8 704/28



**CAUTION**  
PACIFIC TELEPHONE  
CABLES UNDERGROUND  
BEFORE EXCAVATING  
CALL COLLECT:  
7:30 A.M. to 5 P.M.  
After Hours & Holidays  
Orange County 714-933-0811 714-947-2806  
Irvine County 714-841-0971 714-947-1006

NO.	REVISIONS	DATE
1	DESIGNED BY <i>W.C.H.</i> DRAWN BY <i>W.C.H.</i> CHECKED BY <i>DCM</i>	

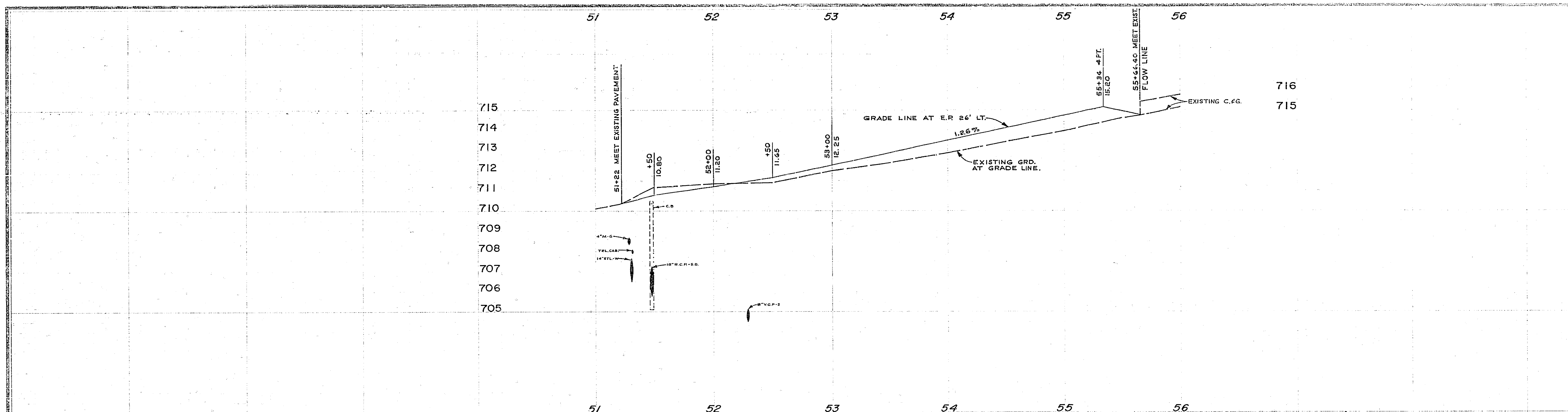
CITY OF RIVERSIDE, CALIFORNIA DEPARTMENT OF PUBLIC WORKS	
APPROVED BY OFFICE ENGINEER <i>[Signature]</i>	DATE 11/70
APPROVED BY DIRECTOR OF PUBLIC WORKS <i>[Signature]</i>	DATE 6-11-70

**HOLE AVE WIDENING**  
PLAN & PROFILE  
POLK, BRIGHAM & COLLETT

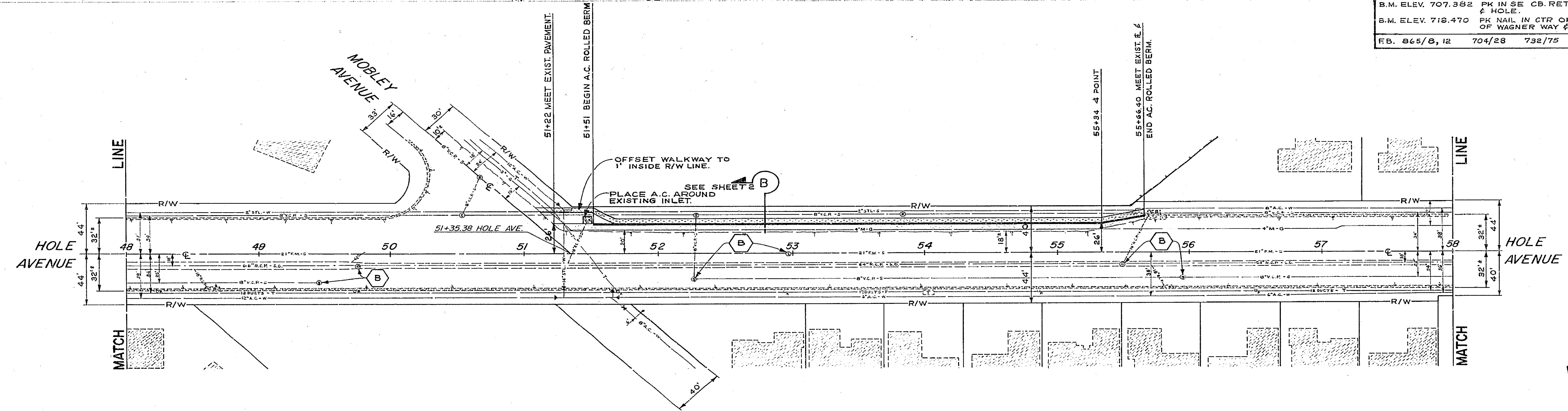
PROJECT NO. 358  
**R-1327**  
SHEET 4 OF 9

\*AS BUILT 3/23/71 J.P.G.





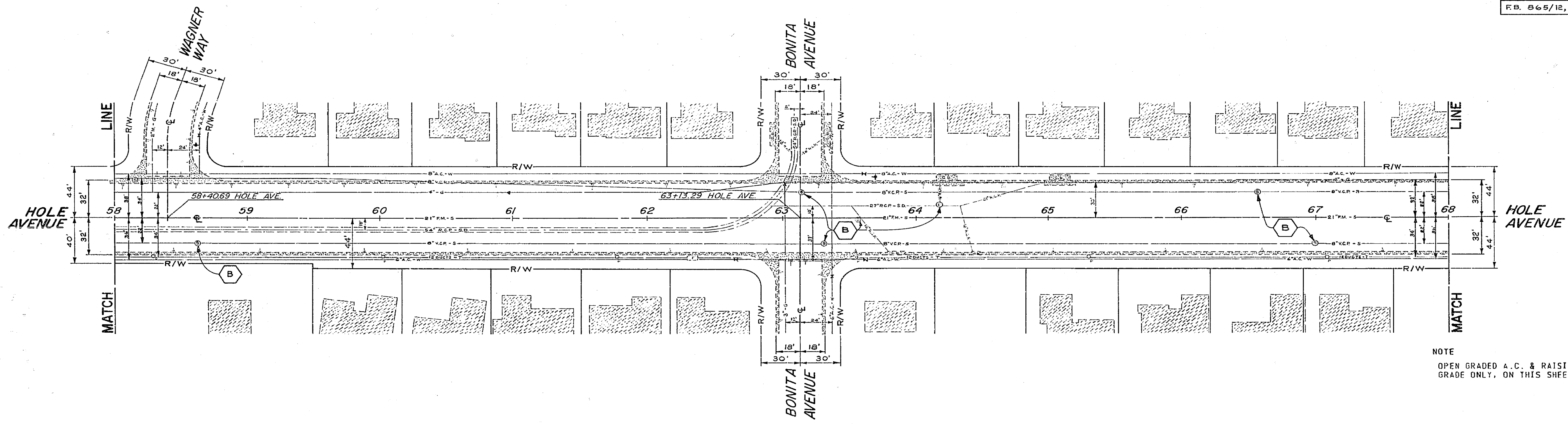
B.M. ELEV. 707.382 PK IN SE CB. RET. COLLETT & HOLEY  
 B.M. ELEV. 718.470 PK NAIL IN CTR OF NE CB. RET. OF WAGNER WAY & HOLEY  
 F.B. 865/B, 12 704/28 732/75



\* AS BUILT 3/23/71 J.R.G.

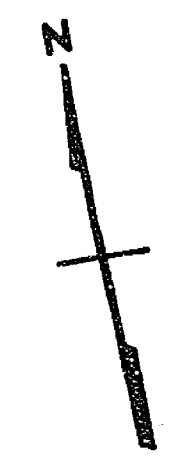
<p><b>- CAUTION -</b>  <b>PACIFIC TELEPHONE</b>  <b>CABLES UNDERGROUND</b>  <b>BEFORE EXCAVATING</b>  <b>CALL COLLECT:</b>          After Hours          &amp; Holidays          Orange County 714-633-0811 714-547-6606          Riverside County 714-684-0071 714-547-6606</p>	<p>CITY OF RIVERSIDE, CALIFORNIA          DEPARTMENT OF PUBLIC WORKS</p>	<p><b>HOLE AVE WIDENING</b></p>	<p>PROJECT NO. 358</p>
	<p>APPROVED BY          OFFICE ENGINEER          TRAFFIC DIVISION          ASSISTANT CITY ENG.</p>	<p>APPROVED BY          DIRECTOR OF PUBLIC WORKS</p>	<p>PLAN &amp; PROFILE          COLLETT, MOBLEY &amp; WAGNER</p>
<p>DESIGNED BY: <i>[Signature]</i> DRAWN BY: GOLZ CHECKED BY: DCA</p>	<p>DATE: 6-11-70</p>	<p>HORIZ. SCALE: 1" = 40'          VERT. SCALE: 1" = 2'</p>	

B.M. ELEV. 718.470 "PK" NAIL IN CTR. OF N.E. CB. RET. OF WAGNER WAY & HOLE AVE.  
 B.M. ELEV. 729.812 "PK" NAIL IN CTR. OF SW CB. RET. OF PENDLETON ST. & HOLE AVE.  
 F.B. 865/12, 16,



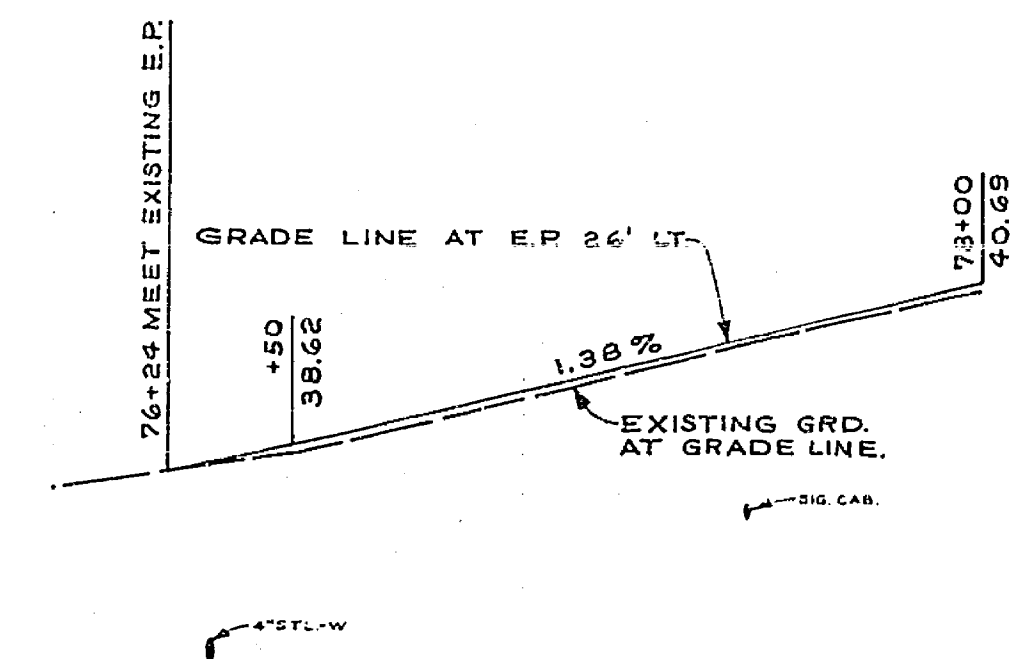
NOTE  
 OPEN GRADED A.C. & RAISING MANHOLES TO GRADE ONLY, ON THIS SHEET.

\* AS BUILT 3/23/71 J.R.G.



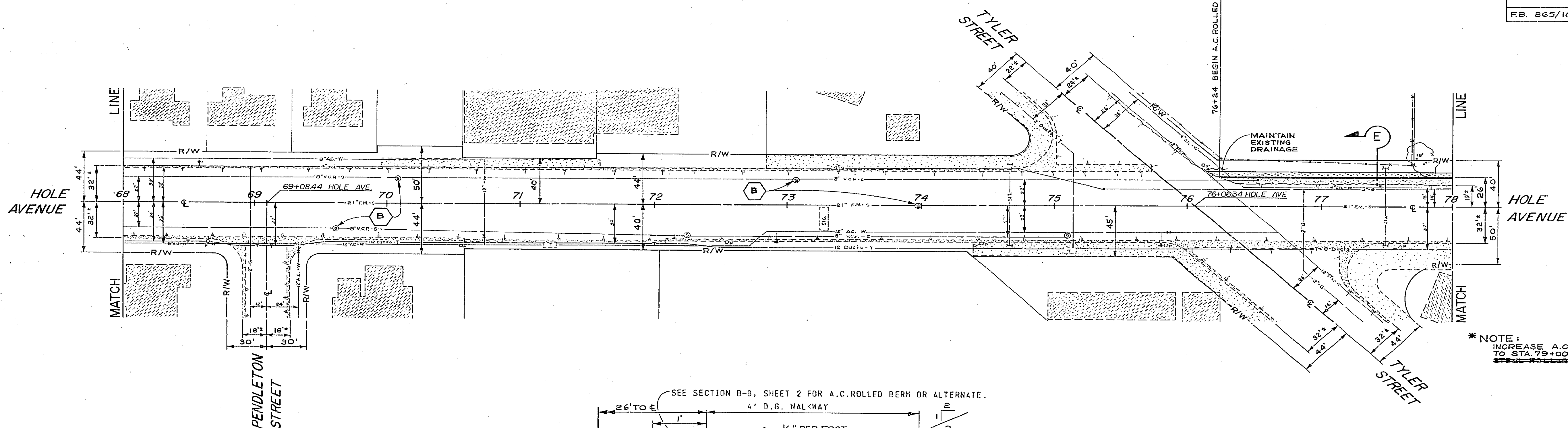
<p><b>- CAUTION -</b>  <b>PACIFIC TELEPHONE</b>  <b>CABLES UNDERGROUND</b>  <b>BEFORE EXCAVATING</b>  <b>CALL COLLECT:</b>      7:30 A.M. to 5 P.M. &amp; Holidays      Orange County 714-932-0811 714-947-0506      Riverside County 714-984-0271 714-947-0508</p>	<p>CITY OF RIVERSIDE, CALIFORNIA          DEPARTMENT OF PUBLIC WORKS</p>		<p><b>HOLE AVE WIDENING</b></p>		<p>PROJECT NO. 358</p>
	<p>APPROVED BY: [Signature]          OFFICE ENGINEER: [Signature]          TRAFFIC DIVISION: [Signature]          ASSISTANT CITY ENGINEER: [Signature]</p>	<p>DATE: 6-11-70</p>	<p>APPROVED BY: [Signature]          DIRECTOR OF PUBLIC WORKS: [Signature]</p>	<p>DATE: 6-11-70</p>	<p><b>R-1327</b></p>
<p>DESIGNED BY: J.G.G. DRAWN BY: J.R.G. CHECKED BY: D.C.H.</p>		<p>HORIZ. SCALE: 1" = 40' VERT. SCALE: 1" = 4'</p>			

740  
739  
738  
737  
736  
735



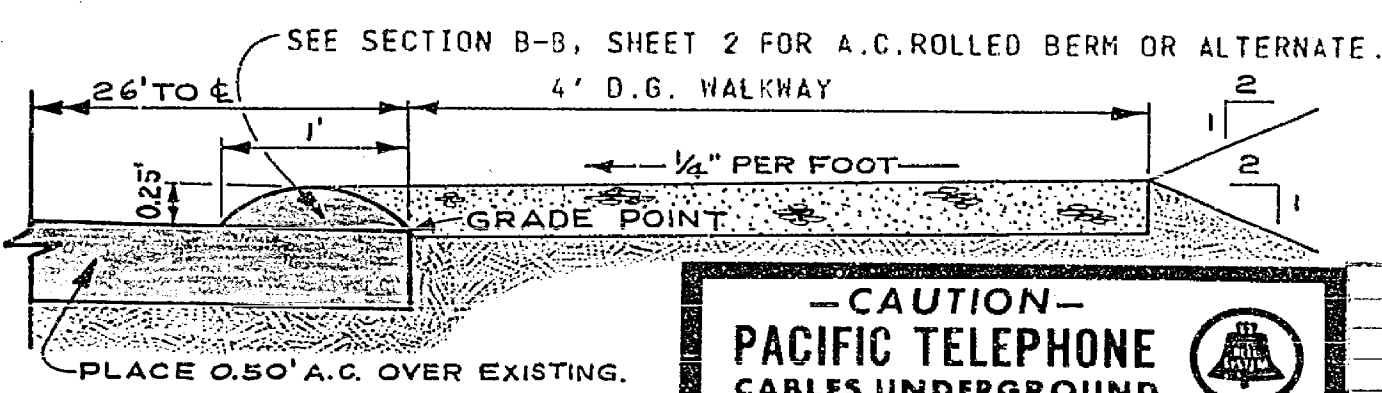
741  
740

B.M. ELEV. 729.812 PK NAIL IN CTR. OF SW. CB. RET. OF PENDLETON ST. & HOLE AVE.  
 B.M. ELEV. 739.133 PK NAIL IN S'WLY CB. OF TYLER ST. APPROX. 175' SLY OF HOLE AVE.  
 F.B. 865/16, 19 732/75, 76



\* NOTE:  
 INCREASE A.C. TO 8" FROM STA. 76+24 TO STA. 79+00.

\* AS BUILT 3/23/71 J.P.G.



SECTION E  
 SCALE 1"=1'

**CAUTION - PACIFIC TELEPHONE CABLES UNDERGROUND BEFORE EXCAVATING**  
 CALL COLLECT  
 After Hours 2 Bellboys  
 Orange County 739 A.M. to 5 P.M. 714-633-0811 714-547-6606  
 Riverside County 714-684-0071 714-547-6606

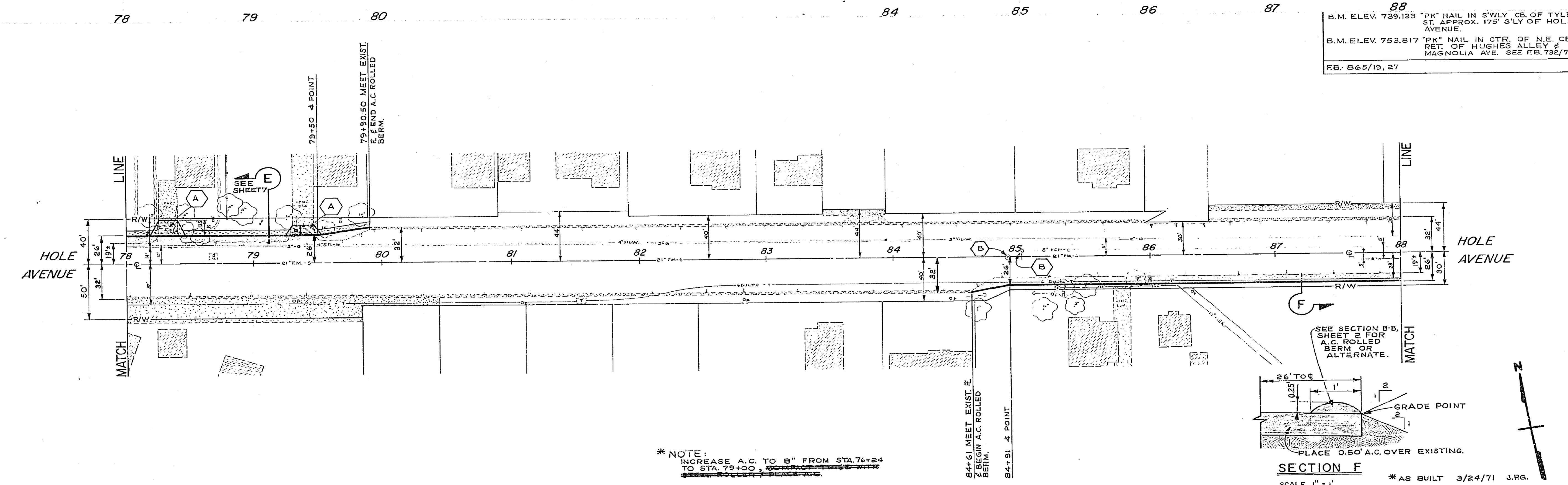
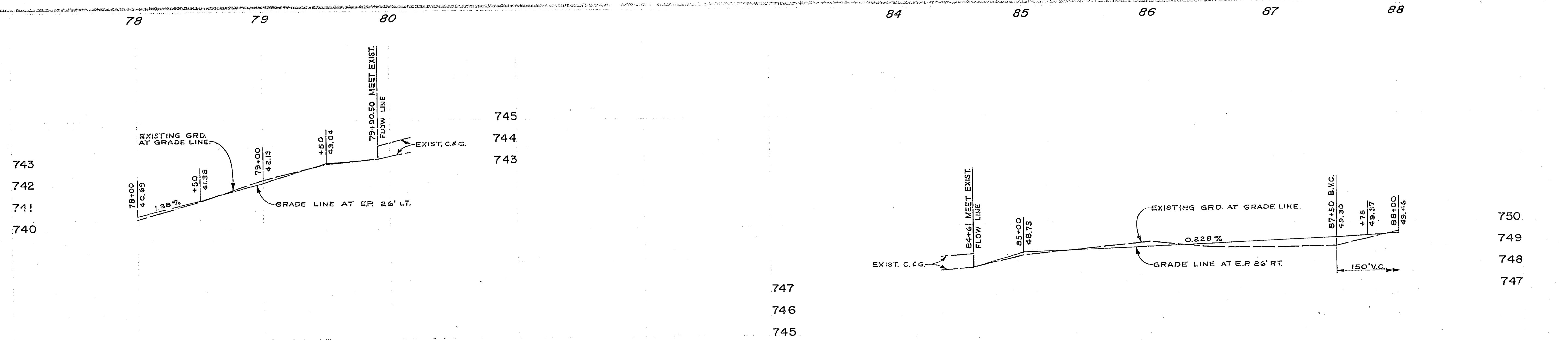
DESIGNED BY	DATE
DRAWN BY	CHECKED BY

CITY OF RIVERSIDE, CALIFORNIA  
 DEPARTMENT OF PUBLIC WORKS  
 APPROVED BY  
 DIRECTOR OF PUBLIC WORKS  
 DATE

**HOLE AVE WIDENING**  
**PLAN & PROFILE**  
**PENDLETON & TYLER**  
 HORIZ. SCALE: 1" = 40' VERT. SCALE: 1" = 2'

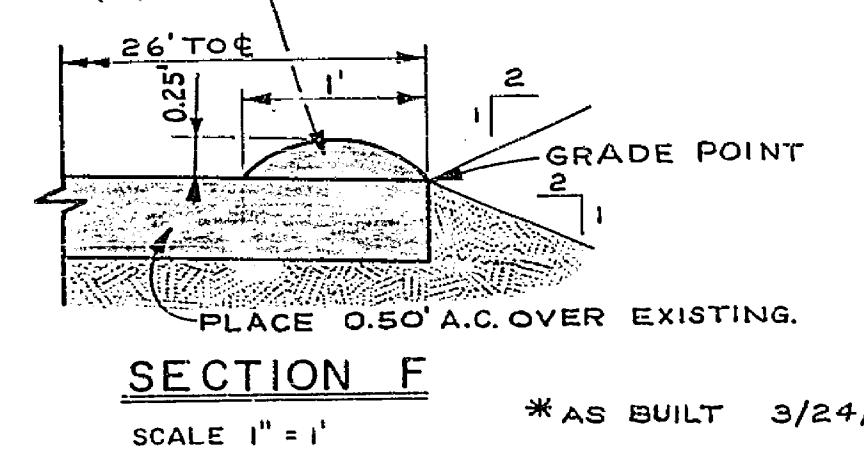
PROJECT NO. 358  
**R-1327**  
 SHEET 7 OF 9





88  
 B.M. ELEV. 739.133 "PK" NAIL IN S'WLY CB. OF TYLER ST. APPROX. 175' S'LY OF HOLE AVENUE.  
 B.M. ELEV. 753.817 "PK" NAIL IN CTR. OF N.E. CB. RET. OF HUGHES ALLEY & MAGNOLIA AVE. SEE FB. 732/76  
 FB. 865/19, 27

\* NOTE:  
 INCREASE A.C. TO 8" FROM STA. 76+24 TO STA. 79+00.



**-CAUTION-**  
**PACIFIC TELEPHONE**  
**CABLES UNDERGROUND**  
**BEFORE EXCAVATING**  
**CALL COLLECT**

CITY OF RIVERSIDE, CALIFORNIA  
 DEPARTMENT OF PUBLIC WORKS

PROJECT NO. 358  
**HOLE AVE WIDENING**  
**R-1327**

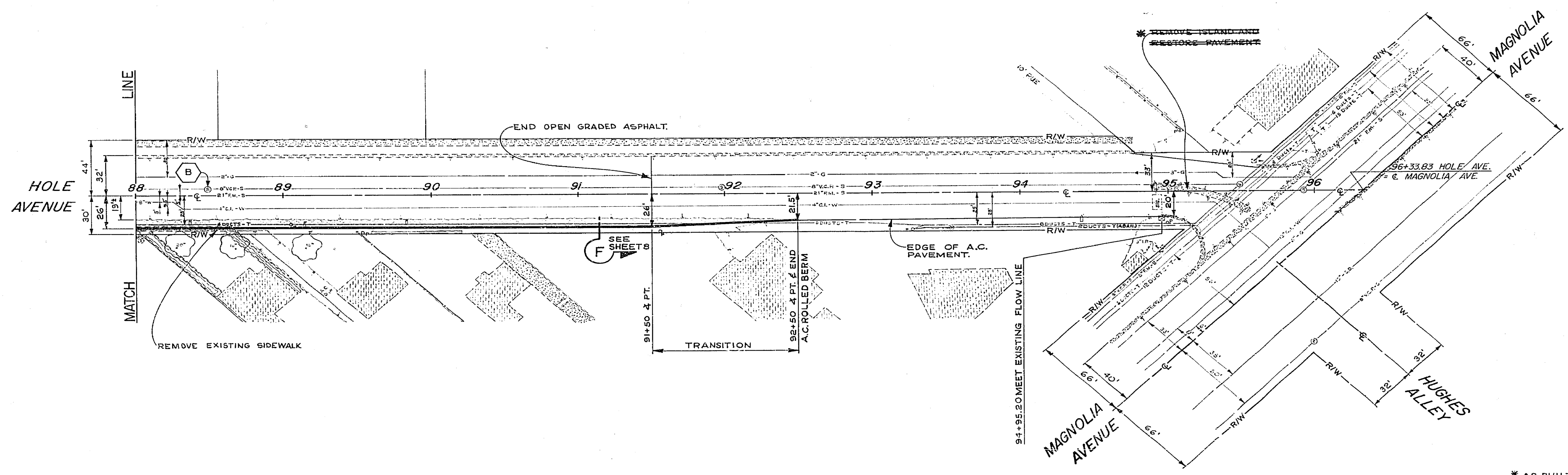
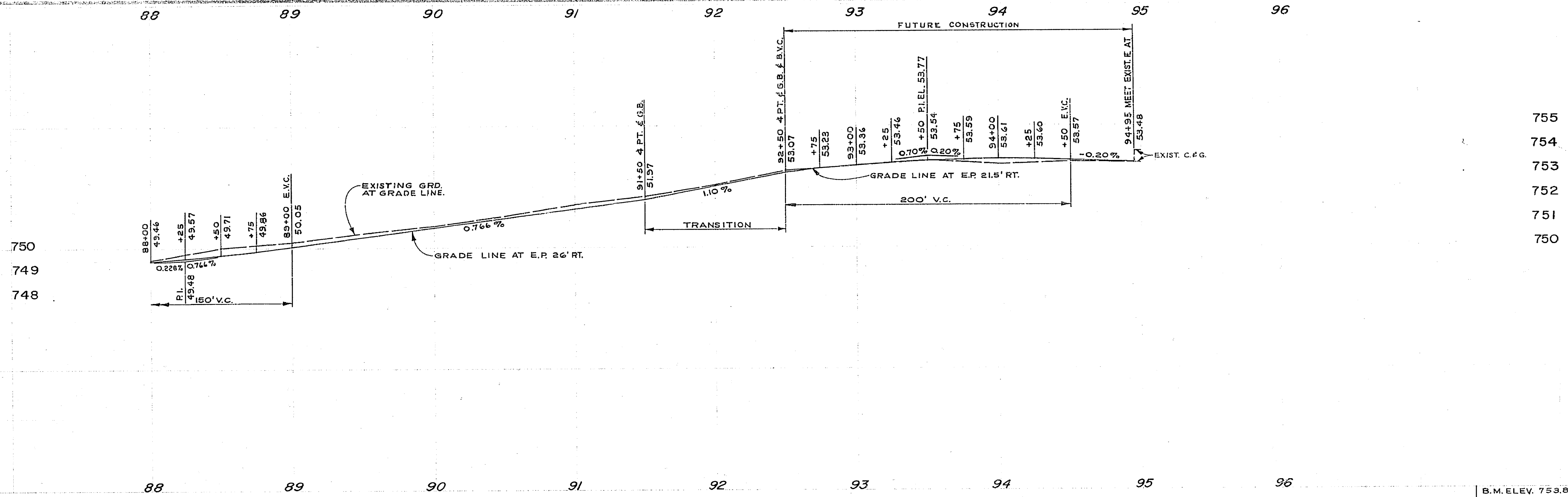
APPROVED BY: [Signature]  
 DATE: 5-11-70

APPROVED BY: [Signature]  
 DATE: 5-11-70  
 SHEET 8 OF 9

DESIGNED BY: [Signature] DRAWN BY: [Signature] CHECKED BY: DCH

HORIZ. SCALE: 1" = 40' VERT. SCALE: 1" = 2'





B.M. ELEV. 753.817 "PK" NAIL IN CTR OF N.E. CB. RET. OF HUGHES ALLEY & MAGNOLIA AVENUE. SEE FB. 732/76  
 F.B. 865/27

\* AS BUILT 3/24/71 J.P.G.

<b>CAUTION</b> PACIFIC TELEPHONE CABLES UNDERGROUND BEFORE EXCAVATING CALL COLLECT: 730 A.M. to 5 P.M. Alter Hours & Holidays Orange County 714-633-0811 714-547-6004 Riverside County 714-954-0071 714-547-5908	CITY OF RIVERSIDE, CALIFORNIA DEPARTMENT OF PUBLIC WORKS		<b>HOLE AVE WIDENING</b> PLAN & PROFILE STA. 88+00 TO MAGNOLIA		PROJECT NO. 358 <b>R-1327</b> SHEET 9 OF 9
	APPROVED BY: [Signature] TRAFFIC DIVISION ASSISTANT CITY ENGINEER	APPROVED BY: [Signature] DIRECTOR OF PUBLIC WORKS	DATE: 6-11-70	HORIZ. SCALE: 1" = 40' VERT. SCALE: 1" = 2'	