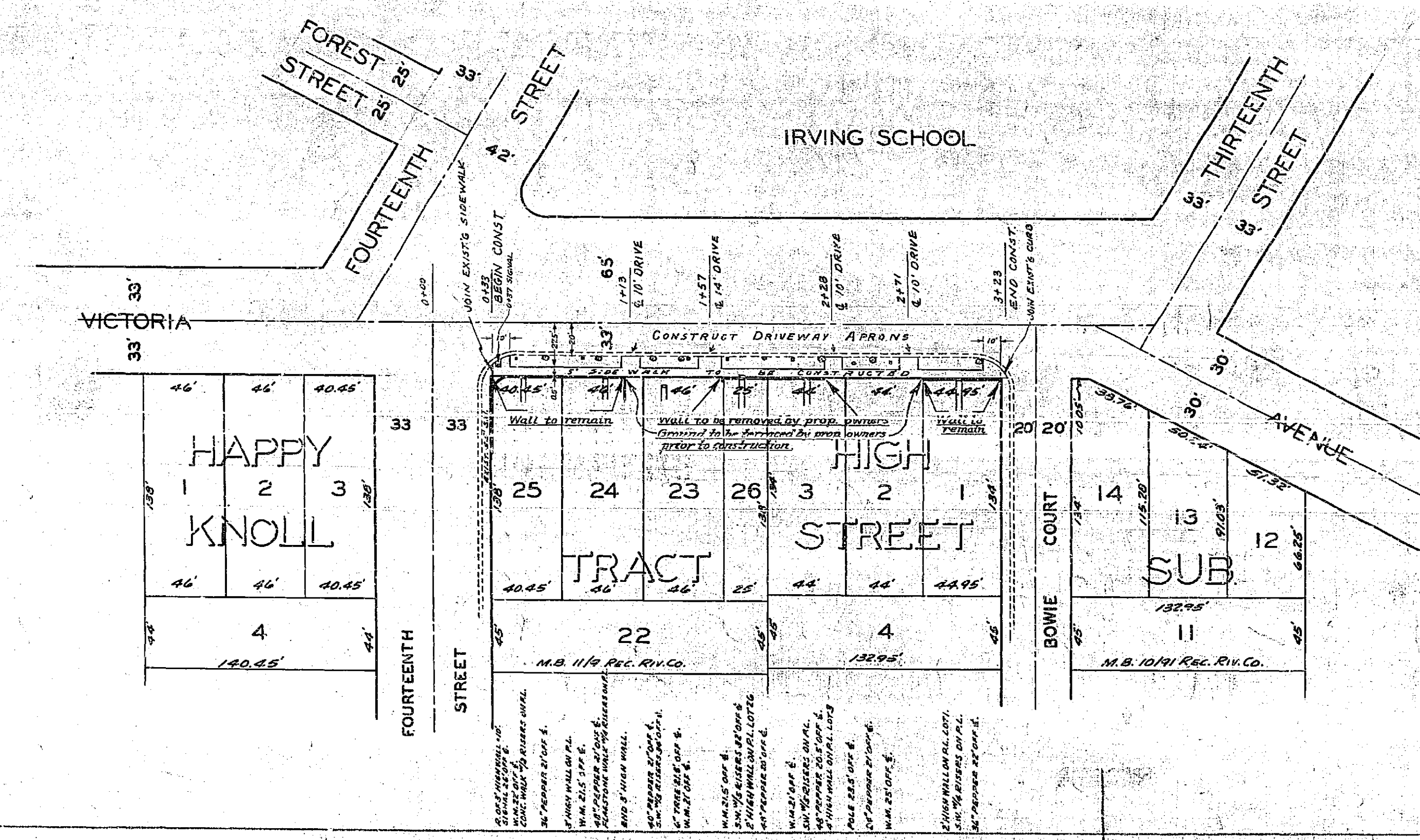


PROFILE

DATE	DESCRIPTION

B.M. ELEV. 900.82', PK. IN E'LY CB. VICTORIA  
 9' NLY OF C. OF 13 TH ST.  
 F.B. 603/47



NOTE: 1. Contractor to remove portion of steps protruding into R/W in front of Lot 26.  
 2. Property owners to join existing steps to new sidewalk.

REVISIONS			CITY OF RIVERSIDE CALIFORNIA DEPARTMENT OF PUBLIC WORKS	
MARK	DATE	DESCRIPTION	VICTORIA AVENUE SIDEWALK IMPROVEMENT DISTRICT BETWEEN BOWIE CT. & FOURTEENTH ST.	

DESIGNED BY B.H.	CHECKED BY <i>[Signature]</i>	APPROVED BY <i>[Signature]</i>	<b>R-133</b>
DRAWN BY B.L.	ASSISTANT CITY ENGINEER	DIRECTOR OF PUBLIC WORKS	
DATE <i>June 27, 1957</i>		SHEET 1 OF 1	