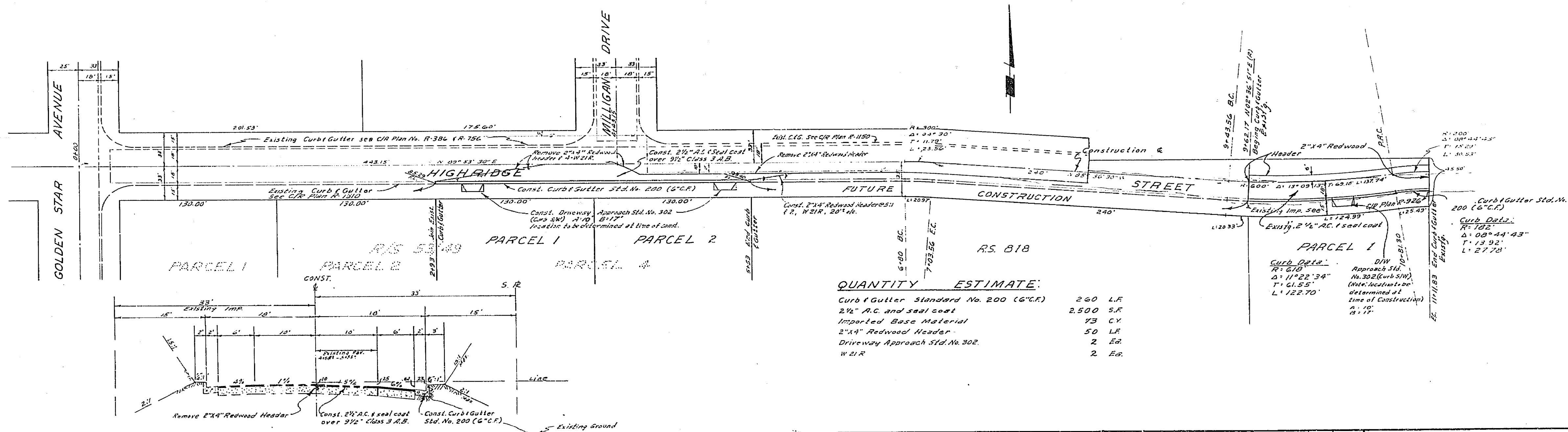


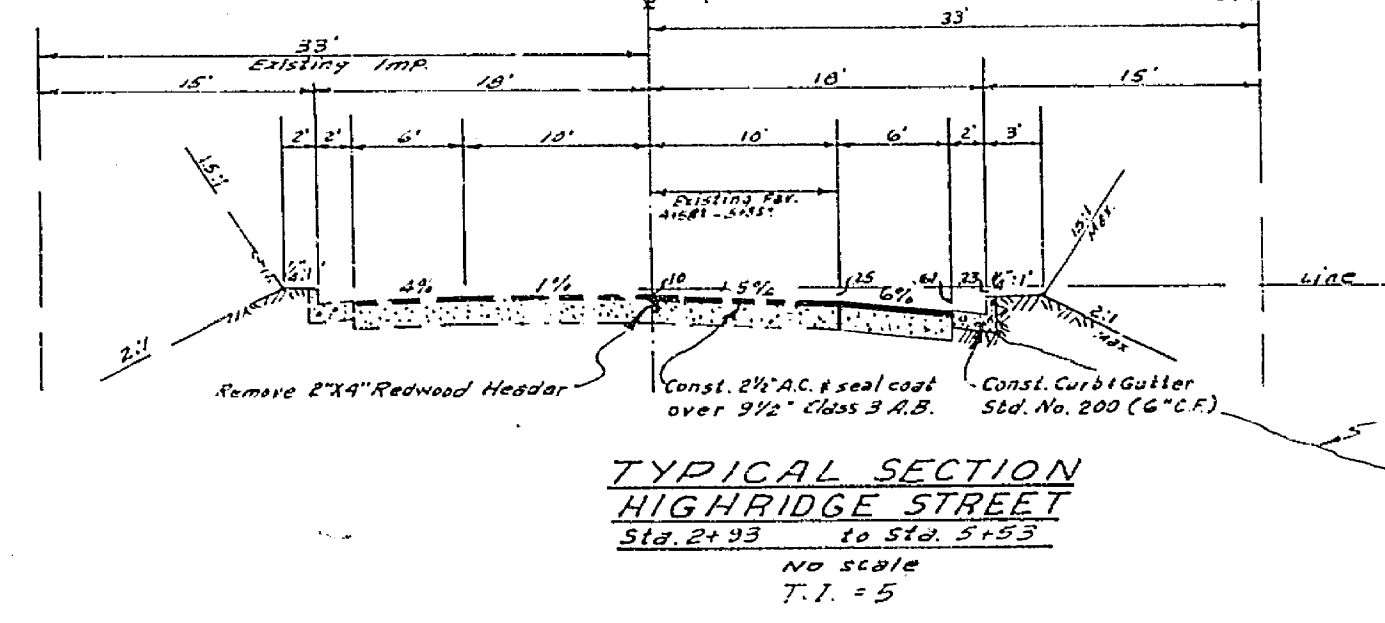
BENCH MARK: Elev. 1170.00, FB 25313  
 Top of 18" IR in capped Man. Intersection Bradley & Golden Star.

- GENERAL NOTES:**
- It shall be the responsibility of the contractor to clear the right of way in accordance with the provisions of law as it affects each utility including irrigation lines and appurtenances and at no cost to the City.
  - Construction shall be in accordance with the City of Riverside, Department of Public Works, Specifications No. 461 and Standard Drawings.
  - Prime coat, seal coat, and paint binder are required.
  - Grading will require a permit under Ordinance 3093 for a cut or fill exceeding 100 cubic yards, or a fill over one foot in depth.
  - The Subdivider shall arrange for a soil test to be made by a soils Engineer after the street has been prepared to rough grade. Depth of base material shall be determined by City of Riverside design standards and test procedures.
  - NOTICE TO CONTRACTOR:** The existence and location of any underground utility pipes or structures shown on these plans are obtained by record of the available records. To the best of our knowledge, there are no existing utilities except as shown on these plans. The Contractor is required to take the precautionary measures to protect the utility lines shown and any other lines not at record or not shown on these plans.



**QUANTITY ESTIMATE:**

Curb & Gutter Standard No. 200 (6" C.R.)	200 LF
2 1/2" A.C. and seal coat	2500 SF
Imported Base Material	73 CY
2" x 4" Redwood Header	50 LF
Driveway Approach Std. No. 302	2 EA
W 21 R	2 EA



<b>ALBERT A. WEBB ASSOCIATES</b> CIVIL ENGINEERS RIVERSIDE, CALIFORNIA APPROVED BY: <i>[Signature]</i> DATE: 1-29-69 R.E. No. 2876 W.O. 24-121 FOR: George Muhl F.B. 593	CITY OF RIVERSIDE, CALIFORNIA DEPARTMENT OF PUBLIC WORKS APPROVED BY: <i>[Signature]</i> DATE: 3-12-69 PARK DEPARTMENT TRAFFIC DIVISION ASSISTANT CITY ENGINEER	<b>STREET PLAN &amp; PROFILE</b> <b>HIGHRIDGE STREET</b> South side 293' to 553' East of Golden Star R/S No. 1053 HORIZ. SCALE: 1" = 50' VERT. SCALE: 1" = 5'	PROJECT NO. <b>R-1337</b> SHEET 1 OF 1 FILE NO. 69-21-A
		DESIGNED BY: BEL DRAWN BY: BEL CHECKED BY: AW	