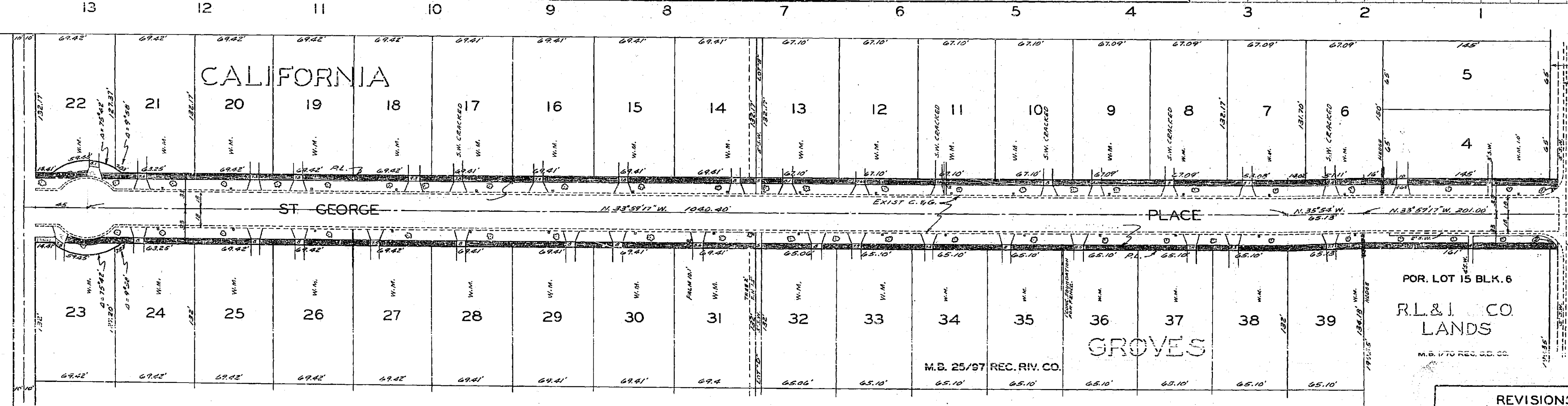
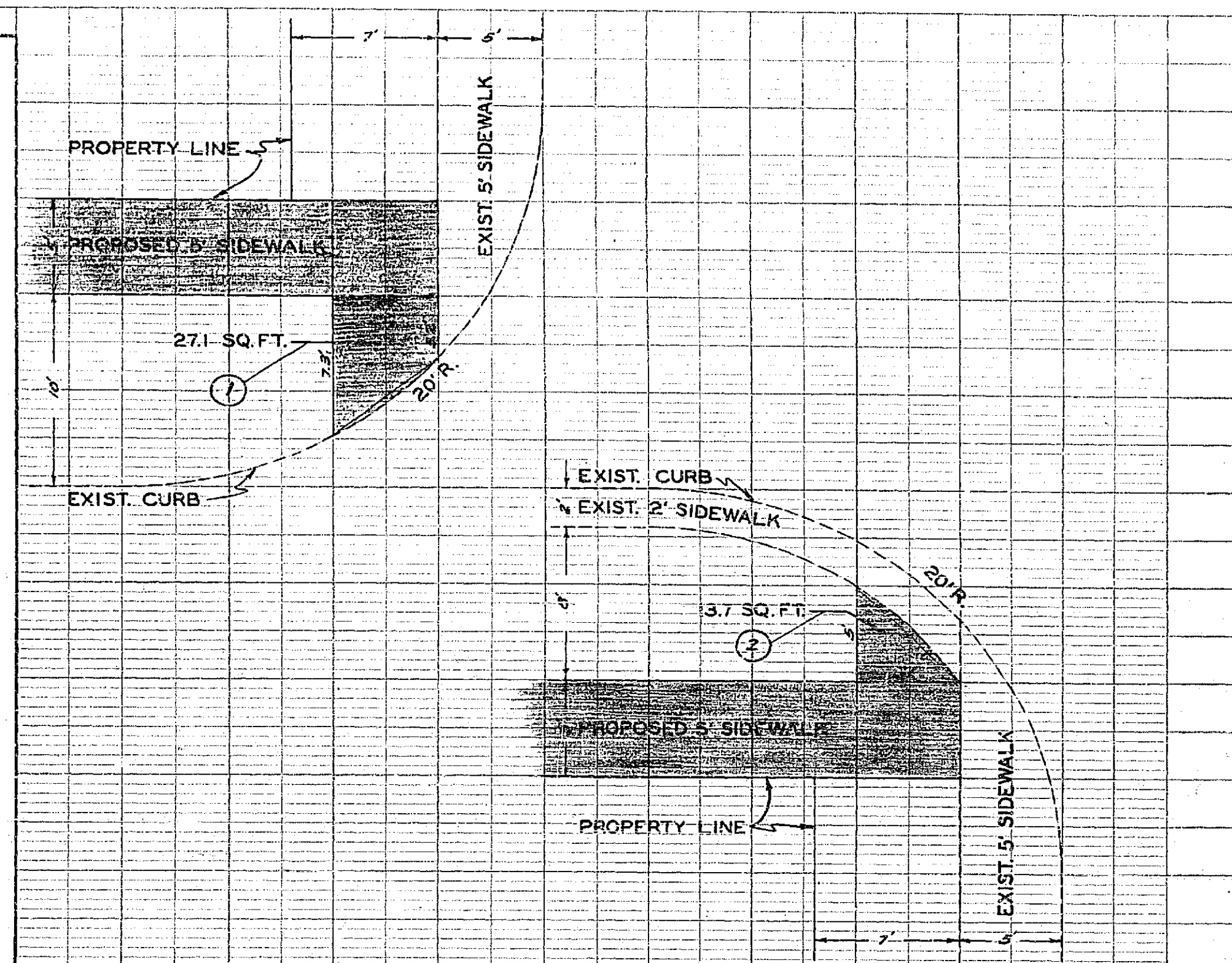
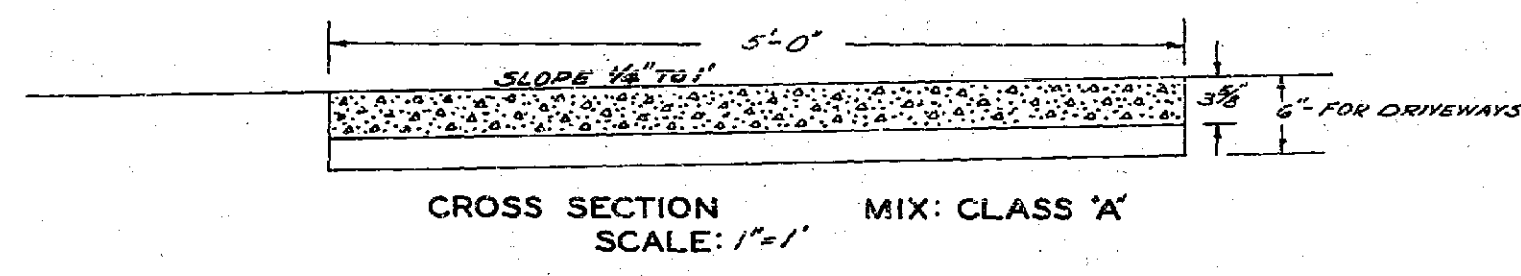
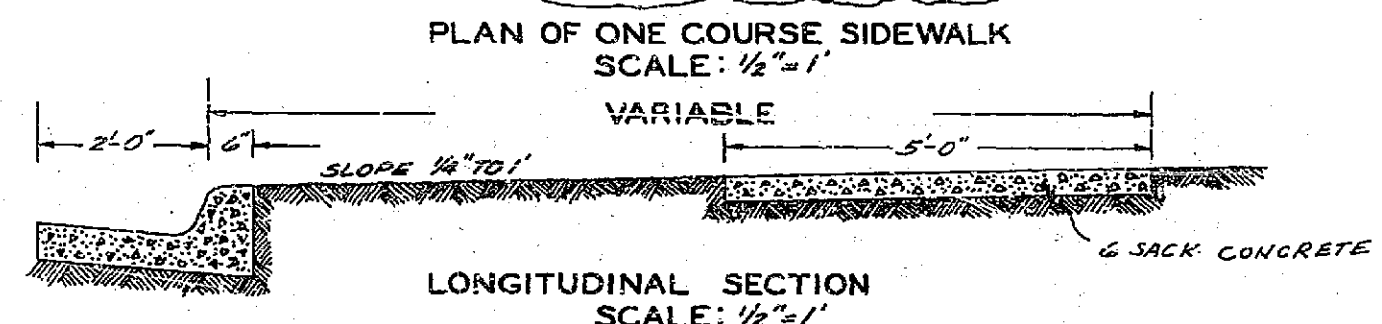
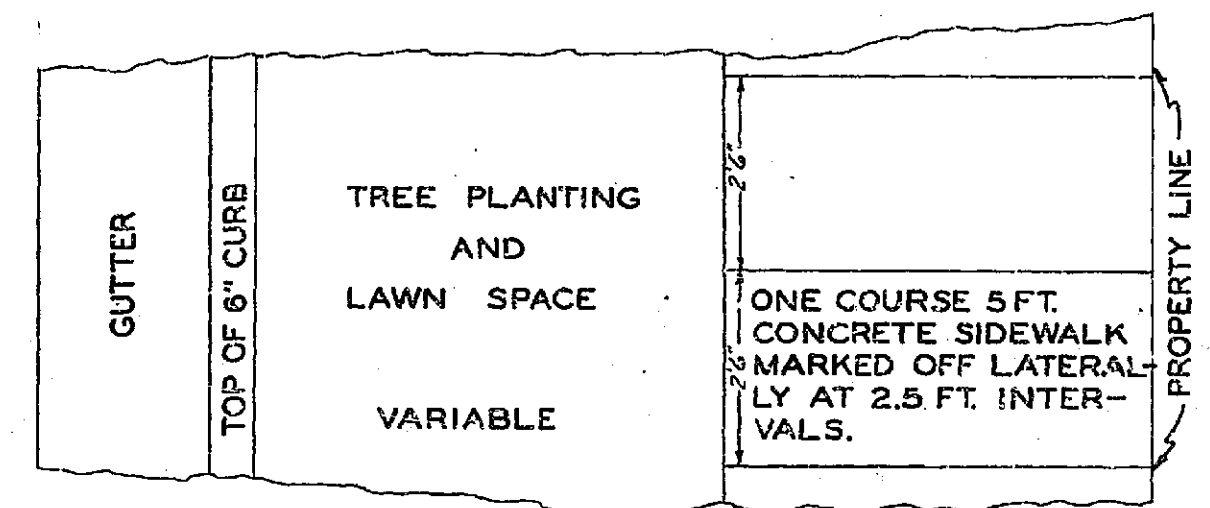


PLAN OF ONE COURSE SIDEWALK



CONTRACTOR TO REMOVE TREES, HEDGES, ETC. WITHIN THE RIGHT OF WAY THAT WILL INTERFERE WITH SIDEWALK CONSTRUCTION.  
TREES ARE 5.5' AND WATER METERS ARE 15' FROM CURB FACE UNLESS OTHERWISE INDICATED.  
GRADE WILL BE SET TO MEET EXISTING DRIVEWAYS IN FIELD.  
DRIVEWAYS HAVE 5 FT. PROPERTY LINE SIDEWALK.  
CITY WATER DEPT. TO RELOCATE WATER METERS IN FRONT OF LOTS 22 & 23.

REVISIONS		CITY OF RIVERSIDE CALIFORNIA DEPARTMENT OF PUBLIC WORKS	
MARK	DATE	DESCRIPTION	
DESIGNED BY	BC	CHECKED BY	248
DRAWN BY		APPROVED BY	
RECOMMENDED BY		DIRECTOR OF PUBLIC WORKS	R-134
		ASSISTANT CITY ENGINEER	DATE July 15, 1957
			SHEET 1 OF 1

PROFILE	
NOTE BOOK	
NO.	
FUNCTIONAL DIVISION	

PLAN	
NO.	
DATE	

SCALE: 1"=50'  
F.B. 596-57

