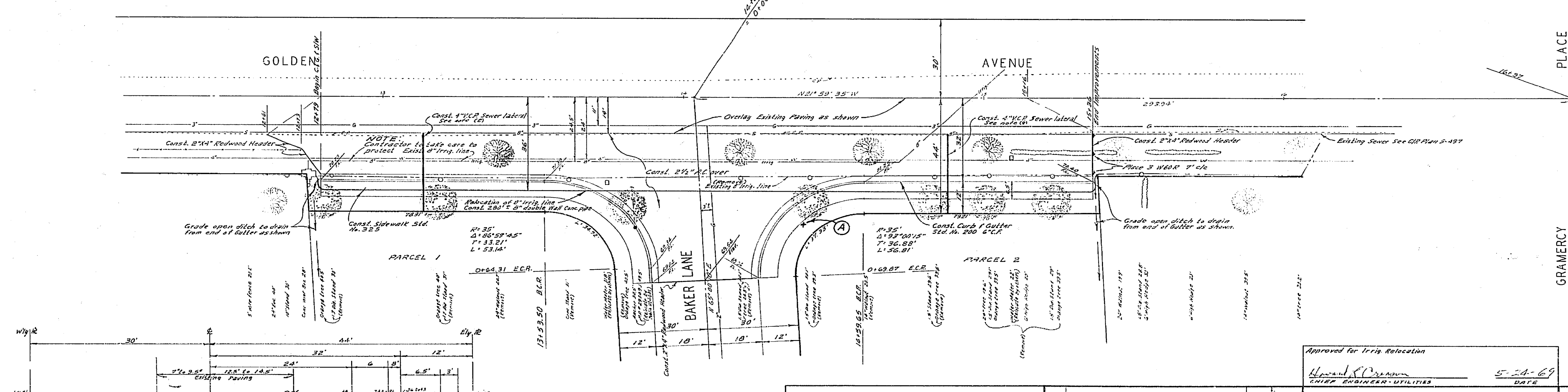


BENCH MARK
 P.C. 1101 in NE corner Golden/Gramercy Place
 Elev. 769.72, C&G P.D. 248 page 41

STREET NAME SCHEDULE	
(A) GOLDEN AVE.	5200
BAKER LN.	11200

- GENERAL NOTES**
- (1) It shall be the responsibility of the contractor to clear the right of way in accordance with the provisions of law as it affects each utility, including irrigation lines and appurtenances, and at no cost to the City.
 - (2) Construction shall be in accordance with the City of Riverside, Department of Public Works, Specifications for 4th and Standard Drawings.
 - (3) Prime coat, seal coat, and paint binder are required.
 - (4) Grading will require a permit under Ordinance 3095 for a cut or fill exceeding 100 cubic yards, or a fill over one foot in depth.
 - (5) The subdivider shall arrange for a soil test to be made by a Soil Engineer after the streets have been prepared to rough grade. Depth of base material and A.C. paving shall be determined by City of Riverside Soilage Standards and Test Procedures.
 - (6) Trim edge of existing pavement, where new paving joins existing pavement, to a clean, straight line. Construct match-up paving as shown and overlay paving as directed in the field to produce a smooth even section.
 - (7) The amount of asphalt overlay on existing pavement has been estimated by the Engineer to be approximately 3.5 cubic yards.
 - (8) Location of Survey Points to be determined in field.



TYPICAL SECTION
 GOLDEN AVENUE
 NO SCALE
 P.T. 17

ALBERT A. WEBB ASSOCIATES
 CIVIL ENGINEERS
 RIVERSIDE, CALIFORNIA
 APPROVED BY: P. A. N. WEBB DATE: 4/1/69
 RE. No. 2822
 W.O. 69-59 FOR: Mr. R.E. Baker F.B. 2004

Approved for Utility Relocation
 Howard C. DeLeon
 CHIEF ENGINEER-UTILITIES
 DATE: 5-24-69

APPROVED BY: [Signature]
 OFFICE ENGINEER
 DATE: 5-24-69

APPROVED BY: [Signature]
 DIRECTOR OF PUBLIC WORKS
 DATE: 6-18-69

CITY OF RIVERSIDE, CALIFORNIA DEPARTMENT OF PUBLIC WORKS		STREET PLAN AND PROFILE		PROJECT NO.
		GOLDEN AVENUE BAKER LANE		R-1352
		R/S NO. 1056		SHEET 1 OF 1
		HORIZ. SCALE: 1" = 20'		FILE NO. 69-59-A