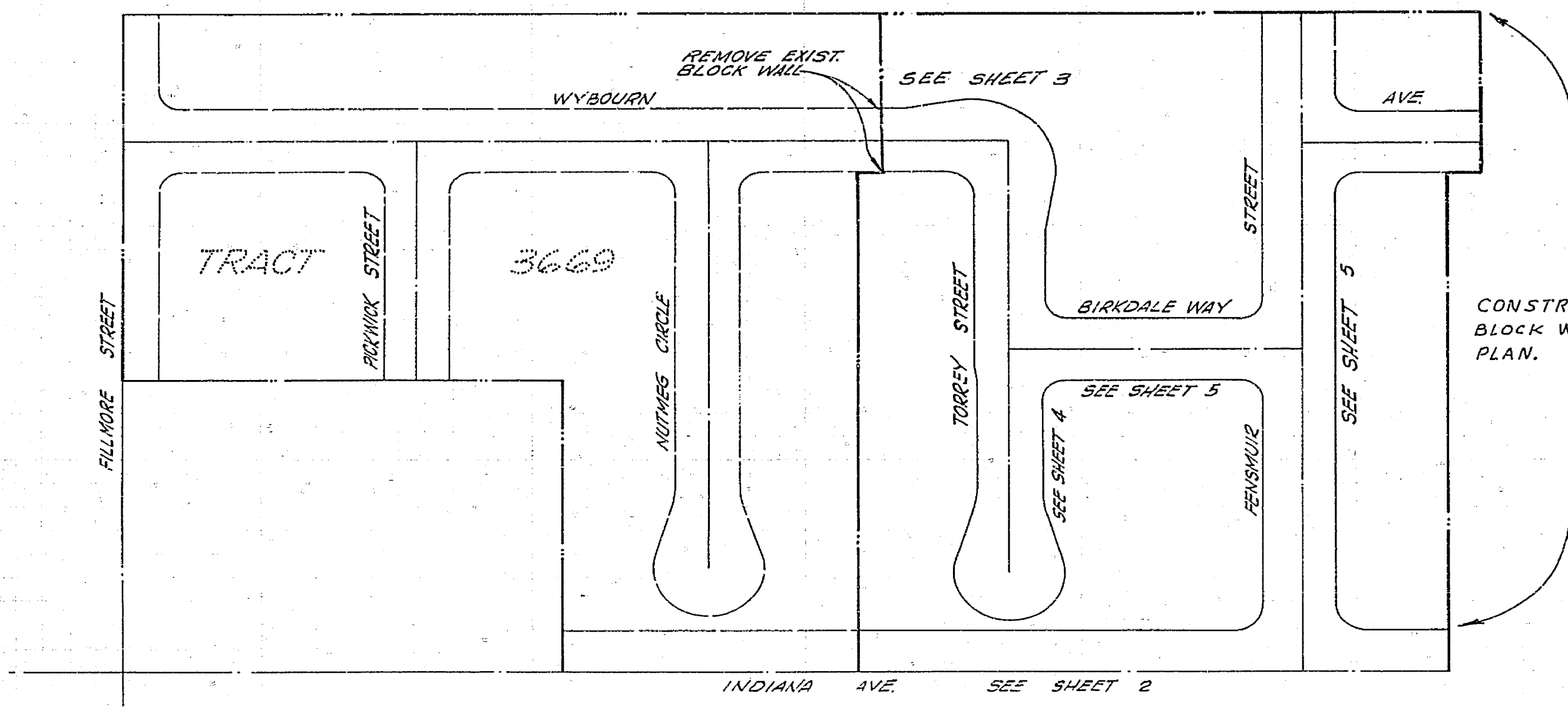


GENERAL NOTES

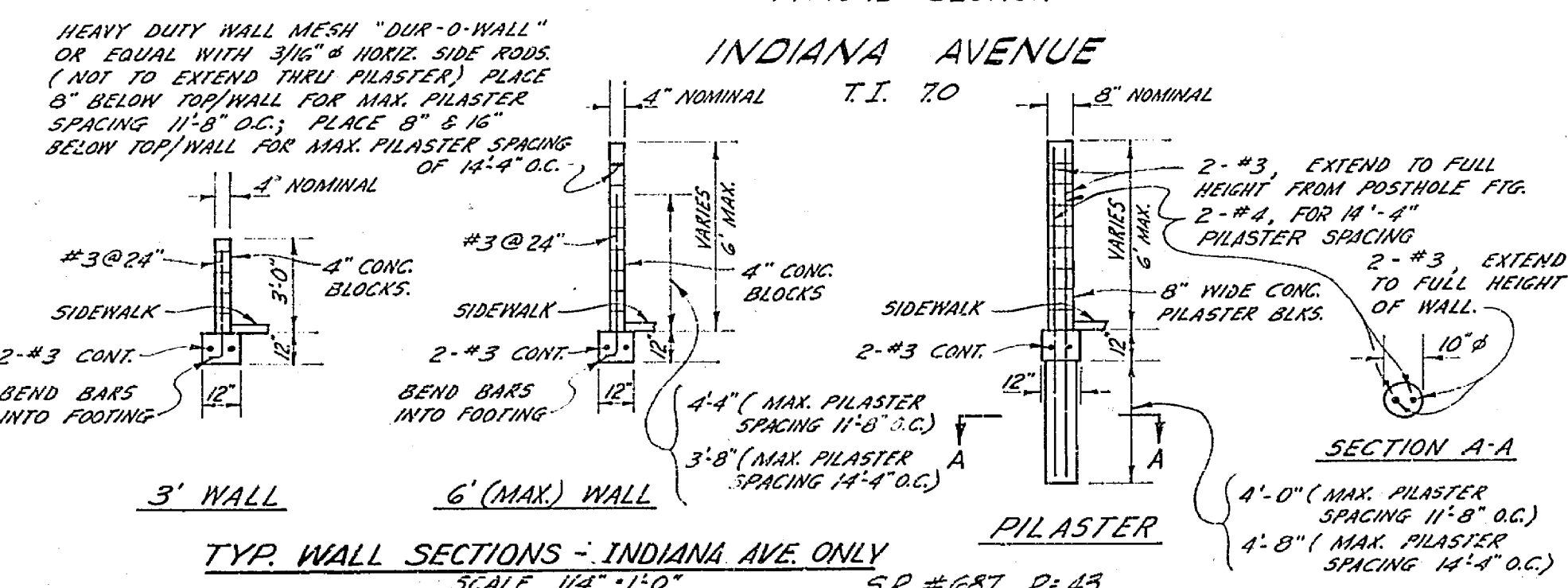
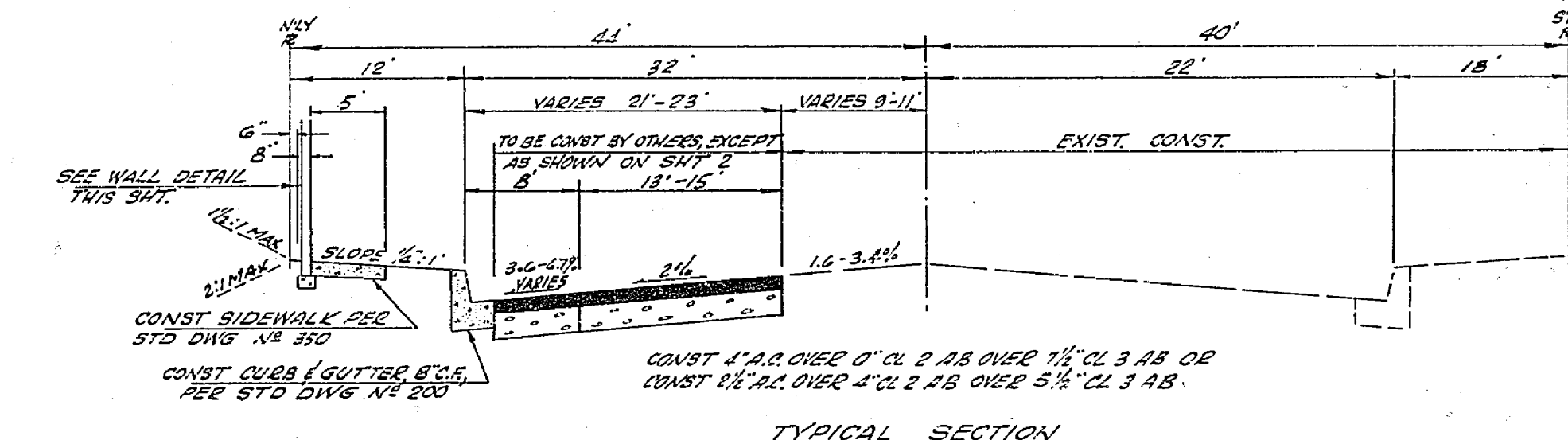
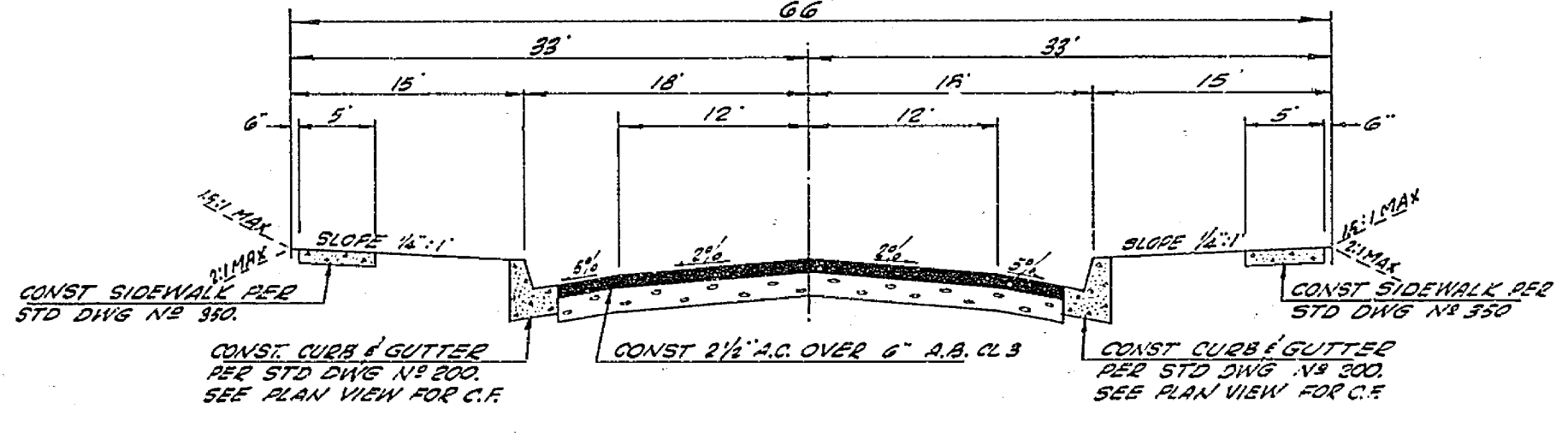
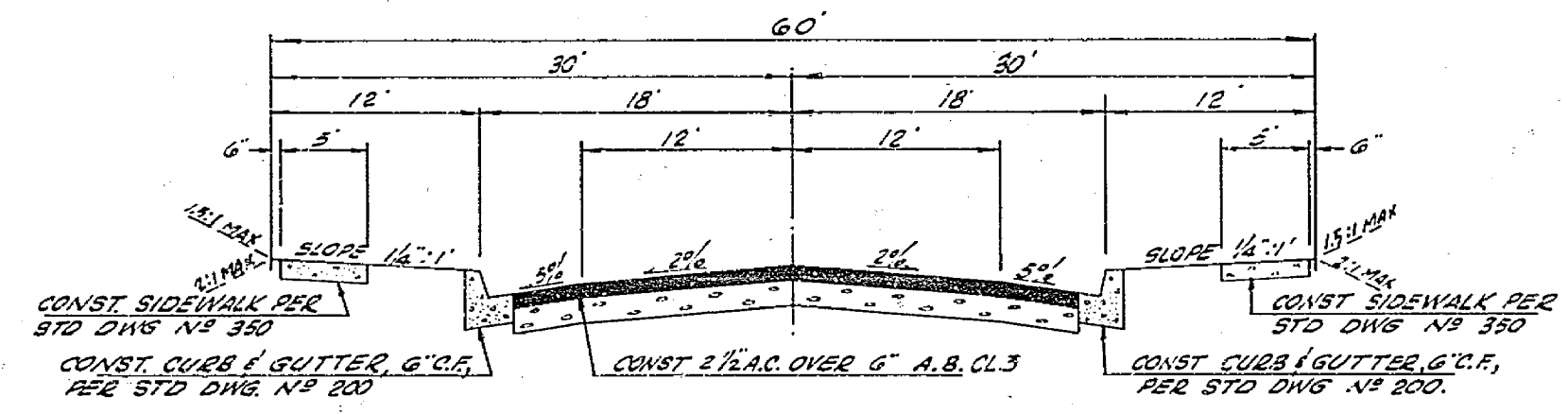
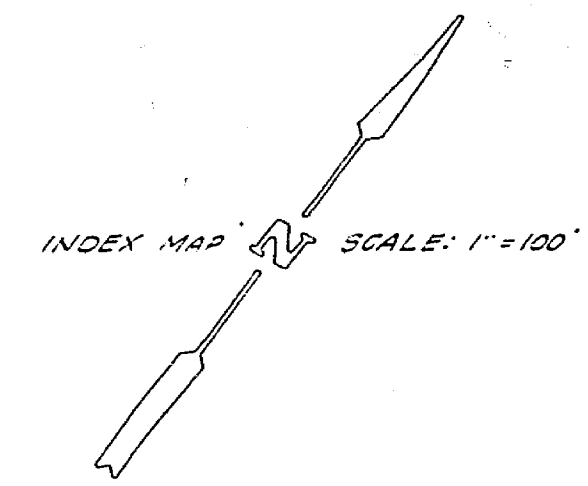
- IT SHALL BE THE RESPONSIBILITY OF THE CONTRACTOR TO CLEAR THE RIGHT OF WAY IN ACCORDANCE WITH THE PROVISIONS OF LAW AS IT AFFECTS EACH UTILITY, INCLUDING IRRIGATION LINES AND APPURTENANCES, AND AT NO COST TO THE CITY.
- CONSTRUCTION SHALL BE IN ACCORDANCE WITH THE CITY OF RIVERSIDE, DEPARTMENT OF PUBLIC WORKS SPECIFICATIONS NO. 461 AND STANDARD DRAWINGS.
- PRIME COAT, SEAL COAT, AND PAINT BINDER ARE REQUIRED.
- GRADING WILL REQUIRE A PERMIT UNDER ORDINANCE 3093 FOR A CUT OR FILL EXCEEDING 100 CUBIC YARDS, OR A FILL OVER ONE FOOT IN DEPTH.
- TRIM EDGE OF EXISTING PAVEMENT, WHERE NEW PAVING JOINS EXISTING PAVEMENT, TO A CLEAN, STRAIGHT LINE. CONSTRUCT MATCH-UP PAVING AS SHOWN AND OVERLAY PAVING AS DIRECTED IN THE FIELD TO PRODUCE A SMOOTH CROWN SECTION.

ITEM	QUANTITY	ESTIMATE
STREET EXCAVATION	11,187	CY
6" CURB & GUTTER	1,919	L.F.
8" CURB & GUTTER	1,904	L.F.
CURB & GUTTER TRIMS 6"-8" C.F.	180	L.F.
CURB ONLY @ X-GUTTER	364	L.F.
CROSS GUTTER	3321	S.F.
SIDEWALK	16,495	S.F.
BARBICADE	12	L.F.
2 1/2" A.C.	57,181	S.F.
6" A.B. CL 2	57,181	S.F.
CONC. DRIVE APPROACHES	5,950	S.F.
BLOCK WALL REMOVAL	66	L.F.
BLOCK WALL 6" H	237	L.F.
BLOCK WALL 12" VARIES 3'-	109	L.F.
TREE REMOVAL	17	EA.
2" A.C.	3730	S.F.
7 1/2" A.B. CL 3	3730	S.F.
REDWOOD HEADER	357	L.F.
14 60# SIGNS	15	EA.
STREET SIGNS	5	EA.
2 1/2" A.C. DITCH	200	S.F.
BLOCK WALL ALONG E'LY TRACT BOUNDARY - SEE GRADING PLAN	758	L.F.



STREET NAME SCHEDULE	
D	WYBOURN AVE 11400
	TORREY ST 3400
E	TORREY ST 3400
F	BIRKDALE WAY 11300
	FENSMUIR ST 3400
G	FENSMUIR ST 3500
	WYBOURN AVE 11300
H	FENSMUIR ST 3400
	INDIANA AVE 11300

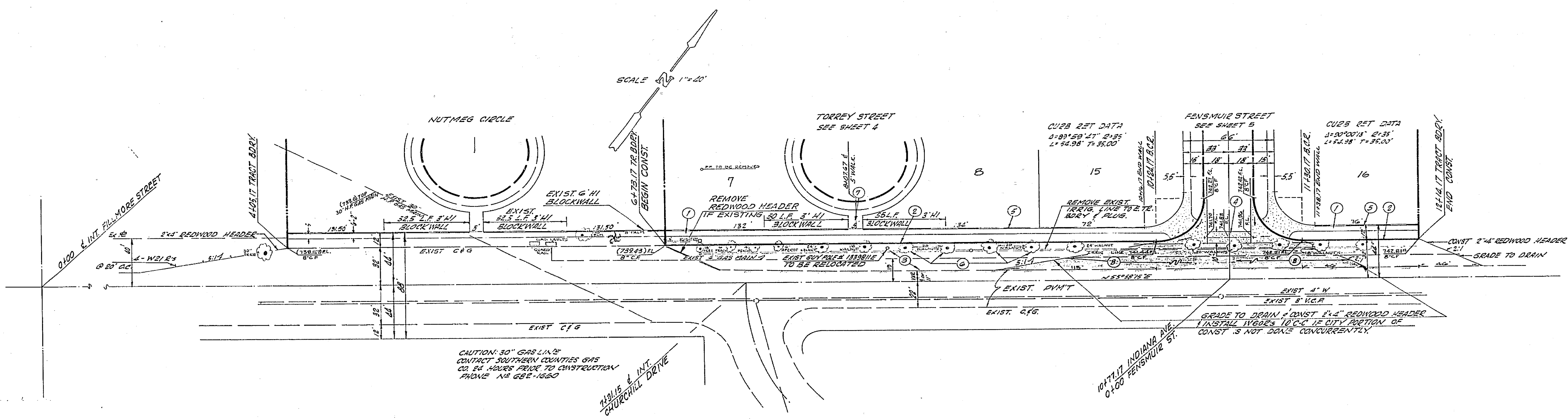
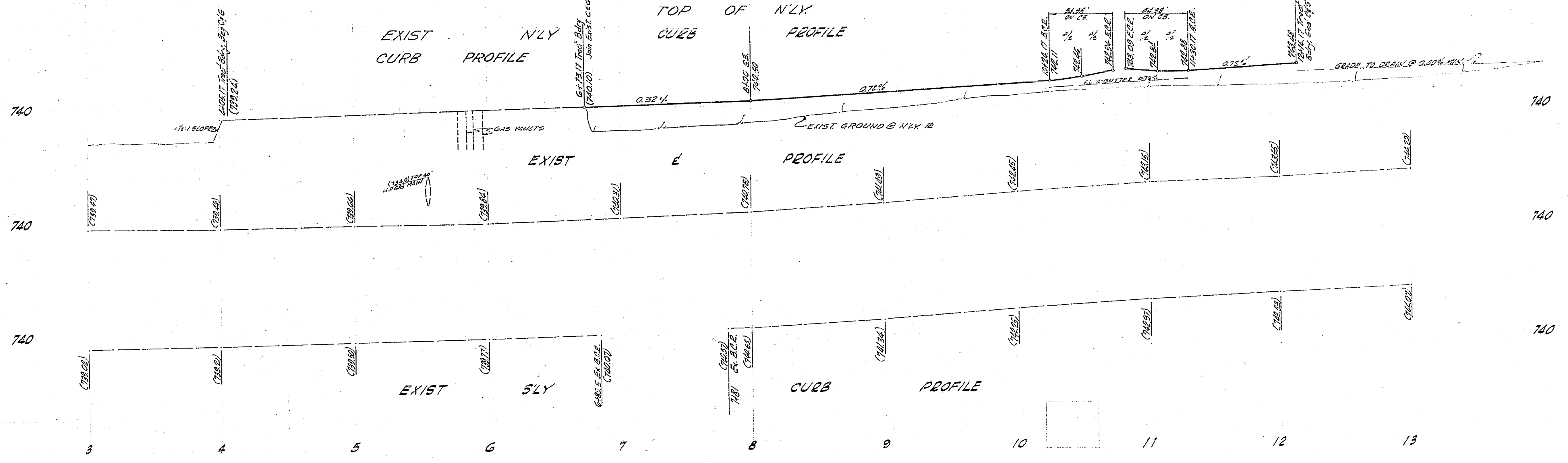
STREET NAME SIGNS SHALL COMPLY WITH STD. DWG. NO. 662



NOTE: See Grading Plan for typical wall sections along E'ly Tract Boundary.

PLANS PREPARED UNDER SUPERVISION OF:	Revised Quantities 11-71 92W	11-57
JACK MATHONEY	DATE: 1-1-69	
JACK MATHONEY R.C.E. 14325		
IN THE OFFICES OF		
WOODRHEIS-TRINDLE-NELSON		
1379A BEACH BLVD		
WESTMINSTER, CALIFORNIA		
DESIGNED BY: J.C.	DRAWN BY: J.C.	CHECKED BY: J.C.

CITY OF RIVERSIDE, CALIFORNIA		TRACT NO 3783		PROJECT NO. 58 360
DEPARTMENT OF PUBLIC WORKS		TITLE SHEET		2-1356
APPROVED BY:	DATE:	APPROVED BY:	DATE:	SHEET 1 OF 5
OFFICE ENGINEER	1-1-69	DIRECTOR OF PUBLIC WORKS	1-1-69	FILE NO.
TRAFFIC DIVISION	6/22			
ASSISTANT CITY ENG.	6/23			
	DATE: 6-23-69			



CAUTION: 30" GAS LINE CONTACT SOUTHERN COUNTIES GAS CO. 24 HOURS PRIOR TO CONSTRUCTION PHONE NO. 682-1550

CONSTRUCTION NOTES

1. CONST. SIDEWALK PER STD. DING. NO. 350.
2. CONST. CURB & GUTTER, 3" C.F. PER STD. DING. NO. 200.
3. A.C. OVER AS TO BE CONST. BY OTHERS, SEE SECTION ON SHT. 1.
4. CONST. CROSS GUTTER & APRON PER STD. DING. NO. 200.
5. CONST. 6" W. BLOCK WALL.
6. REMOVE EXIST. TREES STA. 6+16 TO STA. 12+.
7. CONST. 3" WIDE SIDEWALK PER STD. DING. NO. 350.
8. CONST. 24" DIA. AS PER SECTION ON SHT. 1.

IRRIGATION LINE REMOVAL APPROVED
Howard K. ...
 IRRIGATION CO.

PLANS PREPARED UNDER SUPERVISION OF:
Jack Mahoney DATE: 1-1-69
 JACK MAHONEY, P.E. 12325
 IN THE OFFICES OF
 VORPHEIS-TRINDLE-NELSON
 1578A BEACH BLVD
 WESTMINSTER, CALIFORNIA

CITY OF RIVERSIDE, CALIFORNIA
 DEPARTMENT OF PUBLIC WORKS

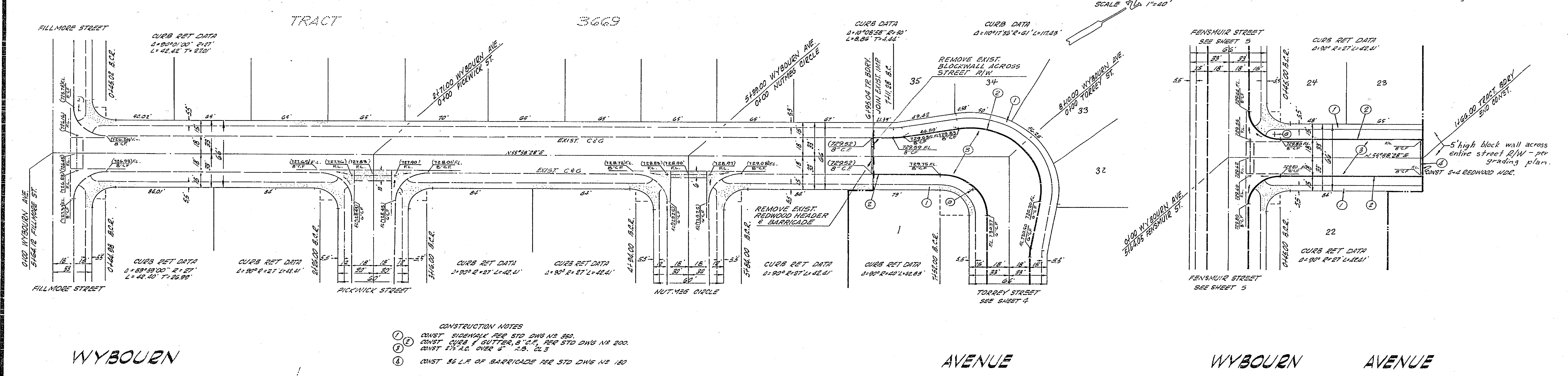
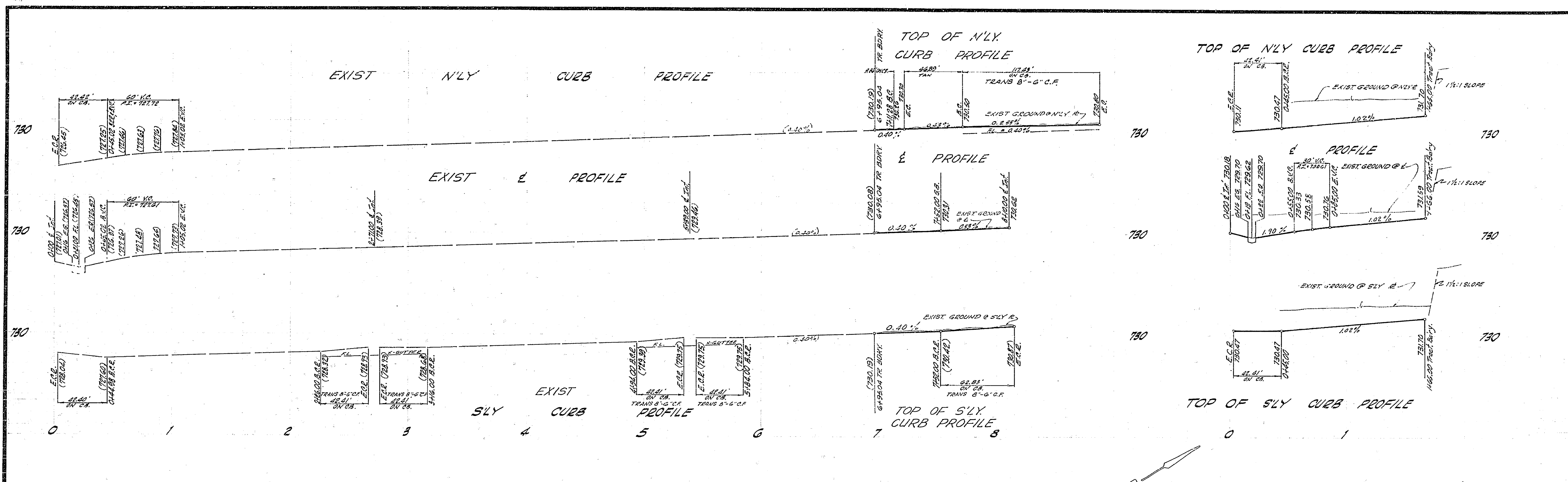
APPROVED BY: *[Signature]* DATE: 6-23-69
 OFFICE ENGINEER
 PARK DEPARTMENT
 TRAFFIC DIVISION
 ASSISTANT CITY ENG.

INDIANA AVENUE
 FROM 6741' NELY 6 13417' NELY
 OF FULLMORE STREET
 TRACT NO. 5783

PROJECT NO. 55 360
 2-1356
 SHEET 2 OF 5
 FILE NO.

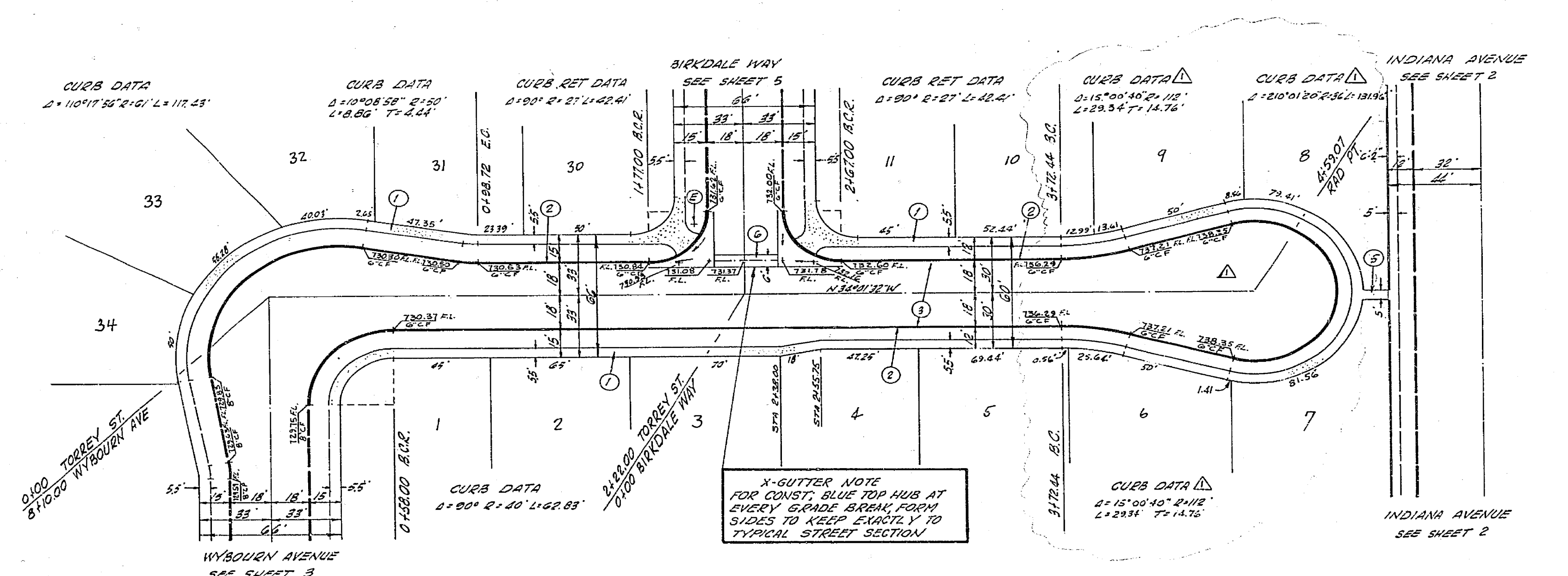
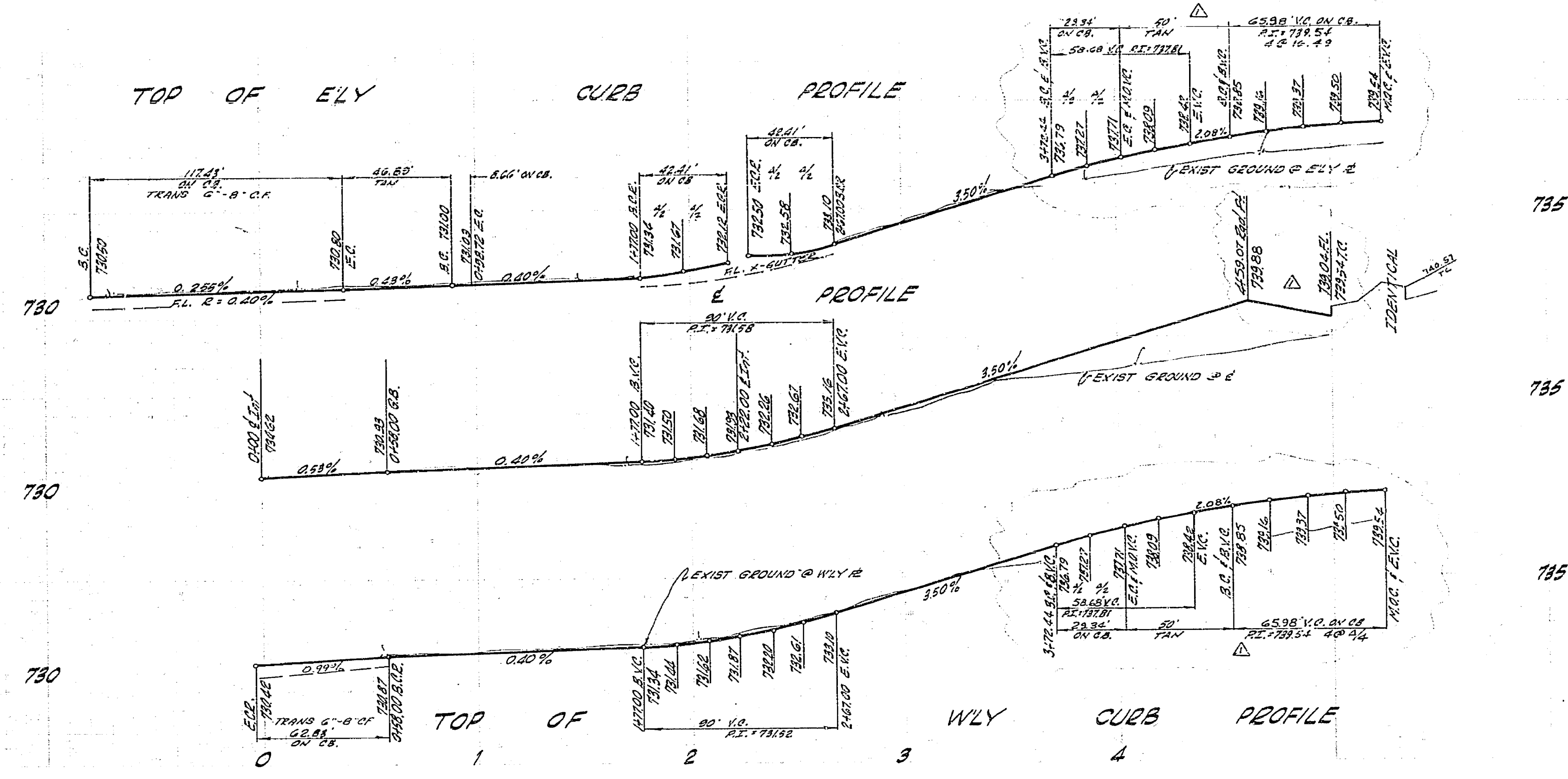
MARK	REVISIONS	APPR.	DATE
DESIGNED BY 36	DRAWN BY 36	CHECKED BY 36	

HORIZ. SCALE: 1" = 40' VERT. SCALE: 1" = 4'



- CONSTRUCTION NOTES
- ① CONST. SIDEWALK PER STD DWG NO 360.
 - ② CONST. CURB & GUTTER, 6" C.F., PER STD DWG NO 200.
 - ③ CONST. 1 1/2" R.C. OVER 5" A.S. CLS
 - ④ CONST. 36" L.F. OF BARRIAGE PER STD DWG NO 180

PLANS PREPARED UNDER SUPERVISION OF <i>Jack Mahoney</i> JACK MAHONEY, P.E. 14325 IN THE OFFICES OF VOORHEIS-TRINDLE-NELSON 13794 BEACH BLVD WESTMINSTER, CALIFORNIA	DATE 1-1-69	CITY OF RIVERSIDE, CALIFORNIA DEPARTMENT OF PUBLIC WORKS	WYBOURN AVENUE STA. 6+95.04 to TORREY ST. FENSUWIR ST. to 165' N.E.S.Y. TRACT NO 3783	PROJECT NO. 58360 R-1356 SHEET 3 OF 5 FILE NO.
DESIGNED BY <i>JL</i> DRAWN BY <i>JL</i> CHECKED BY <i>JL</i>		APPROVED BY <i>[Signature]</i> DATE 1-23-69 OFFICE ENGINEER PARK DEPARTMENT TRAFFIC DIVISION ASSISTANT CITY ENGINEER		APPROVED BY <i>[Signature]</i> DATE 1-23-69 CHIEF OF PUBLIC WORKS
REVISIONS MARK _____ DATE _____		HORIZ. SCALE: 1" = 40' VERT. SCALE: 1" = 4' SCALE 1" = 40'		

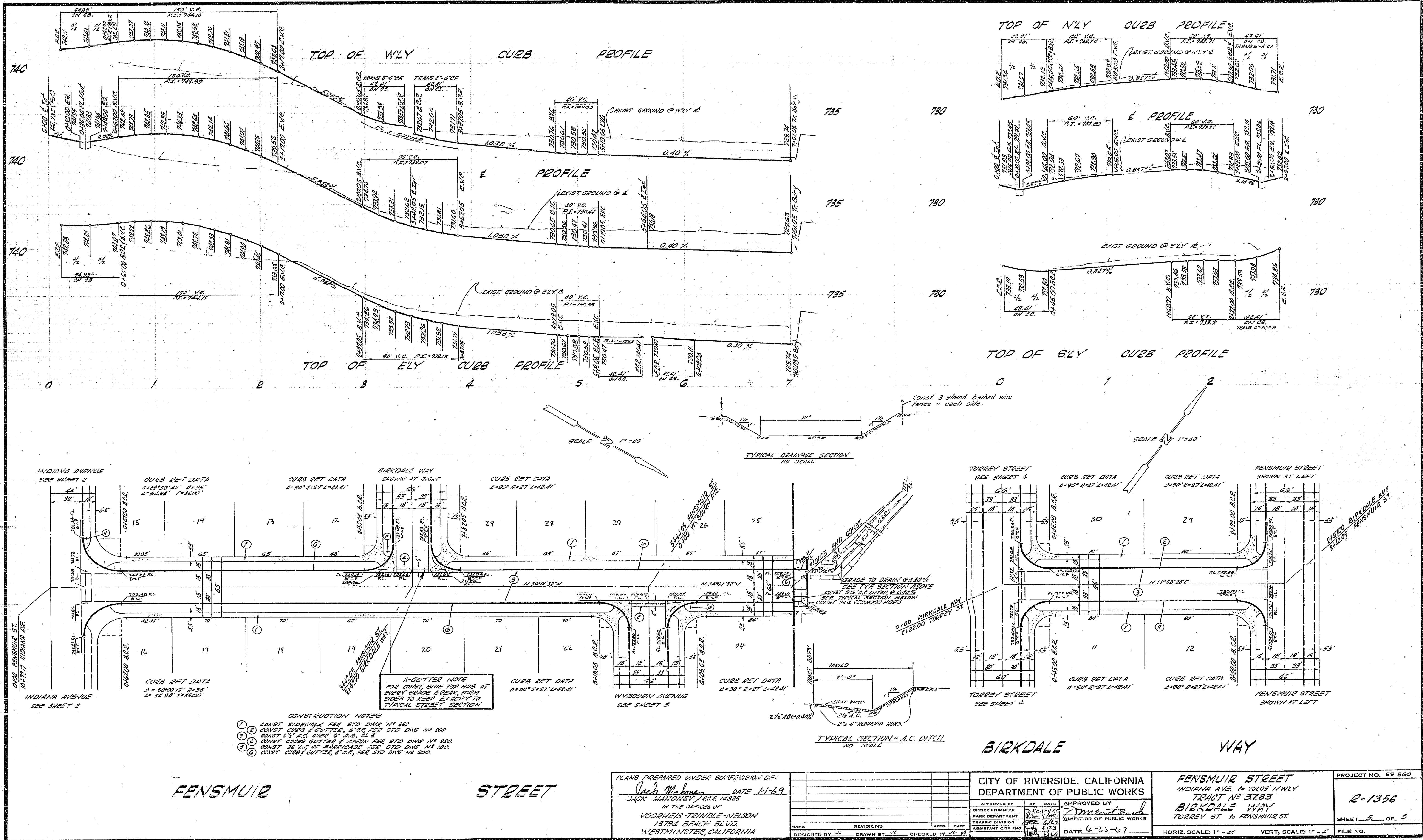


- CONSTRUCTION NOTES**
- 1 CONST SIDEWALK PER STD DWS NR 350.
 - 2 CONST CURB & GUTTER, 6" C, PER STD DWS NR 200.
 - 3 CONST 2 1/2" AC OVER 4" A.S. C.S.
 - 4 CONST 8" L.S. OF BARRICADE PER STD DWS NR 180.
 - 5 CONST 5' WIDE SIDEWALK PER STD DWS NR 250.
 - 6 CONST X-GUTTER & APRON PER STD DWS NR 210.

X-GUTTER NOTE
FOR CONST. BLUE TOP HUB AT
EVERY GRADE BREAK, FORM
SIDES TO KEEP EXACTLY TO
TYPICAL STREET SECTION.

TORREY STREET

PLANS PREPARED UNDER SUPERVISION OF: <i>Jack Mahoney</i> DATE: 11-69 JACK MAHONEY, P.E. 13329 IN THE OFFICE OF WOODRUFFS, TRINDLE & NELSON 15784 BEACH BLVD. WESTMINSTER, CALIFORNIA		CITY OF RIVERSIDE, CALIFORNIA DEPARTMENT OF PUBLIC WORKS		TORREY STREET WYBOURN AVE TO INDIANA AVE TRACT NR 3783		PROJECT NO. 59 500 R-1356 SHEET 4 OF 5 FILE NO.
APPROVED BY PAIK DEPARTMENT TRAFFIC DIVISION ASSISTANT CITY ENG.	BY DATE 11-79	APPROVED BY <i>[Signature]</i> DIRECTOR OF PUBLIC WORKS	DATE 11-79	DATE 11-79	DATE 11-79	
DESIGNED BY J.E.	DRAWN BY J.E.	CHECKED BY J.E.	DATE 11-79	DATE 11-79	DATE 11-79	



FENSMUIR

STREET

PLANS PREPARED UNDER SUPERVISION OF:
Jack Mahoney DATE 1-1-69
 JACK MAHONEY, R.C.E. 14325
 IN THE OFFICES OF
 VOORHEIS-TRINDLE-NELSON
 13784 BEACH BLVD.
 WESTMINSTER, CALIFORNIA

MARK	REVISIONS	APPR.	DATE

CITY OF RIVERSIDE, CALIFORNIA
 DEPARTMENT OF PUBLIC WORKS

APPROVED BY: *[Signature]* DATE 6-23-69
 OFFICE ENGINEER
 PARK DEPARTMENT
 TRAFFIC DIVISION
 ASSISTANT CITY ENG.

FENSMUIR STREET
 INDIANA AVE. TO 70105' N HWY
 TRACT NO. 3783
 BIRKDALE WAY
 TORREY ST. & FENSMUIR ST.

HORIZ. SCALE: 1" = 40'
 VERT. SCALE: 1" = 4'

PROJECT NO. 55 560
 2-1356
 SHEET 5 OF 5
 FILE NO.

- CONSTRUCTION NOTES
1. CONST. SIDEWALK PER STD DING. NO. 550
 2. CONST. CURB & GUTTER, 6" C.C. PER STD DING. NO. 500
 3. CONST. 1 1/2" A.C. GUTTER 9" A.B. 6" S
 4. CONST. CROSS GUTTER & ARROW PER STD DING. NO. 500
 5. CONST. 36" L.F. OF BARRICADE PER STD DING. NO. 180
 6. CONST. CURB & GUTTER, 6" C.C. PER STD DING. NO. 200

N-GUTTER NOTE
 FOR CONST. SLUG TRAP HUBS AT
 EVERY GRADE BREAK, FORM
 SIDES TO KEEP EXACTLY TO
 TYPICAL STREET SECTION

INDIANA AVENUE
 SEE SHEET 2

CURB RET DATA
 1-83° 50' 47" R-35'
 2-54.98' T-33.00'

CURB RET DATA
 1-80° 00' 15" R-35'
 2-14.98' T-33.00'

BIRKDALE WAY
 SHOWN AT RIGHT

CURB RET DATA
 1-80° 00' 15" R-35'
 2-14.98' T-33.00'

CURB RET DATA
 1-80° 00' 15" R-35'
 2-14.98' T-33.00'

WYBOURN AVENUE
 SEE SHEET 3

CURB RET DATA
 1-80° 00' 15" R-35'
 2-14.98' T-33.00'

TORREY STREET
 SEE SHEET 4

CURB RET DATA
 1-80° 00' 15" R-35'
 2-14.98' T-33.00'

FENSMUIR STREET
 SHOWN AT LEFT

CURB RET DATA
 1-80° 00' 15" R-35'
 2-14.98' T-33.00'

BIRKDALE WAY
 SHOWN AT LEFT

CURB RET DATA
 1-80° 00' 15" R-35'
 2-14.98' T-33.00'