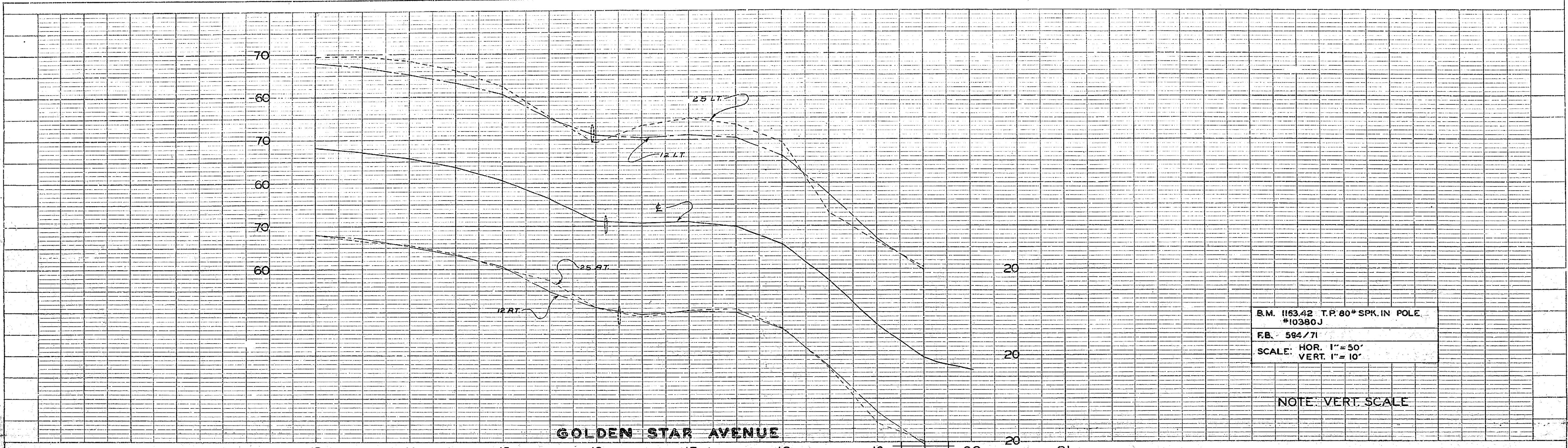


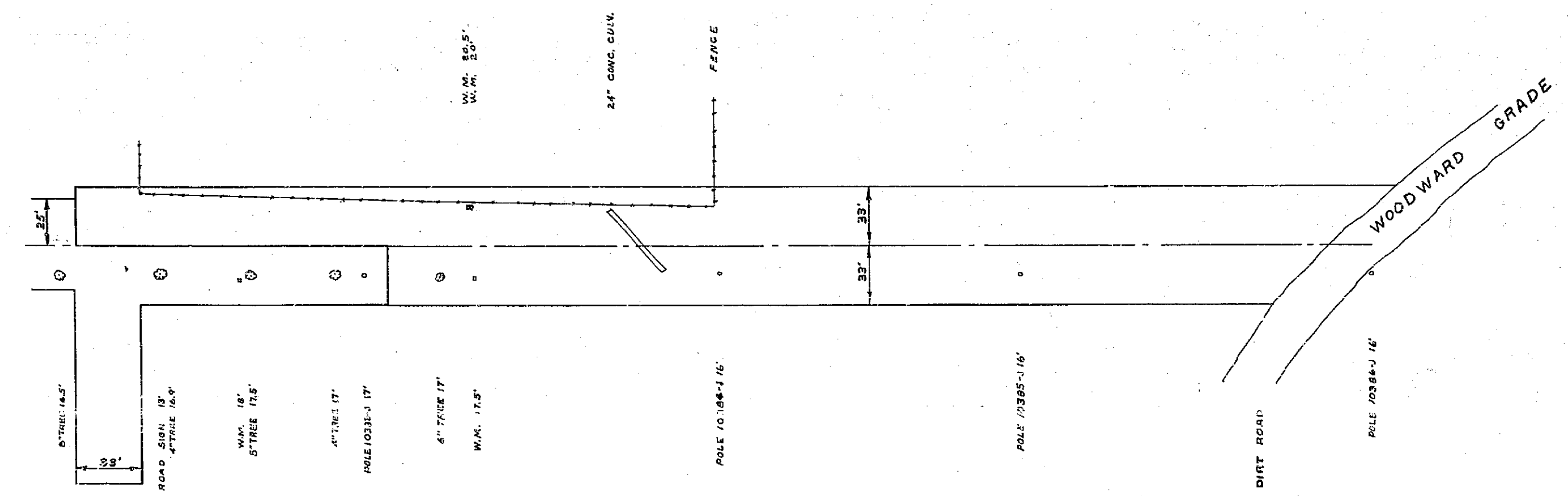
PLATE 1. STATE PROFILE 2. B. & N. ENGINEERS  
 110 WEST 115TH ST. NEW YORK  
 U.S. CO. NO. 100-100



B.M. 1153.42 T.P. 80\" SPK. IN POLE  
 #10380J  
 F.B. 594/71  
 SCALE: HOR. 1\" = 50'  
 VERT. 1\" = 10'

NOTE: VERT. SCALE

PROFILE	
DATE	
BY	
CHECKED BY	
DESIGNED BY	
DRAWN BY	
NO.	



SCALE: 1\" = 50'

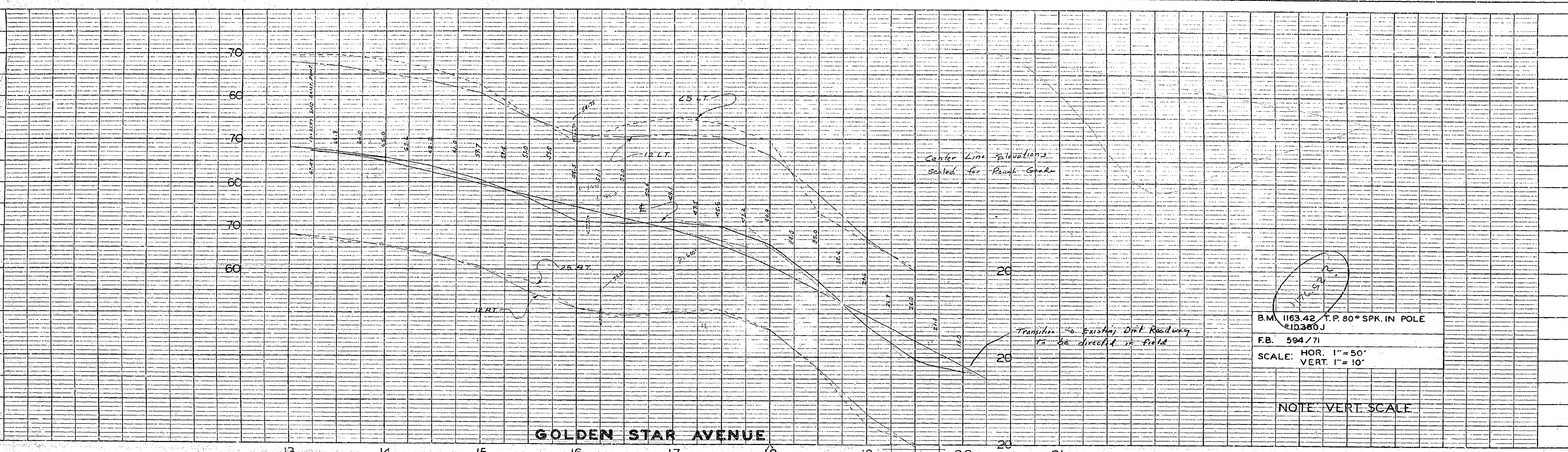
PLAN	
DATE	
BY	
CHECKED BY	
DESIGNED BY	
DRAWN BY	
NO.	

REVISIONS		CITY OF RIVERSIDE CALIFORNIA DEPARTMENT OF PUBLIC WORKS	
MARK	DATE	DESCRIPTION	
DESIGNED BY		CHECKED BY	APPROVED BY
DRAWN BY B.L.			DIRECTOR OF PUBLIC WORKS
RECOMMENDED BY		ASSISTANT CITY ENGINEER	DATE
			<b>R-136</b>
			SHEET 2 OF 2





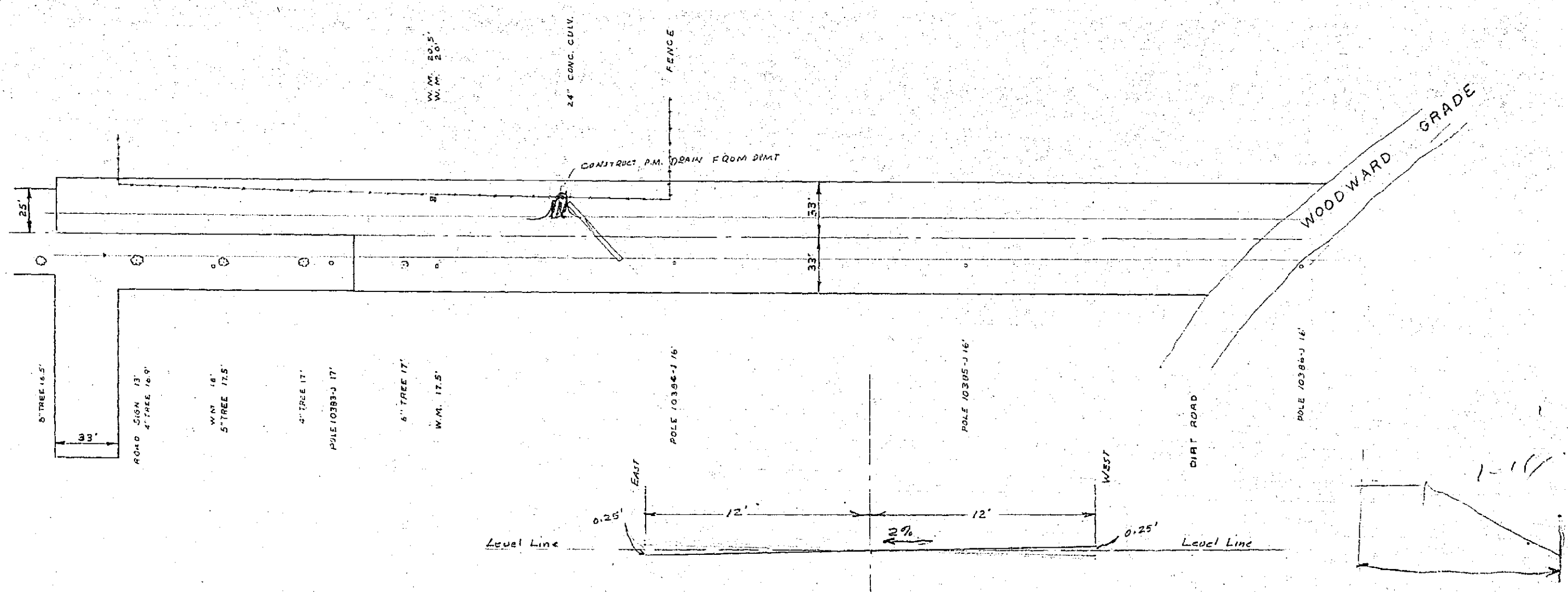
PLATE 1 PLAN PROFILE OF R. B. H. C. STATION  
 KEENE & FESSER CO. NEW YORK  
 N. E. CO. No. 348-10



B.M. 1163.42 T.P. 80" SPK. IN POLE  
 110380J  
 F.B. 594/71  
 SCALE: HOR. 1" = 50'  
 VERT. 1" = 10'

NOTE: VERT. SCALE

GOLDEN STAR AVENUE

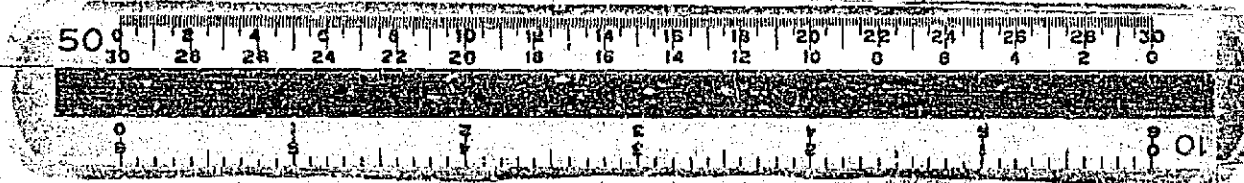


SCALE: 1" = 50'

REVISIONS		CITY OF RIVERSIDE CALIFORNIA DEPARTMENT OF PUBLIC WORKS
MARK	DATE	

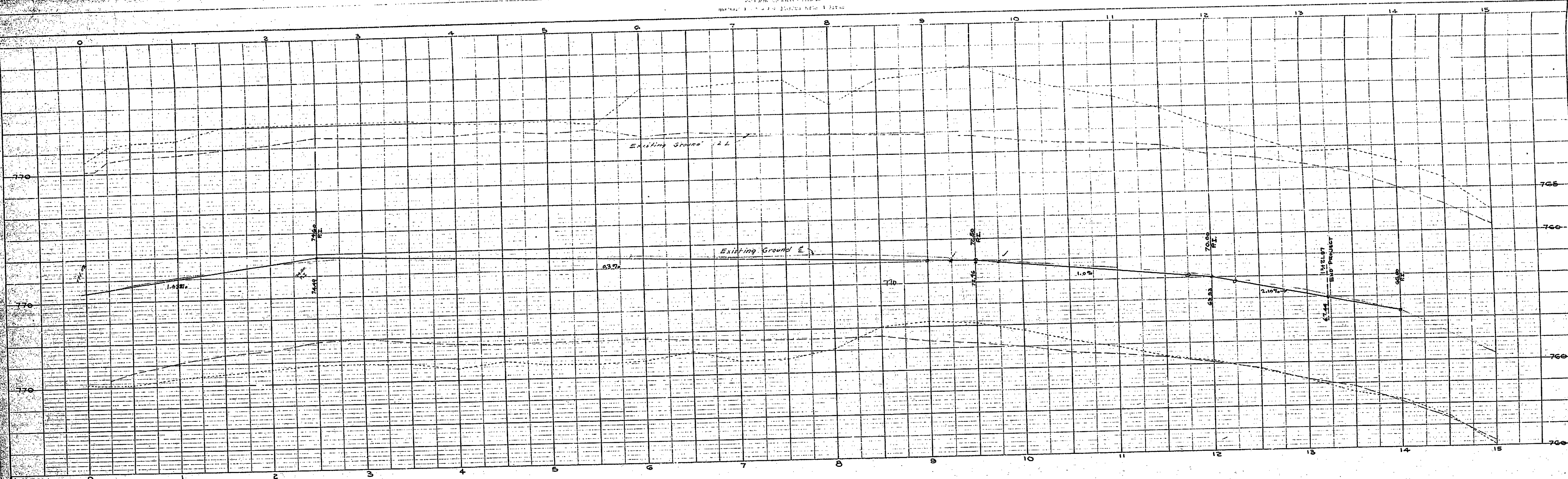
DESIGNED BY DRAWN BY S.L.	CHECKED BY	APPROVED BY	<b>R-136</b>
RECOMMENDED BY	ASSISTANT CITY ENGINEER	DIRECTOR OF PUBLIC WORKS	
DATE		DATE	SHEET 2 OF 2



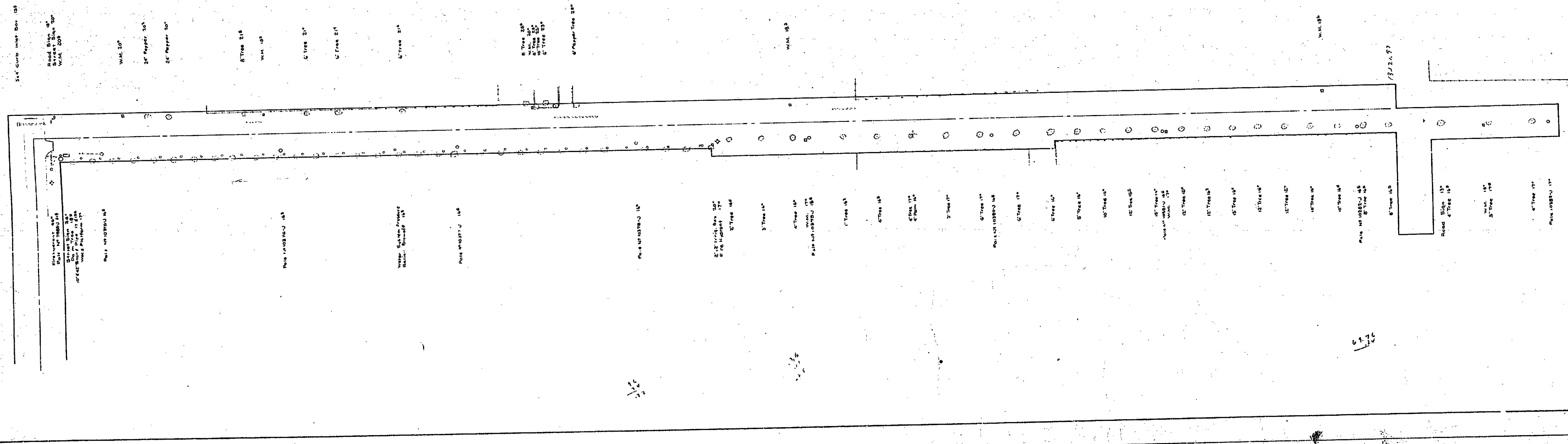
PROFILE	NO.	DATE

PLAN	NO.	DATE





PROFILE	
PROJECT NO.	
DATE	
SCALE	



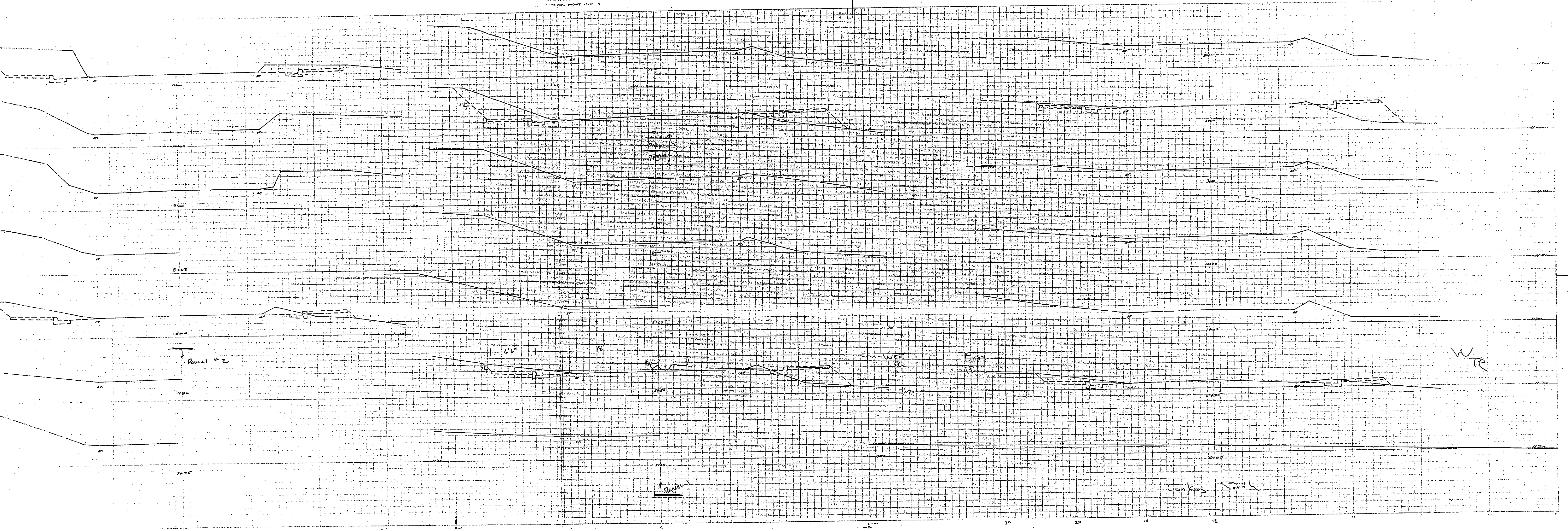
PLAN	
PROJECT NO.	
DATE	
SCALE	

R-136



R-136

R-136



← | → 1 OF 3

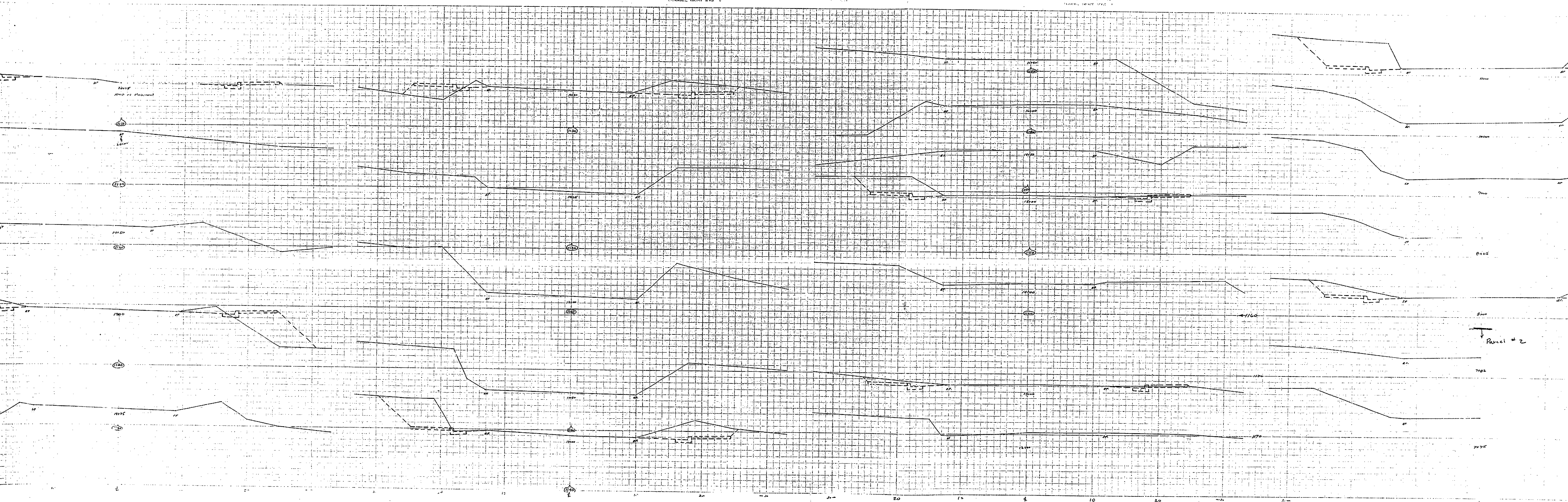
R-136

R-136

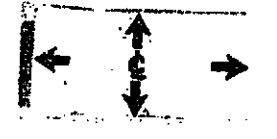


APR 19 1954  
DEPARTMENT OF THE ARMY  
ENGINEERING CENTER  
FORT MONMOUTH, N.J.

APR 19 1954  
DEPARTMENT OF THE ARMY  
ENGINEERING CENTER  
FORT MONMOUTH, N.J.

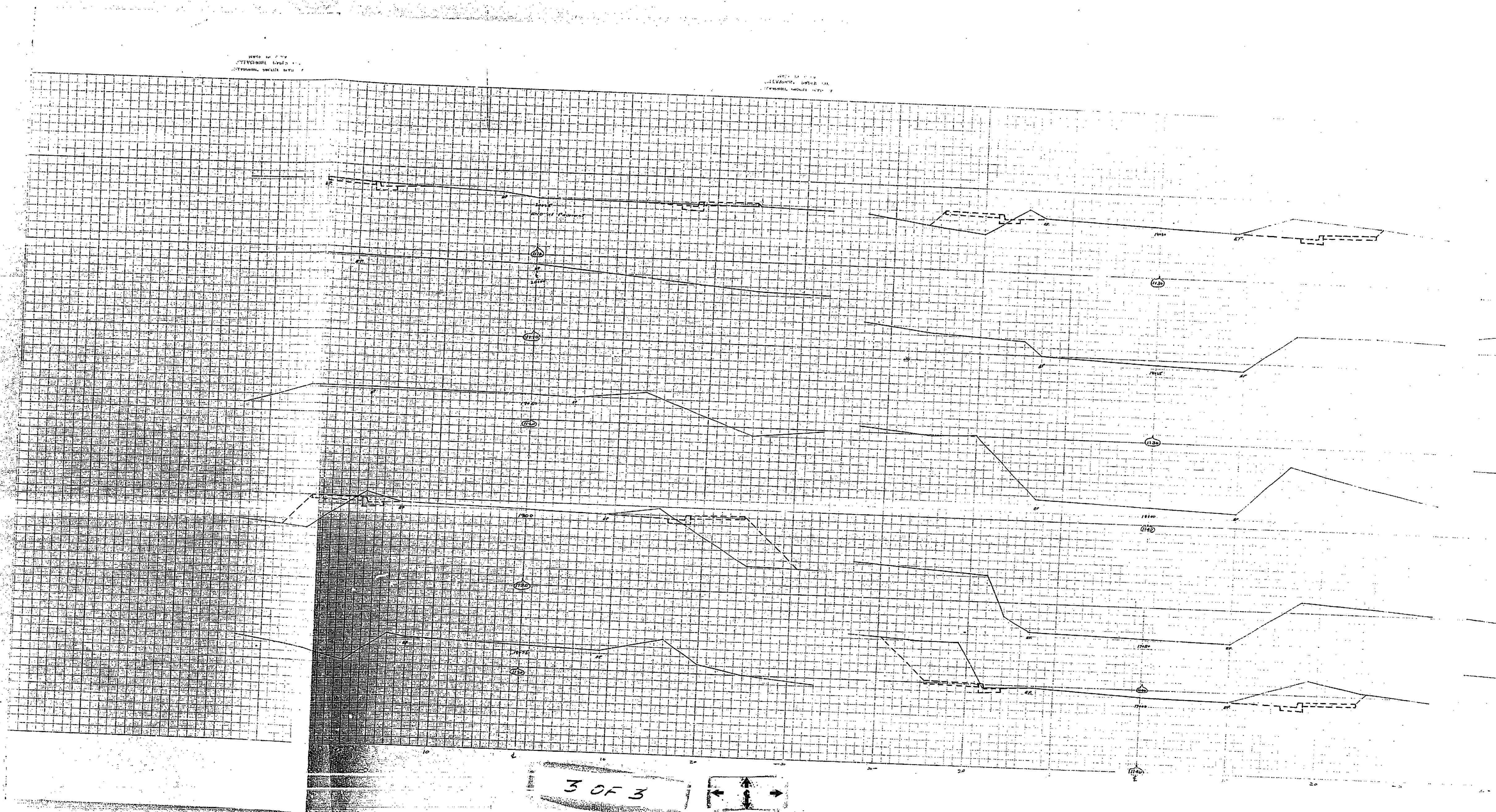


2 OF 3





R



3 OF 3

