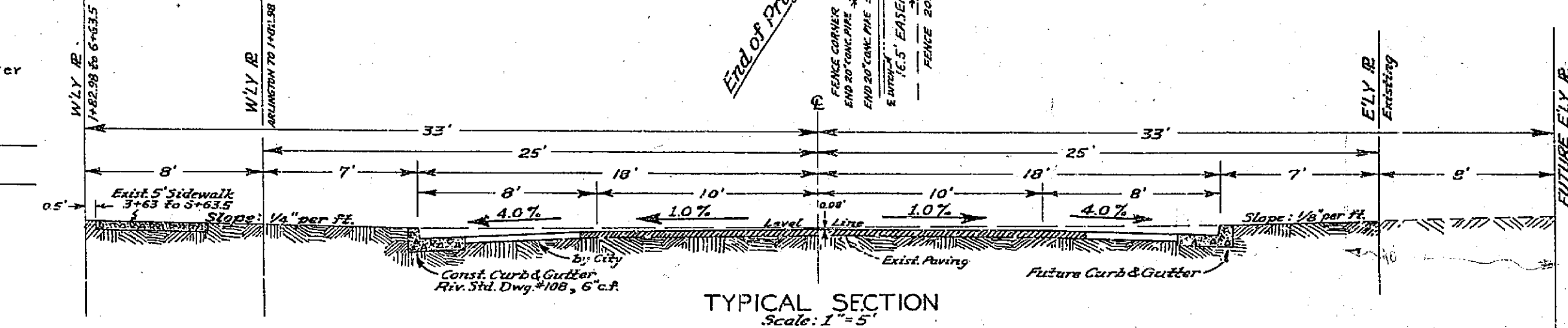
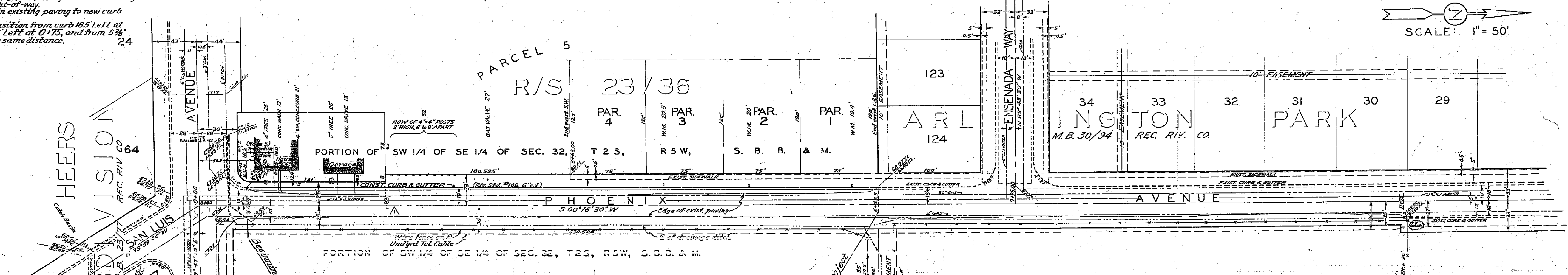


NOTE: 1. @ indicates a top of curb elevation obtained by adding a full curb face height to the existing F.L. elevation.
 2. Contractor shall remove portion of walk (0+80) sufficient to construct curb & gutter.
 3. Contractor shall remove portion of driveway (1+40) within right-of-way.
 4. City to join existing paving to new curb and gutter.
 5. Make transition from curb 18' left at E.C.R. 0+77.5 to 18' left of 0+70, and from 5 3/8' c.r. to 6' c.r. over the same distance.



REVISIONS			CITY OF RIVERSIDE CALIFORNIA DEPARTMENT OF PUBLIC WORKS	
MARK	DATE	DESCRIPTION		
Δ	8-16-57	Added station & note wdg		
			PHOENIX AVENUE CURB & GUTTER IMPROVEMENT DISTRICT	
DESIGNED BY WDS		CHECKED BY JFB	APPROVED BY <i>SOM</i>	
DRAWN BY H.Bull			DIRECTOR OF PUBLIC WORKS	
RECOMMENDED BY <i>J. S. Penland</i>		ASSISTANT CITY ENGINEER	DATE July 16, 1957	
			R-137 SHEET 1 OF 1	