

RIVERSIDE



CALIFORNIA

PUBLIC WORKS DEPARTMENT

VAN BUREN BOULEVARD WIDENING VICTORIA TO SOUTH CITY LIMITS

PROJECT LENGTH - 8500'

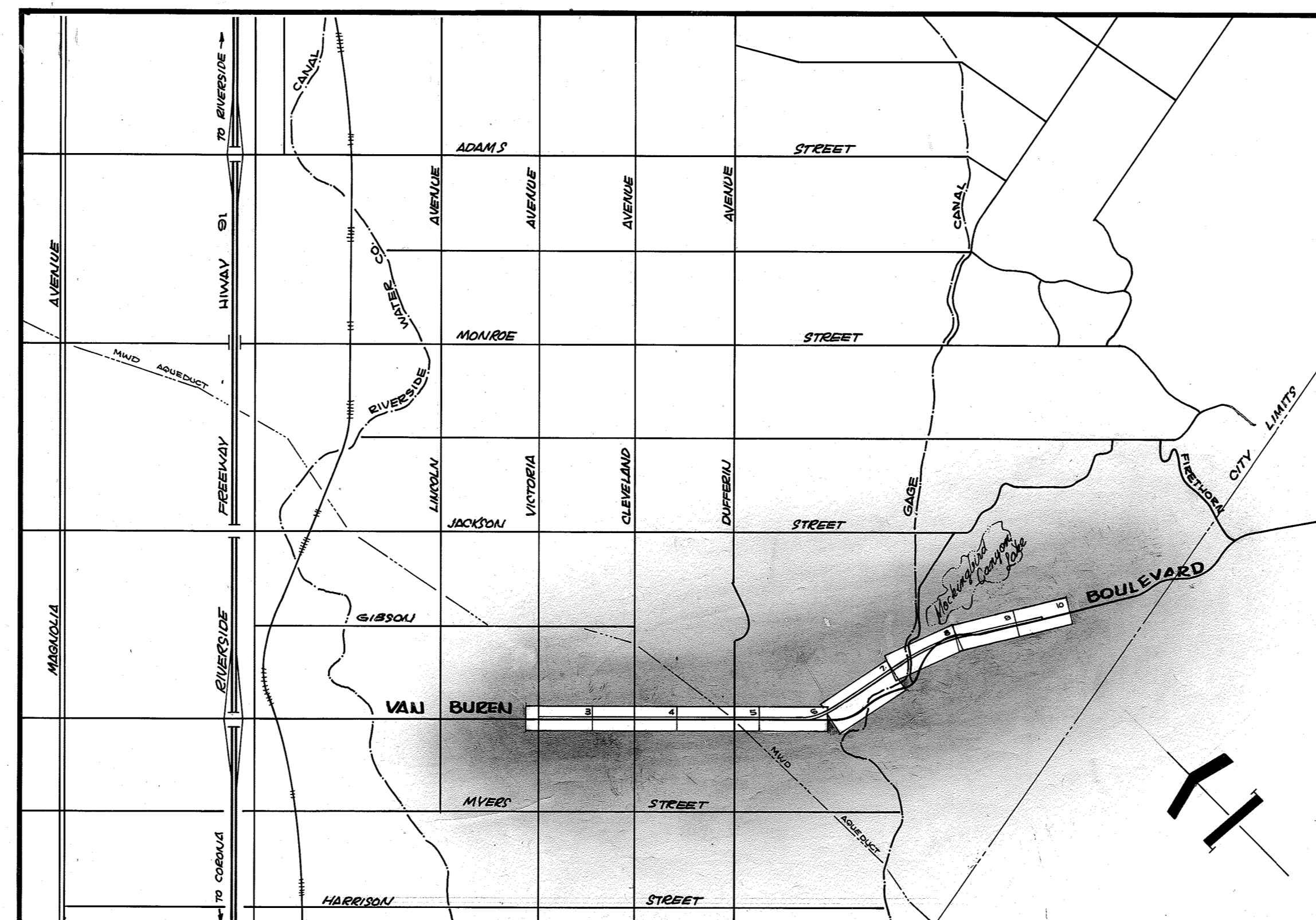
TRAFFIC INDEX - 8

SPECIAL CONSTRUCTION NOTES

1. CONSTRUCT STRUCTURAL SECTION PER SCHEDULE ON PLAN SHEET NO. 2.
2. OVERLAY EXISTING PAVEMENT WITH VARIABLE THICKNESS OF ASPHALT CONCRETE. MINIMUM OVERLAY TO BE 0.08' THICK.
3. OVERLAY EXISTING PAVEMENT WITH A CONSTANT 0.25' OF ASPHALT CONCRETE.
4. PAVE 0.5' THICK ASPHALT CONCRETE SHOULDER WHERE SHOWN ON PLAN AND PER TYPICAL SECTIONS.
5. PAVE 0.2' THICK ASPHALT CONCRETE INLET PER DETAIL ON PLAN SHEET NO. 5.
6. REMOVE ENTIRE TREE
 CLASS I - OVER 6" TO 18" DIA.
 CLASS II - OVER 18" TO 36" DIA.
 CLASS III - OVER 36" DIA.
 ORANGE TREES, TO BE REMOVED, ARE PART OF CLEARING AND GRUBBING. NOT ALL ORANGE TREES ARE SHOWN ON PLAN.
 TRANSPLANT PALM TREES TO LOCATION INDICATED ON PLAN OR WHERE DIRECTED BY THE PARK DEPARTMENT. ALL TRANSPLANT LOCATIONS WILL BE BETWEEN STATION 3+00 AND STATION 4+00. SIZE CLASSES ARE THE SAME AS FOR TREE REMOVAL.
7. UNLESS OTHERWISE NOTED ON PLAN:
 ALL FILL SLOPES TO BE 2:1
 ALL CUT SLOPES LESS THAN 2' HIGH TO BE 2:1
 ALL CUT SLOPES 2' HIGH OR LIGHTER TO BE 1 1/2:1
 SLOPES LESS THAN 2' HIGH ARE NOT NECESSARILY SHOWN ON THE PLAN.
8. GRADE AS NECESSARY TO ALLOW FLOW TO AND FROM PROPOSED DRAINS.
9. ALL PIPES SHALL BE INSTALLED PER THE PIPE ALTERNATE SCHEDULE ON PLAN SHEET NO. 2.
10. GRADE TO DRAIN FROM PROPOSED PIPE AND PAVE WITH 0.5' OF AC. LENGTH OF SHOULDER TRANSITION SHOWN AT EACH LOCATION. SEE DETAIL ON PLAN SHEET 3.
11. TRANSITION SHOULDER TO DRAIN TO PROPOSED PIPE AND PAVE WITH 0.5' OF AC. PER DETAIL ON PLAN SHEET 3.
12. PLACE CONCRETE BERM PER STD. 250. LENGTH SHOWN AT EACH LOCATION.

GENERAL CONSTRUCTION NOTES

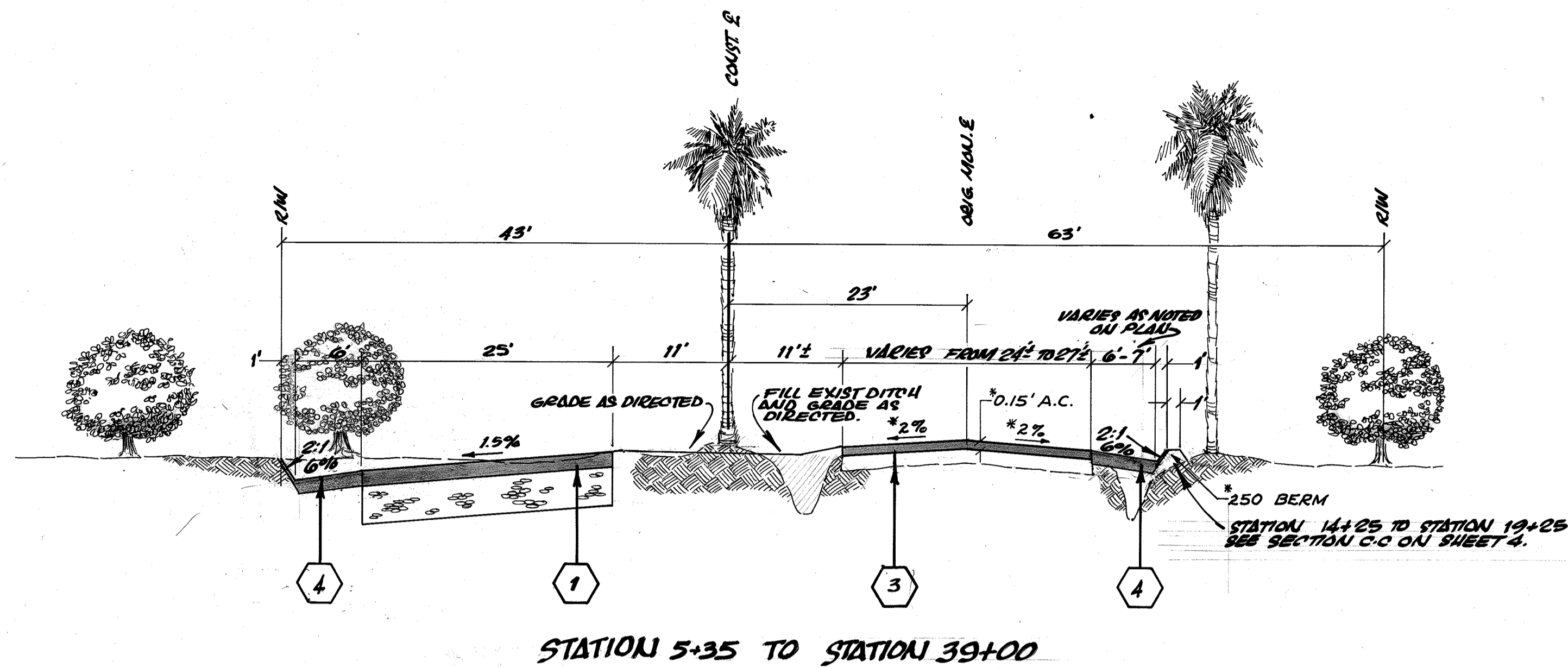
1. TRANSITION NEW CONSTRUCTION TO MEET EXISTING FACILITIES AS DIRECTED BY THE INSPECTOR.
2. SIDE STREETS ARE ASSUMED TO INTERSECT THE CONSTRUCTION & AT RIGHT ANGLES FOR CALCULATIONS.
3. EXISTING UTILITIES AND IRRIGATION FACILITIES SHOWN ON THIS PLAN ARE PLOTTED FROM AVAILABLE RECORDS. LOCATIONS AND DEPTHS ARE APPROXIMATE. THE CONTRACTOR IS REQUESTED TO TAKE DUE PRECAUTIONARY MEASURES TO LOCATE AND PROTECT ALL UNDERGROUND FACILITIES.
4. WHERE NEW CONSTRUCTION IS INDICATED:
 a) CLEAR AND GRUB
 b) REMOVE AC PAVEMENT EXCEPT WHERE OVERLAY IS SHOWN ON PLAN
 c) REMOVE ORANGE TREES IN AREA OF CONSTRUCTION AND ELSEWHERE AS NOTED ON THE PLAN.
5. ALL TRAFFIC SIGNS REMOVED DURING THE CONSTRUCTION SHALL BE SALVAGED BY THE CONTRACTOR AND TURNED OVER TO THE CITY PUBLIC SERVICE DEPARTMENT. STREET NAME SIGNS SHALL BE RELOCATED BY THE CONTRACTOR WHERE DESIGNATED BY THE INSPECTOR AND SHALL BE SET PER STD. 666.
6. UNLESS DAMAGED BY CONTRACTOR'S OPERATIONS, FAILED PAVEMENT IN AREAS OF PROPOSED OVERLAYS WILL BE REMOVED AND REPAIRED WITH 0.5' OF ASPHALT CONCRETE BY CITY PARKER PRIOR TO THE OVERLAYING BY THE CONTRACTOR.
7. THE CONTRACTOR SHALL BE RESPONSIBLE TO REPAIR OR REPLACE IN KIND AT HIS EXPENSE ANY CULVERTS DAMAGED BY HIS OPERATIONS DURING CONSTRUCTION.
8. REGRADE ALL DRIVEWAYS AND GROVE ROADS AS NECESSARY TO RESTORE TO ORIGINAL DRAINAGE CONDITION.
9. WHERE EXISTING IRRIGATION LINES END IN THE PROPOSED ROADWAY, CUT THE PIPE BACK TO 50' OFF CONSTRUCTION & AND TERMINATE WITH AN IN KIND STAND PIPE. STANDPIPES SALVAGED ON THE JOB MAY BE USED.
10. ALL TYPE L MARKERS AND WEIR SIGNS SHALL BE INSTALLED PER STD. 665.
11. RIGHTS OF ENTRY HAVE BEEN OBTAINED FOR WORK SHOWN ON PRIVATE PROPERTY.



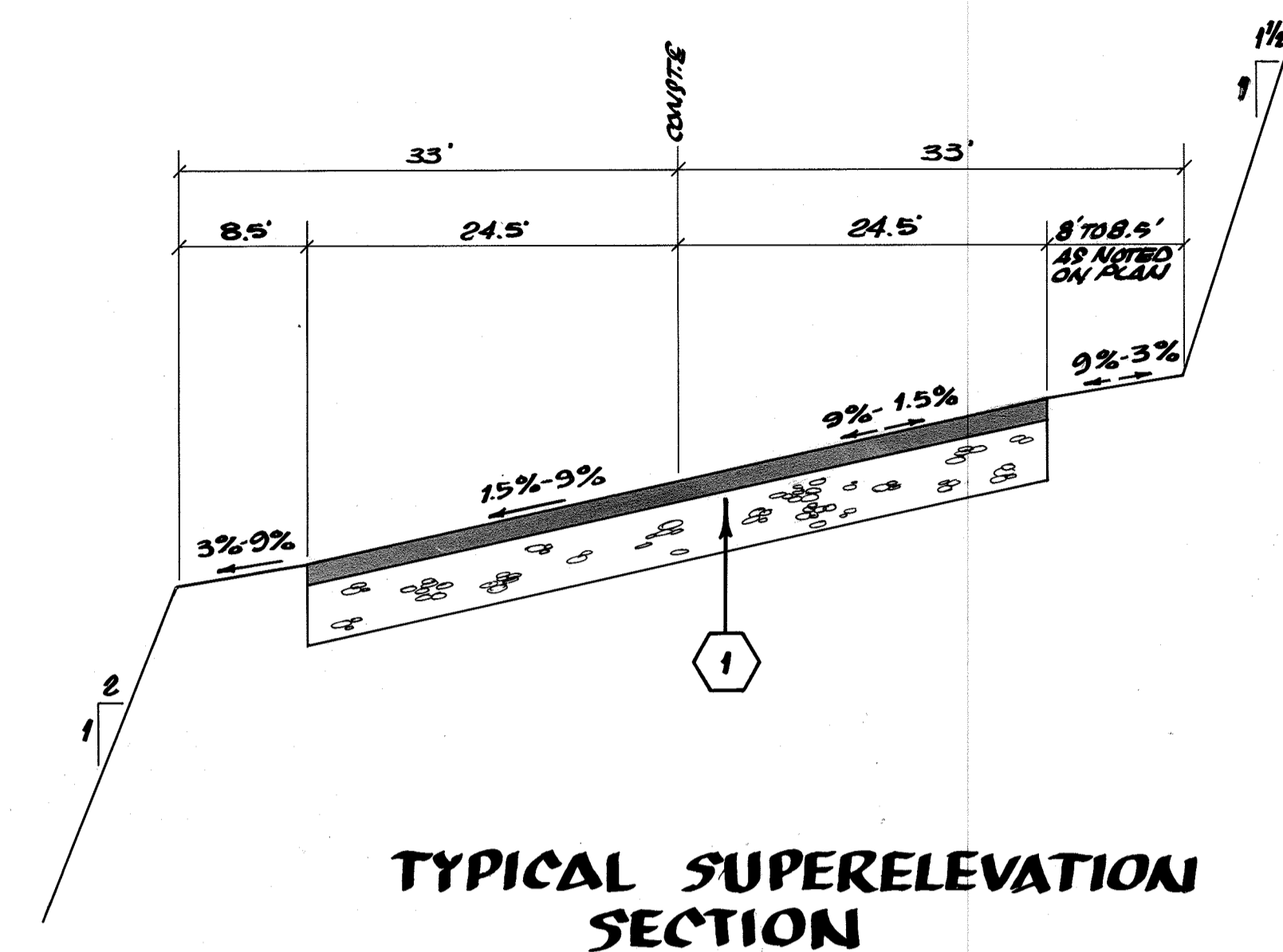
PROJECT LOCATION MAP
SCALE 1"=1600'

CITY OF RIVERSIDE, CALIFORNIA PUBLIC WORKS DEPARTMENT		Van Buren Blvd. Widening Victoria to South City Limits		ACCOUNT No. 369 DRAWING NUMBER R-1372 SHEET 1 OF 10
APPROVED BY	BY DATE	APPROVED BY	DATE	DESIGNED BY
PRINCIPAL ENGINEER	6/18	DIRECTOR OF PUBLIC WORKS	6/20	TER
PARK DEPARTMENT				CHECKED BY
TRAFFIC DIVISION				S.F.B.
CHIEF PUB. WKS. ENGR.				

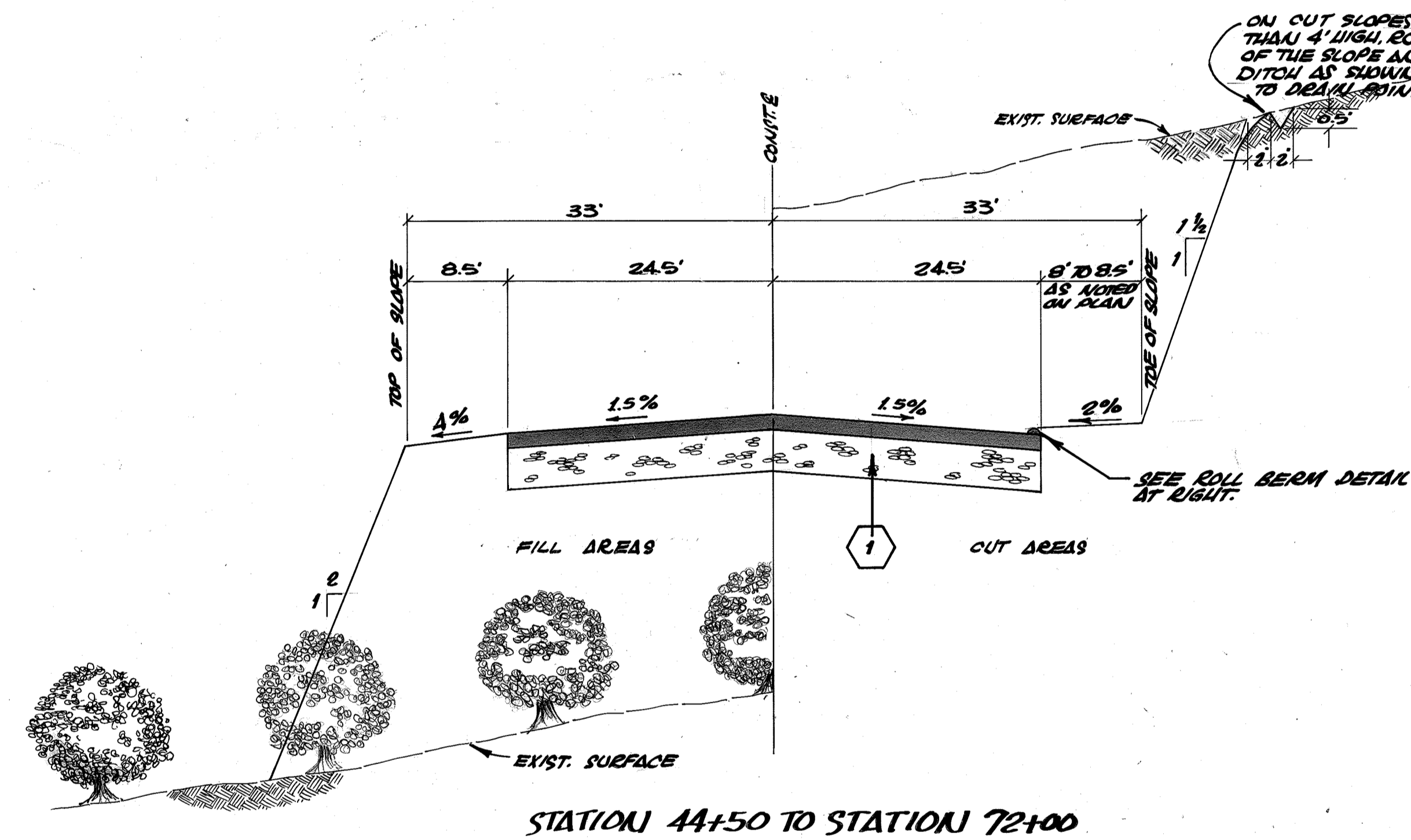
INDEXED P.D. *AS BUILT 5-31-74 R/M



STATION 5+35 TO STATION 39+00



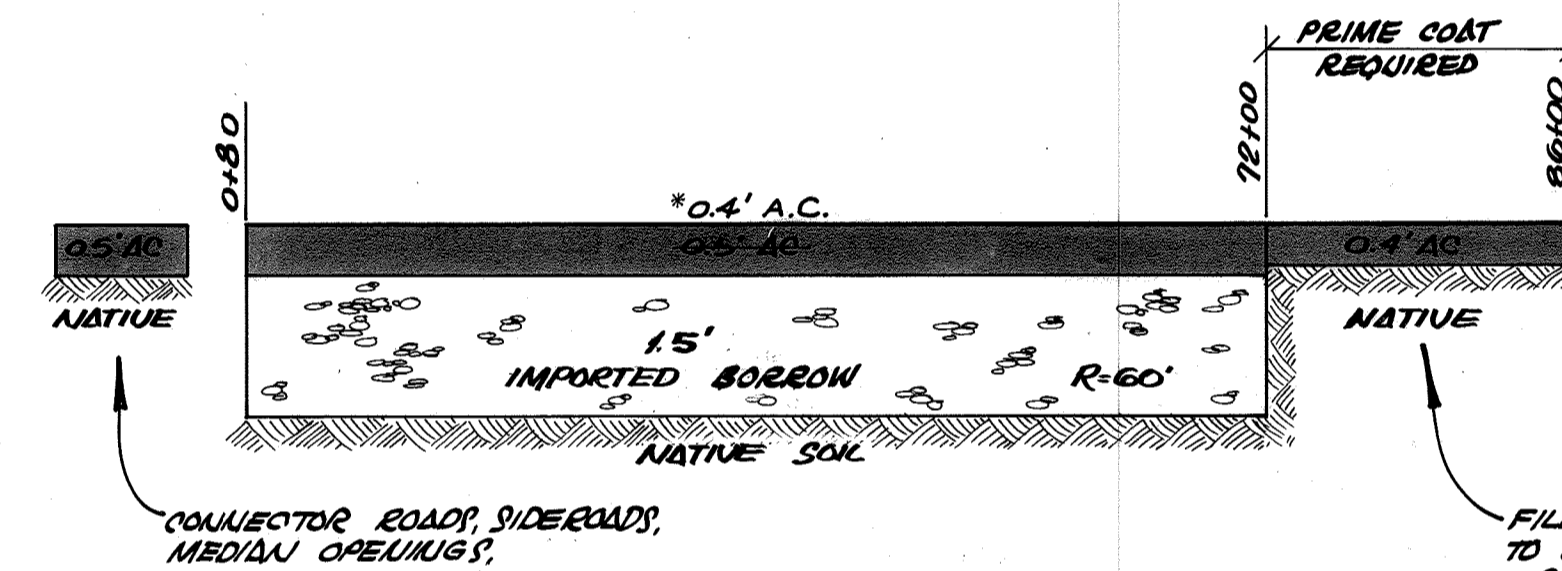
TYPICAL SUPERELEVATION SECTION



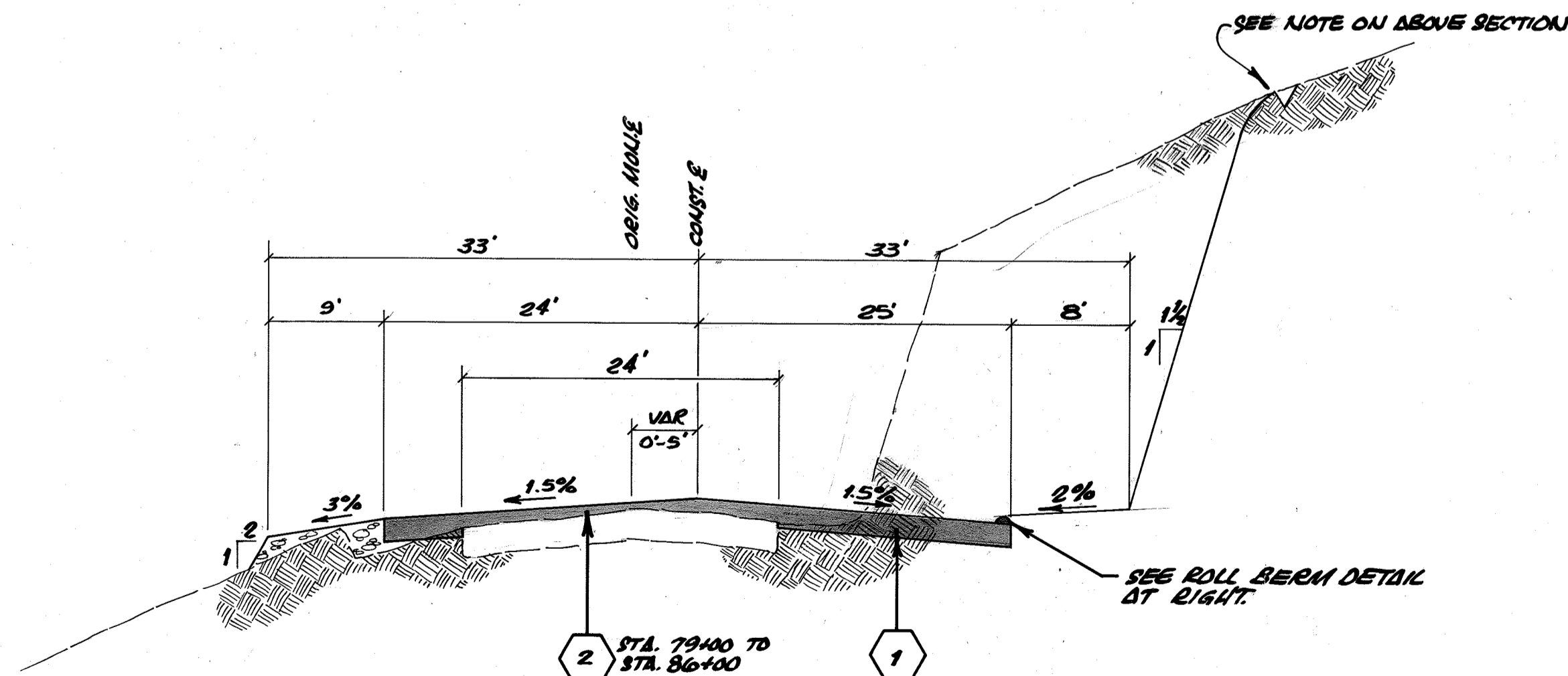
STATION 44+50 TO STATION 72+00

TYPICAL SECTION NOTES:

1. STATIONS NOT COVERED BY TYPICAL SECTIONS ARE TRANSITION AREAS.
2. THE CROSS SLOPES SHOWN ARE TYPICAL AND SHALL APPLY EXCEPT WHERE PROPOSED EDGE OF PAVEMENT ELEVATIONS ARE POSTED ON THE PLAN SHEET PROFILE. THE 9% SUPERELEVATION SLOPE SHALL BE CONSIDERED TYPICAL.
3. THE SHOULDERS SHALL BE AS SHOWN IN TYPICAL SECTIONS EXCEPT WHERE ALTERED TO MEET DRIVEWAYS OR PROVIDE DRAINAGE TO CULVERTS, AS DIRECTED BY THE INSPECTOR.



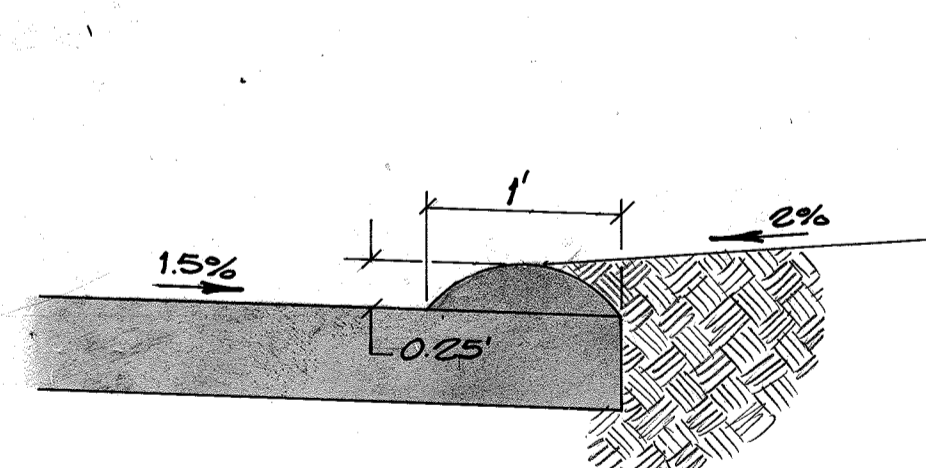
STRUCTURAL SECTION



STATION 72+00 TO STATION 86+00

TYPICAL SECTIONS

HORIZONTAL SCALE: 1"=10'
VERTICAL SCALE: 1"=4'



ROLL BERM DETAIL
STA 67+00 TO STA 86+50
SCALE 1"=1'

SIZE	LOCATION	TYPE	CLASS	BEDDING
8"	ALL IRRIGATION LINES	CP	EX. STRENGTH	CASE I
8"		ACP	CL. II	CASE I
15"	STA. 44+00	CP	2000-D	CASE III A-3/4 D
15"		RCP	3000-D	CASE I
15"		CMP	16 GA.	CASE I
15"	ALL LOCATIONS EXCEPT STA 44+00	CP	2000-D	CASE III A-D
15"		RCP	3000-D	CASE I
15"		CMP	16 GA.	CASE I
18"	ALL LOCATIONS	CP	2000-D	CASE I
18"		RCP	1350-D	CASE I
18"		CMP	16 GA.	CASE I
24"	ALL LOCATIONS	CP	2000-D	CASE I
24"		RCP	1250-D	CASE I
24"		CMP	16 GA.	CASE I

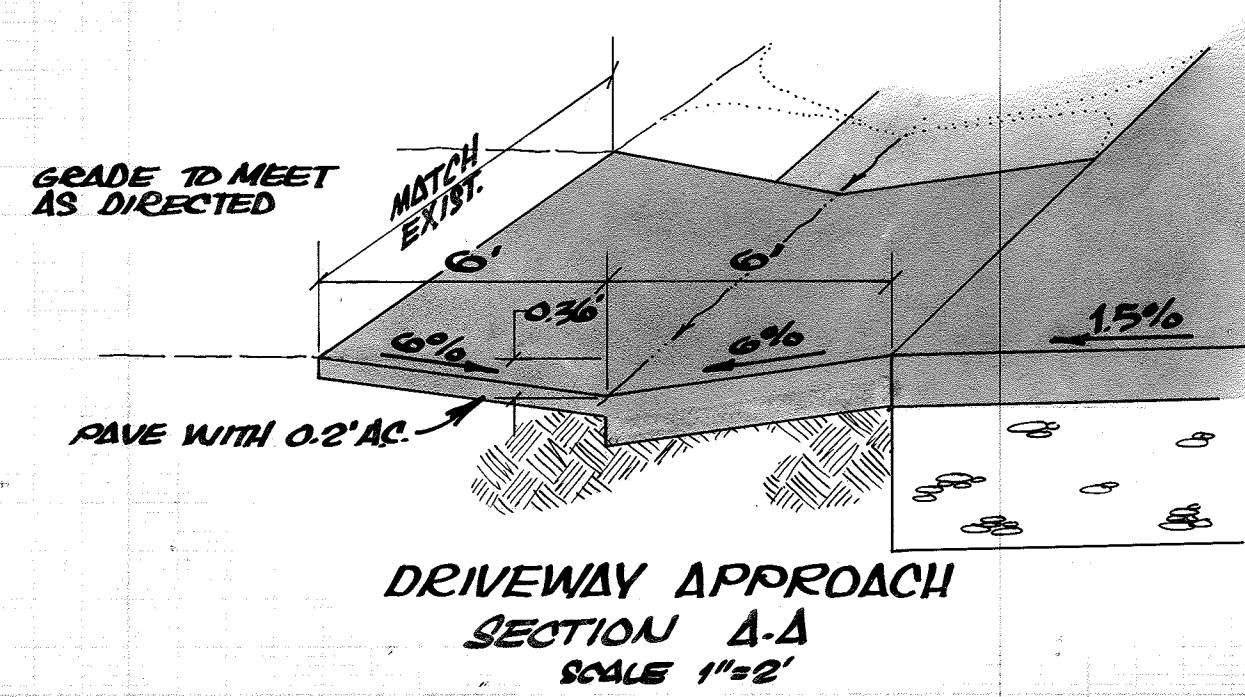
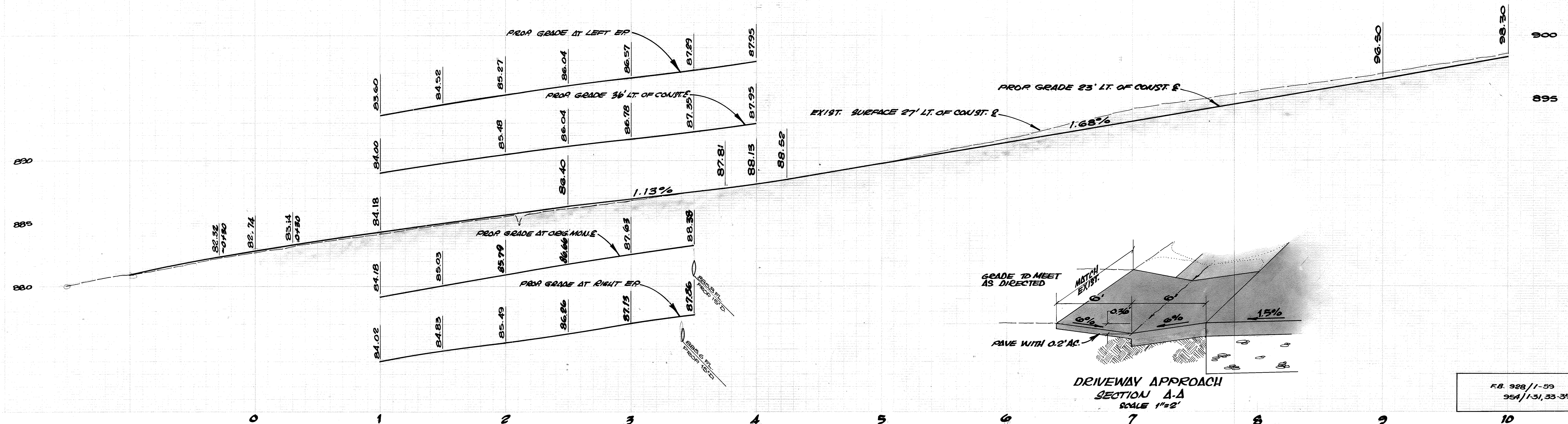
NOTES:

1. ALL BEDDINGS ARE PER STD. 452.
2. TRENCH BACKFILL SHALL BE PER STD. 453.
3. THE PIPE STRENGTHS AND CLASSES ARE THE MINIMUM TO BE ALLOWED. THE CONTRACTOR MAY USE STRONGER PIPES AT HIS OPTION.

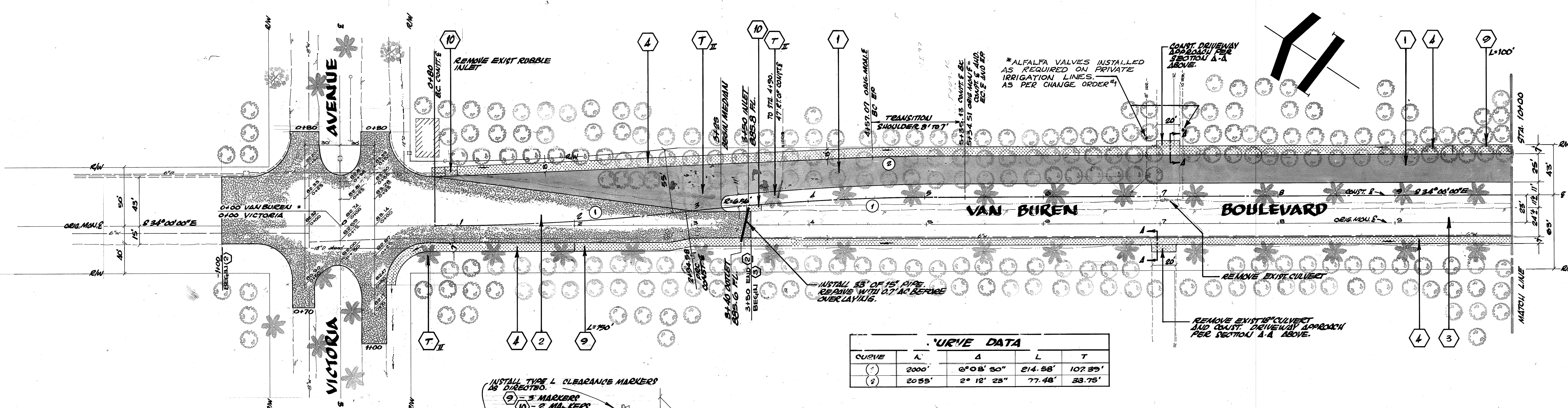
PIPE ALTERNATE SCHEDULE

CITY OF RIVERSIDE, CALIFORNIA PUBLIC WORKS DEPARTMENT		Van Buren Blvd. Widening Victoria to South City Limits	ACCOUNT No. 369
APPROVED BY PRINCIPAL ENGINEER PARK DEPARTMENT	BY DATE 6/28		DRAWING NUMBER R-1372
APPROVED BY DIRECTOR OF PUBLIC WORKS	DATE 6-28-72	SHEET 2 OF 10	
DESIGNED BY REVISIONS	DRAWN BY CHECKED BY S.J.B.		

*AS BUILT 5-31-74 RDM

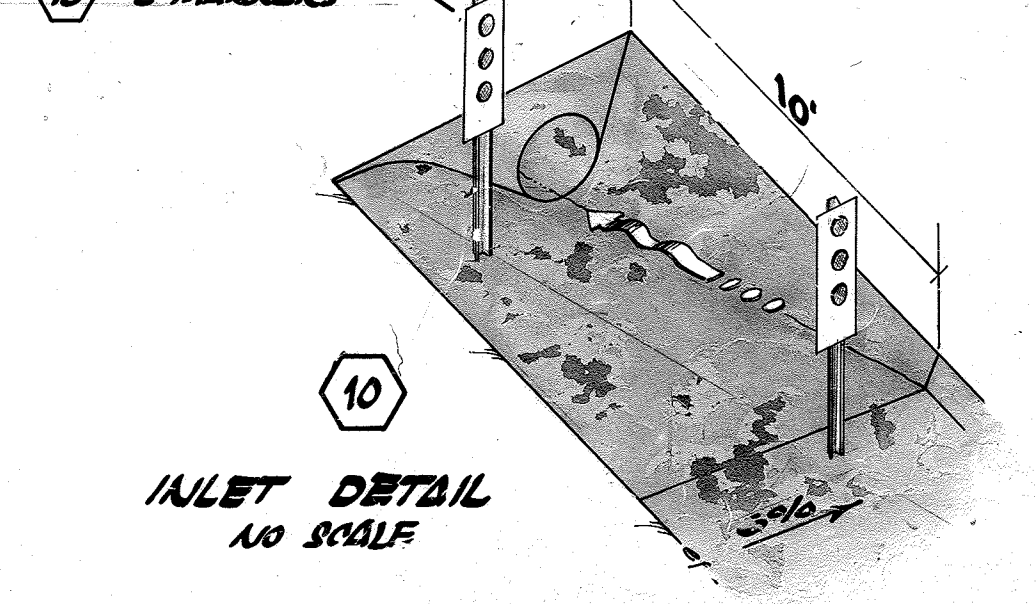
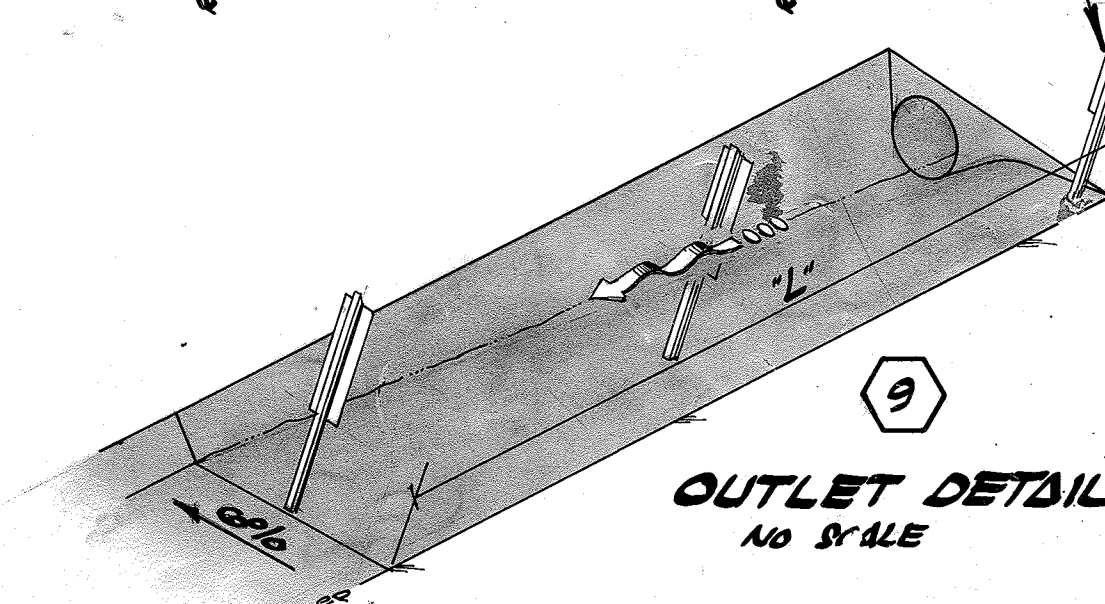


F.B. 928/1-59
954/1-51, 33-35



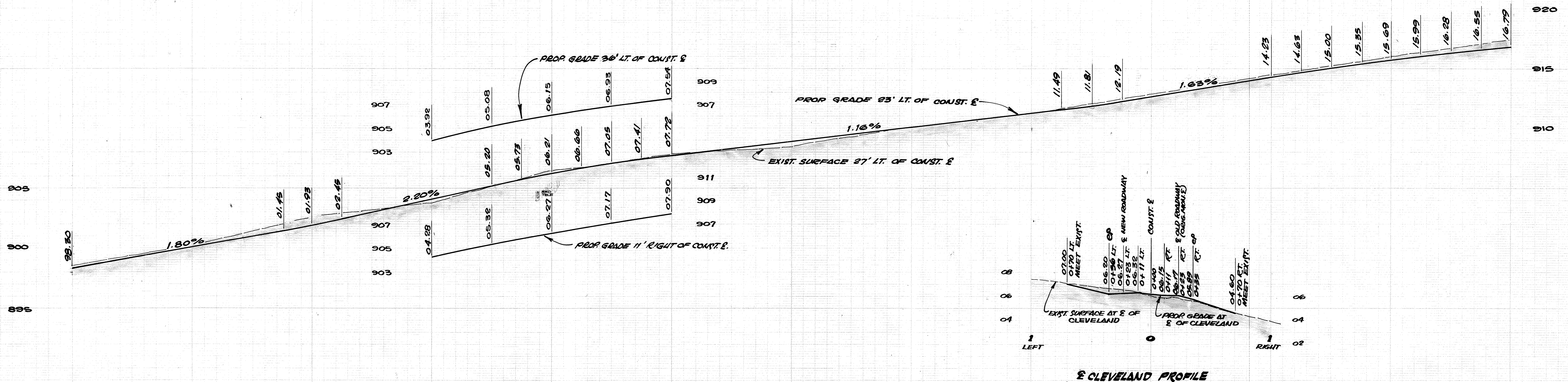
CURVE DATA

CURVE	K'	Δ	L	T
(1)	2000'	6° 08' 30"	214.58'	107.39'
(2)	2055'	2° 12' 28"	77.48'	33.75'

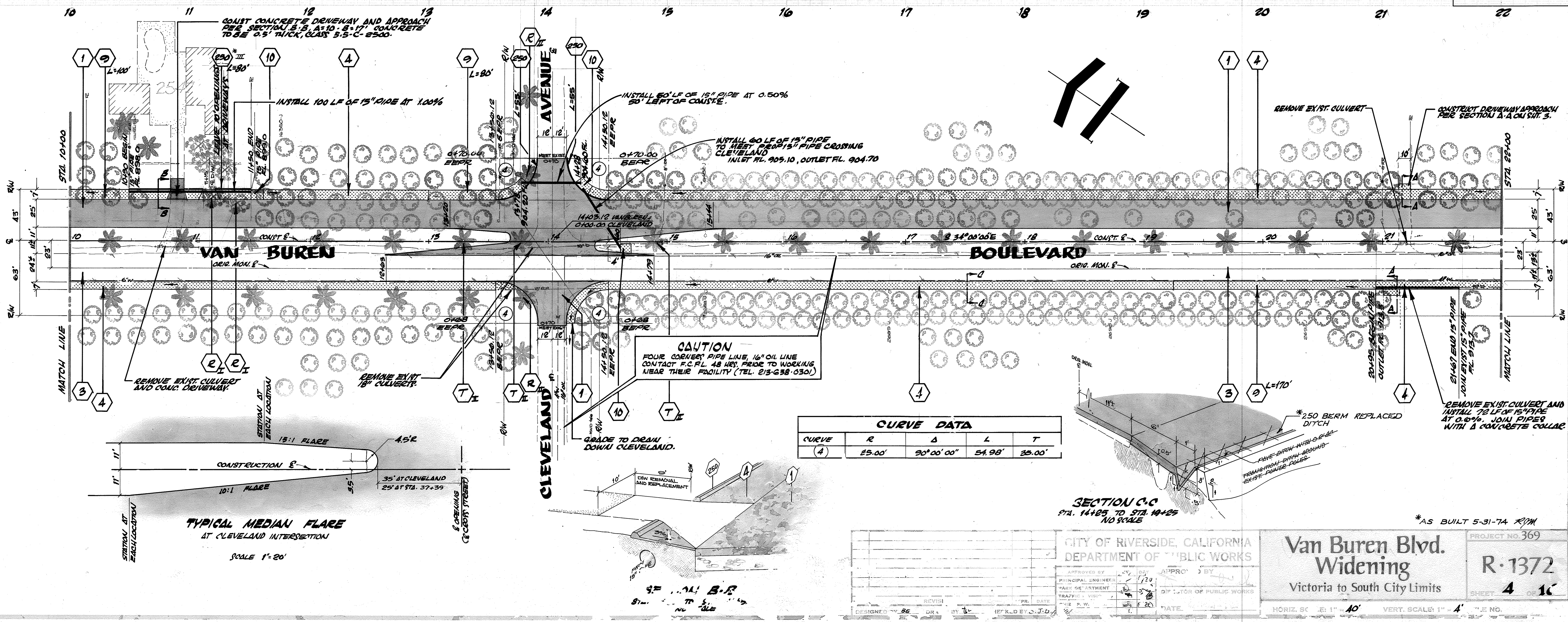


*AS BUILT 6-3-74 RYM

CITY OF RIVERSIDE, CALIFORNIA DEPARTMENT OF PUBLIC WORKS		PROJECT NO. 369	
Van Buren Blvd. Widening		R-1372	
Victoria to South City Limits		SHEET 3 OF 10	
APPROVED BY: [Signature]	DATE: [Date]	HORIZ. SCALE: 1" = 40'	VERT. SCALE: 1" = 4'



FB. 928/1-59
954/1-31, 33-35



CURVE DATA

CURVE	R	Δ	L	T
(4)	25.00'	90° 00' 00"	54.98'	35.00'

TYPICAL MEDIAN FLARE
AT CLEVELAND INTERSECTION
SCALE 1"=20'

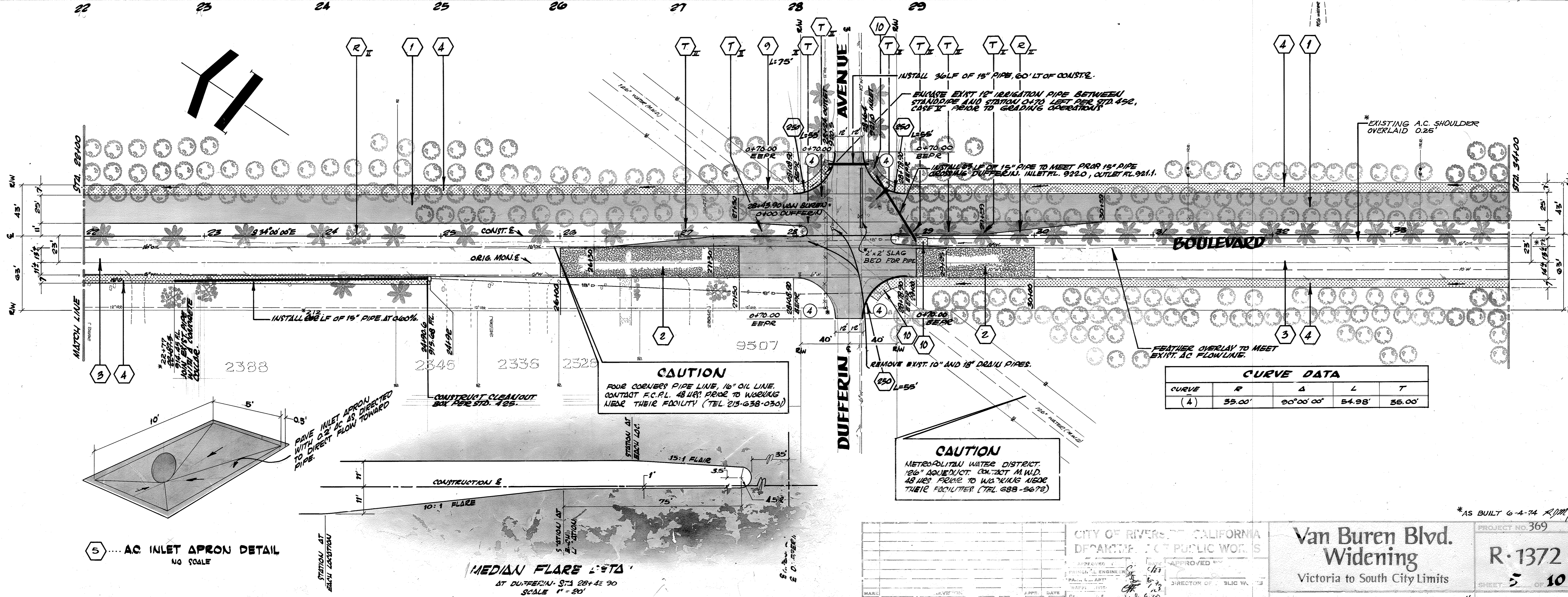
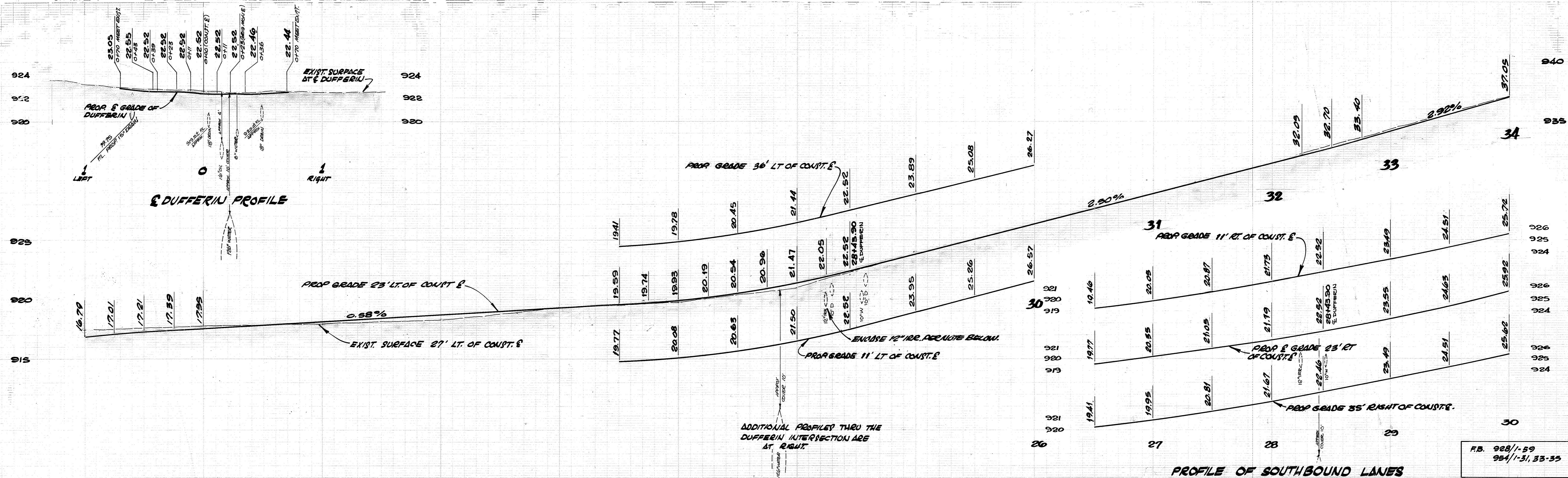
SECTION C-C
STA. 14+25 TO STA. 14+25
NO SCALE

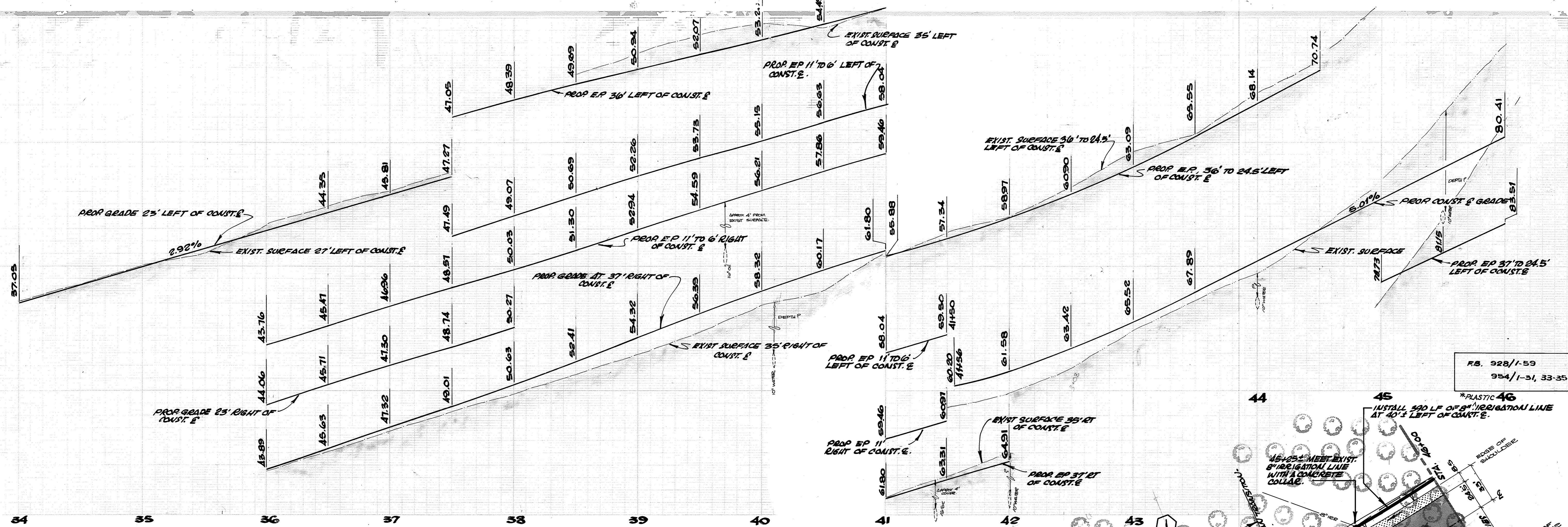
CITY OF RIVERSIDE, CALIFORNIA
DEPARTMENT OF PUBLIC WORKS

Van Buren Blvd. Widening
Victoria to South City Limits

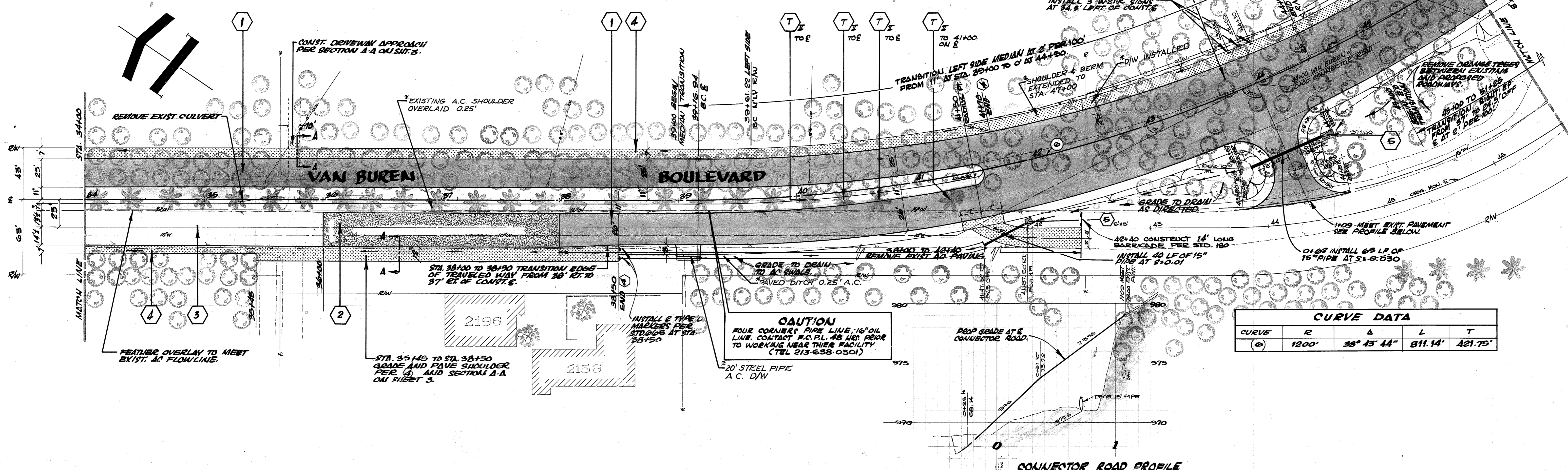
PROJECT NO. 369
R-1372
SHEET 4 OF 16

HORIZ. SCALE: 1"=40'
VERT. SCALE: 1"=4'





RS. 928/1-59
954/1-31, 33-35



CURVE DATA

CURVE	R	Δ	L	T
(6)	1200'	38° 43' 44"	811.14'	421.75'

CAUTION
FOUR CONCRETE PIPE LINES, 16" OIL LINE, CONTACT F.C.P.L. AS PER PROP TO WORKING NEAR THEIR FACILITY (TEL 213-638-0301)

CONNECTOR ROAD PROFILE
STATION 44+00
SCALE: HORIZ. 1" = 40' VERT. 1" = 4'

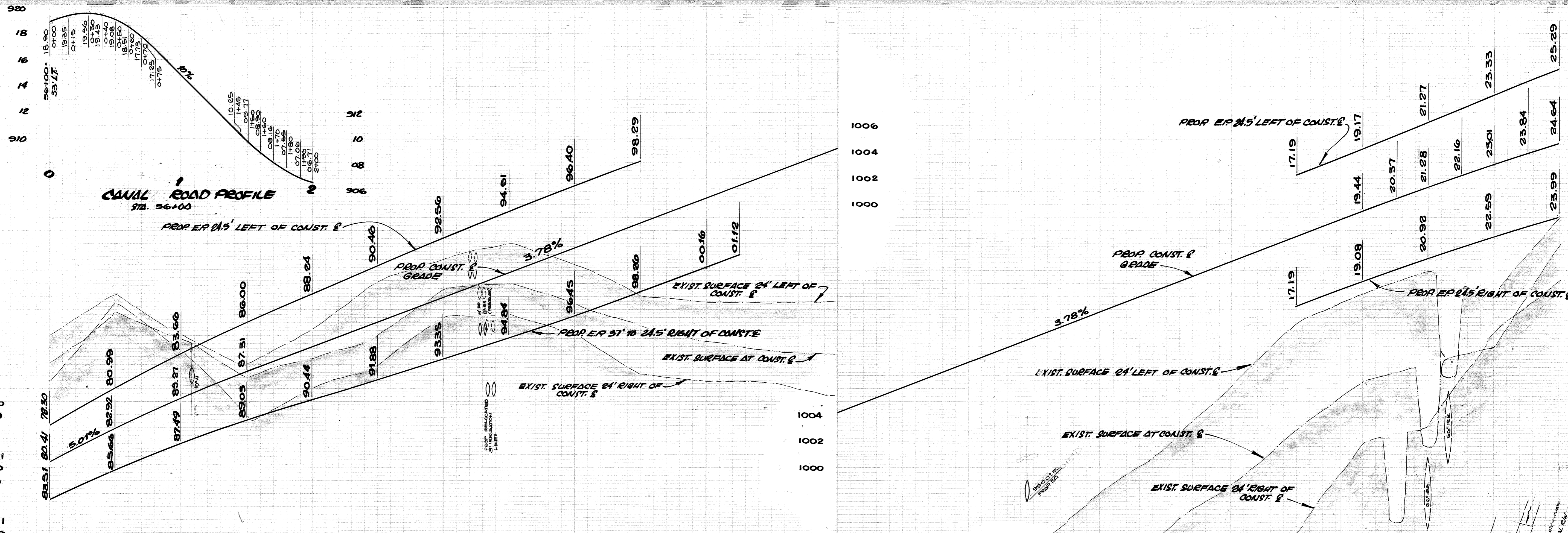
CITY OF RIVERSIDE, CALIFORNIA
DEPARTMENT OF PUBLIC WORKS

AS BUILT 6-2-74 *AM*

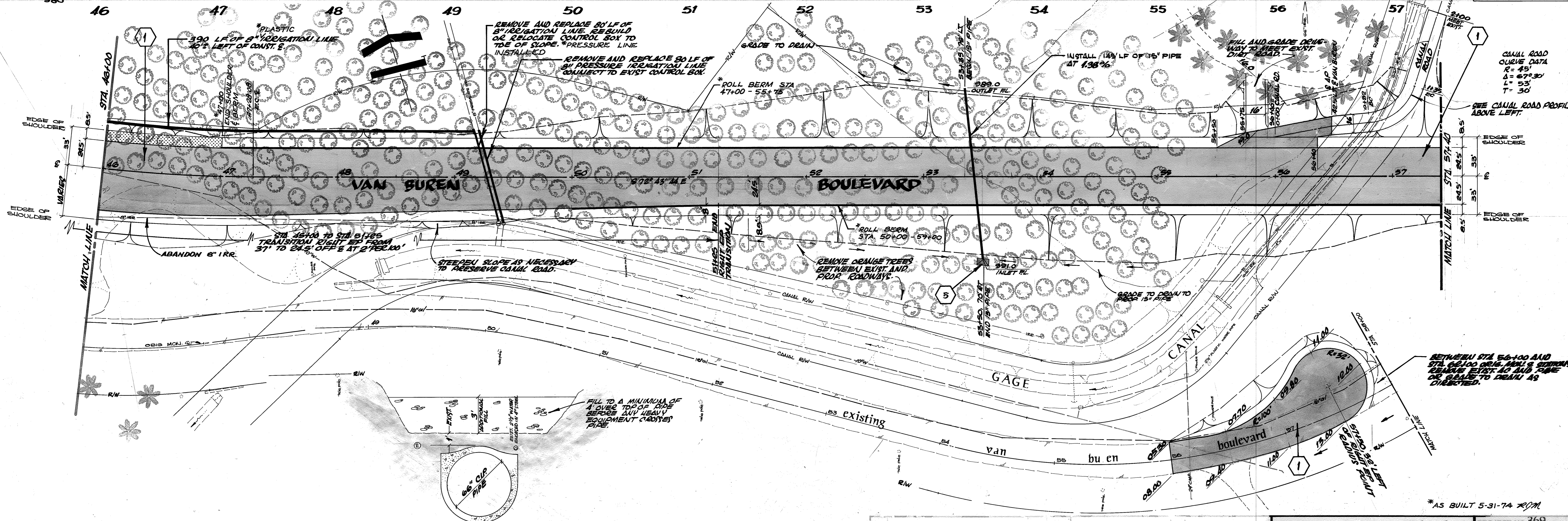
Van Buren Blvd. Widening
Victoria to South City Limits

PROJECT NO. 369
R-1372
SHEET **6** OF **10**

APPROVED BY: _____ DATE: _____
 CHECKED BY: _____ DATE: _____
 DESIGNED BY: _____ DATE: _____
 DRAWN BY: _____ DATE: _____



1026
1025
1024
1026
1025
1024
1026
1025
1024



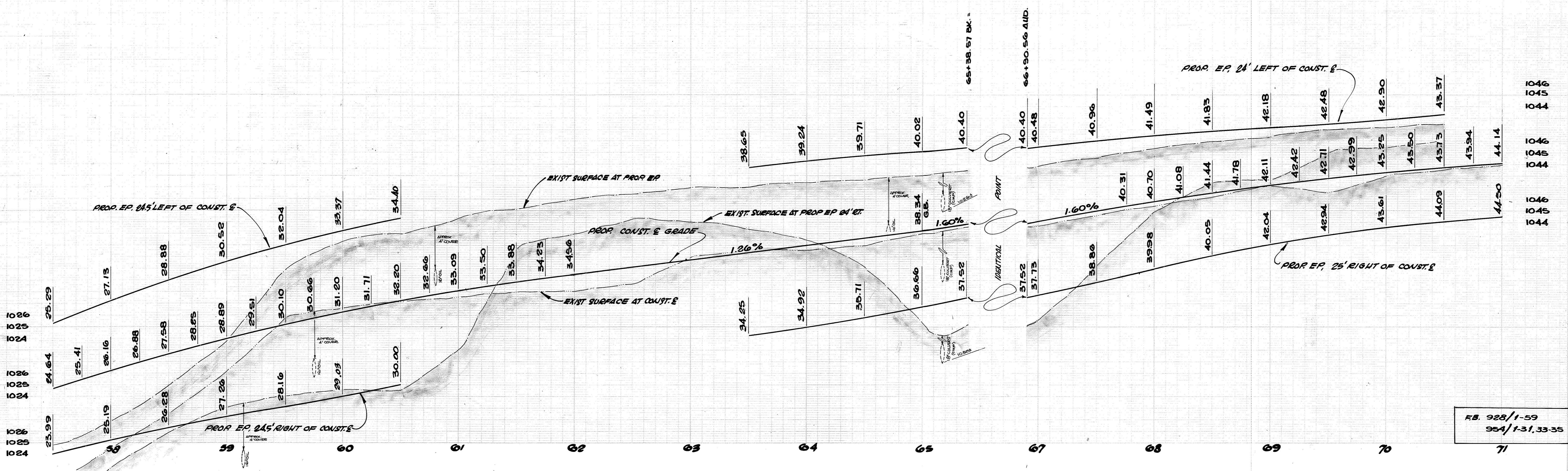
HB. 982/1-59
954/1-31, 33-35

CANAL ROAD CURVE DATA
R = 45'
L = 67.30'
T = 53'
SEE CANAL ROAD PROFILE ABOVE LEFT.

BETWEEN STA. 56+00 AND STA. 60+00 OR. MAN. STATIONS. REMOVE EXIST. 40\"/>

TYPICAL CANAL REPLACEMENT SECTION
SCALE 1"=4'

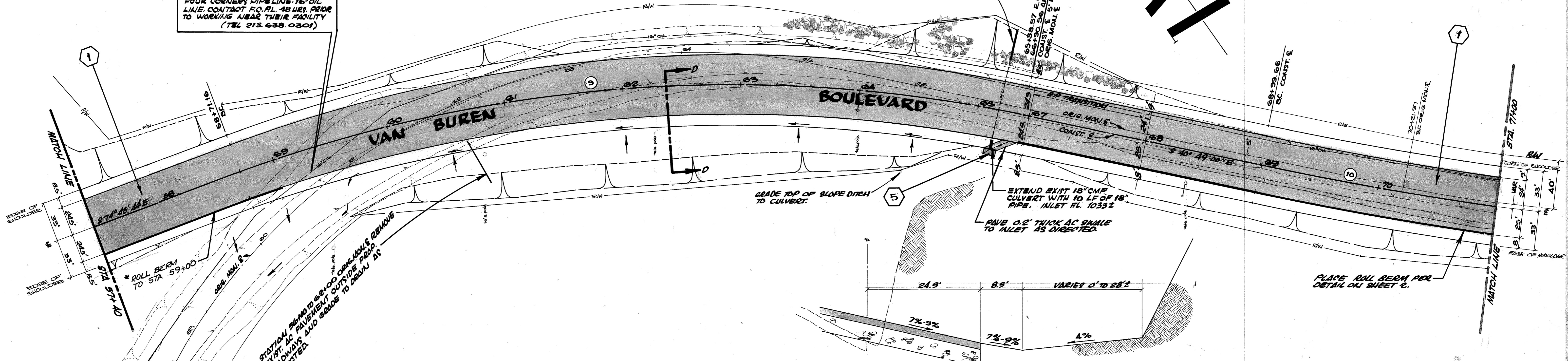
CITY OF RIVERSIDE, CALIFORNIA DEPARTMENT OF PUBLIC WORKS		Van Buren Blvd. Widening Victoria to South City Limits		PROJECT NO. 369 R-1372 SHEET 7 OF 10
DESIGNED BY DRAWN BY CHECKED BY	REVISIONS DATE	APPROVED BY DATE	APPROVED BY DATE	HORIZ. SCALE: 1" = 40' VERT. SCALE: 1" = 4' FILE NO.



RB 928/1-59
954/1-31,33-35

CAUTION
FOUR COILERS PIPE LINE 16" OIL
LINE CONTACT F.O. RL 48.115. PRIOR
TO WORKING AHEAD THEIR FACILITY
(TEL 213.638.0301)

EXTEND EXIST. 18" CULVERT
WITH 20 LF OF 18" PIPE TO
MEET PROP. TOE OF SLOPE.

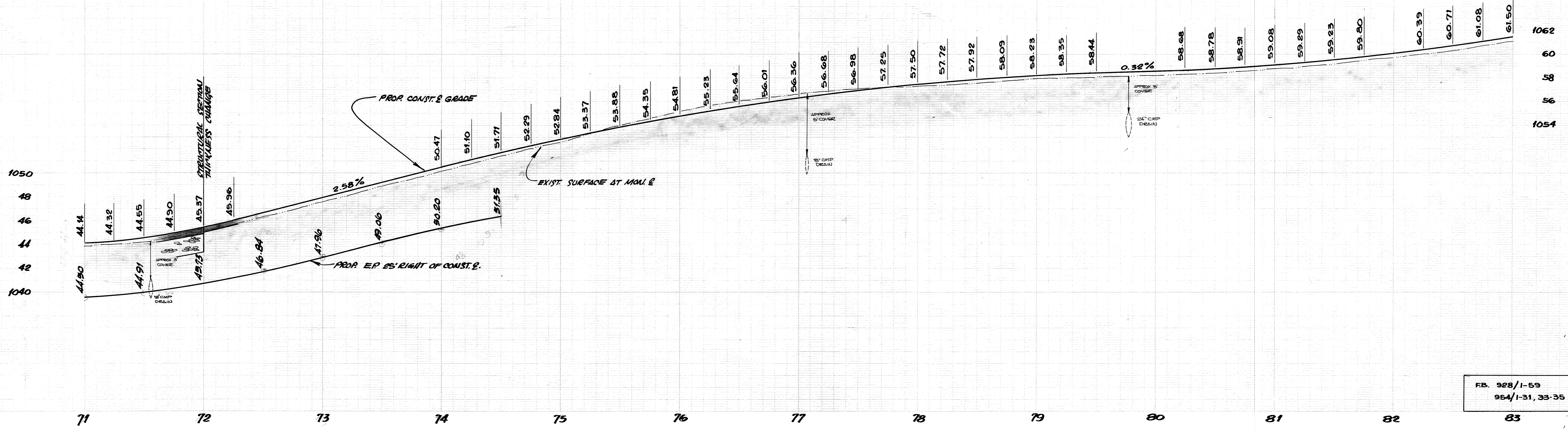


	R	Δ	L	T
(9)	1200'	31° 51' 59"	667.41'	342.6'
(10)	3000'	7° 00' 00"	276.52'	183.4'

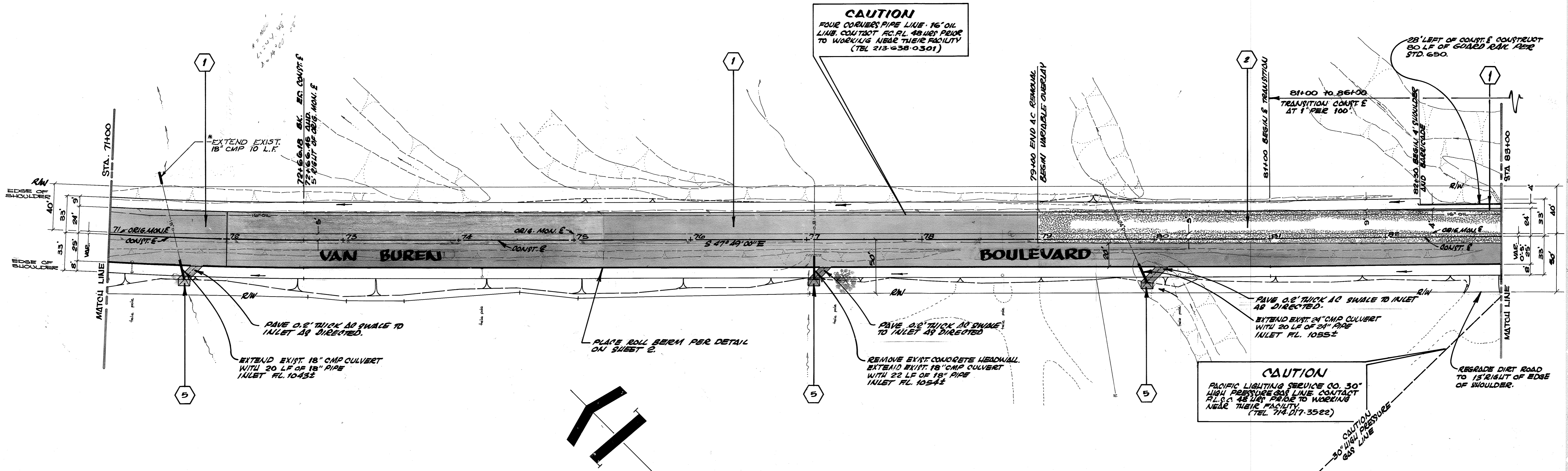
SECTION D-D
± STA 59+50 TO STA 65+00
1/8" SCALE

*AS BUILT 5-31-74 R/W

CITY OF RIVERSIDE, CALIFORNIA DEPARTMENT OF PUBLIC WORKS		Van Buren Blvd. Widening Victoria to South City Limits		PROJECT NO. 369 R-1372 SHEET 8 OF 10
APPROVED BY PRINCIPAL ENGINEER PARK DEPARTMENT TRAFFIC DIVISION C.W. WENZ	APPROVED BY DIRECTOR OF PUBLIC WORKS DATE	REVISIONS DRAWN BY CHECKED BY	DATE	HORIZ. SCALE 1" = 40' VERT. SCALE 1" = 4' FILE NO.



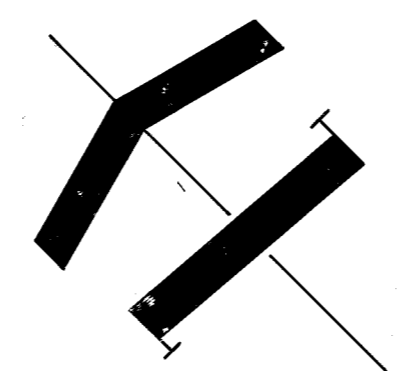
FB. 928/1-59
954/1-31, 33-35



CAUTION
FOUR CORNERS PIPE LINE - 16\"/>

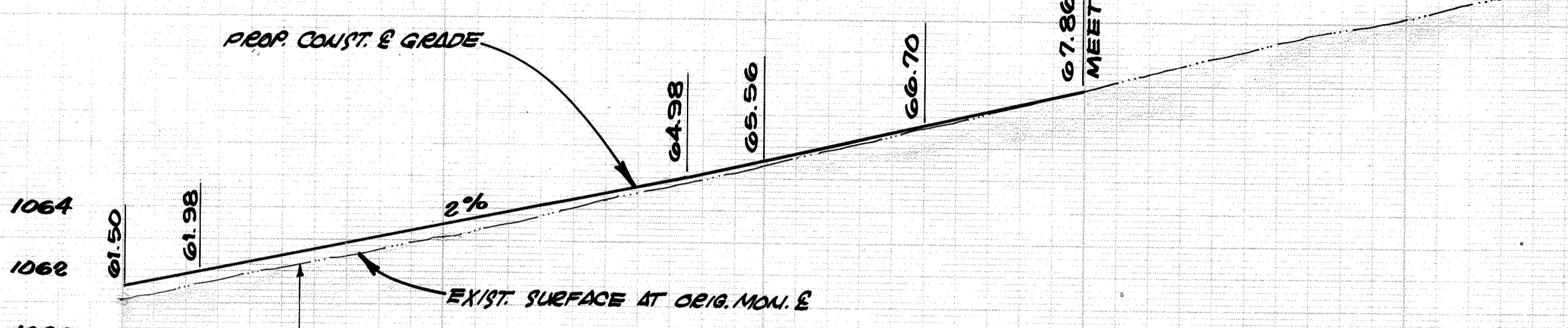
CAUTION
PACIFIC LIGHTING SERVICES CO. 30\"/>

CAUTION
30\"/>

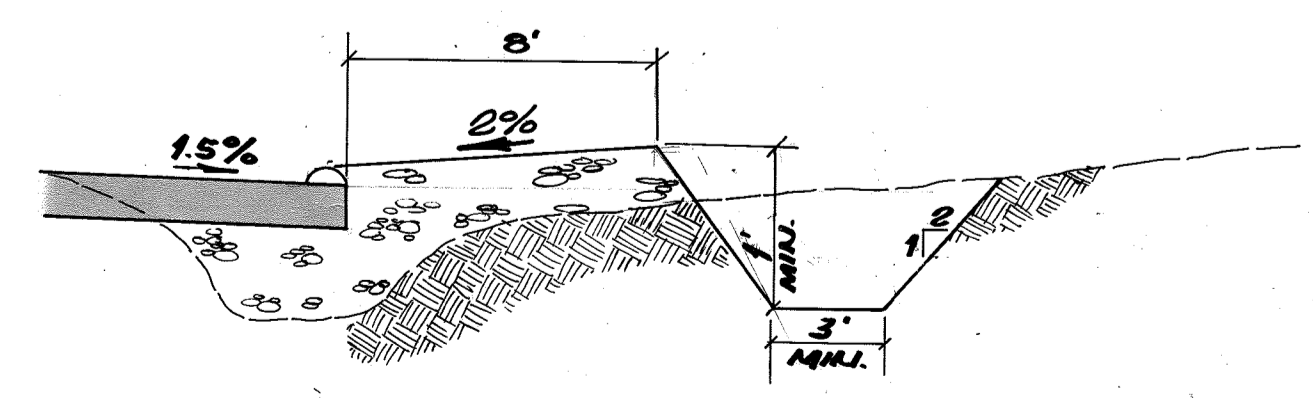
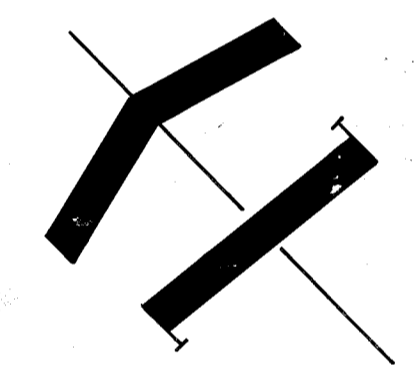
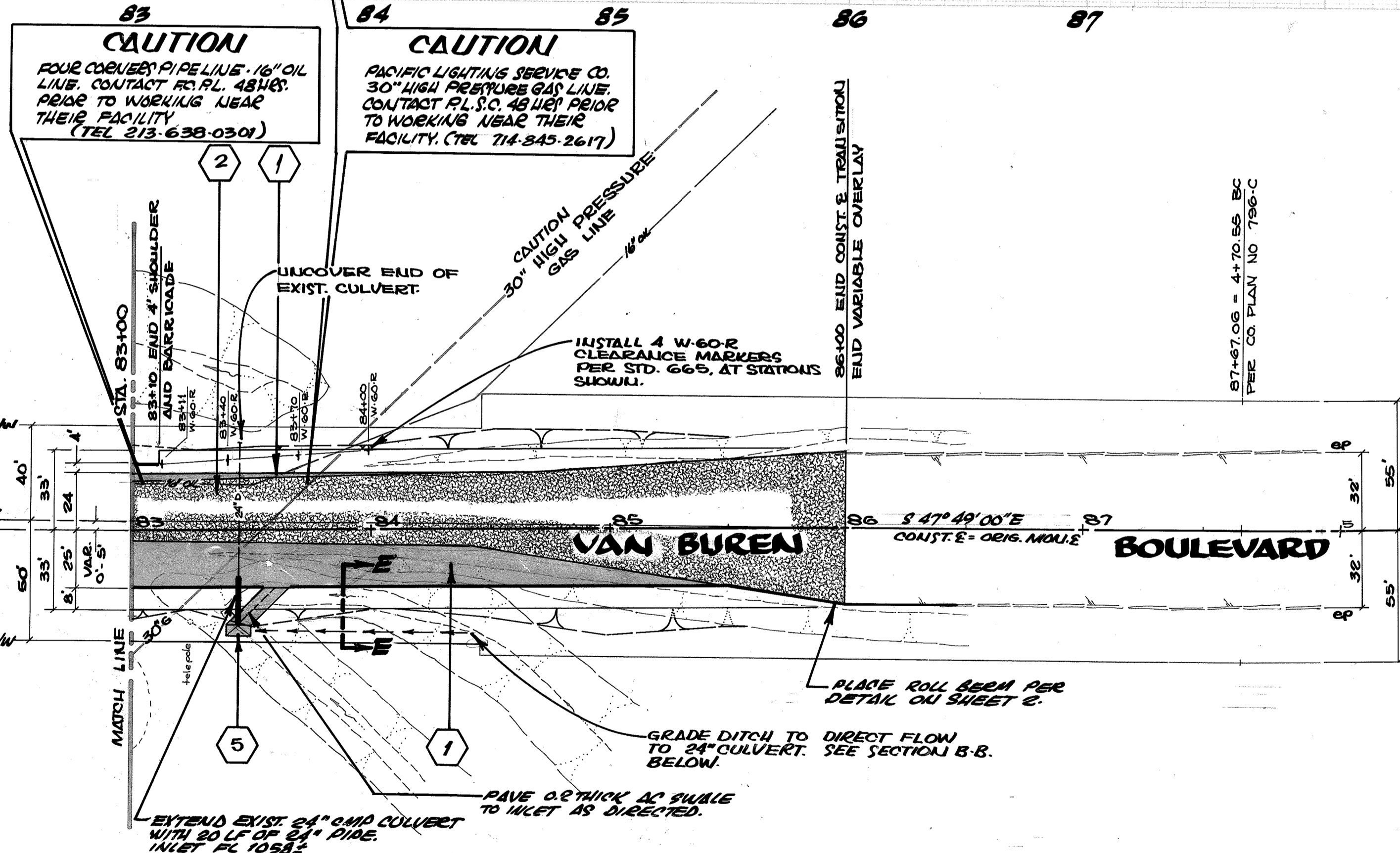


CITY OF RIVERSIDE, CALIFORNIA DEPARTMENT OF PUBLIC WORKS		Van Buren Blvd. Widening Victoria to South City Limits	PROJECT NO. 369
APPROVED BY: [Signature] DIRECTOR OF PUBLIC WORKS			R-1372
SHEET NO. 9 OF 10		SHEET 9 OF 10	

1074
1072
1070

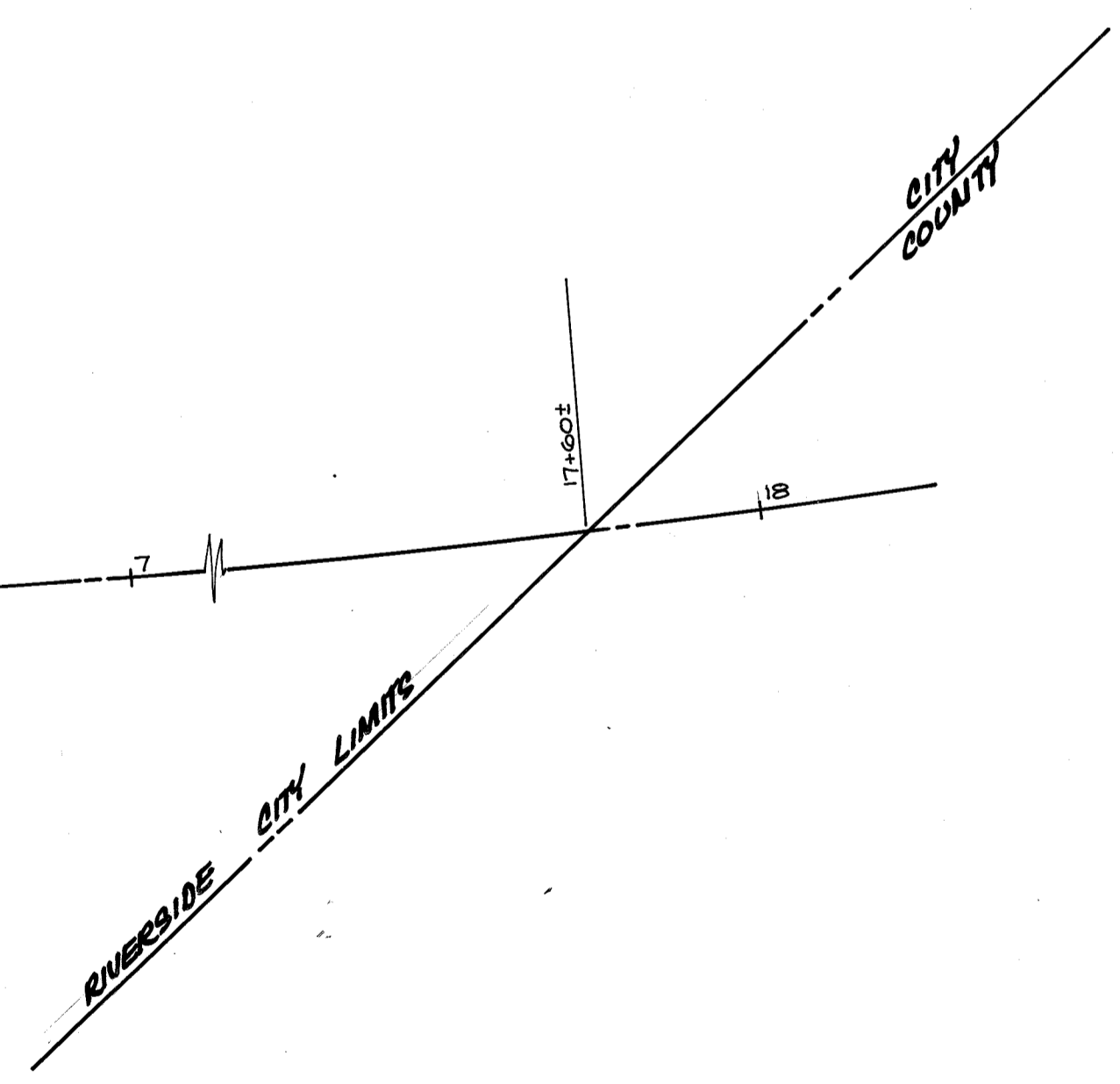


R.S. 928/1-59
924/1-31, 33-35



SECTION E-E
Sta. 83+50 TO Sta. 84+50
SCALE HOR. 1"=5'
VERT. 1"=2'

SEE RIVERSIDE COUNTY PLAN NO. 796-C



*AS BUILT 6-3-74 RDM

Van Buren Blvd.
Widening
Victoria to South City Limits

PROJECT NO. 369
R-1372
SHEET **10** OF 40