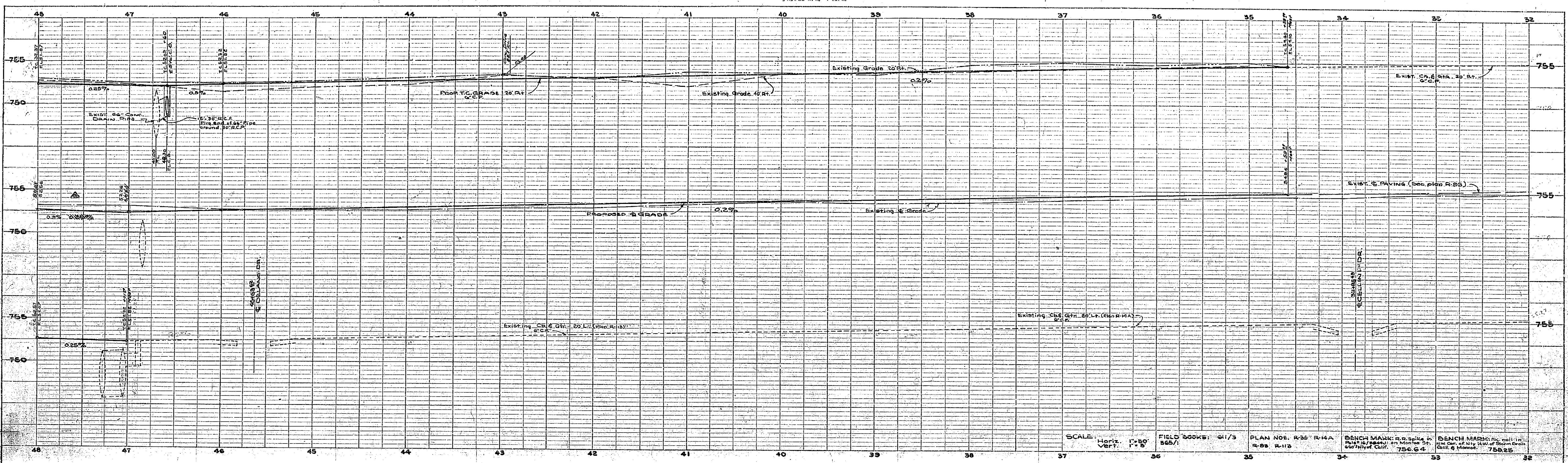
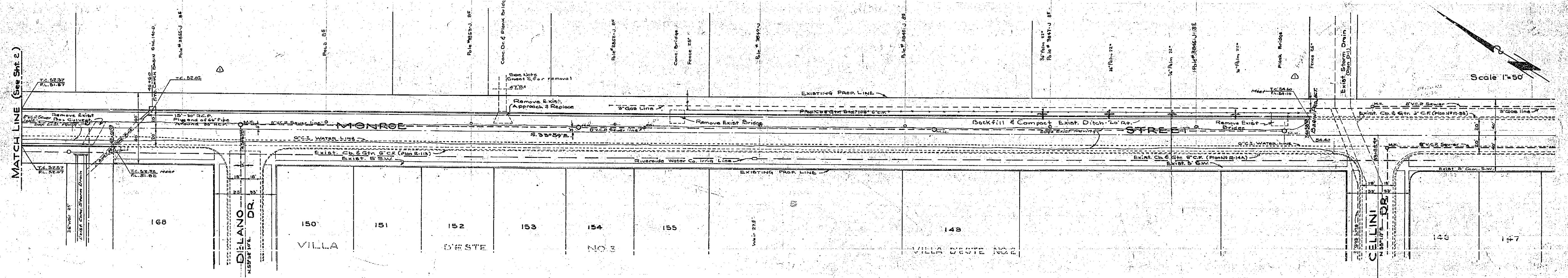


PLATE 1 - PLAN PROFILE
 MONROE ST. & VILLAS DR. & VILLAS DR. & VILLAS DR.
 K & B ENGINEERS
 1000 N. GARDEN ST. RIVERSIDE, CALIF.

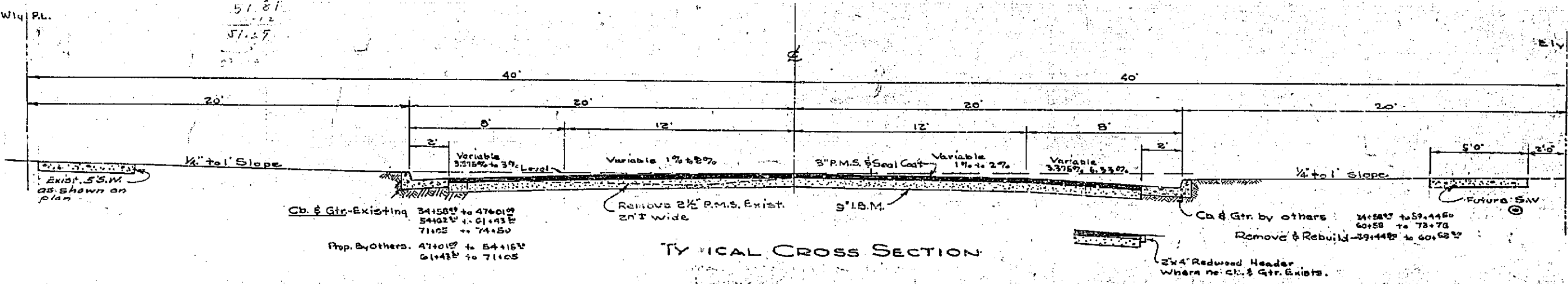


SCALE: Horiz. 1"=50' VERT. 1"=5'
 FIELD BOOKS: 61/3 62/1
 PLAN NOS. R-30 R-14 R-88 R-119
 BENCH MARK: R.R. 5614.00 at 756.64
 BENCH MARK: 756.25

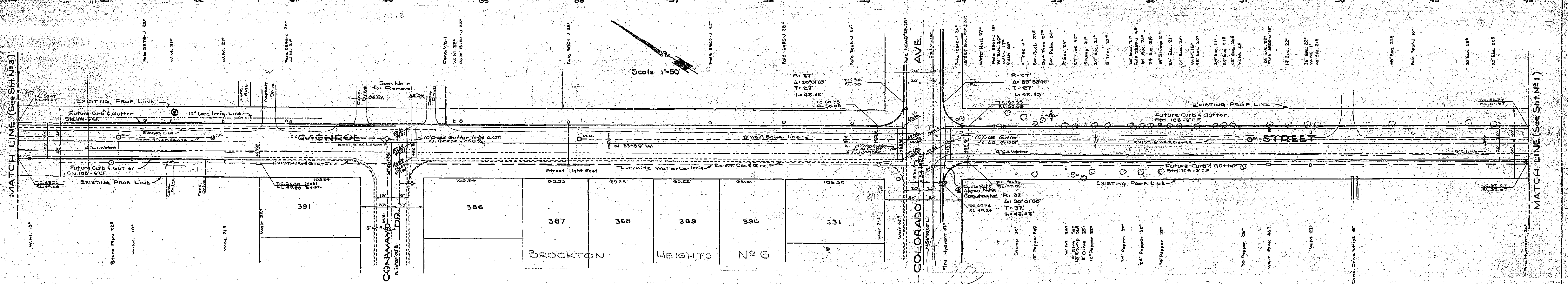
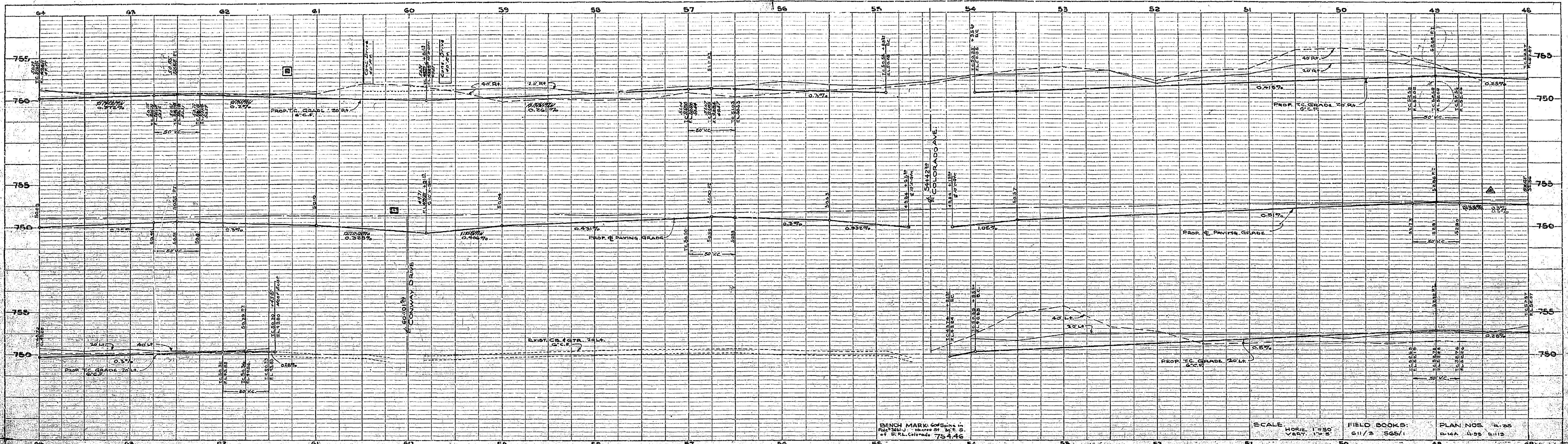
PROFILE	REVISED
NOTE BOOK	PLATTS
FIELD BOOKS	REVISED
PLAN NOS.	REVISED



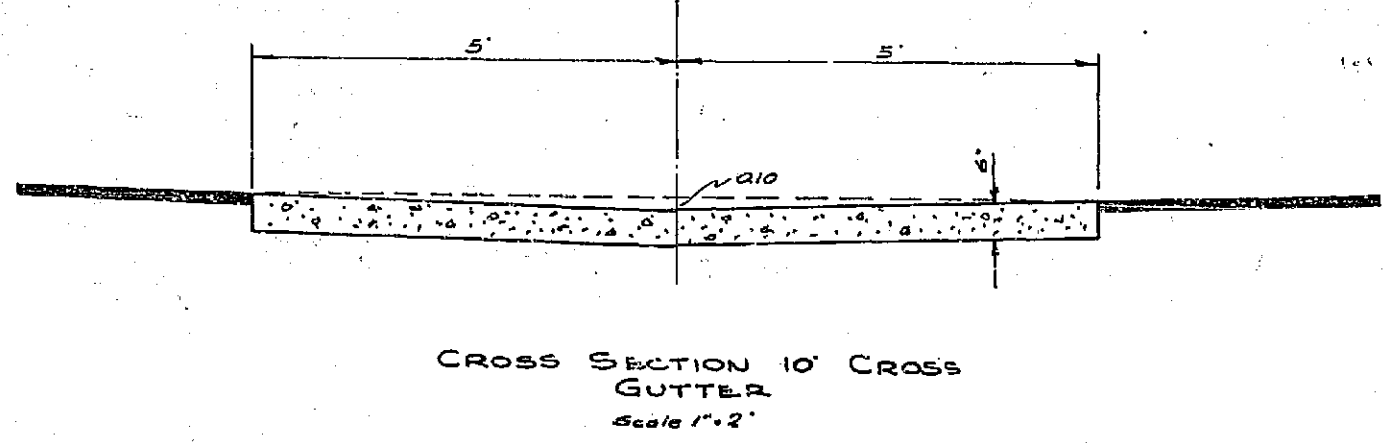
PLAN	REVISED
NOTE BOOK	PLATTS
FIELD BOOKS	REVISED
PLAN NOS.	REVISED



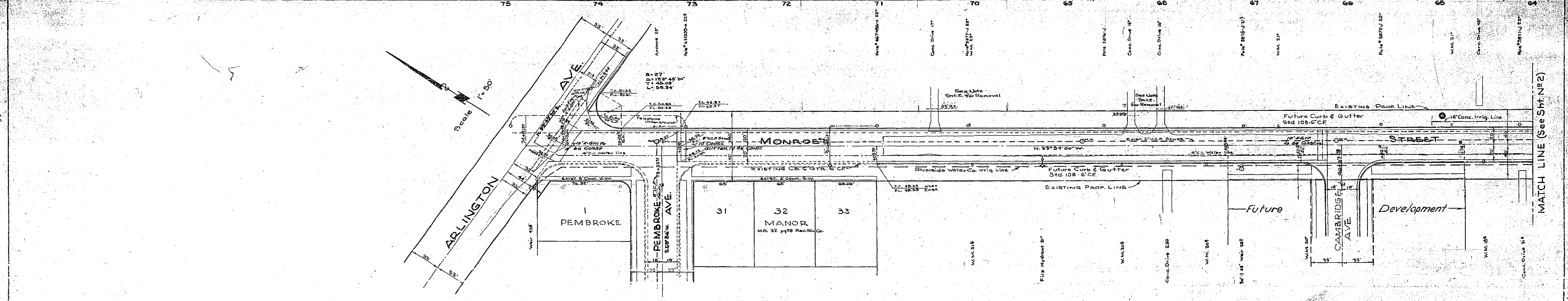
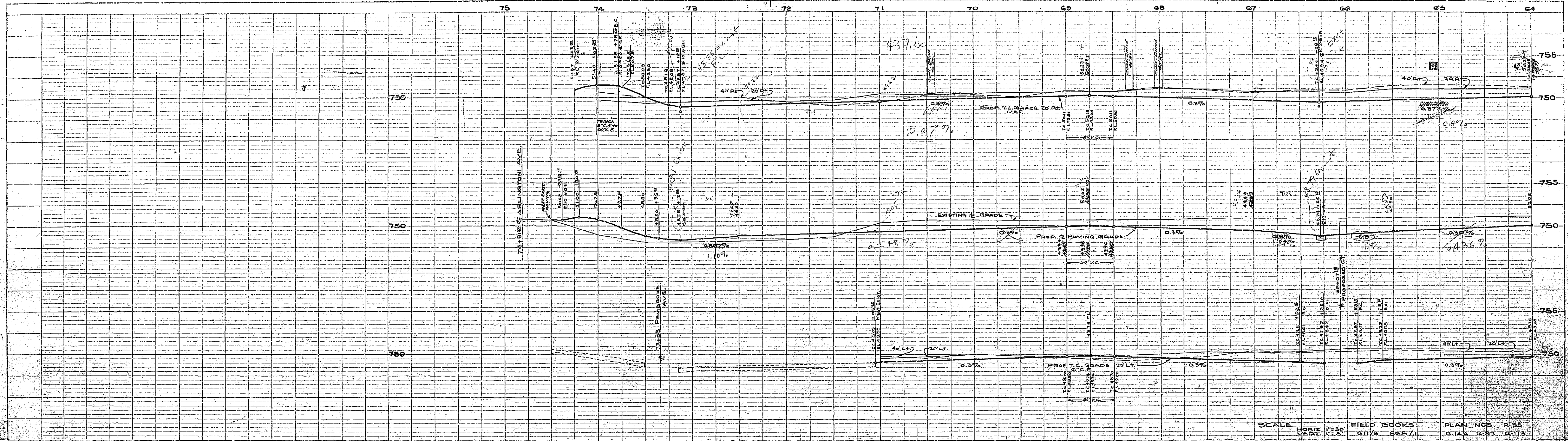
REVISIONS		CITY OF RIVERSIDE CALIFORNIA DEPARTMENT OF PUBLIC WORKS	
MARK	DATE	DESCRIPTION	
Δ	1-16-57	Added Top on Nly side of Monroe between Sta 34+57 & 40+10. (d.r.b.)	MONROE ST. LOWERING & PAVING. 700 Northernly of California Ave. to Arlington Ave. STATE AID PROJ. No. 93
Δ	8-8-58	Changed Grades & Elevations	
Δ	7-18-58	Changed Sidewalk Location from 12' to 15' Prop. Line to 2' to 1' Prop. Line. (d.r.b.)	
DESIGNED BY	CHECKED BY	APPROVED BY	R-138 SHEET 1 OF 3
DRAWN BY d.r.b.	U.L.G.	<i>[Signature]</i>	
RECOMMENDED BY	ASSISTANT CITY ENGINEER	DIRECTOR OF PUBLIC WORKS DATE 12-19-57	



NOTE:
 Existing driveway approaches and concrete driveways to be removed to indicated offset distances. Replace concrete driveway approaches with City of Riverside Std. NB 109-B and Join existing drives to new approach & sidewalk section with maximum 10% slope.



REVISIONS			CITY OF RIVERSIDE CALIFORNIA DEPARTMENT OF PUBLIC WORKS	
MARK	DATE	DESCRIPTION	MONROE ST. LOWERING & PAVING 700 Northerly of California Ave. to Arlington Ave. STATE AID PROJ. NO. 93	
⊙	4-30-58	Added 14" Conc. Irrig. Line		
⊠	5-2-58	Changed Curb Grades & Elevations.		
⊡	5-8-58	Changed Grades & Elev. det.		
⊛	5-15-58	Added Note on Ret. #Aprova		
DESIGNED BY	CHECKED BY	APPROVED BY	R-138 SHEET 3 of 3	
DRAWN BY	RECOMMENDED BY	DIRECTOR OF PUBLIC WORKS		
		DATE		



PROFILE

PROJECT	
DATE	
SCALE	
FIELD BOOKS	
PLAN NOS	

PLAN

PROJECT	
DATE	
SCALE	
FIELD BOOKS	
PLAN NOS	

REVISIONS DATE DESCRIPTION 1-30-67 Added 14" Conc. Irrig. Line & Adjusted Curb Grades & Elevations, etc.		CITY OF RIVERSIDE, CALIFORNIA DEPARTMENT OF PUBLIC WORKS <h3>MONROE ST.</h3> LOWERING & PAVING 100 Northernly of California Ave. to Arlington Ave STATE AID PROJ. No. 53
DESIGNED BY DRAWN BY <i>d.r.b.</i>	CHECKED BY <i>J.L.G.</i> APPROVED BY <i>[Signature]</i> DIRECTOR OF PUBLIC WORKS R.E. 8/34	
RECOMMENDED BY <i>[Signature]</i> ASSISTANT CITY ENGINEER	DATE 12-19-67	R-138 SHEET 3 OF 3