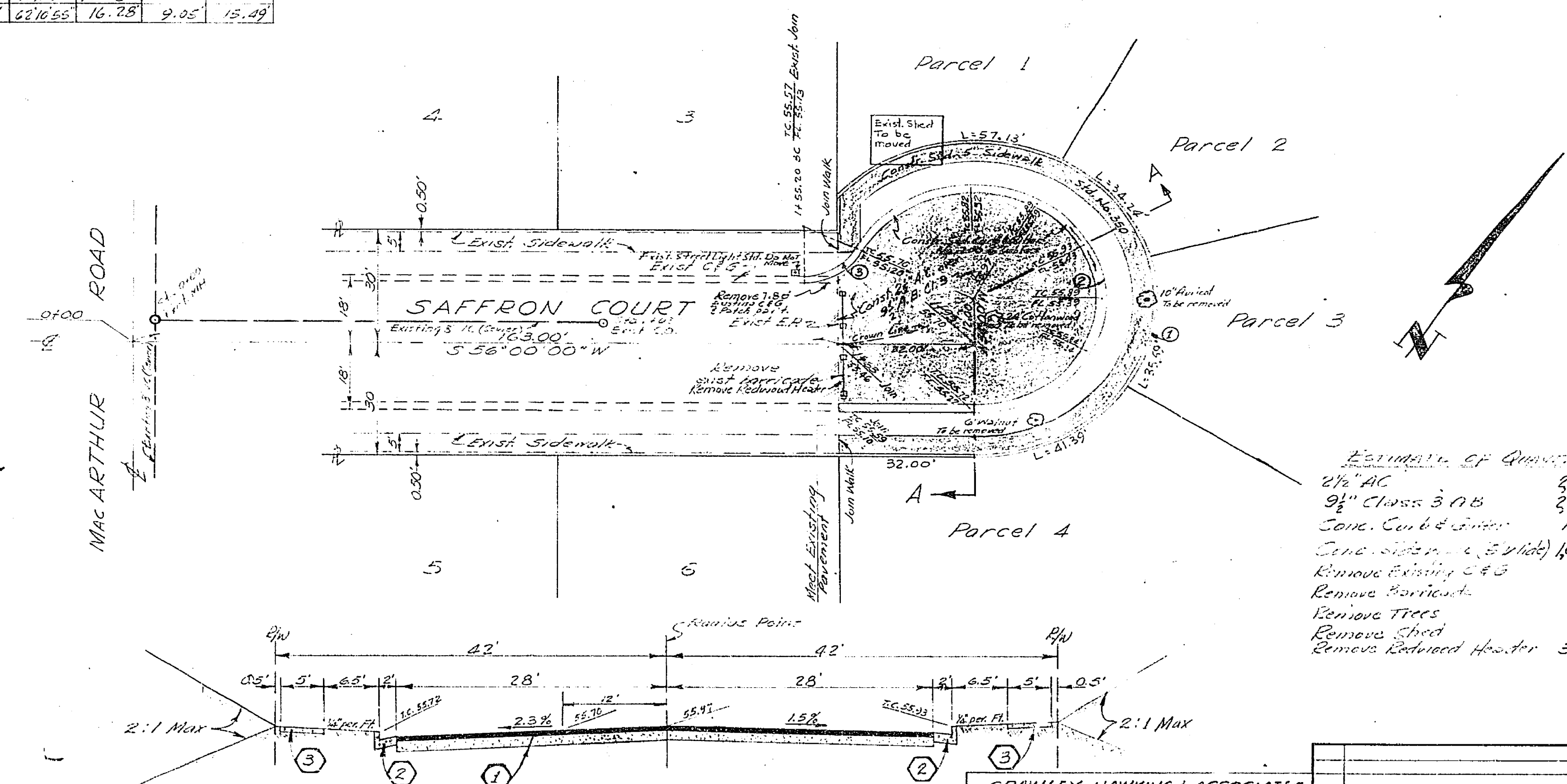
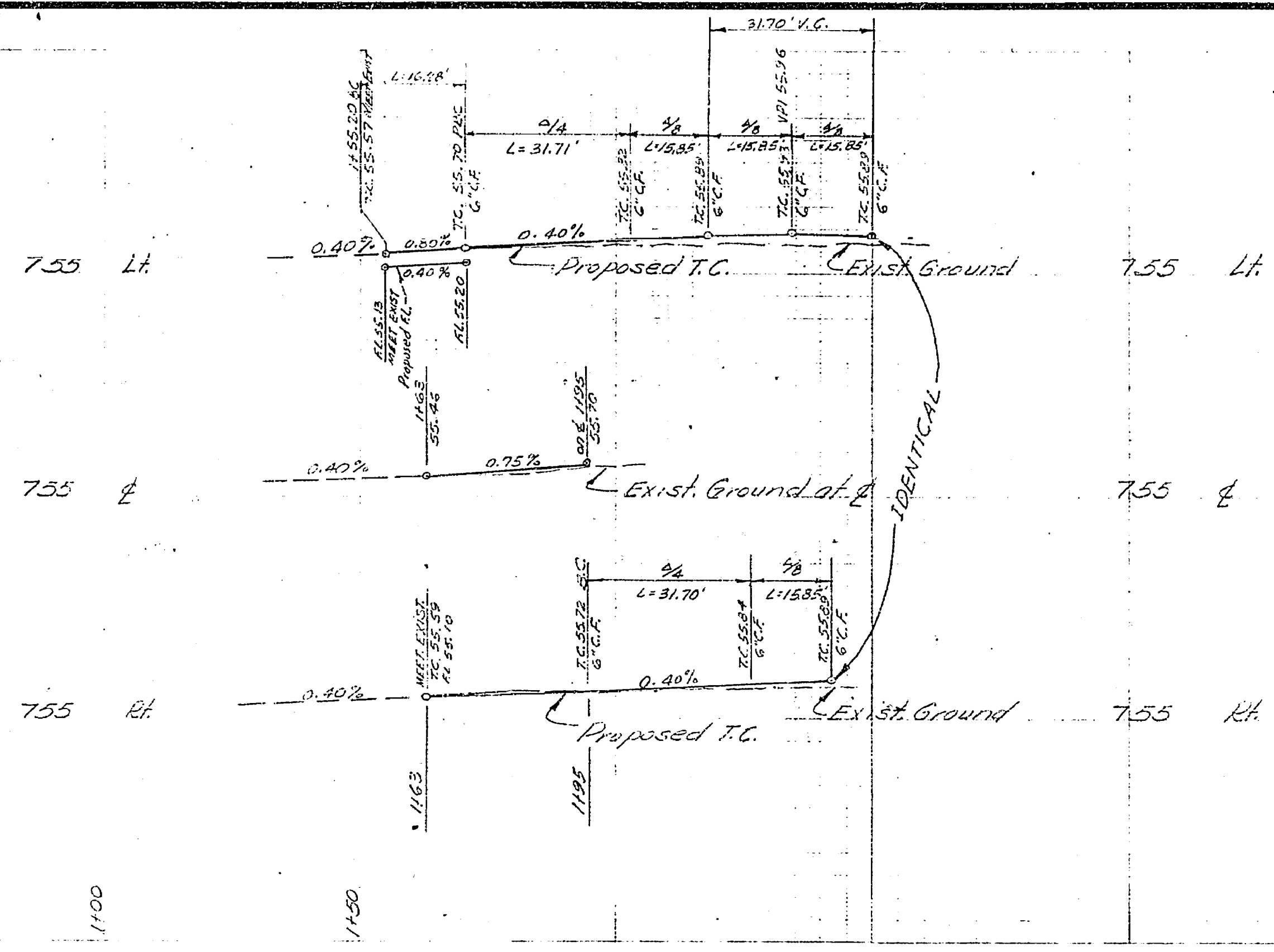


No.	R	Δ	L	T	Ch.
1	42'	22°39'50"	168.35'		
2	30'	242°16'30"	126.81'		
3	15'	62°16'55"	16.28'	9.05'	15.49'

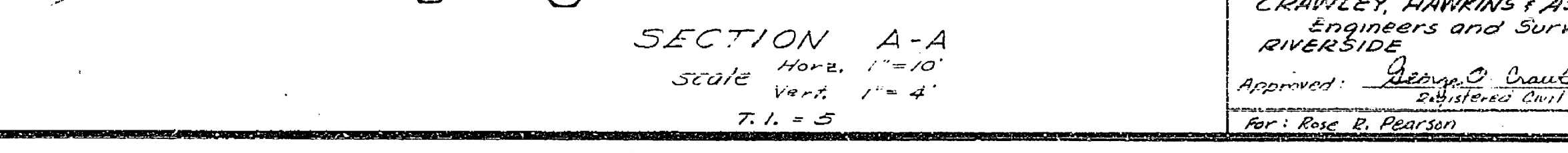


**ESTIMATE OF QUANTITIES**

2 1/2" A.C.	2760 SF
9 1/2" Class 3 A.B.	2760 SF
Some. Curb & Gutter	175 LF
Gene. Sidewalk (Excl'd)	1050 SF
Remove Existing C&G	6 L.F.
Remove Barricade	1 Ea.
Remove Trees	3 Ea.
Remove Shed	1 Ea.
Remove Retained Hoop	32 L.F.

- GENERAL NOTES**
- (1) It shall be the responsibility of the contractor to clear the right of way in accordance with the provisions of law as it affects each utility, including irrigation lines and riparianness, and if no cost to the city.
  - (2) Construction shall be in accordance with the City of Riverside, Department of Public Works, Specifications No. 461 and Standard Drawings.
  - (3) Prime coat, seal coat, and paint binder, are required.
  - (4) Grading will require a permit under Ordinance 3093 for a cut or fill exceeding 100 cubic yards, or a fill over one foot in depth.
  - (5) Trim edge of existing pavement, where new paving joins existing pavement, to a clean, straight line. Construct match-up paving as shown.
  - (6) Driveways to be constructed per city Ord. No. 302 and shall be located in the field.

- CONSTRUCTION NOTES**
- (1) Construct 2 1/2" A.C. over 9 1/2" Class 3 A.B.
  - (2) Construct Curb & Gutter per Std. Dwg. No. 200 G" Curb Face
  - (3) Construct Sidewalk per Std. Dwg. No. 350



**SECTION A-A**  
 Scale: Horiz. 1" = 10'  
 Vert. 1" = 4'  
 T.I. = 5

**CRAWLEY HAWKINS & ASSOCIATES**  
 Engineers and Surveyors  
 RIVERSIDE  
 684-9522  
 Approved: *George J. Crawley* 9-16-69  
 District Civil Engineer "B&S"  
 For: Rose E. Pearson

MARK	REVISIONS	APPR.	DATE

**CITY OF RIVERSIDE, CALIFORNIA**  
 DEPARTMENT OF PUBLIC WORKS

APPROVED BY	BY	DATE

**STREET PLAN AND PROFILE**  
**SAFFRON COURT**  
 193' NELY OF MACARTHUR ROAD  
 R.S. 106.5

PROJECT NO. W.D. # 1748  
**R-1384**  
 SHEET 1 OF 1  
 FILE NO. 4162

Riv. City  
 REVENUE MAPS F.B. 595/61  
 PL. MAP. IN SLY CURB CALIF.  
 24 WEST OF SW CORN. RETURN  
 KINGSBURY'S CALIFORNIA EL. 750.82